

Joint Business Item: 2016-142

City of Lexington 2030 Comprehensive Plan
and Tier II Sewer Plan Update, Review File
No. 20486-1

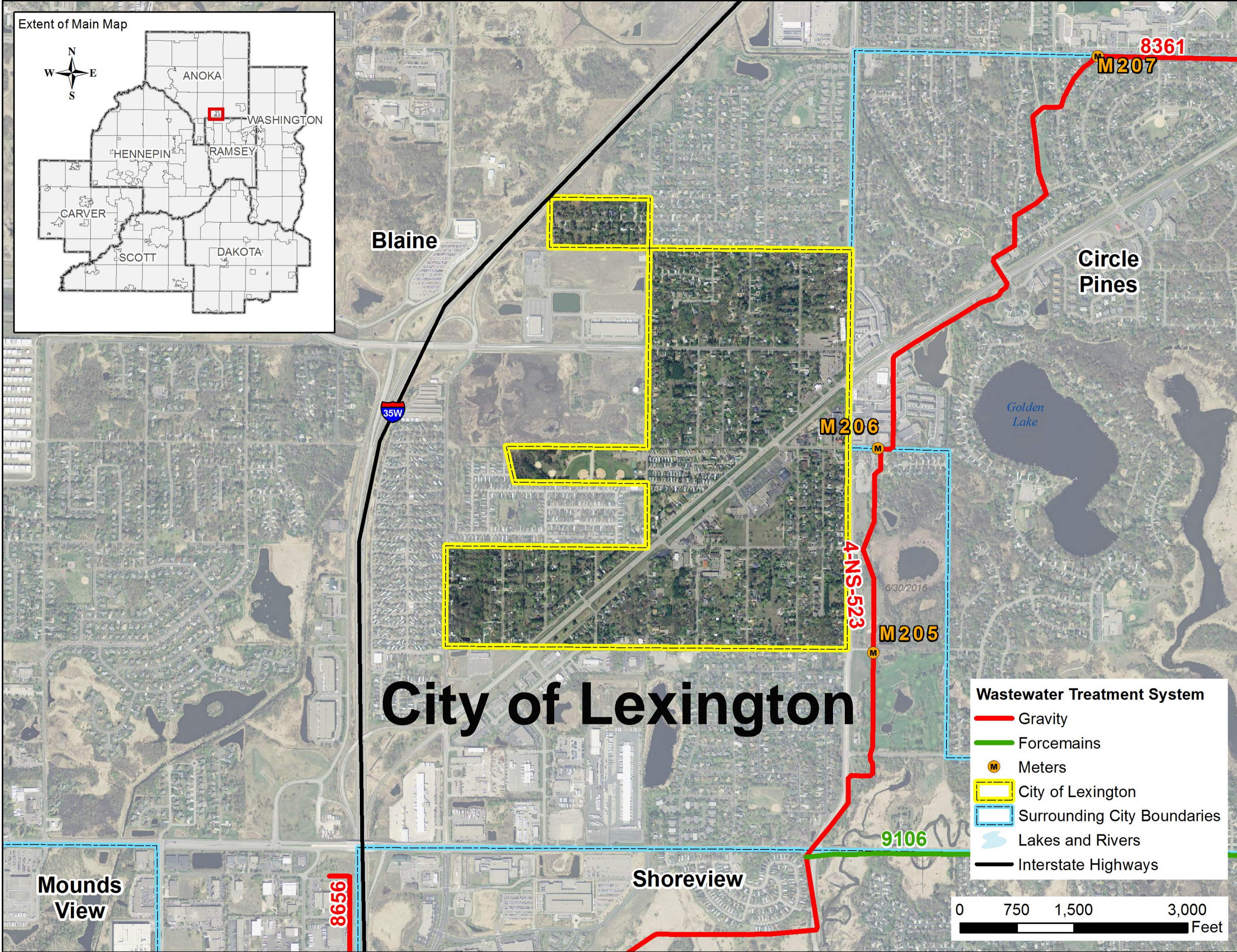
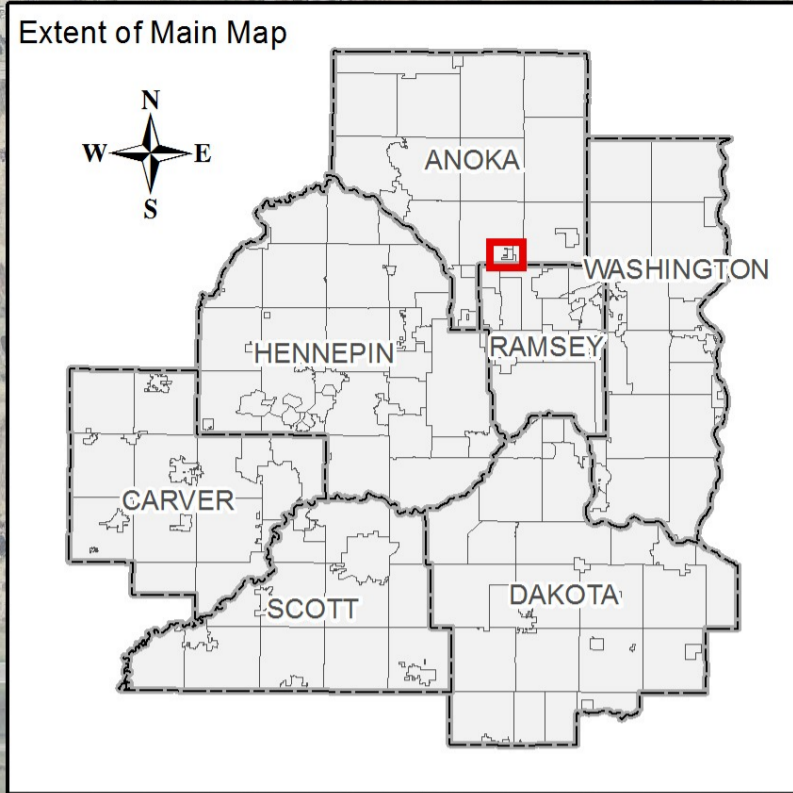
Kyle Colvin, Assistant Manager, Engineering Programs

Environment Committee: July 12, 2016



Background & Overview

- Designated as a “Developed” community in the Council’s Regional Development Framework.
- City’s Update projects little to no growth within the 20-year planning period (2030).
- Update reflects new residential density development to occur at over 5 units per acre.
- City is not a community with an assigned inflow & infiltration (I/I) work plan, however plan includes an I/I investigation and mitigation program.



City of Lexington

Wastewater Treatment System

- Gravity
- Forcemains
- Ⓜ Meters
- City of Lexington
- Surrounding City Boundaries
- ~ Lakes and Rivers
- Interstate Highways



Proposed Findings

- ✓ Conforms to 2030 metropolitan system plans
- ✓ Consistent with the Regional Development Framework and the 2030 Water Resources Management Policy Plan.
- ✓ Compatible with the plans of adjacent local governmental units and affected jurisdictions

Proposed Action

That the Metropolitan Council adopt the advisory comments and review record and approve the City of Lexington's Tier II Comprehensive Sewer Plan.

Questions