

# **Business Item: 2016-53**

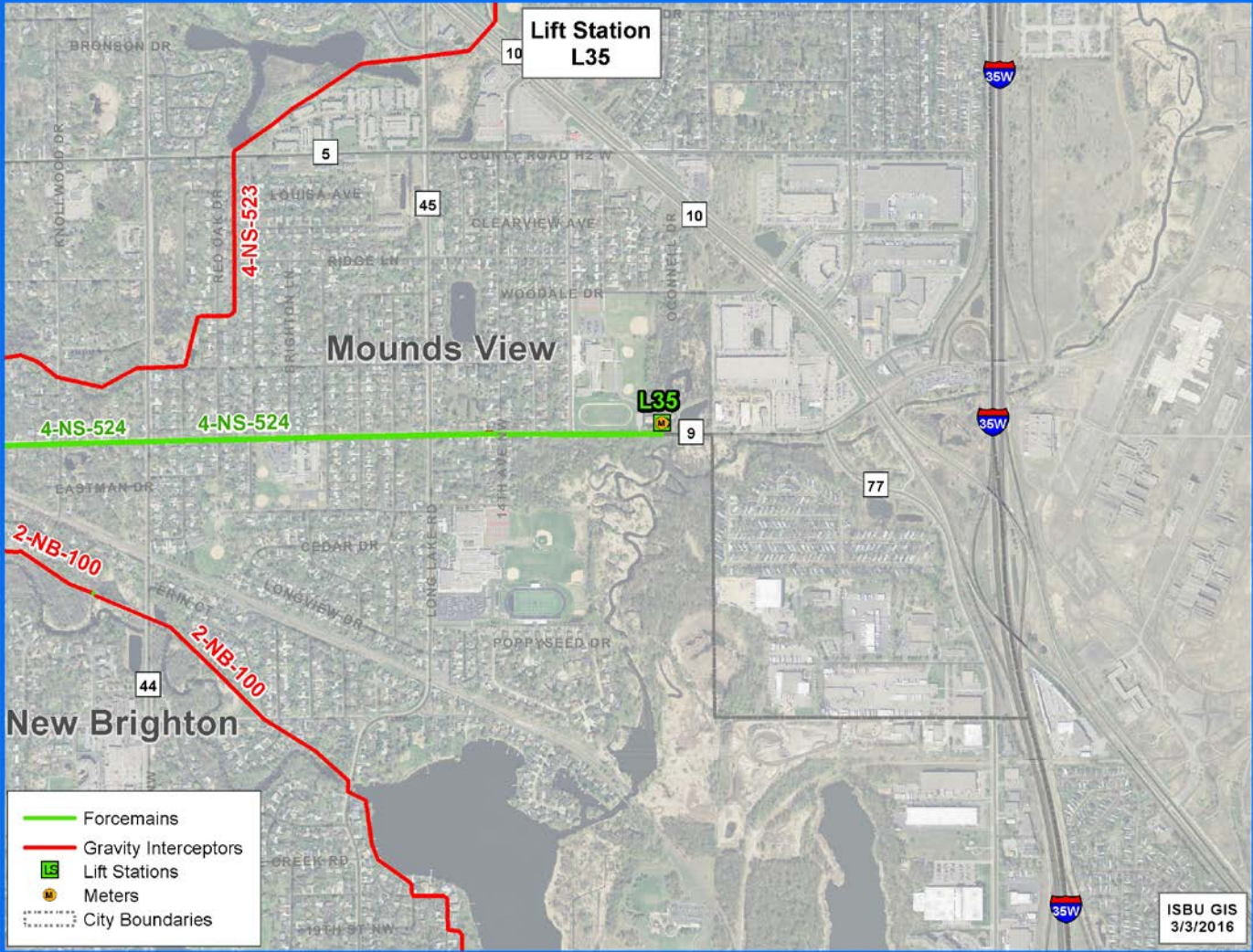
## **Ratification of Emergency Declaration for Pump Flow L-35 Lift Station and Forcemain 4-NS-524**

Mike Mereness, Assistant General manager

Environment Committee: March 8, 2016



# L-35 Emergency Declaration



# L-35 Emergency Declaration



# L-35 Emergency Declaration

Setting up to truck wastewater. Portable pumps used to fill tanker trucks.



Tanker trucks used to carry flow to a gravity sewer

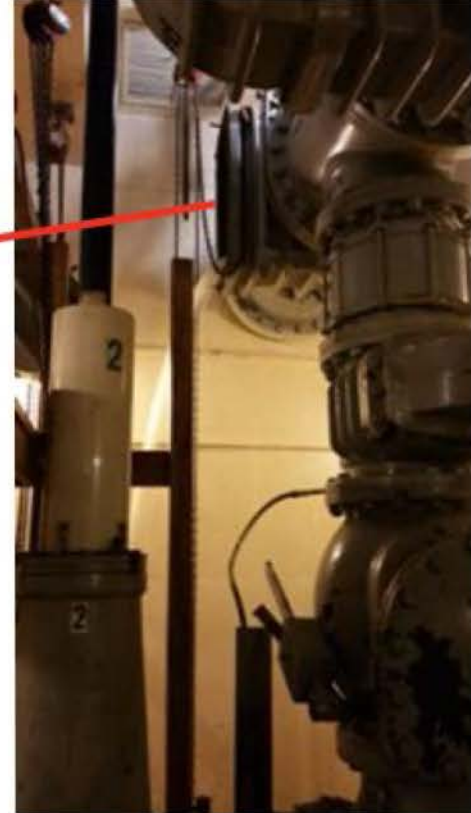


# L-35 Emergency Declaration

Broken Valve



# L-35 Emergency Declaration



# L-35 Emergency Declaration



Area of blockage  
and dig investigation



# Questions