

Business Item: 2016-53

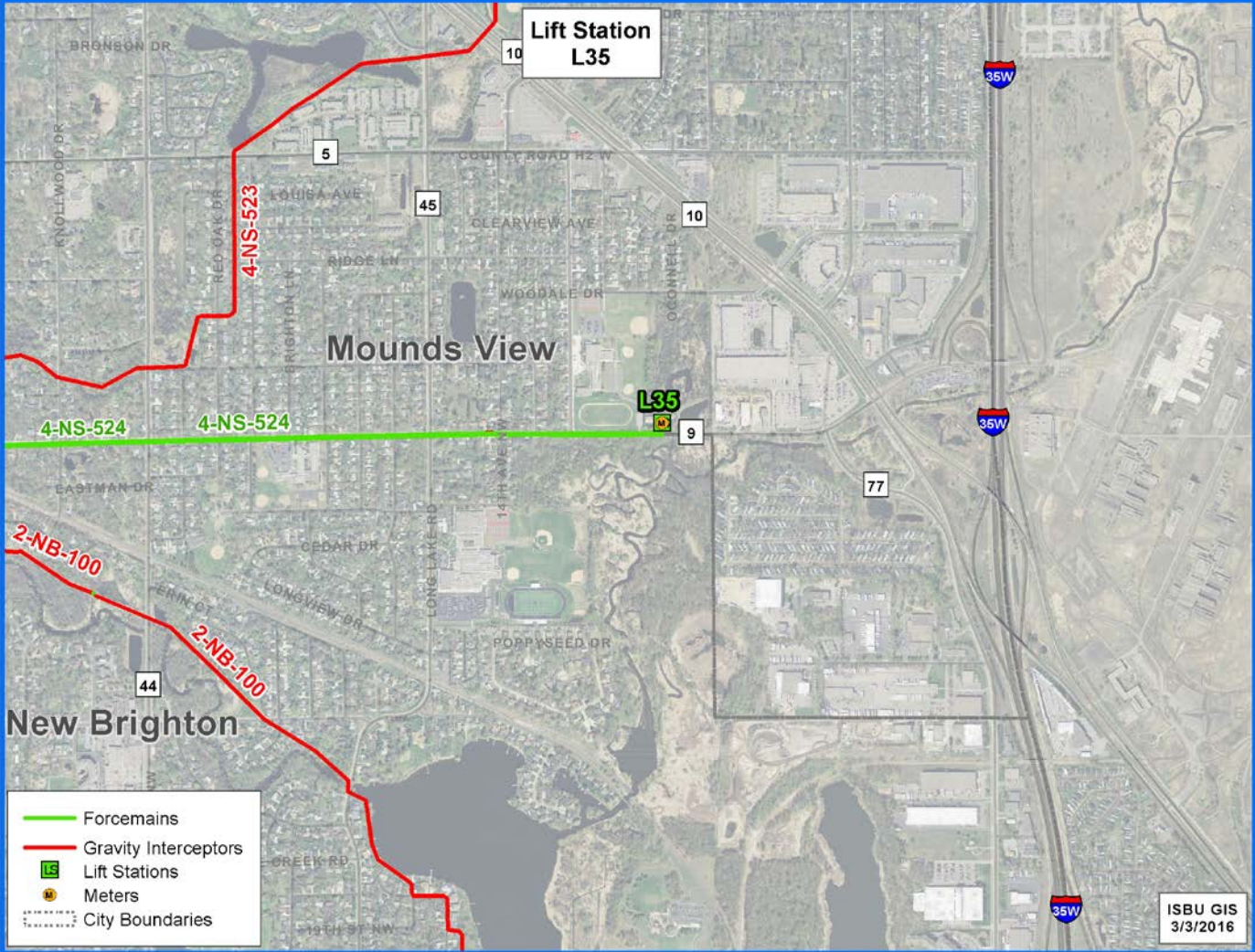
Ratification of Emergency Declaration for Pump Flow L-35 Lift Station and Forcemain 4-NS-524

Tim Keegan, Business Unit Manager

Environment Committee: March 8, 2016



L-35 Emergency Declaration



L-35 Emergency Declaration



L-35 Emergency Declaration

Setting up to truck wastewater. Portable pumps used to fill tanker trucks.



Tanker trucks used to carry flow to a gravity sewer

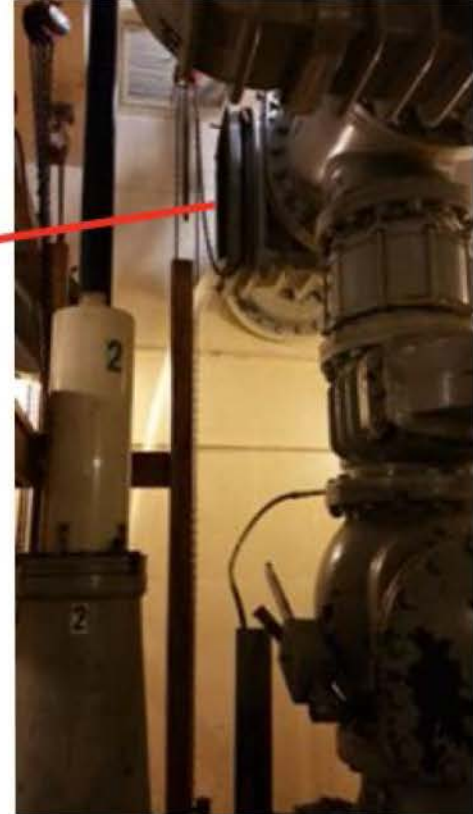


L-35 Emergency Declaration

Broken Valve



L-35 Emergency Declaration



L-35 Emergency Declaration



Area of blockage and dig investigation

Questions