

**Business Item: 2018-215 JT SW**  
**City of Medina 2040 Comprehensive  
Sewer Plan, Review File 21831-1**

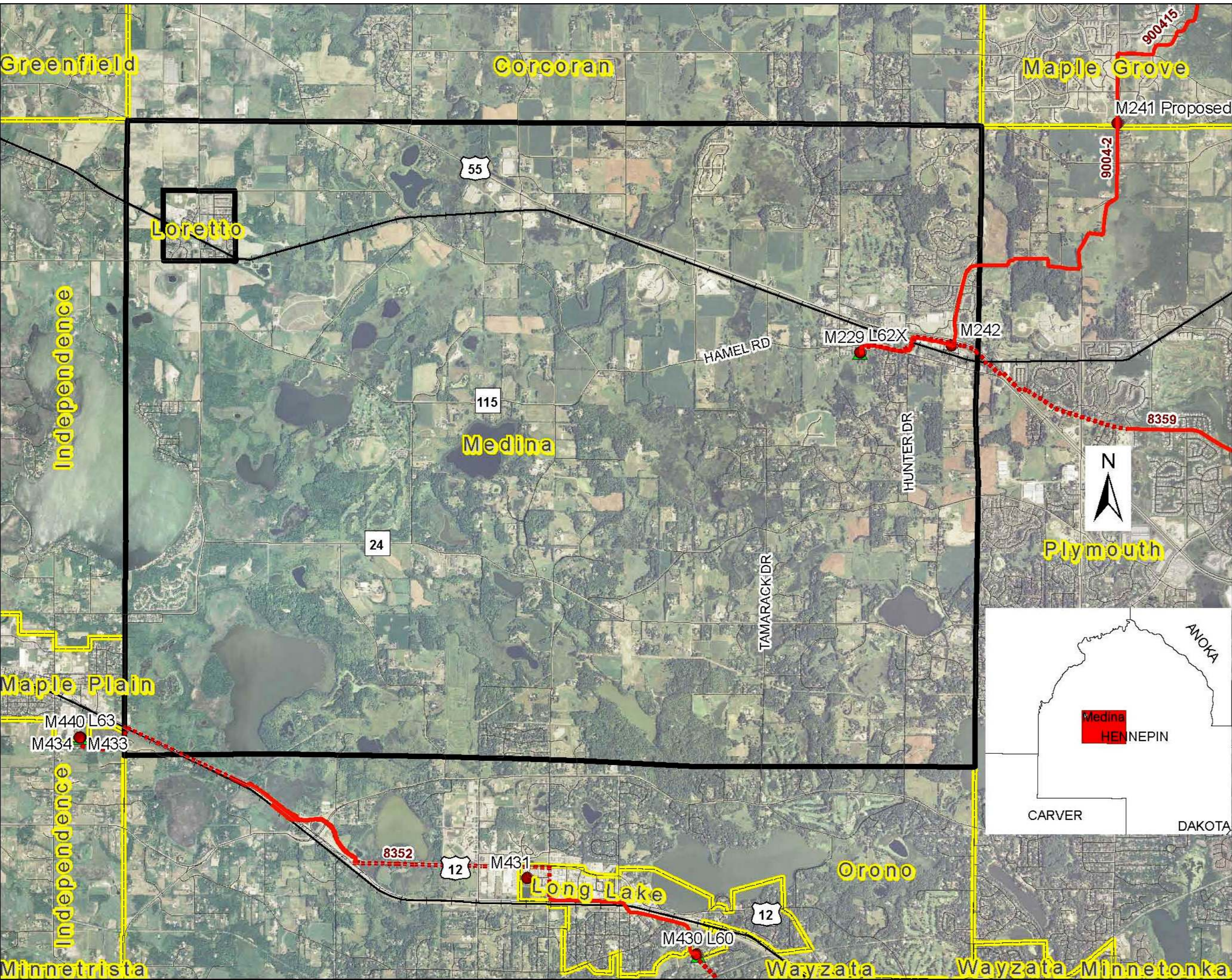
Kyle L. Colvin, Manager, Engineering Programs

Environment Committee: August 14, 2018



# Medina's Comprehensive Plan Update

- August 14, 2018 – Environment Committee (Wastewater Plan)  
Request Council to formally “Approve” of Wastewater Plan
- August 20, 2018 – Community Development Committee (Comprehensive Plan Update)  
Request Council to advise City to Implement 2040 Plan
- August 22, 2018 – Metropolitan Council (Final Actions)  
Formally “Approval” of Wastewater Plan  
Advise City to Implement 2040 Plan



## Location

- Hennepin County
- Metropolitan Council District 1

## Wastewater Service Statistics

Year	Households	Employment
2010	1,032	3,146
2040	<u>2,630</u>	<u>5,300</u>
+/-	+1,598	+2,154

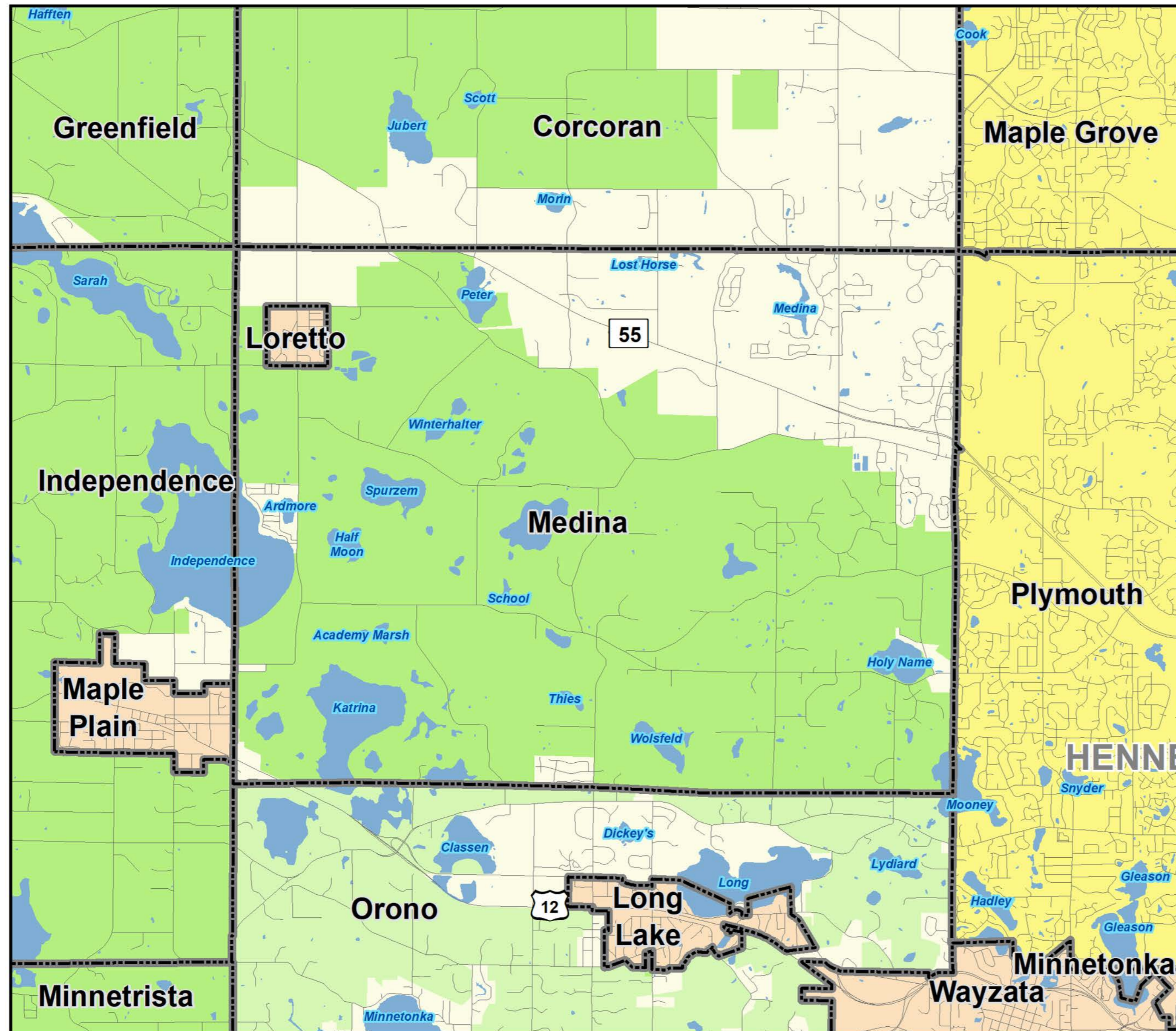
Minimum sewer Residential Density: 3.17 Units per acre

SSTS': 702

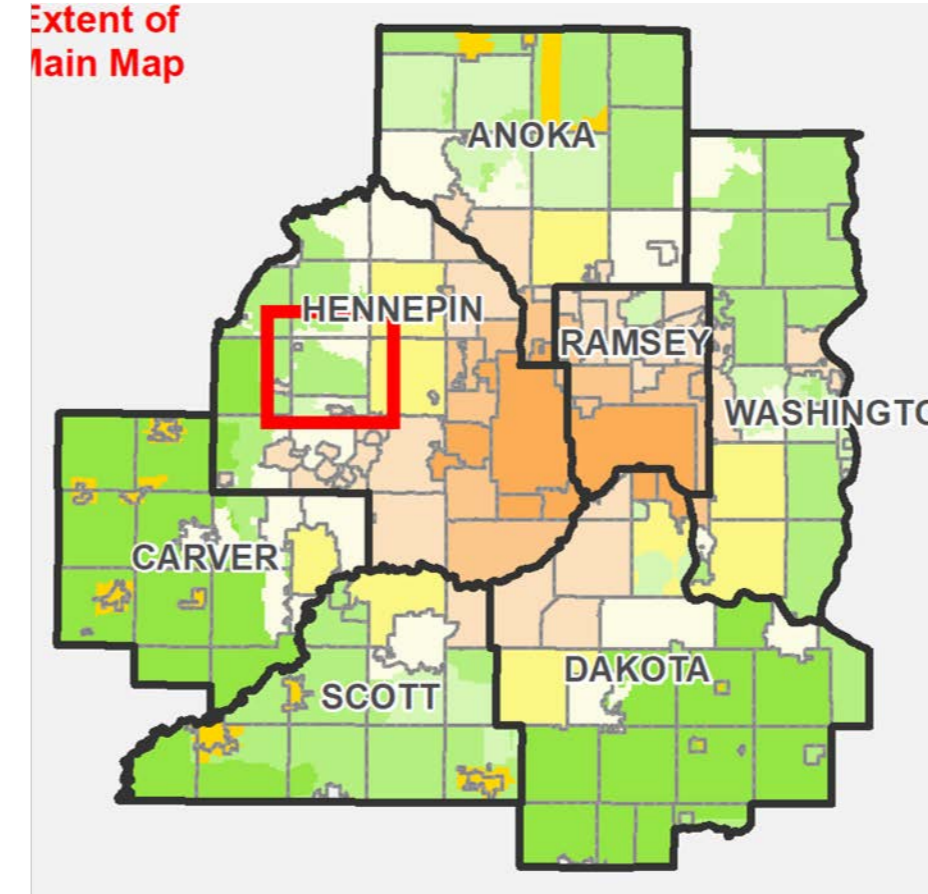
Assigned I/I Work Plans by Council



# Community Designations



Extent of Main Map



- Emerging Suburban Edge
- Diversified Rural

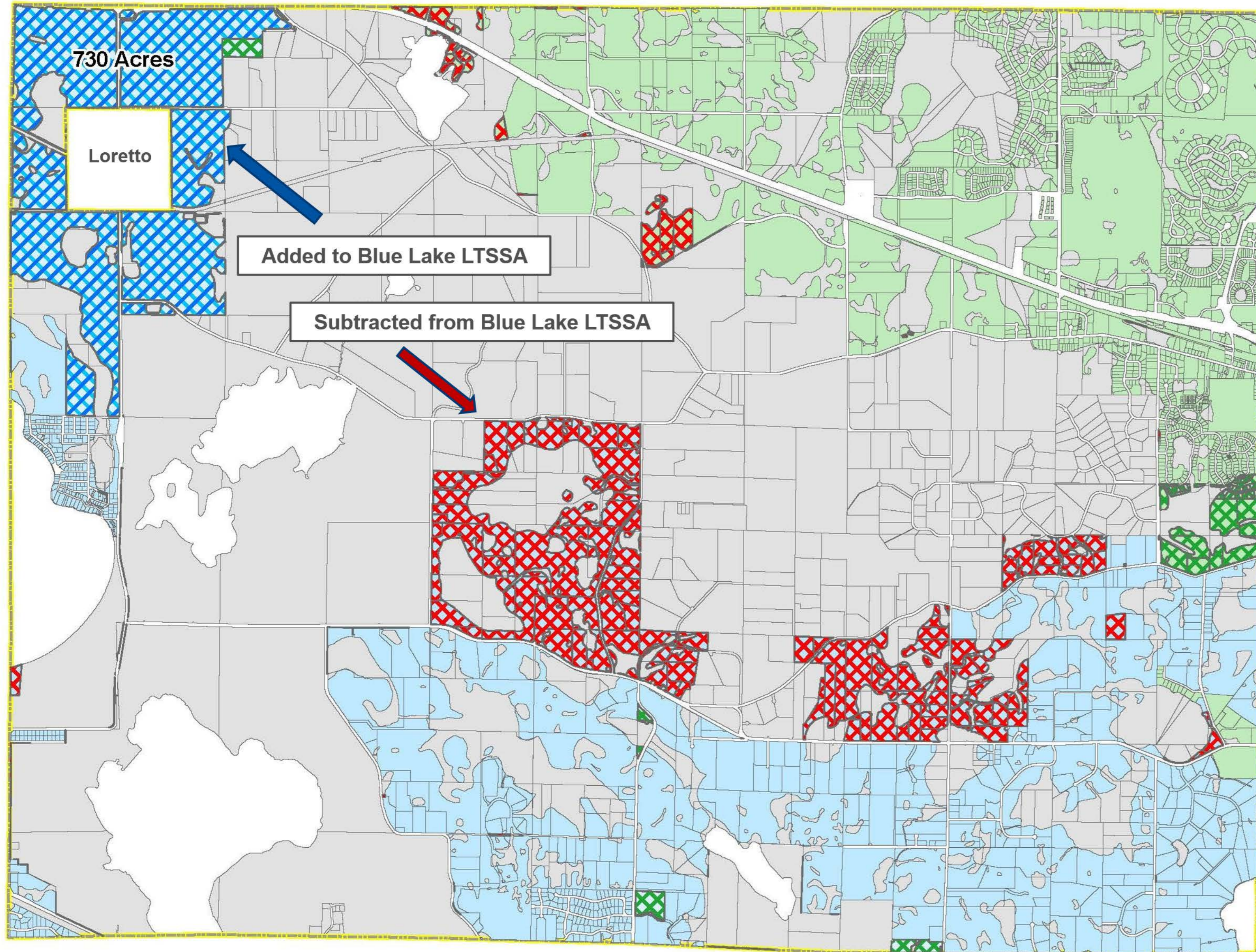
# Inflow and Infiltration Mitigation Efforts

- Medina has been identified as a contributor of excess Inflow and Infiltration (I/I).
- \$621,580 in work plan assignments since 2011.
- Applied for and received \$30,548 in State Bond I/I Grants.
- Plan includes defined goals, policies and strategies for I/I reduction in both the public and private property portions of the local system.
- Developing Ordinance to require “disconnection” of foundation drains, sump pumps and rain leaders.
- Developing implementation plan for preventing and eliminating excessive I/I from entering both the public and private sewer systems.

# Special Consideration(s)

- Initial request to virtually eliminate Long Term Sewer Service Area (LTSSA) from City
- Recognized change in Wastewater System Plan
  - Regional LTSSA in portion of City was changed from Metropolitan Wastewater Treatment Plant to Blue Lake Wastewater Treatment Plant service area
    - Service to Loretto
    - Long term capacity concerns in Elm Creek Interceptor
- Removal of 763 acres from LTSSA

# Long Term Sewer Service Area (LTSSA)



## Long Term Service Areas

- Blue Lake & Potential Blue Lake
- Metro
- Switched from Metro to Blue Lake (730 Acres)
- Removals (873 Acres)
- Additions (110 Acres)
- Boundaries
- City of Medina

**Net Removal: 763 Acres**

# Thrive Lens Analysis

## Stewardship

Timing infrastructure investments when needed. Supports Council's role in stewardship of regional funds, (Rates & Debt Service)

## Prosperity

Keeping regional wastewater rates and debt service low. Rates are currently one of the lowest in the Country and attractive for economic development.

## Sustainability

By ensuring that local communities continue to work on I/I mitigation efforts, regional system capacity can be recaptured or maintained, delaying the need for regional wastewater improvements.

Stewardship

Prosperity

Equity

Livability

Sustainability

Integration

Collaboration

Accountability





# Comprehensive Sewer Plan Findings

- Conforms with the Regional Wastewater System Plan
- Consistent with other Council adopted plans and policies
- Satisfies all the required plan elements
- Regional Wastewater System with its scheduled improvements has sufficient capacity to serve the City's projected growth as stated in the Plan

## Advisories

- City to submit executed copy of amended local ordinance that requires disconnection of existing foundation drains, sump pumps and roof leaders from the sanitary sewer system.

# Proposed Action (*Environment Committee*)

- That the Metropolitan Council adopt the Advisory Comments and Review Record and approve the proposed recommendations of the Environment Committee as written in the business item which includes:
  - Approval of the Comprehensive Sewer Plan portion of the City's 2040 Comprehensive Plan Update

# Questions