

Information Item: Inflow and Infiltration Program Update

Jeannine Clancy, Assistant General Manager, Technical Services
Marcus Bush, PE, Principal Engineer

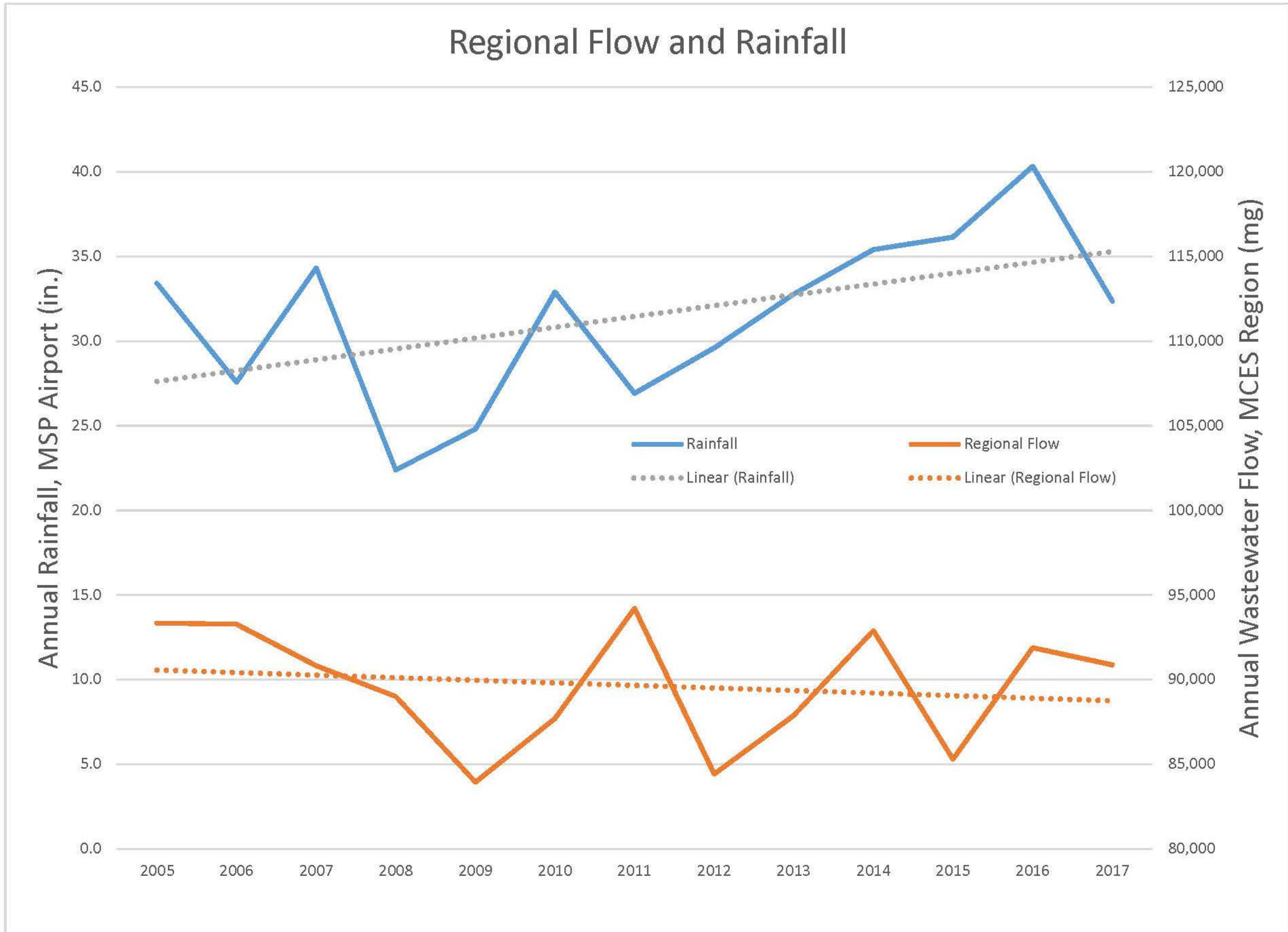
Environment Committee: January 23, 2018



Recommended Task Force Initiatives

- Continue to balance regional standards with community needs
- Support efforts for funding public and private Inflow and Infiltration mitigation
- Develop robust public outreach program for communities
- Develop best practices and model ordinances
- Provide technical assistance, including a demonstration program

Annual Trends of Rain and Wastewater



Investments: Past and Future

Completed investments

- **MCES**
 - \$100 Million since 2007
 - Apply same criteria as Inflow and Infiltration Program to Capital Program
- **Communities**
 - \$164 Million since 2007
 - Reported expenses to MCES through Inflow and Infiltration program

Future mitigation

- **MCES Capital Program**
 - \$100 Million per year
- **Communities**
 - \$8.3 Million planned for 2018
 - \$20 Million remaining work plans

“Unquantified and Unresolved”

- Service lateral connects each property
- Very limited funding
- Inaccessible to public works
- Year-round Inflow and Infiltration
- Big risk to local systems
- A million potential sources



Funding and Grants

Public Infrastructure

- \$9.5 Million requested for 2018 General Obligations bond
- Allocation depends on 2018 bonding bill

Private infrastructure

Public Outreach Toolbox

- Stakeholder Input
 - partner with cities, consultants, and contractors
 - plain language from a relevant viewpoint
- Collaboration – Internal & External
 - print and digital for communities to use
 - public service announcements, newsletter inserts, photos, and videos



Public Outreach – 2018

Leaks Are A Waste
 1 leaky faucet at 1 drip per second = 2,082 gallons
 LEARN MORE

Using Less Water Saves Energy
 50 loads of laundry
 LEARN MORE

Our Actions Affect The Minnesota Environment
 LEARN MORE

Leaks Are A Waste
 LEARN MORE

Reduce Summertime Outdoor Water Use
 2010 Water Consumption
 LEARN MORE

Water Energy Nexus
 LEARN MORE

Best Practices and Model Ordinances

Model ordinance draft in review

- Partner with Metro Cities and League of Minnesota Cities

Best practices

- Research what's worked elsewhere
- Develop with partners

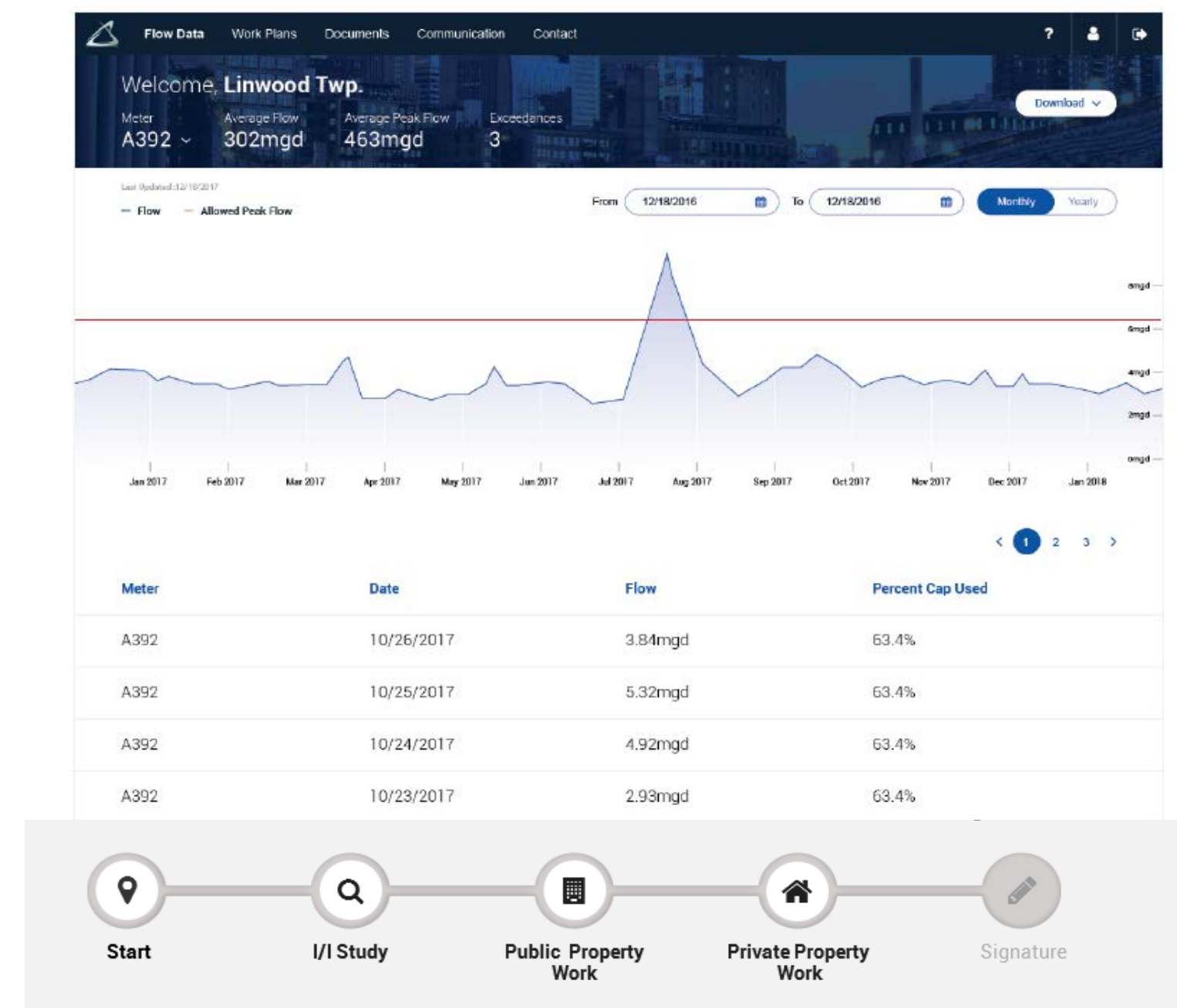
Technical Assistance

- **Demonstration Program**
 - Measure impacts of Inflow and Infiltration mitigation
 - Allocation of \$500,000
 - Identifying strategy with partner(s)
- **Flow data access**
 - Secure access for communities
 - Streamline internal processes



Data Access Portal

- Direct access for community
 - Efficient decision-making
 - Incorporate communications
 - Streamline internal processes
- Assumes future integration
 - Adaptive interface for mobile, tablet, other
 - Ability to use platform for other data needs



Eligible Credit Total
\$ 870,000

Please indicate your inspection costs for the below items.

Inspection costs of looking for sump pumps, drain tile, yard drains, and rain leaders connected to sanitary sewer.	1000	\$ 200,000
TV inspection of service laterals	1000	\$ 100,000

Please indicate the quantity of each items you would like to complete on private property and estimate the cost.

Sump Pump Disconnections	100	\$ 15,000	X
Foundation Drain Disconnections	10	\$ 30,000	X
Other	10	\$ 50,000	X

2018 Forecast

Early 2018

- model ordinance, support grants, public outreach rollout, scope demonstration project, support legislative initiatives

Mid 2018

- private property best practices, data access portal

Late 2018

- demonstration project awarded, move communications to web interface, study regional Inflow and Infiltration flows

Questions

Contacts:

i.i@metc.state.mn.us

www.metrocouncil.org/iandi

Jeannine.Clancy@metc.state.us; 651-602-1210

Marcus.Bush@metc.state.mn.us; 651-602-1166