

Information Item: MCES Customer Communities' Web Portal

Anna Bessel, Assistant Manager, Engineering Programs
Ricky Arora, Manager, Performance Excellence & Analytics

Environment Committee: October 9, 2018



Project Team

- **Performance Excellence & Analytics**

- Ricky Arora, Greg Bimberg, Todd Jameson, Ambika Shashikumar, Dunn Solutions Group

- **Inflow and Infiltration (I/I) Program**

- Anna Bessel, Marcus Bush, Kyle Colvin, Angela Mazur

- **Metering & Alarm**

- Joe Manns, Pat Payne, Ryan Vial

- **Information Services**

- Eirik Felter, Sue Hauge, Rick McCoy, John Shay

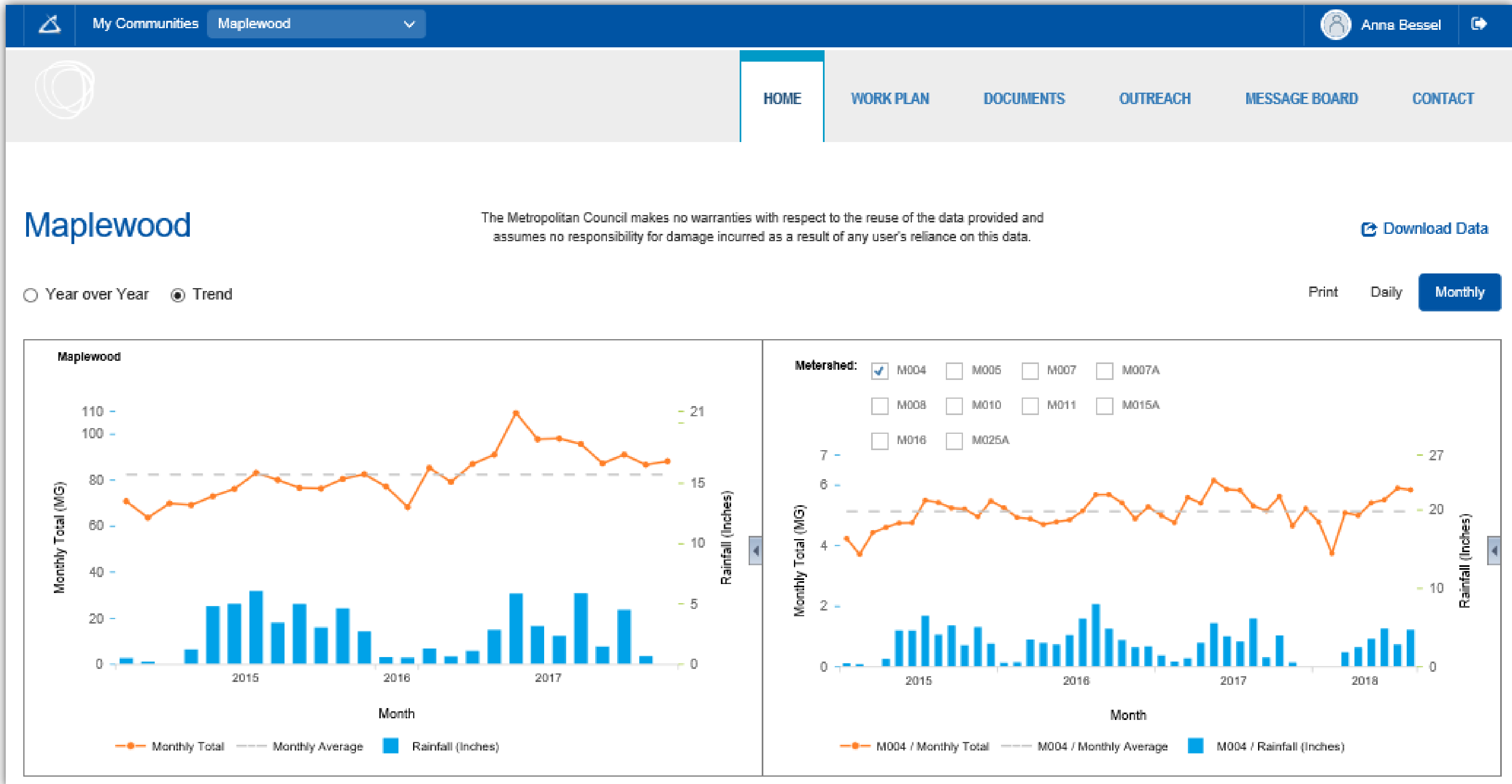
Flow Data Web Portal

- A centralized online location for communities to obtain flow data and Inflow and Infiltration (I/I) Program-related information
- Supports the MCES Customer Level of Service
- Identified as an initiative of the MCES Customer Service Working Group

Project Drivers

- Provides customer communities with desired access to flow data and I/I Program information
- Timely, accurate data
- Local public outreach materials
- Builds customer relationships
- Streamlined communication

Demonstration



<http://liferay.metc.state.mn.us/>

Next Steps

- Procure Liferay software
- Implement, deploy, and test software on Council servers
- User acceptance testing (internal & external)
- Release portal to customer communities
- Potential expansion to other areas, such as MCES sewer surveys and grants

Questions

For more information, contact:

- Flow Data Web Portal
 - Ricky Arora, Manager, Performance Excellence & Analytics
- I/I Program
 - Marcus Bush, Principal Engineer, Engineering Programs
- Customer Service Working Group
 - Anna Bessel, Assistant Manager, Engineering Programs