

# **Business Item: 2019-231JT**

## **City of Minneapolis 2040 Comprehensive Sewer Plan, Review File 22166-1**

Kyle L. Colvin, Manager, Engineering Programs

Environment Committee: August 27, 2019

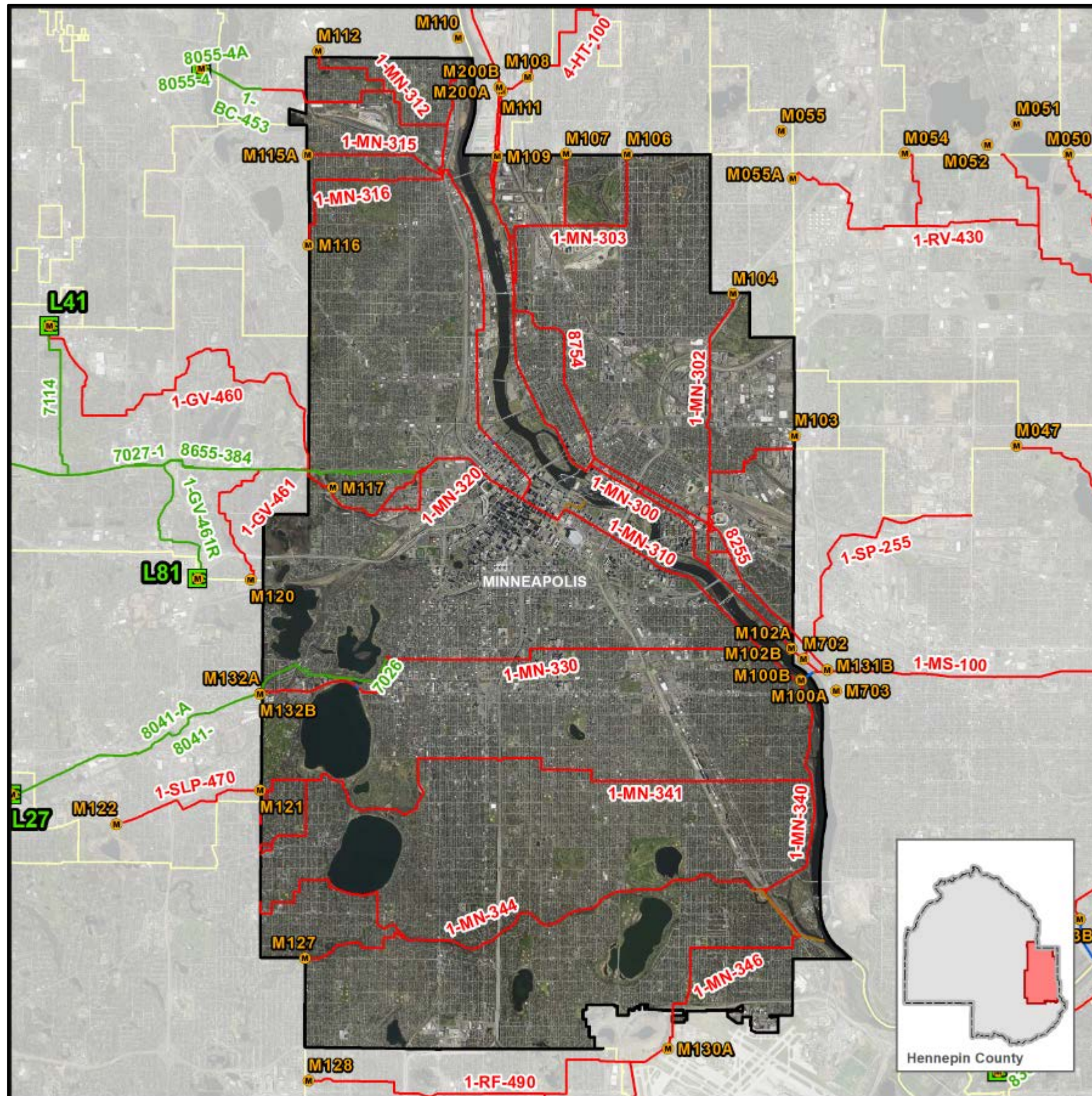


# Minneapolis Comprehensive Plan Update

- 8/19/19 – Community Development Committee (Comprehensive Plan Update)
  - Request Council to advise City to Implement 2040 Plan
- **8/27/19 – Environment Committee (Wastewater Plan)**
  - Request Council to formally approve Wastewater Plan
- 9/29/19 – Metropolitan Council (Final Actions)
  - Formal approval of Wastewater Plan
  - Advise City to Implement 2040 Plan



# Location



- Hennepin County
- Metropolitan Council Districts: 6, 7, 8

## Wastewater Service Statistics

Year	Households	Employment
2020	190,700	332,400
2040	<u>212,500</u>	<u>360,000</u>
+/-	+21,800	+27,600

Minimum sewerage Residential Density consistent with Urban Center Communities

Assigned Inflow and Infiltration Work Plans by Council



# Inflow and Infiltration Mitigation Efforts

- Minneapolis has been identified as a contributor of excess Inflow and Infiltration (I&I).
- Has committed to approximately \$6 million annually in I&I mitigation work.
- Applied for and received \$1.82 million in State Bond I&I Grants.
- Plan includes defined goals, policies, and strategies for I&I reduction in both the public and private property portions of the local system.
- Ordinance that prohibits and requires disconnection of foundation drains, sump pumps, and rain leaders.
- Point of Sale disclosure and inspection for sump pump compliance.
- 2008 Memorandum of Understanding with Metropolitan Council that commits to a joint study of the local and regional collection system.

# Plan Characteristics

- Integrated Storm Water and Wastewater Plan
  - Council approval of the wastewater plan applies only to those elements related to sanitary sewer service, policies, strategies, and management practices.
  - The Plan reflects revised forecasts to reflect development capacities and know projects now in development.

# Plan Characteristics

- Sewered Growth Forecasts 2040 versus 2030

Plan Update	2010	2020	2030	2040
<b><u>2030 Plan</u></b>				
Population	405,330	425,800	441,143	-
Households	172,740	181,980	189,400	-
Employment	317,000	332,500	346,500	-
<b><u>2040 Plan</u></b>				
Population	-	436,000	460,000	485,000
Households	-	190,700	200,900	212,500
Employment	-	332,400	346,200	360,000
<b>Difference (2040 - 2030)</b>				
Population		+10,200	+18,857	
Households		+8,720	+11,500	
Employment		-100	-300	

# Comprehensive Sewer Plan Findings

- Conforms with the Regional Wastewater System Plan
- Consistent with other Council adopted plans and policies
- Satisfies all the required plan elements
- Regional Wastewater System with its scheduled improvements has sufficient capacity to serve the City's projected growth as stated in the Plan

## Advisories

- A copy of the City Council resolution adopting its 2040 Comprehensive Plan, including its Comprehensive Sewer Plan, must be submitted to the Council.

## Proposed Action *(Environment Committee)*

- That the Metropolitan Council adopt the Advisory Comments and Review Record and approve the recommendations of the Environment Committee as written in the business item which includes:
  - **Approval of the Comprehensive Sewer Plan component of the City of Minneapolis's Comprehensive Plan.**



# Questions

Kyle Colvin, Manager, Engineering Programs

651-602-1151

[Kyle.colvin@metc.state.mn.us](mailto:Kyle.colvin@metc.state.mn.us)