

Information Item: Water Resources Section Overview

Judy Sventek, Manager, Environmental Quality Assurance

Dan Henely, Assistant Manager, Environmental Quality Assurance

Environment Committee: August 27, 2019



Water Resources Program Overview

Purpose

Provide leadership and information to empower Council and local actions that ensure clean, healthy and sustainable water resources for the region.

Vision

Our region's waters fully support public and ecosystem health, economic growth, and all recreational uses for current and future generations.



Water Resources Policy Plan Direction

Water Sustainability:

Protect, conserve and utilize the region's groundwater and surface water in ways that protect public health, support economical growth and development, maintain habitat and ecosystem health, and provide for recreational opportunities, all of which are essential to our region's quality of life.

Watershed Approach:

The Council will work with our partners to develop and implement a regional watershed-based approach that addresses both watershed restoration (improving impaired waters) and protection (maintaining water quality unimpaired waters).

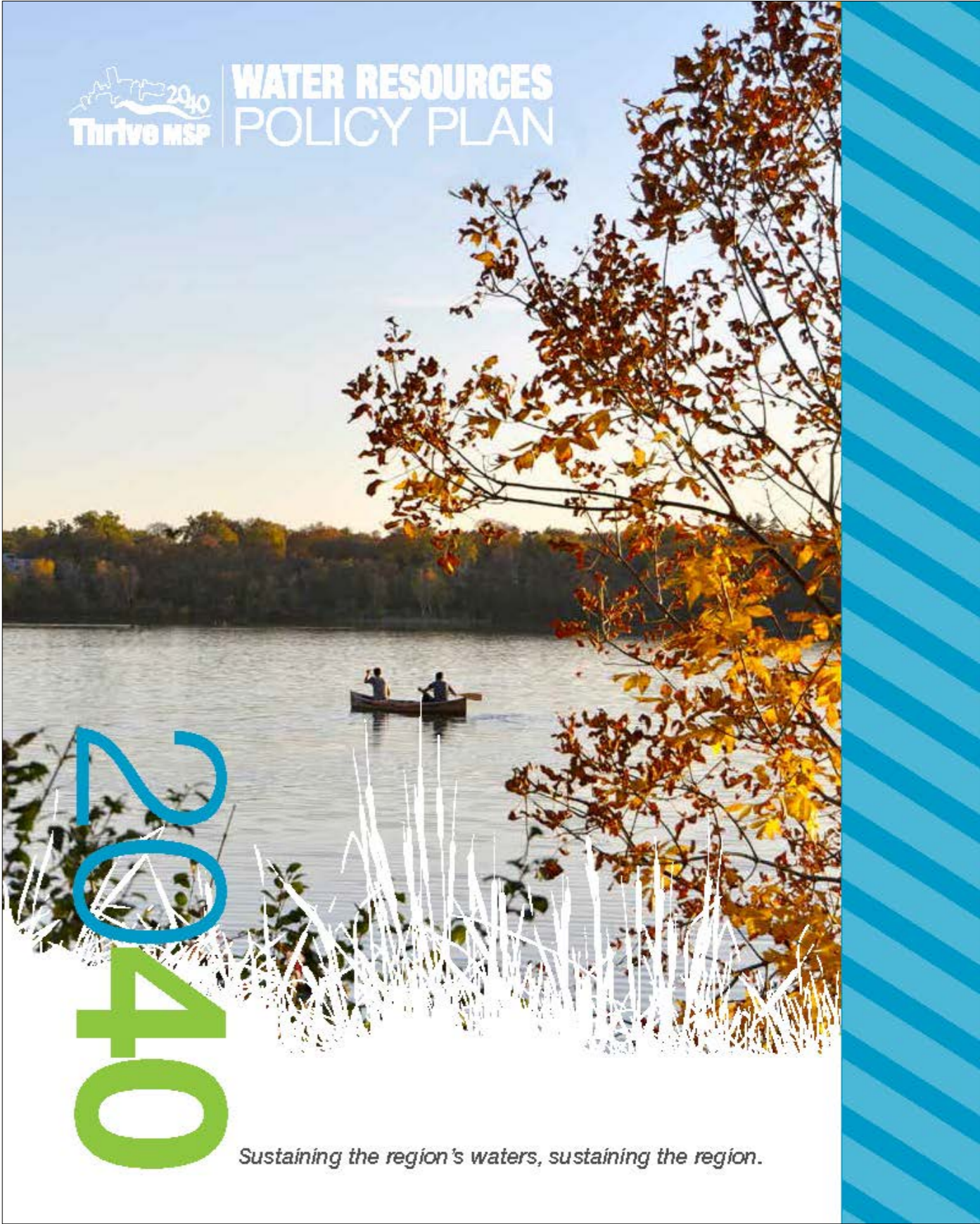
Assessing and Protecting Regional Water Resources:

The Council will continue to assess the condition of the region's lakes, rivers, streams, and aquifers to evaluate impacts on regional water resources and measure success in achieving regional water goals.

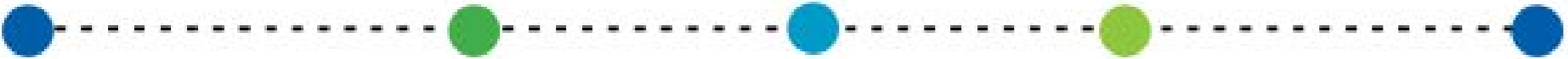
Regional Surface Water Planning and Policy

Be a leader for the region

Provide direction and support in surface water planning and management to ensure management policies, programs, and best practices are implemented to protect and restore water quality in the region



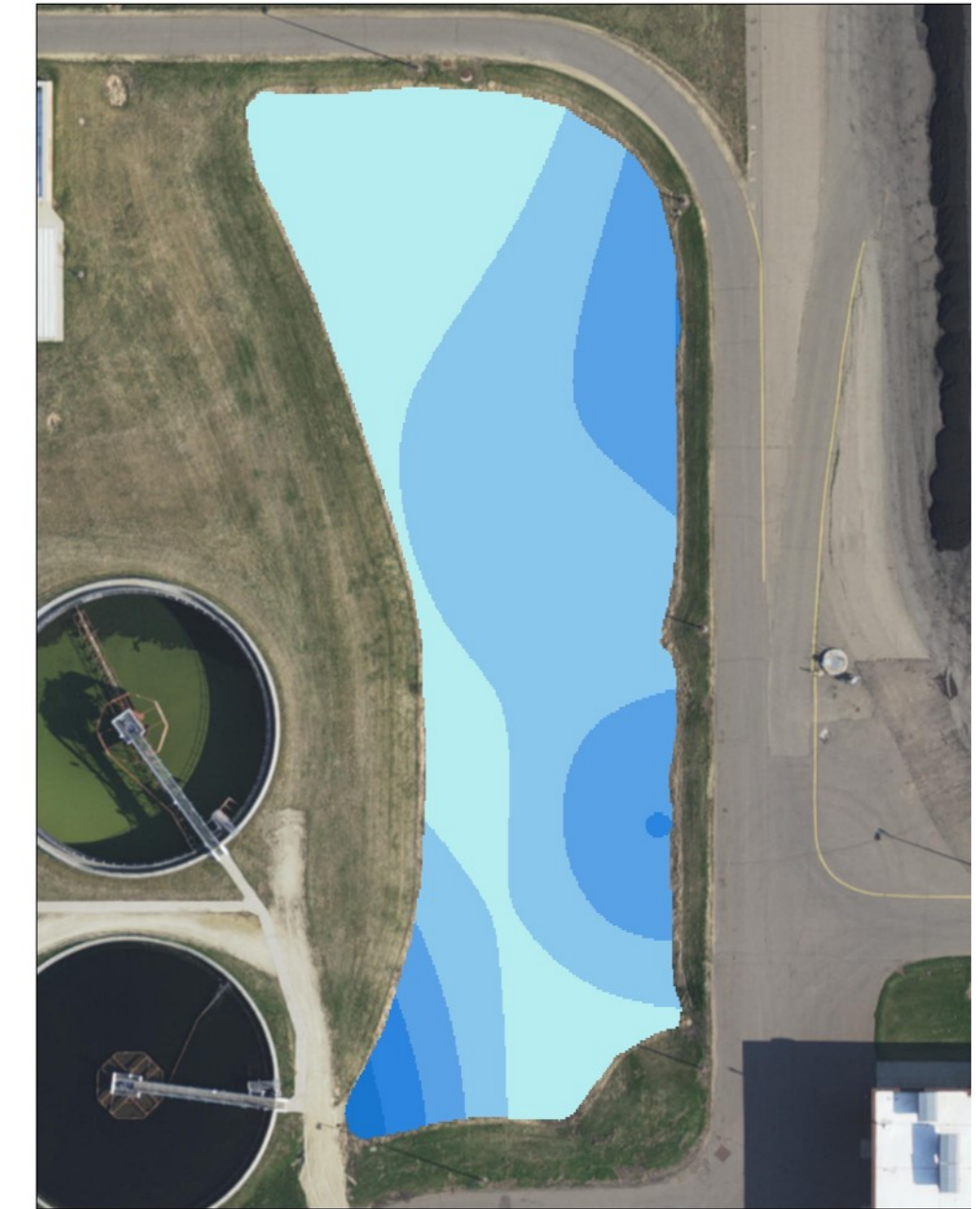
Stewardship Prosperity Equity Livability Sustainability



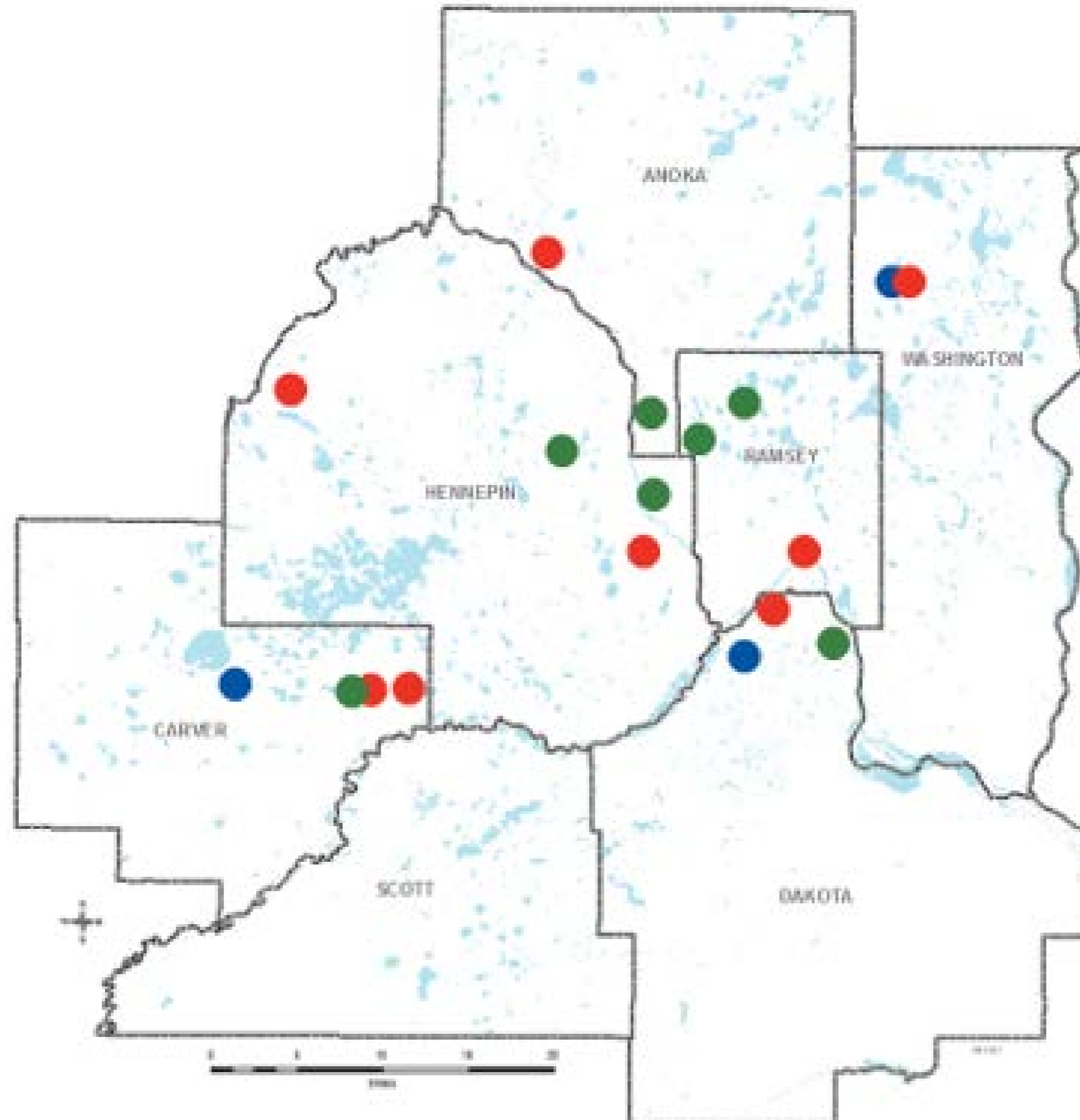
Stormwater

Monitor stormwater practices and their effectiveness at Empire

Share information and research about practice effectiveness



Stormwater Grant Locations



2015 Awards:
\$800,000

2016 Awards:
\$1,000,000

2017 Awards:
\$1,000,000

Policy Outreach and Collaboration

Watershed Outlet Monitoring Program (WOMP)

Citizen Assisted Monitoring Program (CAMP)

Twin Cities –Water Monitoring and Data Assessment Group

Governor’s “One Minnesota” and climate change themes



Youth & General Public Education

Children's Water Festival

Teaching Externship

University of St. Thomas
Sustainable Communities
Partnership

Pollution Prevention Days



Sharing Knowledge

Environmental Information Management System (EIMS)

The image displays five overlapping screenshots of the Metropolitan Council's Environmental Information Management System (EIMS) website. The screenshots illustrate the user interface for navigating and searching for environmental data.

- Home Page:** The first screenshot shows the EIMS Home page with a navigation menu (EIMS HOME, BASIC SEARCH, ADVANCED SEARCH, POLLUTANT LOADS, DOCUMENTS, FAQ) and a section titled "ENVIRONMENTAL INFORMATION MANAGEMENT SYSTEMS (EIMS)".
- Basic Search:** The second screenshot shows the "BASIC SEARCH" page, featuring a map of the Minneapolis-St. Paul area with location markers and a "BEGIN BASIC SEARCH" button.
- Location Details:** The third screenshot shows the "BASSETT CREEK Location Details" page, including a map of the creek and a "Description" section.
- Advanced Search:** The fourth screenshot shows the "ADVANCED SEARCH" page, which includes filters for "STEP 1: FILTER", "BY LOCATION [REQUIRED]", "TEXT SEARCH", and "MAP SEARCH".
- Documents Search:** The fifth screenshot shows the "EIMS DOCUMENTS SEARCH" page, displaying a search bar, a list of documents (e.g., "Metropolitan Council Continuous Data Web Service Guide", "2016 Year in Review - Water Resources Group", "2015 River Water Quality Summary", "2015 Stream Water Quality Summary"), and a sidebar with filters for "CATEGORY" and "YEAR".

River and Stream Program Overview

Permit compliance and regulatory strategy

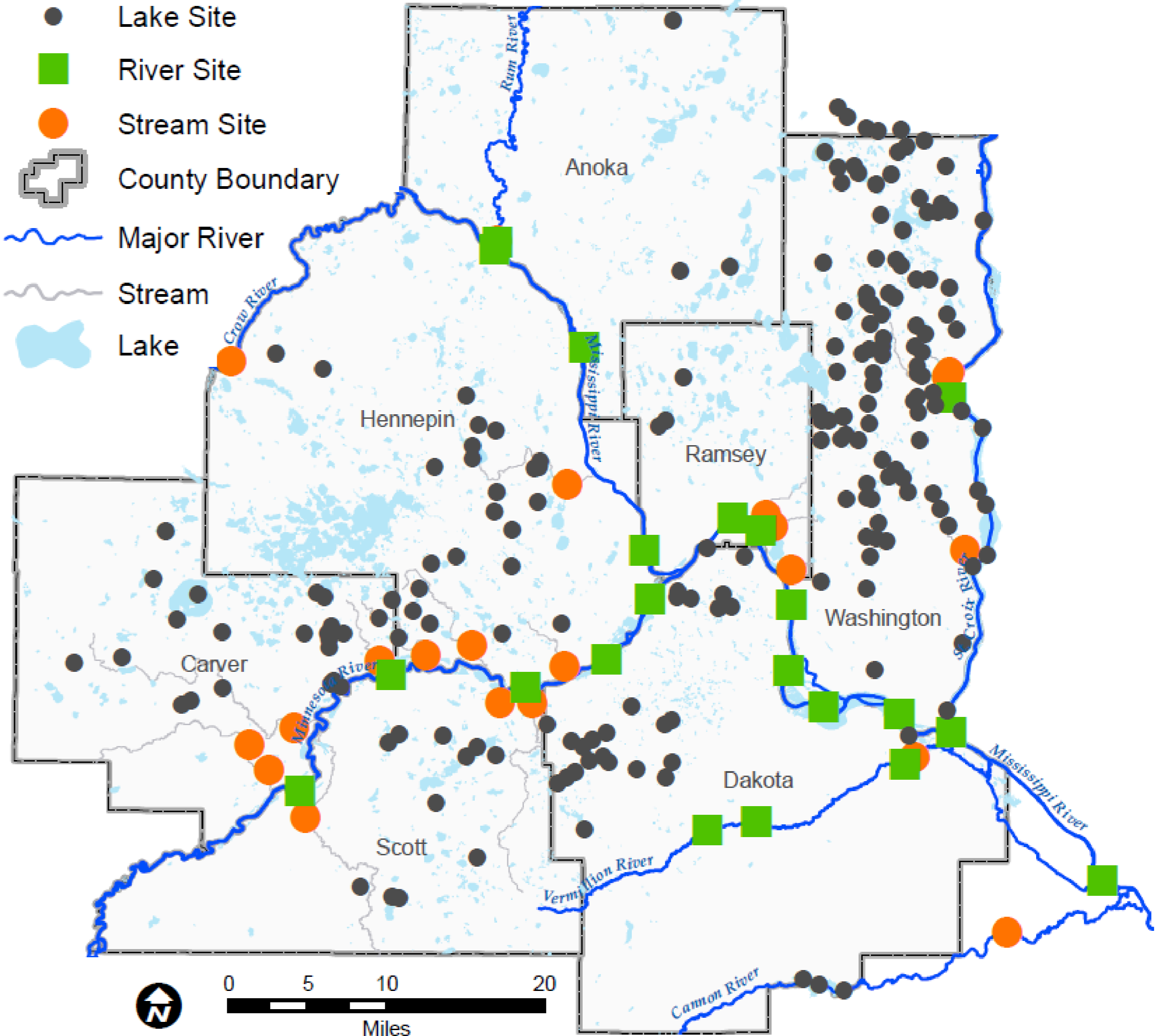
Baseline data to inform planning and management efforts

NPDES requirements and technical support

Data to support informed decisions and effectiveness of watershed improvements

Monitor and assess regionally significant streams and build local expertise



MCES 2017 Surface Water Monitoring



Rivers and Streams Continued



TREND ASSESSMENT OF REGIONAL RIVER WATER QUALITY IN THE TWIN CITIES METROPOLITAN AREA (1976 – 2015)



METROPOLITAN COUNCIL

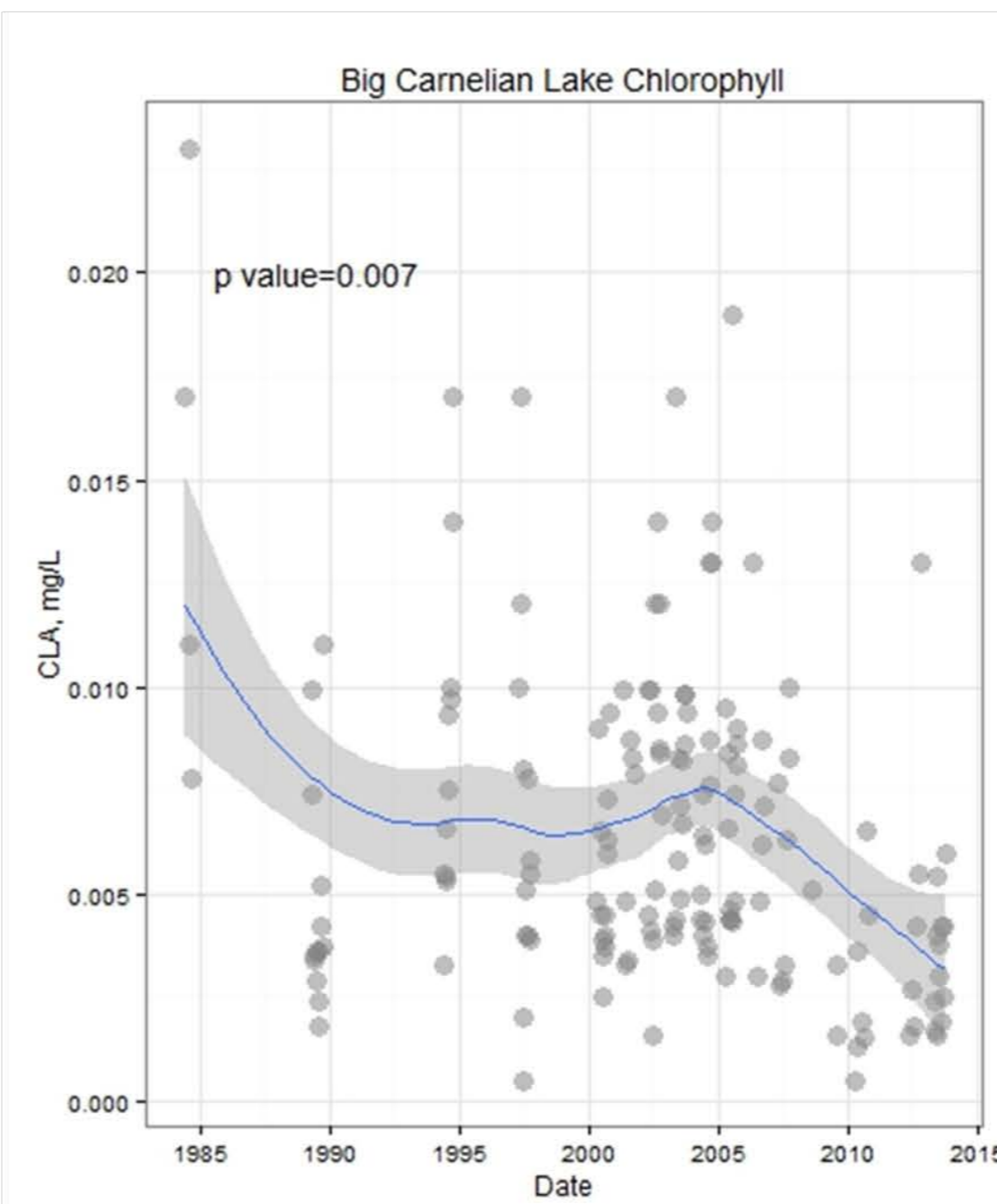
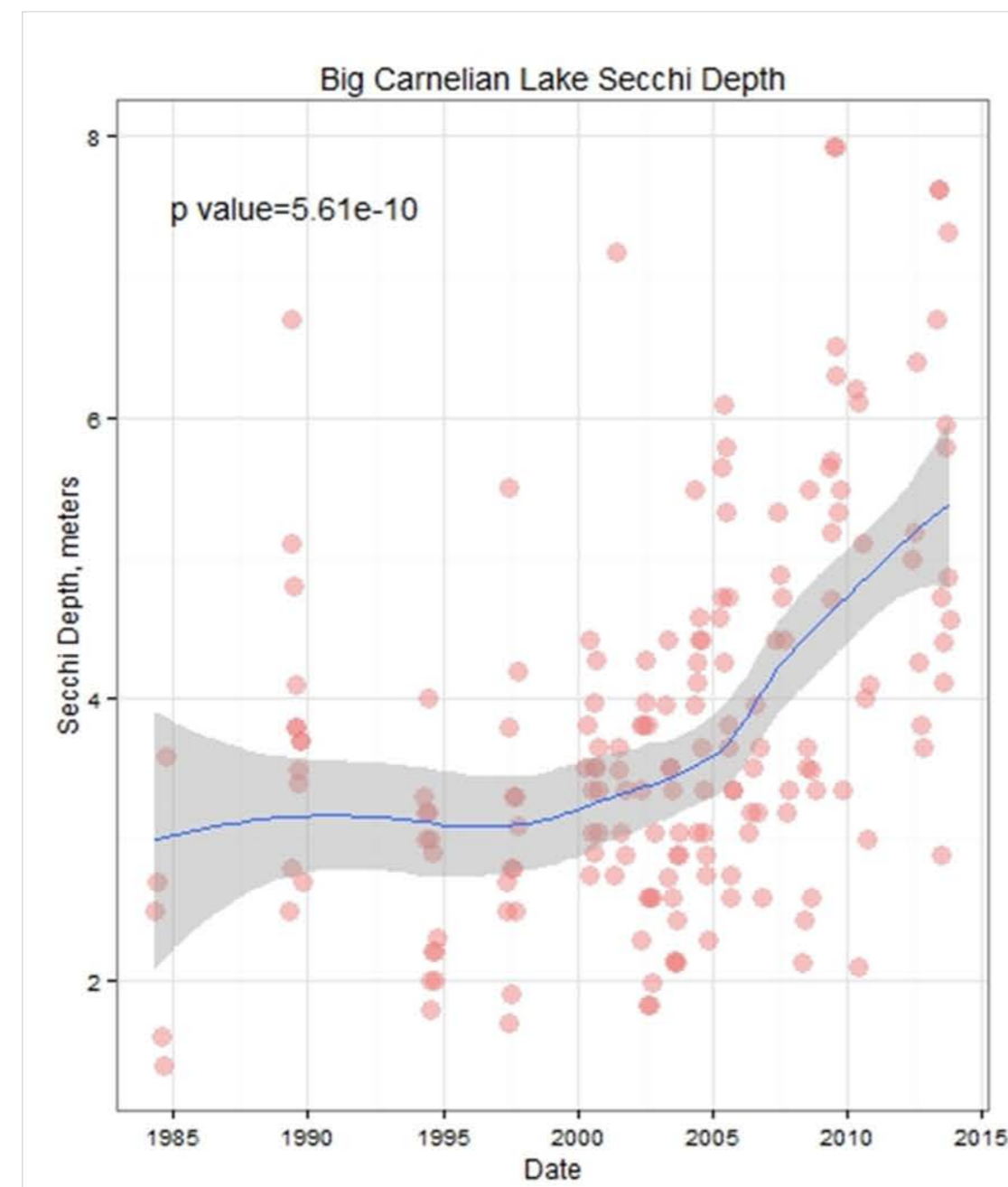


Lake Program Overview

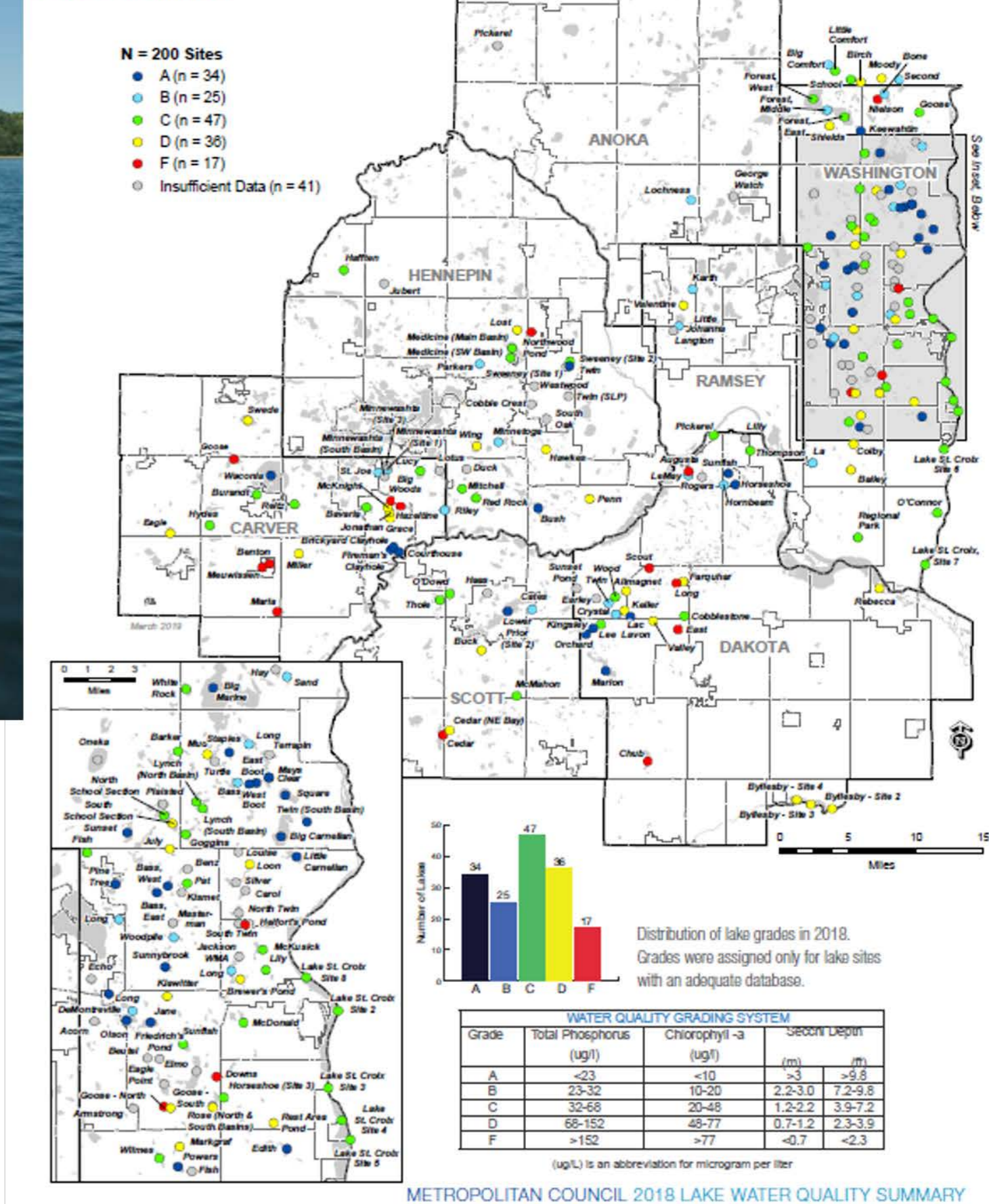
Water data for use in effectively managing region's lakes

Regional coverage

Engage citizen scientists



2018 LAKE GRADES



Questions

Judy Sventek, Manager

Environmental Quality Assurance/Water Resources

Judy.Sventek@metc.state.mn.us

651-602-1156

Daniel Henely, Assistant Manager

Environmental Quality Assurance/Water Resources

Daniel.Henely@metc.state.mn.us

651-602-8085