

## **Business Item: 2019-137**

# **City of Burnsville 2040 Comprehensive Sewer Plan, Review File 21907-1**

Kyle L. Colvin, Manager, Engineering Programs

Environment Committee: June 11, 2019

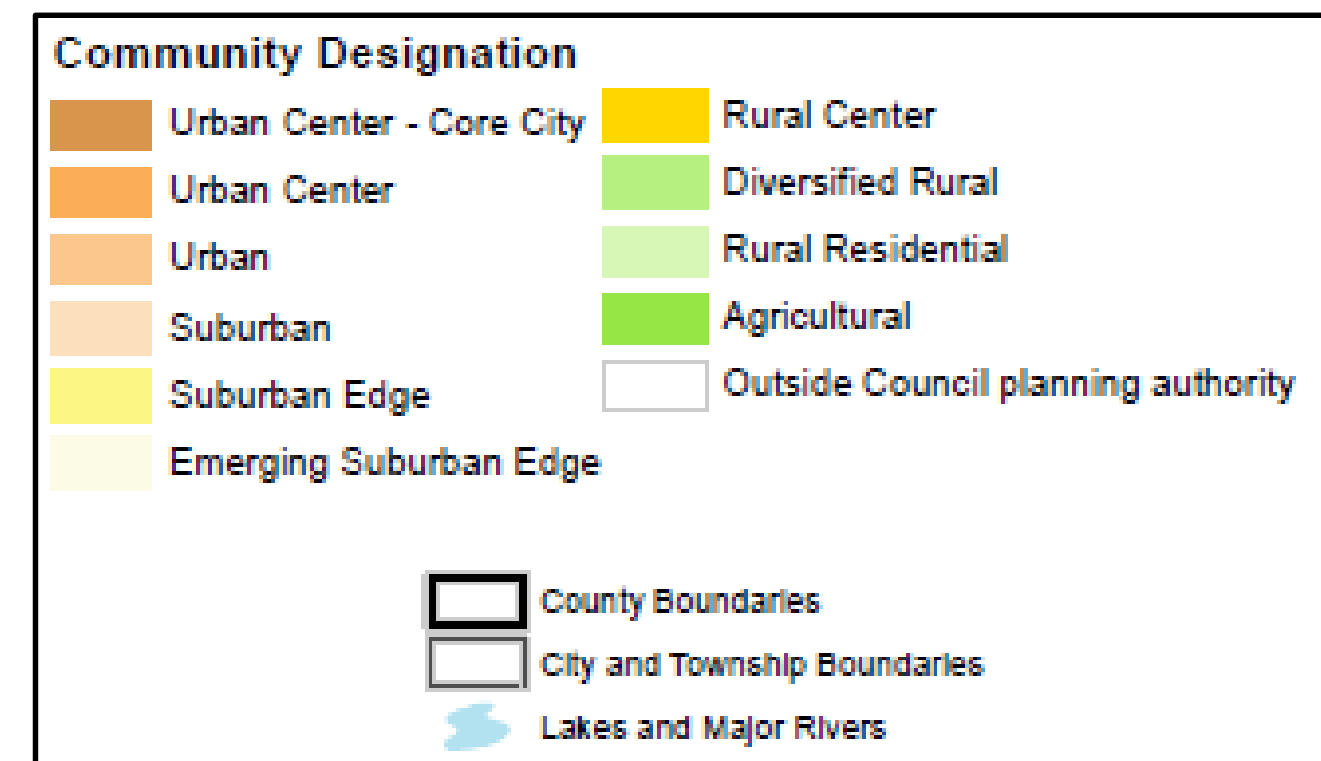
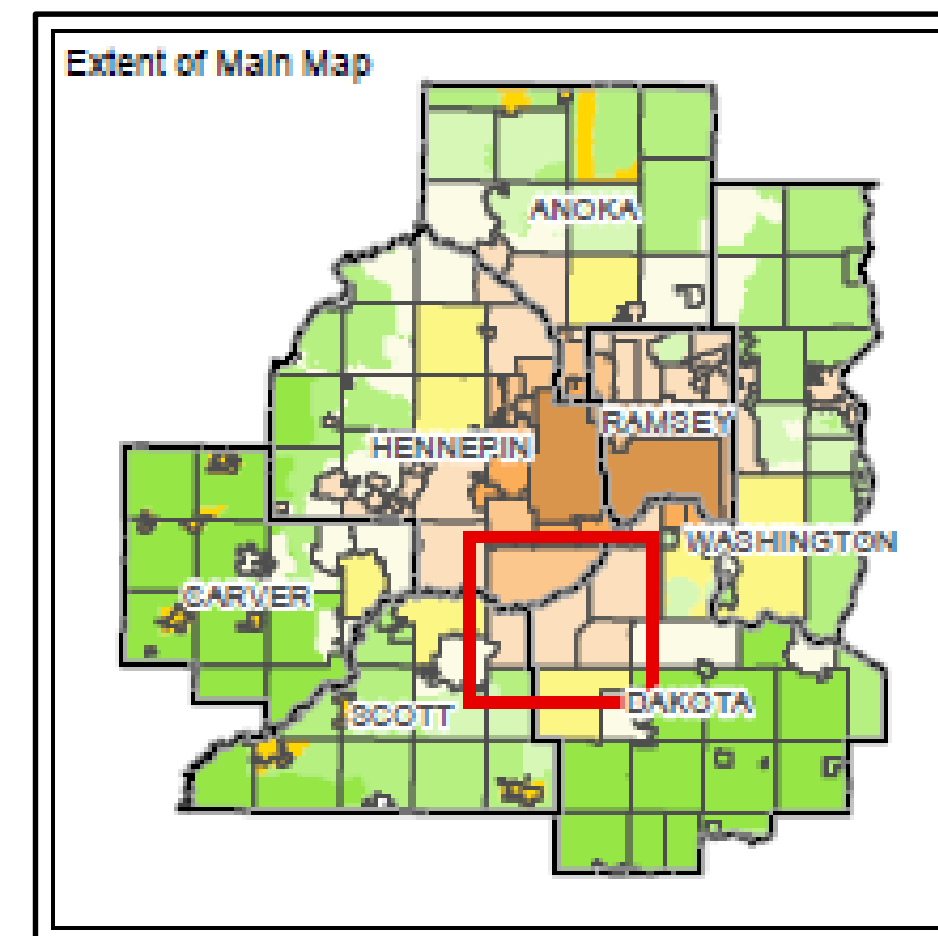
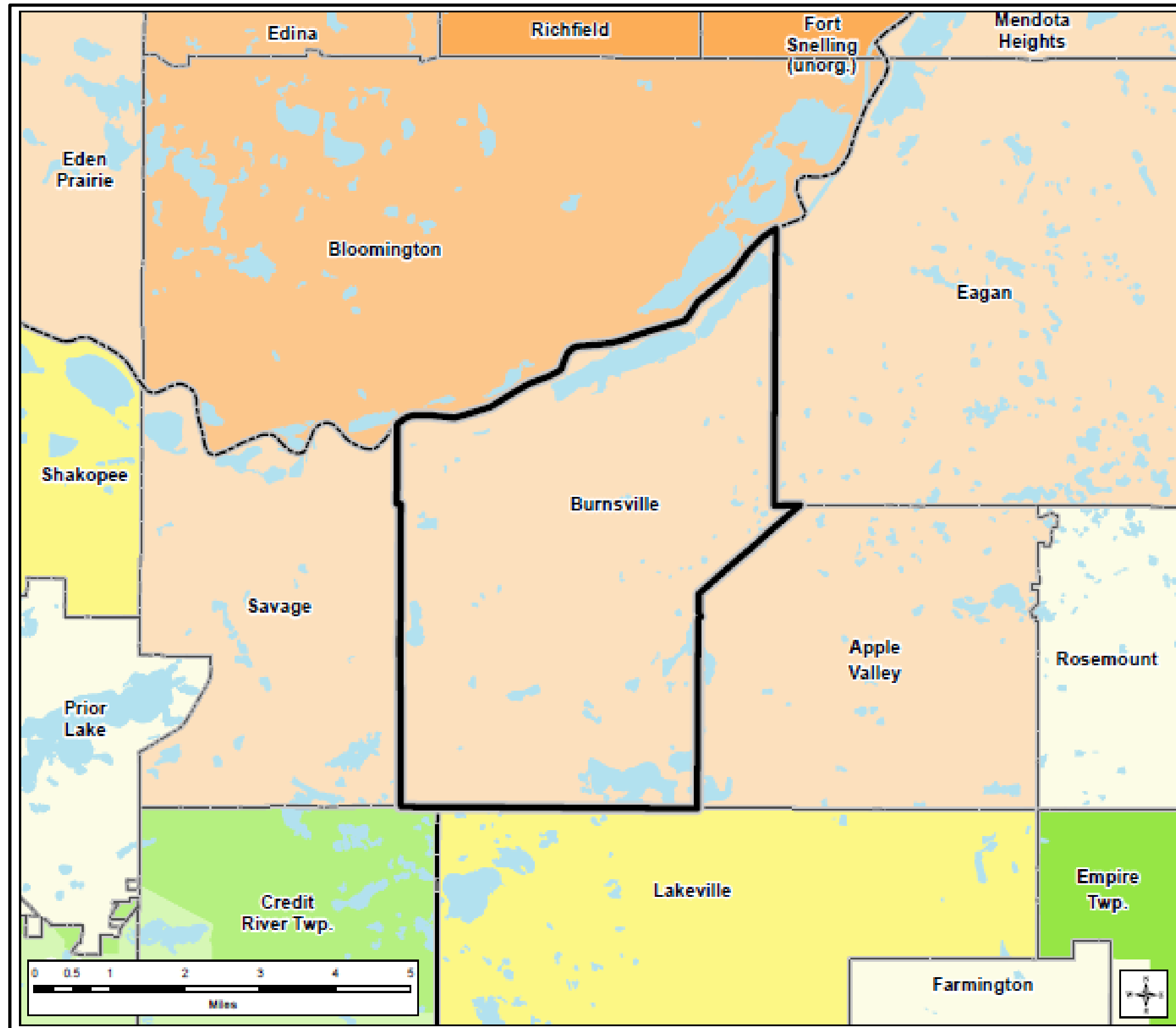


# Burnsville's Comprehensive Plan Update

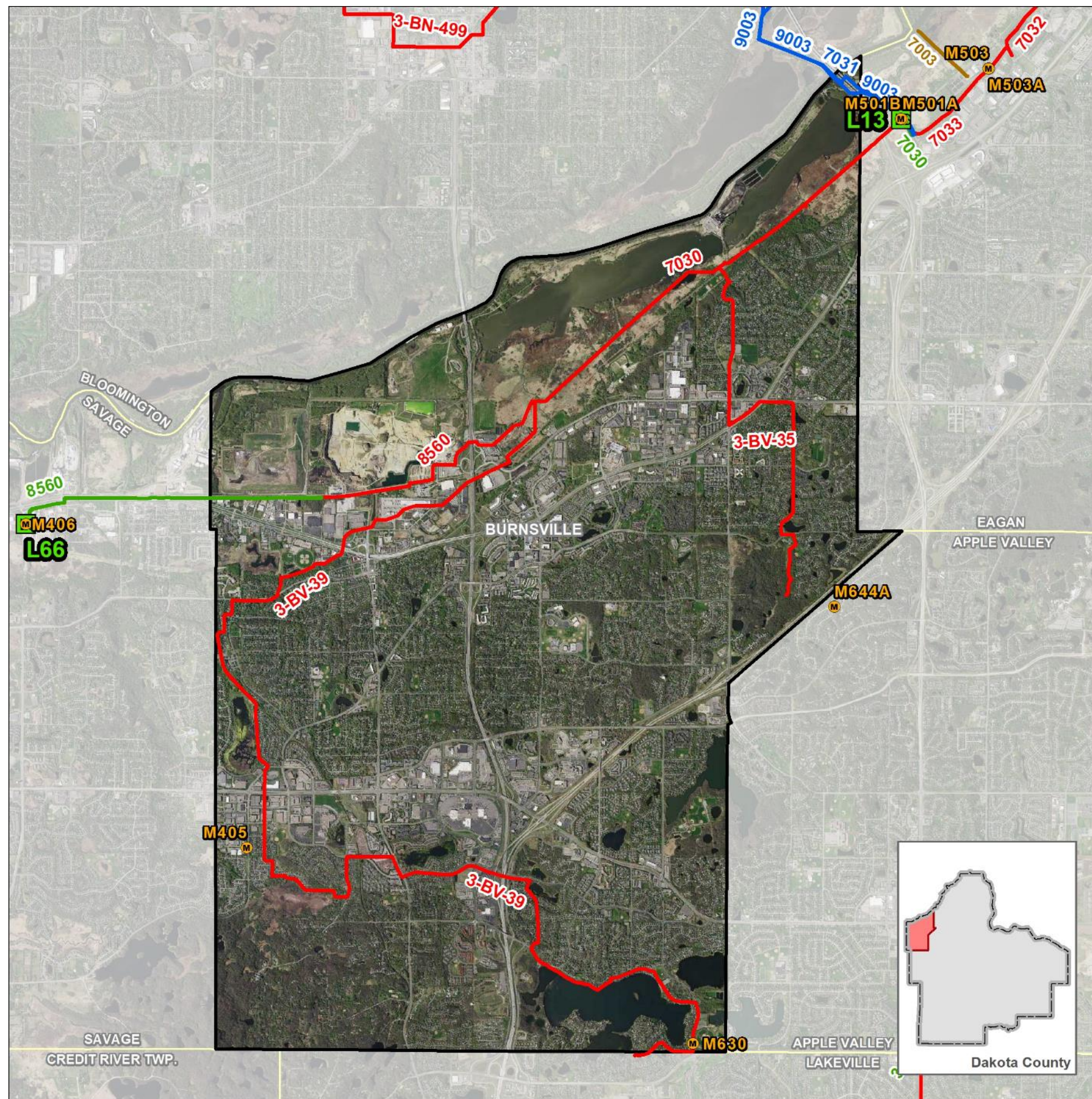
- June 03, 2019 – Community Dev. Committee (Comprehensive Plan Update)
  - Request Council to advise City to Implement 2040 Plan
- **June 11, 2019 - Environment Committee (Wastewater Plan)**
  - Request Council to formally “Approve” of Wastewater Plan
- June 26, 2019 – Metropolitan Council (Final Actions)
  - Formally “Approval” of Wastewater Plan
  - Advise City to Implement 2040 Plan

# Community Designations – Burnsville

## Suburban



# Location



- Dakota County
- Metropolitan Council District 15

## Wastewater Service Statistics

Year	Households	Employment
2020	1,032	3,146
2040	<u>2,630</u>	<u>5,300</u>
+/-	+1,598	+2,154

Minimum sewer Residential Density: 14.6 Units per acre

SSTS': 229

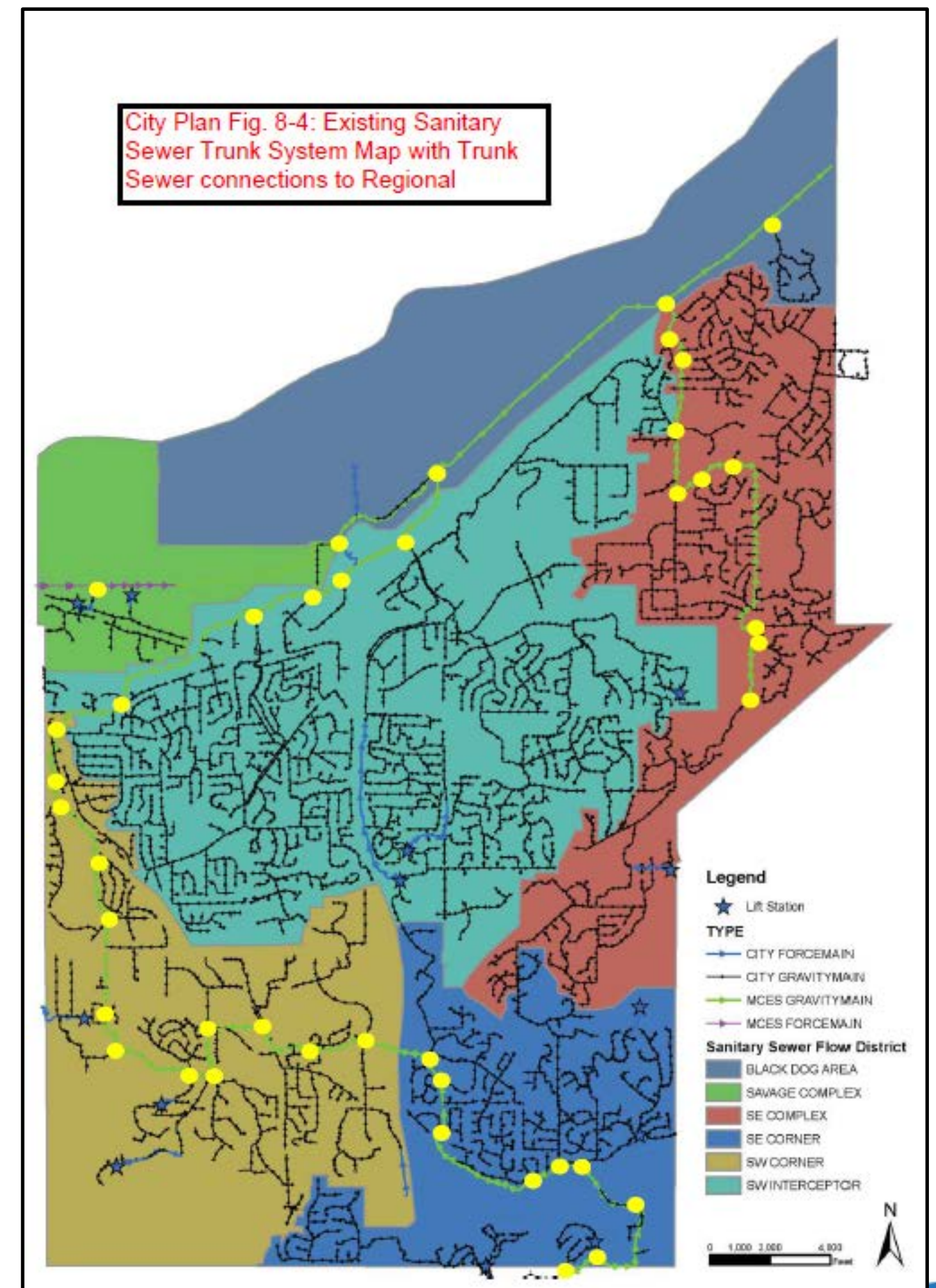
**No Assigned I/I Work Plans by Council**

# Inflow and Infiltration Mitigation Efforts

- City has **NOT** been identified as a contributor of excess Inflow and Infiltration (I/I) since the program's inception in 2007.
- City's system flow shows little response to wet weather cycles or storm related events.
- Plan does not include specific goals, policies, or strategies for I/I reduction but describes a continued inspection and system evaluation approach.
- Revising Ordinance that prohibits the discharge of sump pumps, foundation drains and roof leaders to the sanitary sewer system.
- In lieu of requiring disconnection of such discharges upon discovery, the City will offer "informational resources" regarding the disconnection of such connections.
- Evaluate the effectiveness of its educational program.

# Future Required Submittal

- The WRPP: Plans required to include capacity and design flows for existing local trunk sewers and lift stations that connect directly to the regional system.
- Information is reviewed for potential future capacity improvements and impacts to the regional wastewater system.
- City does not currently have this information but has committed to:
  - Development of a hydraulic model and;
  - Evaluate local system capacity analysis of the City's entire collection system.
  - Identify locations of capacity restrictions.



# Comprehensive Sewer Plan Findings

- Conforms with the Regional Wastewater System Plan
- Consistent with other Council adopted plans and policies
- Satisfies all the required plan elements (*except for local system capacity information*)
- Regional Wastewater System with its scheduled improvements has sufficient capacity to serve the City's projected growth as stated in the Plan

## Advisories

- Submit a copy of the final adopted revised ordinance that prohibits the discharge from sump pumps, foundation drains, and rain leaders to the sanitary sewer system

# Comprehensive Sewer Plan Findings (Continued)

## Advisories (continued)

- Submit to the Metropolitan Council capacity and design flow information for City's lift stations, and each trunk sewer that connects to the regional system once it completes its hydraulic model of its wastewater system.
- A copy of the City Council resolution adopting its 2040 Comprehensive Plan, including its Comprehensive Sewer Plan, must be submitted to the Council.



# Proposed Action *(Environment Committee)*

- That the Metropolitan Council adopt the Advisory Comments and Review Record and approve the proposed recommendations of the Environment Committee as written in the business item which includes:
  - **Approval of the Comprehensive Sewer Plan portion of the City's 2040 Comprehensive Plan Update**

# Questions

Kyle Colvin, Manager, Engineering Programs

Ph. 651-602-1151

[Kyle.colvin@metc.state.mn.us](mailto:Kyle.colvin@metc.state.mn.us)