

Joint Business Item: 2019-60
**City of Newport 2040 Comprehensive
Sewer Plan, Review File 21915-1**

Kyle L. Colvin, Manager, Engineering Programs

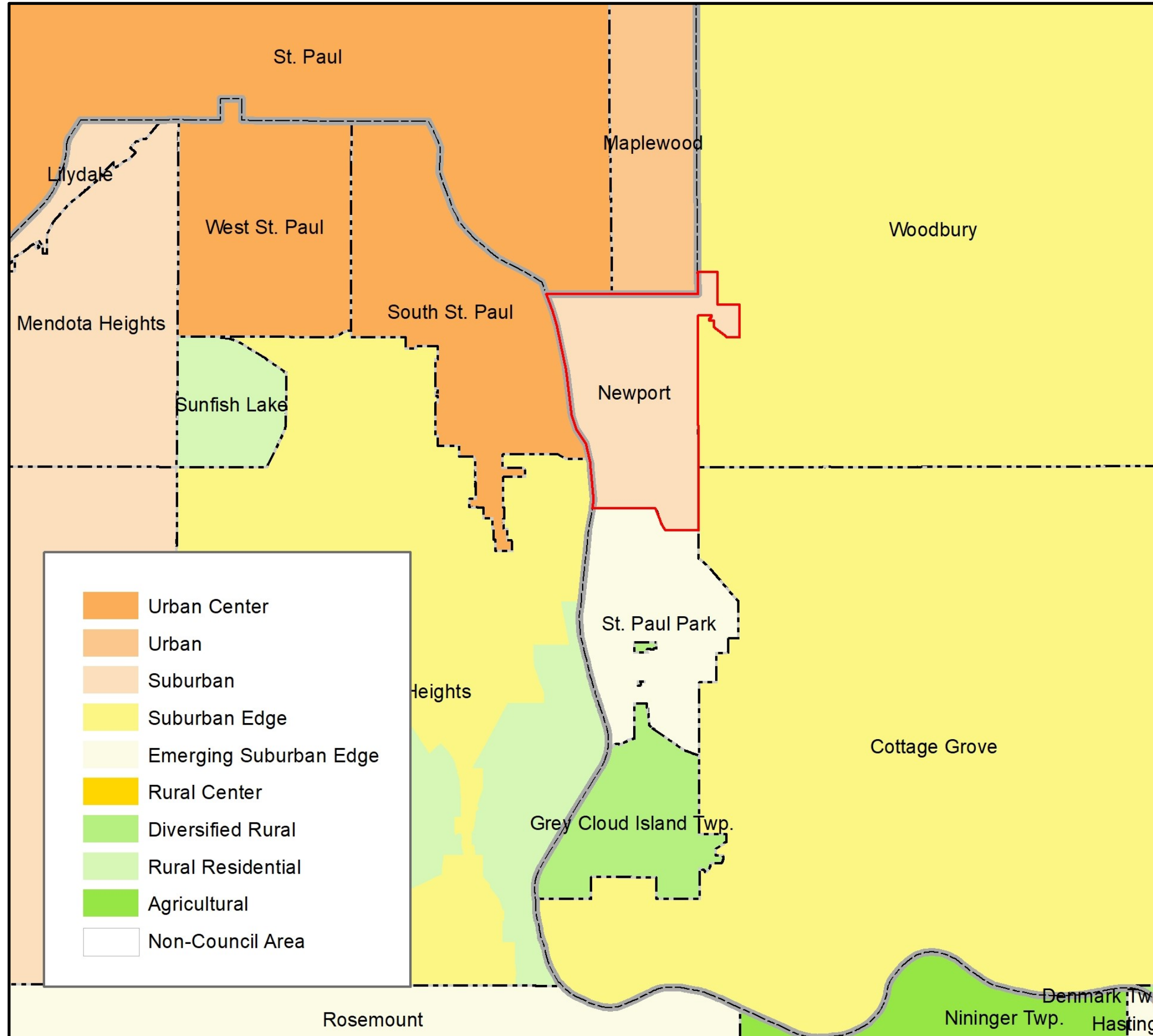
Environment Committee: March 26, 2019



Newport Comprehensive Plan Update

- 3/26/19 – Environment Committee (Sewer Plan)
 - Request Council to formally “Approve” 2040 Sewer Plan
- 4/1/19 – Community Development Committee (Comprehensive Plan Update)
 - Request Council to advise City to Implement 2040 Plan
- 4/10/19 – Metropolitan Council (Final Actions)
 - Formal “Approval” of 2040 Sewer Plan
 - Advise City to Implement 2040 Comprehensive Plan

Community Planning Designation



System Statement

- Urban

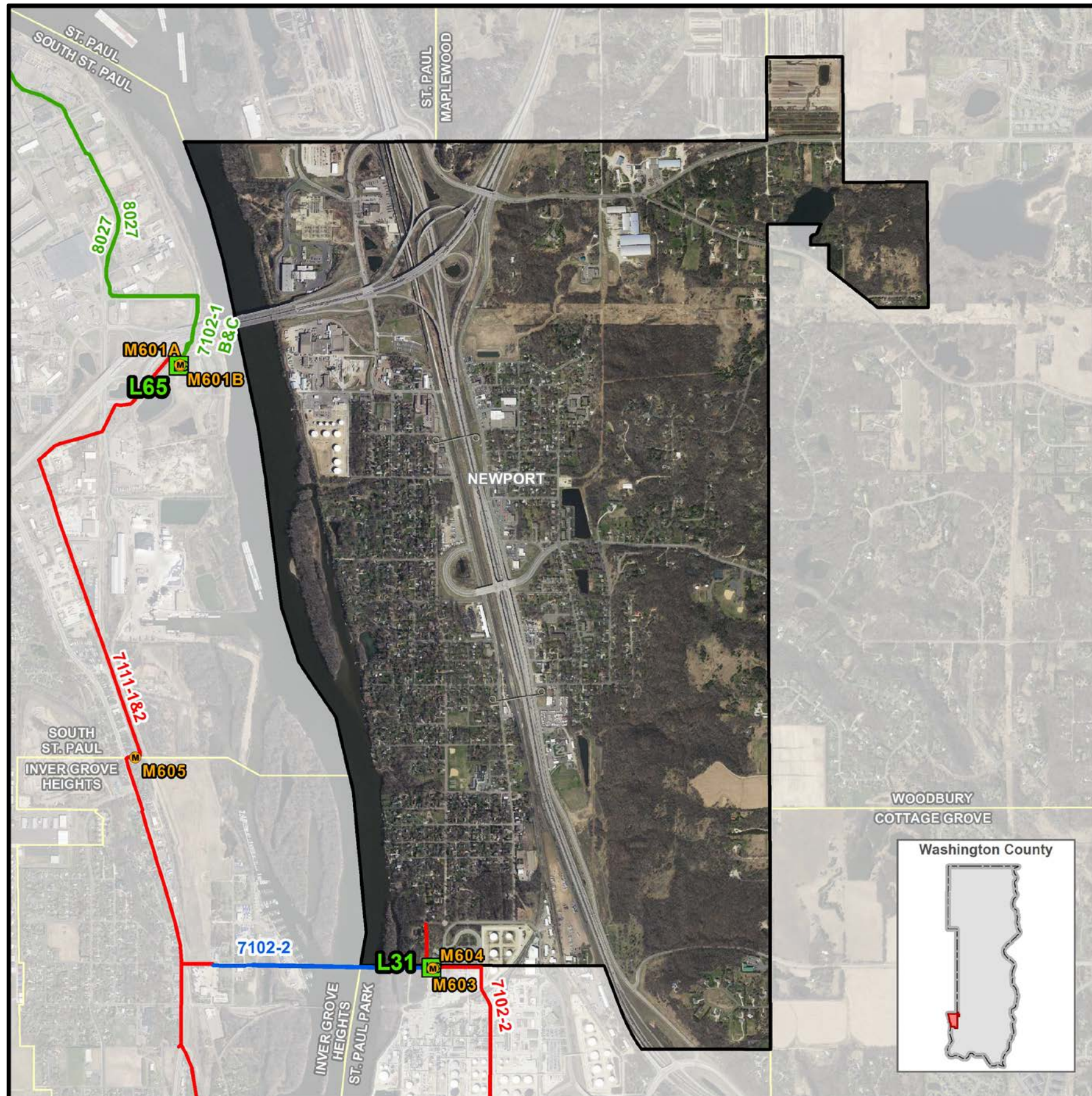
Overall Residential Density
Minimum: 10 units/Acre

Proposed

- Suburban

Overall Residential Density
Minimum: 5 units/Acre

Location



- Washington County
- Metropolitan Council District 13

Wastewater Service Statistics

Year	Households	Employment
2010	1,049	1,605
2040	<u>1,790</u>	<u>2,100</u>
+/-	+741	+495

Minimum sewer Residential Density: 6.3 Units per acre

SSTS': 78

Assigned Inflow & Infiltration (I/I) Work Plans by Council

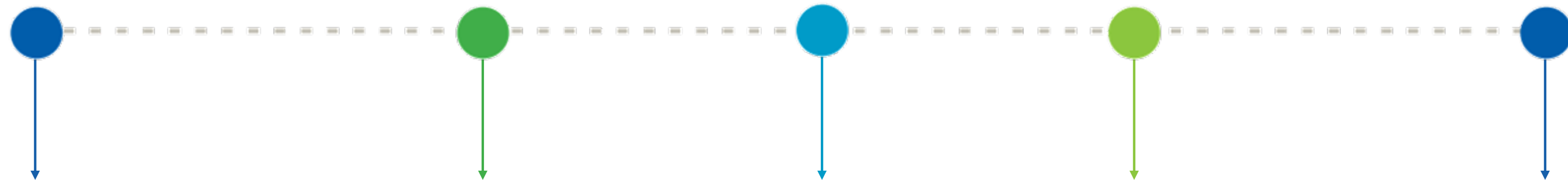
Inflow and Infiltration Mitigation Efforts

- Newport has been identified as a contributor of excess I/I.
- Completed over \$460,000 in I/I work plan assignments since 2011.
- Applied for and will receive \$283,288 in State Bond I/I Grants thru 2019.
- Additional funding would assist City in additional I/I mitigation efforts
- Plan includes defined goals, policies, and strategies for I/I reduction in both the public and private property portions of the local system.
- Includes an ordinance that prohibits the connection of foundation drains, sump pumps and rain leaders to the sanitary sewer system.

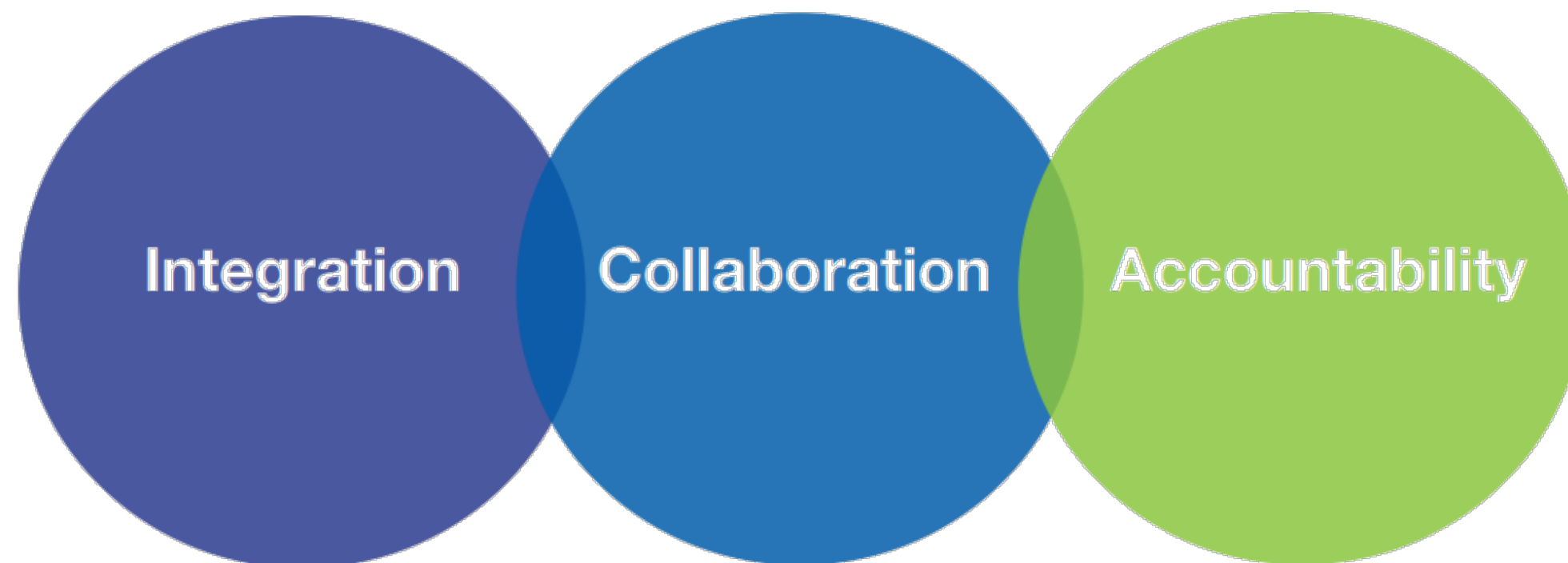
Thrive-Driven Outcomes & Principles

THRIVE-DRIVEN OUTCOMES THAT DEFINE OUR SHARED REGIONAL VISION:

Stewardship Prosperity Equity Livability Sustainability



PRINCIPLES TO CARRY OUT THE COUNCIL'S WORK:



Comprehensive Sewer Plan Findings

- Conforms with the Regional Wastewater System Plan
- Consistent with Council adopted policies
- Compatible with adjacent and affected governmental units
- Satisfies all the required plan elements
- Regional Wastewater System with its scheduled improvements has sufficient capacity to serve the City's projected growth as stated in the Plan

Advisories

- Plan becomes effective after City adopts the 2040 Plan in its final form, and
- City needs to submit to the Council a copy of the resolution adopting the Plan

Proposed Action *(Environment Committee)*

- That the Metropolitan Council adopt the Advisory Comments and Review Record and approve the proposed recommendations of the Environment Committee as written in the business item which includes:
 - Approve the City of Newport's Comprehensive Sewer Plan component of the City's 2040 Comprehensive Plan.

Questions