

Metropolitan Council Environmental Services Overview



Presentation to Environment Committee
March 26, 2019



Topics



About MCES



Planning



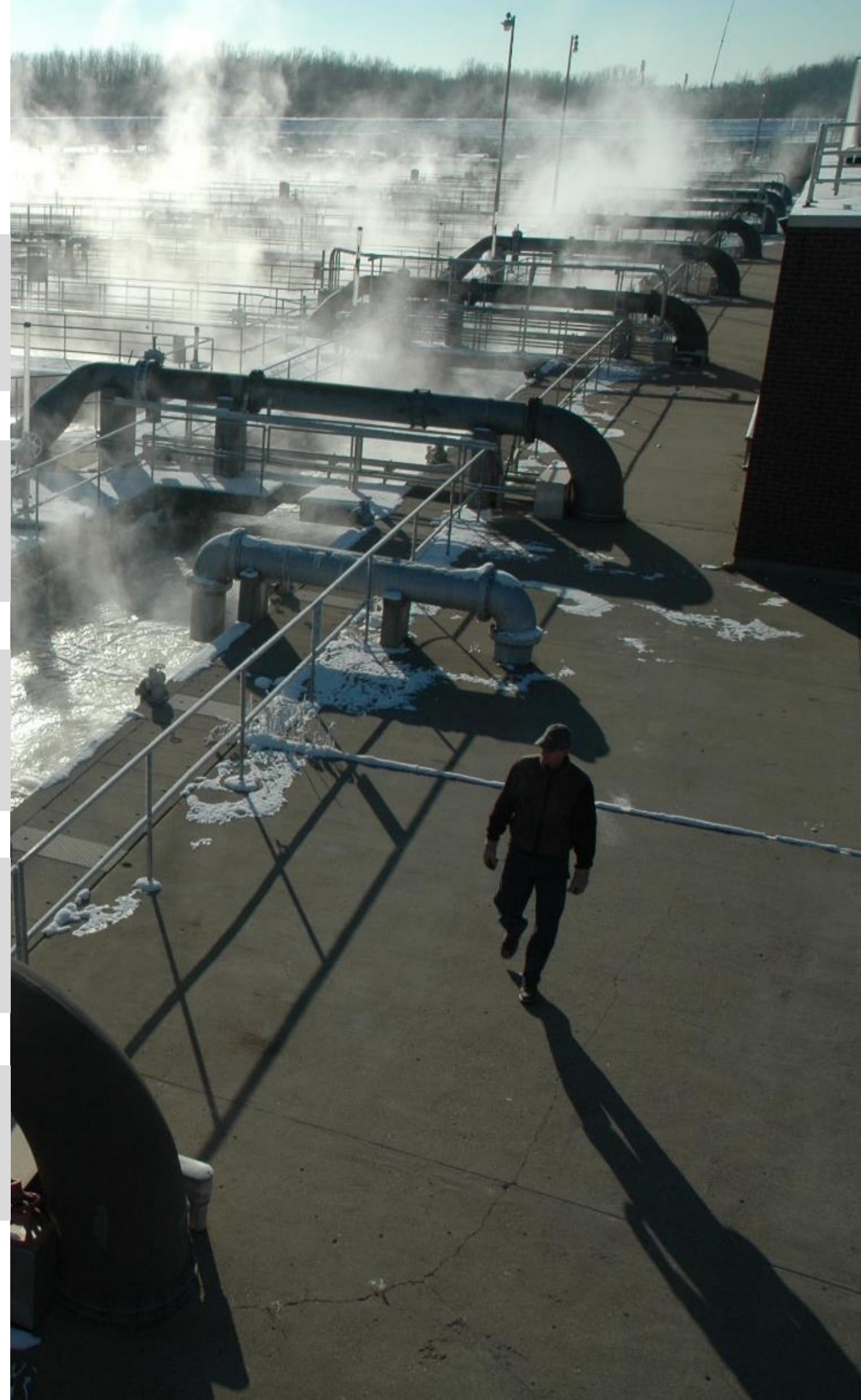
Our System



Finance



Capital Program

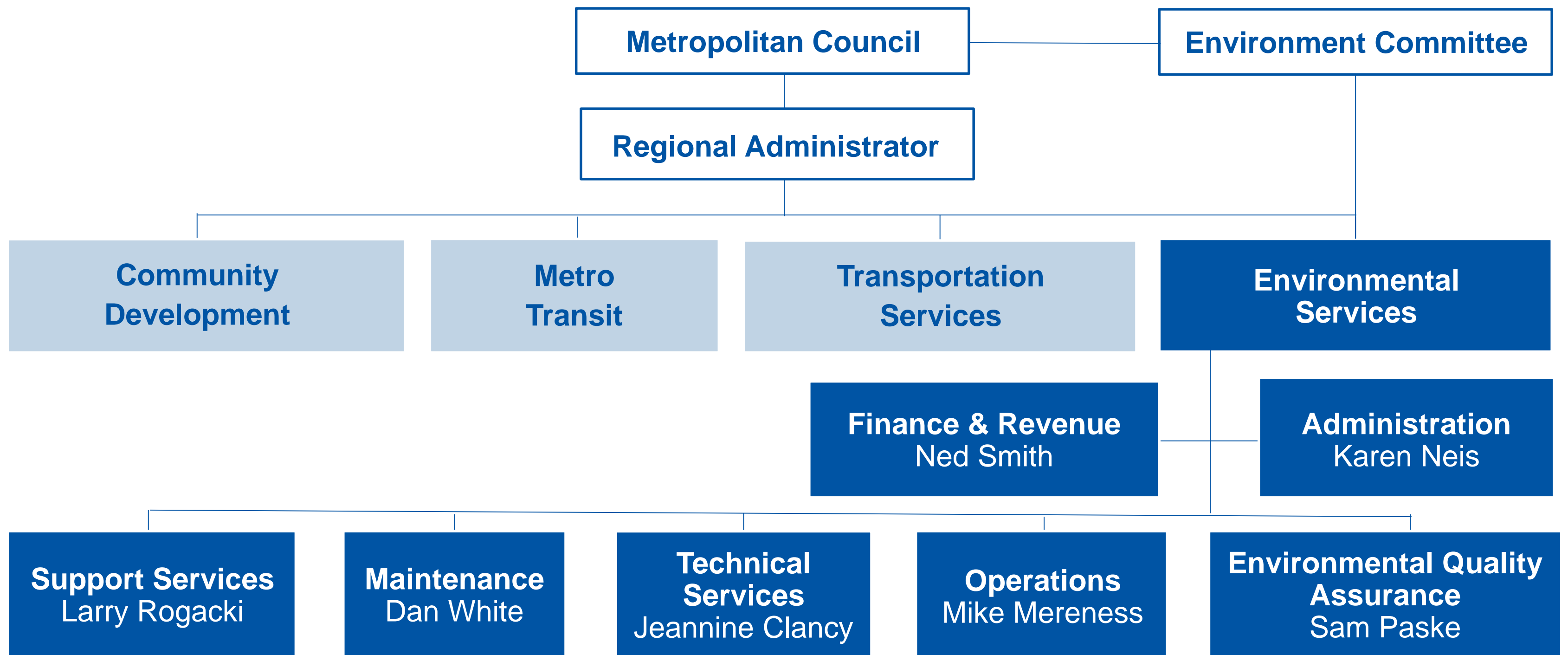


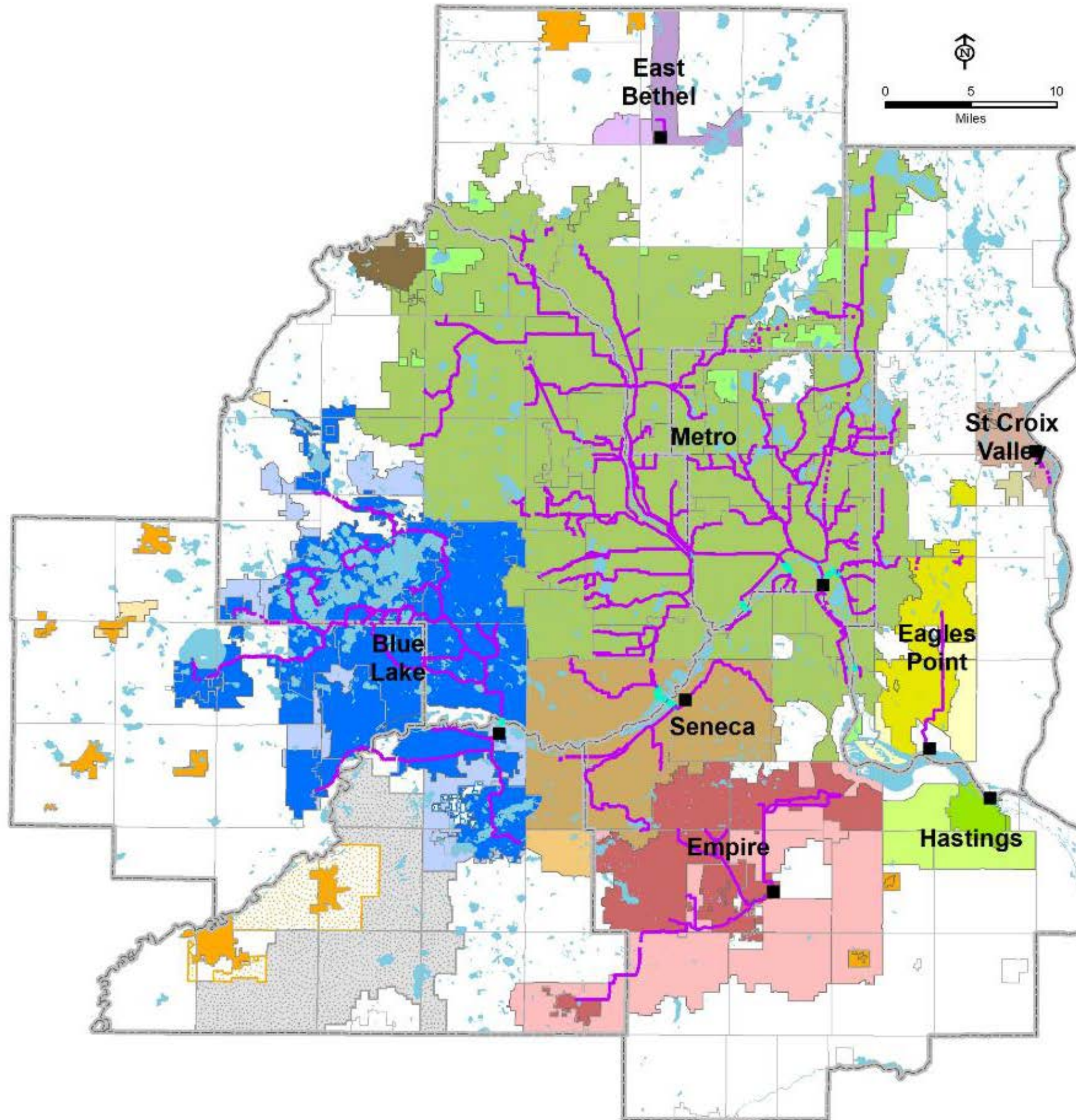
Metropolitan Council Environmental Services



Mission: *Provide wastewater services and integrated planning to ensure sustainable water quality and water supply for the region*

Vision: *Be a valued leader and partner in water sustainability*





Protects
public health
and safety



Protects the
environment



Fosters the
economic growth
of the region

WHO WE SERVE

7-county Twin Cities Metro Area
109 communities
2,700,000+ people

OUR FACILITIES

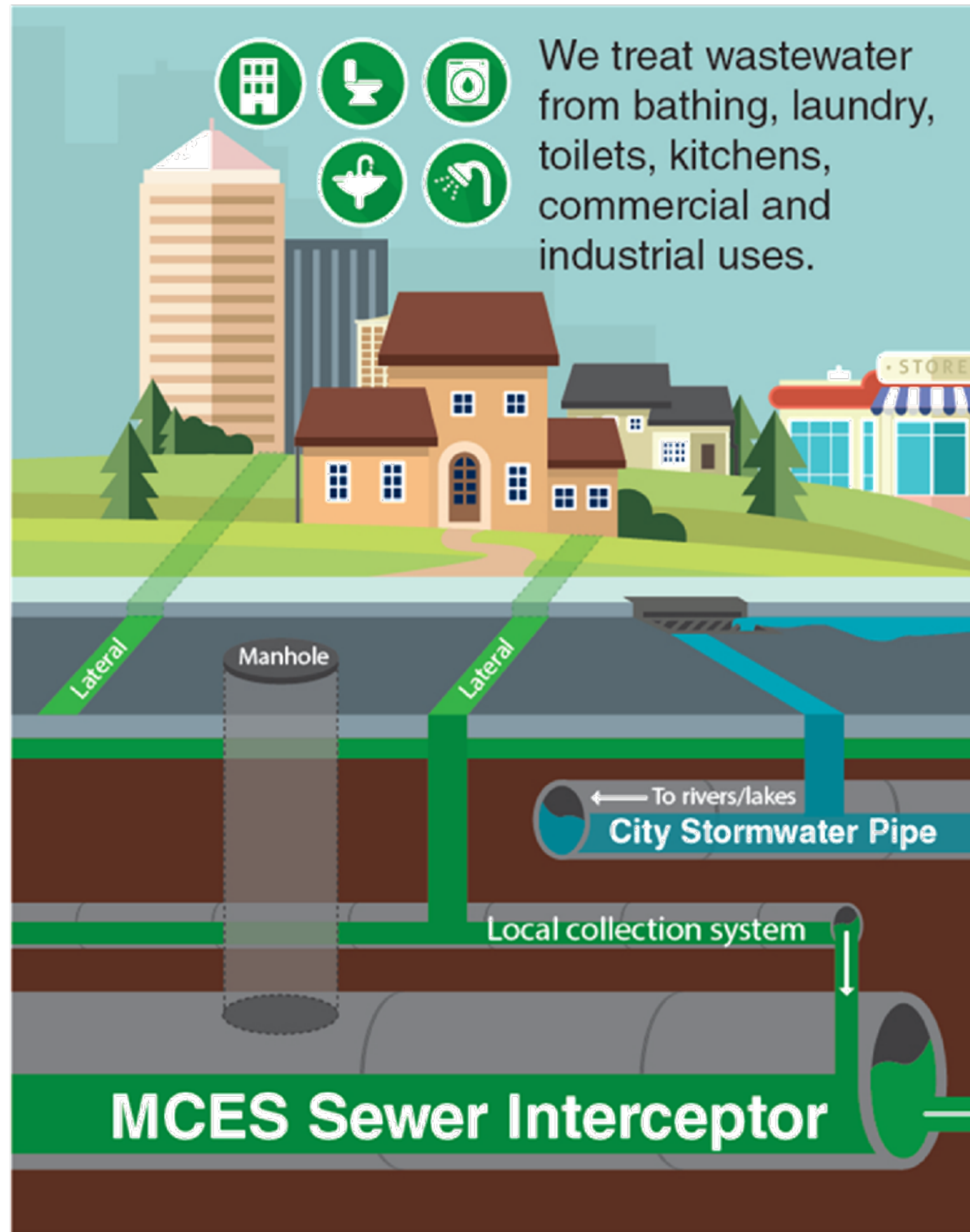
8 wastewater treatment plants
610 miles of interceptors
250 million gallons per day (avg)

OUR ORGANIZATION

600+ employees
\$7 billion in valued assets
\$150 million / yr capital program

MCES Serves ~50% of the State's Population

MCES Wastewater System



Our treatment process removes pollutants by converting them to small volume of organic solids, and returns clean water to the environment.

To wastewater treatment plants



Communities Served are Customers & Partners



Planning

Systems and Policy Plans

- Plan for each Regional System
 - Transportation
 - Water Resources Management
 - Parks
- System Planning
 - Specific policies, goals, strategies
 - Details on system improvements, extension, limitations
- Policy Plan for Housing
 - First plan since 1980s to specifically address housing in the region



2040 Water Resources Policy Plan



Wastewater



Surface Water



Water Supply

Planning



THRIVE and WATER RESOURCES POLICY PLAN



Water Resources & Wastewater Policies

Regional Wastewater System Plan



OBJECTIVES

WASTEWATER SERVICE

Implement wastewater policies and long-term system plan



- Orderly, economic growth
- Sustainable operations
- I/I mitigation
- Water reclamation
- Regional service fees

CUSTOMER SERVICE

Meet customer level of service



- Financial stewardship
- Public health & safety
- Environmental protection
- Customer service

STRATEGIC PLAN

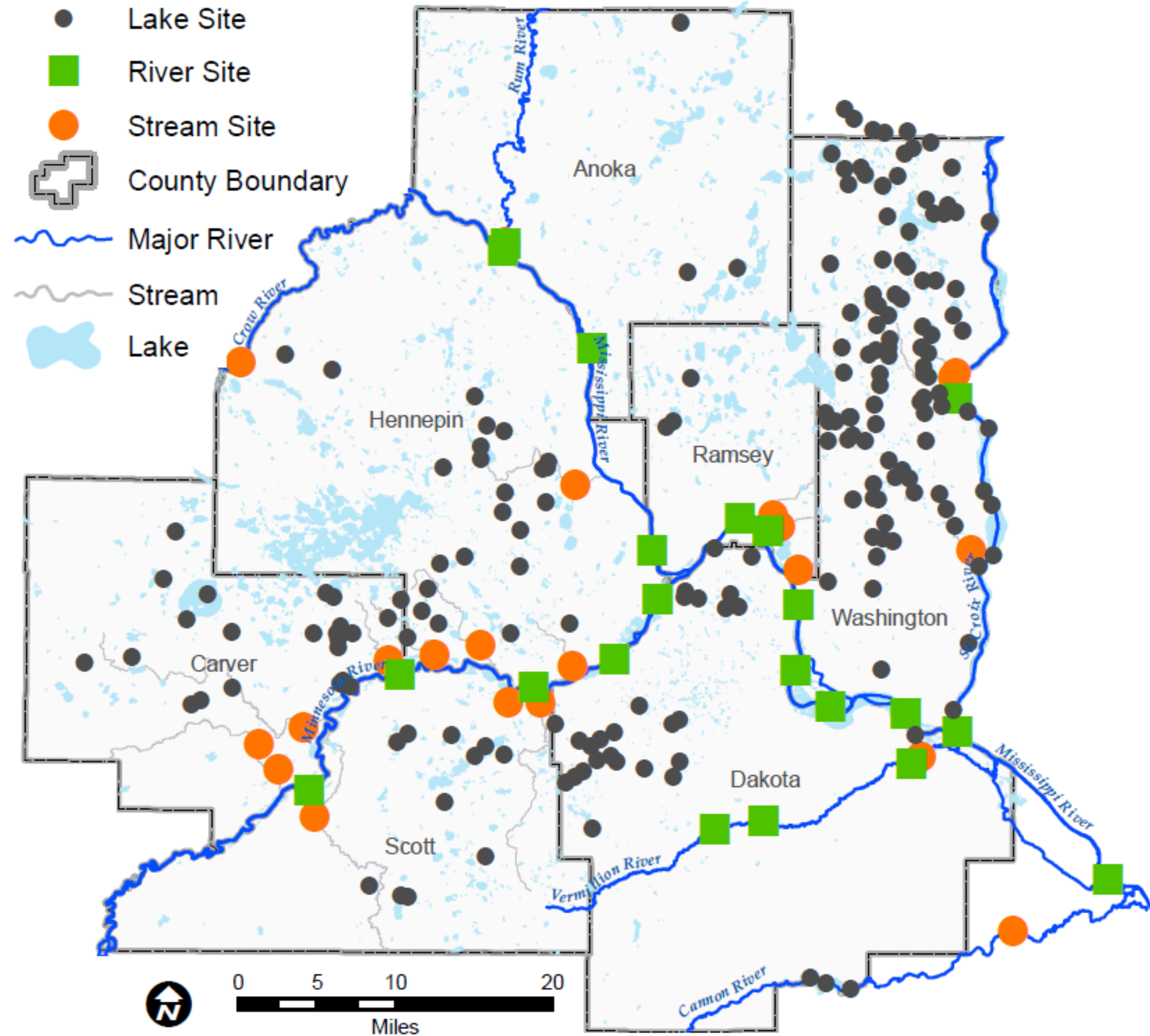
Support strategic plan



- Sustainable communities
- Sustainable service
- Sustainable infrastructure



MCES 2017 Surface Water Monitoring

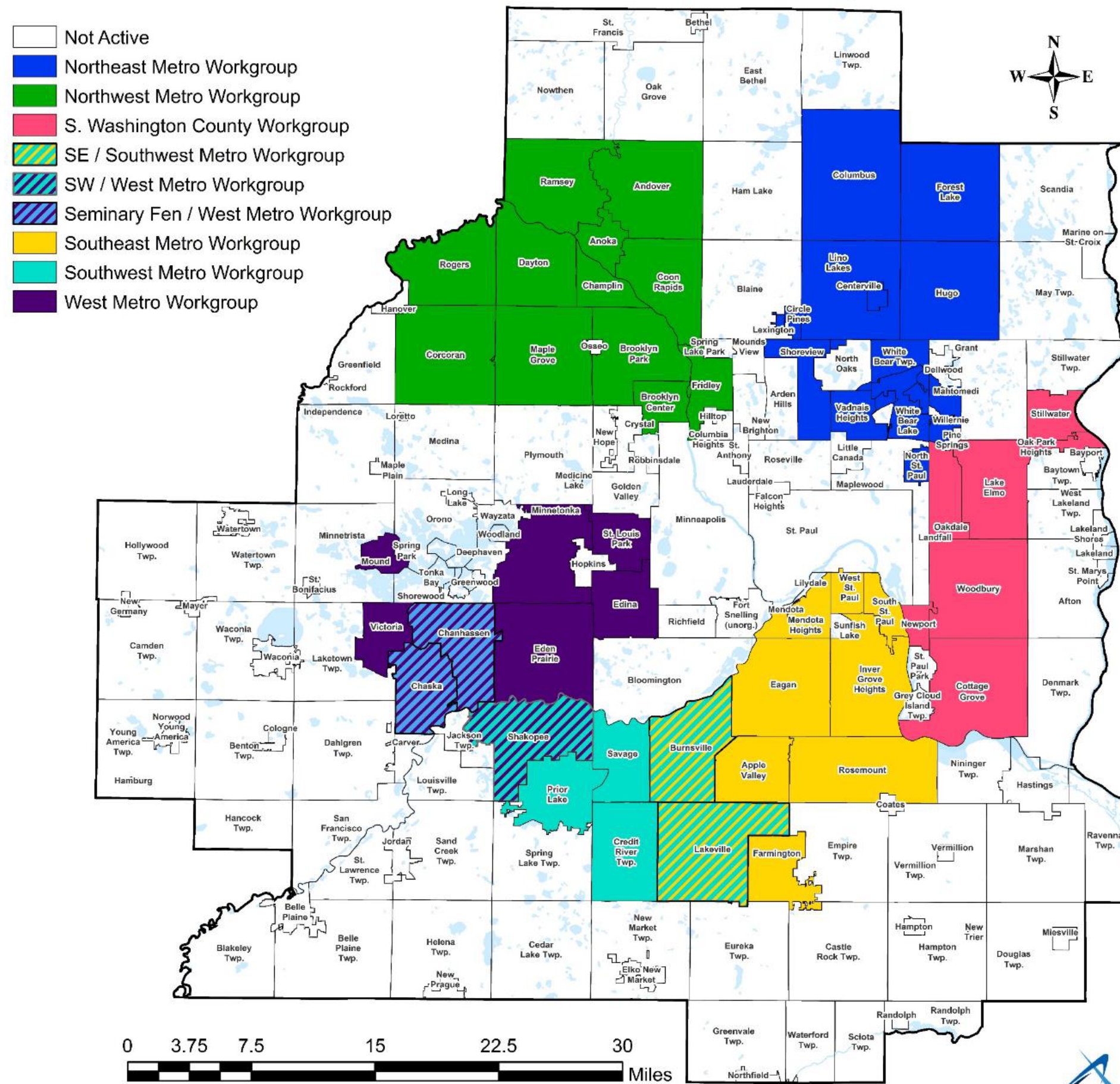


Data is used to analyze impact of wastewater treatment and stormwater management practices.

Water Supply Sub-Regional Workgroups



Communities in Metro Area Water Supply Work Groups



Effective platform for collaboration.

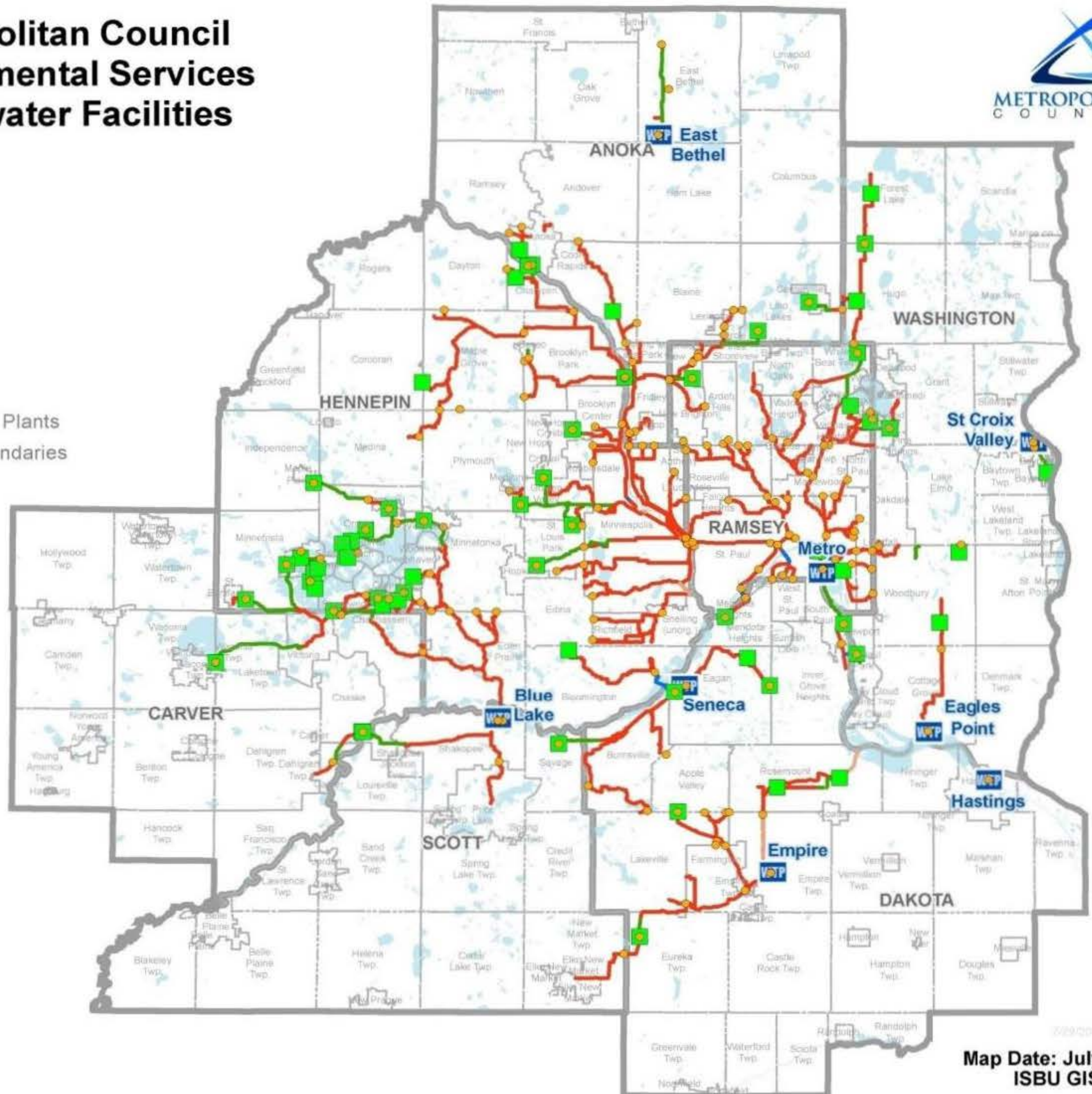


Our System

Metropolitan Council Environmental Services Wastewater Facilities



- Interceptor Facilities**
 — Gravity Interceptors
 — Force mains
 — Siphons
 — Outfalls
 ● Meters
 ■ Lift Stations
 [WTP] Wastewater Treatment Plants
 [---] City and Township Boundaries
 [---] County Boundaries
 [---] Lakes and Rivers



Hopkins Lift Station



East Bethel Plant



**Capacity = 0.5
Million Gallons
Per Day**

**Average Daily
Flow = 0.05
Million Gallons
Per Day**

St. Croix Plant

Capacity = 5.8
Million Gallons
Per Day

Average Daily
Flow = 3.1
Million Gallons
Per Day



Eagles Point Plant

Capacity = 11.9
Million Gallons
Per Day

Average Daily
Flow = 4.8
Million Gallons
Per Day



Hastings Plant

Capacity = 2.7
Million Gallons
Per Day

Average Daily
Flow = 1.4
Million Gallons
Per Day



Empire Plant

**Capacity = 28.6
Million Gallons
Per Day**

**Average Daily
Flow = 10.7
Million Gallons
Per Day**



Seneca Plant



**Capacity - 38
Million Gallons
Per Day**

**Average Daily
Flow = 21.5
Million Gallons
Per Day**

Blue Lake Plant

**Capacity = 32
Million Gallons
Per Day**

**Average Daily
Flow = 26.1
Million Gallons
Per Day**



Metropolitan Plant

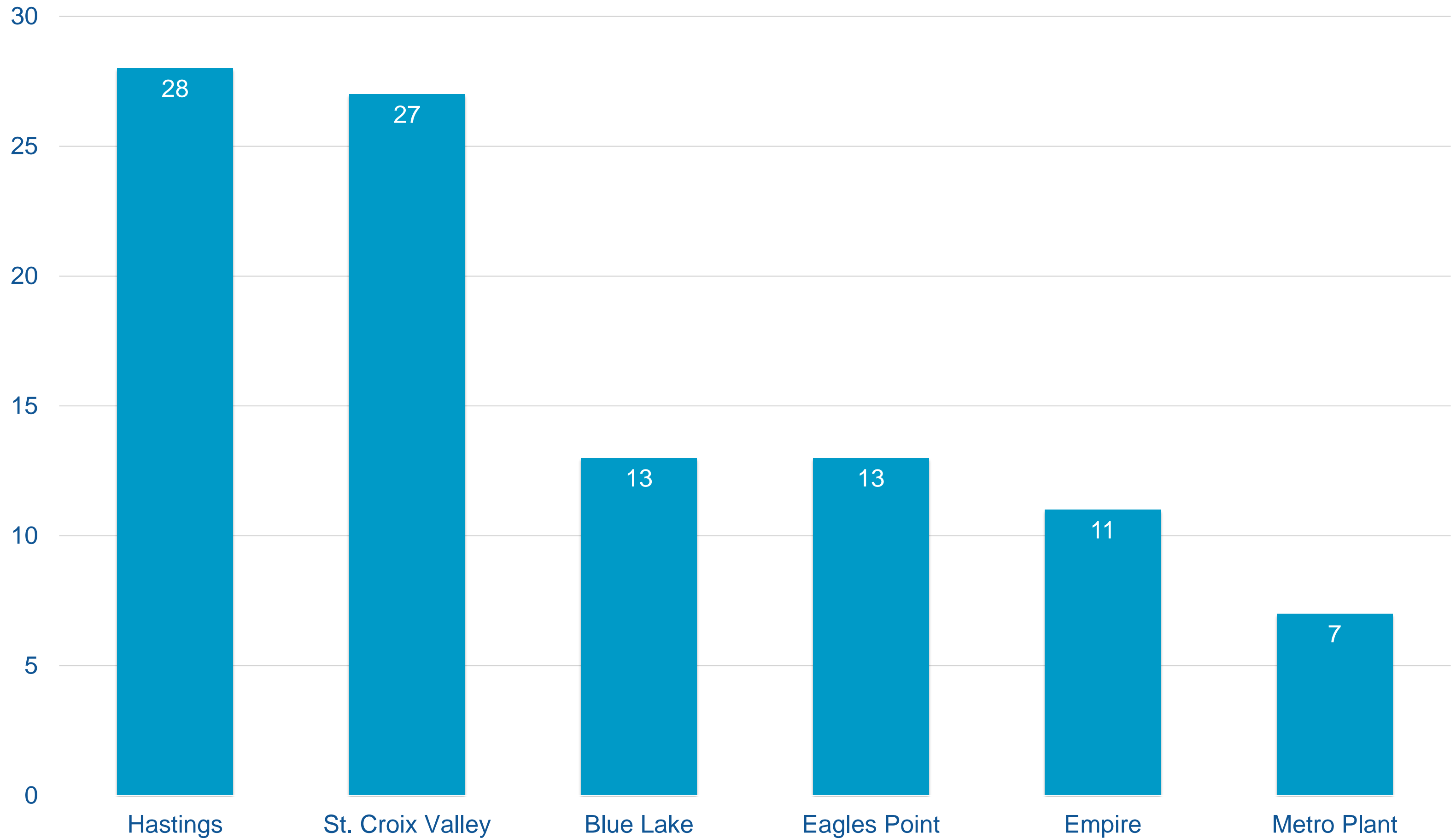


**Capacity = 251
Million Gallons
Per Day**

**Average Daily
Flow = 173
Million Gallons
Per Day**

Compliance Performance

NACWA Platinum Level Compliance







Financing the Regional Wastewater System

Funding the Regional Wastewater Treatment System



473.517: ALLOCATION OF COSTS

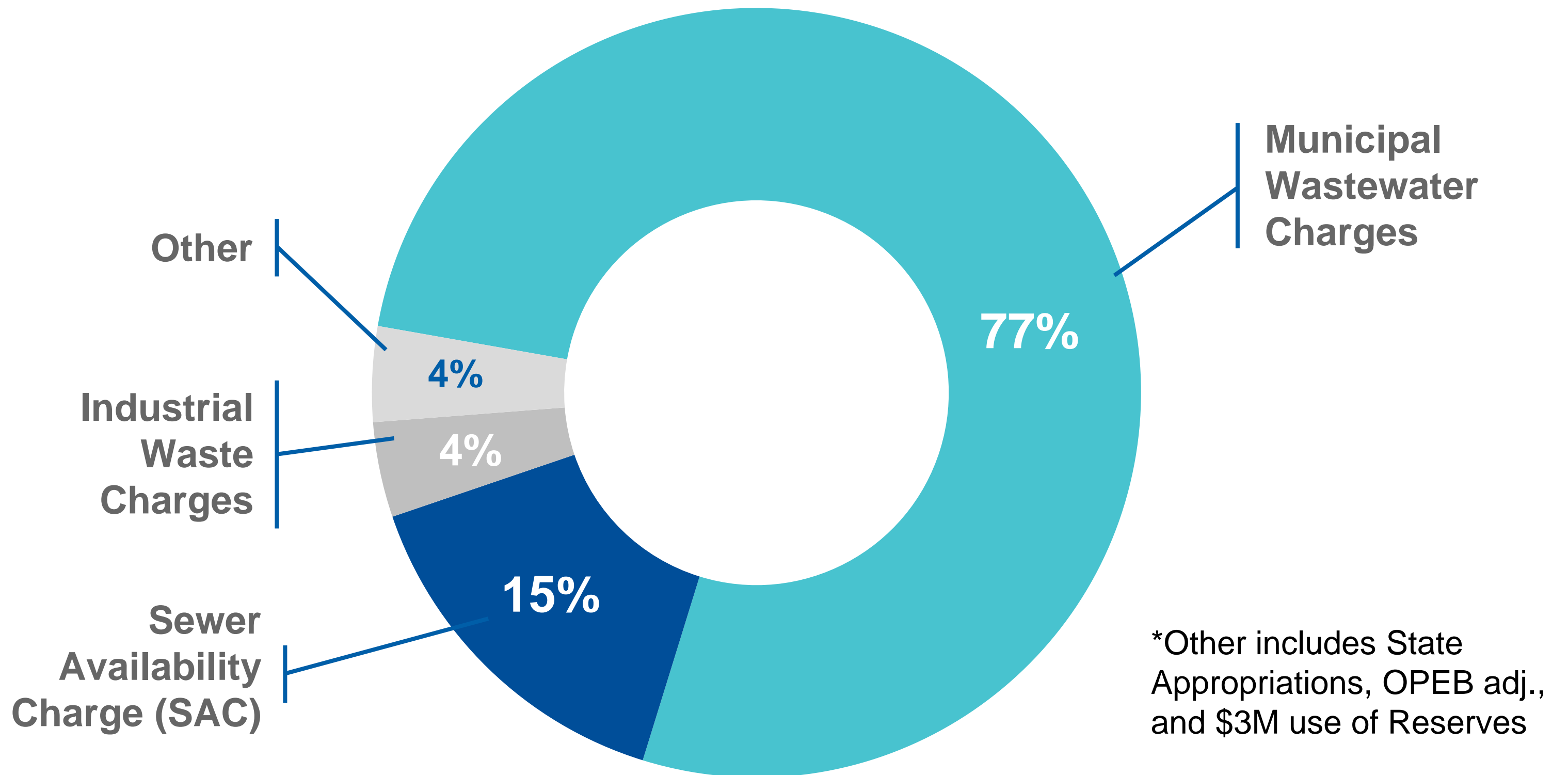
Council has full authority to establish fees for regional wastewater services:

- **Municipal Wastewater Charge**
- **Sewer Availability Charge**
- **Industrial Charge**

MCES Revenue Sources

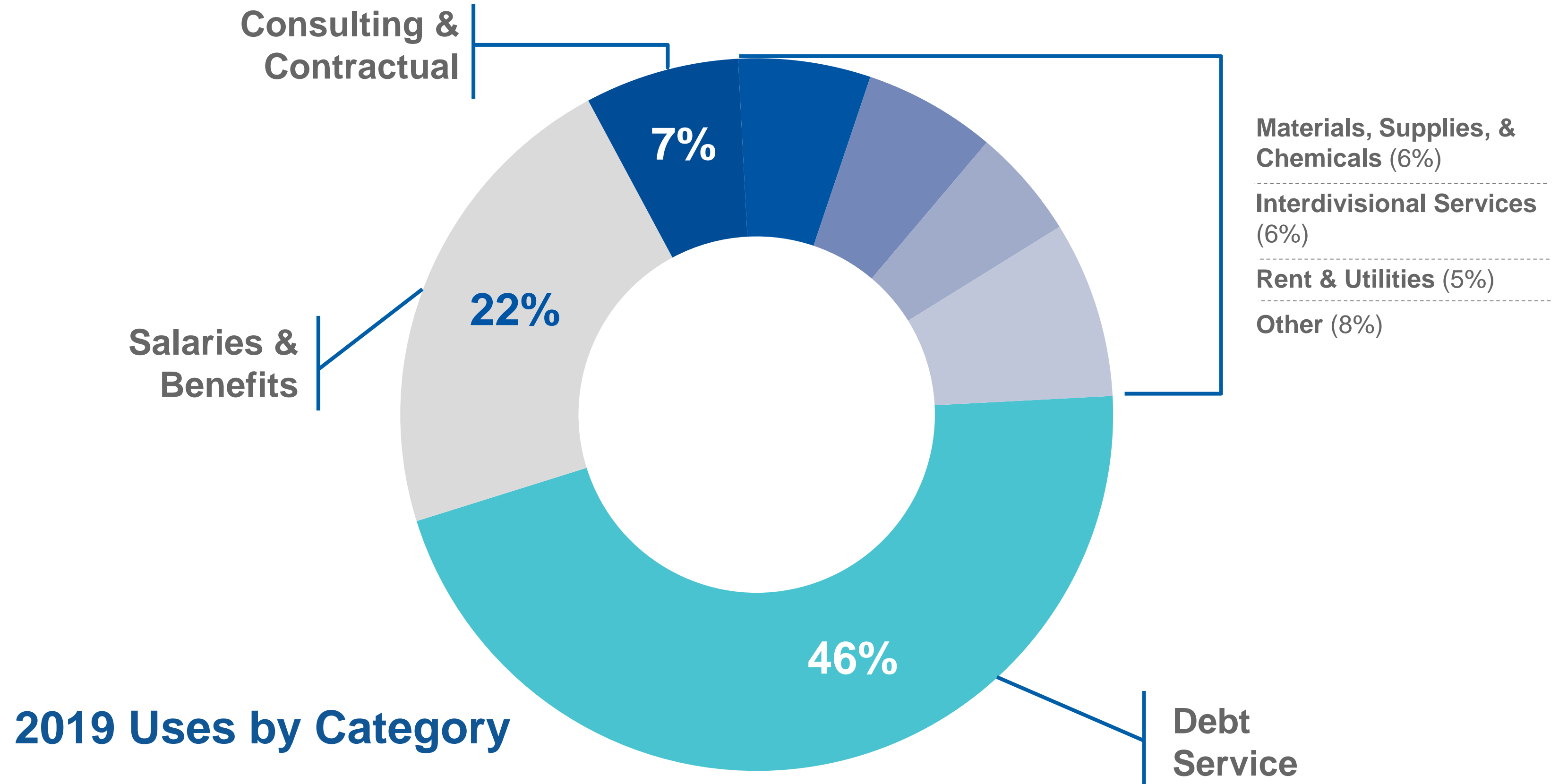


Proposed 2019 Revenue Sources - \$300M



Majority of revenue is fee for service.

MCES Expenditures

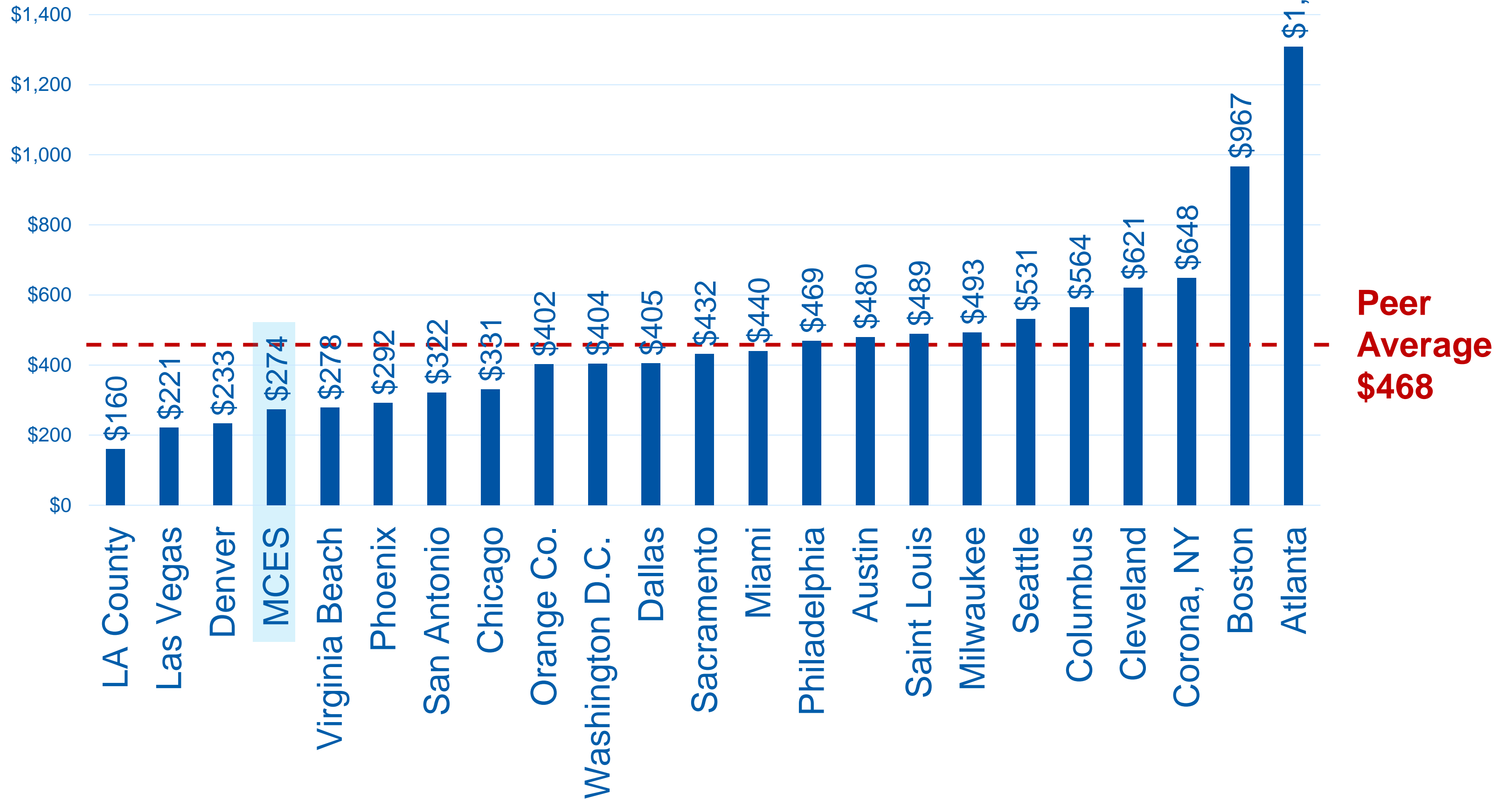


Community & industry fees are dedicated for the operations and maintenance of the regional wastewater system.

Keeping Sewer Rates Affordable



2016 Retail Sewer Rate Per Household



Twin Cities community sewer rates are ~ 40% less than the national peer average



MCES Capital Program

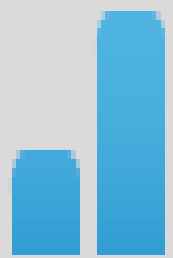


Objectives



Preserve Assets

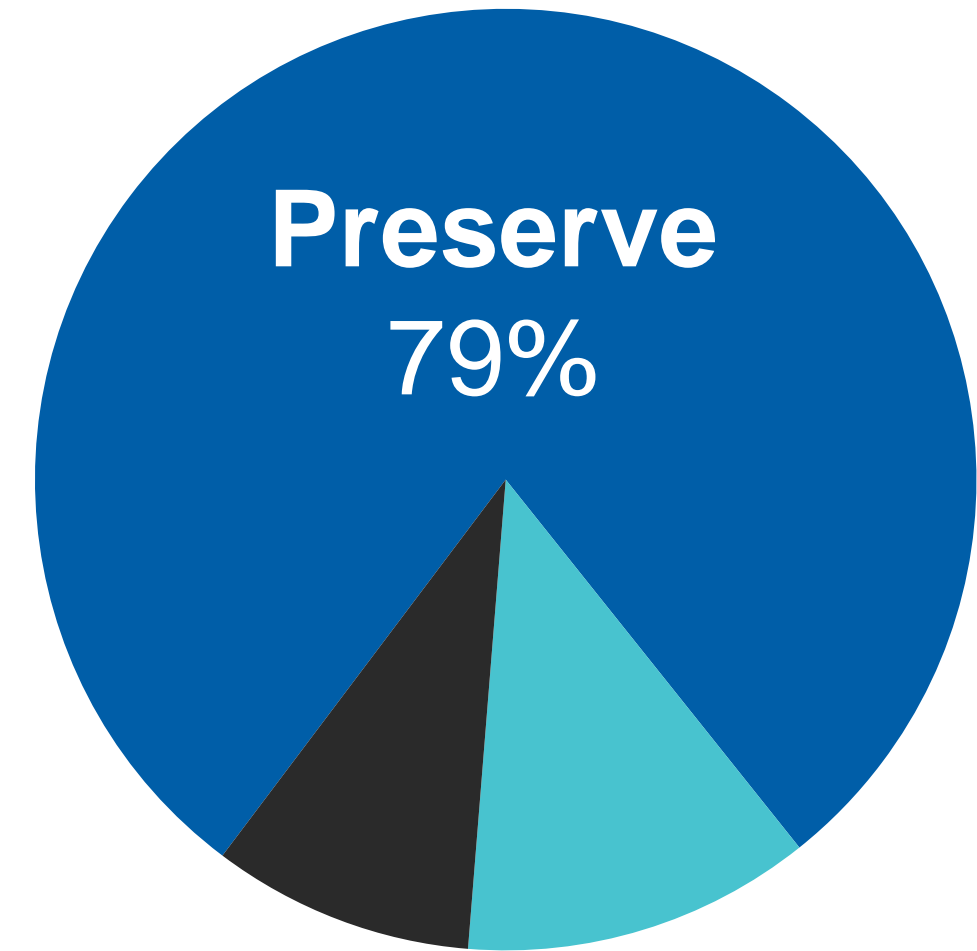
\$7 Billion Infrastructure



Serve Growth



Improve Quality



Improve
9%

Expand
12%

Total
2019 – 2024
\$1.34 Billion

79% of CIP is spent on asset preservation.



Business Process Improvement

- Increase staff efficiency
- Increase staff effectiveness



Infrastructure Coordination

- Coordinate interceptor projects with other planned infrastructure projects by governmental units



Environmental Sustainability

- Energy conservation/recovery
- Wastewater reuse
- Water conservation
- Resource recovery



Customer Service

- Service extension
- Metering (cost allocation)
- Odor control



Performance Assessment

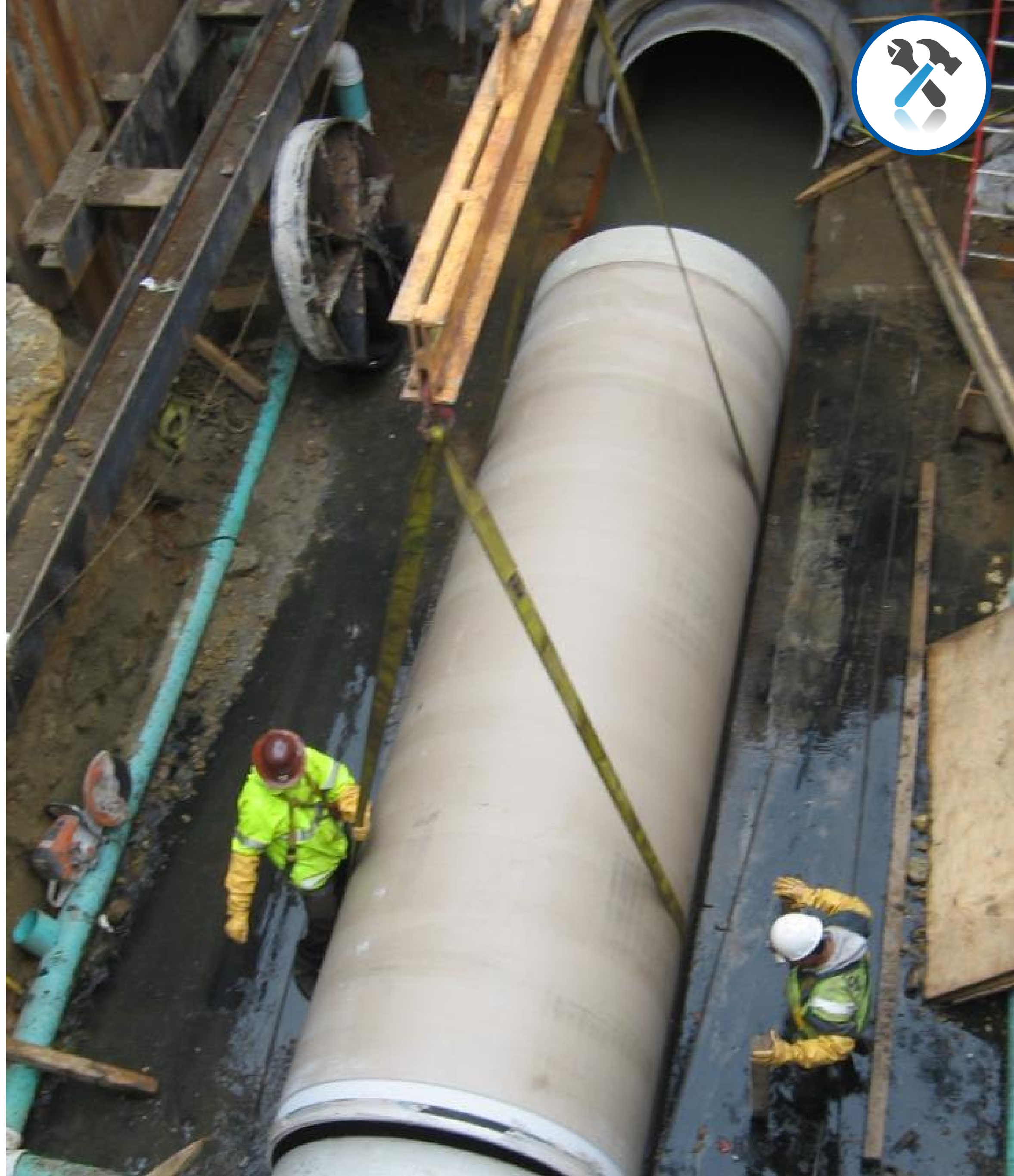
- Safety
- Reliability
- Capacity
- Efficiency
- Quality



Condition Assessment

- Physical condition
- Equipment obsolescence

Capital Program









Capital Program



Questions