

Information Item: Industrial Waste and Pollution Prevention (IWPP) Overview

Bob Nordquist, Industrial Waste & Pollution Prevention Manager

Environment Committee: October 8, 2019



Clean Water Regulation

- Clean Water Act / 40 Code of Federal Register (CFR) Part 403
 - Categorical Standards
 - General Pretreatment Regulations
- Environmental Protection Agency (EPA) Region 5
 - Delegated to Minnesota Pollution Control Agency (MPCA)
 - Approval of Local Pretreatment Programs
- MCES Approved Pretreatment Program
 - Waste Discharge Rules
 - Local Limits

Industrial Waste Section Purpose

- Administer EPA Approved Pretreatment Program
- Protect 9 Wastewater Treatment Plants & Interceptor System
- Protect 4 Major Rivers
- Protect the Health and Safety of:
 - MCES Plant Operators and Interceptor Workers
 - City Collection System Workers
 - General Public
- Support the MCES Mission, Vision and Values
- Provide a Level Playing Field

IWPP Customers/Stakeholders

- Twin Cities Region of 2.6 Million People
- 894 Total Active Permits
 - 178,964 Employees at Permitted Companies
 - 226 Significant Industrial Users (SIUs)
 - 200 General Industrial Permits
 - 94 Liquid Waste Haulers
 - 96 Groundwater and Leachate Discharge Permits
- 110 Communities Connected to our System
- 88% Approval Rating among Customers

Standard Discharge Permits

- 3-Year Duration
- Yearly Permit Fees \$1,025 - \$10,000
- Annual, Semi-Annual or Quarterly Sampling & Reporting
- Significant Industrial Users (SIUs)
 - Over 25,000 gallons/day of Industrial Discharge
 - Subject to EPA Categorical Standards

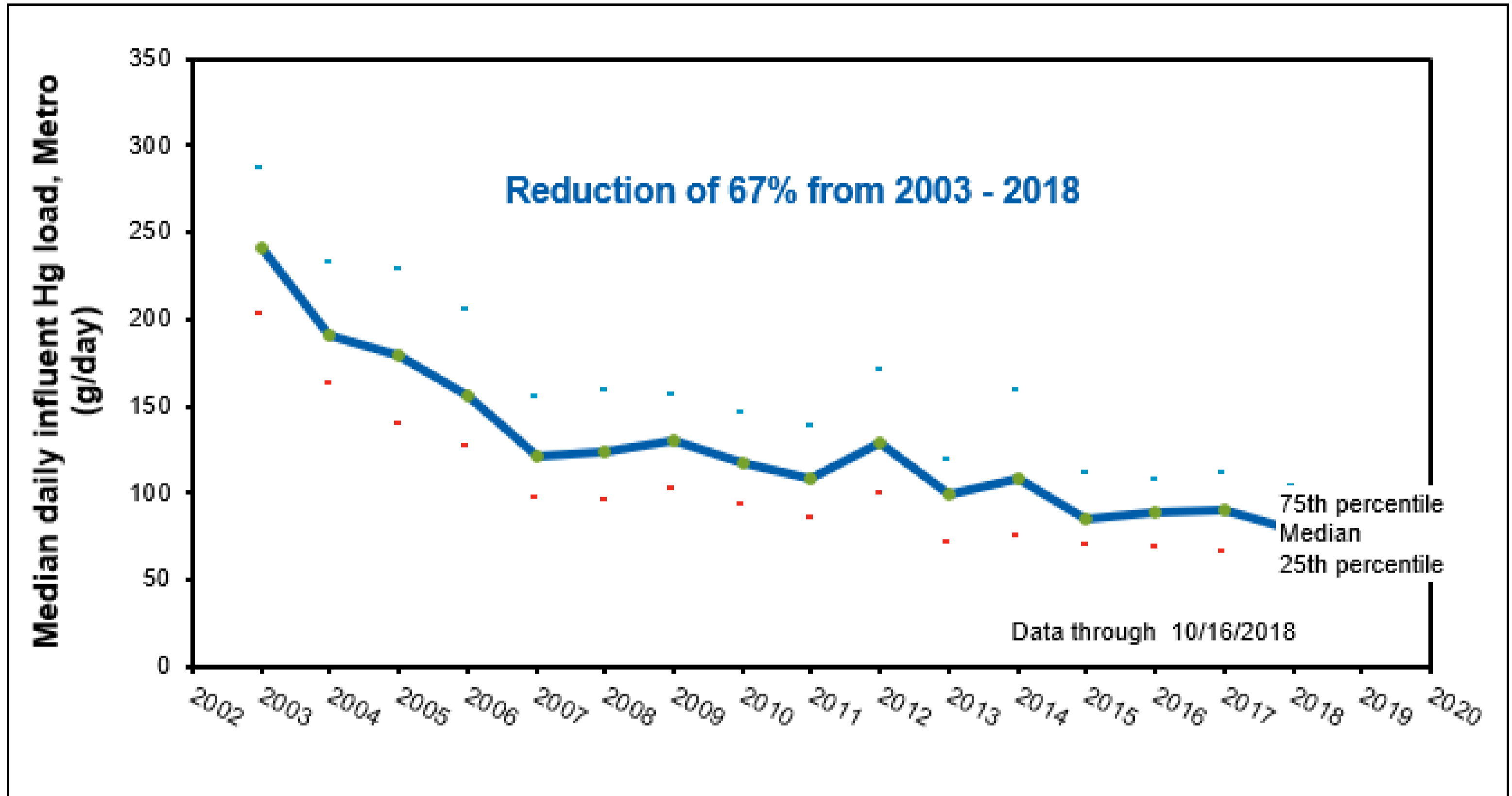
Monitoring and Spill Response

- SIU Annual Sampling (3-days)
- Non-SIU Sampling (once per permit)
- Enforcement Sampling
- Collection System Sampling
- Special Treatment Plant Sampling
- Spill Response
- Liquid Waste Receiving Facilities

General Discharge Permits

- Industry Group with Similar Discharge
 - Microbreweries
 - Hospitals
 - Zero Discharge Categorical
 - Water Treatment Plants
- Yearly Permit Fees \$425 - \$475
- No Sampling Required
- Annual Reporting
- Best Management Practices

Metropolitan Wastewater Treatment Plant Influent Mercury Loading



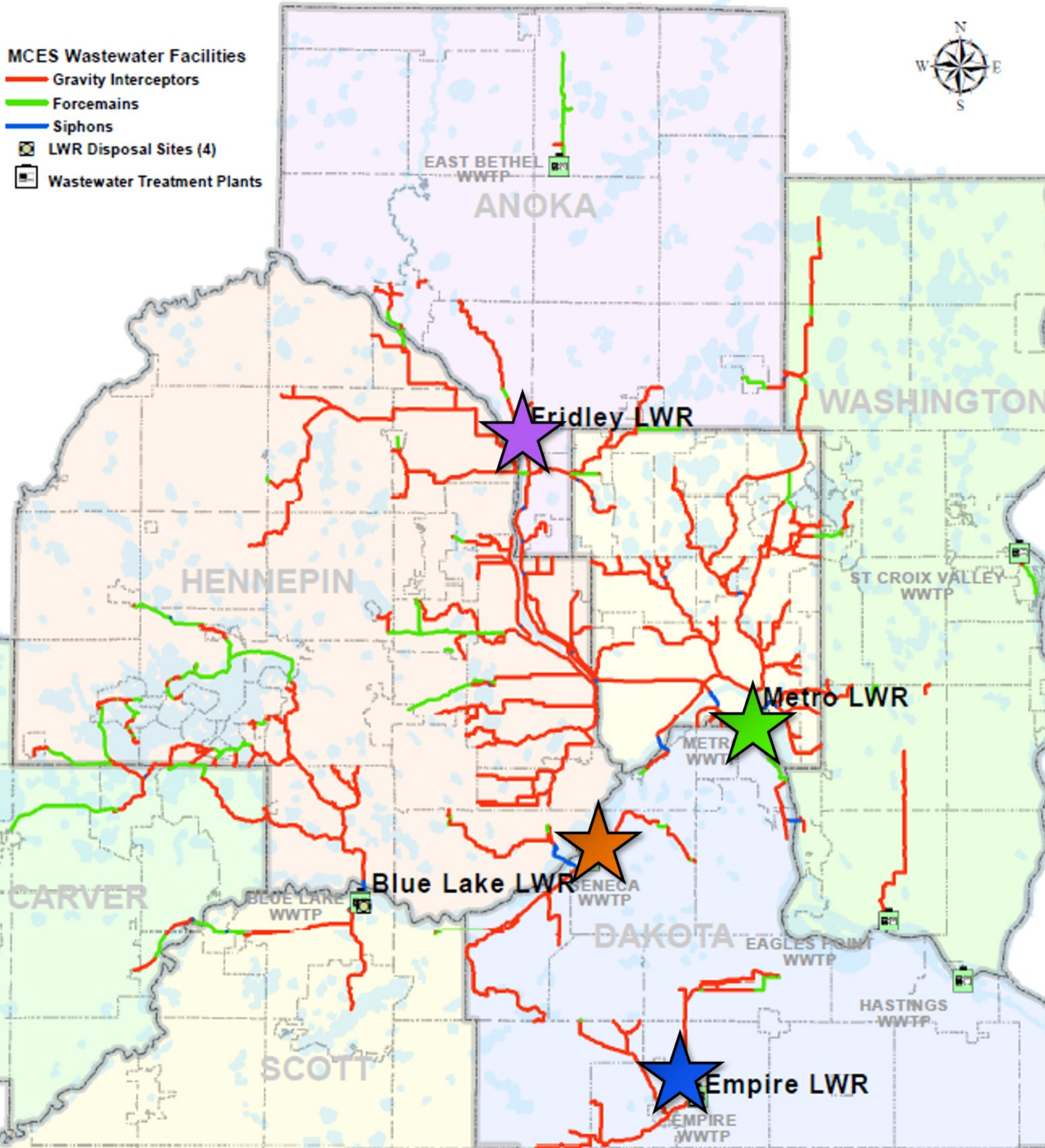
Enforcement Activities

- Work with Counties, MPCA, EPA Criminal Investigation Division
- Enforcement Response Plan
 - Compliance Issue Notification
 - Notice of Violation (NOV)
 - Compliance Schedule
 - Enforcement Meeting
 - Stipulation Agreement
 - Order to Appear
 - Termination of Permit

Revenue Determination / Collection

- Strength Charge
- Load Charge
- Out of Area Charge
- Permit Fees
- Sewer Availability Charge (SAC) / Industrial Capacity Charge (ICC)
- NOV Fees
- Stipulation Agreement Payments
- Cost Reimbursement

Liquid Waste Receiving (LWR) Facility Location Map



★ Fridley

★ Metro

★ Blue Lake

★ Empire

Current Initiatives

- Industrial Pretreatment Incentive Program (IPIP)
- Industrial SAC / ICC
- Microbrewery General Permits
- Industrial Online Reporting System (IORS)
- Rogers WWTP
- Chloride Acceptance
- Fats, Oil and Grease / Interceptor Damages
- Local Limits Study Due 9/30/2021

Questions

Bob Nordquist, Manager, Industrial Waste and Pollution
Prevention

651-602-4706

bob.nordquist@metc.state.mn.us