

Information Item:
**Water Resources Stream Monitoring
Program**

Casandra Champion, Principal Environmental Scientist

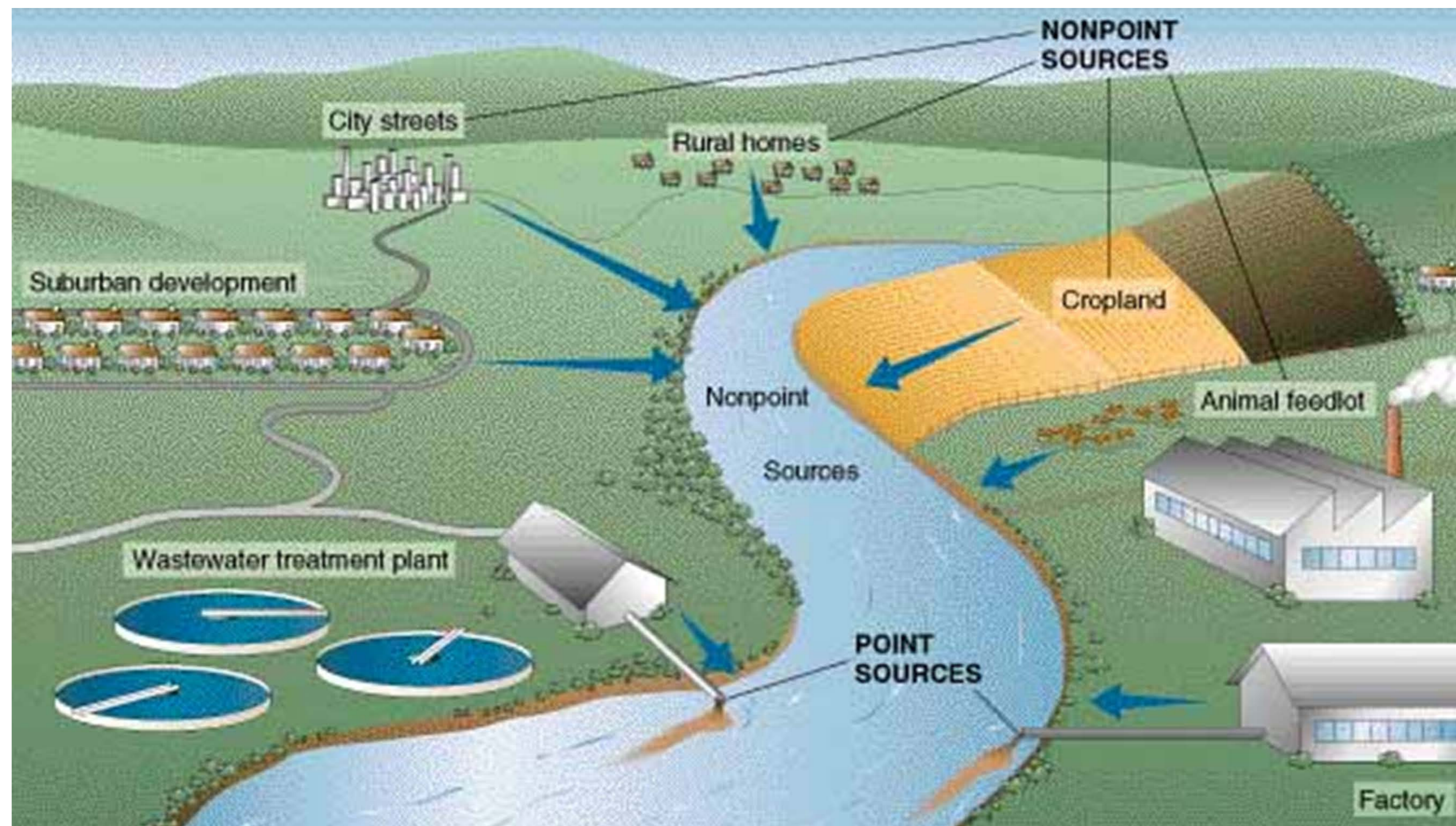
Environment Committee: September 24, 2019



Water Pollution

Point source

Nonpoint source



Purpose

Support regulatory strategies by quantifying regional nonpoint source pollution.

Measure regional stream health to provide actionable information to our partners for local water management.

Partner with local public-sector water resource practitioners to monitor and assess regionally significant streams.

History

- 1988 Stream monitoring begins in the Lower Minnesota Basin
- 1996-1991 Stream monitoring expands to Mississippi and St. Croix Basins
- 2019 Stream monitoring celebrates 30 years

Partners

Anoka CD

Browns Creek WD

Barr Engineering

Bassett Creek WMC

Carnelian Marine WD

City of Eden Prairie

Dakota County SWCD

Lower Minnesota River WD

Ramsey-Washington-Metro WD

Riley-Purgatory-Bluff Creek WD

Scott County SWCD

Valley Branch WD

Washington CD

Wenck Associates

Wright County SWCD

CD = Conservation District

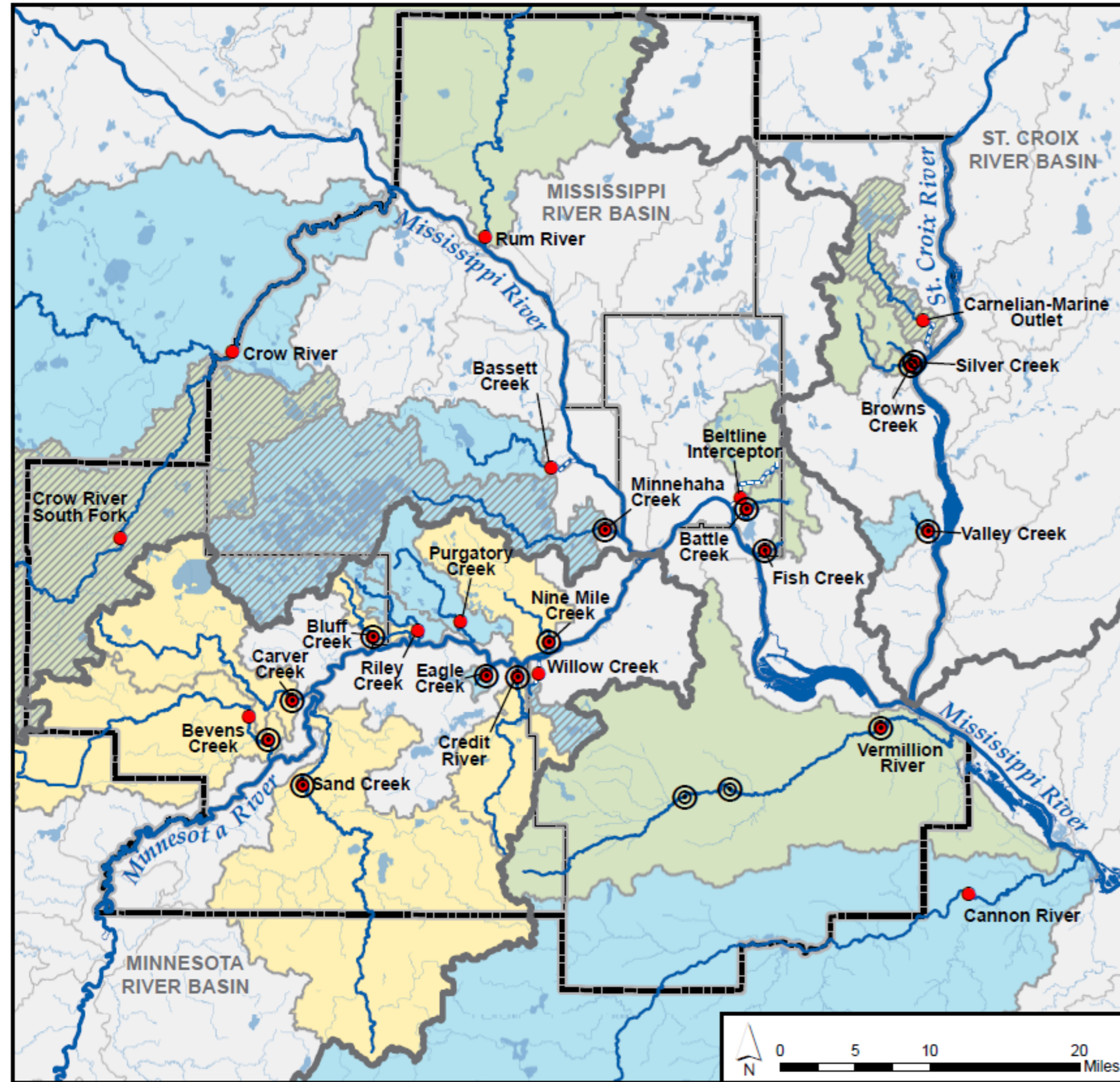
WD = Watershed District

WMC = Water Management Commission

SWCD = Soil & Water Conservation District

Locations

- ⊙ Biological Monitoring Locations
 - MCES Monitored Streams
 - ▨ Previously Monitored Watershed
- Stream Monitoring Programs**
- NPS
 - WOMP1
 - WOMP2



Monitoring Questions

Hydrology

How much water flows here?

Trend

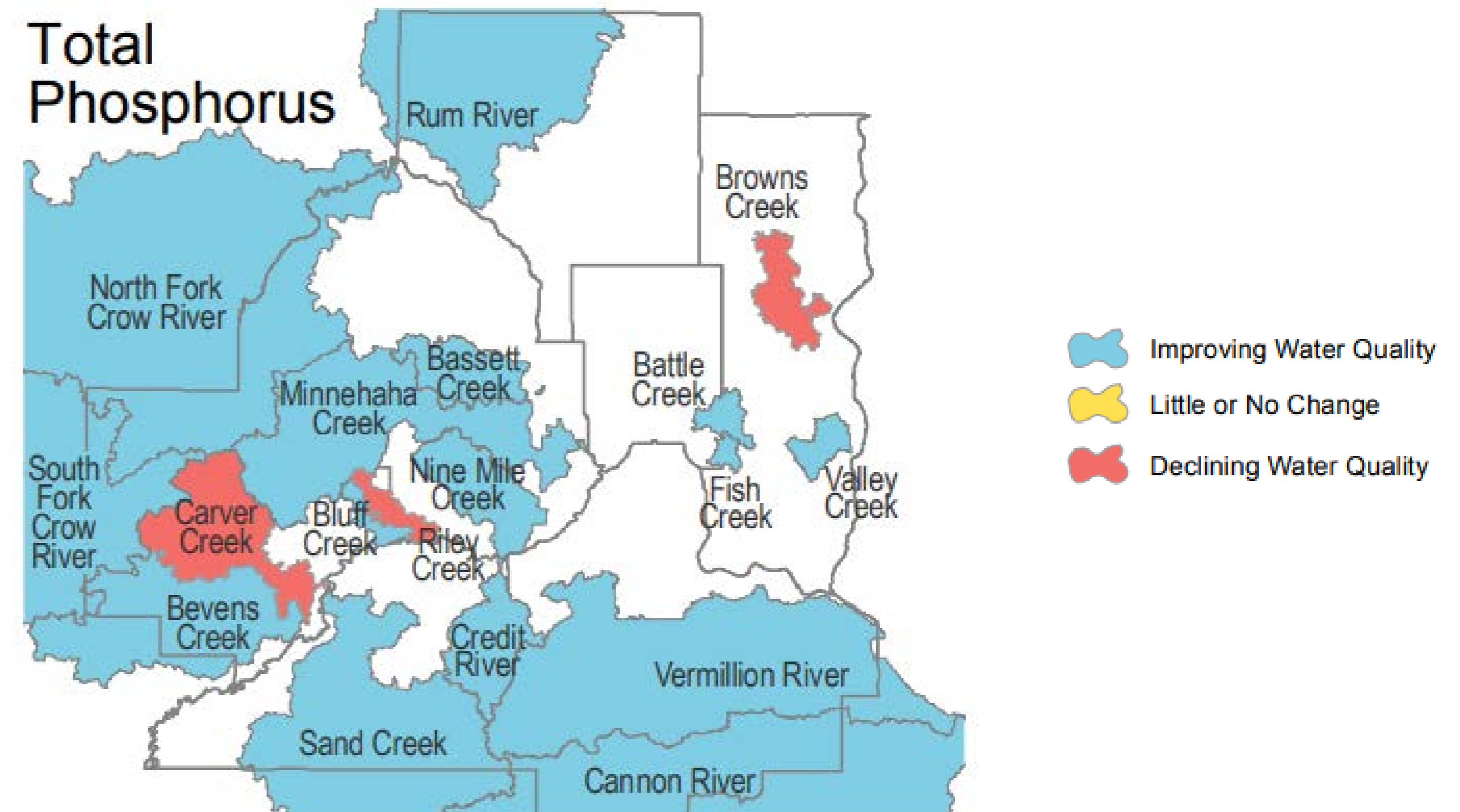
Is the water quality improving or declining?

Chemistry

How clean or dirty is the water?

Ecology

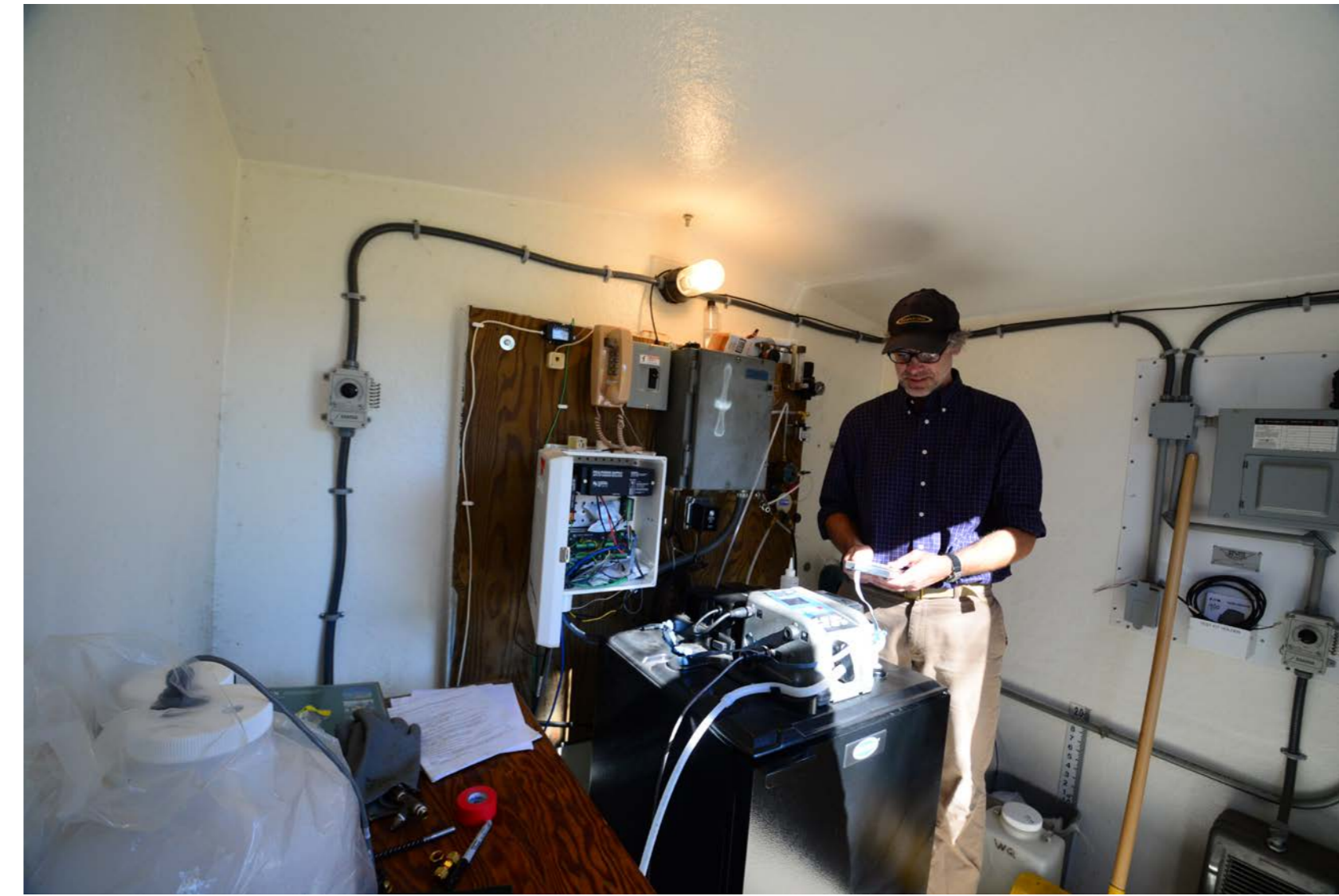
Who lives here?



Hydrology Monitoring



Chemistry Monitoring



Ecology Monitoring



Questions

Casandra Champion

Principal Environmental Scientist

casandra.champion@metc.state.mn.us

651-602-8745