

**Business Item 2020-99 SW:**  
**Joint Powers Agreement with Minnesota  
Pollution Control Agency for the  
Watershed Outlet Monitoring Program**

Judy Sventek, Manager, EQA Water Resources

Environment Committee: March 10, 2020



# History

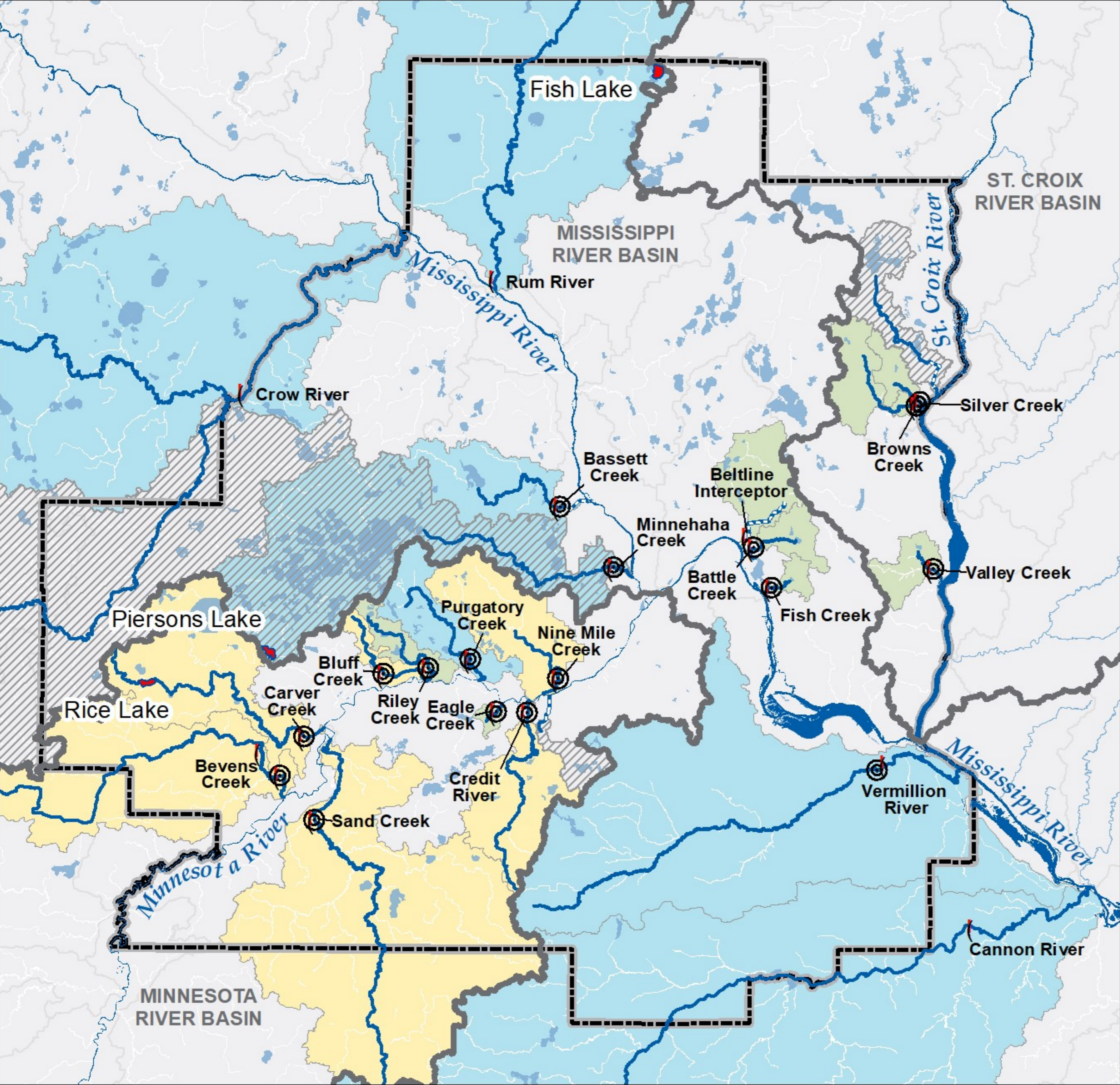
- Program started in 1998 with MPCA funding support
- Since 2007, funding has been provided by the Legislature through Clean Water Funds appropriated to the MPCA
- Data is used by the Council in regional assessments, local watershed management organizations, and MPCA impairment assessments and watershed pollutant load programs




# Background

- 2018-2019 Joint Powers Agreement (JPA) was \$300,000
- 2020-2021 JPA Amendment would:
  - Add \$238,500 to the agreement
  - Extend the termination date to 3/31/2022
  - Add 3 lakes to the funding to help with impairment assessments done by the Minnesota Pollution Control Agency (MPCA)
- The reduction in funding will result in moving Riley Creek in Eden Prairie from the Watershed Outlet Monitoring Program #2 (WOMP2: funded by MPCA) to the WOMP1 program (funded by MCES)






# 2020-2021 WOMP2 Streams and Lakes



-  Biological Monitoring Locations
-  MCES Monitored Streams
-  Previously Monitored Watershed

## Stream Monitoring Programs

-  NPS
-  WOMP1
-  WOMP2



# Proposed Action

That the Metropolitan Council authorize its Regional Administrator to negotiate and execute an amendment to Contract 17G000 with the Minnesota Pollution Control Agency to extend termination date to 2022 and accept Clean Water Funds from the Minnesota Legislature in the amount of \$238,500.

# Questions

Judy Sventek

[Judy.Sventek@metc.state.mn.us](mailto:Judy.Sventek@metc.state.mn.us)

651-602-1156