

Information Item:

The Design-Build Delivery Approach for Selected Metro Plant Capital Projects

Jeannine Clancy, Assistant General Manager Technical Services

Dan Abelson, Metropolitan Council Office of General Counsel

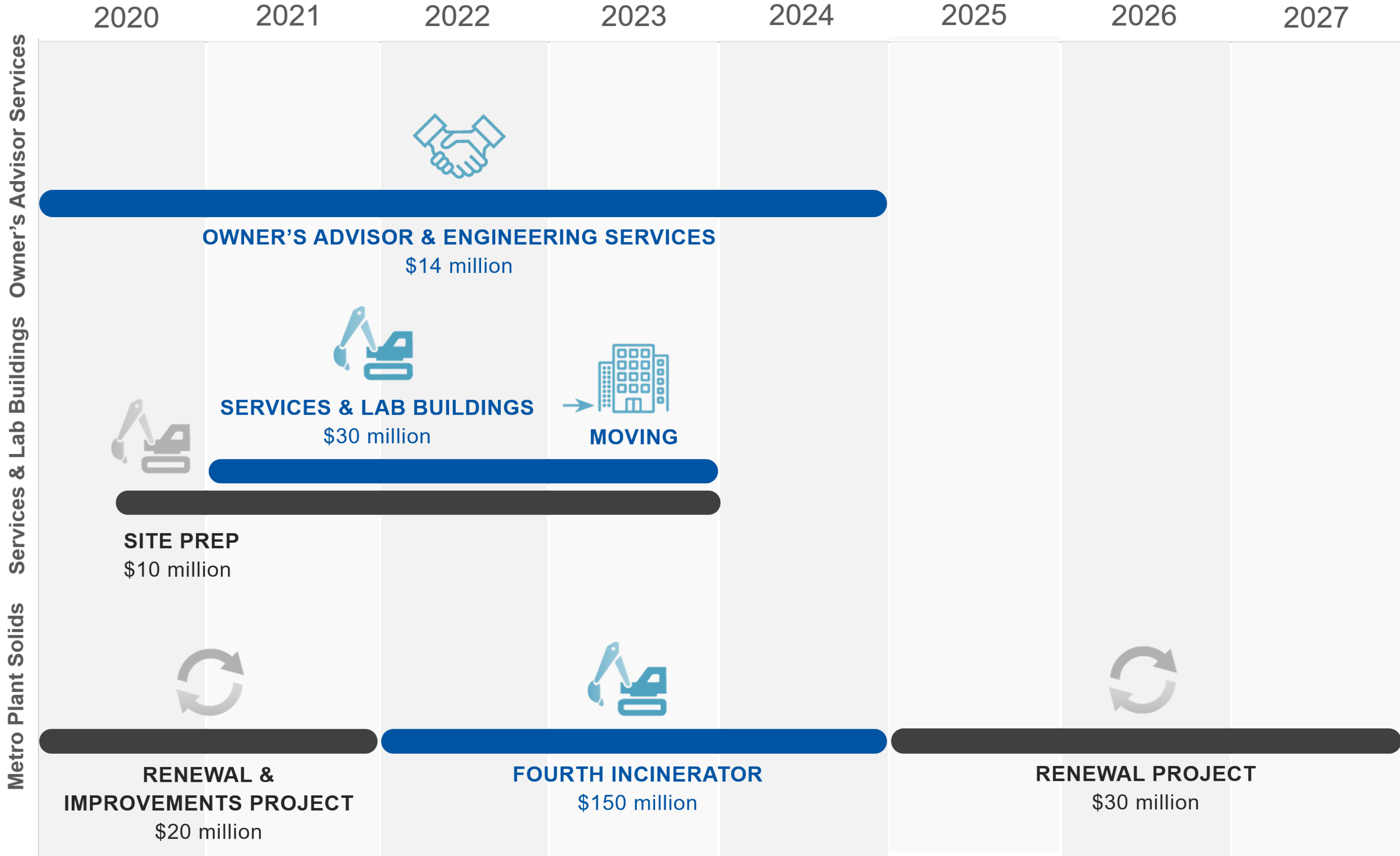
Rene Heflin, Manager Plant Engineering Technical Services

Jody Jacoby, Metropolitan Council Procurement Director

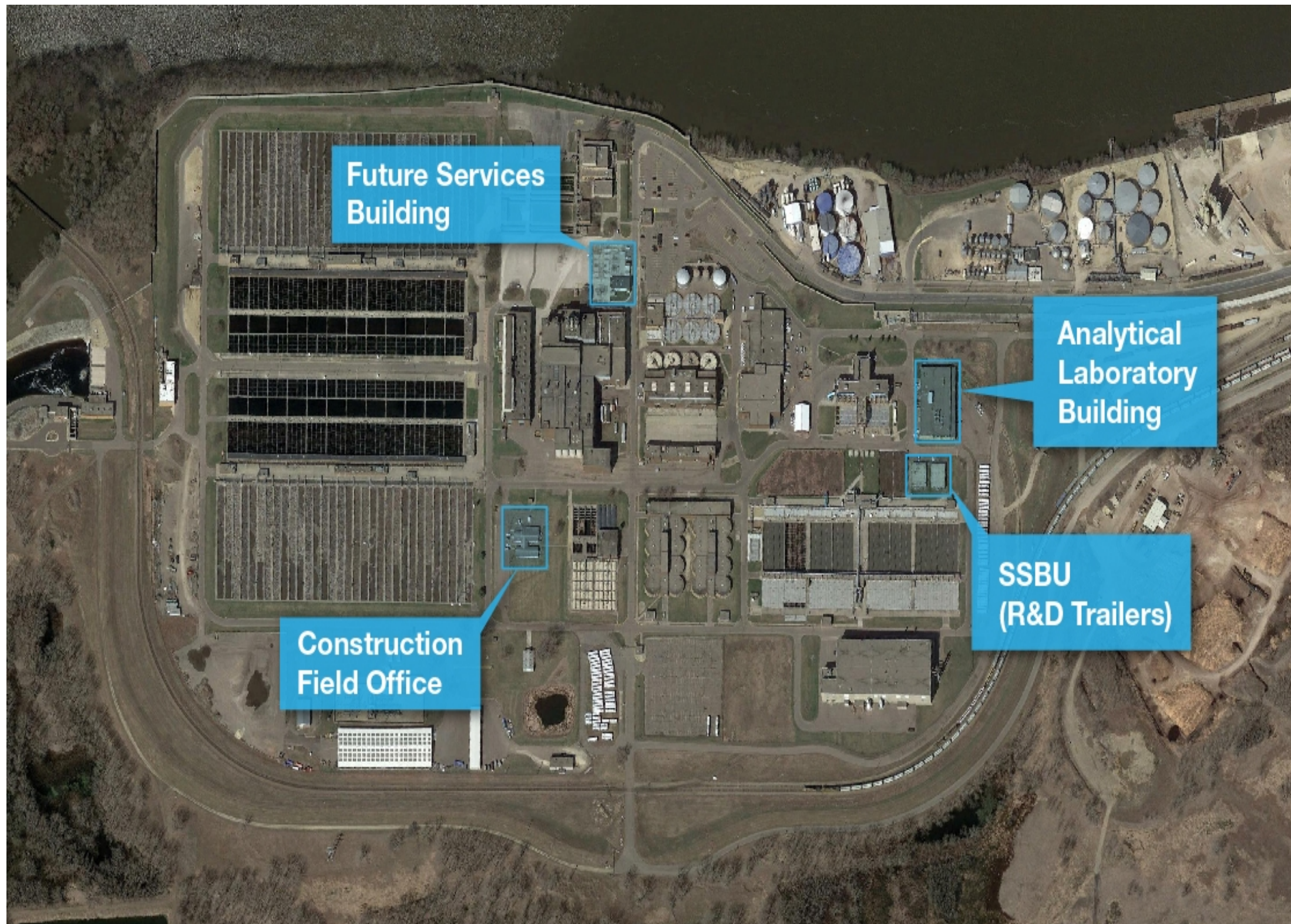
Environment Committee: May 12, 2020



Design-Build Projects Schedule



Services and Analytical Laboratory Buildings Project



Business Objectives and Goals

Assemble work groups in close proximity to improve efficiency and effectiveness

Discontinue use of rental space and temporary trailers

Design the Services Building to accommodate industrial & community customers

Enhance the Metro Plant entrance to integrate Council's Mission/Vision/Values

Design-Build delivery supports effective management of project cost & schedule

Metro Plant Solids Management Improvements

Business Objectives and Goals



Preserve Existing Wastewater Treatment Plant Infrastructure

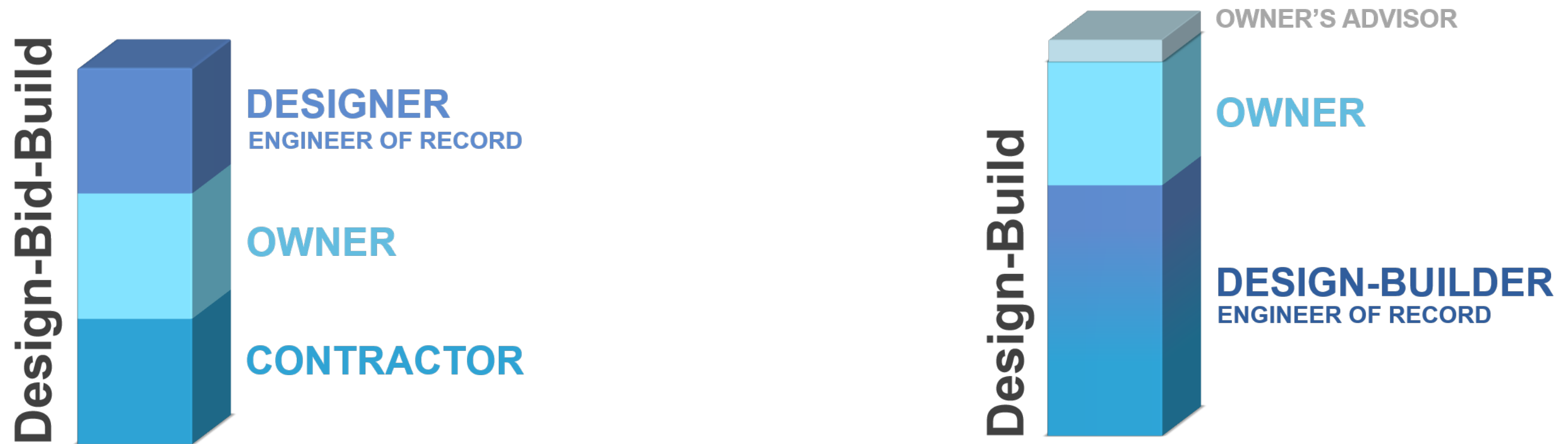
Planned renewal projects will require extended downtime of the existing incinerators.



Serve Regional Population Growth

500,000 new residents in the Metro Plant service area in the Twin Cities by 2050.

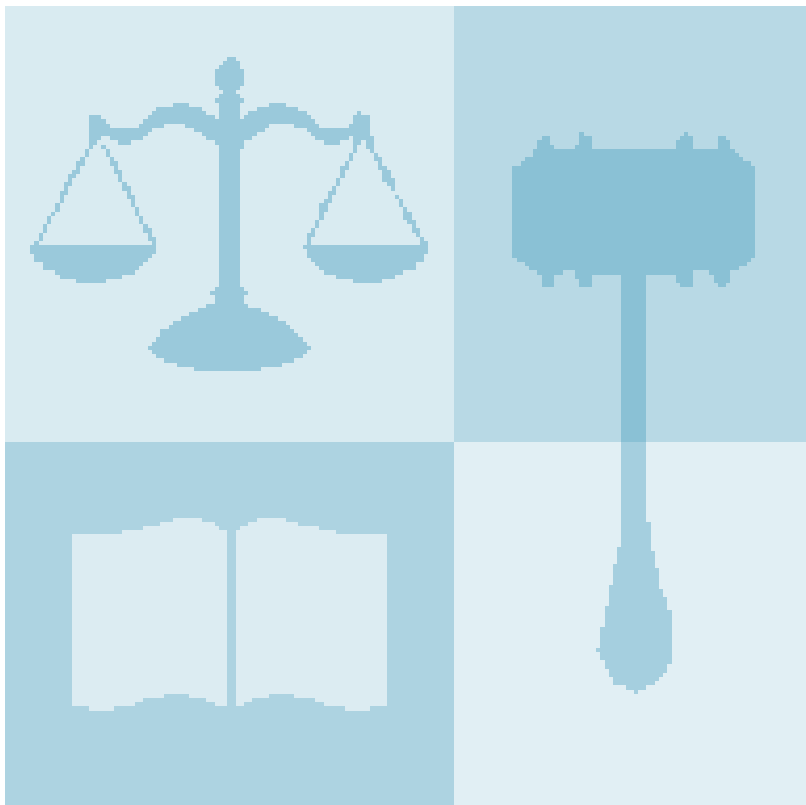
Design-Bid-Build vs. Design-Build



- Two procurements for design & construction
 - Designer selected to prepare detailed design documents
 - Contractor selected through bidding process
- Single procurement for design and construction using a two-step process
 - Design-Builder selected through qualification and proposal steps

Legislative Authority

MCES Authority to Execute Design-Build Contracts



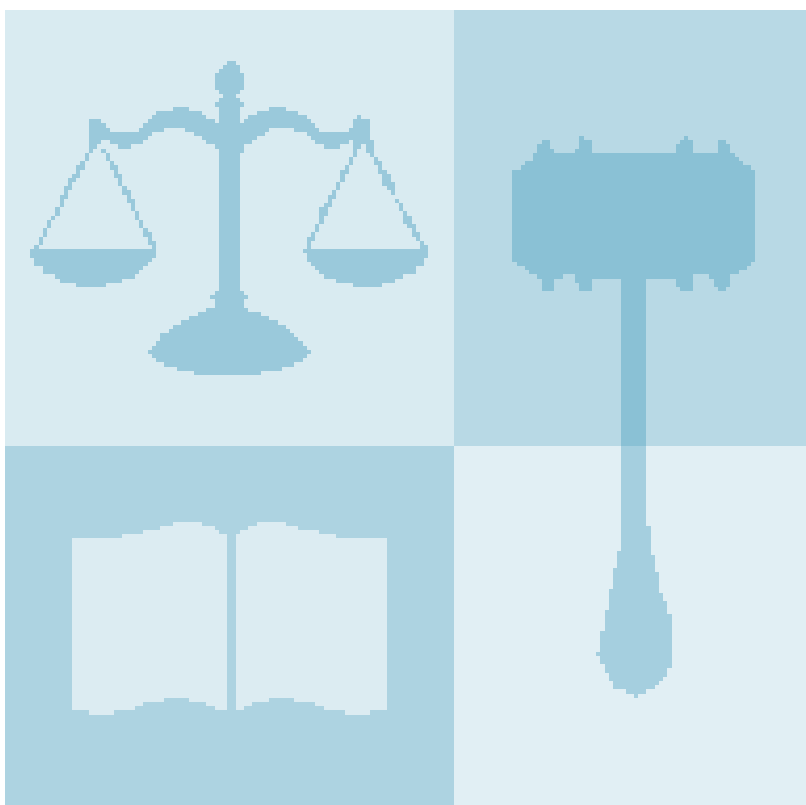
MN Statute 471A

Allows for design-build delivery of capital-intensive public service (wastewater treatment and related facilities)

This chapter was repealed for entities other than the Council.

Notes: Must solicit at least two proposals and hold a public hearing

MCES Authority to Perform Design-Build Construction



MN Statute 471.371

- Allows for Design-Build for Wastewater Treatment Facilities
- MPCA approves plans before construction instead of before bids.
- Contractor must guarantee performance to permit levels for 12 months after operation begins.

Public Agency Design-Build Projects Within the Past 5 Years

Overlay and Bridges

MN Department of Transportation



Transportation
Office Buildings
Treatment Facilities

McCarrons Water Treatment Plant Improvements

Saint Paul Regional Water Service

MN State Senate Office

MN Department of Administration

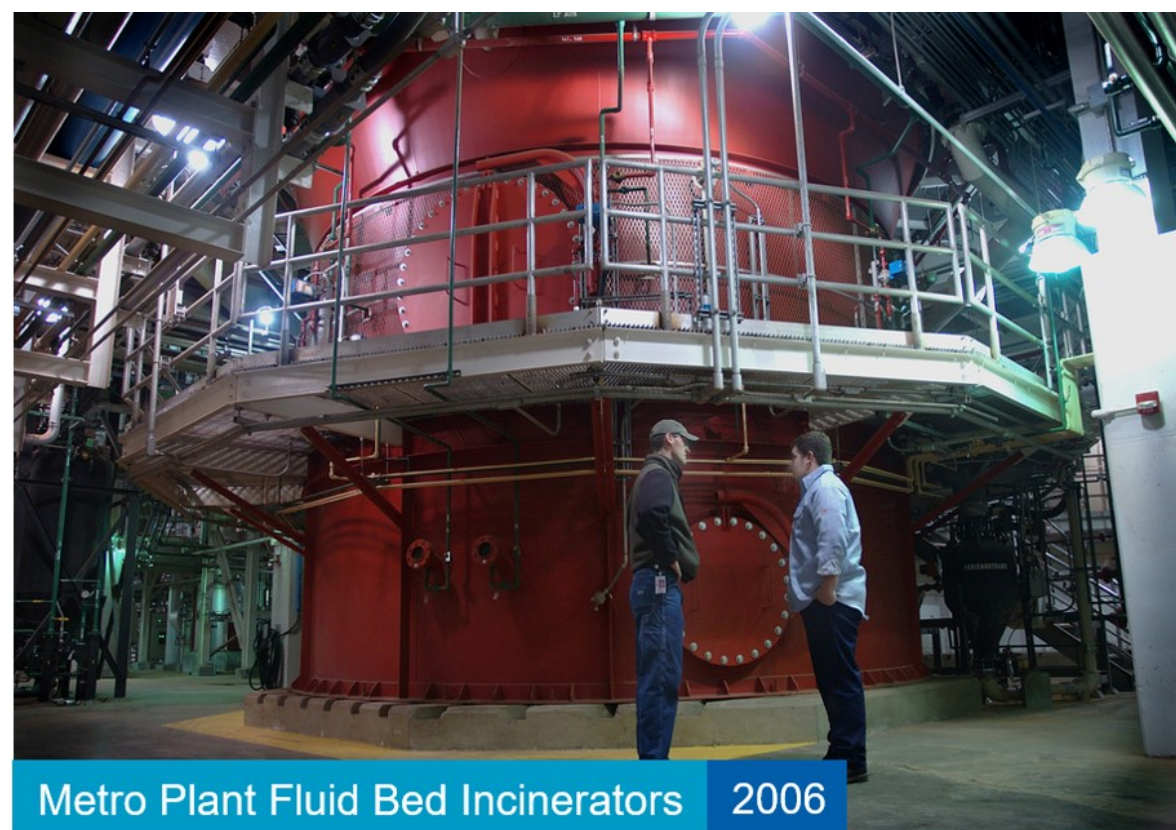


MCES Design-Build Experience

Wastewater Treatment Plants (WWTPs)



Incineration Facilities



Office/Service Facilities

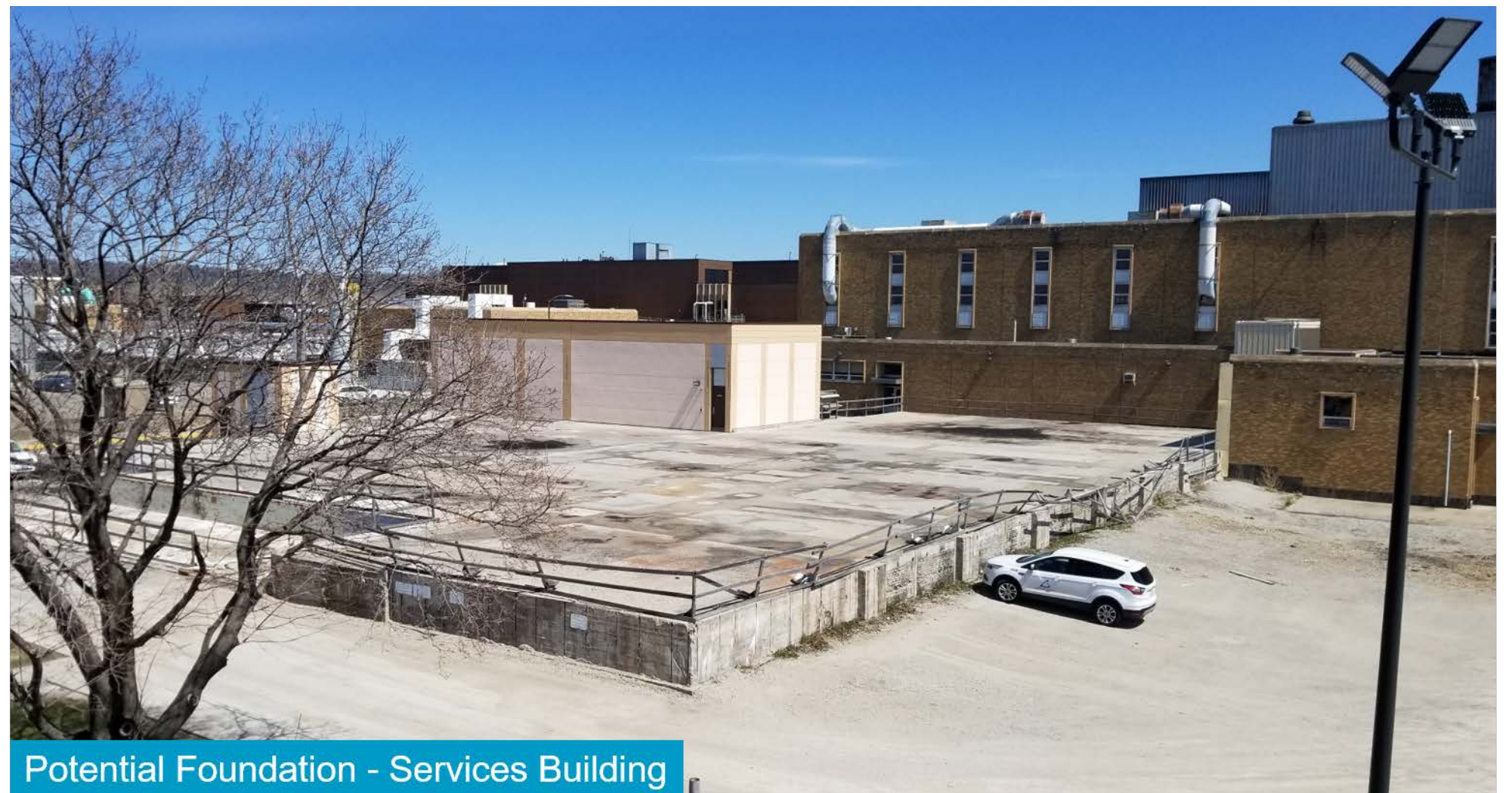


Metro Plant Services Building

- Facility changes to the Analytical Laboratory at Metro Plant, and the construction of a new Services Building at Metro Plant will help meet current and future needs for the MCES workforce and stakeholders.
- Some MCES staff will be impacted by construction and/or relocation; decisions about future locations of workgroups are being made with collaboration and efficiency in mind.
- MCES strives to recruit, develop, and retain a diverse, high-performing workforce.



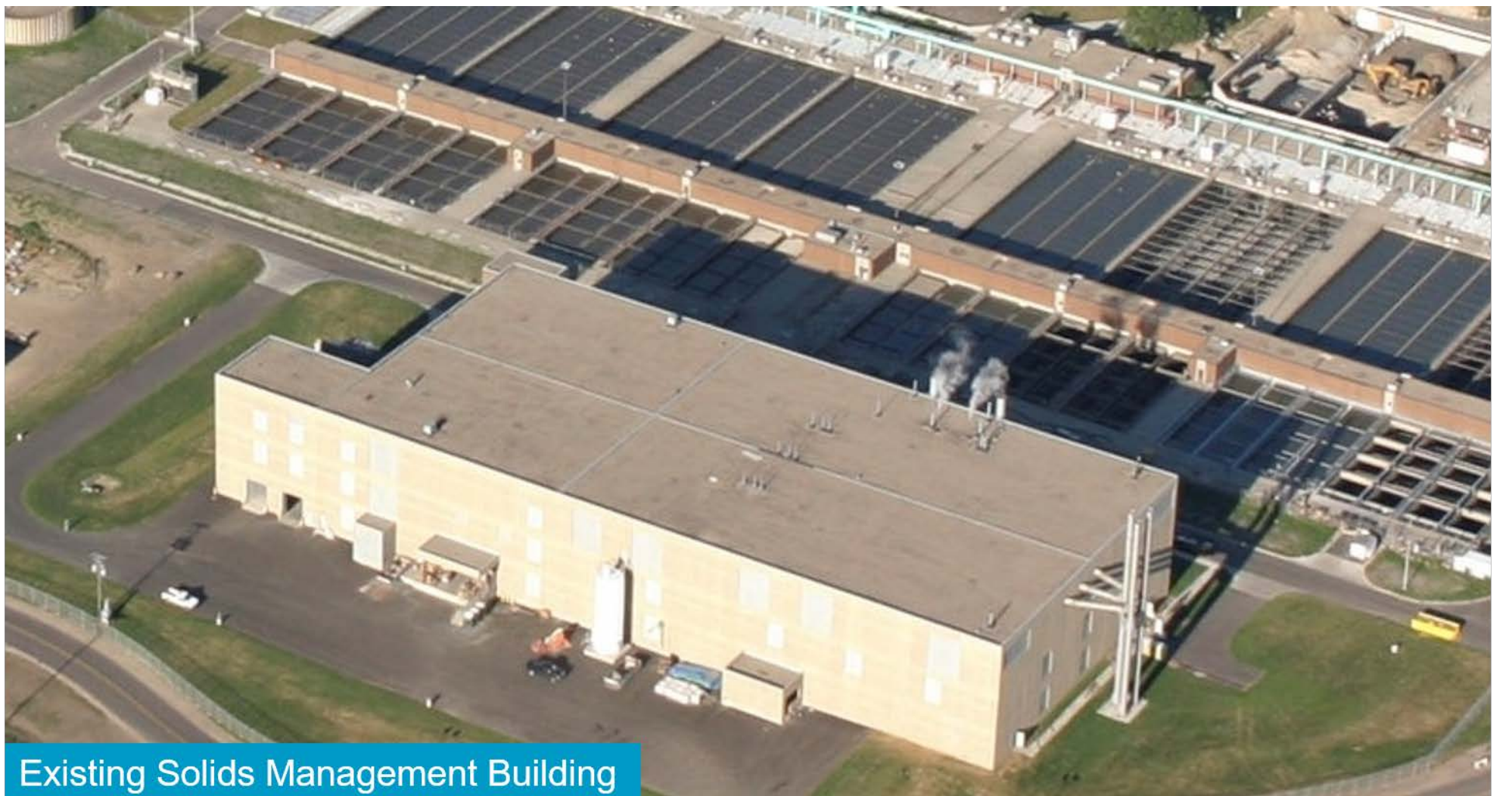
Architectural Concept – Services Building



Potential Foundation - Services Building

Metro Plant Fourth Incinerator

- Compared to other alternatives, building a fourth incinerator is the most cost-effective and sustainable alternative.
- The fourth incinerator will have the lowest impact to the surrounding community.
- Based on the exceptional track record of the existing three incinerators, we have confidence that the fourth incinerator will be able to meet air permit requirements.

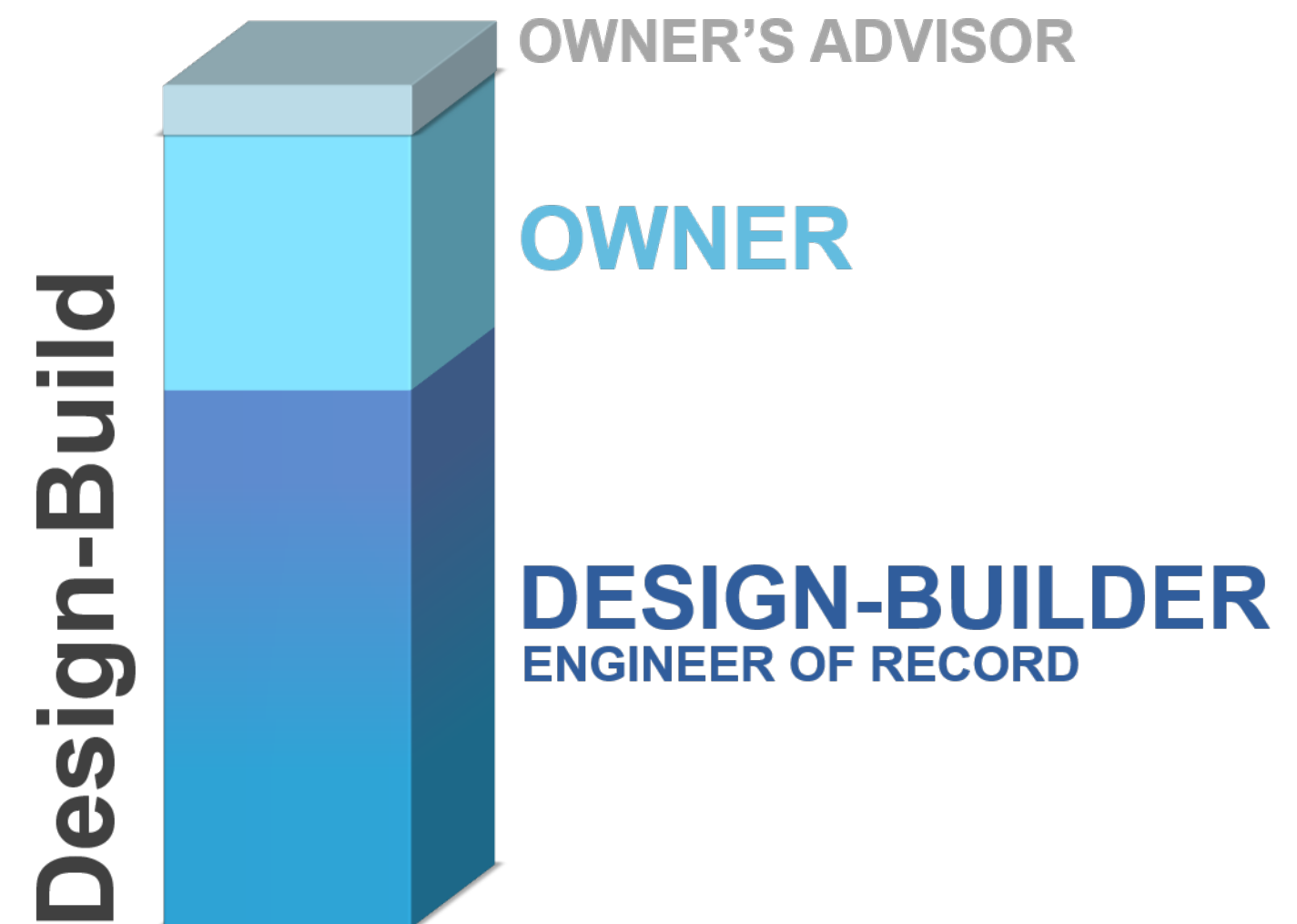


Fixed-Price Design Build Can Achieve Procurement Objectives

Single procurement for design and construction using a two-step process

- Design-Builder selected through qualification and proposal steps

- ✓ Prevailing Wage Rates
- ✓ Mitigate Conflict of Interest
- ✓ Provide opportunity for DBE/MCUB participation



Questions

Rene Heflin

Manager, Plant Engineering and Technical Services

(651) 602-1077

rene.heflin@metc.state.mn.us