

Information Item:

2050 Water Resources Policy Plan Update

Judy Sventek, Water Resources Manager

Kyle Colvin, Wastewater Planning and Community Programs Manager

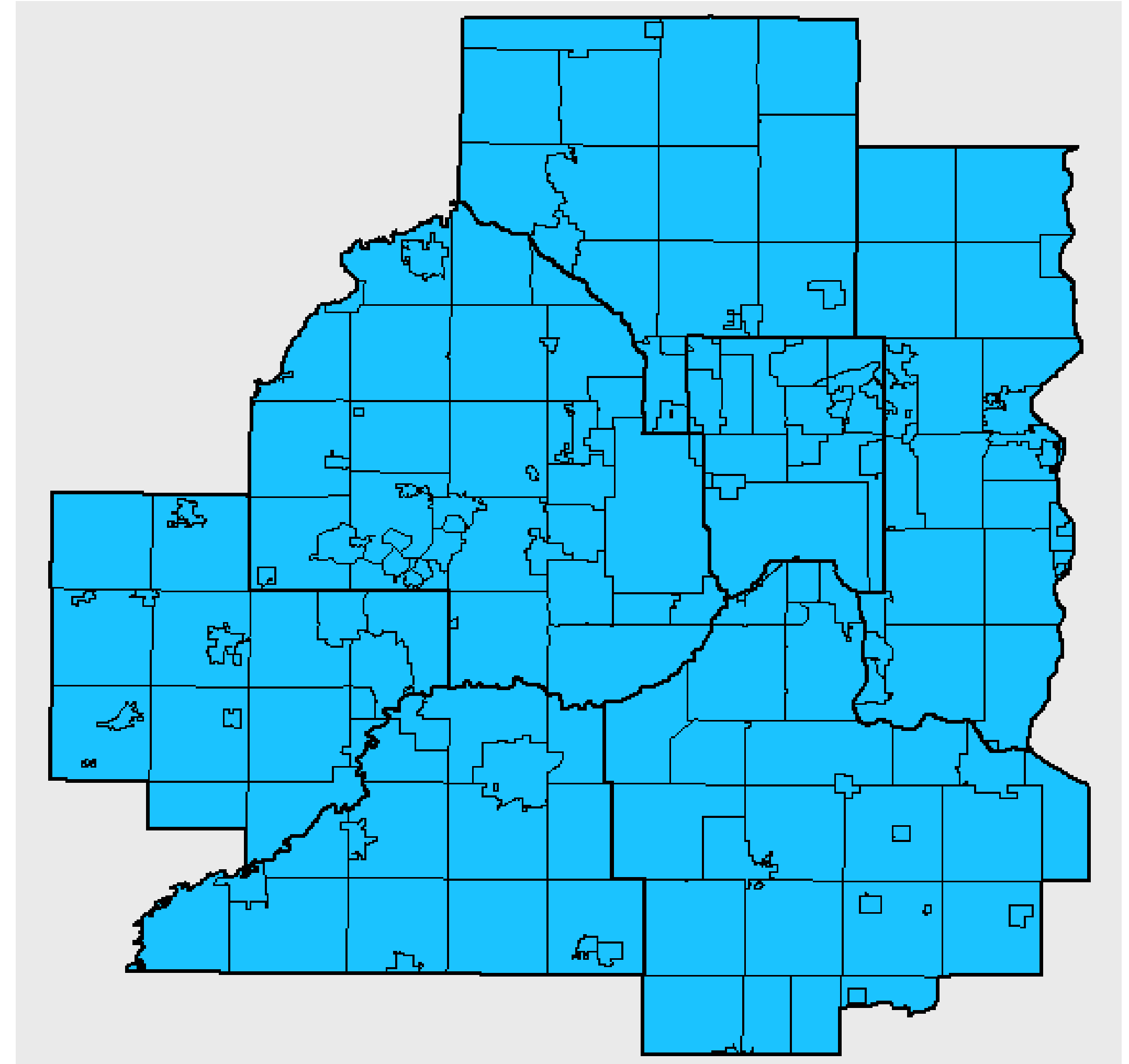
Environment Committee: June 8, 2021



Regional Planning Authority

Minnesota Statutes, Chapter 473

Requires the Council to prepare a comprehensive development guide for the Metropolitan Area that includes system plans for transportation, aviation, regional recreation open space, and wastewater treatment.



Regional Planning Authority: Minnesota Statutes, Chapter 473

Regional Development Guide

Land
Use

Housing

Parks

Transportation

Water

473.146; 473.157; 473.1565

Policy &
Technical
Assistance

Policies

HRA &
Housing
Development
Funding

Policies

Regional
Park Master
Planning

Policies

Transit
System

Policies for
surface
water, water
supply, and
wastewater

Wastewater
System

Regional 10-Year Planning Cycle



Thrive MSP 2040

Land Use



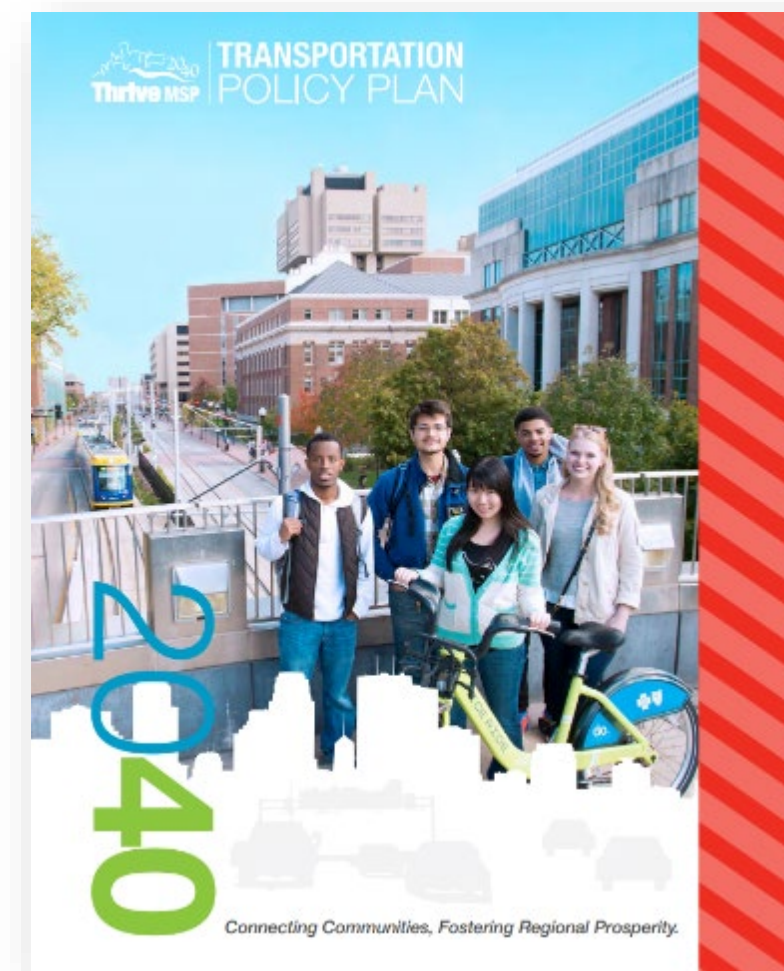
Housing



Water Resources

Wastewater System Plan

Master Water Supply Plan



Transportation



Parks

Thrive MSP 2040 Regional Outcomes

Stewardship



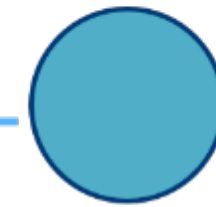
Prosperity



Equity



Livability



Sustainability



1. Working toward sustainability of water resources and water supplies
2. Assessing and protecting regional water sources
3. Promoting water conservation and reuse
4. Investment

Thrive Sustainability Direction

“The region’s water resources are **sustainable**, supported by a regional strategy that balances growth and protection to improve and maintain the **quality** and **quantity** of our water in our lakes, rivers, streams, wetlands and groundwater”



2040 Water Resources Policy Plan Policy Areas

- Provide adequate and high-quality ground and surface water supplies
- Maintain and improve water quality of region's rivers, lakes, streams, and wetlands
- Monitor and assess regional water resources



Promote operational sustainability by:



REDUCING ENERGY USE



REDUCING AIR POLLUTANT EMISSIONS



REDUCING, REUSING, AND RECYCLING

2040 Water Resources Policy Plan Policy Areas

Surface water planning and management

- **Work through current water management structure (watershed approach)**
- **Assess and protect resources**

Maximizing regional costs and benefits

- **Balance costs and benefits to protect and restore region's water resources**

Wastewater Services

- **Planning for regional growth**
- **Focus on water conservation and reuse**
- **Local Inflow and Infiltration Mitigation Plans**

2040 Water Resources Policy Plan Policy Areas

Water supply policy and tie to Master Water Supply Plan



Planning for and supporting sustainable use of water sources



Supporting technical assessments and planning



Supporting cost-effective investments in multi-community water supply infrastructure

Expanded efforts in all areas
(need to work together to solve the problems of today)



GREATER COLLABORATION

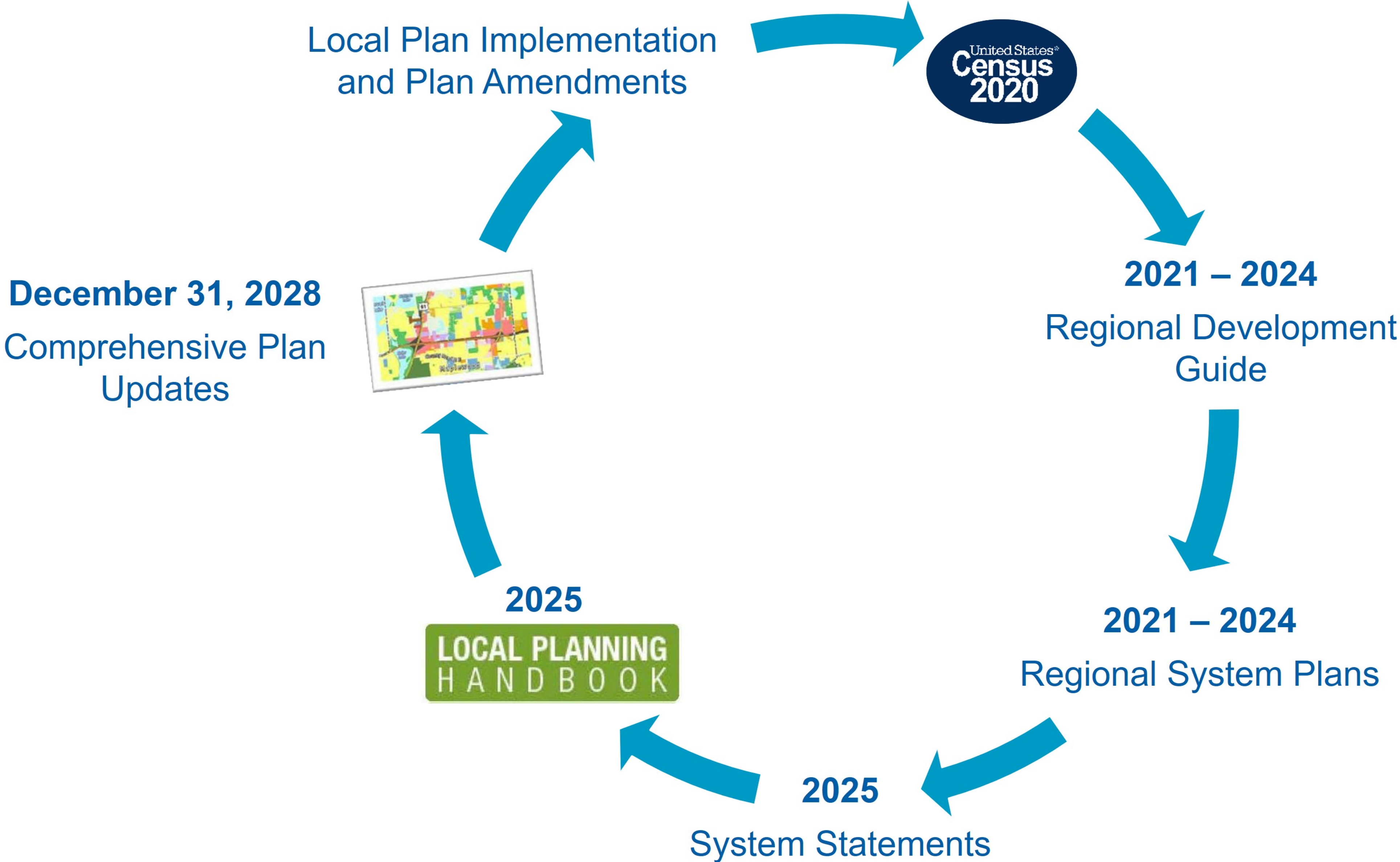


FINANCIAL SUPPORT



TECHNICAL SUPPORT

Regional 10-Year Planning Cycle



Water Resources Policy Plan (WRPP)



A chapter of the Metropolitan Development Guide



The Council's high-level policy plan for:

- Wastewater
- Water supply
- Surface water

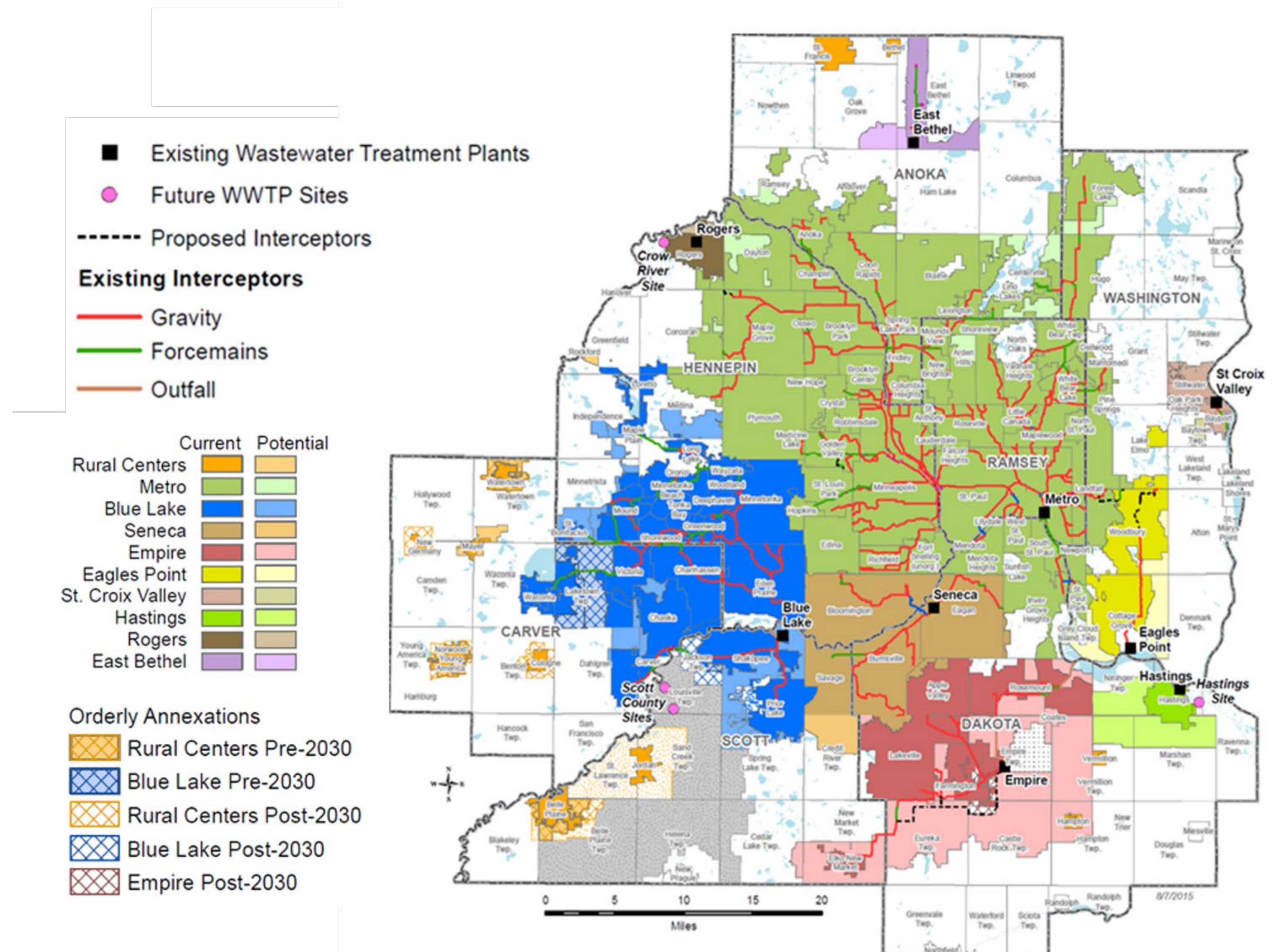


The Wastewater System Plan

Current Long-Term Service Areas

WASTEWATER SYSTEM PLAN

- Long-Term Service Area
- System assets overview
- Pre/post 2050 planned capacities
- Wastewater treatment plant acquisitions and regional service extensions
- Wastewater treatment plant & Interceptor reinvestments
- Forecasts and flow projections (Thrive versus sewer)
- High level regulatory strategies



Potential New Policy Areas



Land Use and Rural Policy

- Cost of service for wastewater in rural areas
- Wastewater treatment in rural areas
- Sub-surface sewage treatment system (SSTS)
- Implications for private wells in rural areas
- Land use policies in rural area

Wastewater System issues

- Reconveyance Policy
- Private inflow and infiltration
- Vector waste and liquid waste receiving

Potential New Policy Areas

- Contaminants of Emerging Concern
 - Chloride
 - PFAS
 - Nitrates
 - Others
- Source Water Protection and Vulnerable Areas



- Water Quality
 - Drinking water
 - Aquatic life
 - Water use for recreation
 - Others

- Water Availability / Water Use / Water Access



Next Steps

Today – 2021

Input on new issues from customers and stakeholders

2022

Develop issues papers to support new policy

2022 – 2023

Second round of input issues papers

2023 – 2024

Share draft policies and strategies and receive input

2024

Draft plan

Early 2025

Formal public review process on draft plan

Mid Year 2025

Adopt new Water Resources Policy Plan

Your Input on New Policy Areas

- **Questions about the process?**
- **Thoughts on the proposed process and schedule we just discussed?**
- **Input on the proposed issue areas we just discussed?**
- **What issues are we missing from your perspective?**
- **Who all do we need to make sure to ask?**
- **Anything else to discuss today?**

Questions

Judy Sventek

Water Resources Manager

Judy.Sventek@metc.state.mn.us

651-602-1156

Kyle Colvin

Wastewater Planning and Community Programs Manager

Kyle.Colvin@metc.state.mn.us

651-602-1151

