

Business Item 2021-273:
Master Contracts for Project
Communications and Public Involvement
to Support MCES Capital Program

Anna Bessel, Assistant Manager, Wastewater Planning and Community Programs

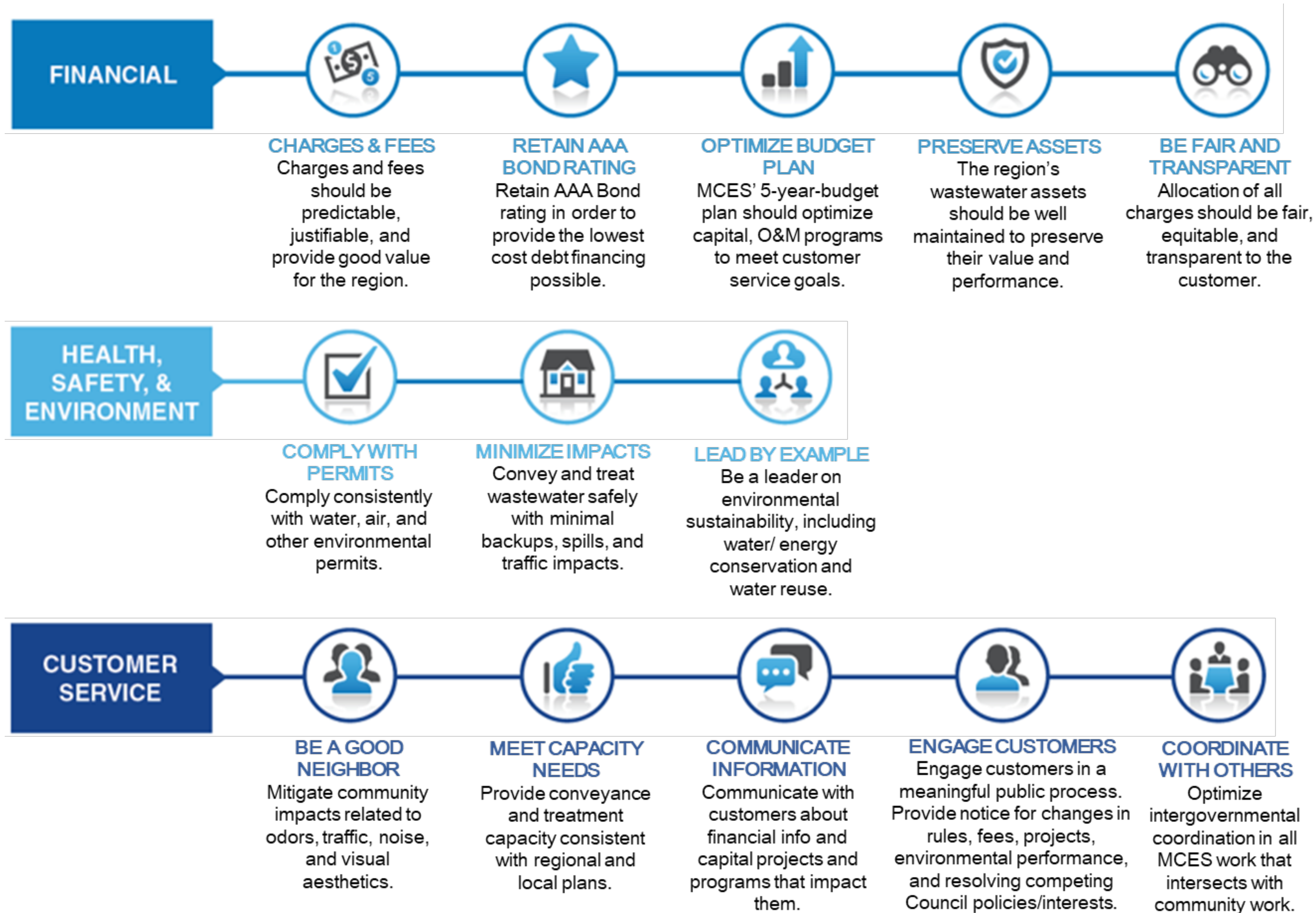
Environment Committee: October 12, 2021



Background

Communication and outreach services are needed to implement the authorized multi-year capital program for the MCES interceptor system and treatment plants. The total contract amount was based on a level of effort estimate by MCES Wastewater Planning and Capital Project Delivery staff.

Customer Level of Service



Proposed 2022 Capital Program



Capital Project Communications

Brooklyn Park-Champlin Area Regional Sewer Rehabilitation

Champlin (Site 1) Project Overview

Metropolitan Council Environmental Services (MCES) is making improvements to aging and deteriorating regional sanitary sewer facilities that serve homes and businesses in the cities of Brooklyn Park and Champlin. The Champlin site is located on Xylon Ave. along Emery Village Dr. up to the South Pond Trail. Work will include rehabilitating the sanitary sewer through existing manholes. Construction will also include using Emery Farms Park for the construction work and storing materials during the construction and a City trail for laying the temporary wastewater conveyance pipe.

Schedule
The MCES project is scheduled to begin February 2019 and will take approximately 9-12 months to complete.

Sewer Improvement Process

We are using a process called Cured-in-Place-Pipe (CIPP) - installing a liner inside the existing sewer pipe and manholes.

CIPP is a technique that avoids large amounts of excavation by installing a liner in the existing sewer pipe through existing manholes.

CIPP Installation



- Handouts
- Project websites
- Signage
- Educational Videos
- Social media postings

Capital Project Public Engagement



Translation Information:

If you need this information in another language or alternative format:
Brenda Morales, (763) 315-8466.

Si usted necesita esta información en español:
Brenda Morales, (763) 315-8466.

Yog koj xav kom txhais rau lu Hmoob, hu:
Xai Vue, (763) 493-8174.

- Open houses (pre-pandemic)
- Socially distant neighborhood meetings
- Translation Information
- Virtual information sessions

New Fridley Lift Station

• Features being incorporated into the new lift station design

- Improved resiliency
- Odor control
- Structure sized to handle increasing flows due to regional growth
 - 48 Million gallons per day 20-year flow design
 - 67 Million gallons per day ultimate flow design



Minnesota River which is just beyond the

Fridley Lift Station Virtual Public Meeting



Pop-up Meetings

Proposal Solicitation and Review

- A formal solicitation was issued on June 4, 2021.
- Seven proposals were received on July 14, 2021.

Proposal Evaluation

- The proposals were evaluated by three MCES staff and one Council Communications staff.
- Based on strengths and ability to provide communication needs to the MCES capital program, five master contracts are recommended in the following amounts:
 - \$500,000 to HDR Inc.
 - \$500,000 to Zan Associates
 - \$400,000 to Goff Public
 - \$300,000 to WSB & Associates
 - \$300,000 to Bolton & Menk

MCUB Goals

- The Office of Equal Opportunity (OEO) assigned a Metropolitan Council Underutilized Business (MCUB) goal of 10% for this locally funded procurement.
- Procurement staff reviewed the directory and contacted potential Disadvantaged Business Enterprise (DBE)/MCUB vendors to make them aware of the solicitation.
- To be found responsive, a bidder must meet the DBE requirements of the contract either by meeting the DBE goal or making good faith efforts to meet the goal.

Proposed Action

That the Metropolitan Council authorizes its Regional Administrator to award and execute master contracts 21P109 for communications and engagement related to MCES capital projects to HDR Inc., Zan Associates, Goff Public, WSB & Associates, and Bolton & Menk, totaling \$2,000,000.

Questions

Anna Bessel

Assistant Manager

Wastewater Planning and Community Programs

anna.bessel@metc.state.mn.us

651-602-1210