



Water Policy Plan Update

Policy discussion and direction



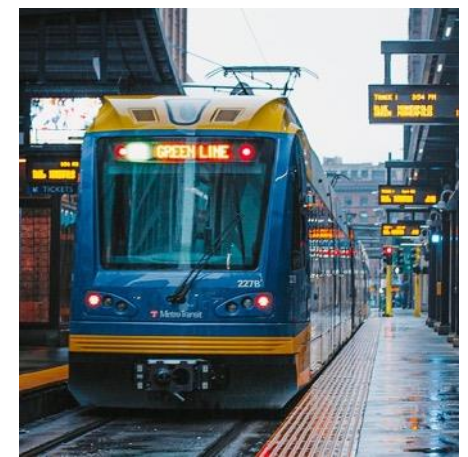
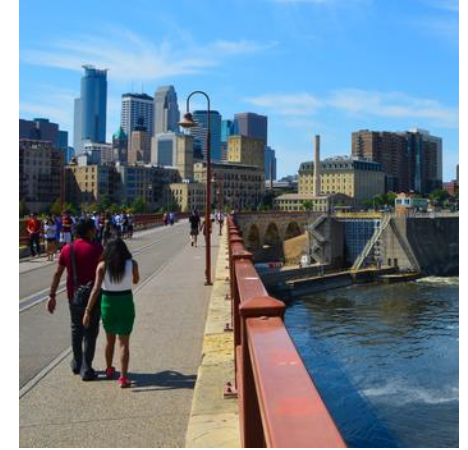
Jen Kostrzewski

January 23, 2024

Water Policy Plan (WPP)

Plan Purpose

- Met Council is developing the 2050 Water Policy Plan, which **focuses on ensuring sustainable water resources in the region**. It is a part of and informed by the Regional Development Guide.
- The WPP provides a **framework for integrative water planning** (wastewater, water supply, and water resources) the Metro Area Water Supply Plan, and the Wastewater System Plan.
- It contains water **policies, strategies, and actions** for both the Met Council and our 180+ local governments within the seven-county region.
- WPP policies **will commit the Council** to take action in the areas of long-range visioning and planning, regional system investments, facility management, technical assistance, research and assessment, and partnerships.



Regional Values, Vision, and Goals

Values

Values are core beliefs or principals that guide the work of the Council, our expectations of partnerships, and our policy and program development.

Vision

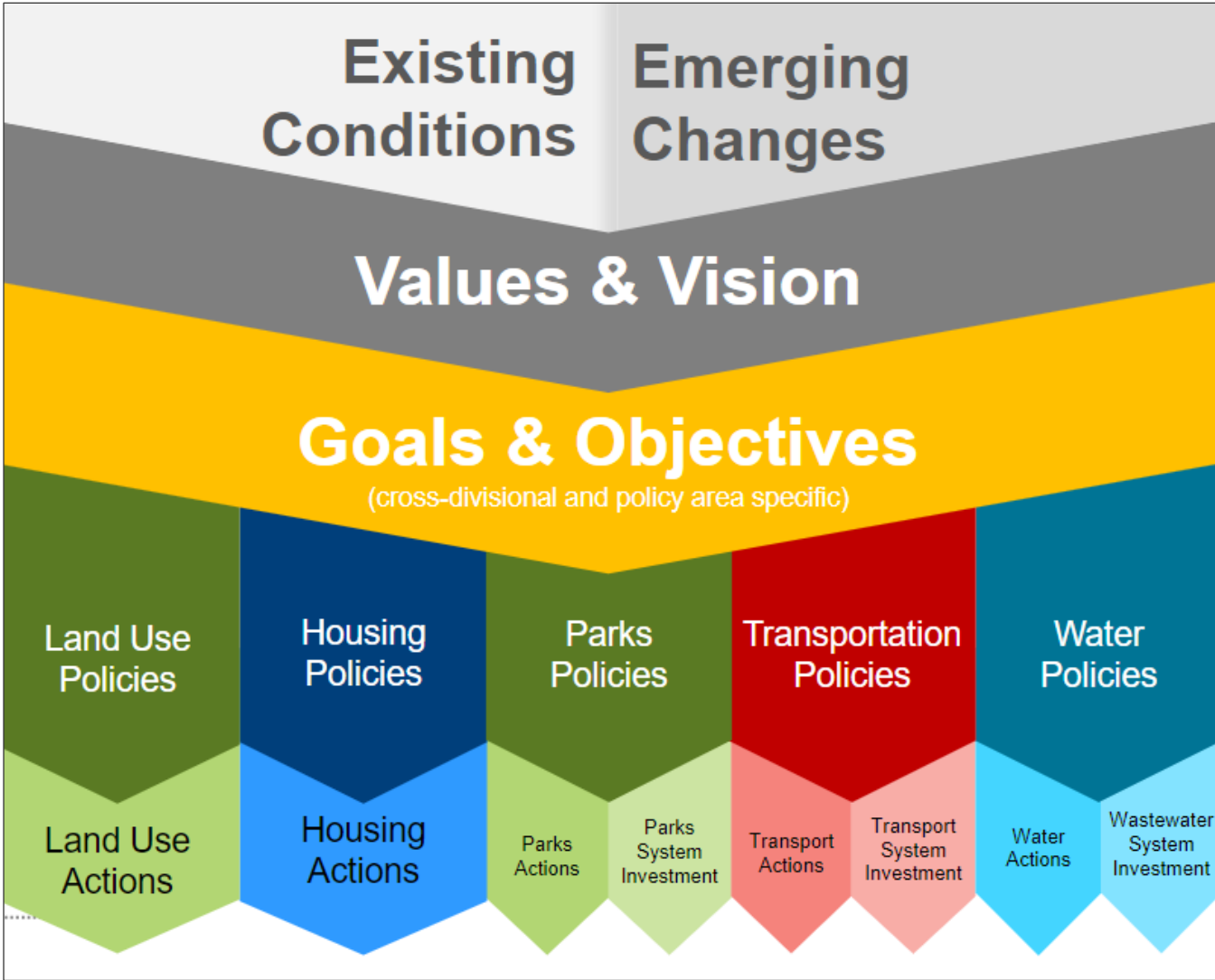
Our vision is what we want to achieve for the region through our policies, practices, programs, and partnerships.

Goals

Our goals broadly describe the desired outcomes that we want to achieve for the region.

Cross-Cutting Goals

Goals that require special collaboration across policy and work areas.



Draft WPP objectives



SUSTAINABLE WATERS: Ensure clean, abundant waters for current and future regional needs



FUNDING: Sustainably fund local and regional water protection and planning efforts.



CLIMATE: Create climate-resilient water sources, ecosystems, and water infrastructure through mitigation, innovative design, and adaptive planning.



HEALTH: Protect public and ecosystem health to maintain, restore, and enhance a high quality of life across the region.



INFRASTRUCTURE: Maximize water infrastructure investments and identify future investment opportunities that result in benefits at multiple scales.



EQUITY: Provide equitable water benefits and water services that are accessible and shared amongst all residents and communities.

Policy template

Topic Area

Narrative language to set context for policy.

<p>Regional Water Policy</p> <p>The policies are intended to apply for the whole region, knowing that there are many agencies, organizations, and people connected by water.</p>
<p>Desired Outcomes:</p> <p>Statements that describe specific changes that will result of the policy.</p>
<p>Connected Objectives:</p> 
<p>Example Actions:</p> <p>PARTNER</p> <ul style="list-style-type: none">• Actions that require collaboration with other organizations to enact. <p>PLAN</p> <ul style="list-style-type: none">• Actions that plan to create, protect, maintain, enhance, and restore regional waters and water infrastructure. <p>PROVIDE</p> <ul style="list-style-type: none">• Actions that help the Met Council deliver our water planning and treatment services to the region.

Draft policy topics



- Integrated Water Policy
- Water and Land Use Connection Policy
- Water and Climate Resiliency Policy
- Equitable Water Outcomes Policy
- Water Conservation and Efficient Use Policy
- Water Monitoring, Data, and Assessment Policy

More policies to come...

Breakout discussion

- **What are your first impressions?**
- **Are we on the right path?**
- **Should we modify the policies?**
- **Did we miss an action?**

Thank you

Jen Kostrzewski

Assistant Manager, Water Planning and Policy
Jennifer.Kostrzewski@metc.state.mn.us

Judy Sventek

Water Resources Manager
Judy.Sventek@metc.state.mn.us

Kyle Colvin

Manager, Wastewater Planning and Community Programs
Kyle.Colvin@metc.state.mn.us

