

Information Item

Interceptor System Condition Assessment Program



Environment Committee: September 23, 2025

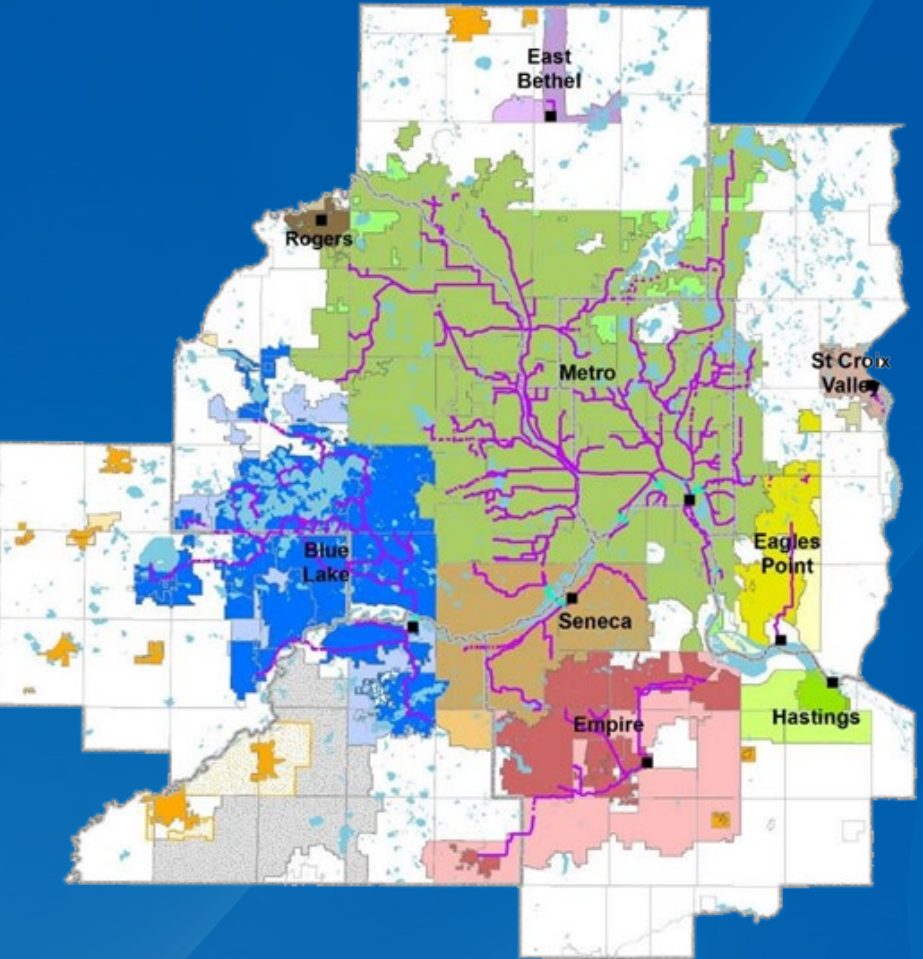
Adam Gordon



Contents

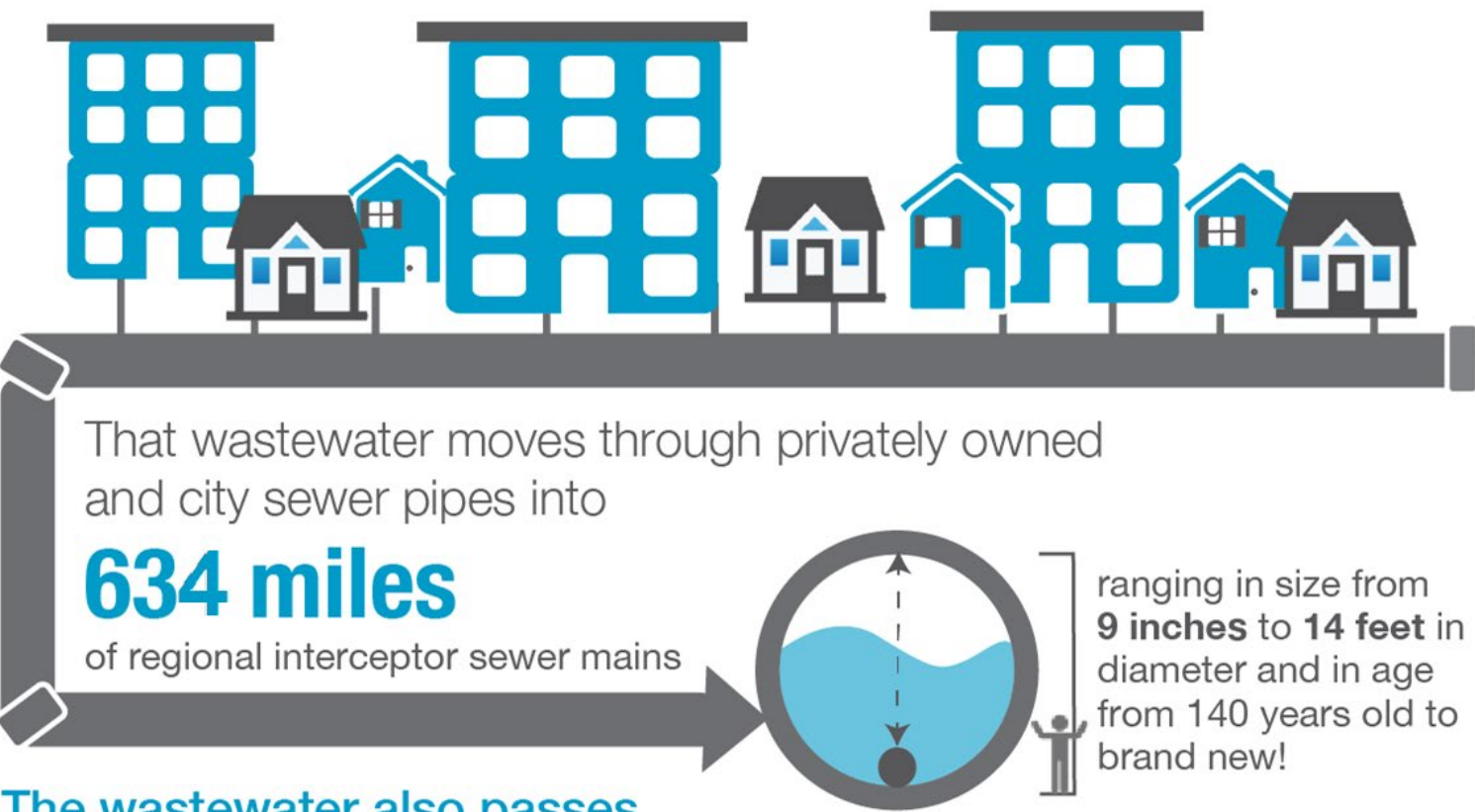
| | |
|-------------------------------------|----|
| Contents | 1 |
| Condition Assessment/Prioritization | 2 |
| Meter Program | 6 |
| Odor Control Program | 8 |
| Lift Station Program | 10 |
| Pipeline Assessment Programs | 12 |

Regional wastewater system

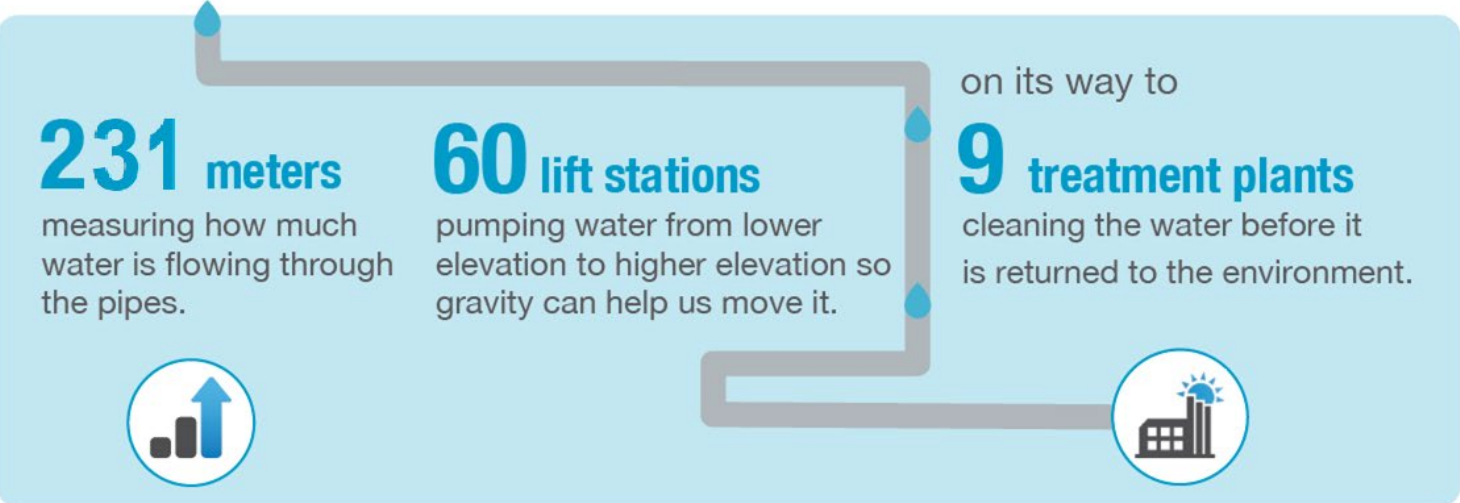


moves and treats **250 million** gallons of wastewater each day

serving **2.8 million** people in 111 communities in the 7-county Twin Cities metro region



The wastewater also passes



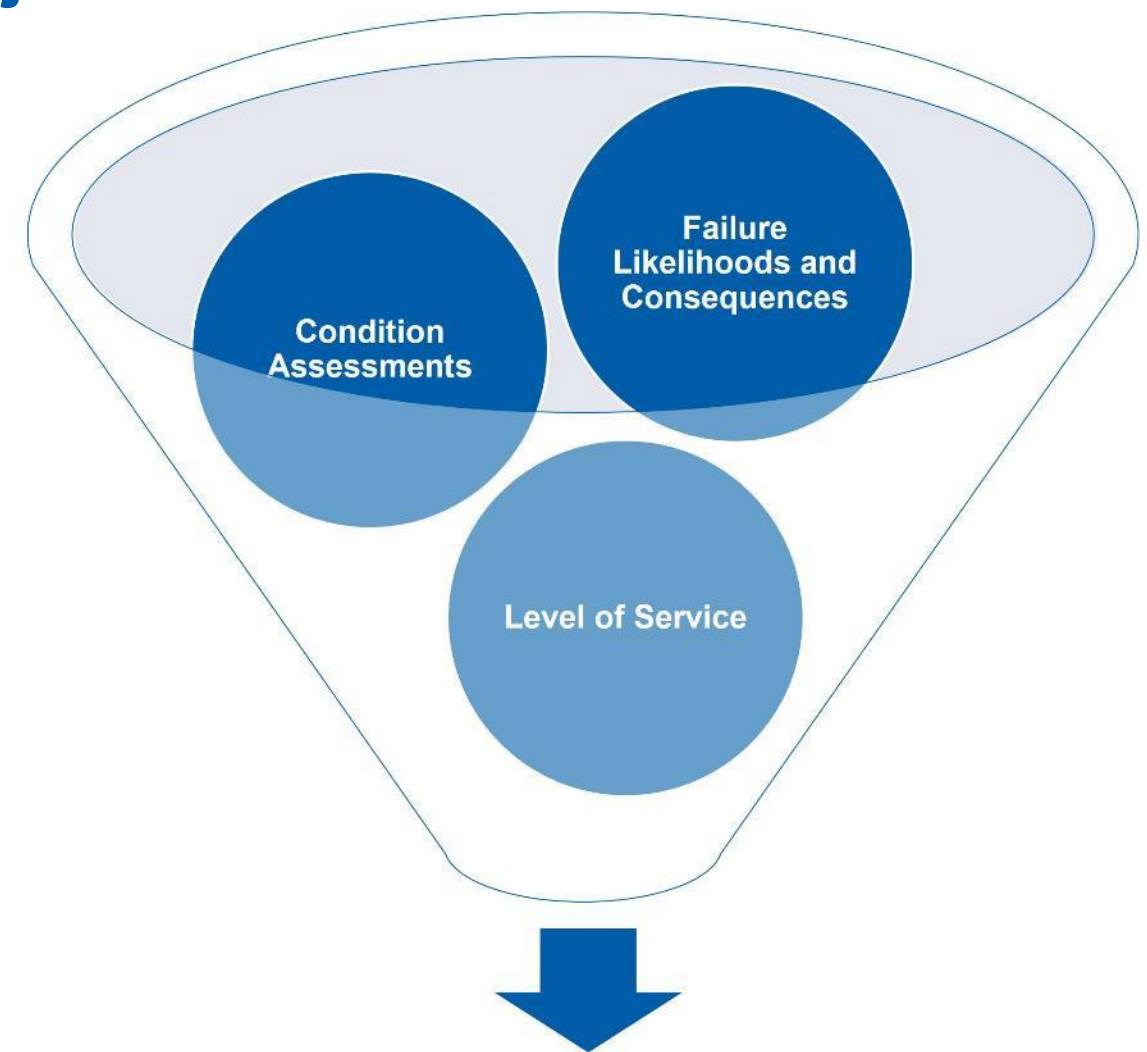
New Project Identification

Primary Factors used in identifying new projects

Facilities are evaluated based on asset condition, capacity, or quality issues using a risk approach.

Risk: Product of Consequence of Failure (following Level of Service) and Likelihood of Failure (identified through assessment)

| ➤ Consequence | Likelihood |
|---------------|-------------|
| 1. Negligible | 1. Rare |
| 2. Minor | 2. Unlikely |
| 3. Moderate | 3. Moderate |
| 4. Major | 4. Likely |
| 5. Severe | 5. Certain |



Capital Project Prioritization

Asset Management – Condition Assessment Planning

Condition assessments drive over 2/3 of the Interceptor Capital Program

Resources:

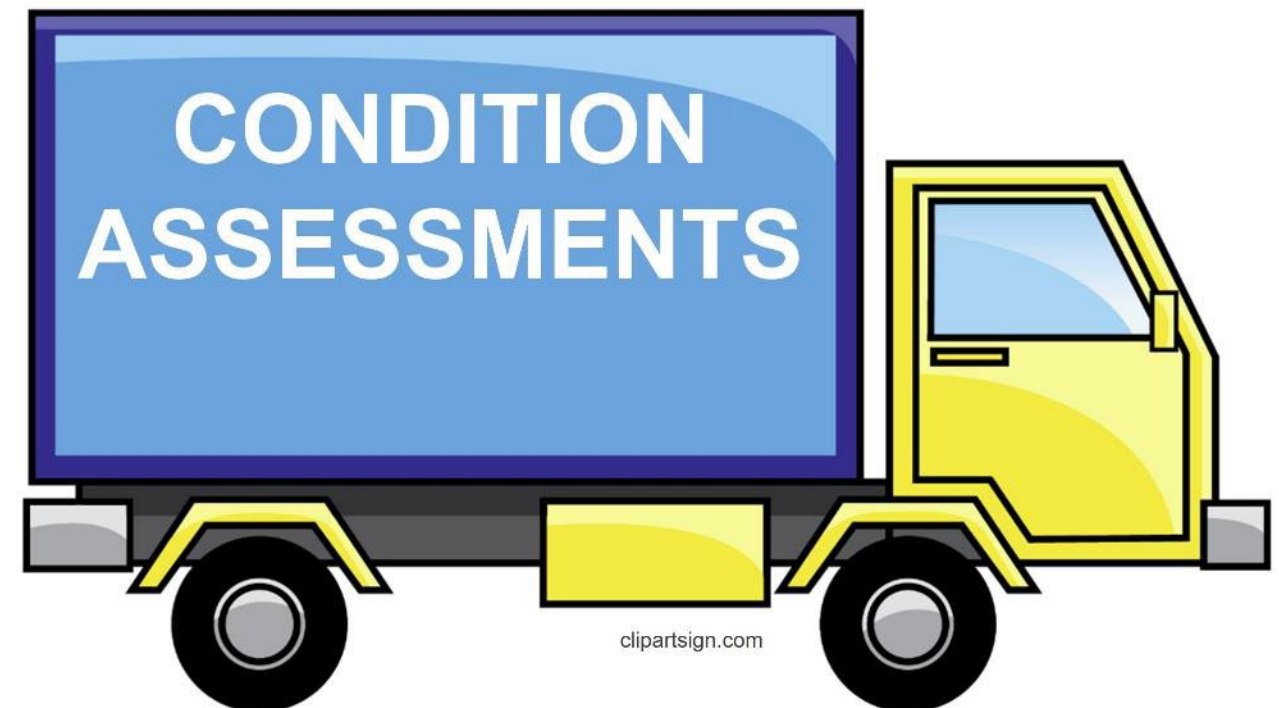
- How much is performed internally?
- How much is contracted?
- Who is responsible?

Schedule:

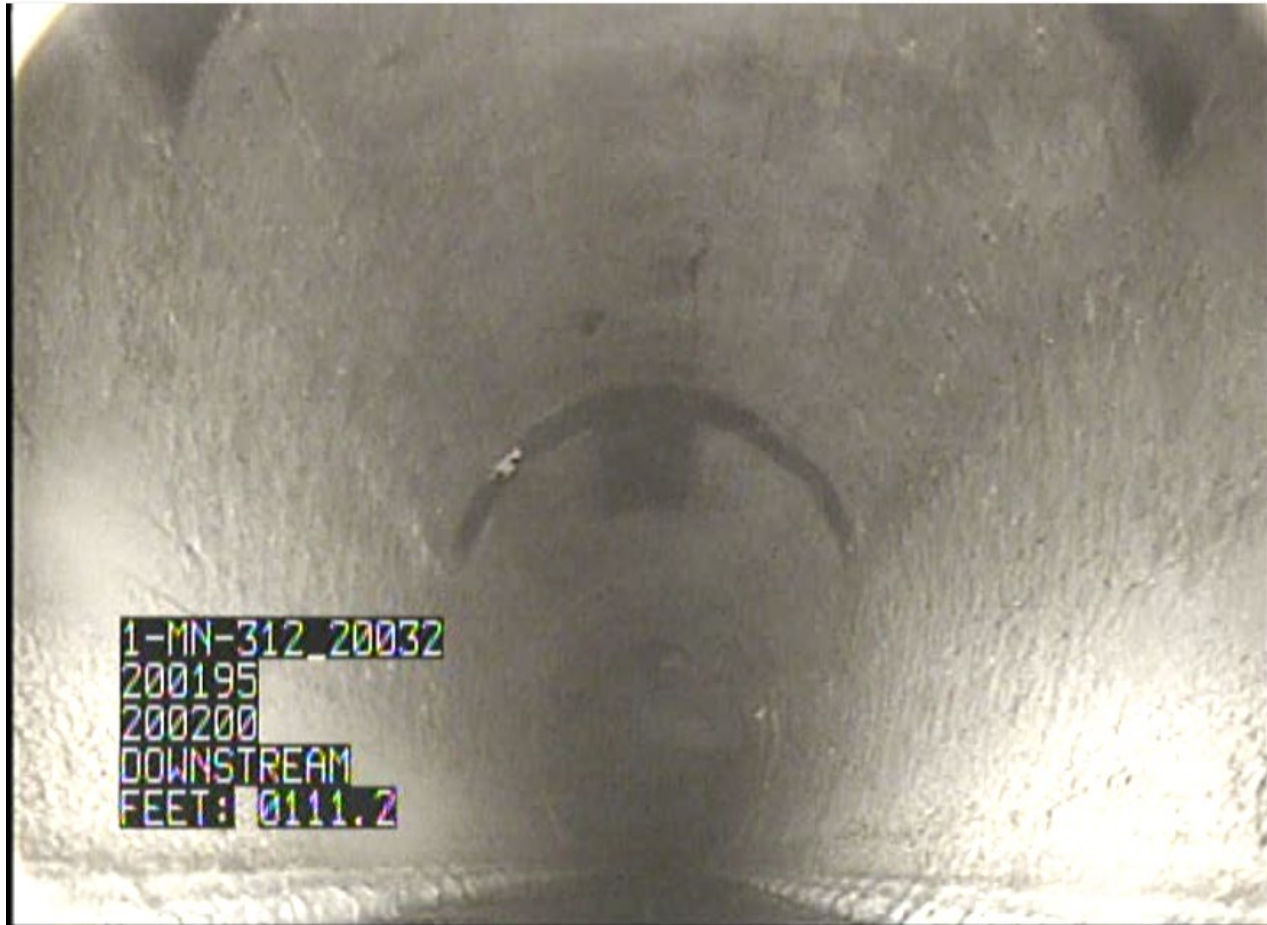
- When is the assessment work completed?
- When is the data shared?

Data:

- Where is the information kept?
- What is reported out?
- How is the data updated?



Why Condition Assessments Matter?



1-MN-312



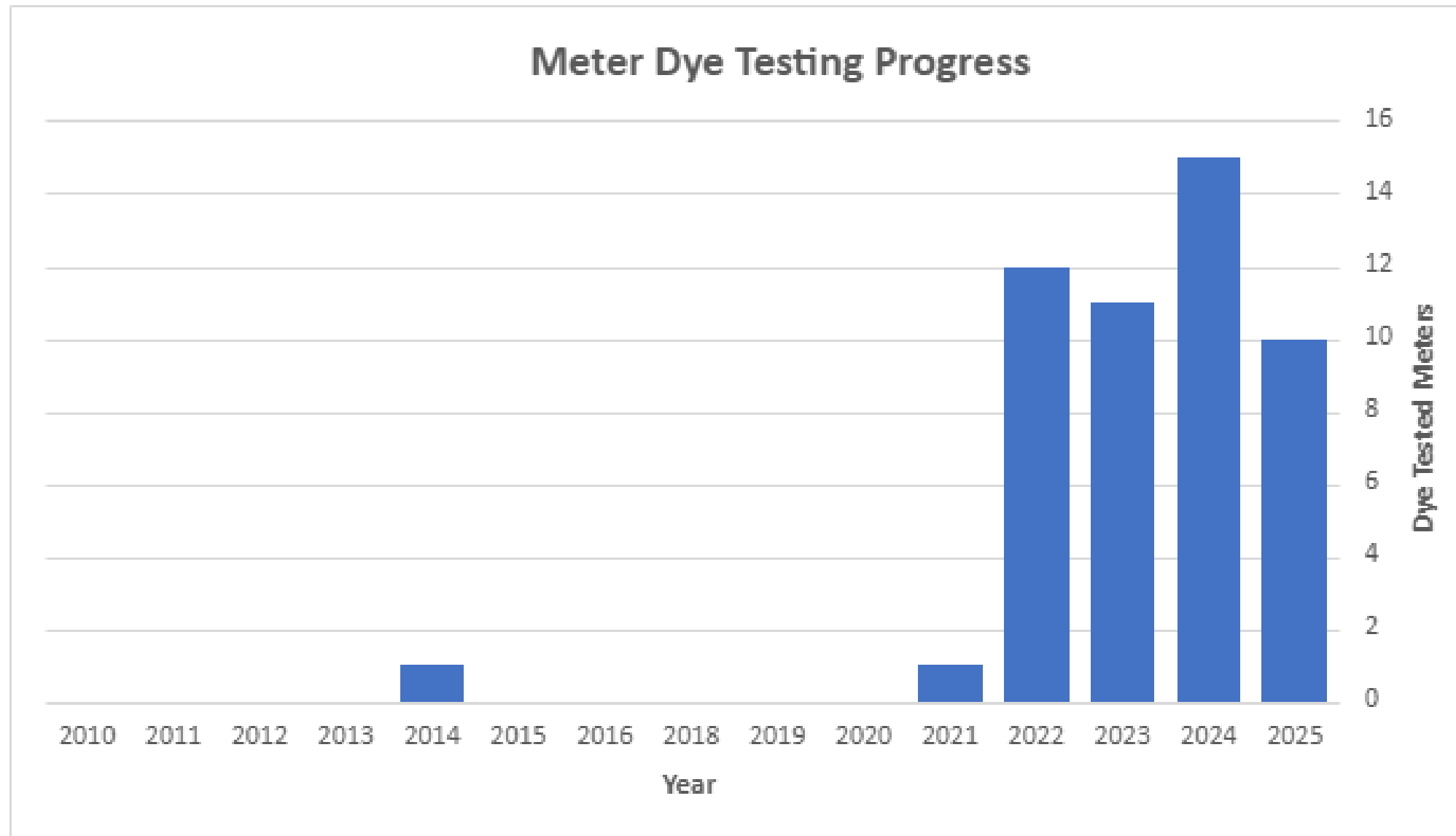
7029

Meter Program

Meter Program



Meter Dye Testing Progress

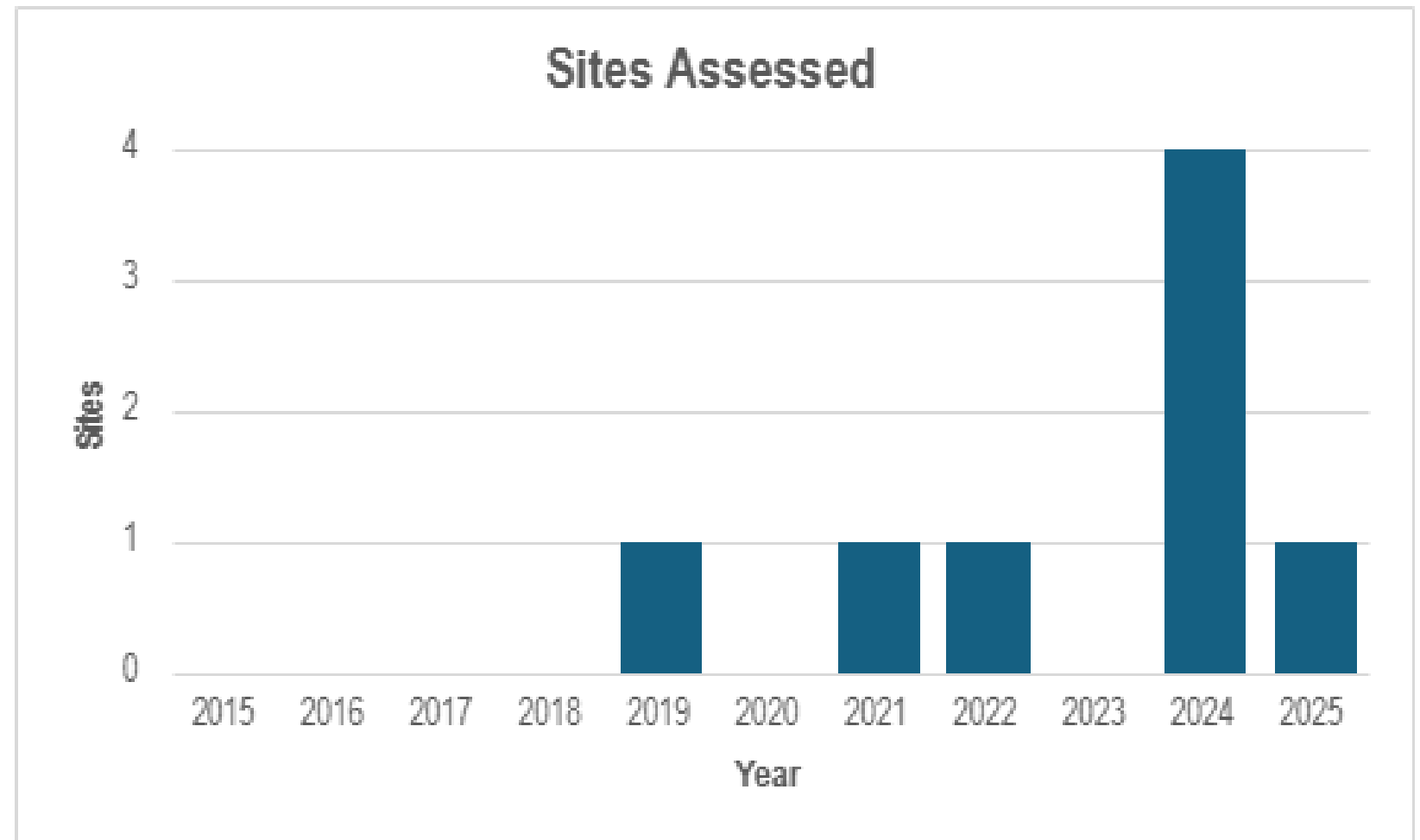


Odor Control Program

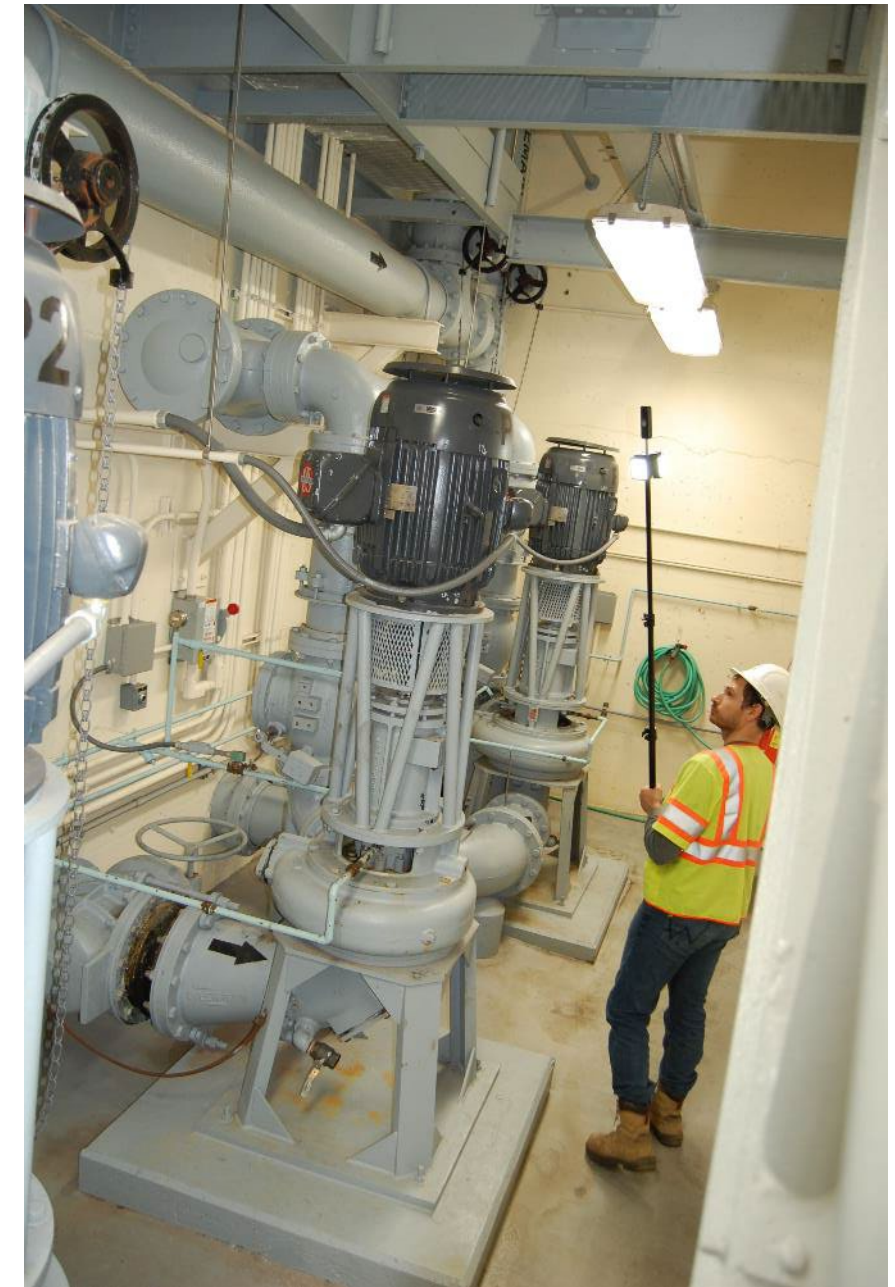
Odor Control Program



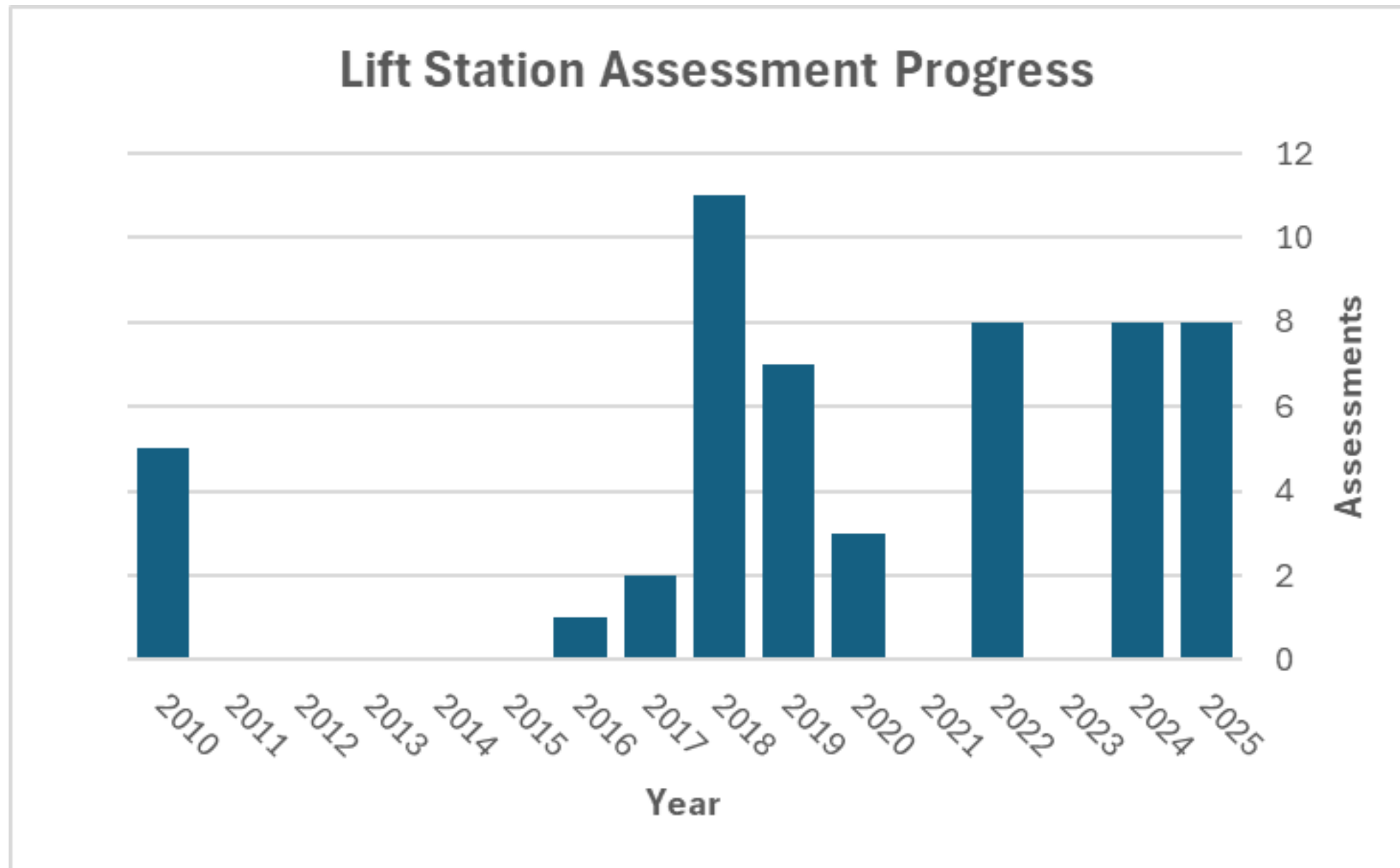
Odor Assessment Progress



Lift Station Assessment Program



Lift Station Assessment Progress



Pipeline Assessment Programs

- Gravity Interceptor Program
- Siphon, River Crossing, and Forcemain Program
- Cathodic Protection Program



Best Practices for Inspection Interval

Inspection Interval (Years)

| Condition Rating | Concrete, DIP Pipe | Corrosion Resistant Pipe (RPMP/HDPE/CIPP/PVC) |
|------------------|----------------------|---|
| 1 | 10 | 15 |
| 2 | 10 | 15 |
| 3 | 10 | 15 |
| 4 | 5 | 5 |
| 5 | Rehabilitate/Replace | Rehabilitate/Replace |

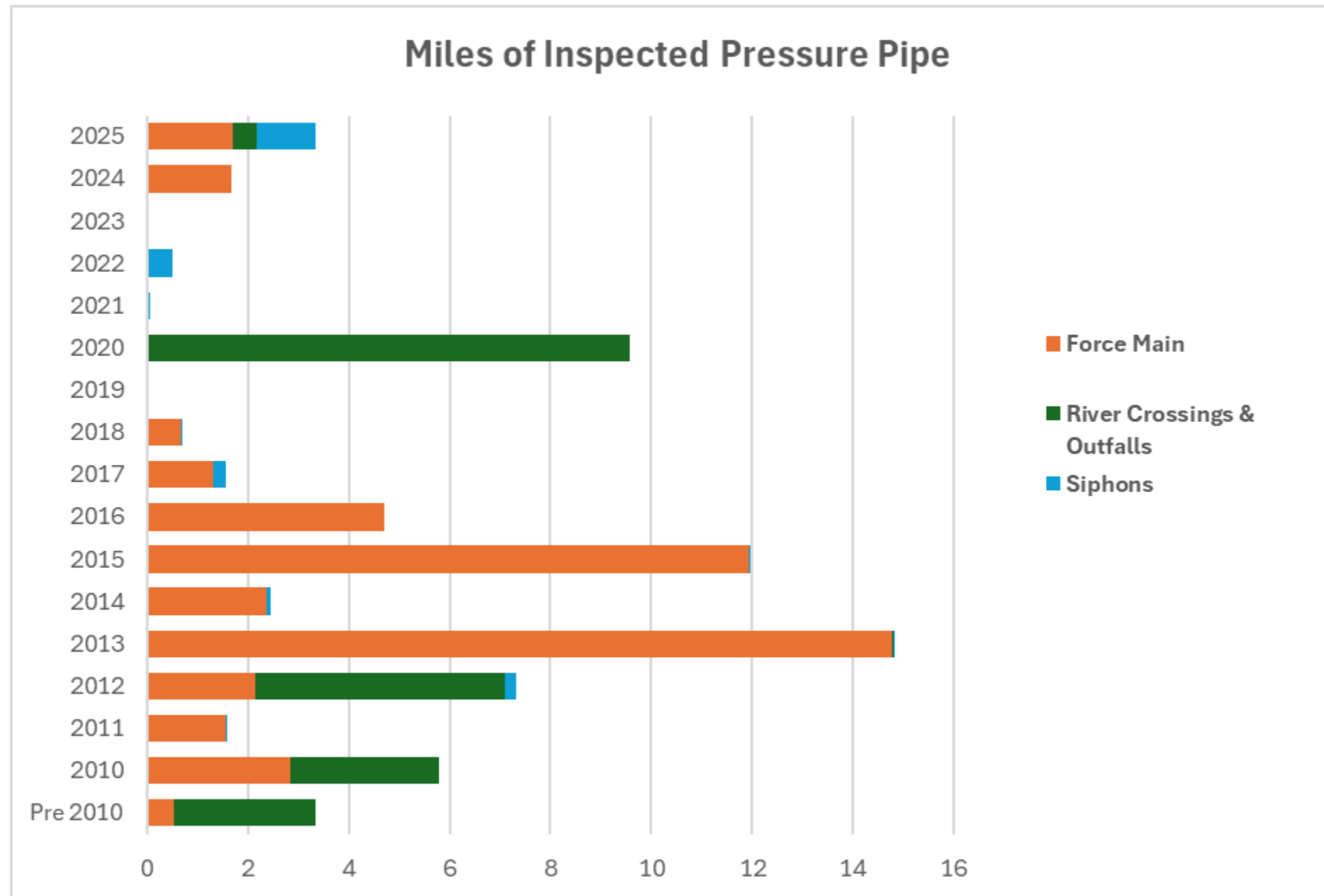
Siphon, River Crossing, and Forcemain Program



- Pressure Pipe
- Cathodic Protection Programs



Pressure Pipe Assessment Progress

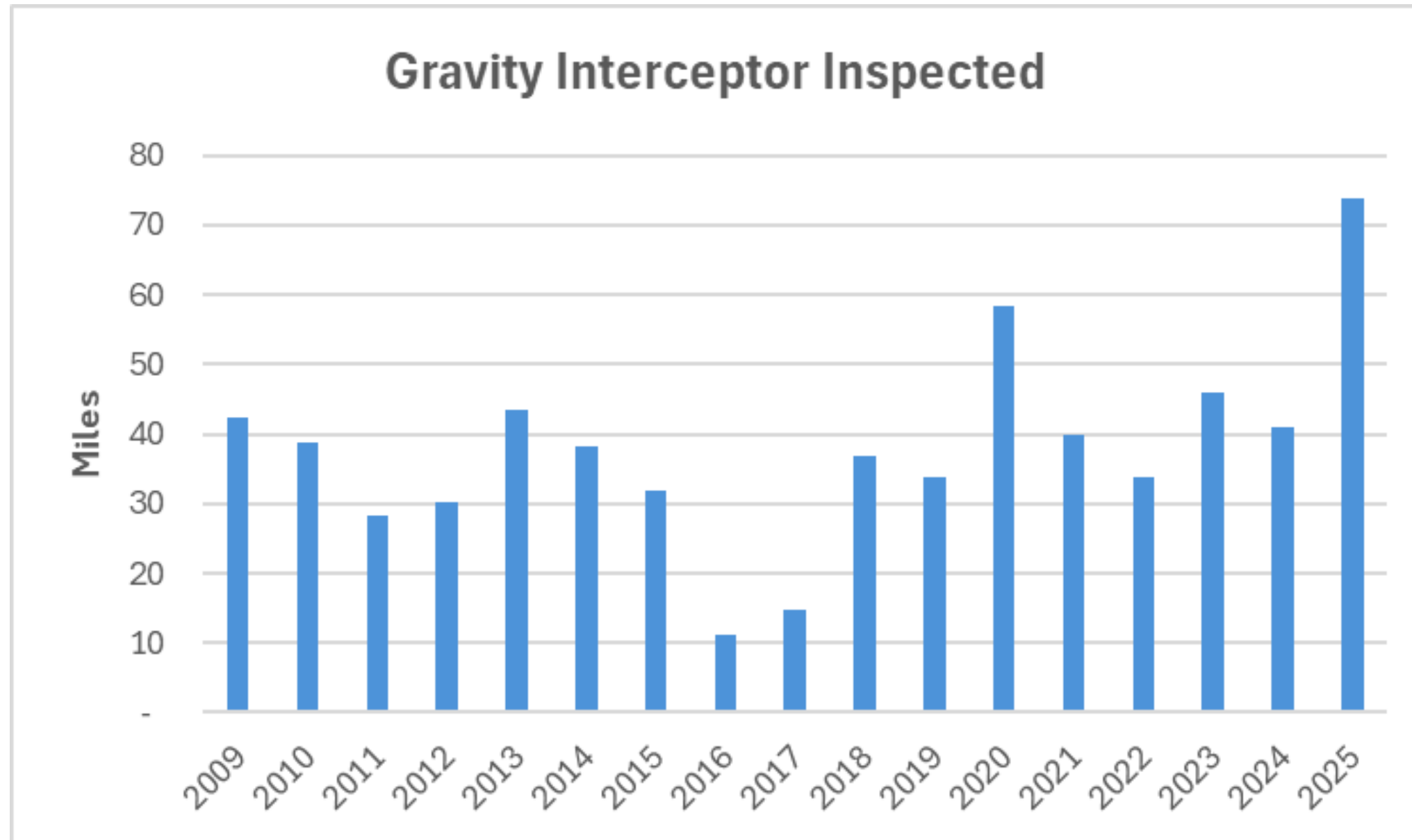


Gravity Interceptor Program

- Gravity Interceptor Pipe
- Maintenance Holes



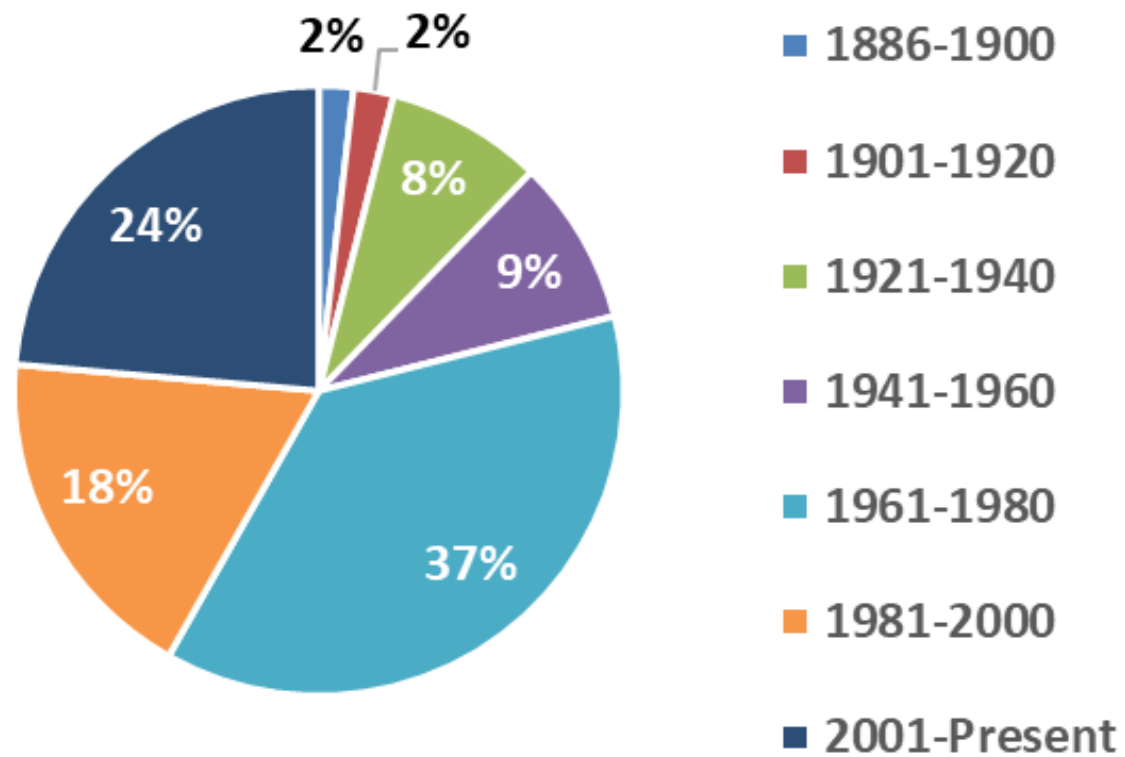
Gravity Sewer Inspection Progress



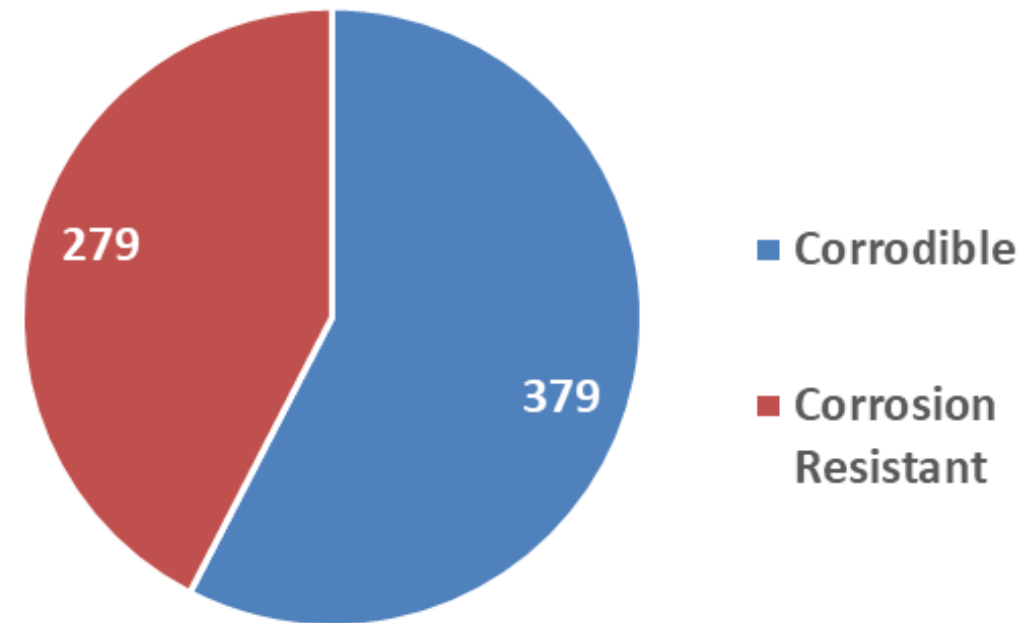
Gravity Interceptor Assessment Programs - Progress

Current System Makeup

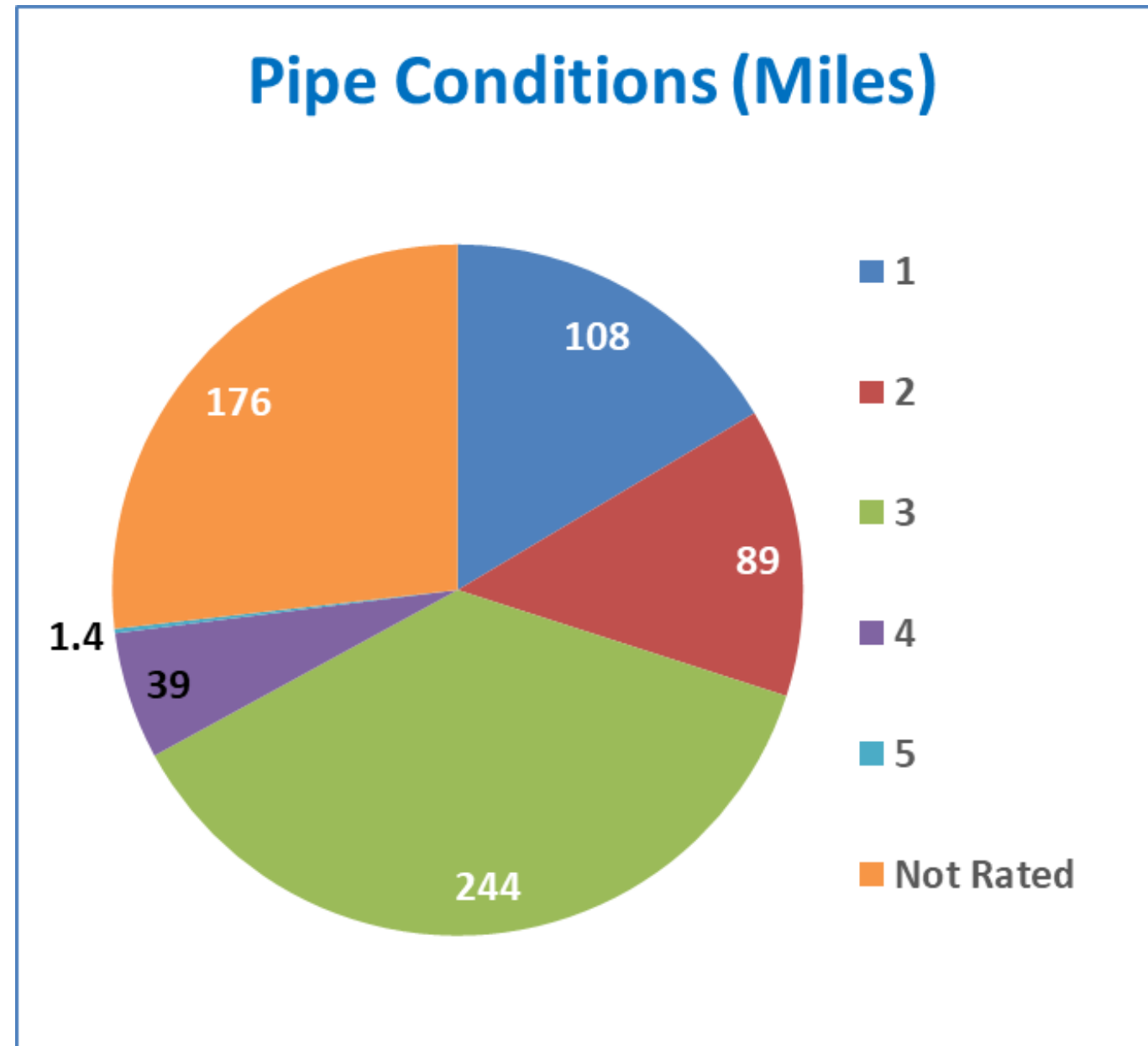
Age of Interceptors



Pipe Materials (Miles)

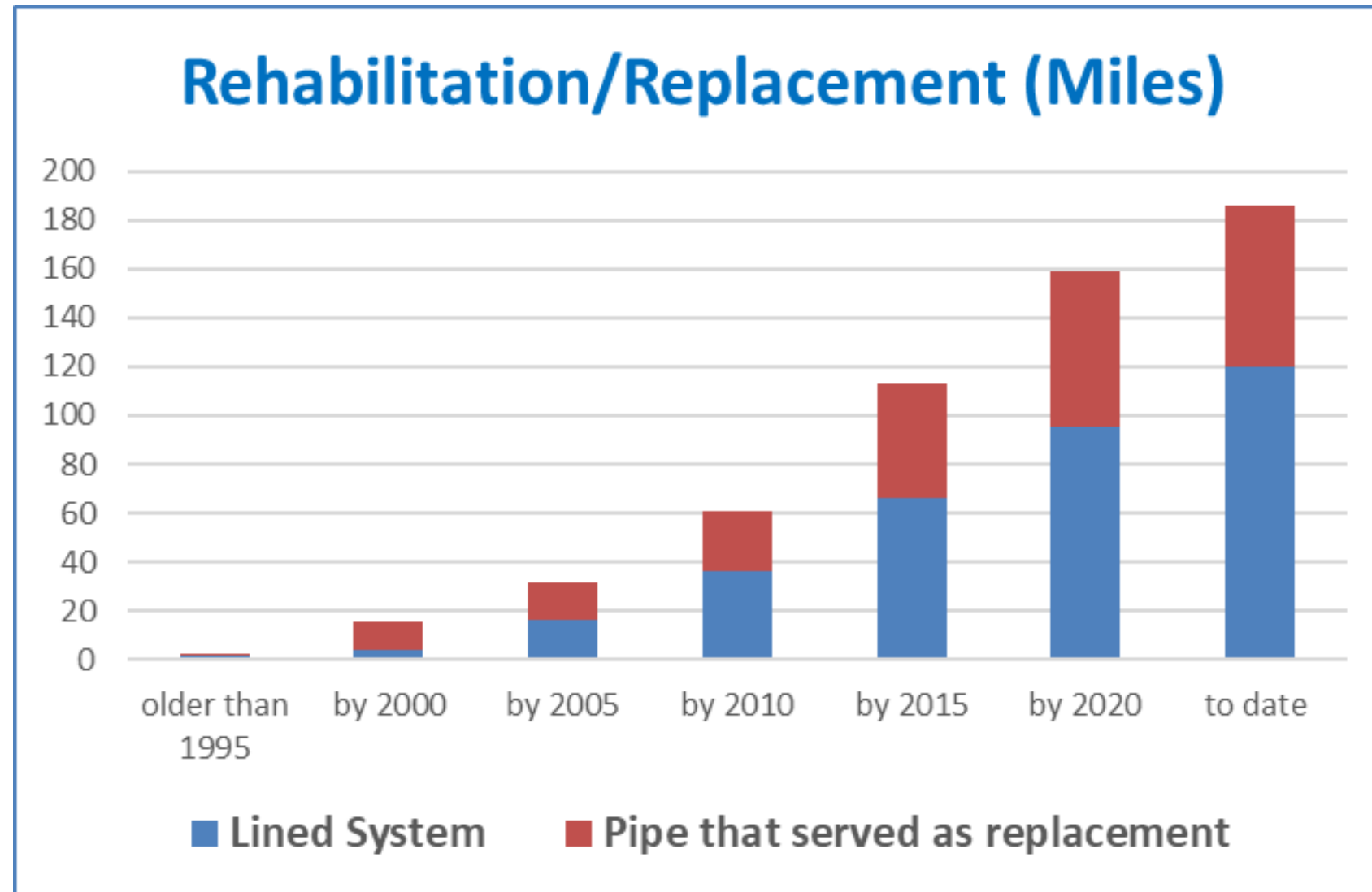


Condition Assessment Programs - Progress



Condition Assessment Programs – Progress

25 Years of progress



Questions?

Adam Gordon

Manager

Interceptor Engineering

651-602-4503

adam.gordon@metc.state.mn.us

