

Introducing Environmental Services

Presented by:

Leisa Thompson, General Manager, Environmental Services

Ned Smith, Director, MCES Finance and Revenue

Bryce Pickart, Assistant General Manager, Technical Services

Jeannine Clancy, Manager, Community Programs

Equity Advisory Committee, August 16, 2016



10,000 REASONS WHY

*Because we
live in the
best of all
environments.*



Photography by Sri Dhanush Kabara



© 2010 MINNESOTA ENVIRONMENTAL FUND

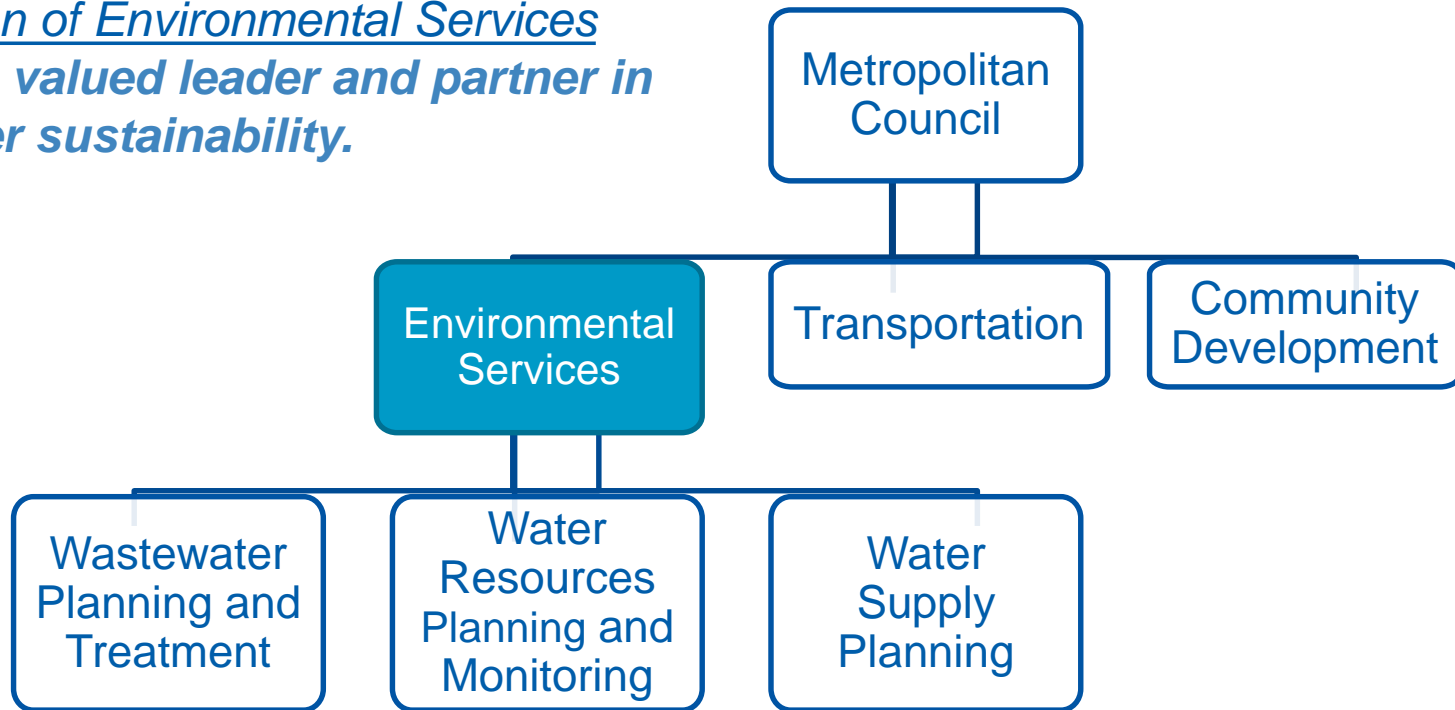


Choose to help the environment. It adds up.

www.mnenvirofund.org



Vision of Environmental Services
Be a valued leader and partner in water sustainability.



Mission of Environmental Services
Provide wastewater services and integrated planning to ensure sustainable water quality and water supply for the region.

Regional Wastewater System

2,700,000 People Served

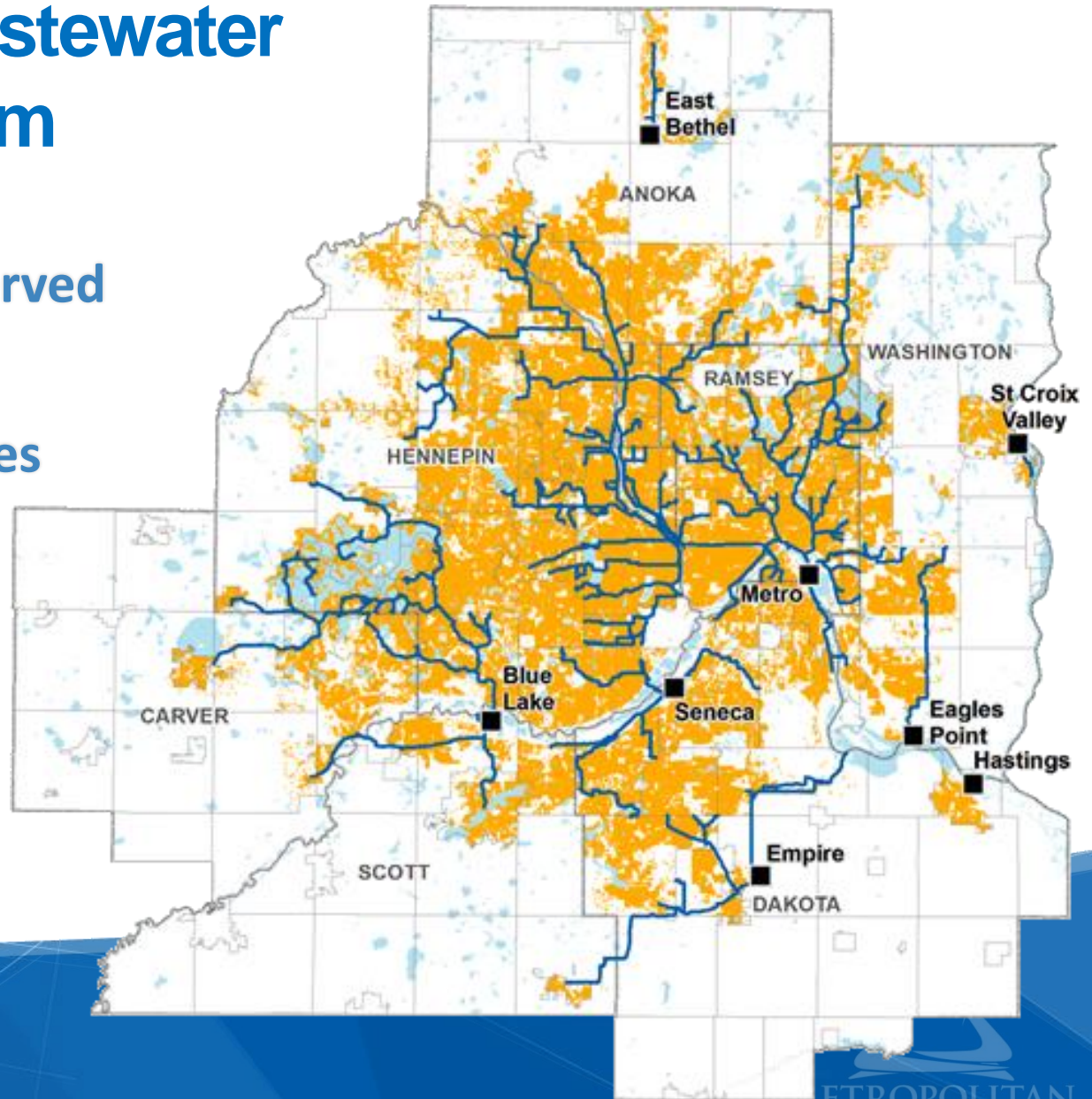
108 Communities

610 Miles of Pipelines

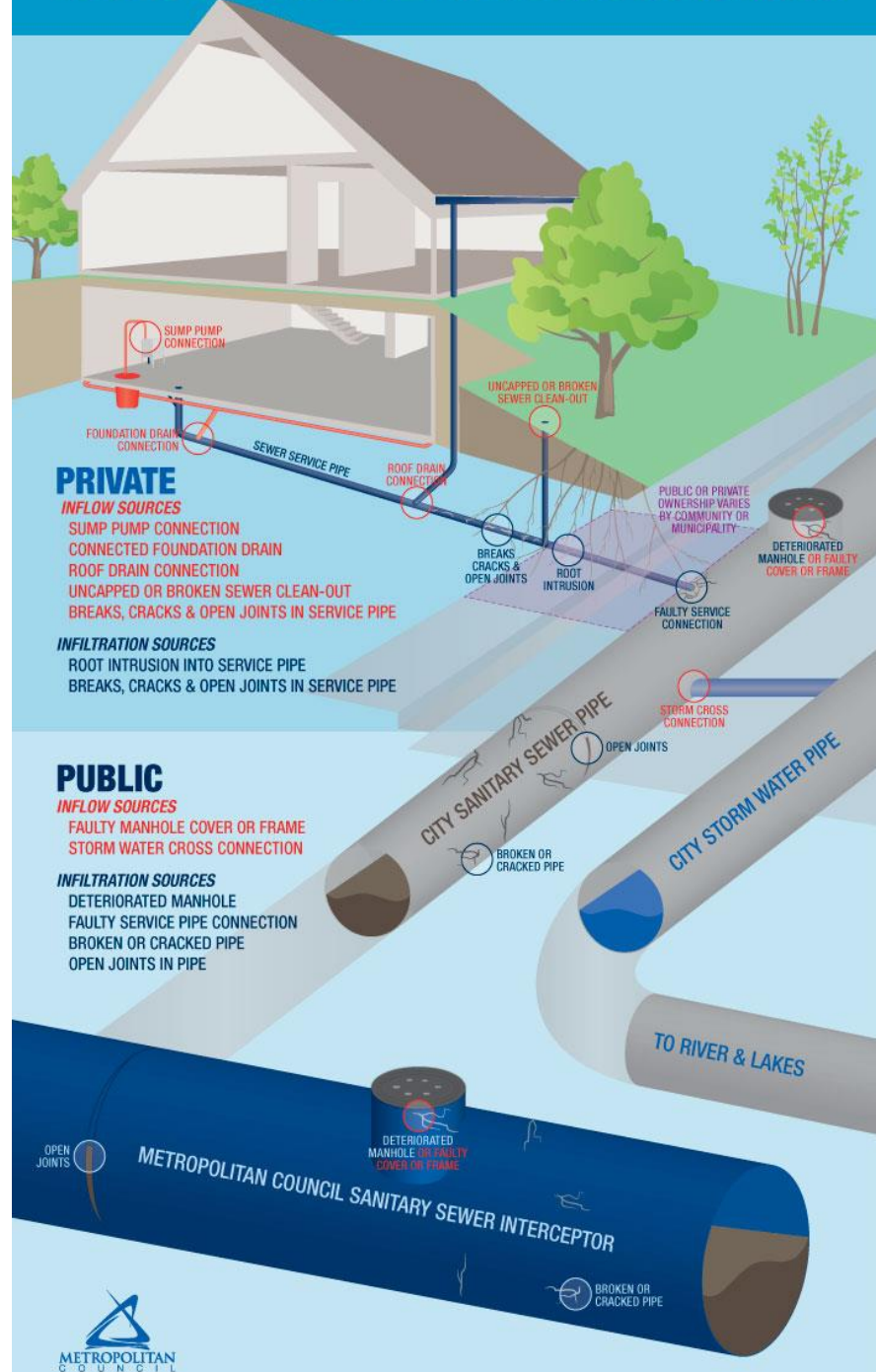
60 Pump Stations

8 Treatment Plants

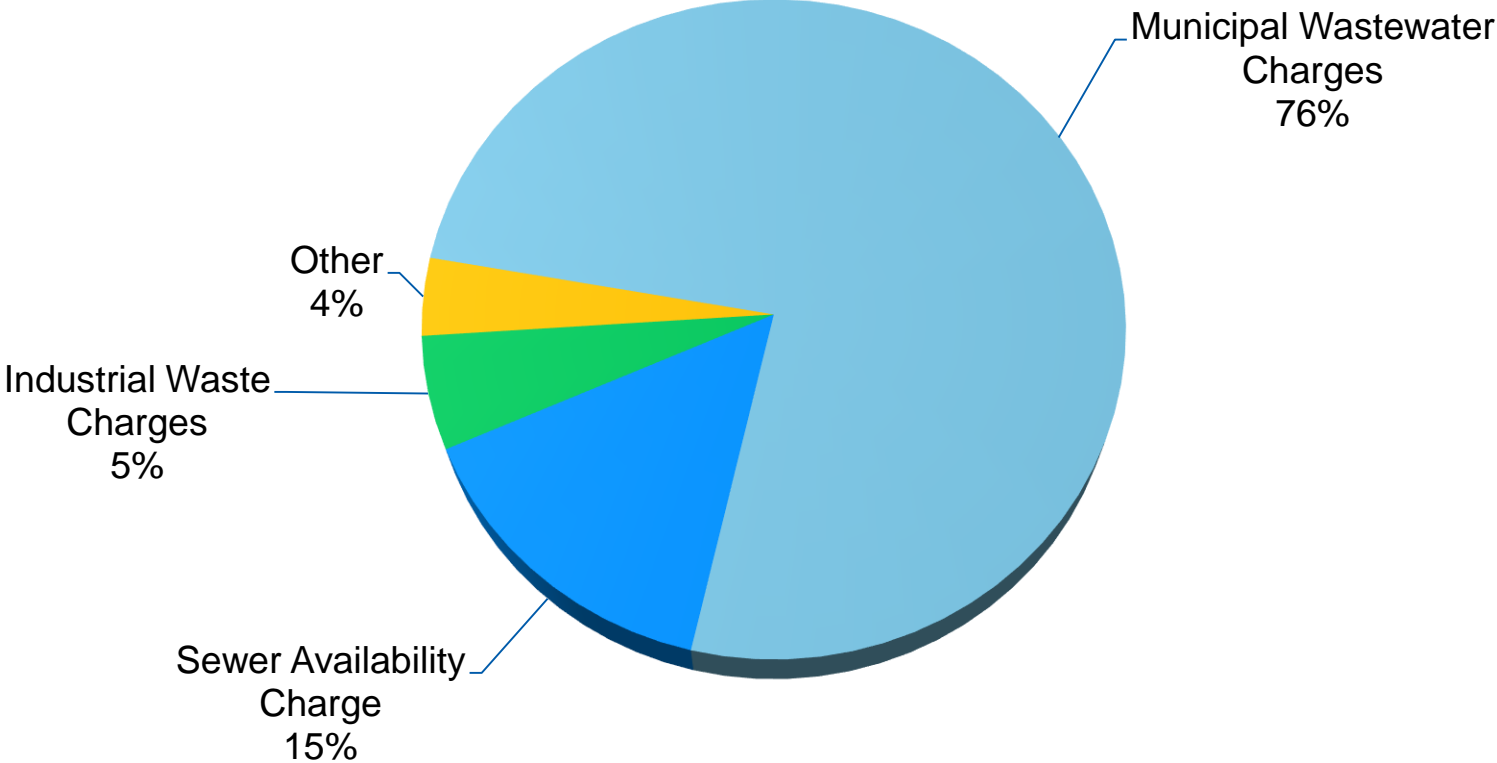
- MCES Wastewater Treatment Plants
- Interceptors



Ownership of Wastewater Collection System



Fee for Service

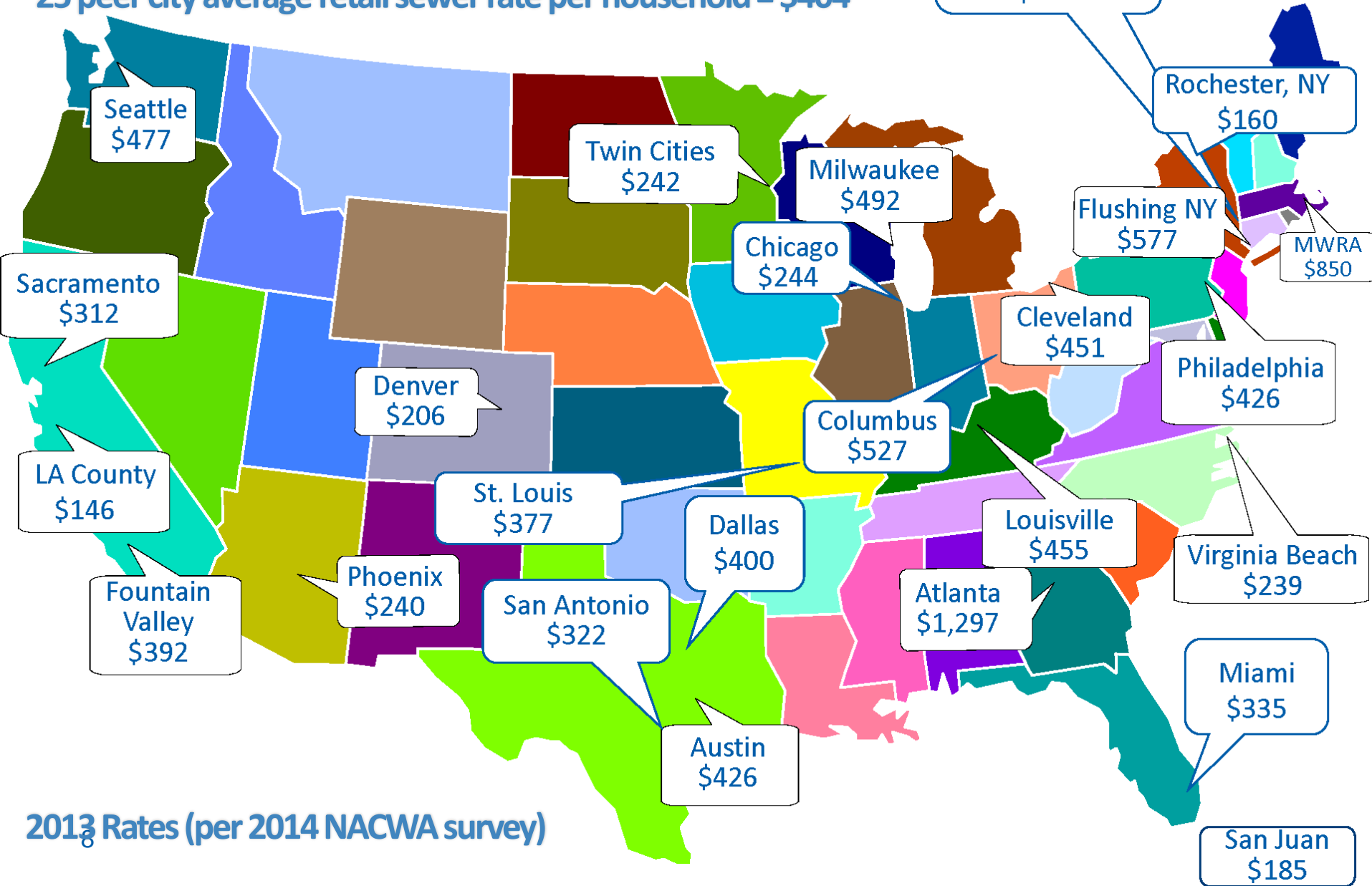


Municipal Wastewater Charge

- Environmental Services charges communities a wholesale fee
 - Communities pay portion of municipal wastewater charges corresponding to their percent of total flow
- Communities charge businesses and residents a retail fee for sewer service

Rate Comparison

25 peer city average retail sewer rate per household = \$404



2013 Rates (per 2014 NACWA survey)

Sewer Availability Charge (SAC)

- Charged to municipalities (wholesale)
- For new connections or increased capacity demand
- Pays for a portion of debt service

There are options to ease the SAC burden, including SAC deferral program

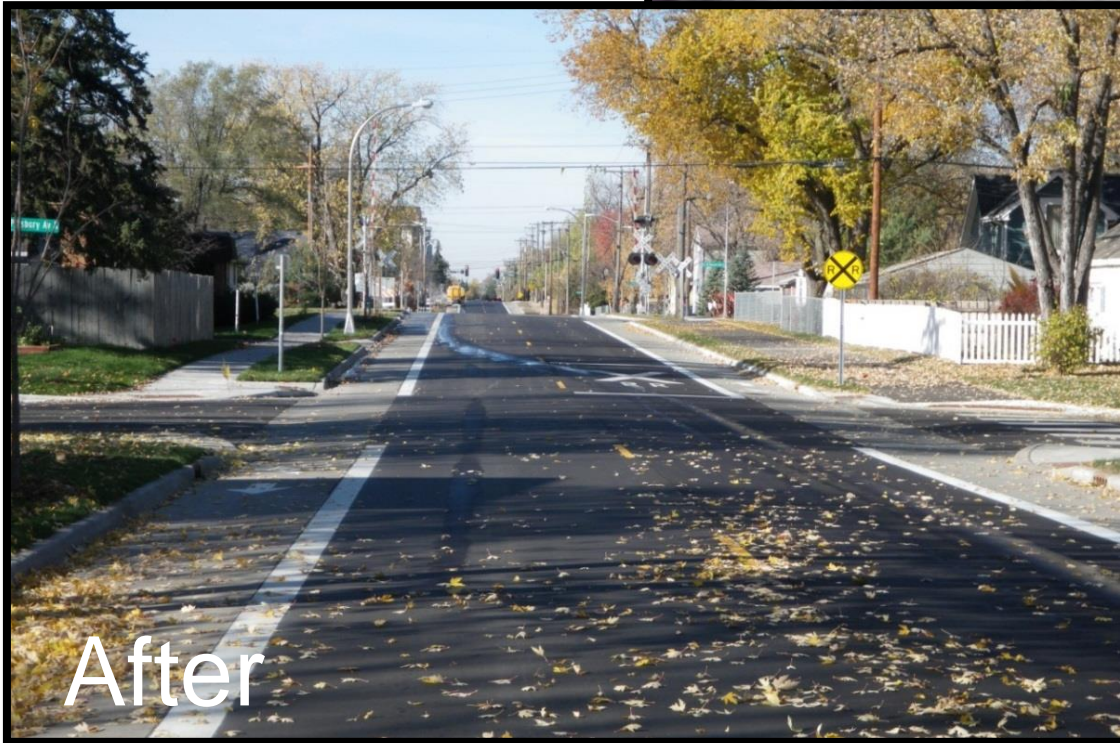









Before



After



**How do we
reduce resident
impacts and
improve project
delivery?**

Public Notifications and Meetings



What's happening in your area



- 1 In order to tunnel underneath Highway 13, Construction crews will establish two pits on each side of Highway 13 to insert the tunneling equipment
- 2 Crews will tunnel underneath Highway 13, which will not disrupt traffic.
- 3 An approximately 60 foot wide, 20 foot deep trench across the Highway 13 Frontage Road will be excavated to begin installing the new sewer pipe. This will close Frontage Road to through traffic.

 Highway 13's Frontage Road will be closed for approximately two weeks in late October or early November.

Weekly Web Site Updates



MCES is repairing old or damaged sewer pipes in your area. We understand some of the construction may be a temporary inconvenience and we appreciate your patience.

Bloomington Area
Regional Sewer
Improvements

90th St. E.

Sewer Improvement Work in Your Area

The sewer repair process usually requires two days of non-stop work for each segment of liner that is being installed. Once this process is started, we cannot stop it until it is completed.

How will installing the new liner affect me?

- 24-hour operations during portions of the project.
- Lights, dust, and some noise from pumps, generators, and construction equipment.
- There may be a resin smell from the hardening of the new sewer liner.
- There may be potential for some sewer odor.
- Temporary road closures.

We also encourage property owners to make sure there is water in all of the drain traps on their property. This helps contain odors in underground pipes.



Large equipment is needed to insert liners into manholes and sewers.

Will my sewer be impacted during construction?

Some property owners will have their sewer shut off for approximately 48 hours during the repair process. Properties with sewer disruption will be notified by letter and door hangers in advance of construction.

Direct Mailings and Door Hangers

Fridley Area Regional Sewer Improvements Project Land Preparation Activities

On Aug. 24, crews for the Fridley Area Regional Sewer Improvements Project will begin land preparation activities near 69th Avenue and Hickory Circle. Activities will include clearing of trees and shrubs within the construction limits. Crews will only remove trees/shrubs that may impact work on the sanitary sewer pipe.

If you have any personal belongings (i.e. fire pits, plants, etc.) very near to or in the construction limits, please ensure they are removed before Aug. 24. These limits have been staked to give an indication of what items lie within the construction limits of public property. Crews will remove any remaining items on public property after Aug. 24.

Work to clear this area will continue for 2-3 weeks. However, after the area is cleared, it will remain an active construction zone through the fall of 2016. For your safety, please stay clear of sewer repair areas and equipment.

Thank you for your cooperation during this project.

Stay informed about construction:

Project Website: www.metrocouncil.org/sewerconstruction/fridley

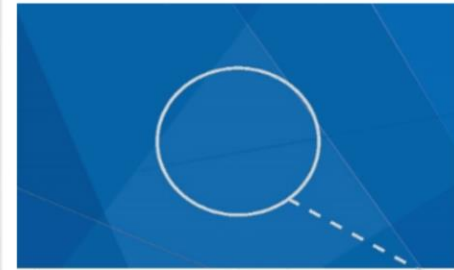
Project Contacts:

- Tim O'Donnell, project citizens liaison
651-602-1269 or tim.odonnell@metc.state.mn.us
- Steve Vogl, construction contract manager
651-602-8916 or steve.vogl@metc.state.mn.us
- Jeff Schwarz, project manager
651-602-8921 or jeffrey.schwarz@metc.state.mn.us



Email Updates: For more project information and to sign up for project email updates, visit the project website at www.metrocouncil.org/sewerconstruction/fridley

390 Robert Street North | St. Paul, MN 55101-1805
Phone 651.602.1000 | Fax 651.602.1550 | TTY 651.291.0904 | metrocouncil.org
An Equal Opportunity Employer



We'd Like to Keep You Informed

SEWER IMPROVEMENT CONSTRUCTION
SCHEDULED THIS WEEK IN YOUR AREA.

Installation of a new sewer liner will occur in your area starting:

How will installing the new liner affect me?

- 24-hour operations during portions of the project.
- Lights, dust, and some noise from pumps, generators, and construction equipment.
- There may be a resin smell from the hardening of the new sewer liner.
- There may be potential for some sewer odor.
- Temporary road closures.

Contact us anytime with questions or concerns

Phone: 952.224.4864, Option 1

Email: info@bloomingtonsewer-90steast.com

For more information about the project

Additional information about the Bloomington Area Regional Sewer Improvement - 90 St. E. project is available and will be updated periodically on our website:

www.metrocouncil.org/sewerconstruction/bloomington

Metropolitan Council Environmental Services (MCES), operator of the metro-area wastewater collection and treatment system, is making improvements to aging and deteriorating regional sanitary sewer facilities that serve homes and businesses in the City of Bloomington.



Phalen Rehabilitation Project



Hais Txog Phalen Rehabilitation Project

Metropolitan Council Services (MCES) uas yog lub kooshaum los mus tswj tuav saib rau tej dej uas neeg siv tag nrog rau tej kav phajdej, yuav los mus txhimkho rau tej kavdej thiab tej chaw teev dej uas xa dej tuaj mus rau tej vajsev, chaw lagluam thiab chaw ua si thiab tuaj mus rau lub chaw ua si hu ua Payne Phalen rau hauv nroog St. Paul. Txoj kev hlov kho zaum no nws yuav tsismuaj nqi rau koj txawm yuav tuaj kho thiab ntsuas sab.

Kev Ua haujlwm rau hauv ibcheeb tсам pejxeem nyob

Sijhawm thiab Thajtsam Chaw Yuav Kho

Haujlwm yuav piv rau thaum lub 10-hli ntuj 2016 mus bog rau lub 11-hi ntuj 2017.

Ohov kev yuav bhimkho no yog yuav kho los ntawm qaum Phalem lub chaw ntau Golf los mus bog ntawm puag nram qab boj kev Maryland Avenue uas yog los ze rau boj kev Wheelock thiab Johnson Parkway. Ohov no yog ibqho ntawm boj kev Johnson Parkway uas twb tau kho ibzaug dhau los lawm thaum lub 2014 thiab 2015.

Thov nrog saib daim MAP kom thiab paub tias chov kev bhimkho no nws yuav kho rau thajtsam twg.

Tswj Kev Mus Los thiab Cov Kev Yuav Nkag Mus Rau Tej Chaw Ua si

Tej thaum yuav muaj kev kaw boj kev Wheelock Parkway thaum lub sijhawm yuav bhimkho. Yuav muaj kev qhia tias yuav tsavtshab mus lica rau ntawm boj kev Maryland Avenue thiab Arcade Street.

Kev yuav nkag mus rau hauv lub chaw ua si Phalen Park thiab Phalen Recreation Center yeej yuav muaj kev tswj yuav nkag thiab yuav tawm.

Kom Tej Dej thiab Ub No Kom Muaj Txawm Rau Koj Siv

Tej dej qias uas tsissiv lawm yuav muab tswj kom muaj chaw mus los thaum tseem bhimkho.

Yuav muaj cov kav phajdej yuav no dej tawm los mus rau suavdaws tau siv raw boj kev Arcade Street thiab Wheelock Parkway. Yuav muaj 3-tug kav phajdej yaas yuav khiaiv raws kev thiab koj yuav pom thiab yuav muaj neeg saib bhua hnub ntawm boj kev bhimkho los ntawm lub kooshaum MCES cov neeg ua haujlwm.

Yog muaj lus nug, hu rau John Chlebeck nrog rau lub kooshaum Metropolitan Council ntawm.

john.chlebeck@metc.state.mn.us 651-602-4527 www.metrocouncil.org



About the Phalen Rehabilitation Project

Metropolitan Council Environmental Services (MCES), operator of the metro-area wastewater collection and treatment system, is making improvements to aging and deteriorating regional sanitary sewer facilities that serve homes, businesses and parks and recreation facilities in the Payne Phalen neighborhood of Saint Paul. There are no direct costs or special assessments to residents for this work.

Working in the Neighborhood

Timeline and project area

Work is scheduled to take place from October 2016 to November 2017.

The project area extends from the northern edge of Phalen Golf Course to south of Maryland Avenue, near Wheelock and Johnson parkways. This is the same area of Johnson Parkway where emergency repairs were completed in 2014 and 2015.

Please look at the project map for more detailed information about the project area.

Maintaining road and park access

There will be periodic road closures on Wheelock Parkway throughout the project. The detour route will be Maryland Avenue and Arcade Street.

Access to Phalen Park and Phalen Recreation Center will be maintained at all times.

Maintaining your services

Wastewater services will be maintained throughout the project.

Temporary wastewater conveyance pipes will run along Arcade Street and Wheelock Parkway. Three black plastic pipes will be visible, and monitored all day, every day, by MCES staff.



For more information you can call or email John Chlebeck with the Metropolitan Council.

john.chlebeck@metc.state.mn.us 651-602-4527 www.metrocouncil.org

Environmental Justice

Environmental Justice Framework
2015 – 2018



Everyone benefits from the same degree of environmental protection and has equal access to the decision-making processes that contribute to a healthy environment.



Minnesota Pollution Control Agency

December 17, 2015

Future Conversations

- Sewer Availability Charge (SAC)
- Regional Private Property I/I Mitigation
- Metropolitan Plant Solids Processing
- Interceptor Rehabilitation Program
- Other Interests of the Equity Advisory Committee