

Community Development Division Overview

Metropolitan Council Equity Advisory Committee

June 21, 2016



Community Development Division Overview

Today:

- What we Do and Why
- How We are Organized
- Key Programs and Initiatives

What We Do – Why and How

- Metropolitan Council - Created in 1967 by Minnesota Legislature
 - To plan for the efficient growth of the seven–county area
 - To coordinate the delivery of services that couldn't be provided efficiently by any one city or county
- Why?
 - Educated mobile workforce can choose to live anywhere
 - Successful regions attract skilled workers by providing high quality of life

What We Do - Why and How

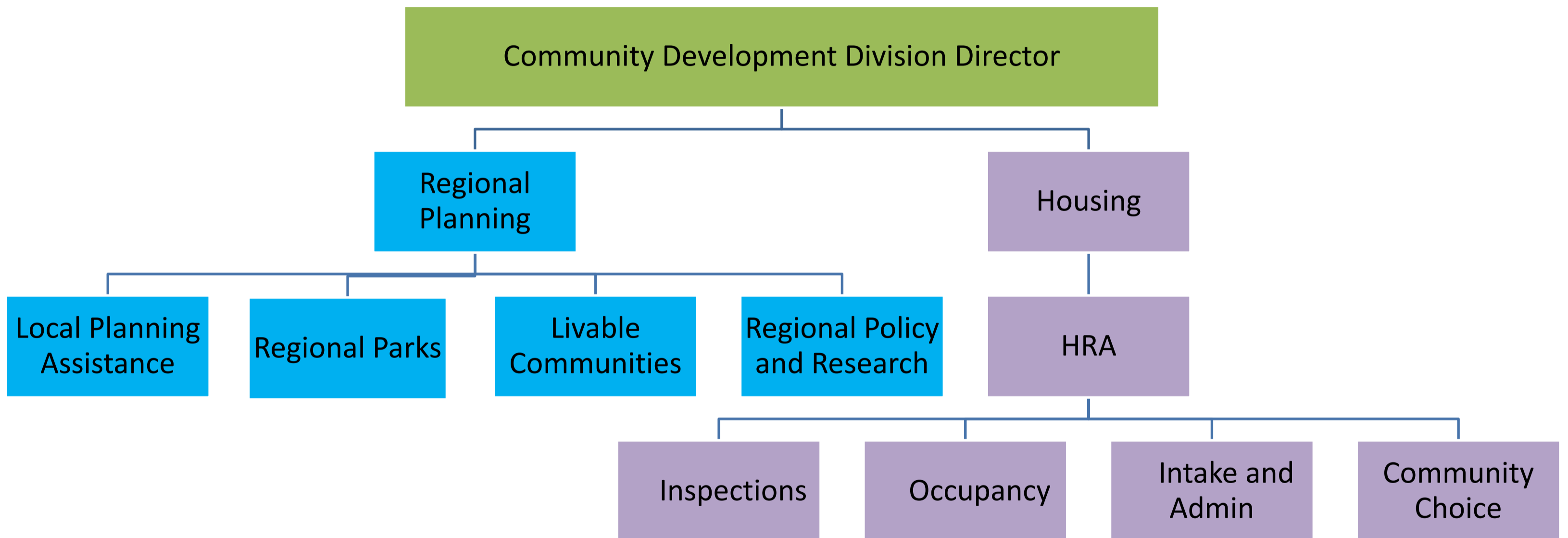
Created to address:

- Rapid, unplanned growth
- Threatened open spaces
- Water pollution
- Deteriorating bus system

What We Do - Why and How

- Governmental units within metropolitan area – interdependent, transcend city boundaries
- Growth and patterns of urbanization:
 - increase the danger of air and water pollution, water shortages, water shortages,
 - developments in one area impact regional capital improvements – sewer, transportation, airports, water supply, regional recreation open space
 - need local comprehensive planning to be coordinated and consistent with Metropolitan-wide planning/systems
- Metropolitan Land Planning Act - 1976

How the Community Development Division is Organized



What We Do - Why and How

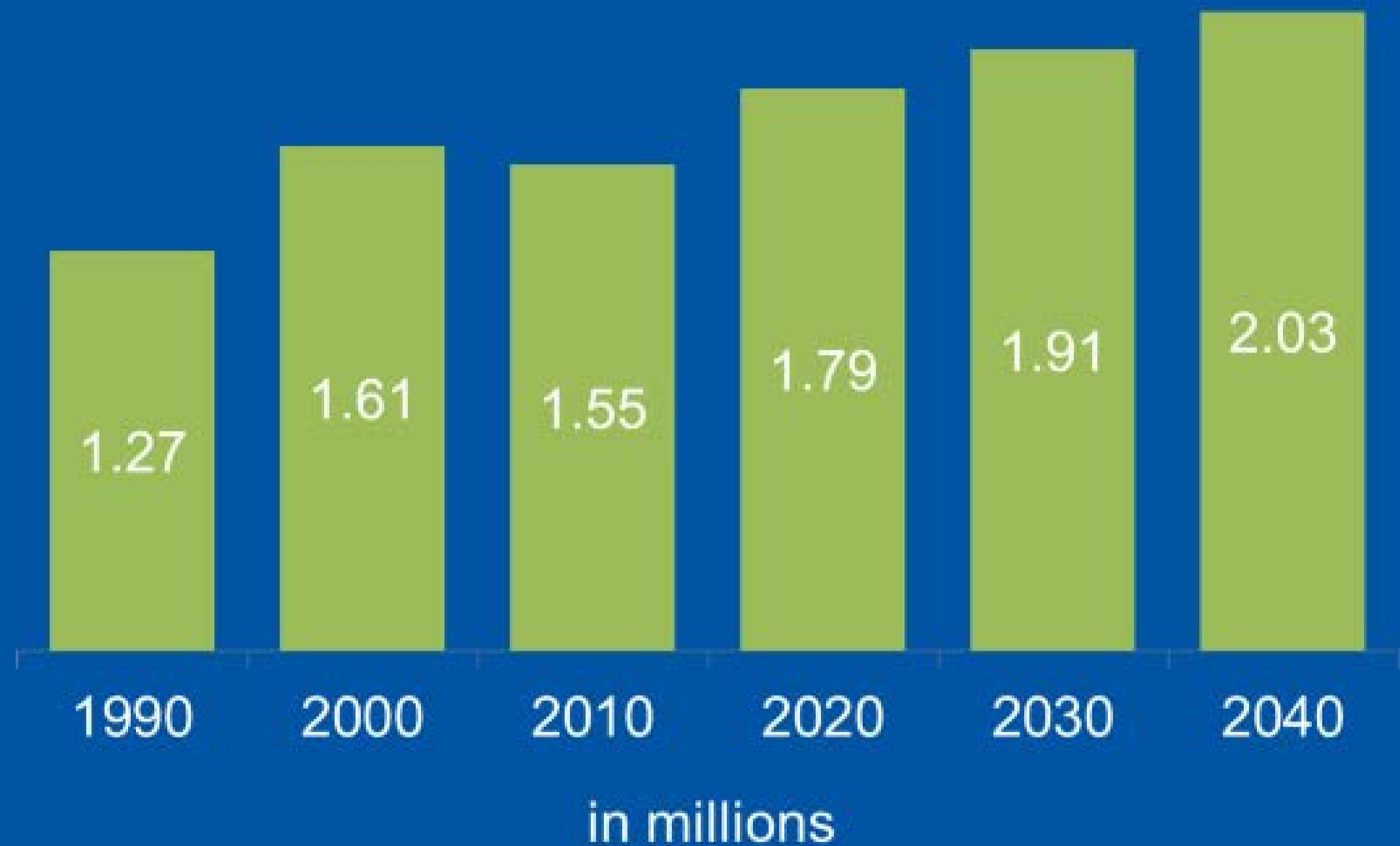
- Local Comprehensive Planning and Metropolitan System Planning - 30 year horizon, 10 year cycle
- Planning based on Council forecasts for:
 - Jobs
 - People
 - Households
 - Needs for affordable housing opportunities
 - Other Demographics

A diverse group of young students in a classroom, looking thoughtful and engaged. The students are of various ethnicities and are sitting at desks. The classroom is decorated with colorful streamers and educational posters. A semi-transparent white box is overlaid on the center of the image, containing the text.

**What will
2040 look
like?**

The region will continue to add jobs:

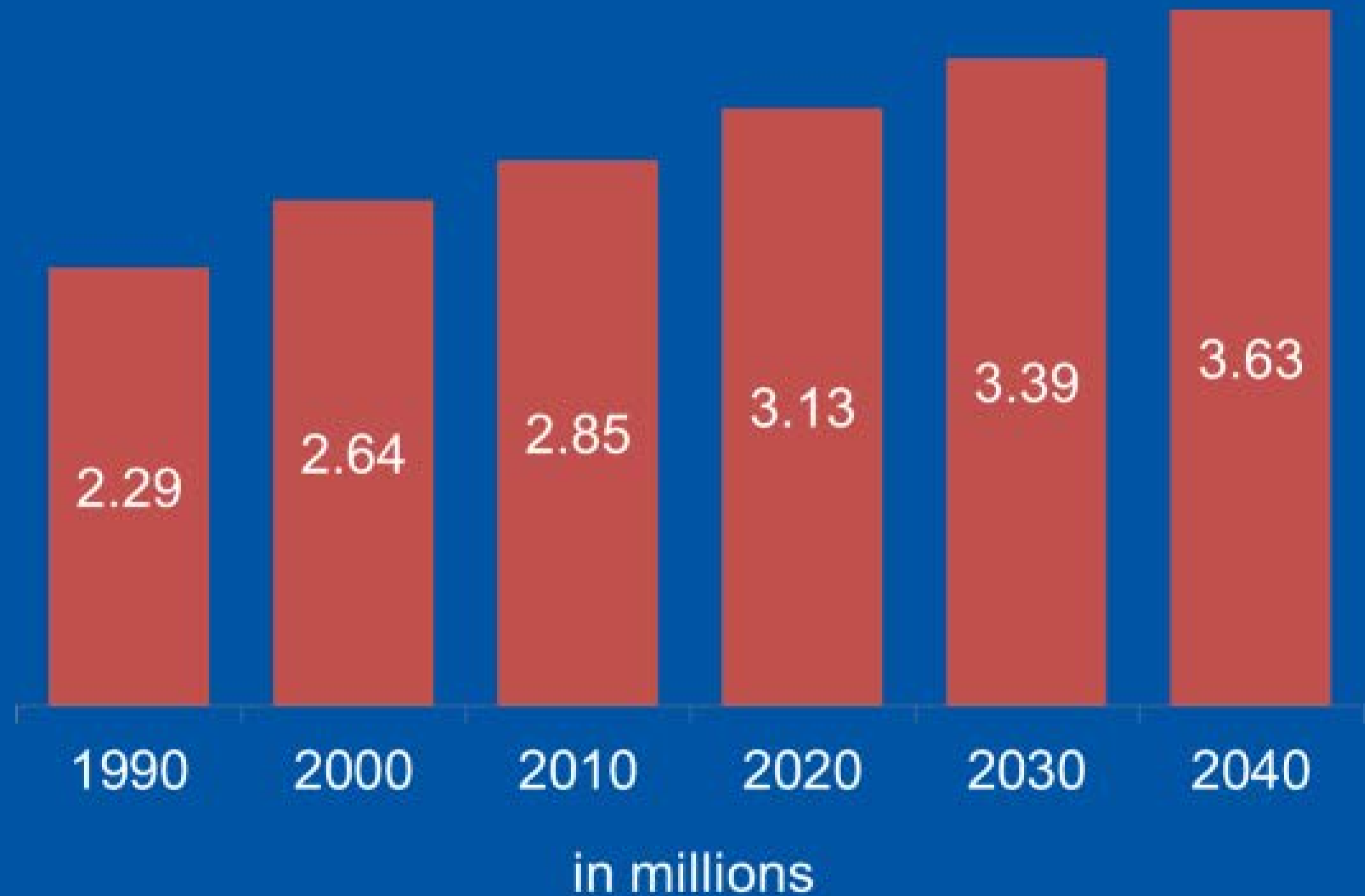
32
percent
growth
over the
next three
decades



Source: 2010 data on population from Census Bureau;
2040 forecasts from the Metropolitan Council (July 2015 release)

The region will continue to add people:

28
percent
growth
over the
next three
decades



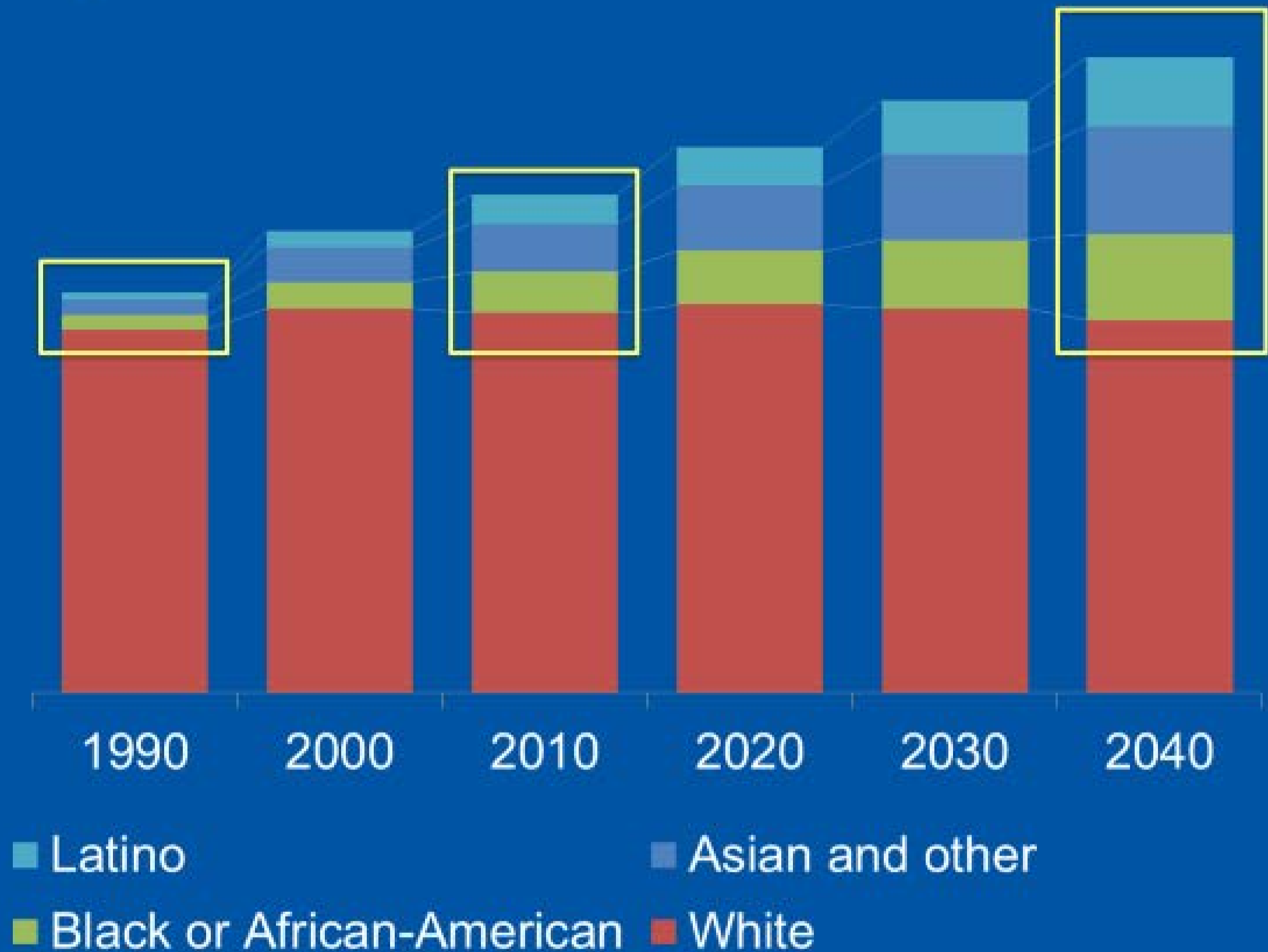
Source: 2010 data on population from Census Bureau;
2040 forecasts from the Metropolitan Council (July 2015 release)

More people of color!

9 percent
people of
color in 1990

24 percent
people of
color in 2010

41 percent
people of
color in 2040



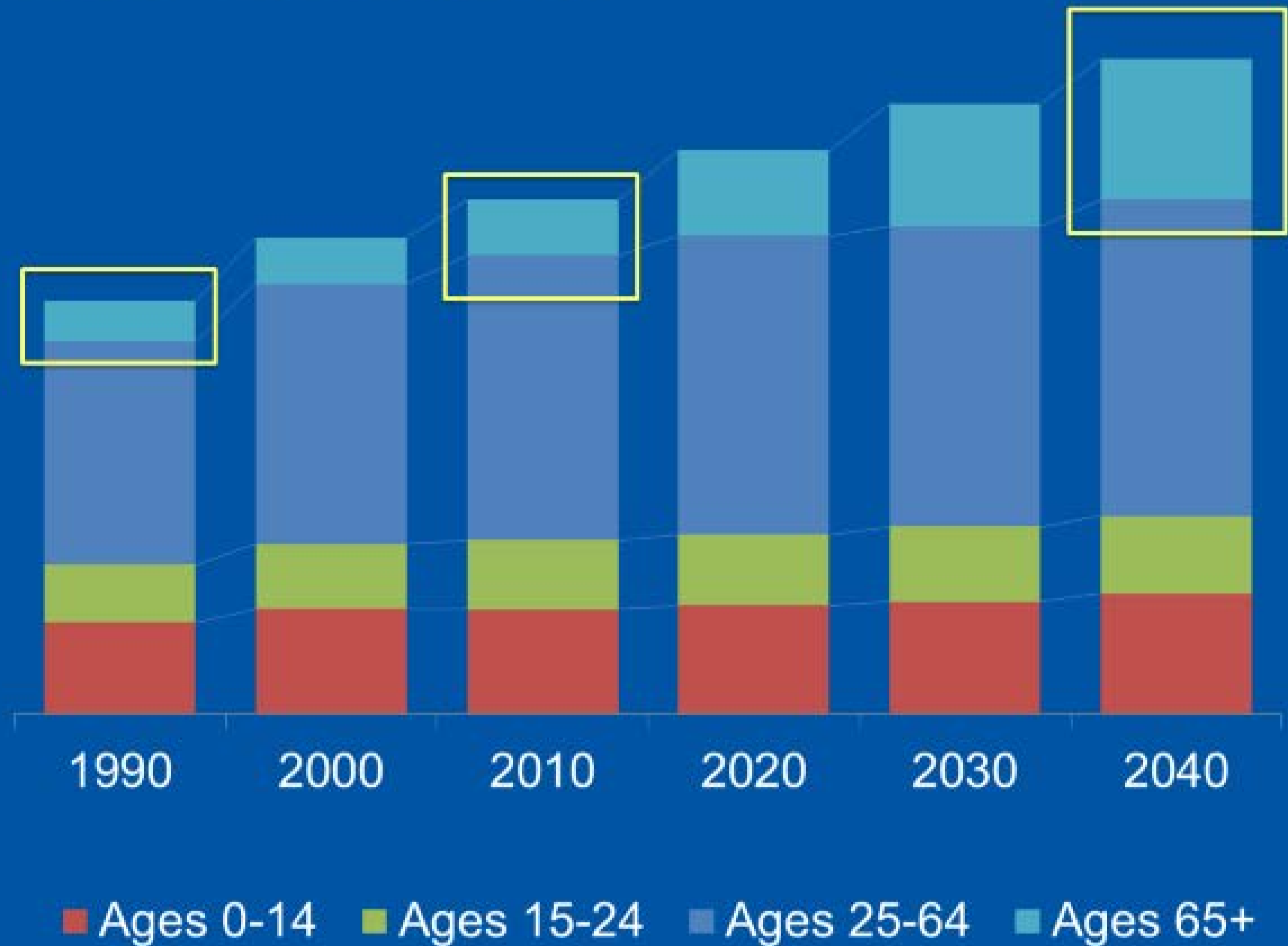
Source: 1990-2010 data on population from Census Bureau;
2040 forecasts from the Metropolitan Council (March 2015 release)

More older adults!

One in ten
in 1990

One in nine
in 2010

*One in five
people in
2040*



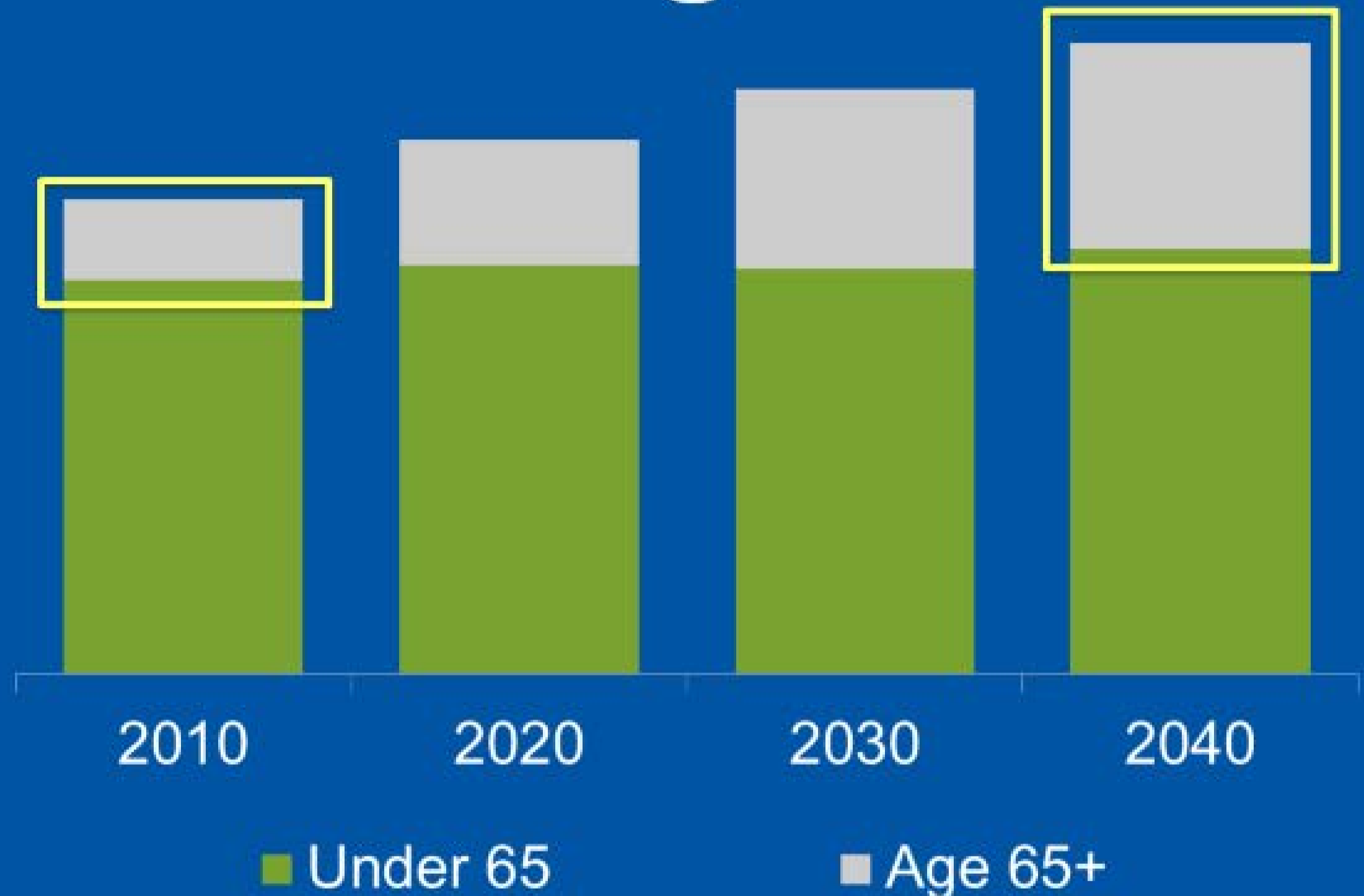
■ Ages 0-14 ■ Ages 15-24 ■ Ages 25-64 ■ Ages 65+

Source: 1990-2010 data on population from Census Bureau;
2040 forecasts from the Metropolitan Council (March 2015 release)

Growth among older adults driving household growth

One in **six** households in 2010

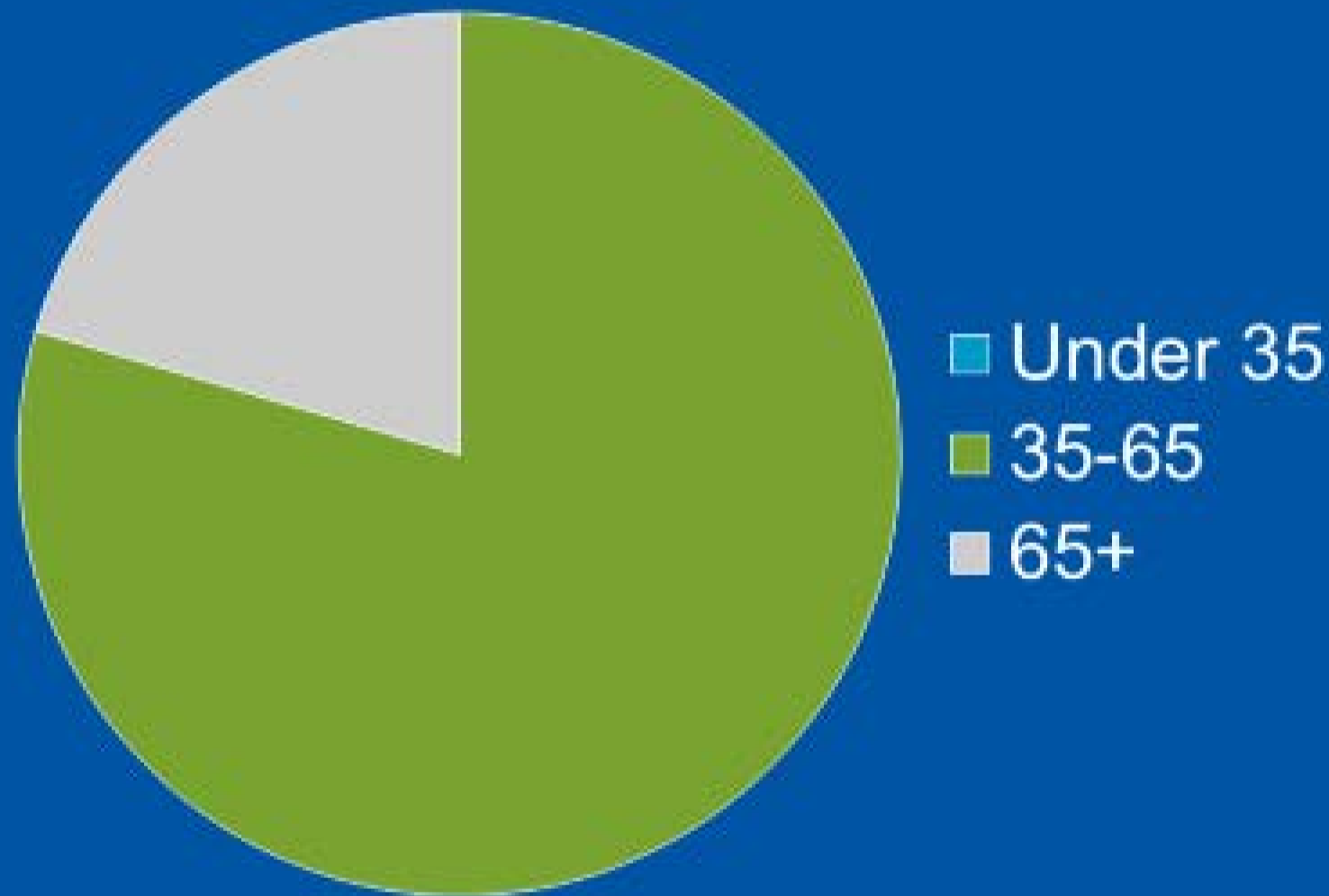
One in **three** households in 2040



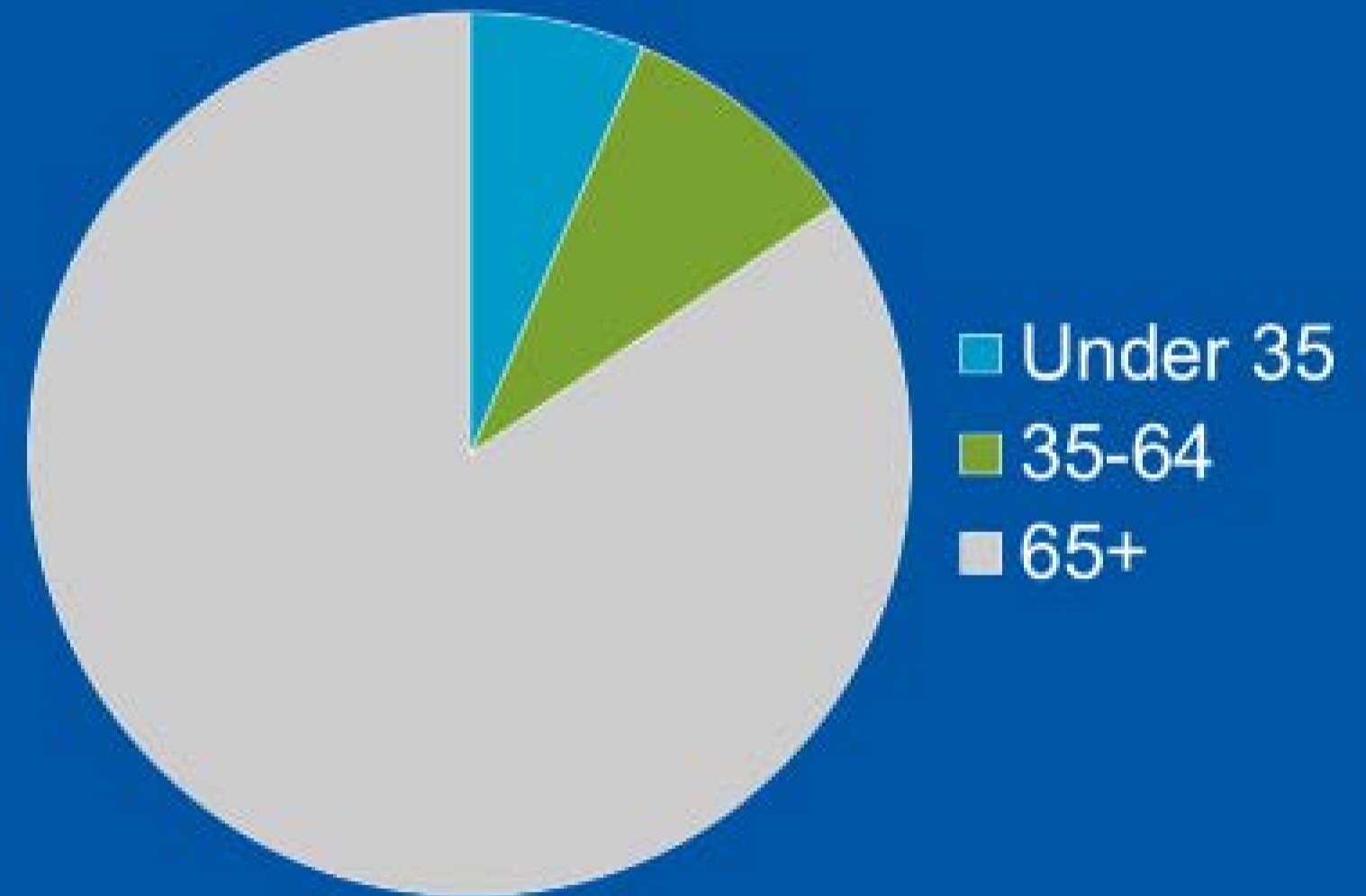
Source: 2010 data on households from Census Bureau;
2040 forecasts from the Metropolitan Council (March 2015 release)

How demographics matter

Net household growth
1990-2010



Net household growth
2010-2030



Source: Arthur C. Nelson, *TWIN CITIES Metropolitan Council Area Trends, Preferences, and Opportunities: 2010 to 2020, 2030 and 2040*, 2014.

What We Do - Why and How

- Livable Communities Act – adopted by Legislature 1995
 - Offer Grants to Cities
 - Compact, connected, efficient use of land
 - Connect different land uses and transportation
 - Walkable, livable neighborhoods
 - Clean- up polluted sites to enable redevelopment
 - Demonstration projects, transit oriented development
 - Incentive-based approach to help communities grow affordable and life-cycle housing opportunities across the Region

What We Do - Why and How

- Regional Parks, Open Space and Trails
 - 53 Regional Parks and Regional Park Reserves +
 - 40 Regional Trails with 340 miles +
 - 8 Special Recreational Features (i.e. Como Park) =
 - **47 Million Visits**
 - More than the MOA

What We Do - Why and How

- Metropolitan Housing and Redevelopment Authority (Metro HRA) created 1975
 - Provide over 7000 households with rental subsidies to make their housing cost affordable to their income – Housing Choice Voucher Program/Section 8, Shelter Plus Care, Bridges, HOPWA
 - 18,000 people, of which 10,000 are children
 - Over \$4 M in rent payments each month to over 2000 private landlords

How are we organized

- Metropolitan Council Members (17) direct all Work – Policy Makers
- 9 of 17 make up Community Development Committee
- Advisory Committees to CD Committee
 - Land Use Advisory Committee
 - Metropolitan Parks and Open Space Commission
 - Livable Communities Advisory Committee
 - PHA Resident Advisory Board

Key Programs and Initiatives

- Local Planning Handbook
- Community Choice Program
- Parks Ambassador
- Research on Racial Disparities
- Pilot TBRA Grants
- Climate Vulnerability Assessment
- Manufactured Housing Report

Community Development Division Overview

Metropolitan Council Equity Advisory Committee

June 21, 2016

