

Advice on Equity Analysis Requirement for Master Plans

September 17, 2019

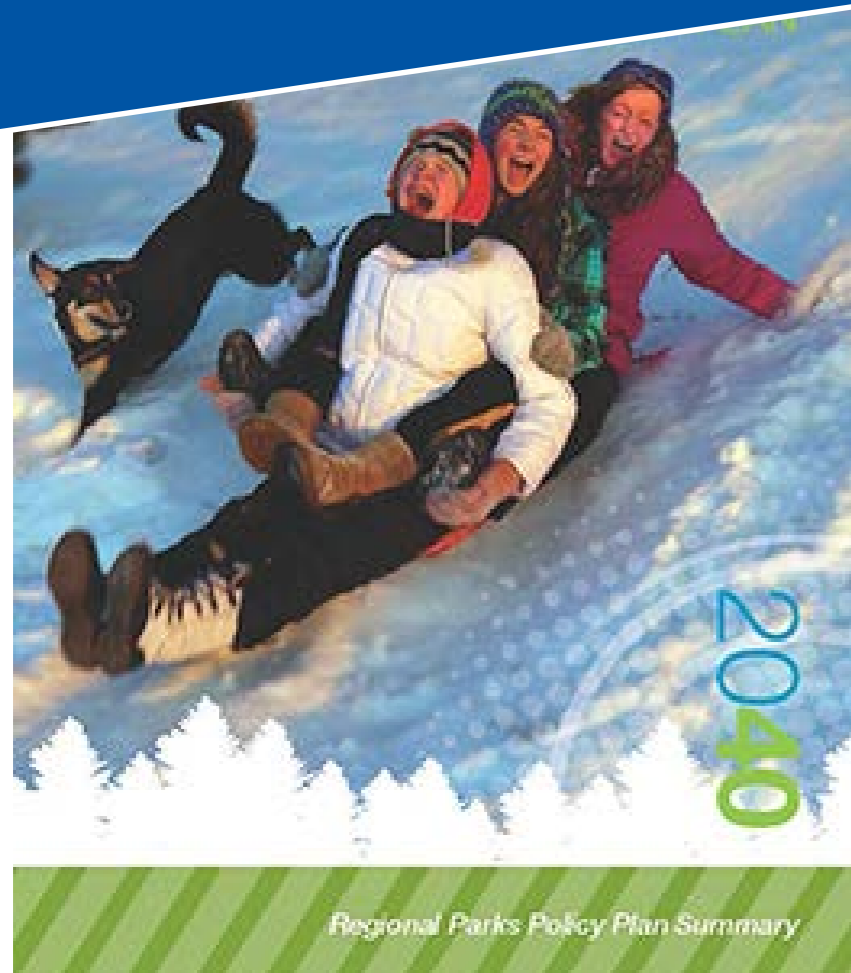
Equity Advisory Committee



What informs park & trail equity work

Policy Documents

- Thrive MSP 2040
- 2040 Regional Parks Plan
- Thrive Lens Analysis



Stakeholder Advice

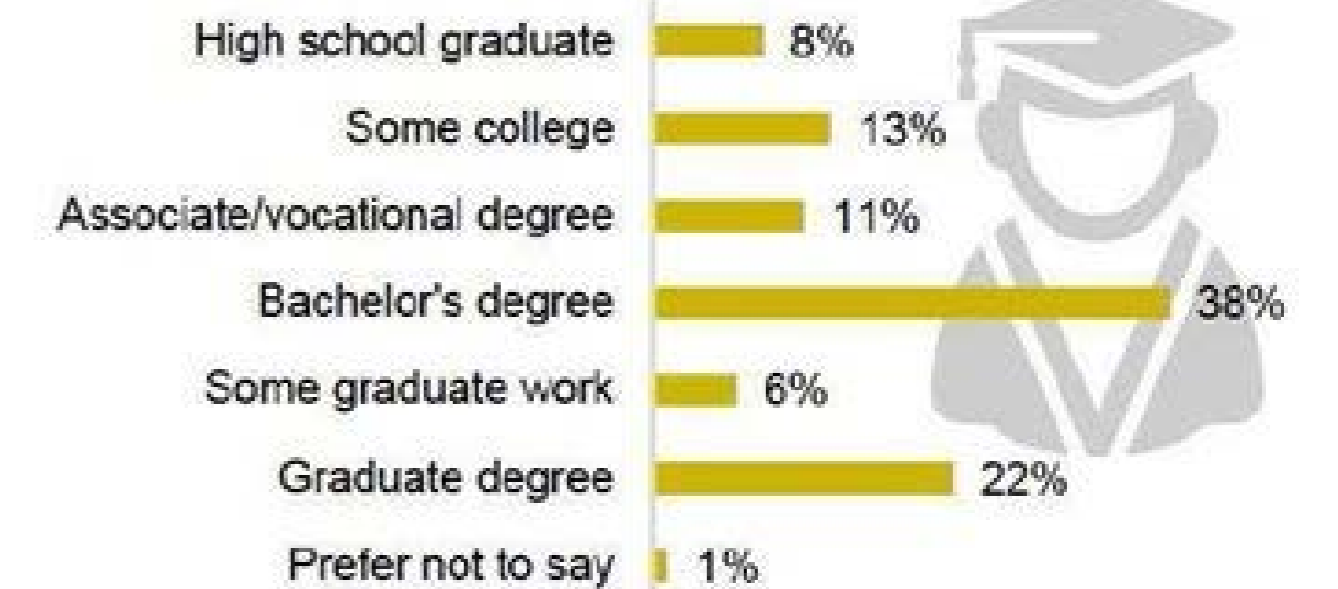
- Equity Advisory Committee input (see next slide) 2017-2019
- MPOSC, implementing agencies
- Focus groups



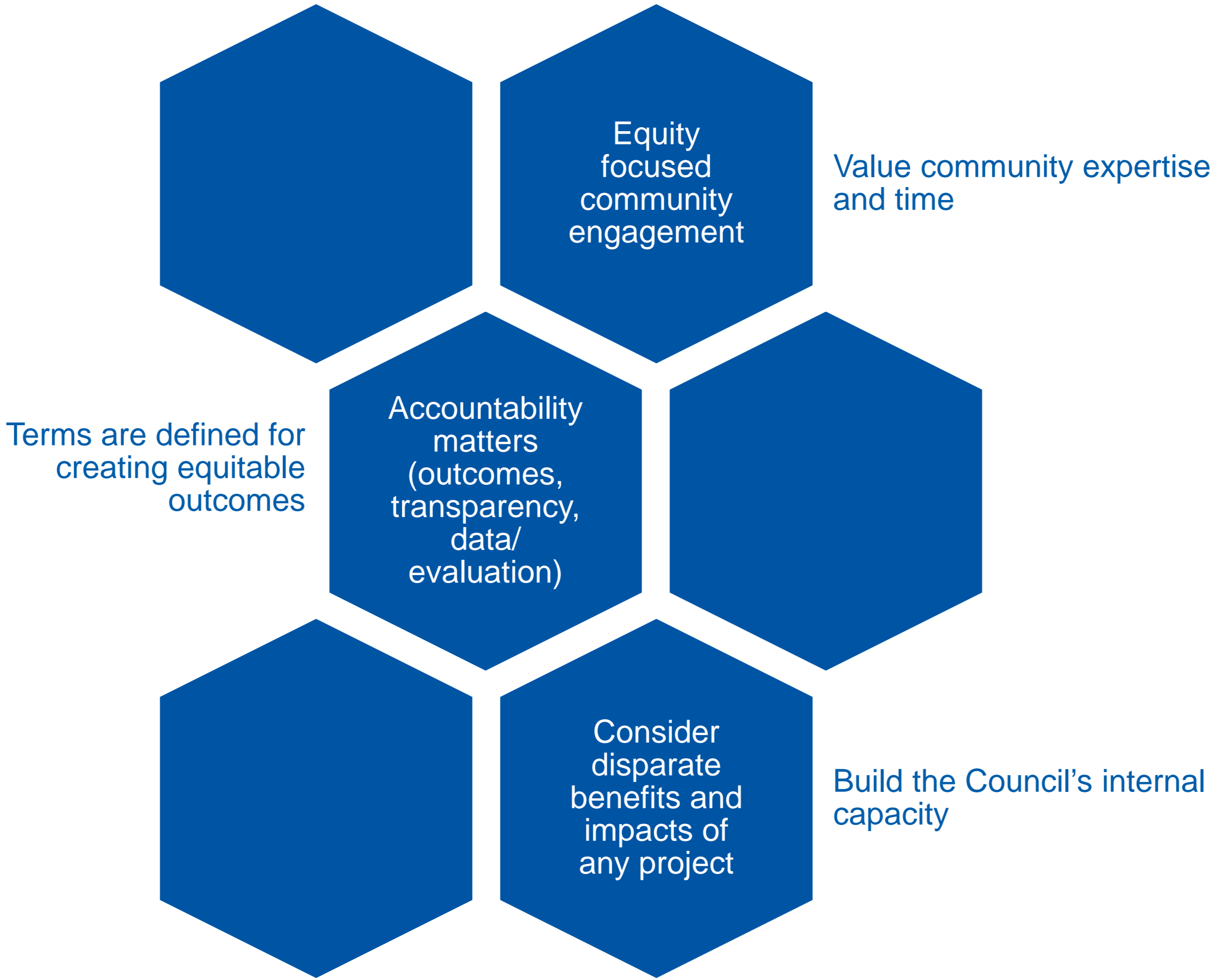
Parks Research

- 2016 Visitor Study
- 2014 Communities of Color Study
- Equity Toolkit Map

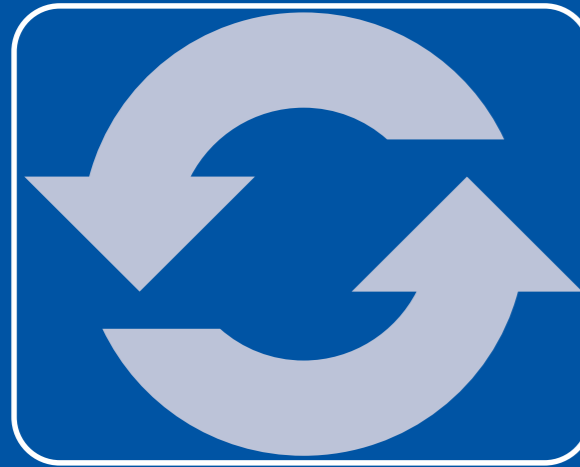
Education



Guiding Advice from Equity Advisory Committee Used in Met Council Parks



What's next: Why we're here tonight



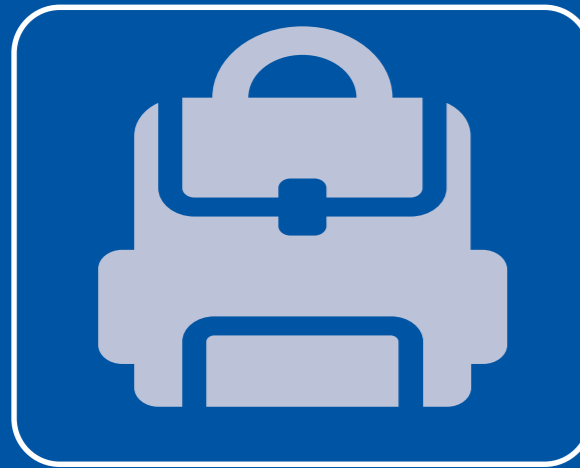
Equity toolkit (implemented)

- A set of questions used for funding requests annually or biannually
- Increase equity in ongoing funding decisions



Equity grant program (implemented, new)

- Applied for by agencies, a targeted funding specifically for equity
- Spur increased attention to equity, expand equity through decision-making process, capital expenditures



Programming and public engagement (implemented)

- Parks Ambassador and Agencies' operations and programming
- Creates a more equitable park/trail system through ongoing efforts to connect people to parks



Equity analysis requirement for master plans (tonight's topic)

- Guidance and expectations for planners to follow for each master plan or update
- Build equity into long-range planning

Park and Trail Master Plan Characteristics

Visions

Set a 10-20 year vision to guide long-term development and improvements.

Engage

“Allow community and partners to participate in the development of the plan, to know what is planned for a park, and how it affects them.”

Respond

Are living documents amended when improvements substantially differ in type, size, scale, or cost.

Step 1: Advising on hopes

1. Hopes

- Identify hopes: What would an equitable regional park and trail system look like?

Park and Trail Master Plan Characteristics

Visions

Set a 10-20 year vision to guide long-term development and improvements.

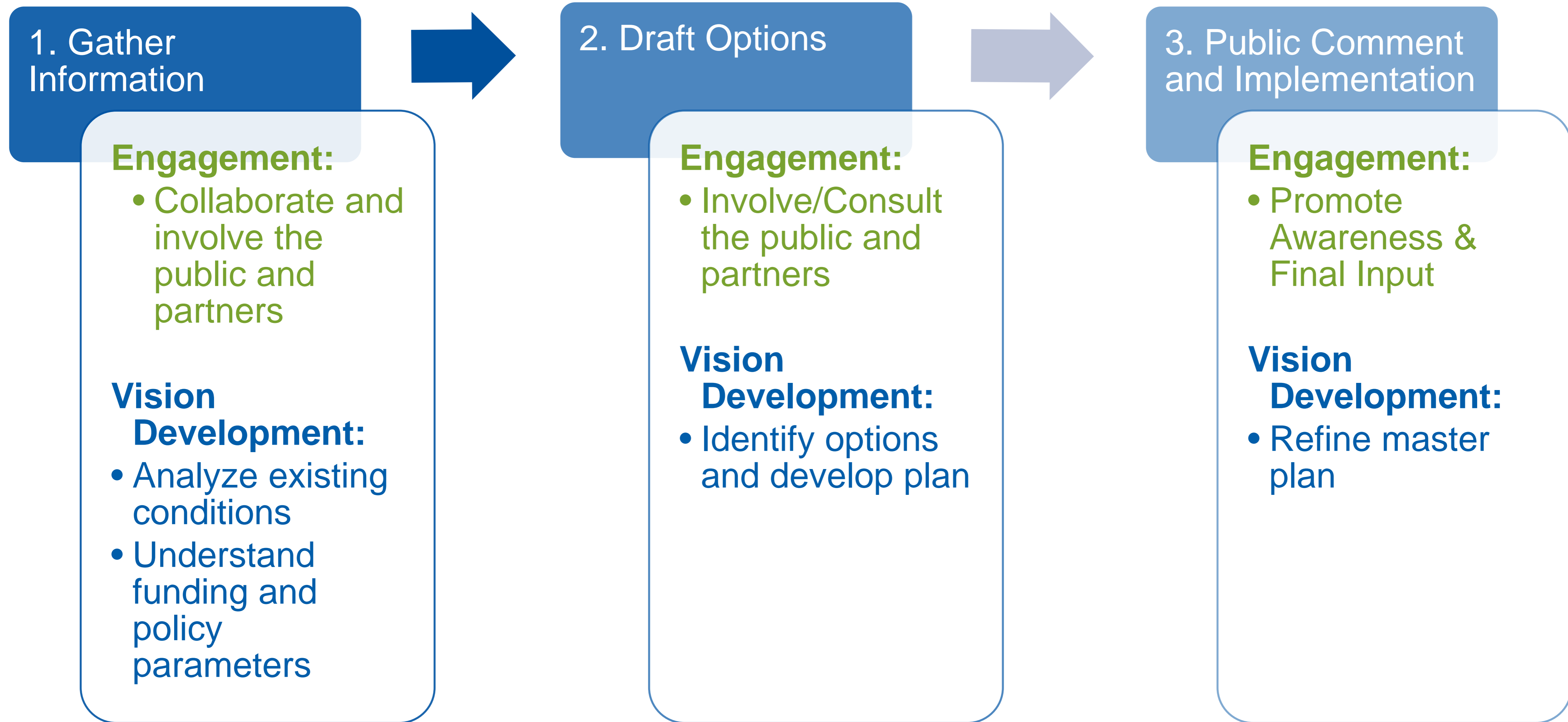
Engage

“Allow community and partners to participate in the development of the plan, to know what is planned for a park, and how it affects them.”

Respond

Are living documents amended when improvements substantially differ in type, size, scale, or cost.

Agency Master Planning Process



Step 2: Hopes/themes applied to MP context

2.
Apply
hopes
to MP

- **Guiding question:** To build an equitable regional park and trail system, what questions should master plans address?

Equity Analysis Requirement Process

Prior work
2014-2019

Collaborate
July - October

Shaping
/refining
November - December

Approval/
Piloting
February - March

