

2050 Regional Development Guide

Values and Vision Update

Equity Advisory Committee

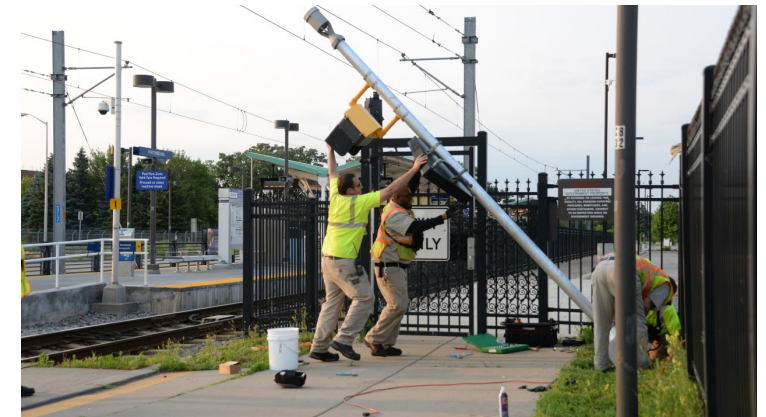
Michael Larson

January 17, 2023



Goals for Today

- Review your previous input
- Discuss draft content
 - Do we have the right tone?
 - Do our values seem clear?
 - Does an overall vision emerge in your mind?
 - Are important words or points missing?



Values

Core beliefs or principles that guide our work

Should address:

- Equity, justice, cultural competence, respect, and compassion
- Leadership, collaboration, entrepreneurship, and innovation
- Transparency, effectiveness, and accountability
- Stewardship, sustainably, and resilience

“Core” Values:


- Equity
- Leadership
- Accountability
- Stewardship

Equity: A Regional Core Value

Language for Consideration

- We value the wellbeing of the diverse communities of our region.
- We recognize the harm that injustices, including racism, have created.
- We are dedicated to creating systems, policies, and programs that repair past harm, foster an equitable future, and eliminate disparities. Communities that have been marginalized in the past will be at the center of this work in leadership roles.

EAC Input

- Love 
- Geography stops being the focus and humans become the center of the work.
- Acknowledgement of the stolen land (Ojibway & Lakota) on which the region was built.

Leadership: A Regional Core Value

Language for Consideration

- We value those in our region who inspire and motivate others.
- We need leadership to help confront the significant challenges we face around equity, climate change, and other pressing issues.
- To maximize the potential of our region and its communities, we need leadership that is diverse, collaborative, culturally competent, and innovative. This leadership needs to come from all sectors including business, government, non-profit, and education.

Previous EAC Input

- To see equitable changes to the region, the Met Council must operate outside their usual process, take a radical stance, and do things differently for better outcomes.
- Public research and leadership around equity
- Engaging and approachable

Accountability: A Regional Core Value

Language for Consideration

- We value being effective in our work and achieving measurable outcomes.
- We must be open to criticism and clearly understand if we are not achieving results.
- We recognize that we can only be successful in partnership with others. We will be transparent and flexible so that we can change course.

EAC Input

- We must think about how we measure equity outcomes to ensure that we are making progress.
- We need a plan of action to make room to talk about race and equity at the Met Council.
- Comfort with having “controversial” conversations.

Stewardship: A Regional Core Value

Language for Consideration

- We value our region's natural and economic resources.
- We recognize that our resources may be vulnerable over time to changing conditions, including from climate change.
- We must design our systems and allocate our resources in ways that can be sustained over time and support the needs of future generations.

EAC Input

- Additional EAC input welcome.

Cross-Cutting Regional Vision

Equity

Our Region is Equitable, Inclusive, and Welcoming

Climate

Our Region Leads on Climate Mitigation, Adaptation, and Resilience

Natural
Systems

Our Region Protects and Restores Natural Systems

Public Health,
Safety &
Wellbeing

Our Region's Communities are Healthy, Safe, and Vibrant

Regional Vision ⁽¹⁾

Equity

Our Region is Equitable, Inclusive, and Welcoming

Language for Consideration

- We uphold communities harmed by past and present injustices, including institutionalized racism.
- Communities of color participate fully in the economic and social life of the region.
- We no longer have significant income and wealth disparities related to race.
- Places throughout the region are affordable and accessible, including for people with disabilities.
- We are authentically welcoming to existing residents, newcomers and immigrants alike.
- We nurture opportunities for those with economic disadvantages.

EAC Input

- Educational, socio-economic, and health outcomes are not impacted by race, gender, ethnicity, disability status, or sexual orientation.
- People of color better are represented in homeownership, educational attainment, business ownership, and upper management positions.
- Disparities are eliminated.
- Opportunities for all to live affordably in neighborhoods of one's choosing.
- Reparations to the African-American and others whose ancestors were stolen and enslaved to build the region.

Regional Vision ⁽²⁾

Climate

Our Region Leads on Climate Mitigation, Adaptation, and Resilience

Language for Consideration

- Our most vulnerable communities are resilient to the negative impacts of climate change.
- We have eliminated or mitigated greenhouse gas emissions from all sectors including transportation, development, and industry.
- Our region has effective and reliable transit, ridesharing, and non-motorized transportation systems.
- Our built environment, infrastructure, and natural environment have adapted and are resilient to emerging climate-related stresses.

EAC Input

- Additional EAC input welcome.

Regional Vision ⁽³⁾

Natural Systems

Our Region Protects and Restores Natural Systems

Language for Consideration

- Development is orderly, efficient, and integrates natural systems as community assets.
- Development and infrastructure respect the constraints and vulnerability of natural systems.
- We protect surface and groundwater resources from contamination and unsustainable use.
- We protect high quality landscapes and habitat, especially those significant to Native communities.
- We preserve the highest quality agricultural land for food production.

EAC Input

- Additional EAC input welcome.

Regional Vision ⁽⁴⁾

Public Health,
Safety &
Wellbeing

Our Region is Healthy, Safe, and Vibrant

Language for Consideration

- Regional systems and services support the health and safety of our residents and workers.
- Cost-effective and equitable transportation alternatives provide reliable access to destinations.
- Our residents have safe and affordable housing choices throughout the region.
- Our residents have equitable access to high quality open space, outdoor recreation, and trails.
- Our economic centers are vibrant and accessible, fostering collaboration and innovation.
- Our educational and economic partnerships nurture the competitiveness of our workforce and economy.

EAC Input

- We have a region with creativity and art.
- We have spaces that are respected.

Next Step



Upcoming Council Review

- February 1, 2023
Revised Regional Values and Vision



Thank You

Michael Larson

Planning Analyst, Community Development

michael.larson@metc.state.mn.us

