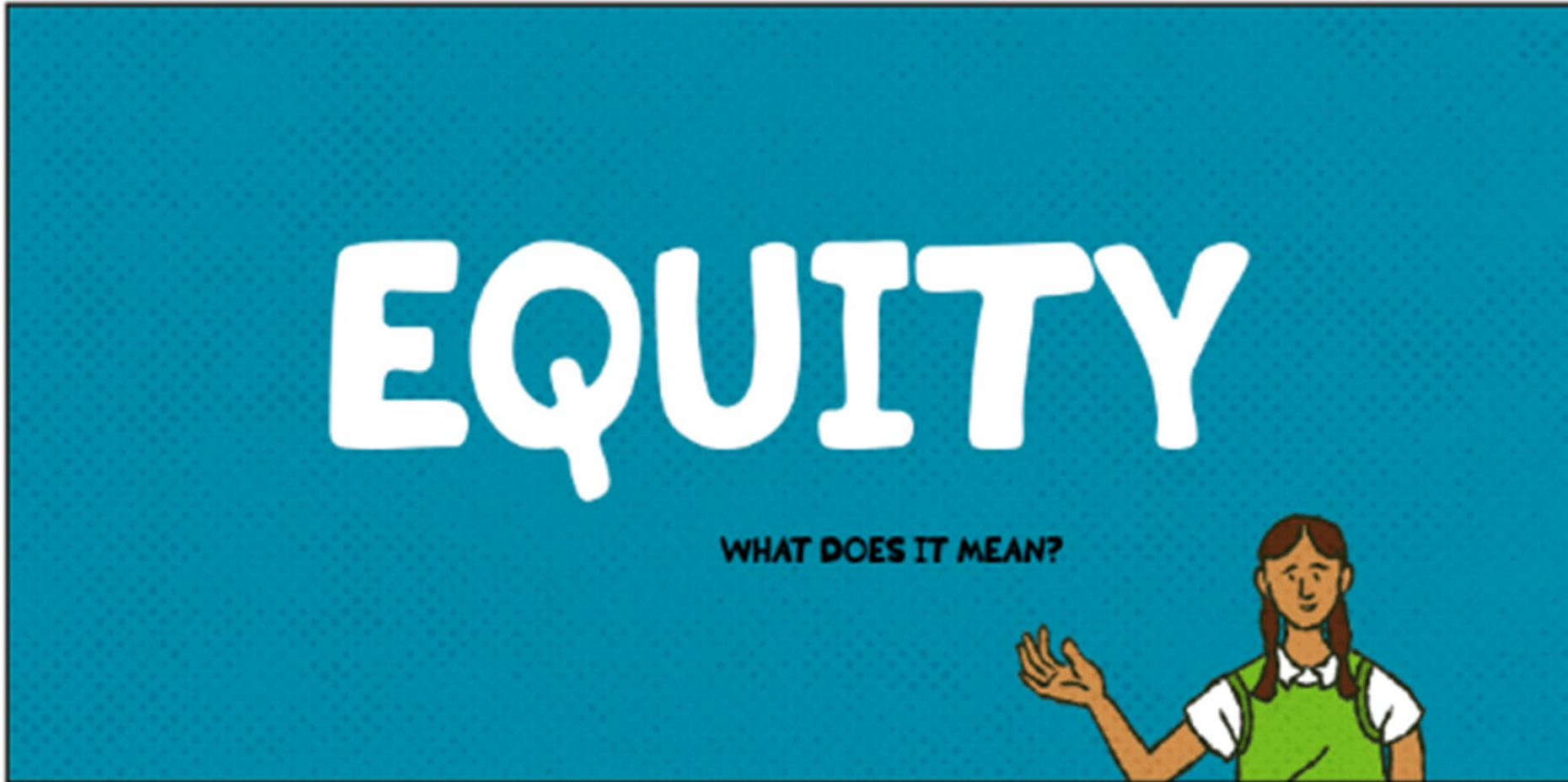


Transportation Equity Definition & Commitment



Abdullahi Abdulle (he/him)
Transportation Equity Planning Coordinator
Abdullahi.abdulle@state.mn.us

MINNESOTA GO

Shared Definition of Transportation Equity



Feedback from over 1,000 people

- Community based organizations
- Metropolitan planning organizations
- Local and federal transportation agencies
- MnDOT employee resource groups, diversity & inclusion committees
- Disadvantage Business Enterprise & Workforce Collaborative

Feedback Summary

- Be bold
- Acknowledge harm
- Create outcomes that repair past injustices
- Define 'fair'
- Rural and urban needs differ
- Definition needs to include additional groups

New Transportation Equity Language

- Acknowledgment of historic inequities
- Transportation equity definition
- Transportation equity commitment

Acknowledgment of Historic Inequities

“ MnDOT acknowledges the transportation system and agency decisions have underserved, excluded, harmed, and overburdened some communities. We understand some of our past decisions denied Black and Indigenous communities as well as people with disabilities the full participation of transportation benefits. These and other underserved communities have historically carried disproportionate burdens of transportation decisions

Transportation Equity Definition and Commitment

“ MnDOT is committed to creating an equitable transportation system.

Transportation equity means the benefits and burdens of transportation systems, services and spending are fair and just, which historically has not been the case. Transportation equity requires ensuring underserved communities, especially Black, Indigenous and People of Color, share in the power of decision making

The Journey Ahead

“ We will not transform our transportation systems, services and decision-making processes overnight, nor will we always get it right on the first try. Transportation equity is an ongoing journey of listening, learning, changing, implementing and adapting

Roles, Responsibilities, Partnerships

“ Everyone in our agency regardless of position or work assignment has a role to advance transportation equity. We will partner with community members, community-based organizations, transportation service providers, Tribal Nations and government institutions to evolve our work and to change outcomes for our communities

Next Steps

- Definition and commitment statement are included in the draft Statewide Multimodal Transportation Plan
- Wrapping up internal/external stakeholder engagements on the definition and commitment statement
- Publish the materials in centralized location accessible to all: [Advancing Transportation Equity Initiative webpage](#)
- Share definition with partner agencies to adopt or create their own versions
- Focus on capacity building and equity action planning

Contact Information

Abdullahi Abdulle, Transportation Equity Planning
Coordinator

Abdullahi.abdulle@state.mn.us