



# Equity Policy Update

Office of Equity and Equal Opportunity



June 2022 Lila Eltawely



# Equity Policy



## Background

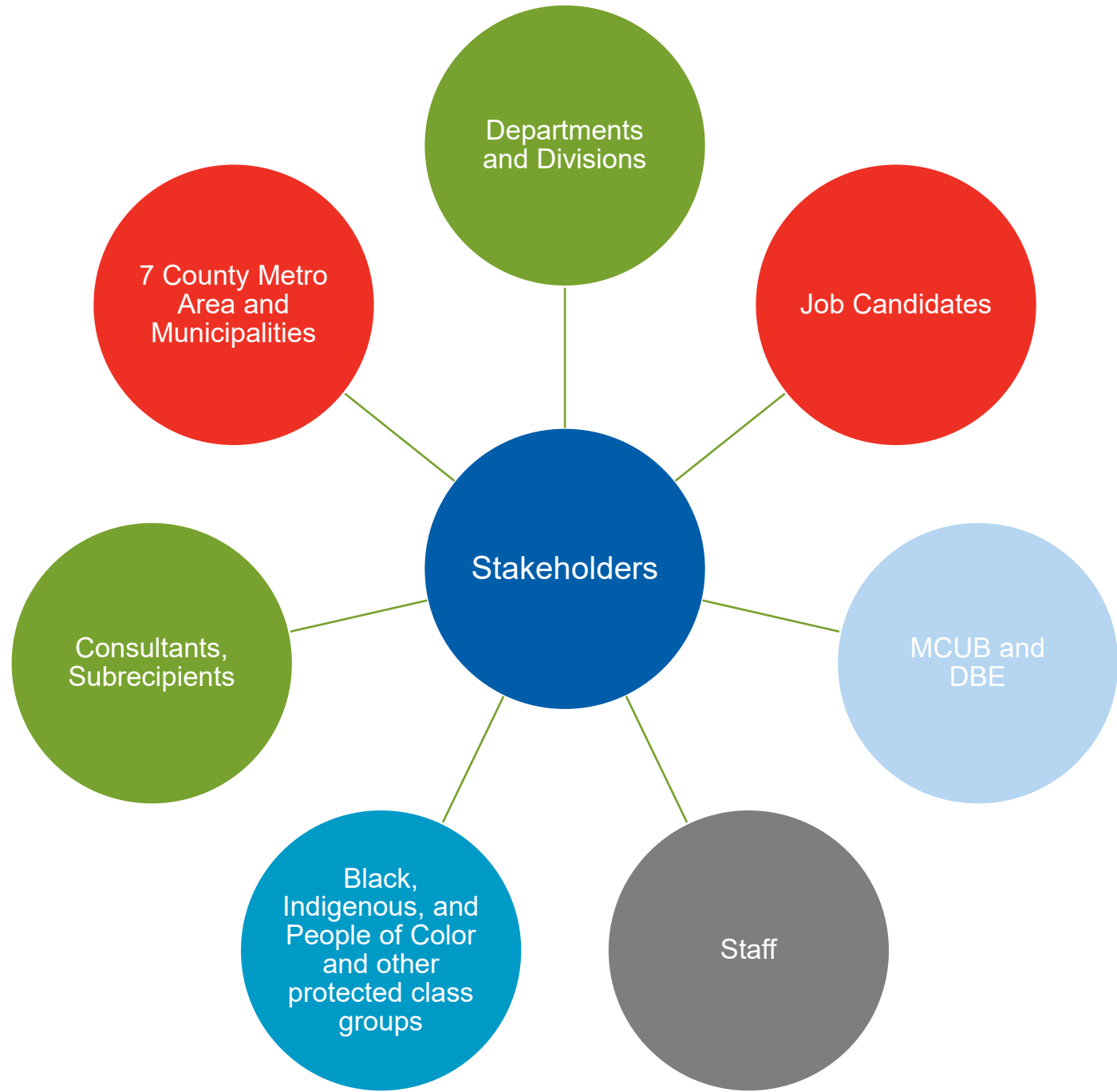
- Equity Policy created in 10/24/2018 by OEE0
- Last update- 2020 new template but policy remains the same
- Equity Policy connects the internal workings of the Metropolitan Council to Thrive 2040

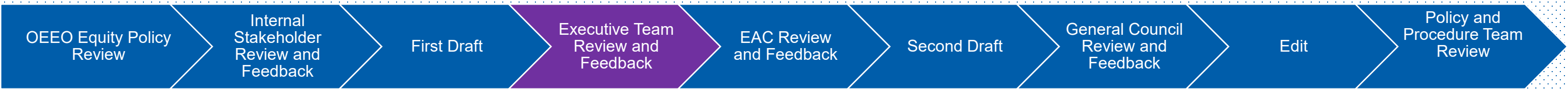
# Equity Policy



## What does an Equity Policy do?

- Recognizes systemic discrimination and commits the organization to continuously breaking down barriers
- Creates a structure for institutionalizing equity
- Disrupts unjust practices, policies, and procedures and holds us accountable
- Commits the organization to the use of an equity lens in all decision making
- Creates clear expectations







# Feedback



## Equity Policy Update

1. What is missing?
2. What works well?
3. What should be changed?