



US Water Alliance Equity Network

An Equity Opportunity for Environmental Services



June 20, 2023

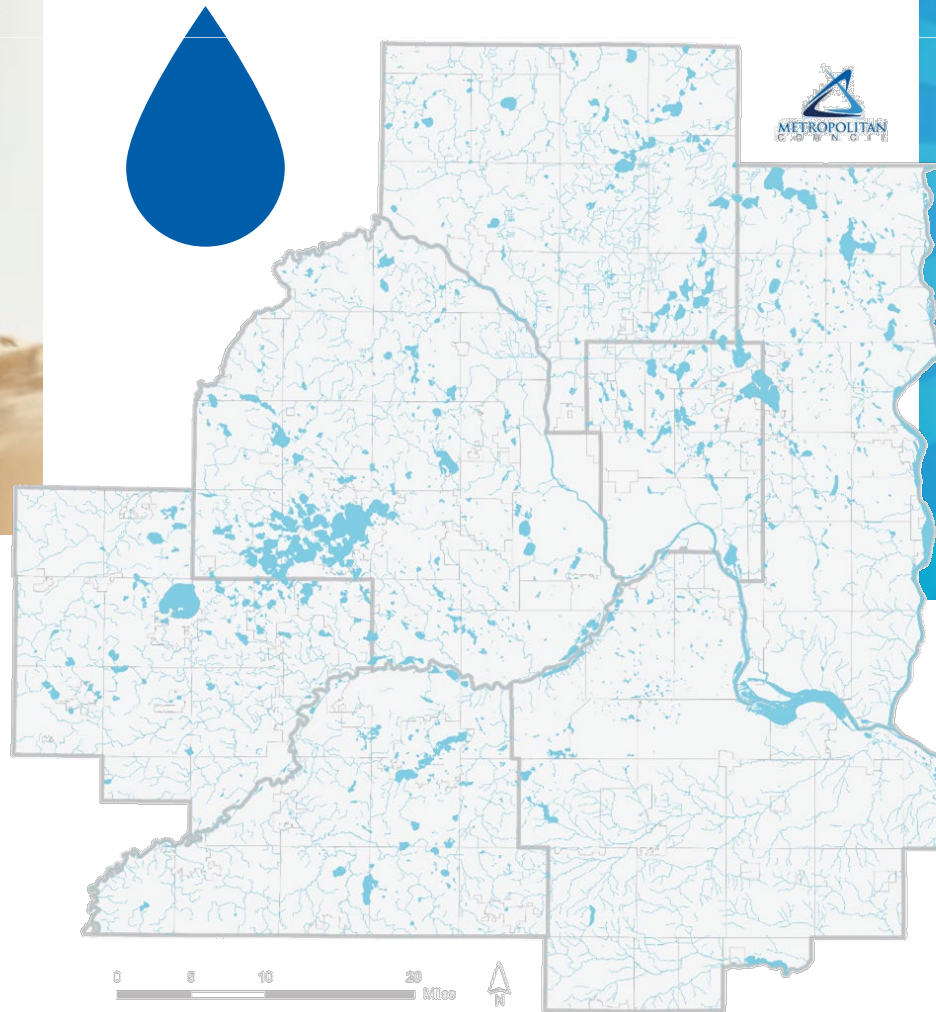
Goals for Today



Meet, Introduce, and Discuss

- Meet one another and begin building rapport
- Introduce Environmental Services (ES)
- Discuss alignment with the USWA Water Equity Network

Water, water everywhere...



Separated Systems – Connected Water



Serving the region



**Water has no
boundaries**

**All water is
connected**

- Wastewater collection and treatment
- Wastewater planning
- Water quality
 - Surface water monitoring
 - Watershed planning
- Water supply planning
 - Efficiency grants

Environmental Services wastewater system

Who

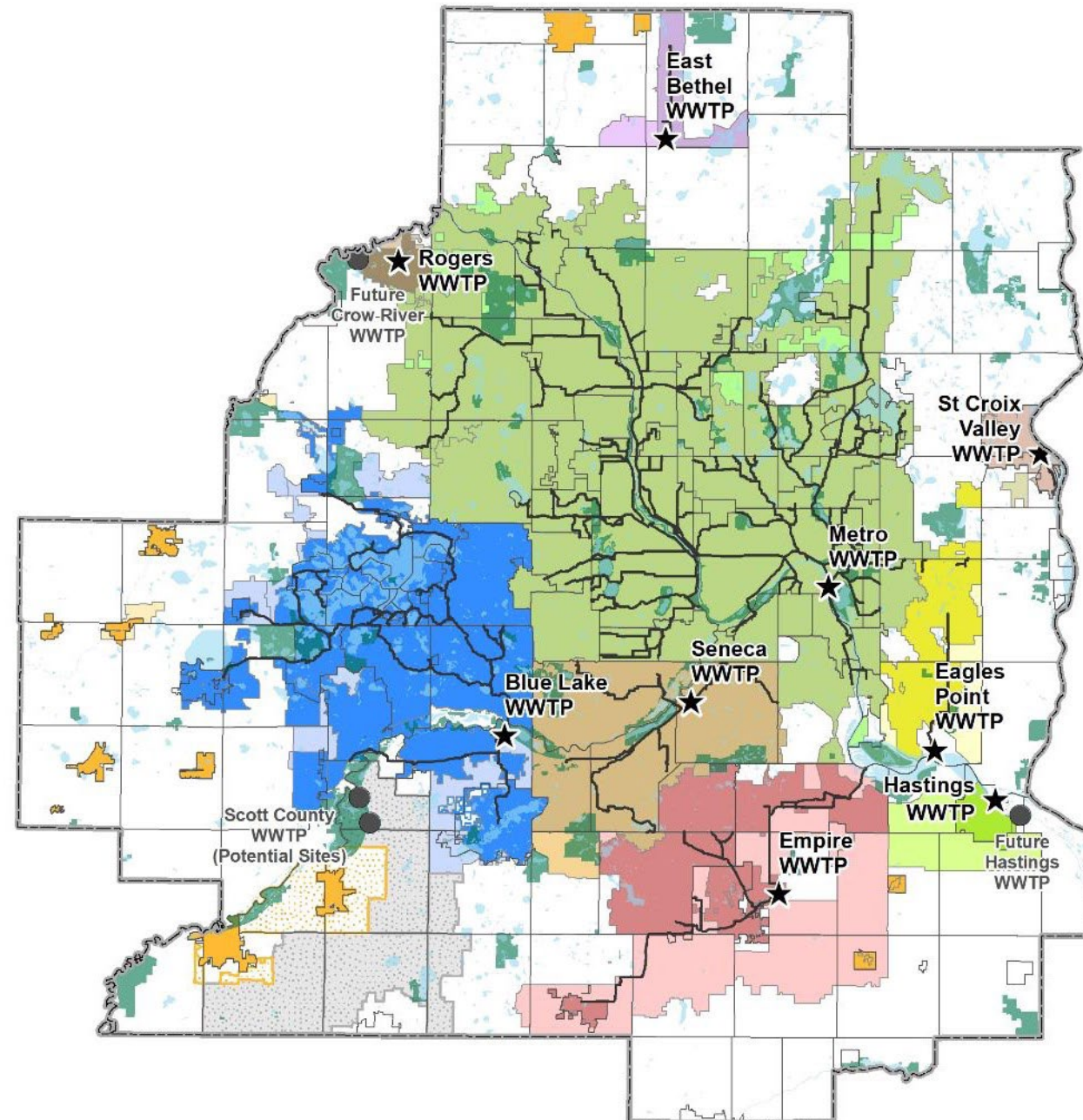
- 111 communities
- 2,700,000+ people

Our facilities

- 9 wastewater treatment plants
- 250 million gallons per day (avg)

Our organization

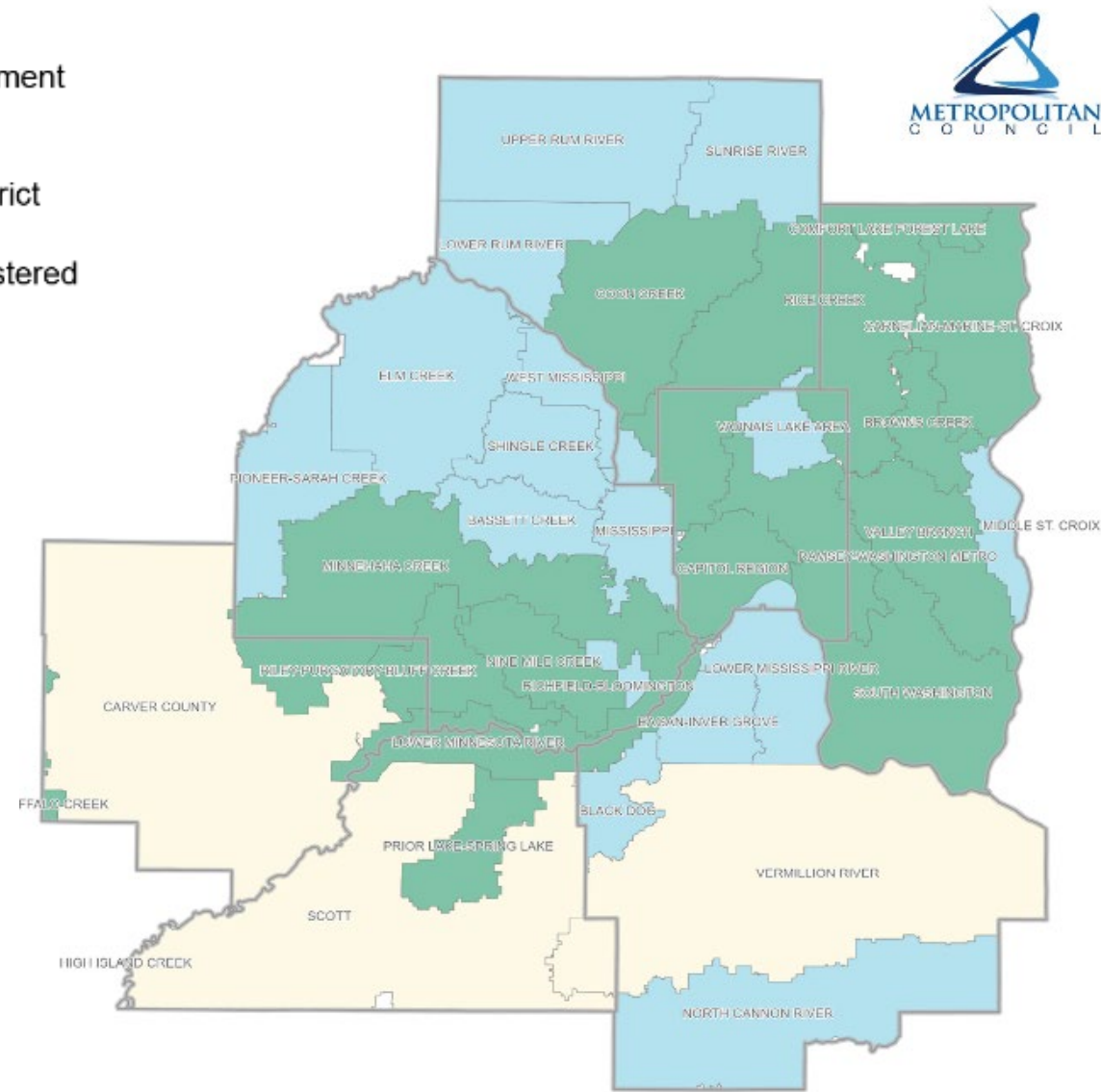
- 600+ employees
- \$7 billion in valued assets
- \$150 million/year capital program



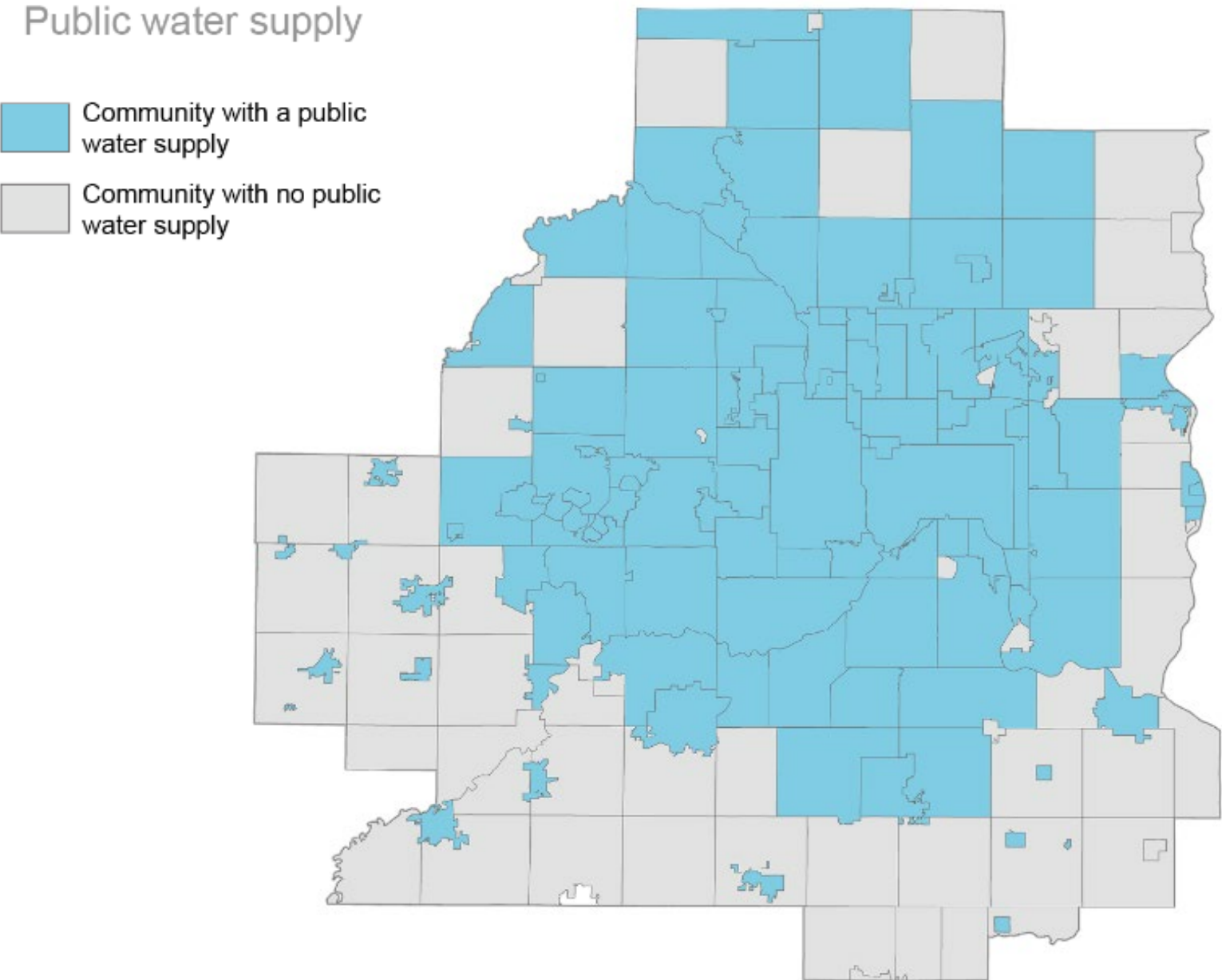
Watershed Management Partners

Watershed management

- Water management organization
- Watershed district
- County administered planning



Local Water Suppliers



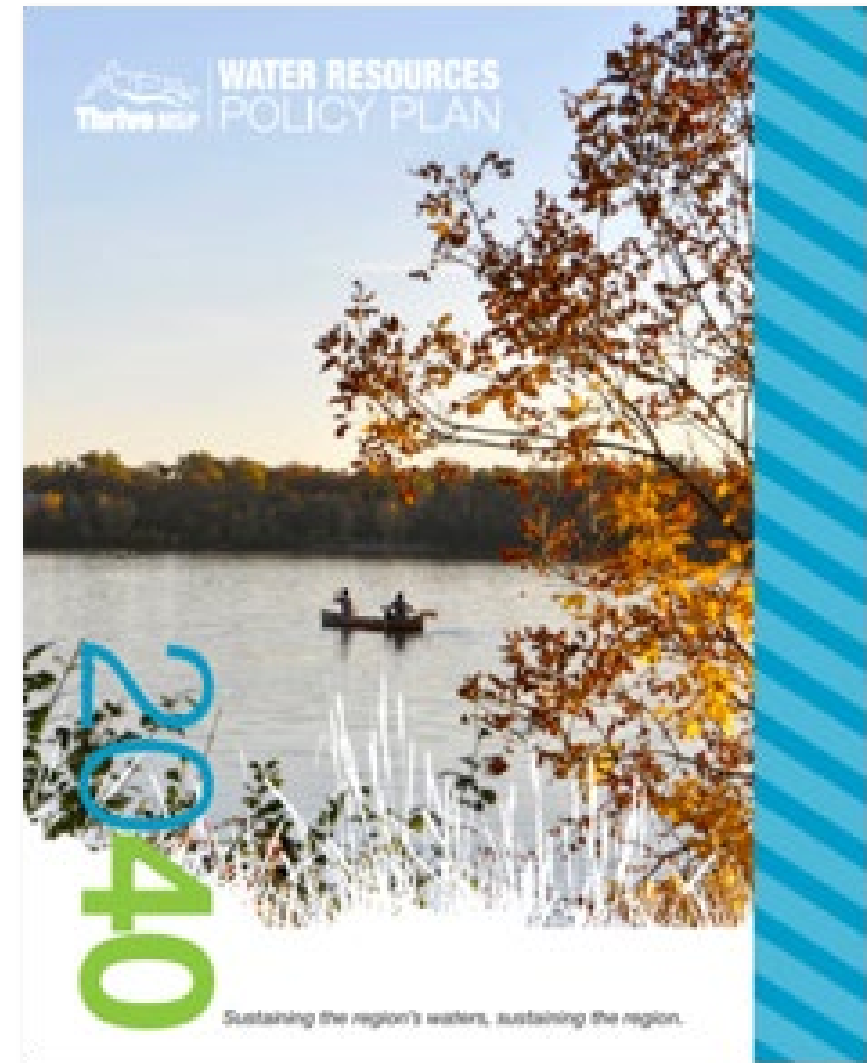
Water Resources Policy Plan

Guides the orderly, economic development of the region

- Long-term wastewater system plan
- Reserve capacity to serve growth

Protects public health and water quality

- Reliable, high-quality wastewater conveyance and treatment
- Water resources information and planning assistance
- Commits us to act in the areas of long-range visioning and planning, regional system investments, facility management, technical assistance, research and assessment, and partnerships.



ES is Unique in the Met Council



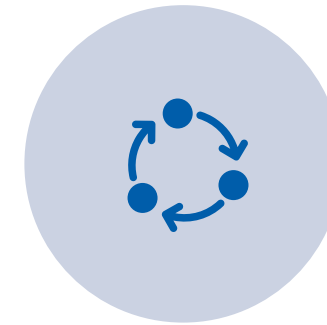
STATUTE & GOVERNING
AGENCIES



FUNDING



OUR CUSTOMERS



PLANNING,
OPERATIONAL AND
REGULATOR

- What it is?
- Why join the WEN?
- What will we get from it?
- How does the EAC fit in?
- Next steps



Water Equity Network



What is the US Water Alliance?

A member-support national nonprofit water organization

They align diverse stakeholders—

- Utilities
- Public agencies
- Community organizations
- Environmental groups
- Agricultural interests
- Labor
- Researchers
- Artists and culture bearers
- Many others



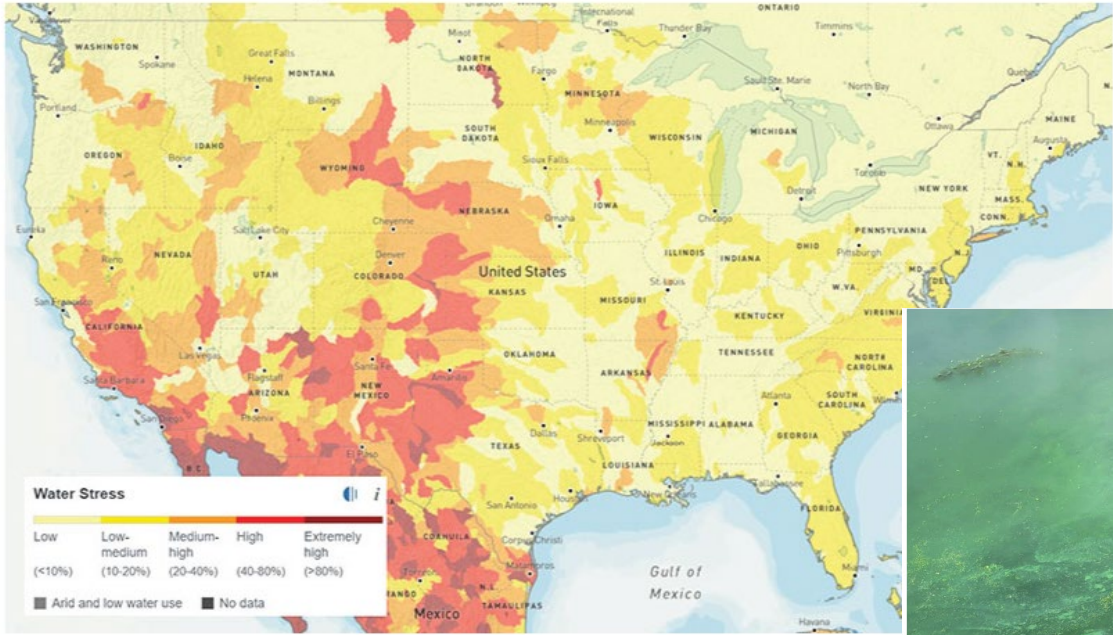
—to find common ground solutions to our nation’s most pressing water challenges.

Members of the Network



Pressing Water Equity Challenges

U.S. Water Stress Map



SOURCE: World Reso



Why join the Water Equity Network?



Resources & Opportunities

- Water Equity Orientation and Onboarding
- Water Equity Challenges and Opportunities Analysis
- Peer Utilities Idea Exchanges
- Ongoing Knowledge Building
- Network Events
- Matchmaking and Mentoring
- Water Sector Connections
- Regional Cohorts

Pillars of Water Equity

Pillar One:

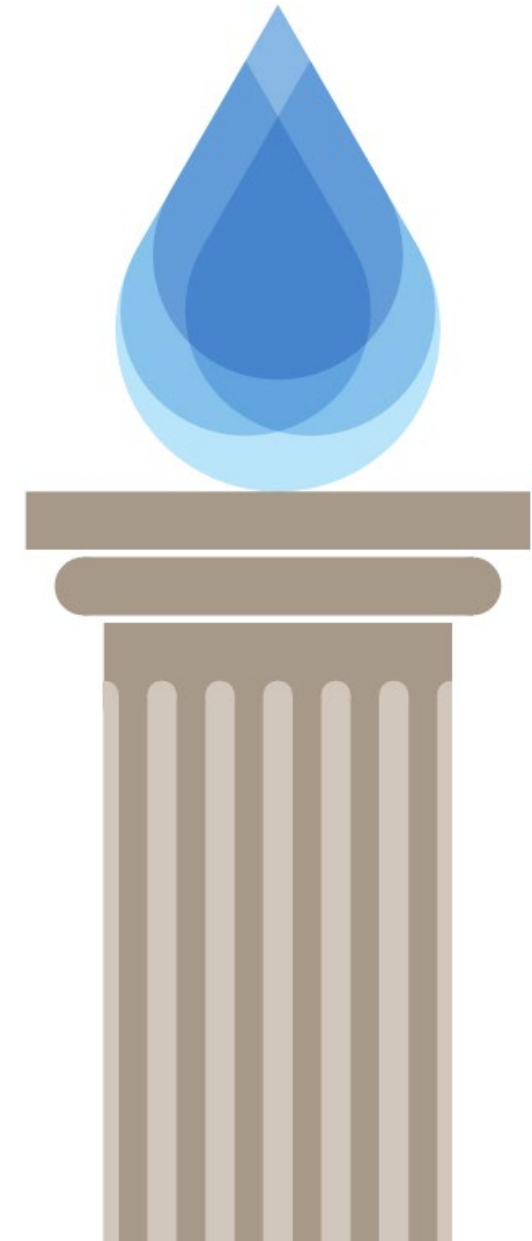
Ensure all people have access to clean, safe, affordable water service.

Pillar Two:

Maximize the community and economic benefits of water infrastructure investments.

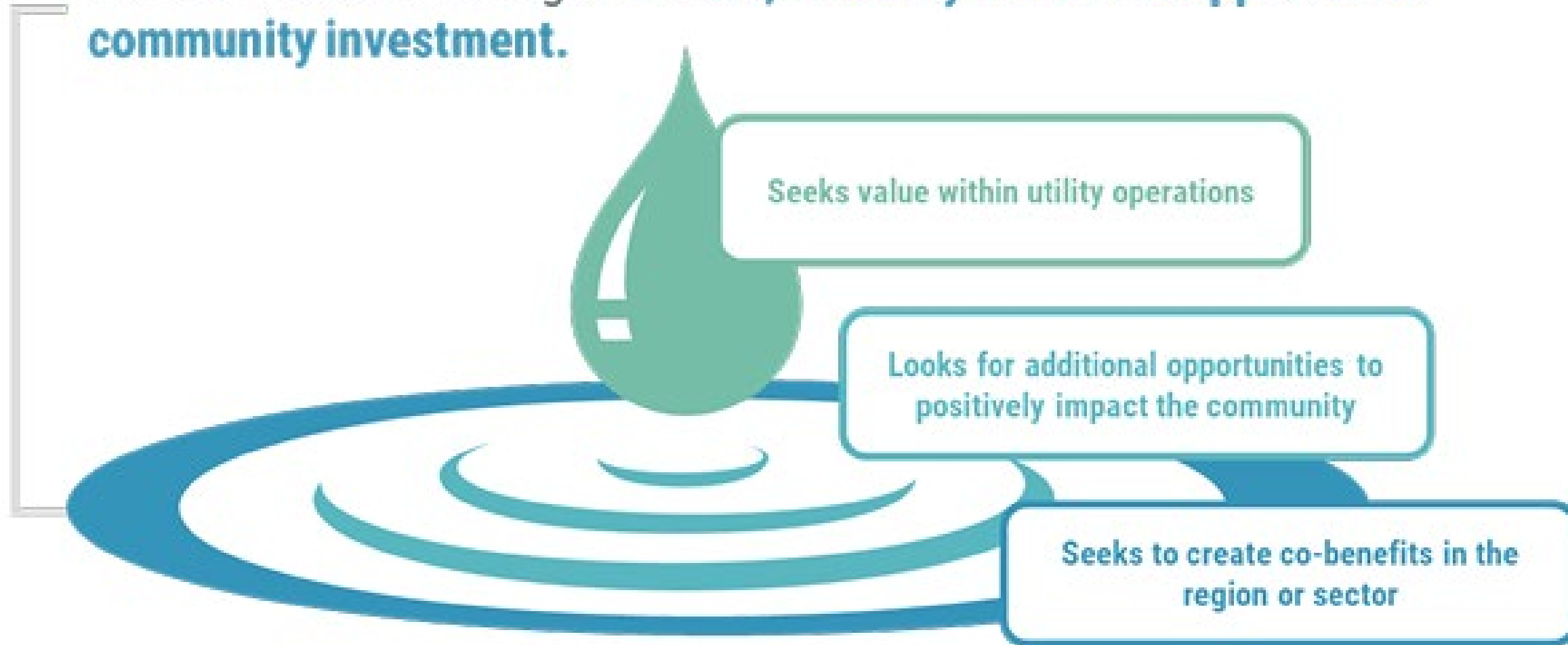
Pillar Three:

Foster community resilience in the face of a changing climate.

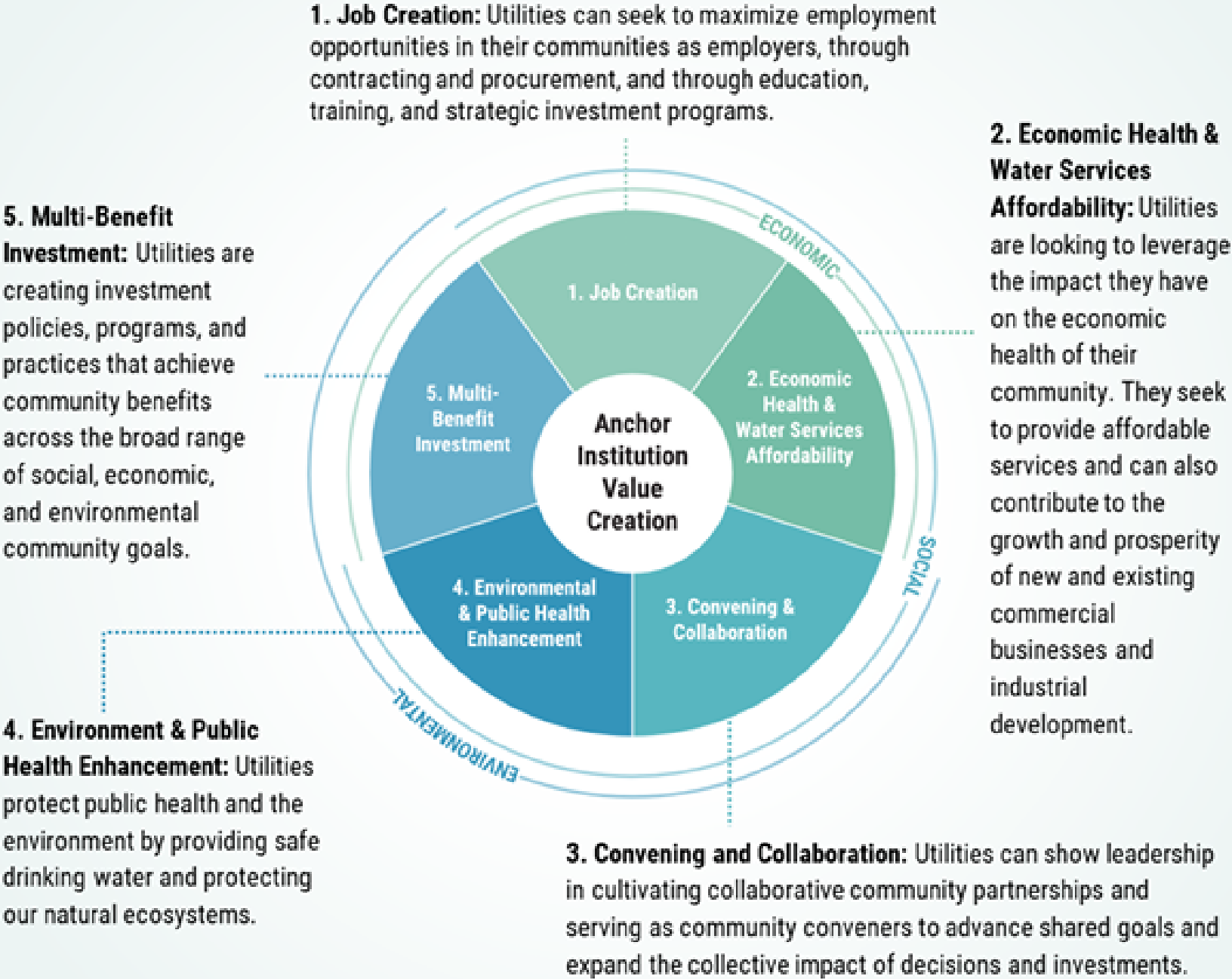


New Paradigm – Anchor Institution

Water utilities can bring a **holistic, mutually beneficial approach to community investment.**



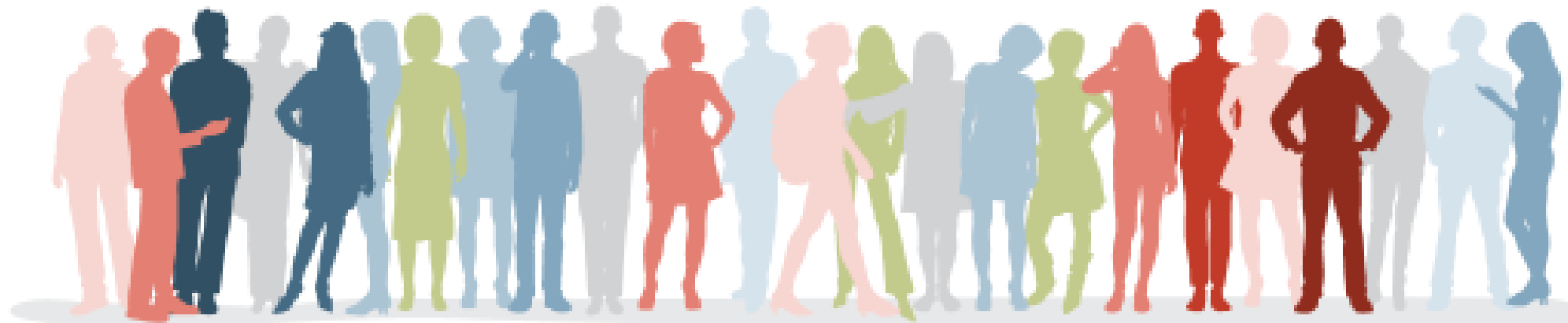
New Paradigm – Anchor Institution



Where do you (the EAC) fit in?

Help us as we learn – grow with us – join us.

- It is early in the USWA Water Equity Network Program, but we wanted to share this opportunity with you.
- We will focus on equity pillar(s) that make sense for the region and the regional systems.
- We will need your perspective as residents from the metro to ensure we are best addressing regional water inequities and needs.
- We will need your help to propose and identify community organizations that we could build relationship with and develop co-benefits.



Next Steps

We will come back!

- ES Staff will continue to attend learning sessions to better understand the US Water Alliance Water Equity Pillars and Anchor Institution concepts.
- In the fall, with the help of US Water Alliance staff, we will identify opportunities that both fit the regional needs and Environmental Services' authorities through the co-creation of an equity opportunity brief.
- We will come back and share results with you and solicit your assistance in brainstorming community connections.
- Implementation will begin in 2024!



Andrea Kaufman

Program Coordinator
ES Workforce & Equity
Andrea.Kaufman@metc.state.mn.us

Jen Kostrzewski

Environmental Analyst
Water Resources Planning
Jennifer.Kostrzewski@metc.state.mn.us

Jana Larson

Senior Outreach Coordinator
ES Administration and Communications
Jana.Larson@metc.state.mn.us

