



Pilot Private Property // Grant Program

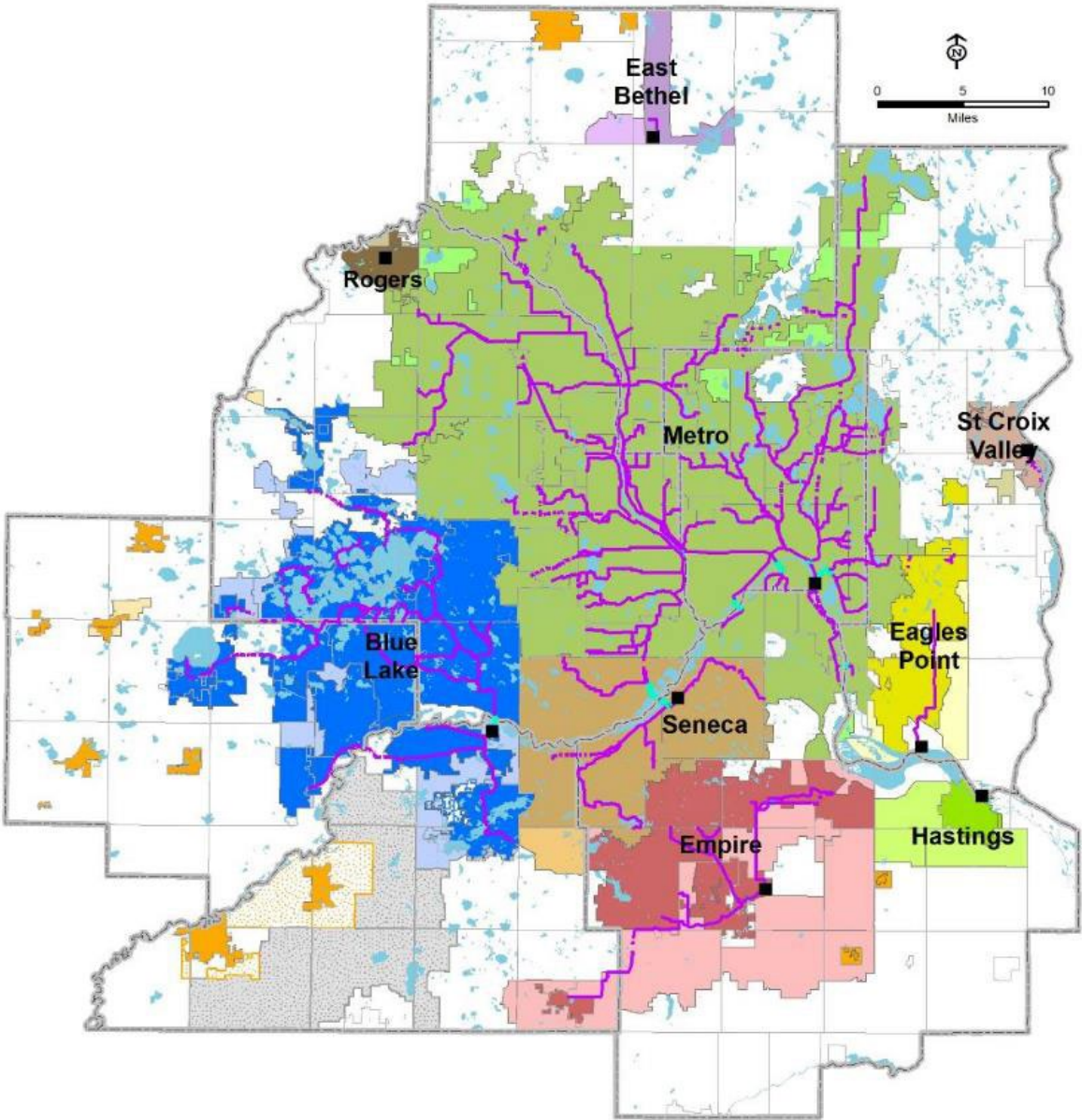
Equity Advisory Committee

May 16, 2023



Council Member Wendy Wulff

Met Council wastewater system



Protects public health and safety



Protects the environment



Fosters the economic growth of the region

WHO WE SERVE

- 7-county twin cities metro area
- 111 communities
- 2,800,000+ people

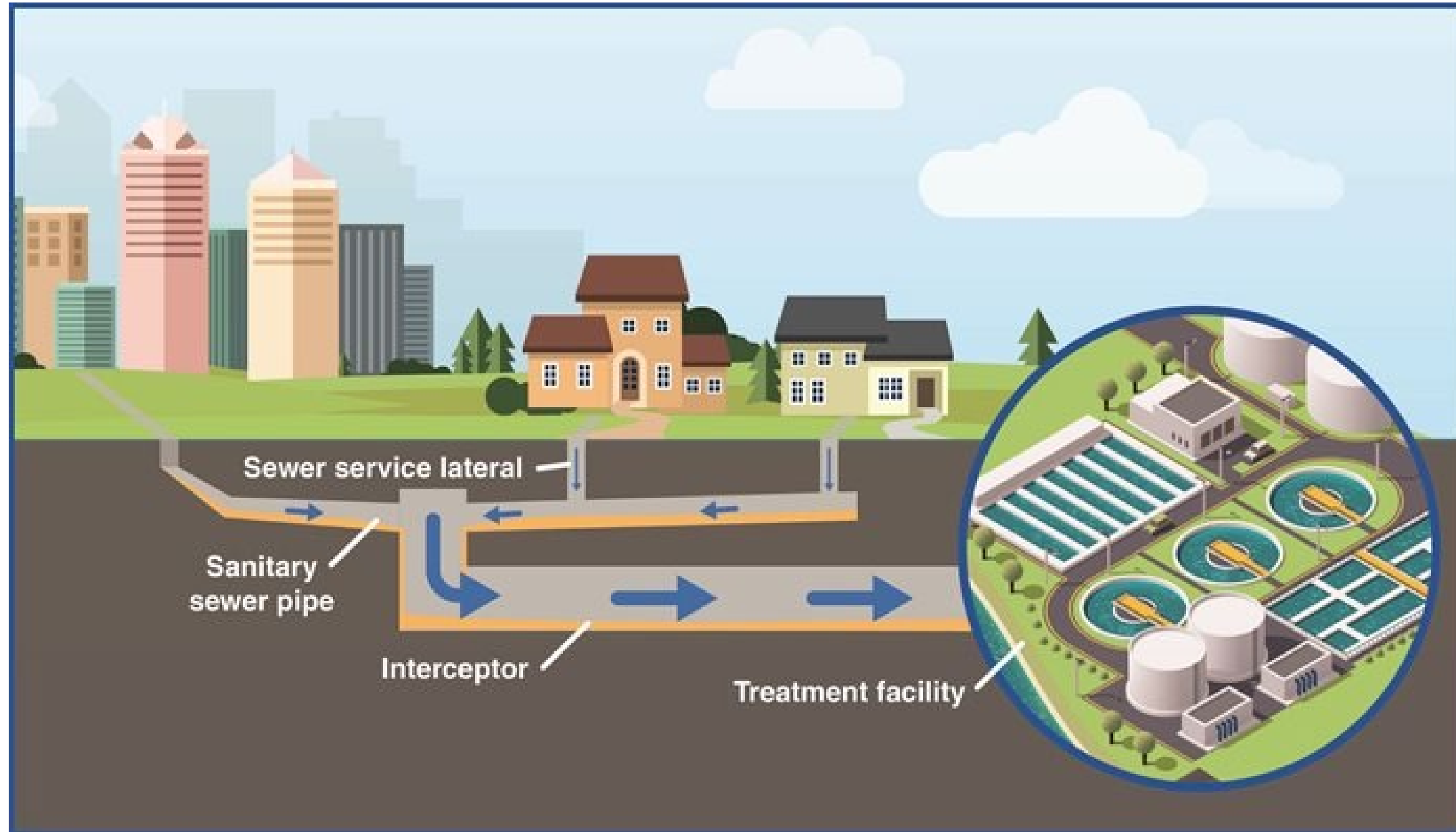
OUR FACILITIES

- 9 wastewater treatment plants
- 61 pump or lift stations
- 640 miles of interceptors
- 250 million gallons per day (avg)

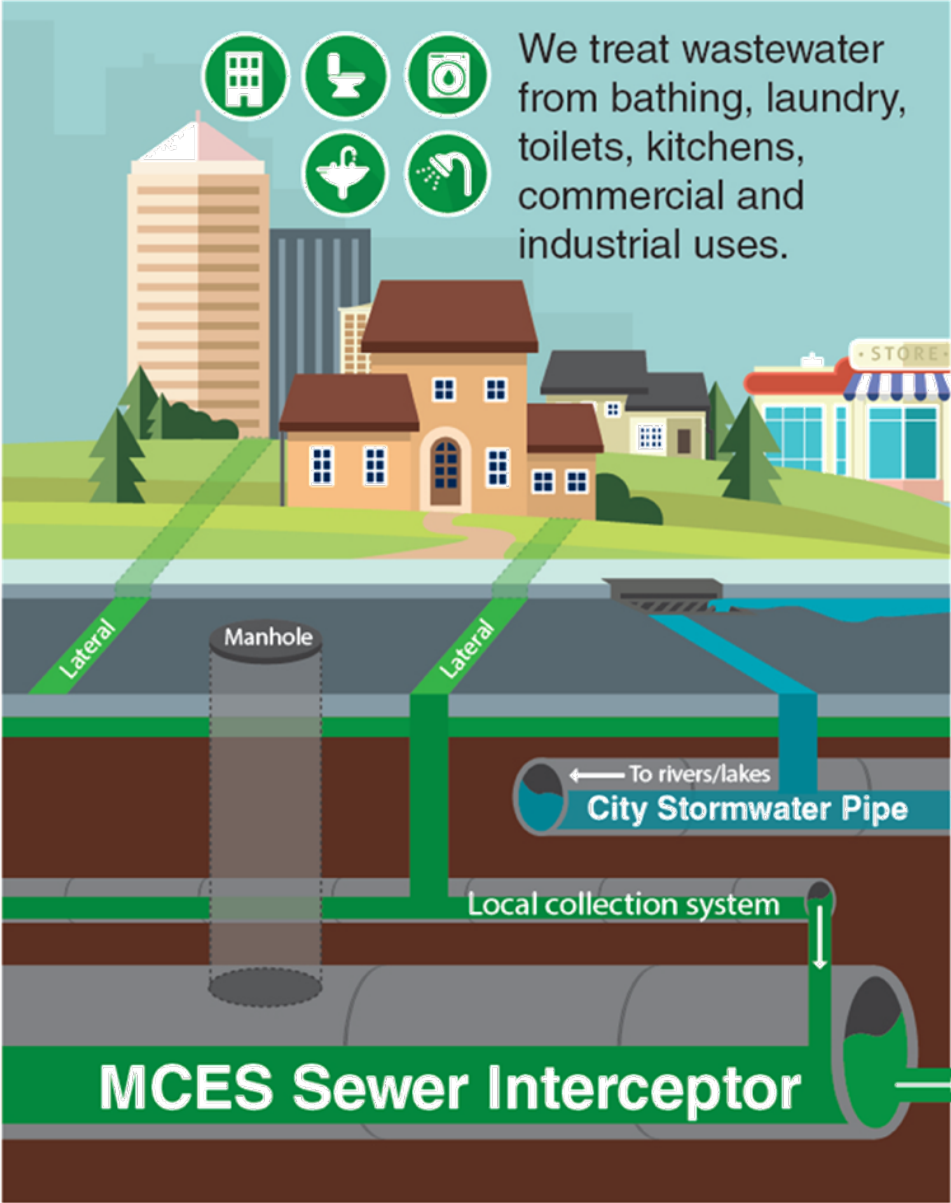
OUR ORGANIZATION

- 600+ employees
- \$7 billion in valued assets
- \$150 million/year capital program

The wastewater collection system



Regional and Local Wastewater System



Our treatment process removes pollutants by converting them to small volume of organic solids, and returns clean water to the environment.

To wastewater treatment plants



Communities Served are Customers & Partners

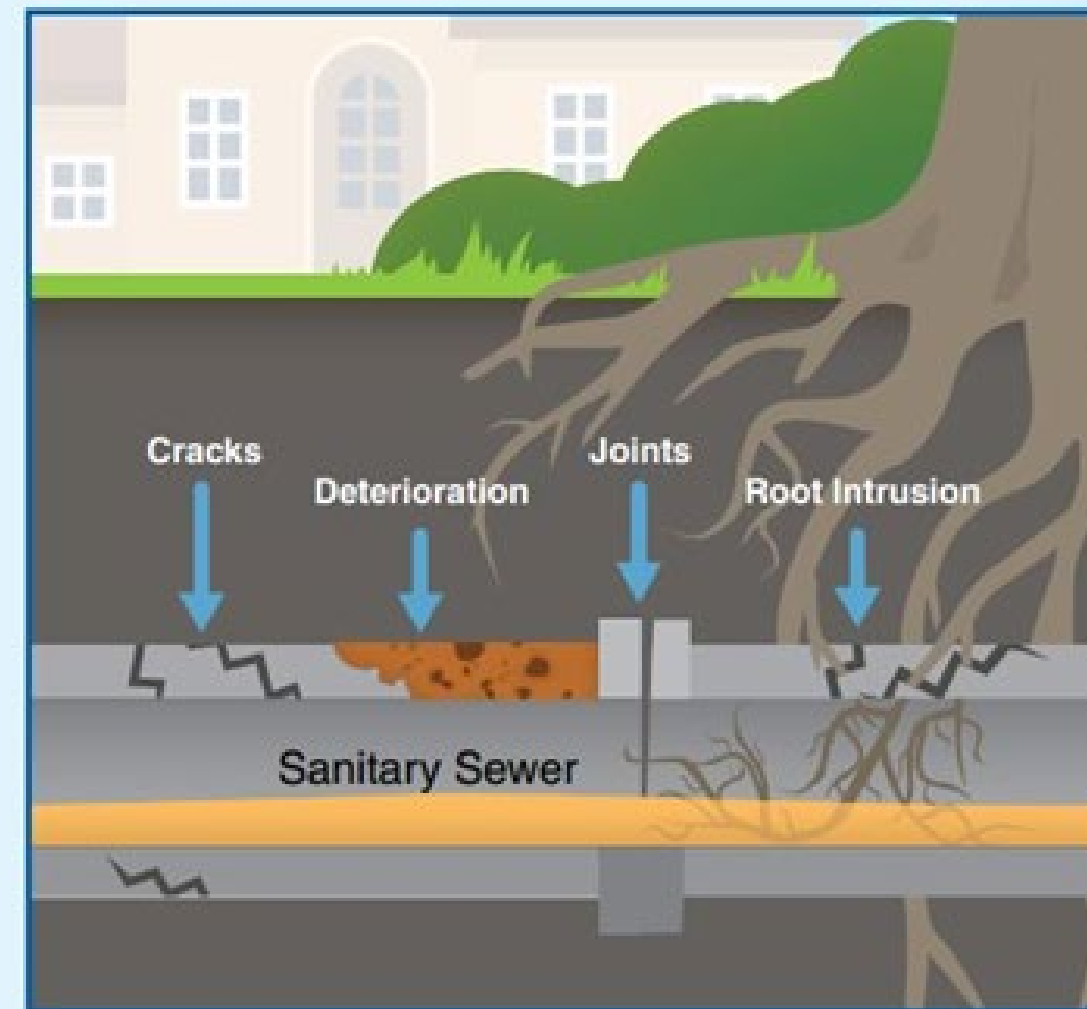
1987 Superstorm - Blue Lake Siphon Washout



What is Inflow & Infiltration?



Inflow is clear water that quickly enters the wastewater system after rainfall events from sources such as sewer cleanouts, sump pumps, gutters, building foundation drains, and broken maintenance hole covers.



Infiltration is clear water that gradually enters the wastewater system below ground through cracks and openings in sewer service lines and joints, and public sewer mains and deteriorated maintenance holes.

How do we fix it?

Ongoing Maintenance

- Separating the wastewater system from the stormwater system (complete)
- Inspecting and repairing the regional infrastructure (ongoing)
- Inspecting and repairing city-owned infrastructure (underway since 2004 with shared funding)
- Repairing private service laterals (needs attention)



I/I Mitigation Program Results



Regional population increased 12% 2005-2020

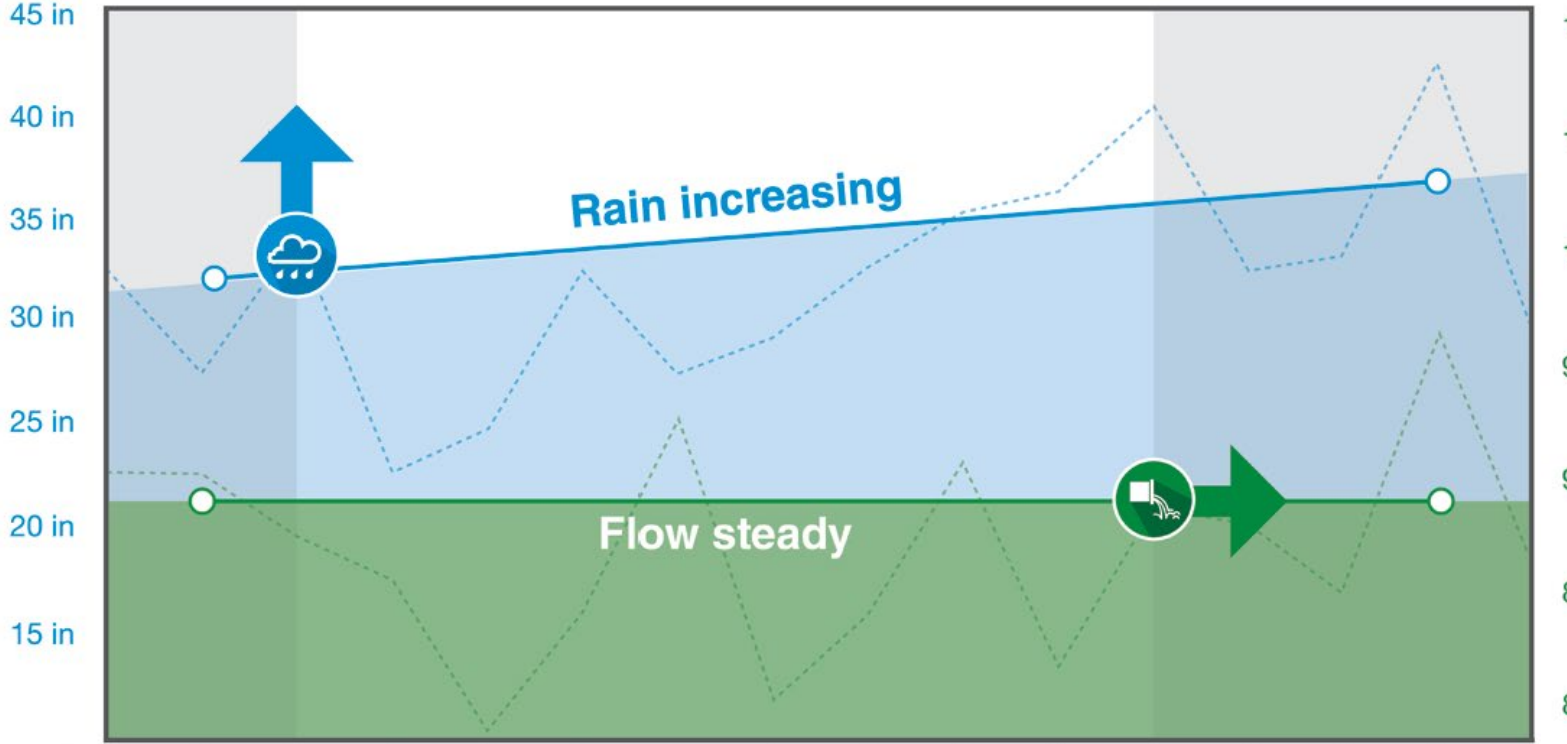


Average precipitation increased 2005-2020

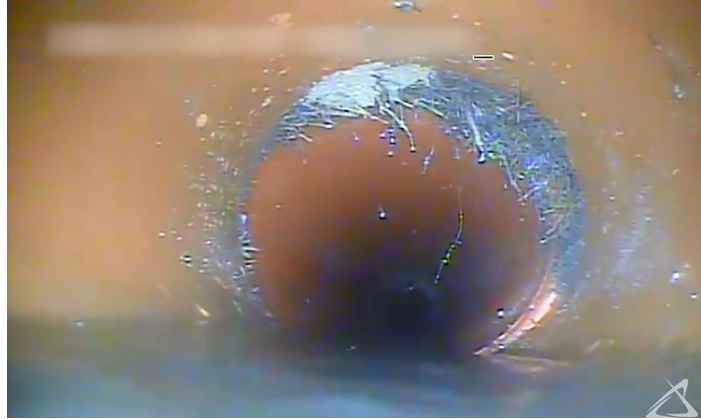


Average flow steady 2005-2020

RAIN



FLOW



Key to public and environmental health, and wastewater affordability.

And More Results



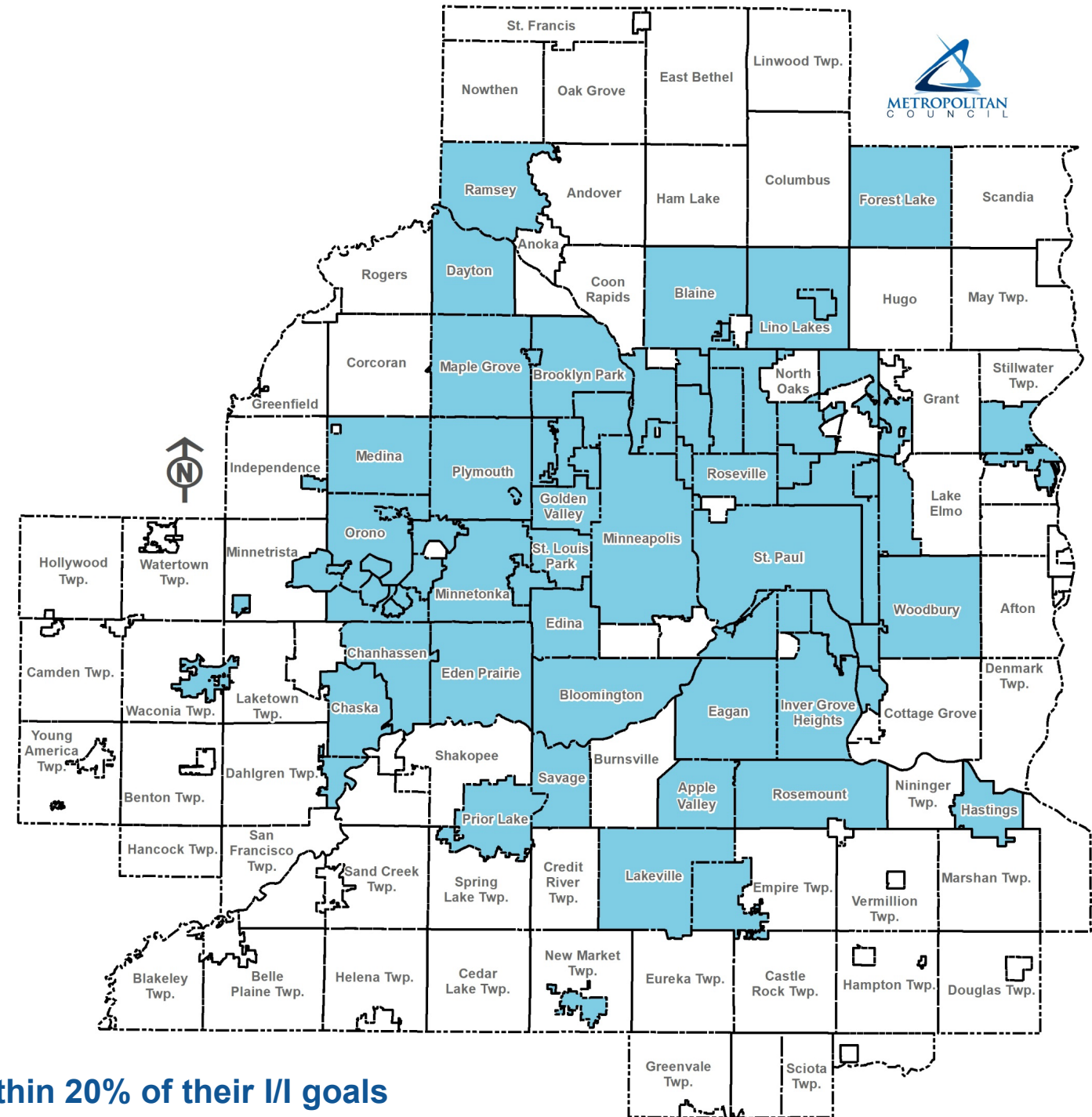
Key Results

- Metropolitan Council has been able to **defer capacity improvements, estimated at \$1B**, that would have been required had I/I not been addressed.
- Regional population has increased by 12% between 2005 – 2019 which has been accommodated within the existing regional collection system, despite increase in annual precipitation.
- Wastewater rates are competitive and are below national average.

Communities Impacted By I/I*

81 COMMUNITIES

- | | | |
|------------------|---------------------|---------------------|
| Apple Valley | Hopkins | Oakdale |
| Arden Hills | Inver Grove Heights | Orono |
| Bayport | Lakeville | Osseo |
| Birchwood | Lauderdale | Plymouth |
| Blaine | Lexington | Prior Lake |
| Bloomington | Lilydale | Ramsey |
| Brooklyn Center | Lino Lakes | Robbinsdale |
| Brooklyn Park | Little Canada | Rosemount |
| Carver | Long Lake | Roseville |
| Centerville | Mahtomedi | Savage |
| Chanhassen | Maple Grove | Shoreview |
| Chaska | Maple Plain | Shorewood |
| Columbia Heights | Maplewood | South St. Paul |
| Crystal | Medicine Lake | Spring Park |
| Dayton | Medina | St. Anthony |
| Deephaven | Mendota | St. Bonifacius |
| Eagan | Mendota Heights | St. Louis Park |
| Eden Prairie | Minneapolis | St. Paul |
| Edina | Minnetonka | St. Paul Park |
| Elko-New Market | Minnetonka Beach | Stillwater |
| Excelsior | Mound | Tonka Bay |
| Farmington | Mounds View | Vadnais Heights |
| Forest Lake | New Brighton | Waconia |
| Fridley | New Hope | Wayzata |
| Golden Valley | Newport | West St. Paul |
| Greenwood | North St. Paul | White Bear Township |
| Hastings | Oak Park Heights | Woodbury |



*Communities have either 1) Exceeded their I/I goals or 2) Come within 20% of their I/I goals

Previous PPII Grant Programs

Foundation Drain Disconnection & Service Line Repair – 2008

- \$800,000
- Funded through Metropolitan Environmental Partnership and Twin City Water Quality Initiative
- 4 participating communities

Foundation Drain Grant:
50% up to \$1000
Service Line Grant:
50% up to \$2000

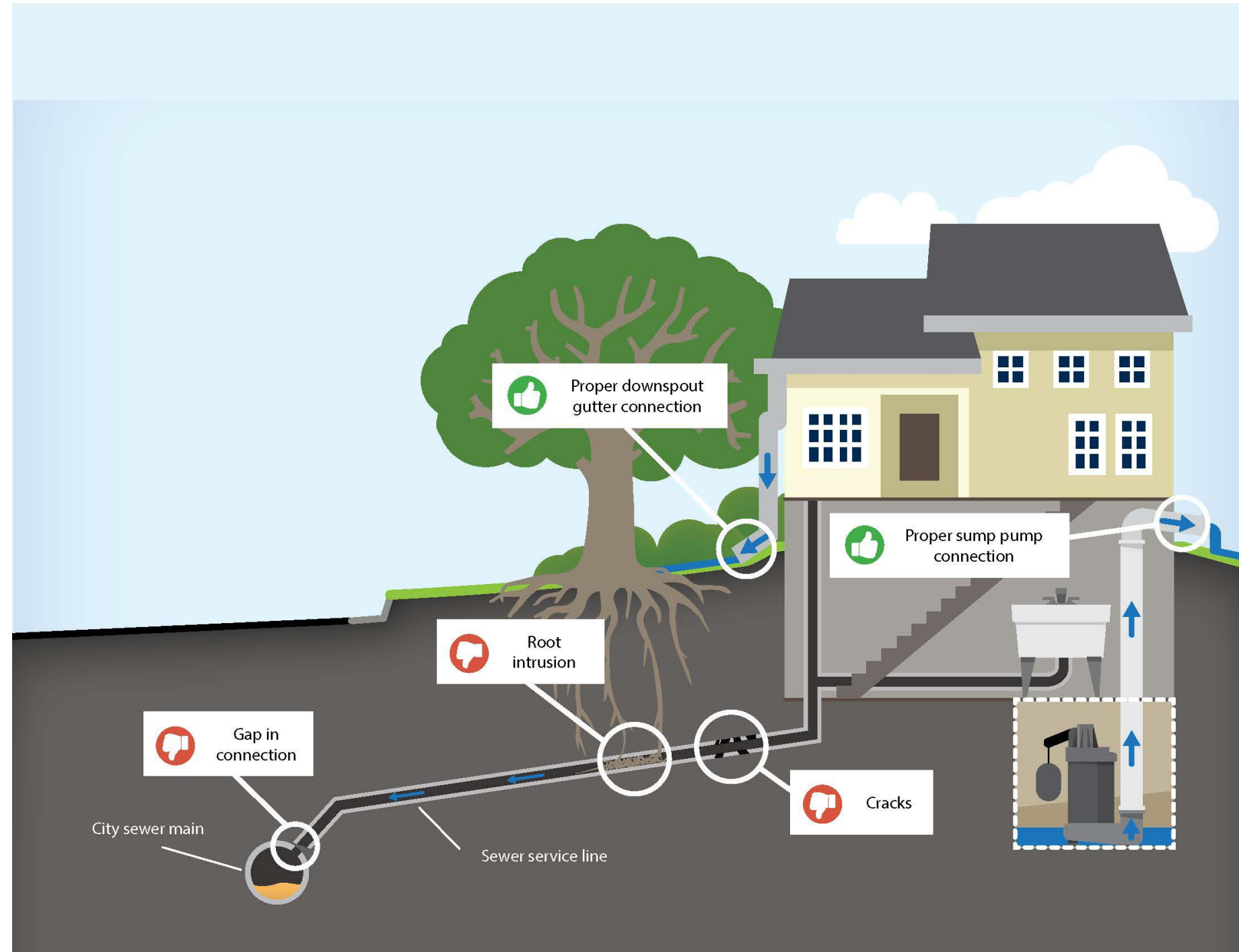
Private Property Grant Program – 2013 - 2014

- \$1 million
- Funded through the Clean Water Land & Legacy Amendment
- 11 participating communities

Grant:
1/3 of actual, reasonable
and verifiable repair costs,
limited to \$2,000/project.

A Need for Private Property I/I Funding

- Met Council previously did not have authority to use its own revenues to assist cities with private property I/I programs.
- The cost to repair or replace a private service lateral ranges can be as much as \$8,000 or more.
- State bond funds cannot be used for private property investigation nor improvements.
- Multiple attempts to obtain State Clean Water Legacy funding was only successful once in 2013, resulting in an unreliable and inconsistent funding source for property owners to investigate and repair private service laterals.



2023 Private Property Grant Program



Topics for Discussion

- Eligible work
- Reimbursement structure
- Administration processes
 - Community
 - Resident
- Tax Implications
- Equity component

Task Force Directions



Work

- Eligible Work:
 - Private lateral repair and/or replacement
 - Foundation drain disconnections & rerouting sump pump to outdoors
 - Lateral televising and cleaning costs if:
 - Applicant meets equity need
 - TV and cleaning result in repair or replacement of sewer lateral
- Reimbursement – 50% of eligible costs up to \$5,000
- Cap at \$TBD

Task Force Directions, cont'd



Eligibility

- Municipalities exceeding their I/I goals or are within 20% of their goals

Taxable Income

- Goal - No taxable income for resident
- Option for municipalities to pay for repair work
- Does not remove residents from other programs

Ideas for equitable distribution



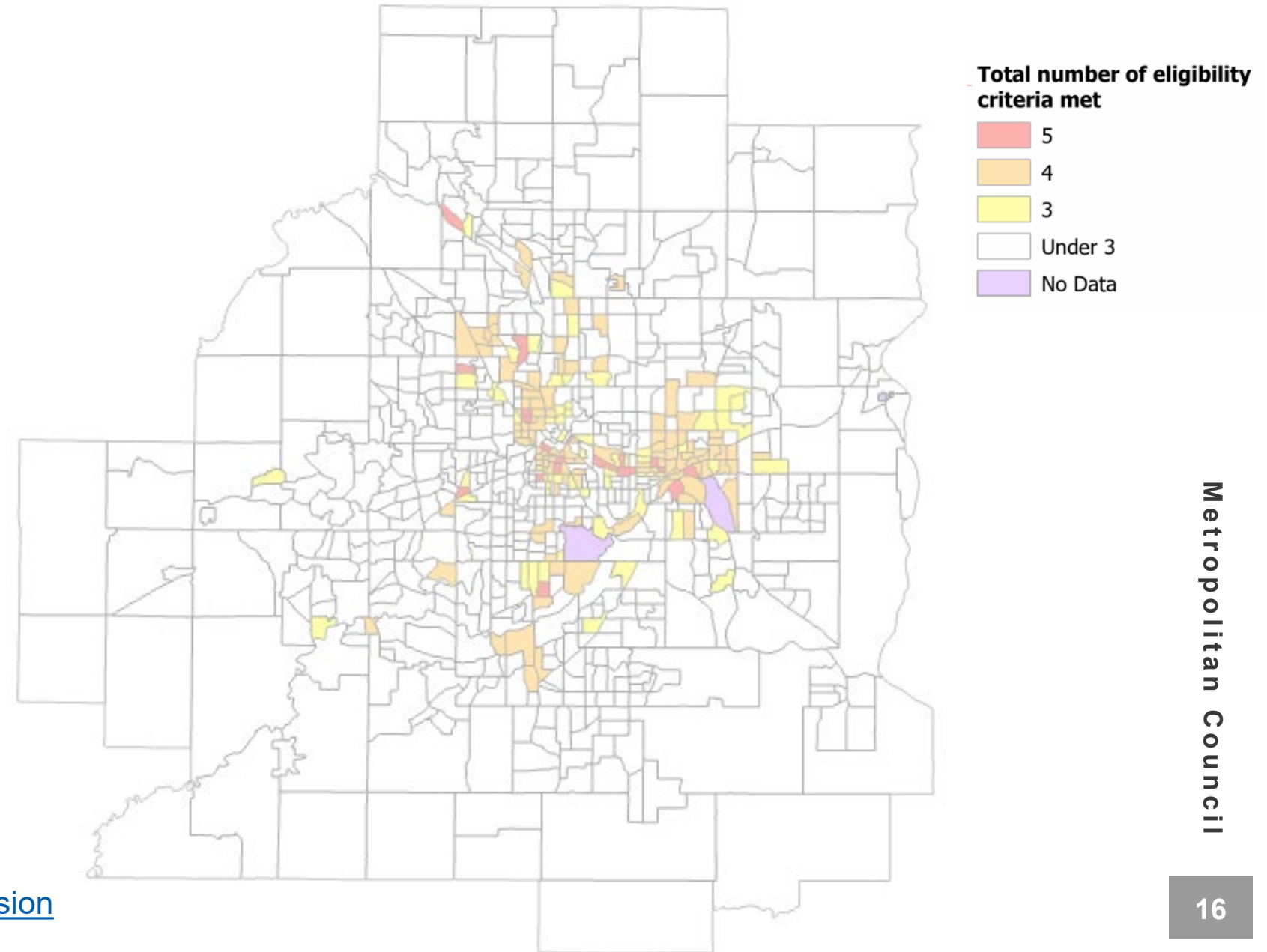
Flexibility allows participating municipalities to use funds in different ways....

- Balance goals of resident financial support and environmental benefits of I/I mitigation
- Street reconstruction/improvement projects
- Point-of-Sale assistance
- Single resident, any location within community
- Areas known for I/I or higher potential of I/I
- Sump pump disconnections
- Shared lateral/mains

HF - 1514

Affordability Criteria

1. 20 percent or more of the residents have income below the federal poverty thresholds;
2. the tract has a United States Centers for Disease Control and Prevention Social Vulnerability Index greater than 0.80;
3. the upper limit of the lowest quintile of household income is less than the state upper limit of the lowest quintile;
4. the housing vacancy rate is greater than the state average; or
5. the percent of the population receiving Supplemental Nutrition Assistance Program (SNAP) benefits is greater than the state average



Communication Requests

Requests:

- Providing program details and benefits
- One-pager about the program to send to residents and post on website
- Procedure guide to explain the application process
- More general information about I/I
- Language for inclusion in a letter that clearly states the requirements
- General outreach materials and a website. Application site or forms

Next Steps - Task Force Timeline

Milestones

Date	Milestone
November 2022	Chair Recommends Membership
January 2023	First Meeting of Private Property I/I (PPII) Task Force
Late May 2023	Final Task Force Recommendation Report
June 2023	PPII Grant Program Developed
August 2023	PPII Grant Program Approved by Council
September 2023	Public Hearing
October 2023	Public Outreach and Program Notification
January 2024	PPII Grant Applications Accepted



Thank You

Wendy Wulff

Council Member, District 16
Metropolitan Council

