

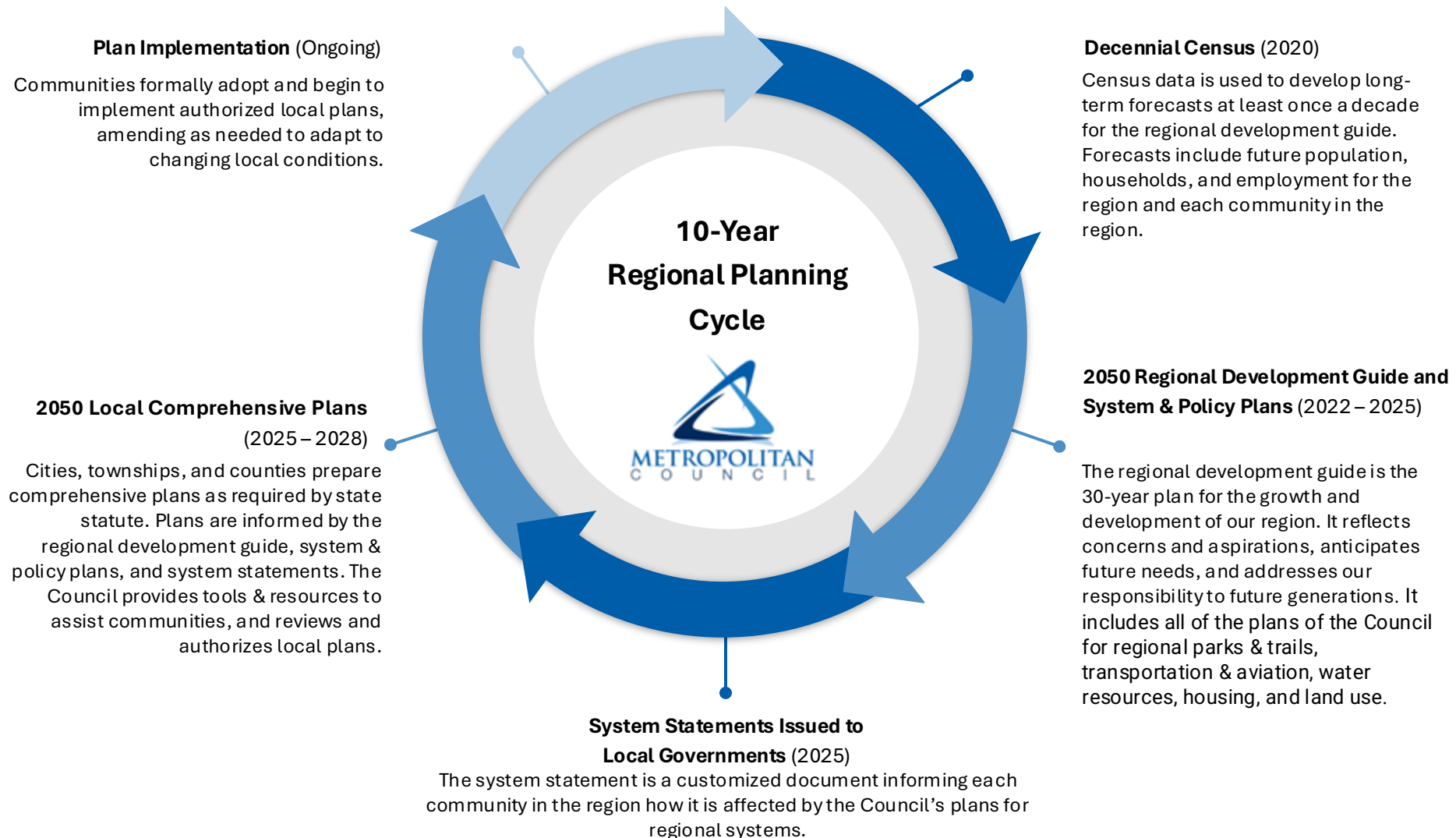
Housing Policy Plan

For Equity Advisory Council

July 2025



10-Year Regional Planning Cycle



Regional Vision: Imagine 2050



*A prosperous,
equitable, and resilient
region with abundant
opportunities for all to
live, work, play,
and thrive.*



Housing Policy



Housing Policy Plan: Imagine 2050



The right to housing is a foundation for health, social and economic well-being. The Imagine 2050 Housing Policy Plan guides the region to create safe, dignified and affordable homes that give all residents a choice of where to live.

Met Council Roles in Housing



Planning, Policy, Implementation, Rent Assistance

- Develop and implement the *Housing Policy Plan (HPP)*
- Provide rental assistance to low-income households
- Provide data and analysis to understand trends and inform policy
- Define local government shares of the regional need for affordable housing
- Review local comprehensive plans to ensure that communities are meeting the housing requirements in the Metropolitan Land Planning Act
- Fund housing development through the Livable Communities Act programs
- Provide technical assistance and support to local governments

The Moline, a market-rate housing, benefited from a Livable Communities Demonstration Account to the City of Hopkins to develop The Artery.

Resident Perspectives to Imagine 2050 HPP

Engagement Themes

Chapter Topics

Objectives

Autonomy / Choice

Proximity

1 Proximity and Choice

- Fair Housing & Geographic Choice
- Options To Own & Rent

Dignity

Safety

2 Dignity and Safety

- Stability
- Quality

Connected & Wellbeing

3 Connection and Wellbeing

- Cultural Connection & Wellbeing
- Environment
- Equity

Housing Policy Plan Objectives

Proximity & Choice

Fair Housing & Geographic Choice

People regardless of ability, age, financial status, race, and family size, can live in a community they choose

Options to Own or Rent

Rental and ownership options are available to all households regardless of income

Dignity & Safety

Quality

Affordable housing is built to a high standard and maintained, safe, and accessible for all residents

Stability

Stable, affordable, and dignified places to live are available to everyone, especially those experiencing housing insecurity and homelessness

Connection & Well-being

Cultural Connection & Well-being

Everyone has access to homes, not just housing

Equity

Repair historic and ongoing injustice in housing practices and outcomes

Environmental Justice

Housing in our region is resilient to climate change impacts and furthers environmental justice

Housing Policy Strategies: The Three Ps

Provide

- Federal and state assistance
- Research and data
- Technical assistance

Plan

- Local Comprehensive Plan housing consistency standards

Partner

- Building more affordable and accessible housing
- Development in the region
- Minnesota Housing RFP, other public funding partners
- Healthy & safe buildings
- Supporting city staff on housing needs

More Direct

Less Direct

Partnership Actions: Examples

Fair Housing & Geographic Choice

Explore opportunities to partner at the federal, state, and local level to advance the evolution of affordability standards to be more reflective of resident experience.

Options to Own & Rent

- Increase collaboration with local and county housing organizations to prioritize and fund programs that increase, through development or preservation, all affordable housing tenures (rental, cooperative, limited and/or full homeownership)

Quality

- Partner with community organizations to develop resources, and access to legal support when needed, to ensure people have continued access to quality living environments.
- Partner with nonprofit providers to promote tenant and landlord rights and responsibilities and support renter initiatives

Stability

- Engage with people with lived experience of homelessness to guide Met Council policies, programs, and plans and compensate participants who serve in a consulting role.

Partnership Actions: Examples

Environmental Justice

- Integrate the Met Council's Climate Action Work Plan commitments and strategies into housing policies and programming.
- Explore opportunities to partner with organizations to further implement environmental justice efforts in housing policy and programming.

Equity

- In all the Met Council's housing work, develop respectful and meaningful partnerships with Tribal governments and organizations, housing advocacy groups, & homeless coalitions, particularly those that have majority Black, American Indian, people of color and low-income representation.

Cultural Connections & Well-being

- Continue collaboration with the Blue Line Anti-Displacement Work Group
- Engage with housing stakeholders such as neighborhood groups, nonprofits, and research organizations to align Met Council displacement risk assessment with other equity scorecards and anti-displacement tracking efforts around the region.

Discussion



Questions

- What should the Met Council do to be a good partner?
- With whom should we partner to advance our housing policy objectives?
- What kind of partnerships do cities need as they start to write the housing elements of their own 2050 comprehensive plans?



Sarah Berke

Senior Manager, Livable Communities & Housing

sarah.berke@metc.state.mn.us

Maia Guerrero-Combs

Planning Analyst, Housing

maia.guerrero-combs@metc.state.mn.us



Appendix: Regional housing need (progress in current decade)



Affordable Housing Production, 2021-2023

For households earning:	Homes needed for growth (2021-2030)	Number of homes built, 3 years	% of decade's need
<\$40,000 (30% AMI)	21,523	1133	5%
\$40,000 - 66,000 (50% AMI)	10,969	3,019	28%
\$66,000-104,000 (80% AMI)	10,900	13067	120%