

Division Overview

Community Development

9/14/2020

Blue Ribbon Commission



Community Development



Regional Planning

- Regional Parks & Trails
- Review of Comprehensive Plans & Technical Assistance
- Livable Communities Act Grant Programs

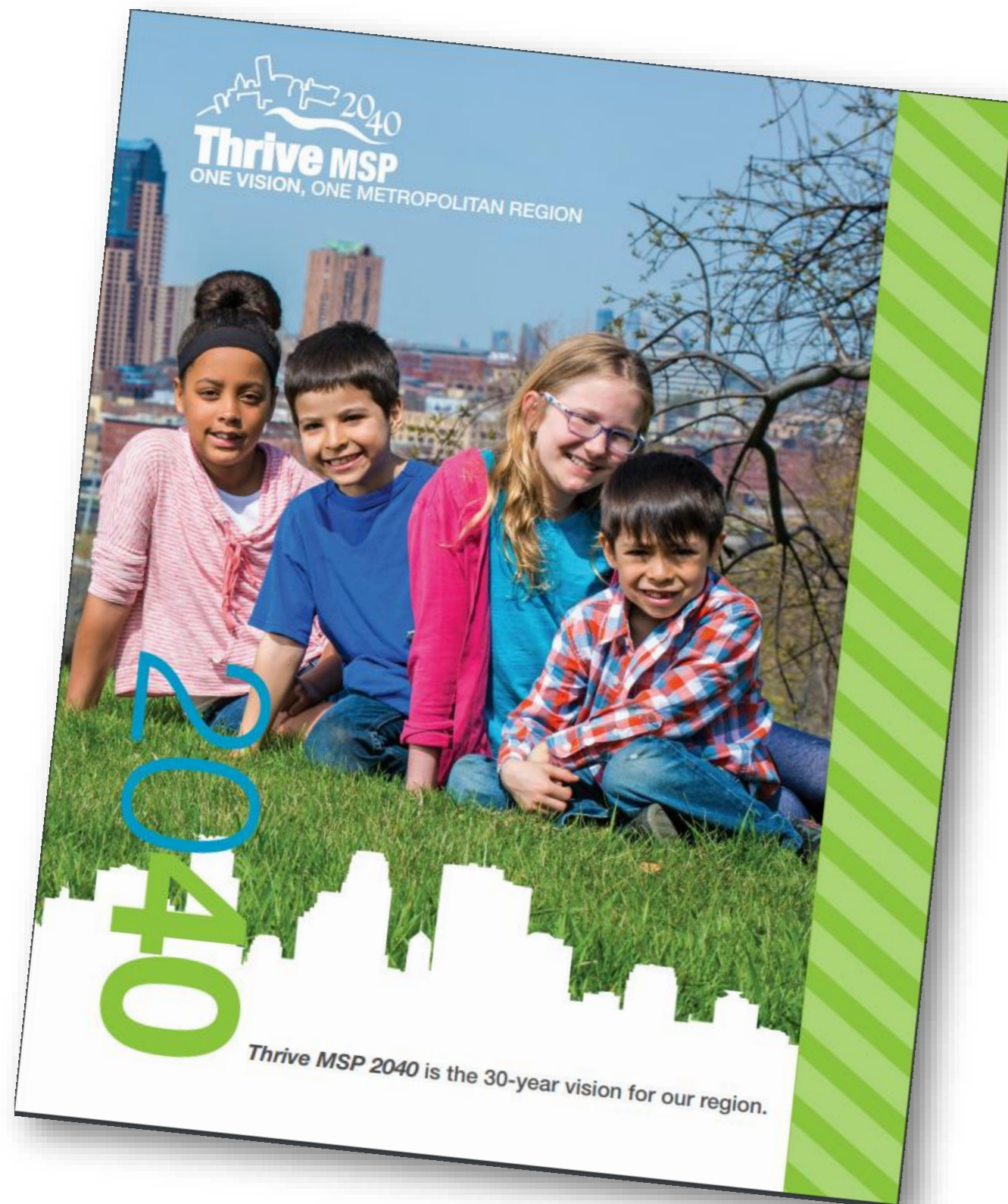


Research of Regional Issues



Metropolitan Housing and Redevelopment Authority

Coordinate planning to guide the growth and development of the region



10-year Regional Planning Cycle



Regional
Development
Guide
2013-2014

System and
Policy Plans
2014-2015

Decennial
Census
2010-2011

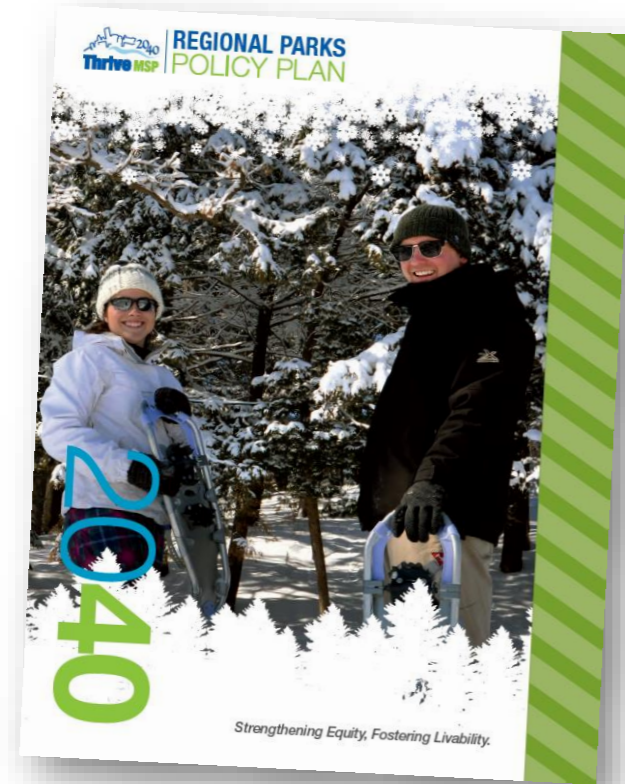
Local
Comprehensive
Plans
2018

System
Statements
2015
*Local Planning
Handbook*

Minn. Stat. § 473.851 – 473.871
Minn. Stat. § 473.173
Minn. Stat. § 473.175
Minn. Stat. §473.191

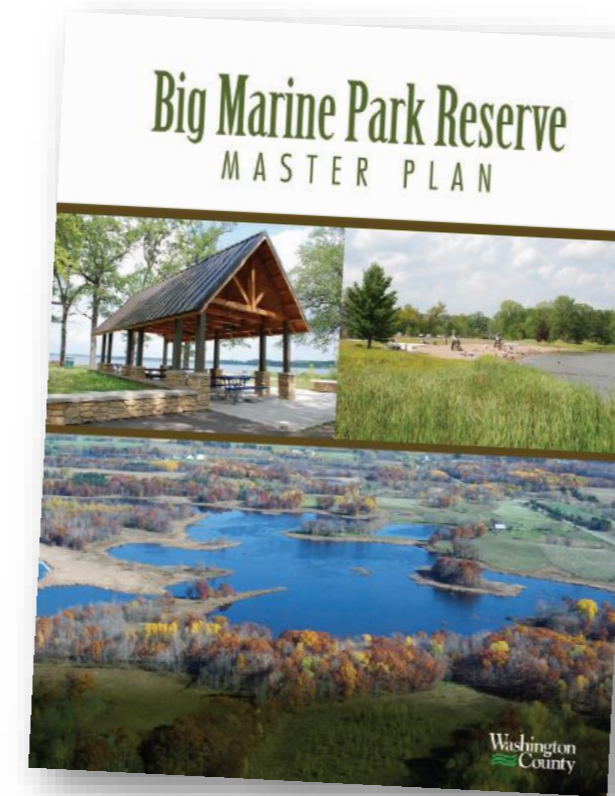
Planning and Funding the Regional Parks System

Regional Parks Policy Plan



- Update the Regional Parks Policy Plan every four years
- Identify which parks and trails are part of the System

Master Plans



- Review and approve Master Plans developed by implementing agencies

Regional Parks Funding

- Distribute state and regional funding to the implementing agencies for operations, acquisition, and development projects

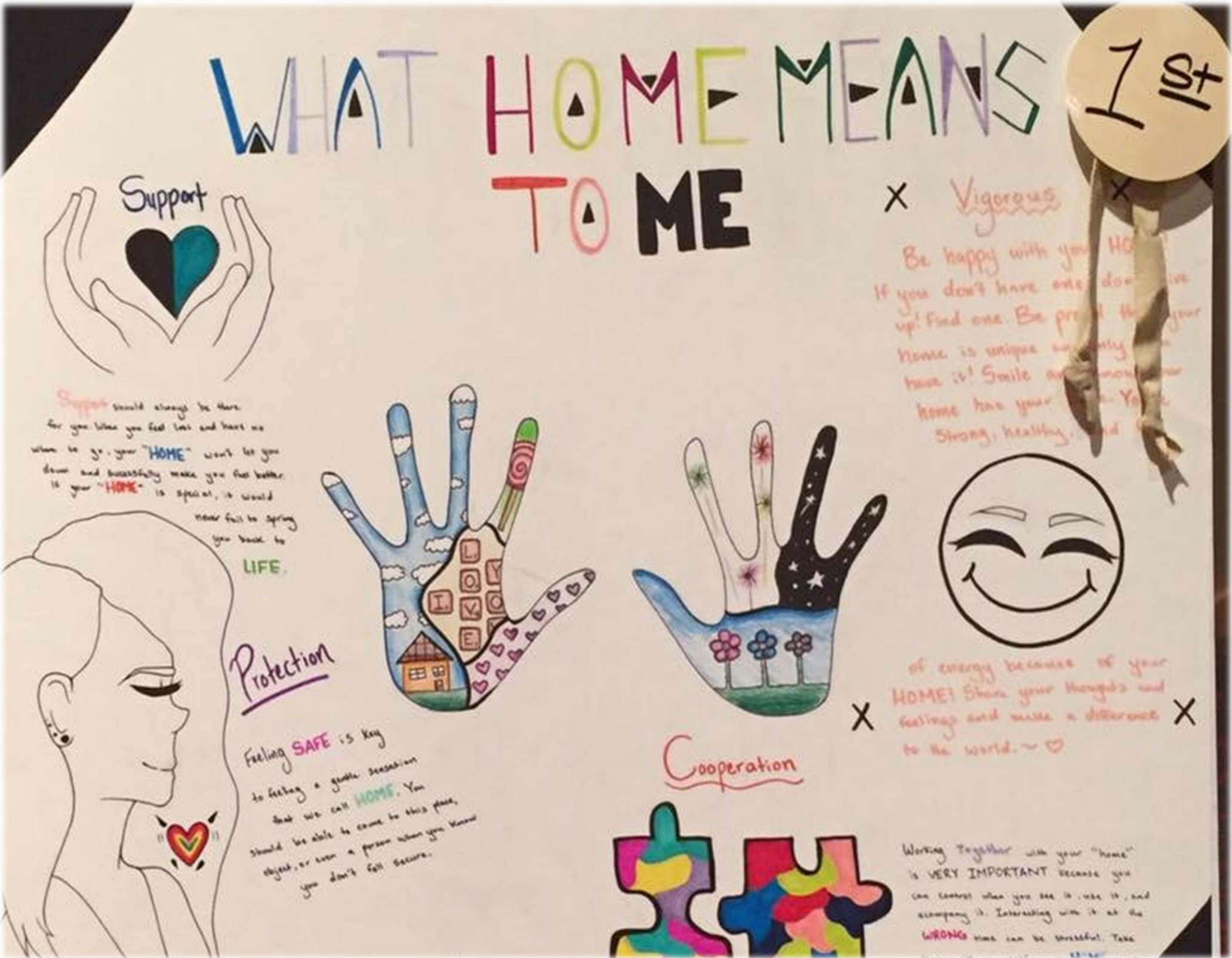
Metropolitan Livable Communities Act programs

- Create compact, connected development patterns
- Help to change long-term market incentives that adversely impact the creation and preservation of living wage jobs
- Create incentives for developing communities to include a full range of housing opportunities
- Create incentives to preserve and rehabilitate affordable housing the fully developed area



Metro Housing and Redevelopment Authority

- Created by Minnesota Legislature in 1974 to administer rent subsidy programs for low income families
- Largest administrator of tenant-based rental assistance (including federal Housing Choice Vouchers) in the state:
 - 7,200 program households
 - Roughly \$65 million annually in rent payments
 - 2,000 active landlords



Research on Regional Issues

Answering questions, finding meaning, informing policy and decision-making, adding value and interpreting data

Reports

METROSTATS
Exploring regional issues that matter

What a difference a rate makes: population growth, housing production, and vacancy in the Twin Cities region since 2010
August 2018

PLAYFEATURES
Research on the Twin Cities Regional Parks & Trails
July 2018

2017 Regional Parks System Annual Use Estimate

<https://metro council.org/data>
Minn. Stat. § 473.24
Minn. Stat. § 473.242
Minn. Stat. § 85.53
Minn. Stat. § 473.351

Dashboards, Apps, Data Portals

VISUALIZING REGIONAL RACIAL DISPARITIES

Exploring economic disparities by race and ethnicity in U.S. metros

The Community Development Research team has produced an annual analysis of disparities by race and ethnicity on key economic measures since 2013. The findings of this research are largely consistent: While the 16-county Twin Cities metro area continues to rank highly among other U.S. metros for our impressive employment and homeownership rates and low poverty rate. However, the Twin Cities metro also has the nation's largest disparities between white residents and residents of color in these measures.

Despite gains for some groups on some measures, there have been no notable changes in this overall pattern. This underscores the persistence of racial and ethnic disparities in the Twin Cities metro, and their potential to further undermine the region's prosperity and economic competitiveness.

This interactive tool is an invitation to the region's stakeholders to explore this metro-area data in new ways to inform strategies and solutions toward advancing equity and eliminating racial and ethnic disparities.

COMMUNITY PROFILES

Community Profile for Hennepin County

Each chart in the Community Profiles can be saved in JPEG, PNG or PDF formats or printed as a standalone page. To save as an image, right-click on the chart and select a format option. Once the "capturing data" process is over, review the saved charts on the CHART EXPORTS tab. Click the "save" button for any chart export listing you wish to save. Please note that the data source is not included in the saved images.

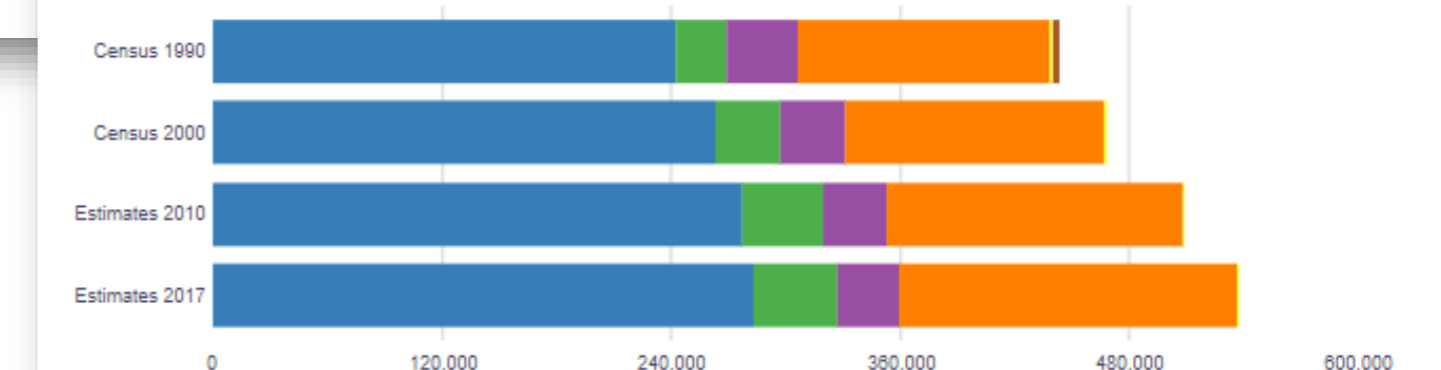
Please Contact Us by Clicking Here

Select another area:

OVERVIEW | PEOPLE | ECONOMY AND JOBS | INCOME AND POVERTY | HOUSING | COMMUTING | LAND USE AND DEVELOPMENT | CHART EXPORTS

Housing Type
Housing Units Permitted
New Affordable Housing
Housing Tenure and Vacancy
Homeownership
Median Housing Value
Median Gross Rent
Count of Existing Home Sales by Price
Households Experiencing Housing Cost Burden

Housing Type in Hennepin County



Division Overview

Metropolitan Transportation Service (MTS)

9/14/2020

Blue Ribbon Commission



MTS Division Responsibilities

Planning

- Serves as the region's federally required Metropolitan Planning Organization (MPO)
- Performs long-range transportation system planning for all modes
- Shorter term federal transportation funds programming

Transit operations

- Provide, contract for, and coordinate metropolitan transit operations
- Provide financial assistance to local transit providers

Grants

- Administer transportation grants to local agencies and transit operators

State and federal law – requirements

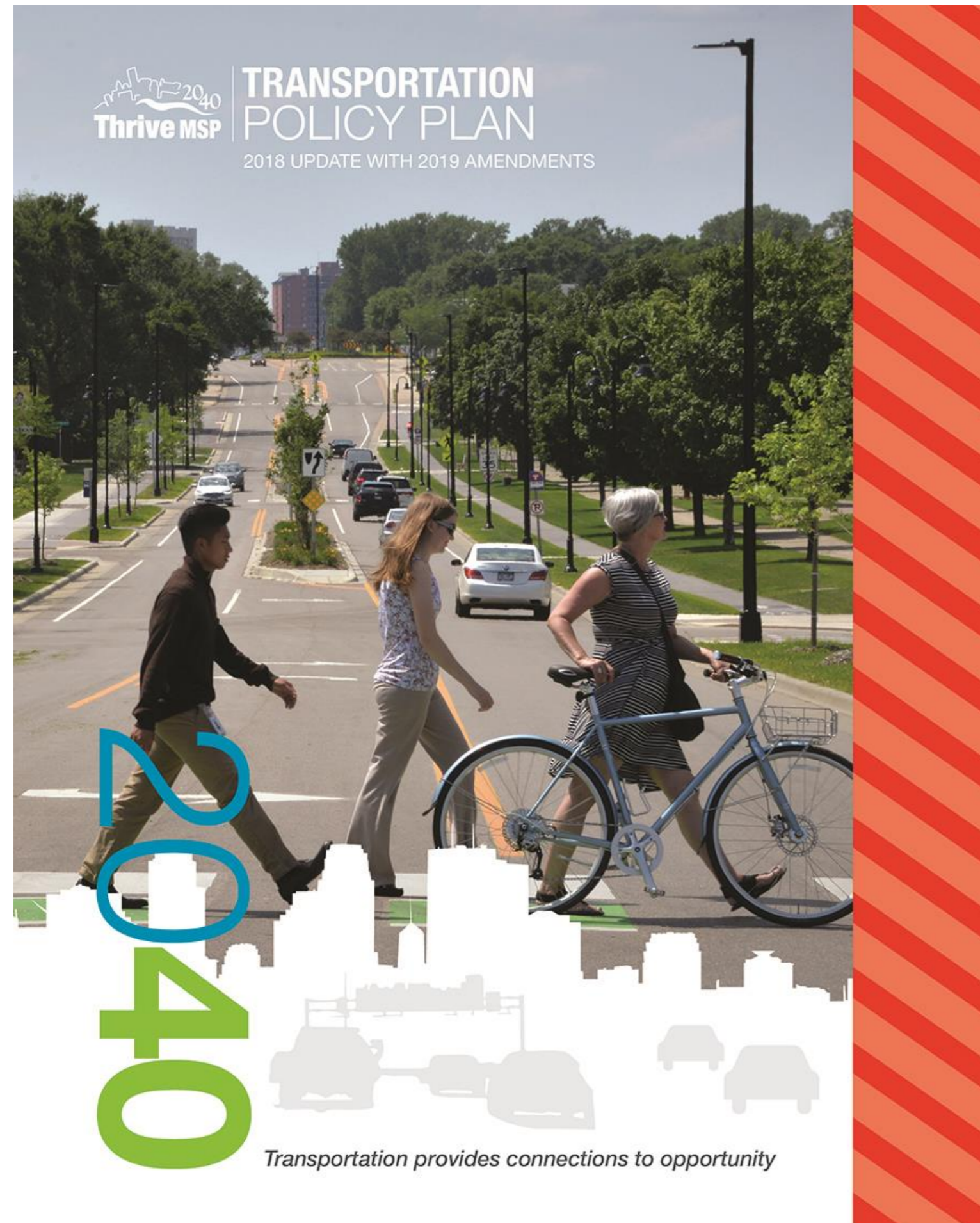
State Law – Minnesota Land Planning Act (MS 473.146)

“The Council is the designated planning agency for any long-range comprehensive transportation planning...[and] shall assure administration and coordination of transportation planning with appropriate state, regional and other agencies, counties, and municipalities.”

Federal Law and Rules

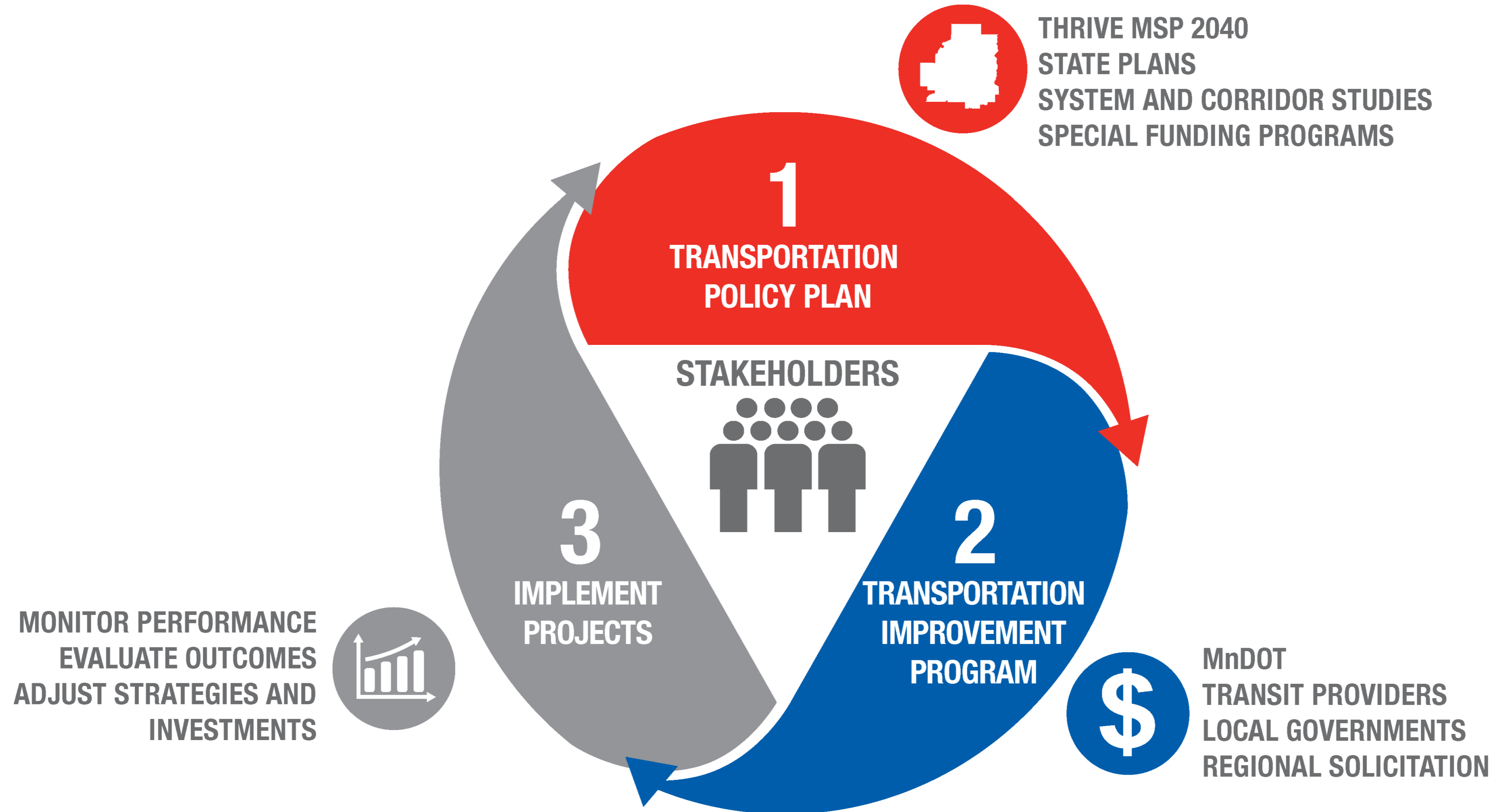
- Metropolitan Transportation Planning 23 USC §134
- National Environmental Policy Act
- 1990 Clean Air Act and Conformity Rule
- Title VI Environmental Justice

State transportation planning

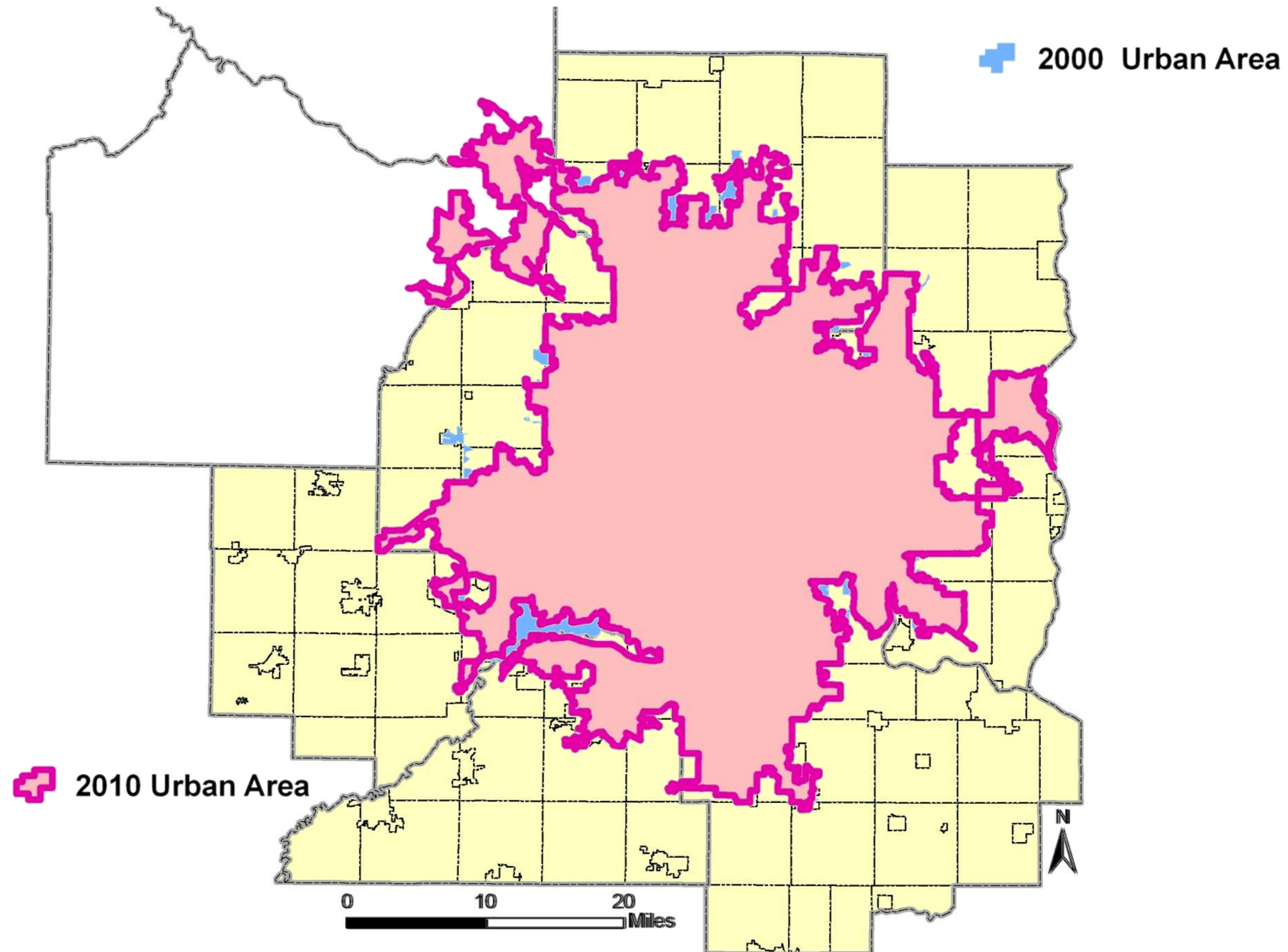


- Adopt a long-range comprehensive policy plan for transportation
- The Transportation Policy Plan
 - Represents two of four required regional system plans: surface transportation and aviation
 - Provides guidance on the regional transportation system for developing local comprehensive plans
- Council reviews local plan consistency and conformance with regional system plans

Metropolitan Planning Organization

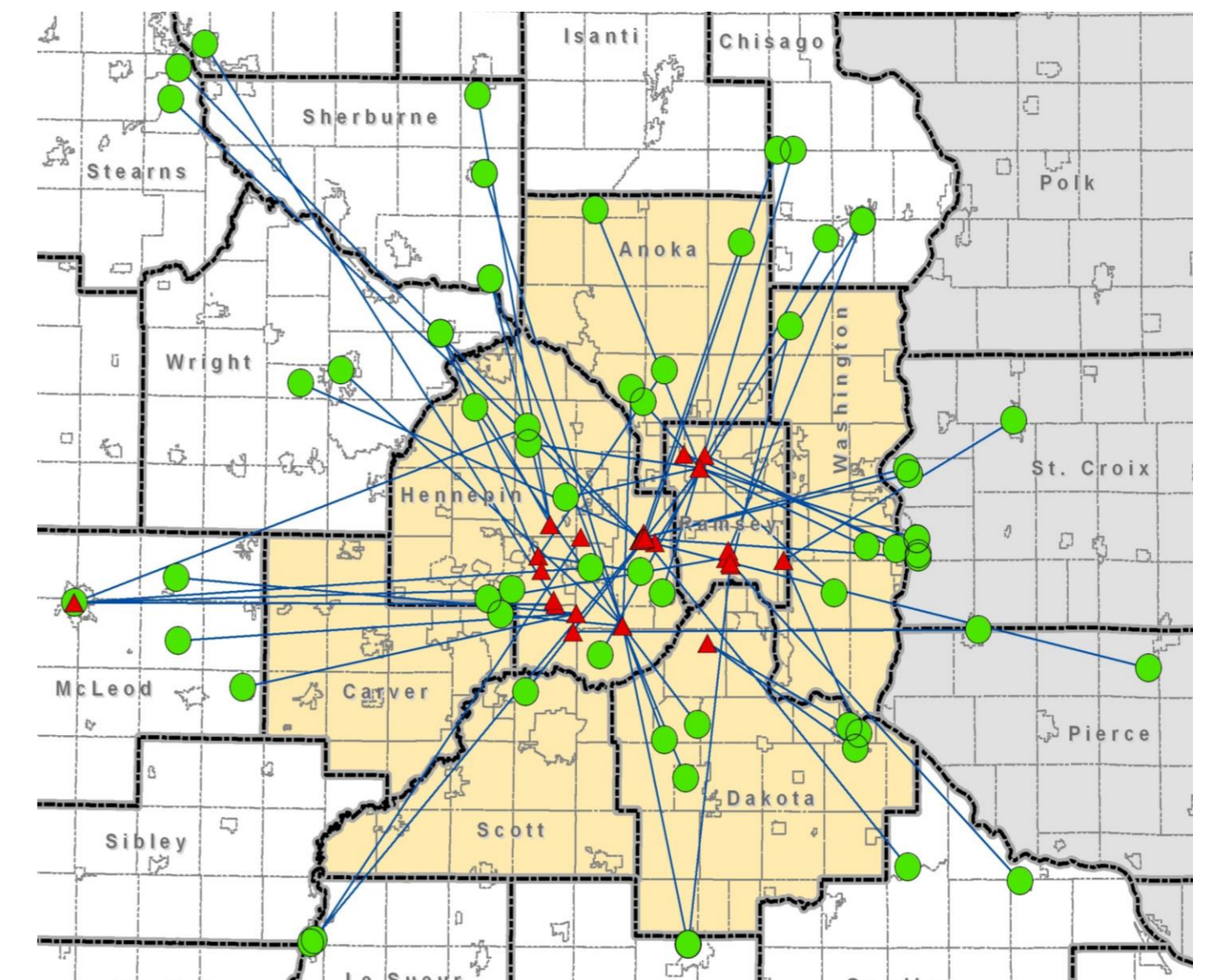
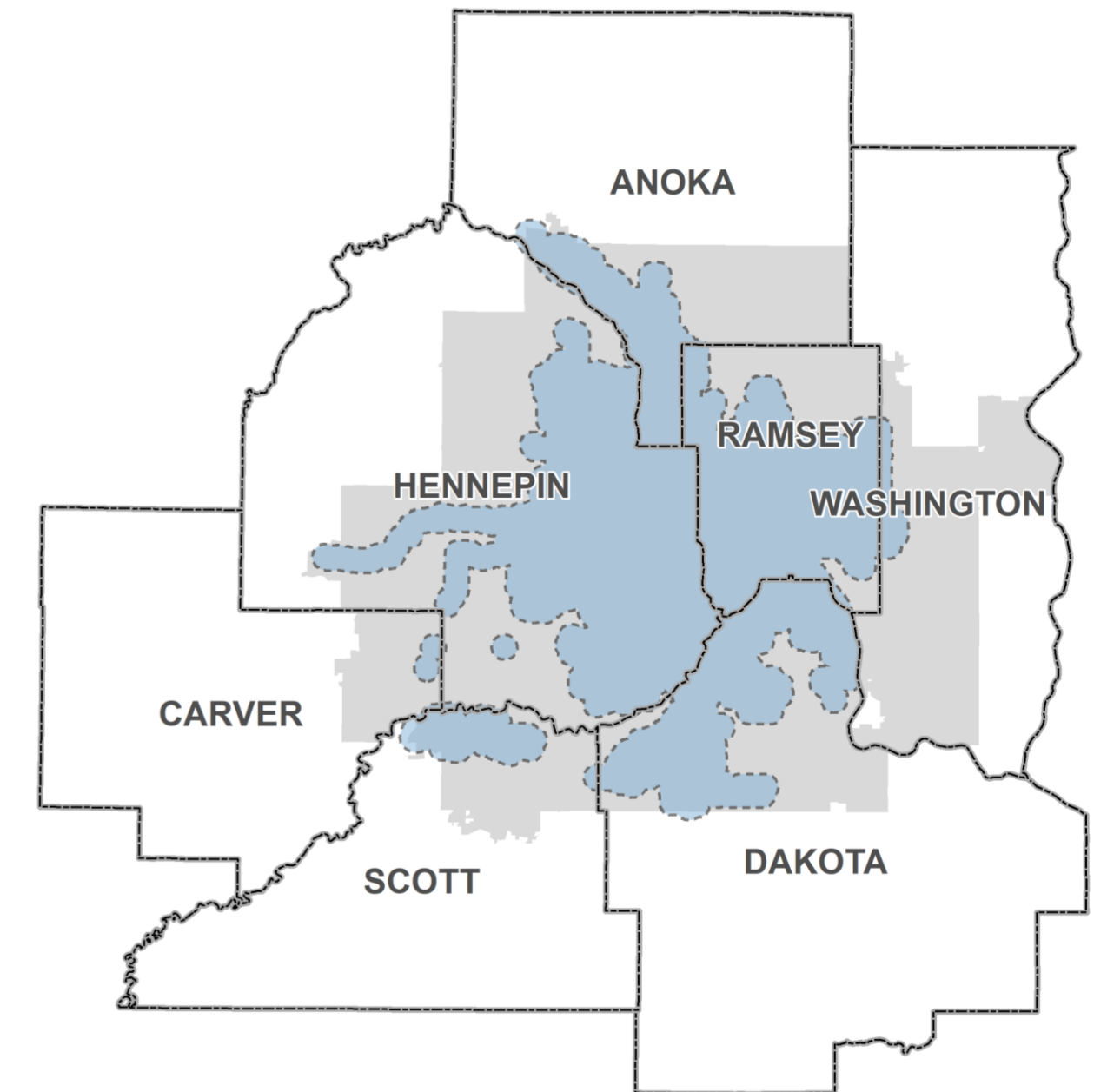


Metropolitan Planning Organization



MTS Family of transit services

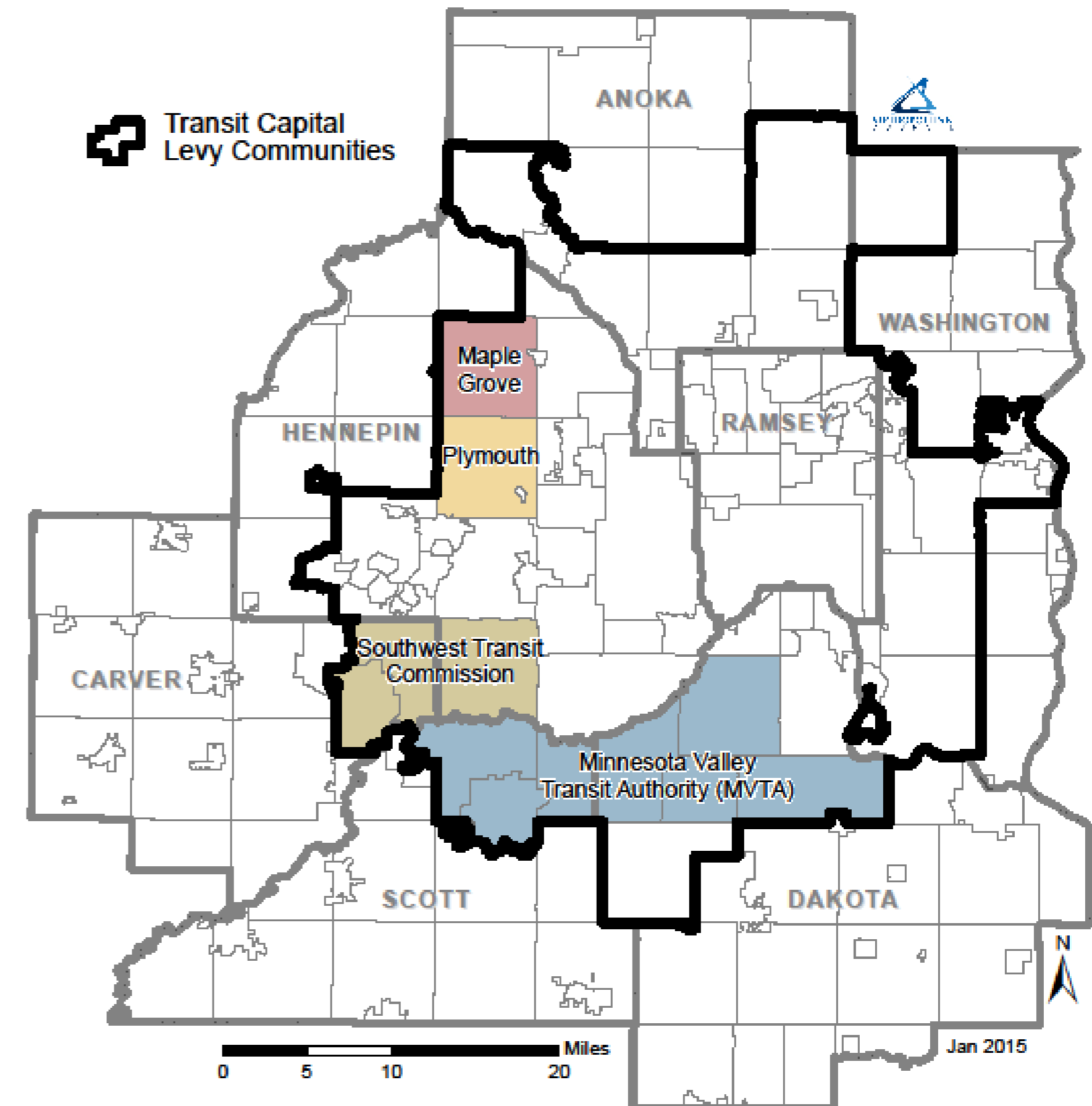
- **Fixed route** – backbone of public transit
- **Metro Mobility** – ADA service (blue)
 - Required by Federal Law
 - Complementary to fixed route
- **Metro Mobility - Non-ADA service (grey)**
 - ADA certified riders traveling outside ADA service area
 - Required by state law
- **Transit Link**
 - Shared-ride public transport where regular route transit is infrequent or unavailable
- **Metro Vanpool**
 - Vanpools have five to 15 people sharing the ride to and from work an average of three or more days a week.



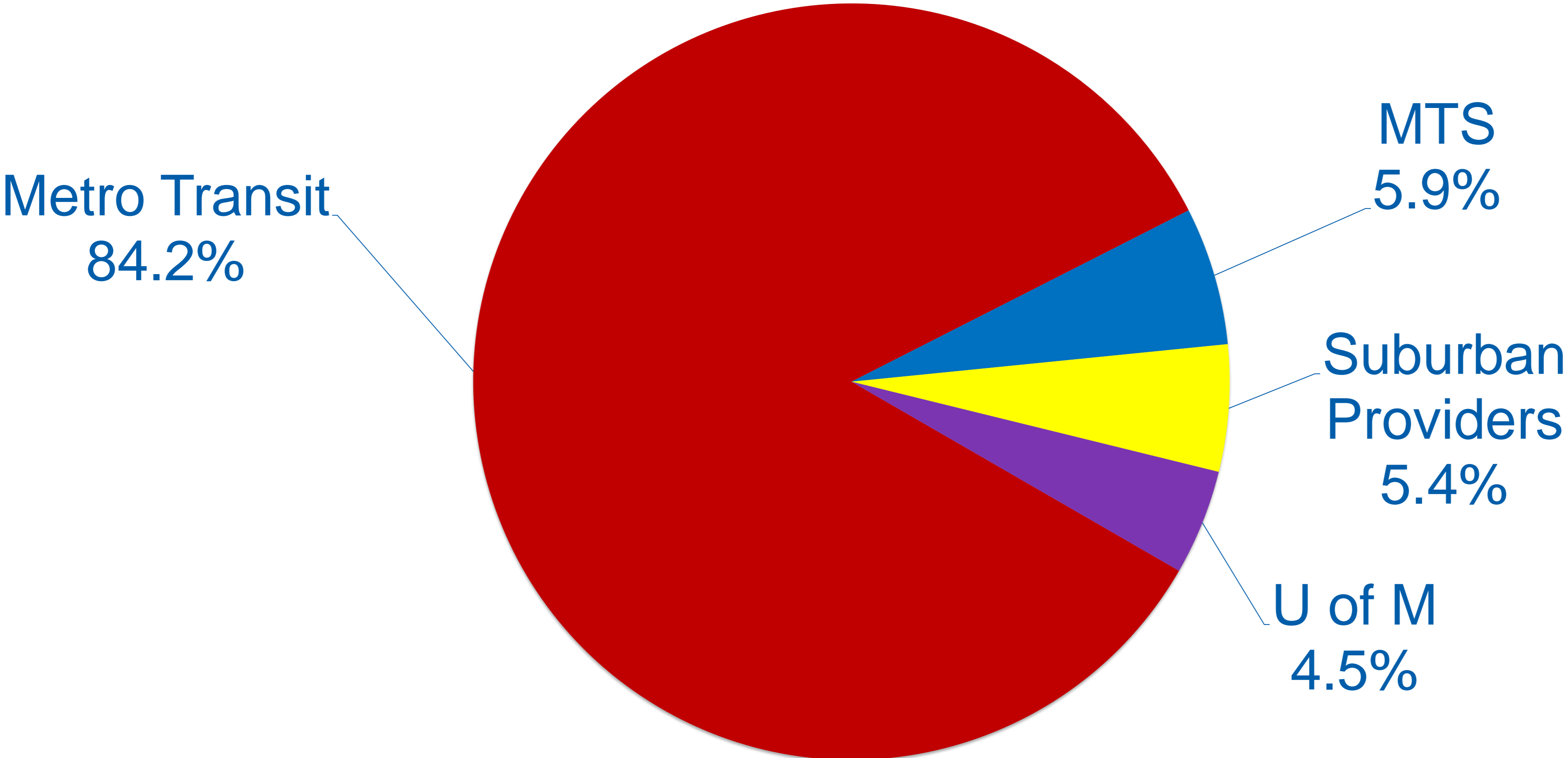
Regional Services

- Fleet for Regional Services
- Technology
- Grants management
- Regional Policy
- Regional Provider Performance Reporting
- Support of Suburban Transit Providers (STPs)
 - Est. 1981 chapter 363, sec 44

Suburban Transit Providers



2019 regional transit ridership – 91.6 million



Division Overview

Metro Transit Division

9/14/2020

Blue Ribbon Commission



Metro Transit – Who We Serve

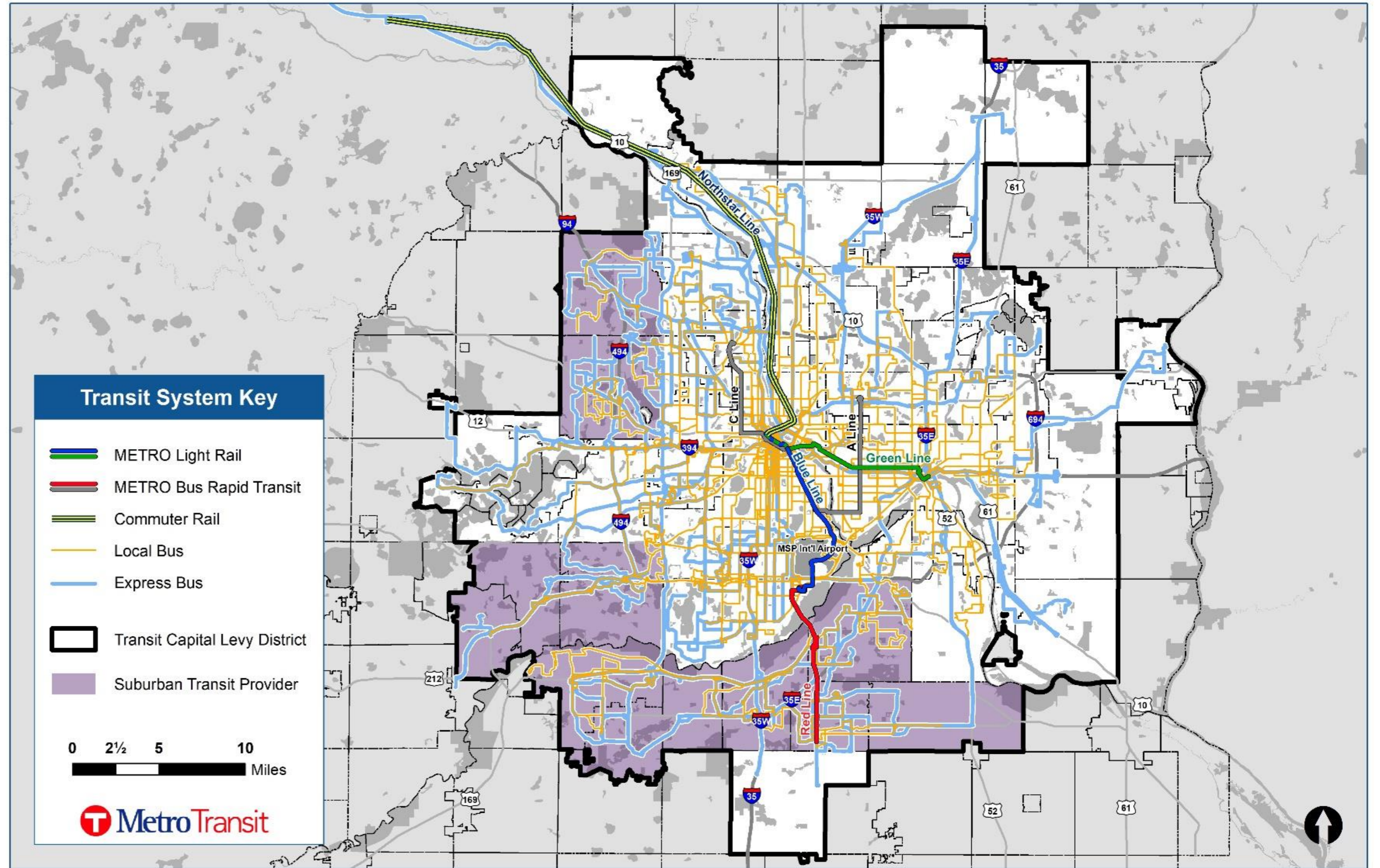
Metro Transit provided over 84% of the nearly 92 million transit rides regionwide in 2019

Our riders are:

- Mostly under 35 years old
- 41% have a household income under \$35K annually
- 45% identify as BIPOC, compared to 27% regionwide

Geography:

- 907 square miles
- 90 cities



Metro Transit – Service

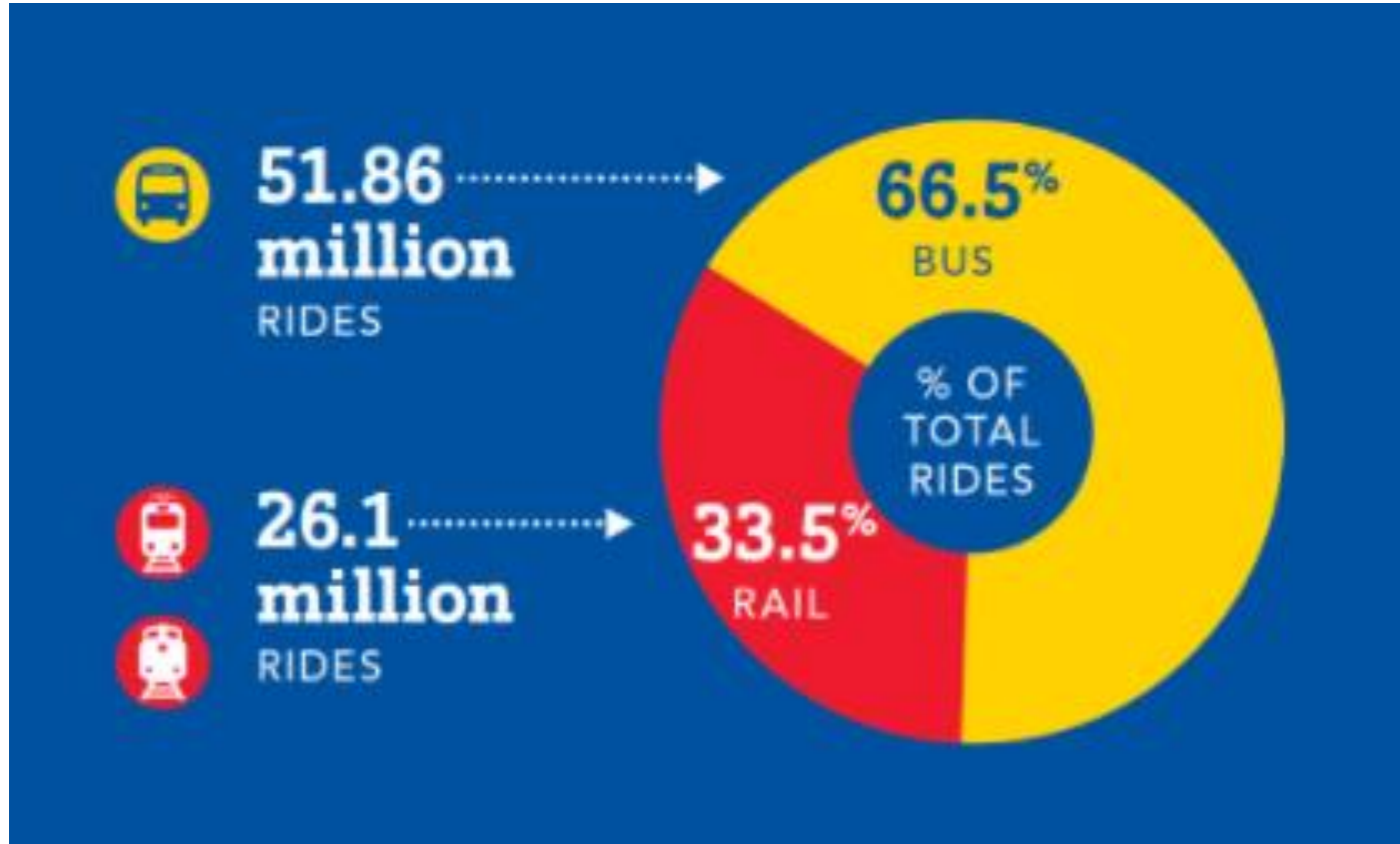
125 Routes in 2019

- 51 urban local bus routes
- 61 express bus routes*
- 10 suburban local bus routes
- 2 light rail – METRO Blue Line and METRO Green Line
- 1 commuter rail – Northstar

* Includes Maple Grove Transit routes operated by Metro Transit



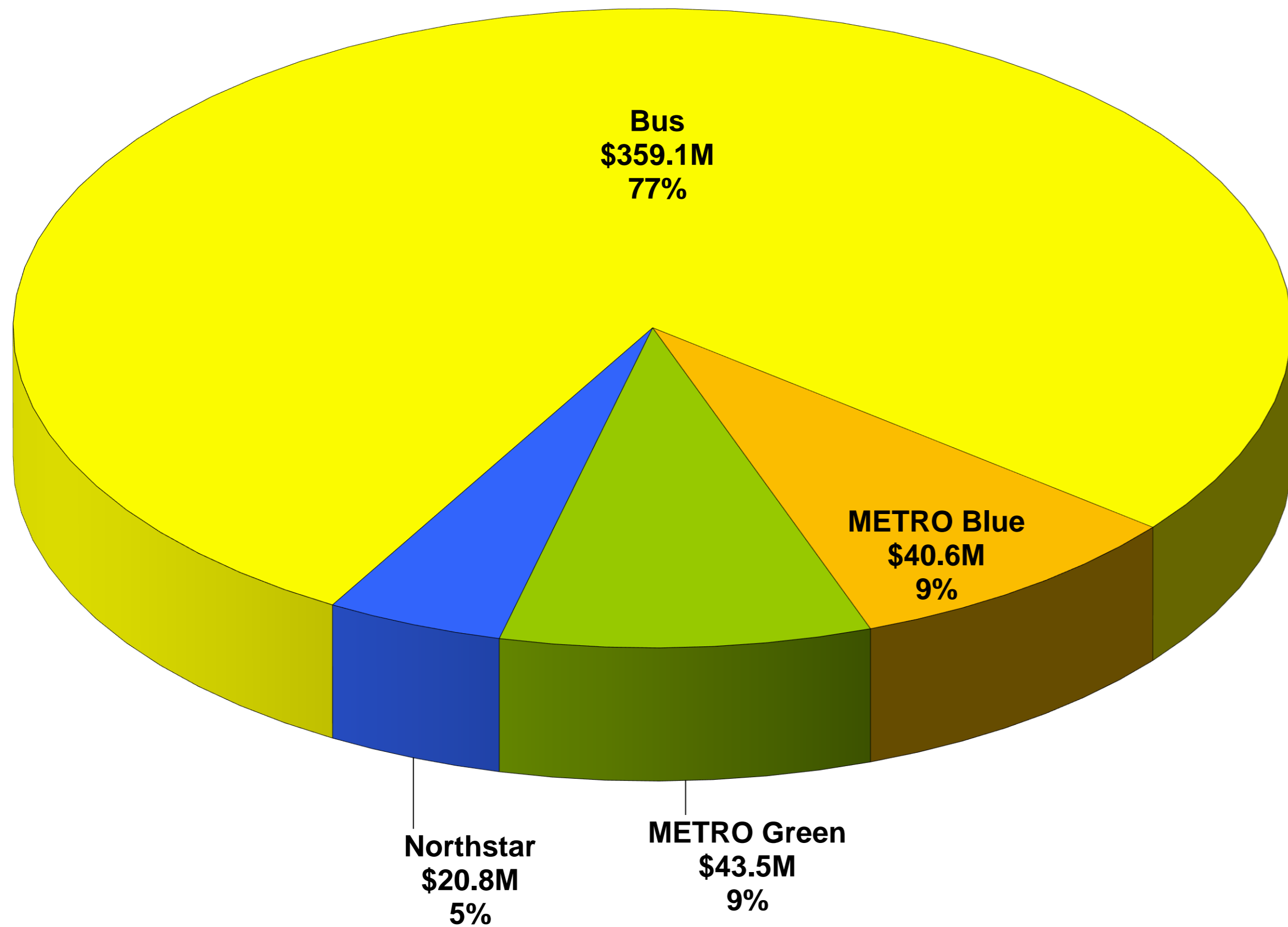
Metro Transit – Ridership



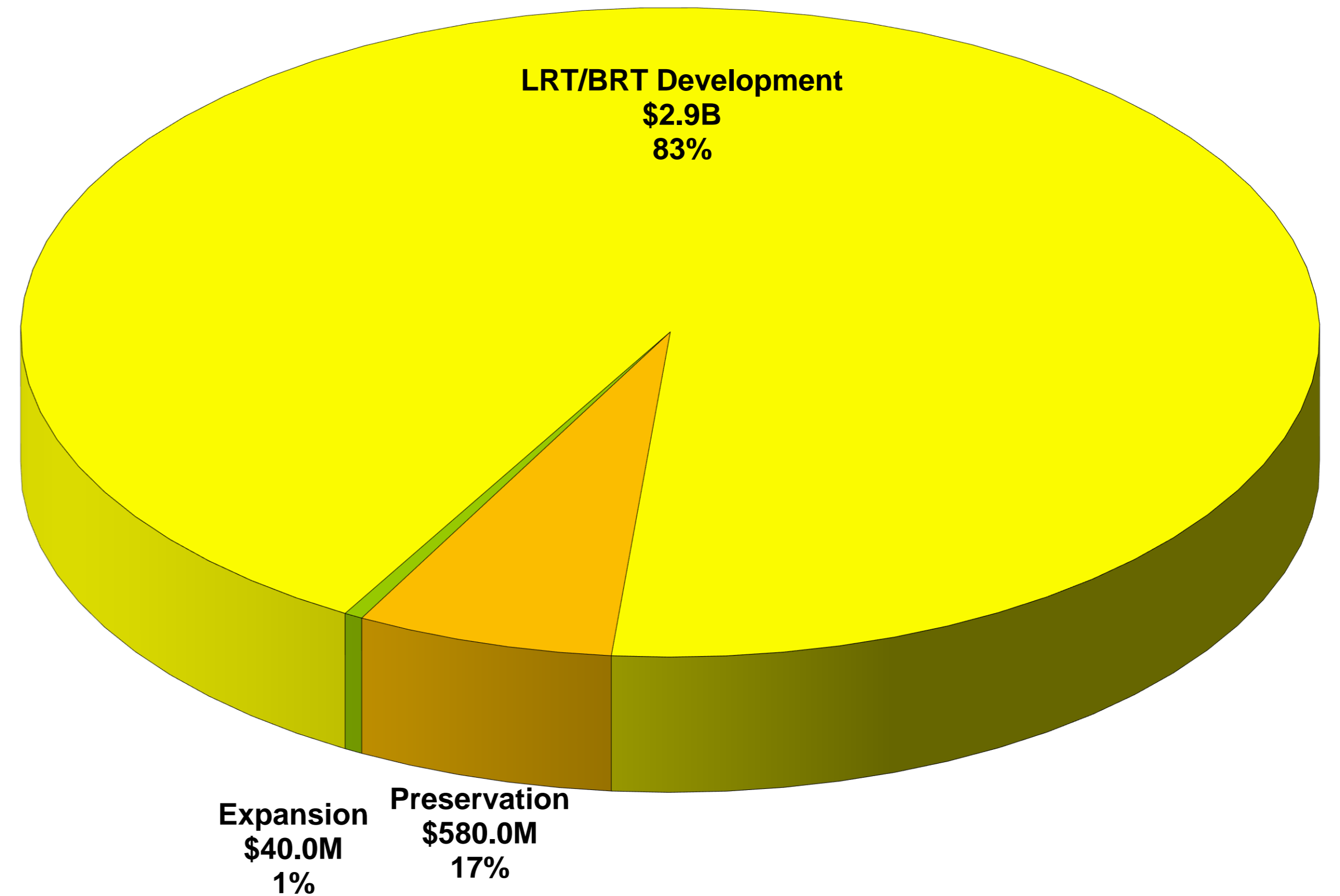
Over 77 million rides in 2019
251,564 average weekday ridership in 2019
~60% trips are for work or school

2020 Adopted Budget

2020 Operating Budget - \$464M



2020-2025 CIP – \$3.52B



Funding Structure: Operations

	Fares/Advertising	State Appropriation	MVST	County/Local
Bus (including ABRT)	23%		77%	
Blue Line LRT	36%	32%		32%
Green Line LRT	38%	31%		31%
Northstar	14%	36%	7% (MnDOT)	43%
Green Line Ext LRT	X			100% less fares/advertising
Orange and Gold Line BRT	X	TBD	TBD	X



Funding Structure: Capital Development

	Federal	Federal CIG	RTC	State	County/Local
Bus	X		X		
Blue and Green Line LRT	X	X	X	X	X
Northstar	X	X	X	X	X
Green Line Ext		X		X	X
Orange and Gold Line BRT		X		X	X



Relationship to Other Council Divisions

- MTS
 - MPO
 - Coordination of transit service
- Community Development
 - Partnership addressing unsheltered homelessness
 - Review of Comprehensive Plans for continuity with services and TPP
 - Transit Oriented Development
- ES – Coordination of construction projects
- Regional Administration – Administrative operations

Division Overview

Environmental Services (MCES)

9/14/2020

Blue Ribbon Commission



Environmental Services

- Operates the regional wastewater treatment system
- Carries out water supply planning activities required under Minn. Stat. 473.1565 and 473.157

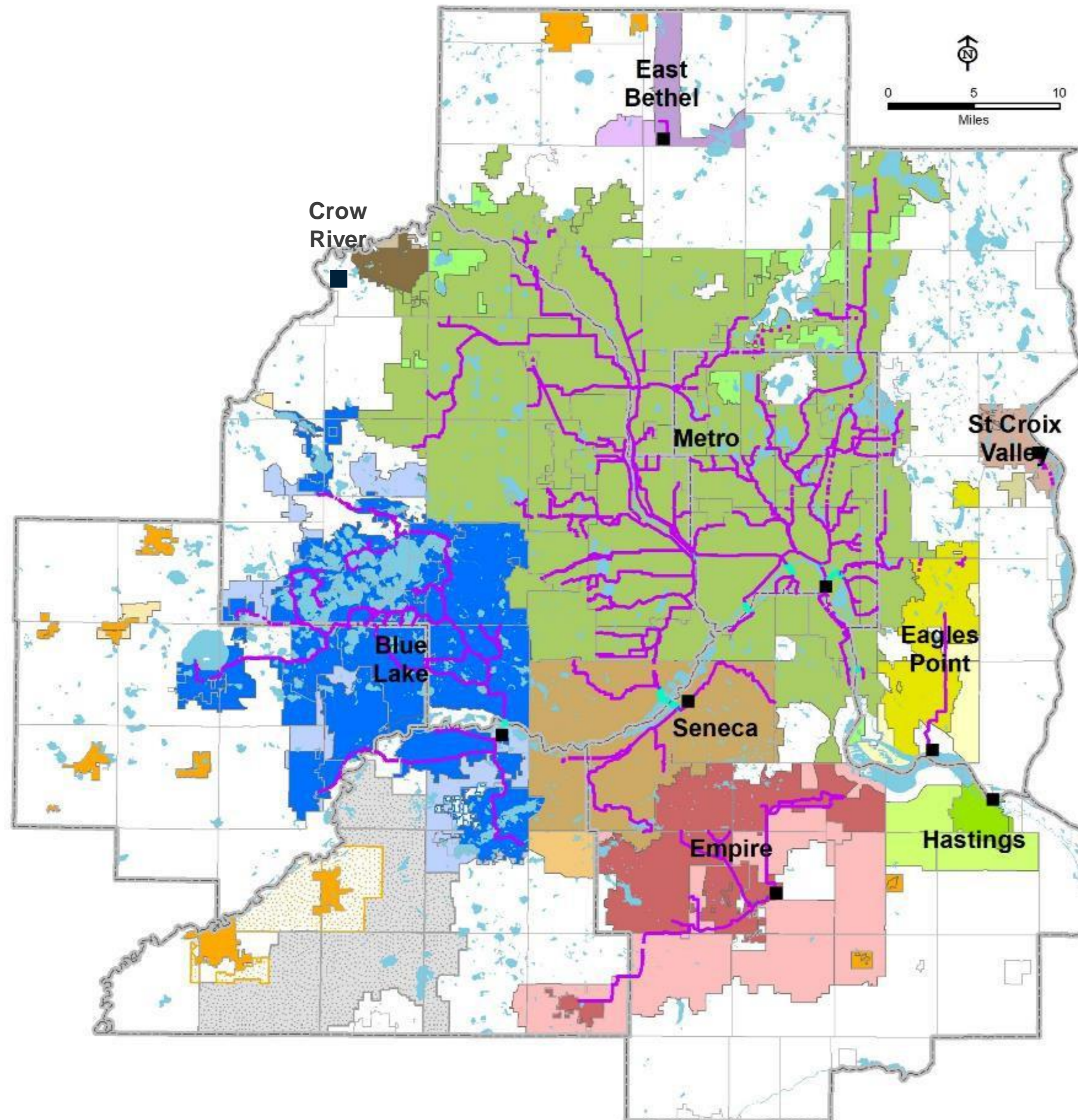


Service Area and Facilities

Service Areas

- Blue Lake
- Eagles Point
- East Bethel
- Empire
- Hastings
- Metro
- Seneca
- St. Croix Valley
- Crow River

Interceptors



We serve ~50% of
Minnesota's population

WHO WE SERVE

7-county Twin Cities Metro Area
110 communities
3,000 square miles
2,600,000+ people

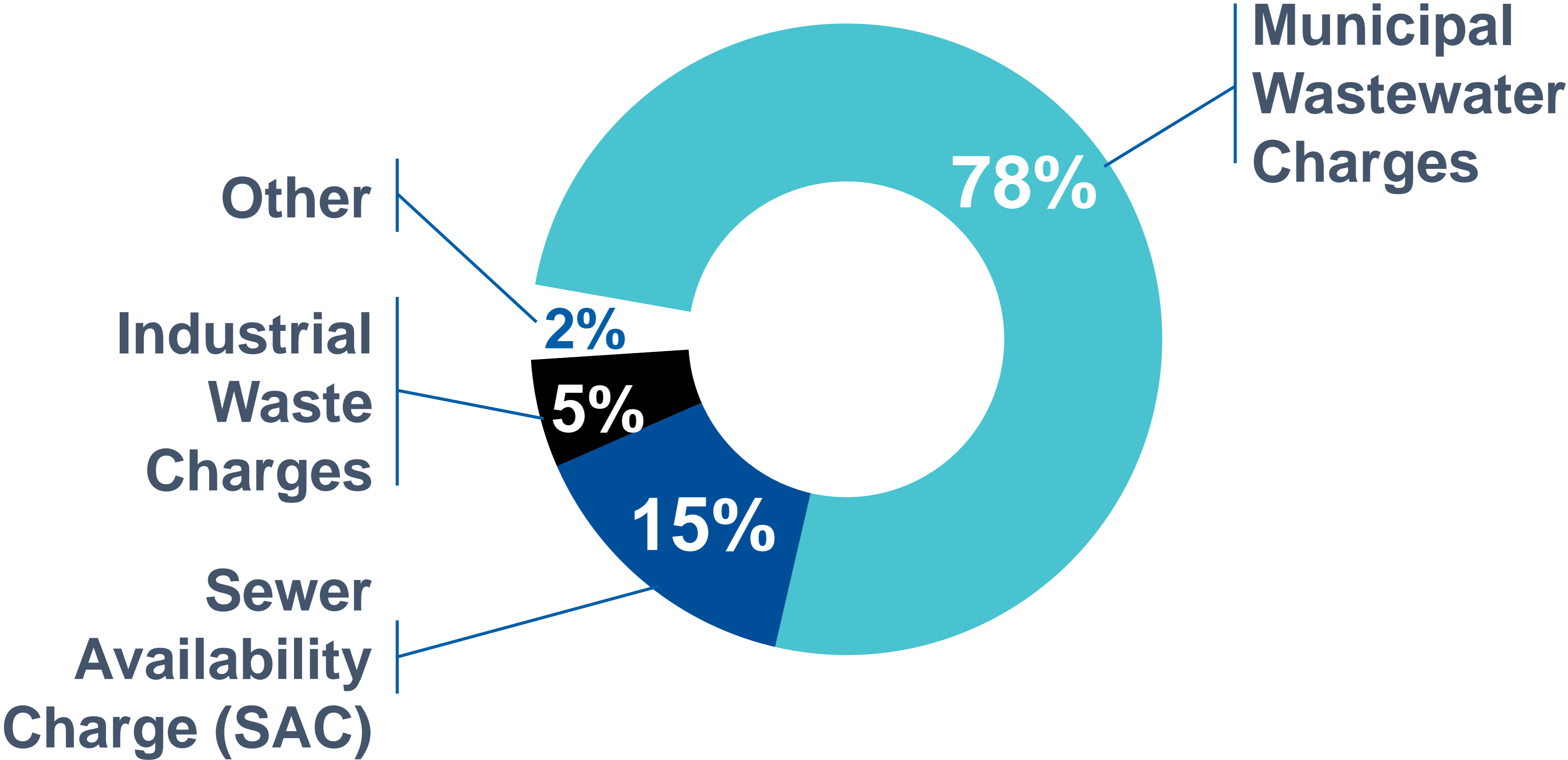
OUR FACILITIES

9 wastewater treatment plants
610 miles of interceptors
61 pump stations
250 million gallons per day (avg)

OUR ORGANIZATION

600+ employees
\$7 billion in valued assets
\$150 million per year capital program
\$323 million annual budget

Finance



Planning Authority



Develop Guide for the orderly, economical development of the metropolitan area. Previously called Regional Blueprint and Development Framework. Currently called Thrive MSP 2040.



Policy and System Plans for transportation, wastewater, and parks/open space systems. Wastewater policies and long-term system plan are contained in the 2040 Water Resources Policy Plan.



Review of local comprehensive plans for consistency with and conformance to the metropolitan development guide and policy/system plans.



Approval of local comprehensive sewer plans to ensure efficient use of the regional wastewater system.



Metropolitan area master water supply plan, in conjunction with Minnesota Department of Natural Resources.



Metropolitan area water resources plan addressing point and nonpoint discharges to surface waters, in conjunction with Board of Water and Soil Resources and watershed/organizations.

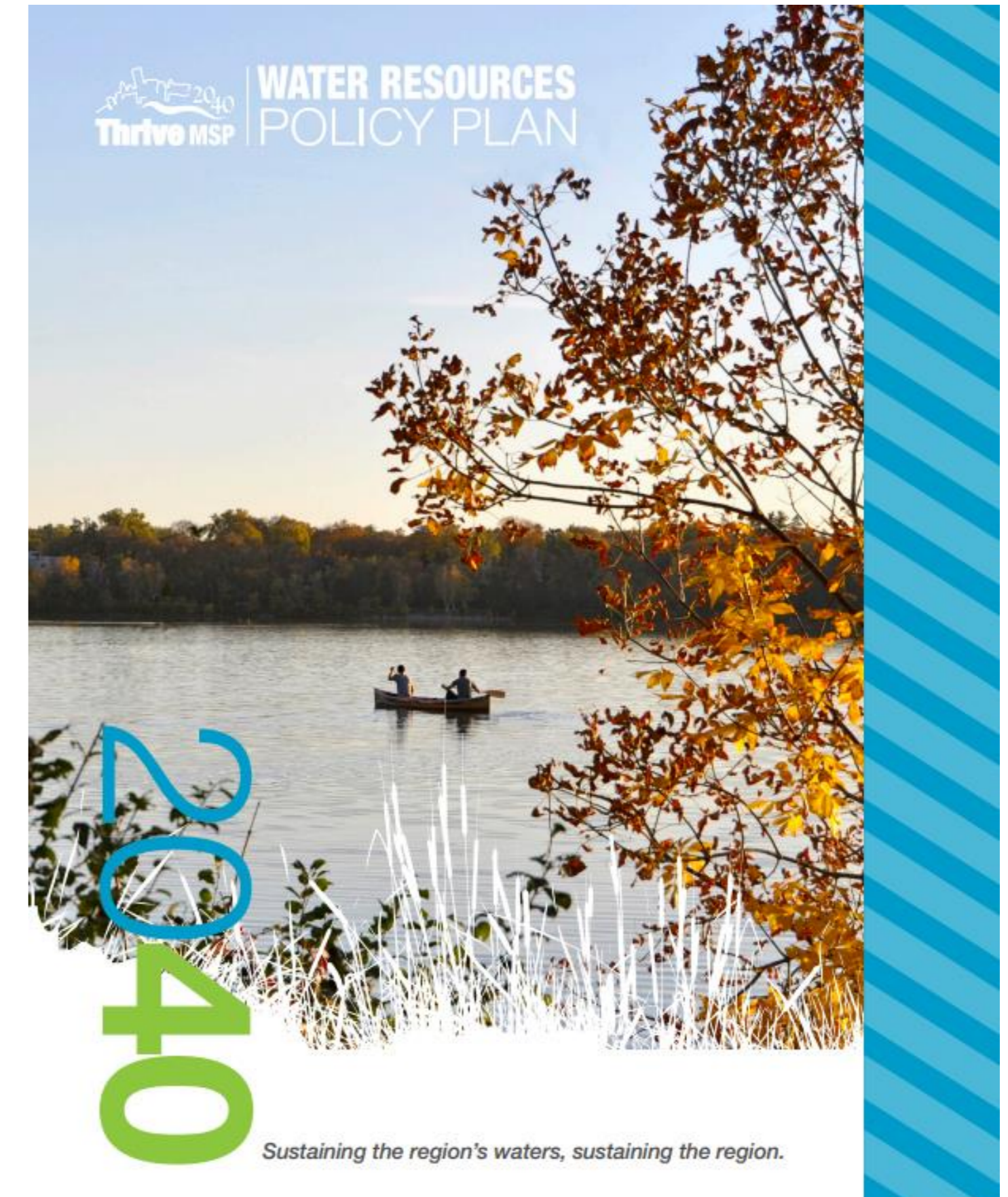
Policy Plan: Water Resources

Guides the orderly, economical development of the region

- Long-term wastewater system plan
- Reserve capacity to serve growth

Protects public health and water quality

- Reliable, high-quality wastewater conveyance and treatment
- Water resources information and planning assistance



Water Resources Collaboration

Adequate water supplies are essential for our region's growth, livability and prosperity.

- Metropolitan Council Role in Regional Water Supply Planning
 - Produce a regional water supply plan
 - Support local government units making informed and effective decisions
 - Assist communities in developing and implementing local plans
 - Identify approaches for emerging issues
 - Maintain strong collaborative relationships with stakeholders

MAWSAC Minn. Stat. 473.4565

- “Carry out planning activities addressing the water supply needs of the metropolitan area.”
- Metro Area Water Supply Advisory Committee (MAWSAC)
 - Counties
 - Municipalities/utilities
 - State agencies
- MAWSAC
 - Assists and guides Council water supply planning
 - Approves Master Water Supply Plan
 - Collaborates with a Technical Advisory Committee