

Division Overview

Environmental Services (MCES)

9/14/2020

Blue Ribbon Commission



Environmental Services

- Operates the regional wastewater treatment system
- Carries out water supply planning activities required under Minn. Stat. 473.1565 and 473.157

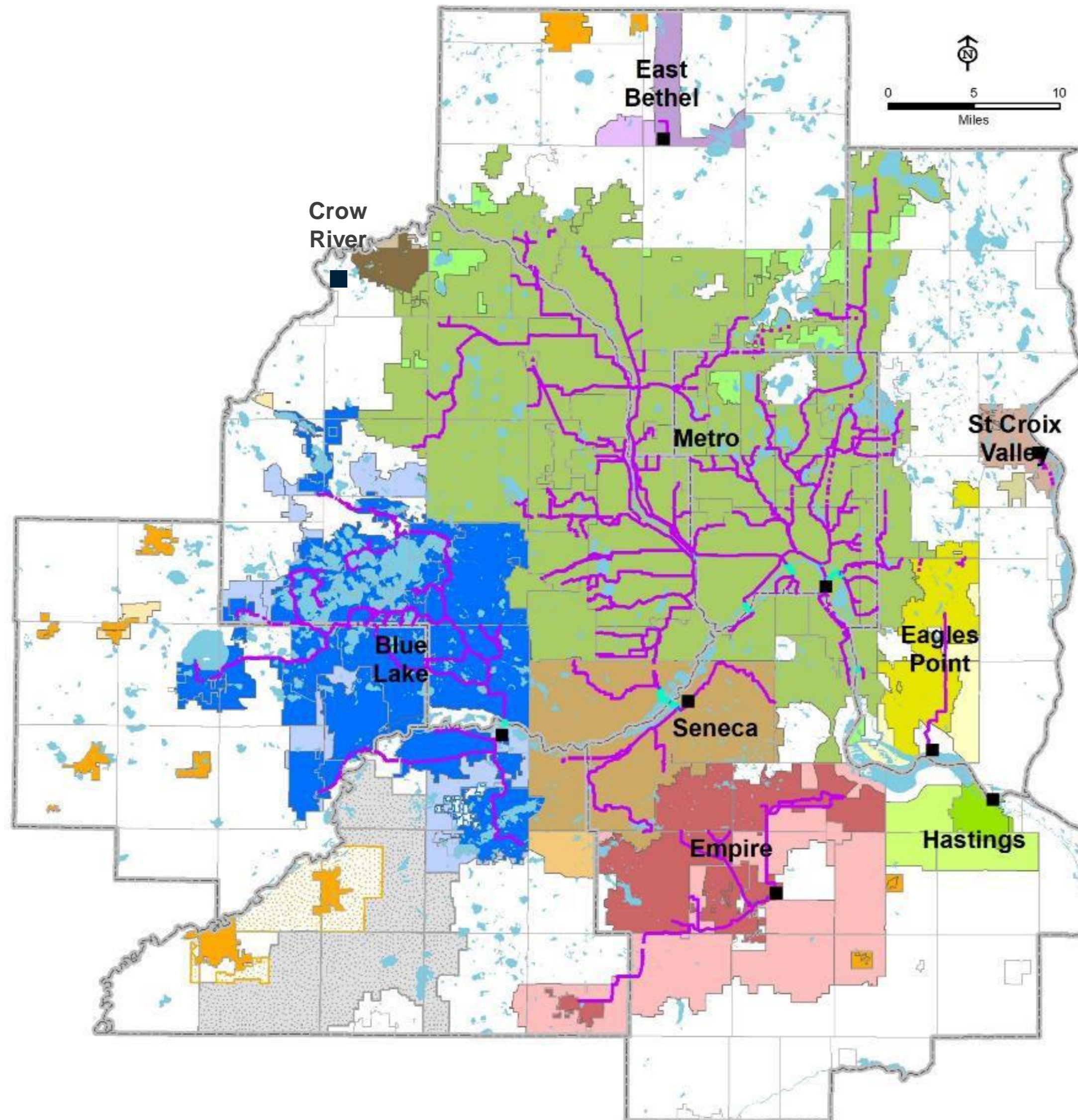


Service Area and Facilities

Service Areas

- Blue Lake
- Eagles Point
- East Bethel
- Empire
- Hastings
- Metro
- Seneca
- St. Croix Valley
- Crow River

Interceptors



We serve ~50% of
Minnesota's population

WHO WE SERVE

7-county Twin Cities Metro Area
110 communities
3,000 square miles
2,600,000+ people

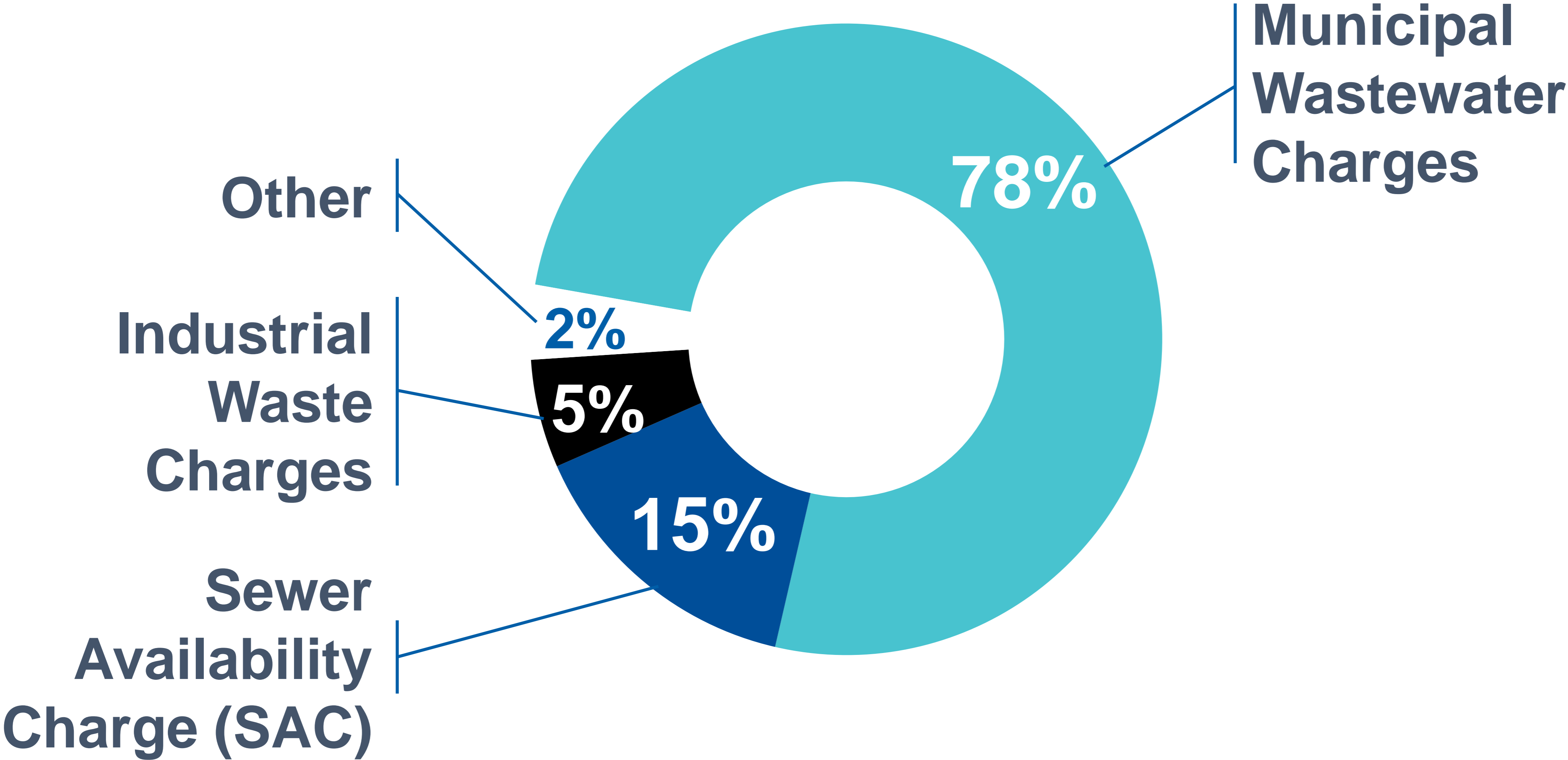
OUR FACILITIES

9 wastewater treatment plants
610 miles of interceptors
61 pump stations
250 million gallons per day (avg)

OUR ORGANIZATION

600+ employees
\$7 billion in valued assets
\$150 million per year capital program
\$323 million annual budget

Finance



Planning Authority



Develop Guide for the orderly, economical development of the metropolitan area. Previously called Regional Blueprint and Development Framework. Currently called Thrive MSP 2040.



Policy and System Plans for transportation, wastewater, and parks/open space systems. Wastewater policies and long-term system plan are contained in the 2040 Water Resources Policy Plan.



Review of local comprehensive plans for consistency with and conformance to the metropolitan development guide and policy/system plans.



Approval of local comprehensive sewer plans to ensure efficient use of the regional wastewater system.



Metropolitan area master water supply plan, in conjunction with Minnesota Department of Natural Resources.



Metropolitan area water resources plan addressing point and nonpoint discharges to surface waters, in conjunction with Board of Water and Soil Resources and watershed/organizations.

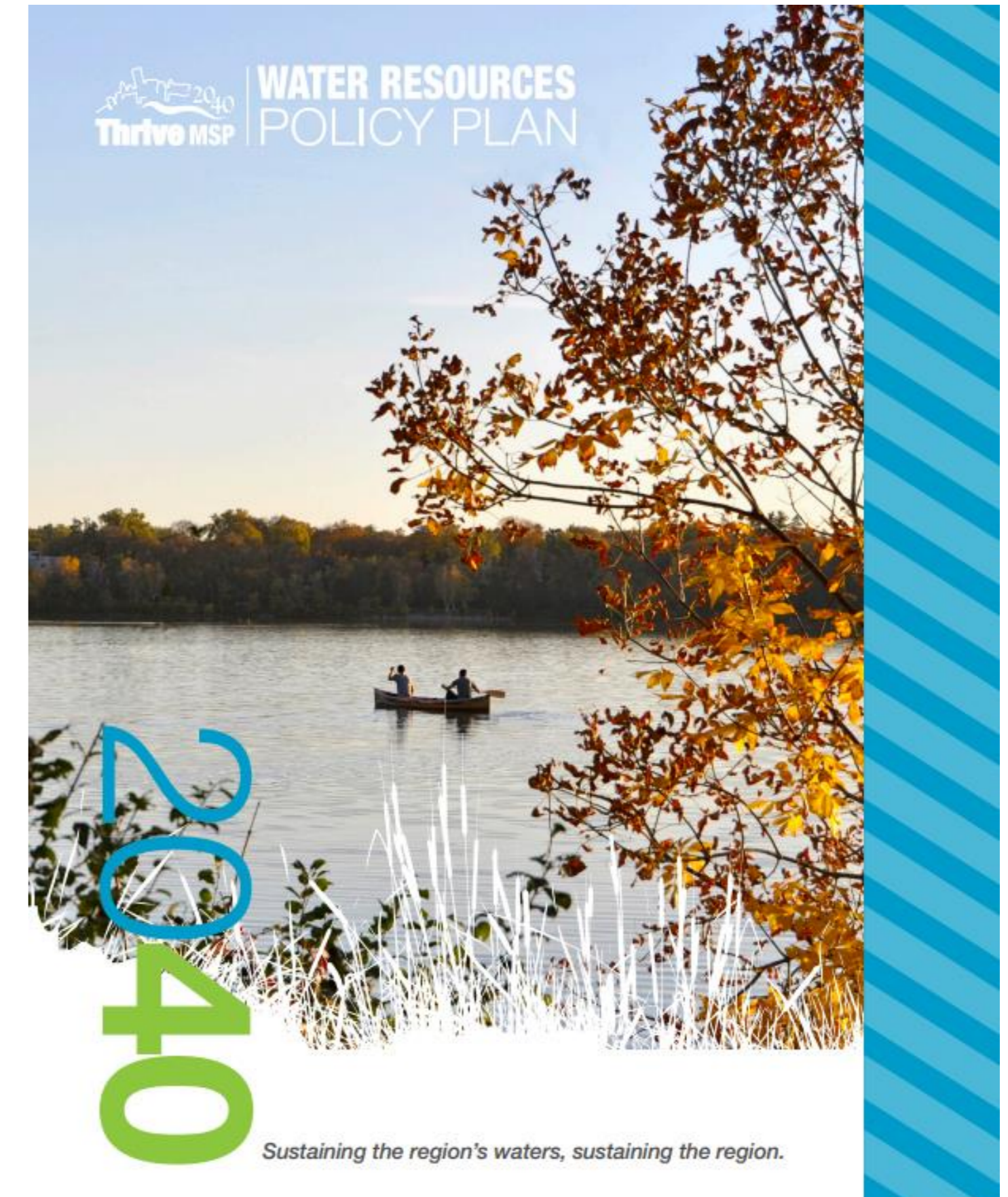
Policy Plan: Water Resources

Guides the orderly, economical development of the region

- Long-term wastewater system plan
- Reserve capacity to serve growth

Protects public health and water quality

- Reliable, high-quality wastewater conveyance and treatment
- Water resources information and planning assistance



Water Resources Collaboration

Adequate water supplies are essential for our region's growth, livability and prosperity.

- Metropolitan Council Role in Regional Water Supply Planning
 - Produce a regional water supply plan
 - Support local government units making informed and effective decisions
 - Assist communities in developing and implementing local plans
 - Identify approaches for emerging issues
 - Maintain strong collaborative relationships with stakeholders

MAWSAC Minn. Stat. 473.4565

- “Carry out planning activities addressing the water supply needs of the metropolitan area.”
- Metro Area Water Supply Advisory Committee (MAWSAC)
 - Counties
 - Municipalities/utilities
 - State agencies
- MAWSAC
 - Assists and guides Council water supply planning
 - Approves Master Water Supply Plan
 - Collaborates with a Technical Advisory Committee