

Division Overview

Metropolitan Transportation Service (MTS)

9/14/2020

Blue Ribbon Commission



MTS Division Responsibilities

Planning

- Serves as the region's federally required Metropolitan Planning Organization (MPO)
- Performs long-range transportation system planning for all modes
- Shorter term federal transportation funds programming

Transit operations

- Provide, contract for, and coordinate metropolitan transit operations
- Provide financial assistance to local transit providers

Grants

- Administer transportation grants to local agencies and transit operators

State and federal law – requirements

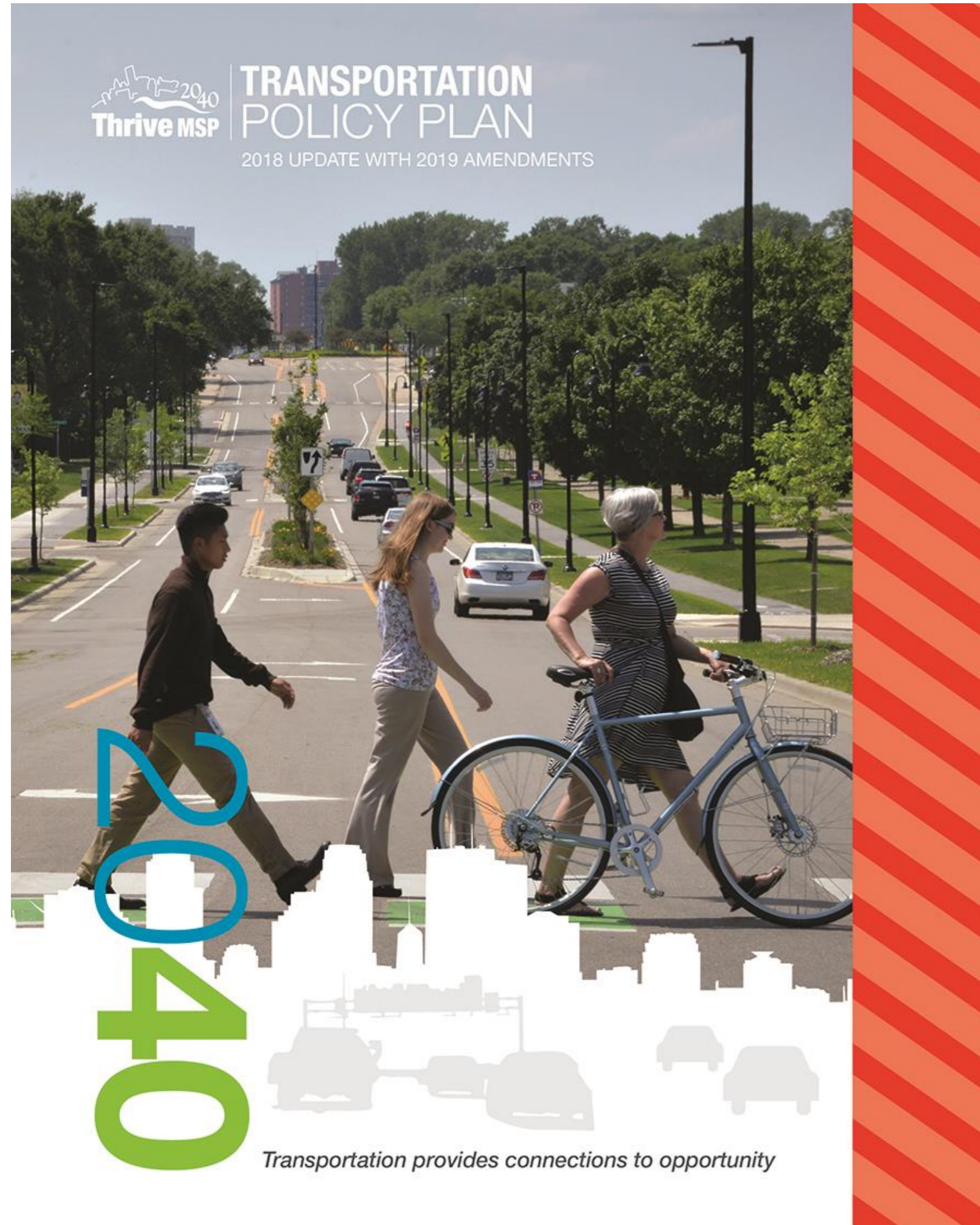
State Law – Minnesota Land Planning Act (MS 473.146)

“The Council is the designated planning agency for any long-range comprehensive transportation planning...[and] shall assure administration and coordination of transportation planning with appropriate state, regional and other agencies, counties, and municipalities.”

Federal Law and Rules

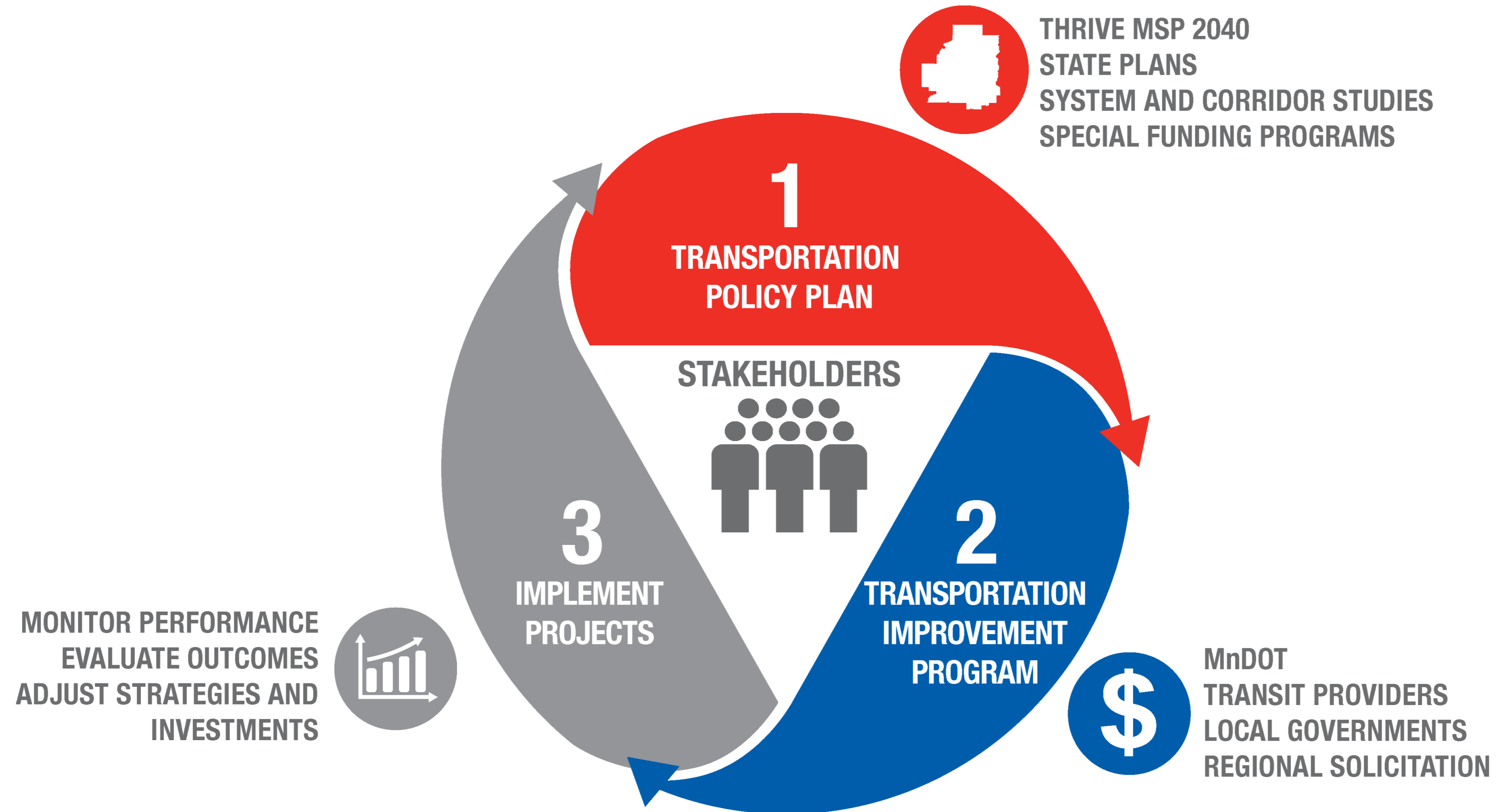
- Metropolitan Transportation Planning 23 USC §134
- National Environmental Policy Act
- 1990 Clean Air Act and Conformity Rule
- Title VI Environmental Justice

State transportation planning

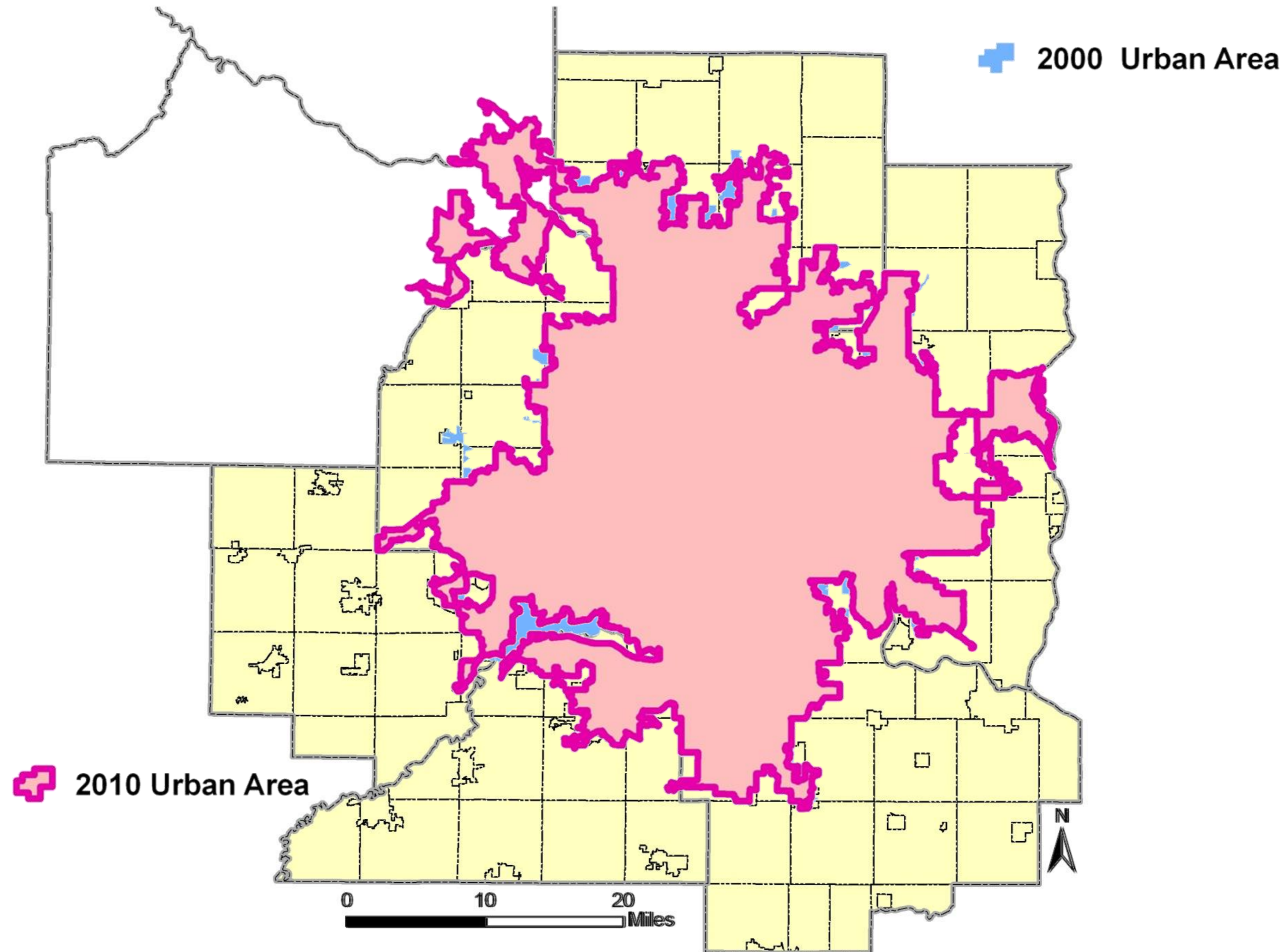


- Adopt a long-range comprehensive policy plan for transportation
- The Transportation Policy Plan
 - Represents two of four required regional system plans: surface transportation and aviation
 - Provides guidance on the regional transportation system for developing local comprehensive plans
- Council reviews local plan consistency and conformance with regional system plans

Metropolitan Planning Organization

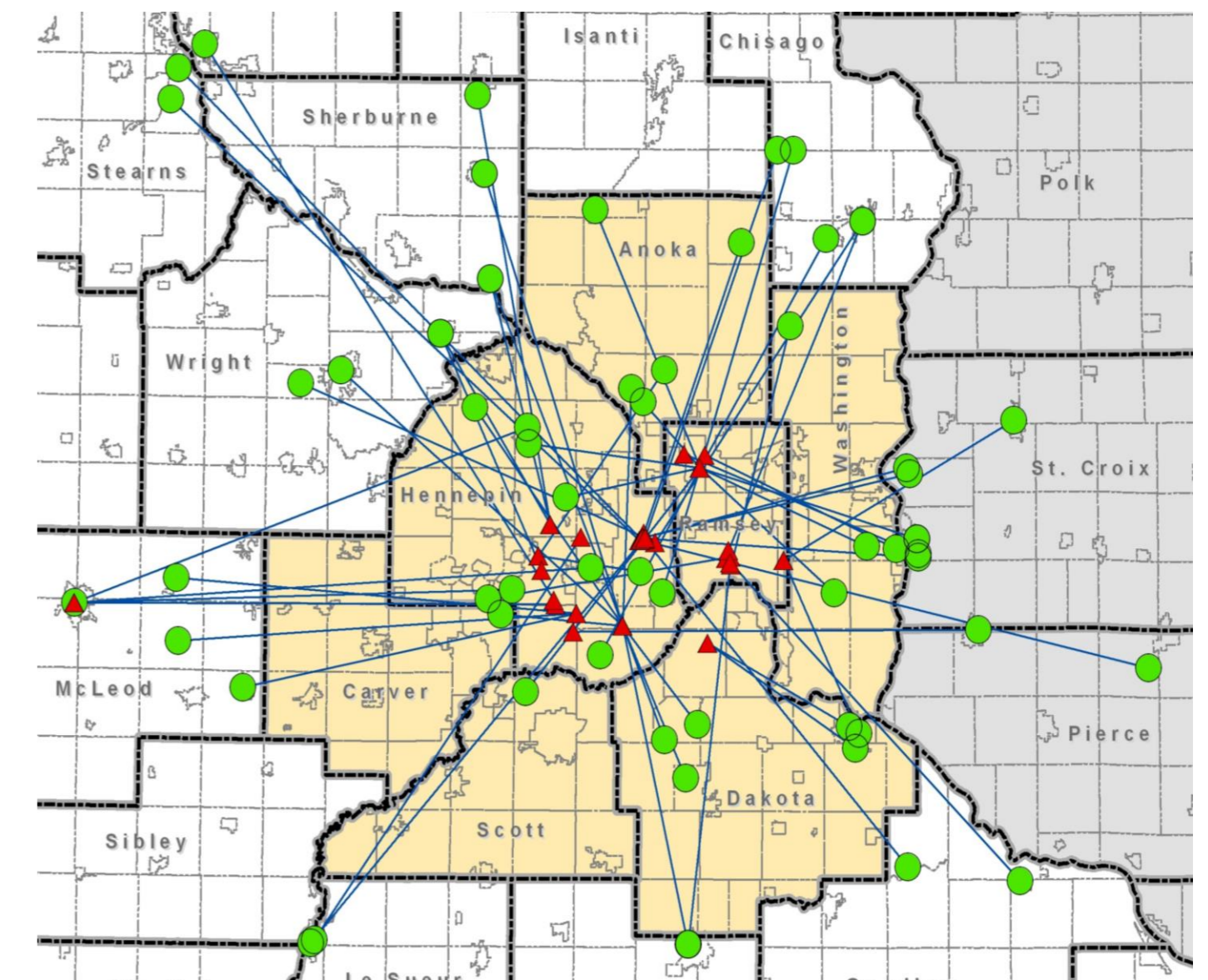
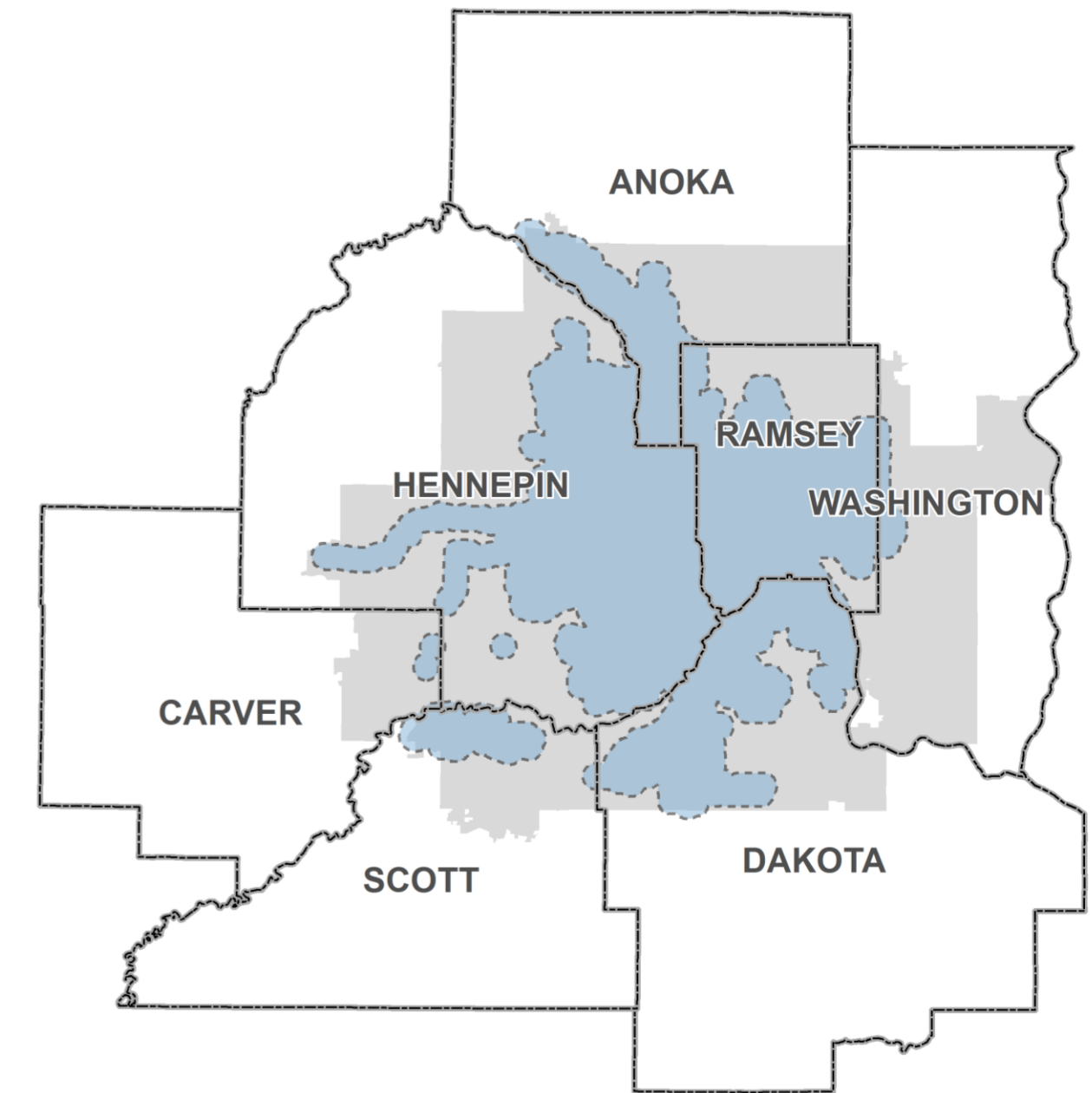


Metropolitan Planning Organization



MTS Family of transit services

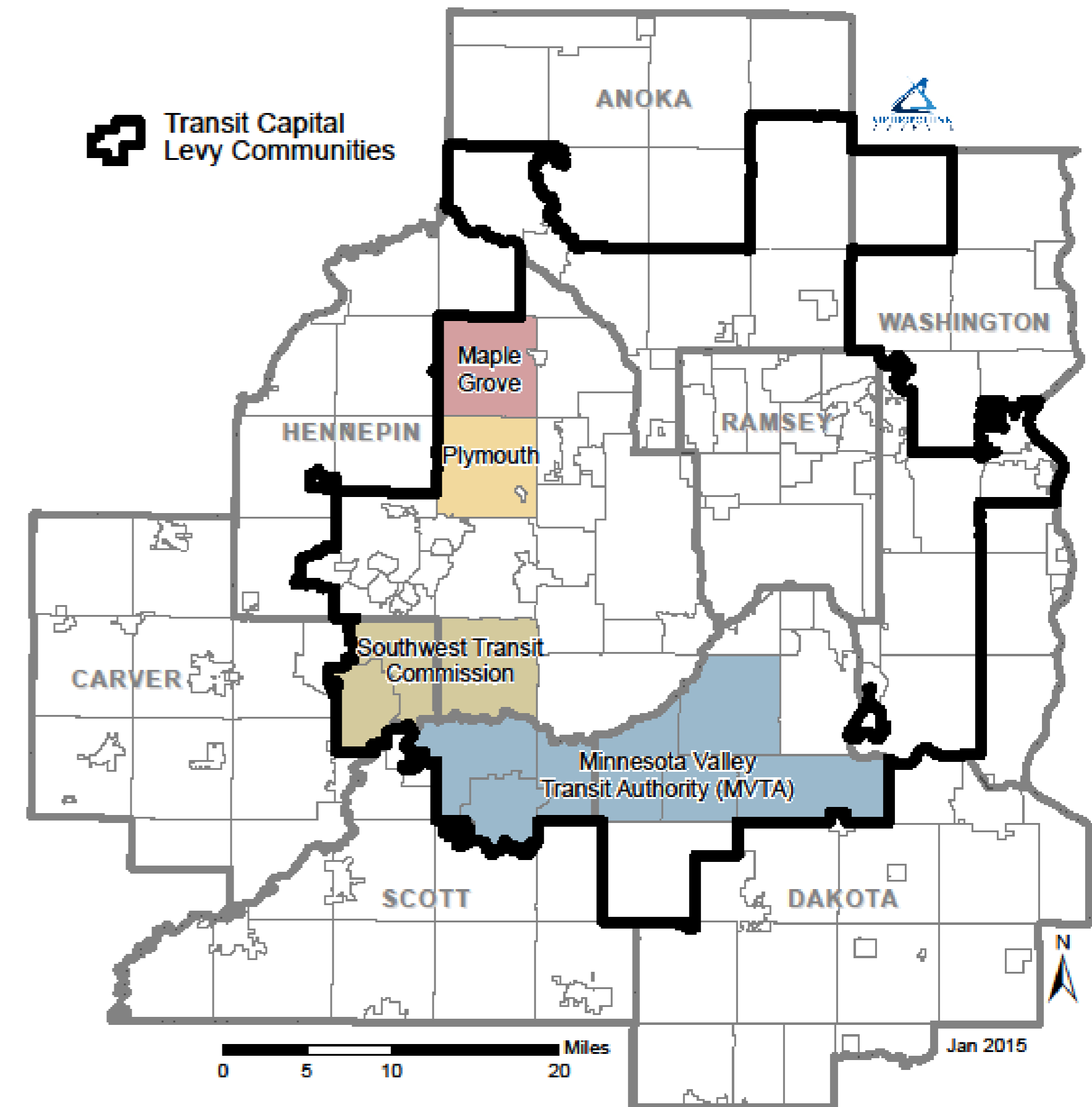
- **Fixed route** – backbone of public transit
- **Metro Mobility** – ADA service (blue)
 - Required by Federal Law
 - Complementary to fixed route
- **Metro Mobility - Non-ADA service (grey)**
 - ADA certified riders traveling outside ADA service area
 - Required by state law
- **Transit Link**
 - Shared-ride public transport where regular route transit is infrequent or unavailable
- **Metro Vanpool**
 - Vanpools have five to 15 people sharing the ride to and from work an average of three or more days a week.



Regional Services

- Fleet for Regional Services
- Technology
- Grants management
- Regional Policy
- Regional Provider Performance Reporting
- Support of Suburban Transit Providers (STPs)
 - Est. 1981 chapter 363, sec 44

Suburban Transit Providers



2019 regional transit ridership – 91.6 million

