

July 17, 2014

Local Planning Handbook Update

Land Use Advisory Committee



Overview

Land Use

Transportation

Water Resources Management

Parks and Natural Resources

Housing

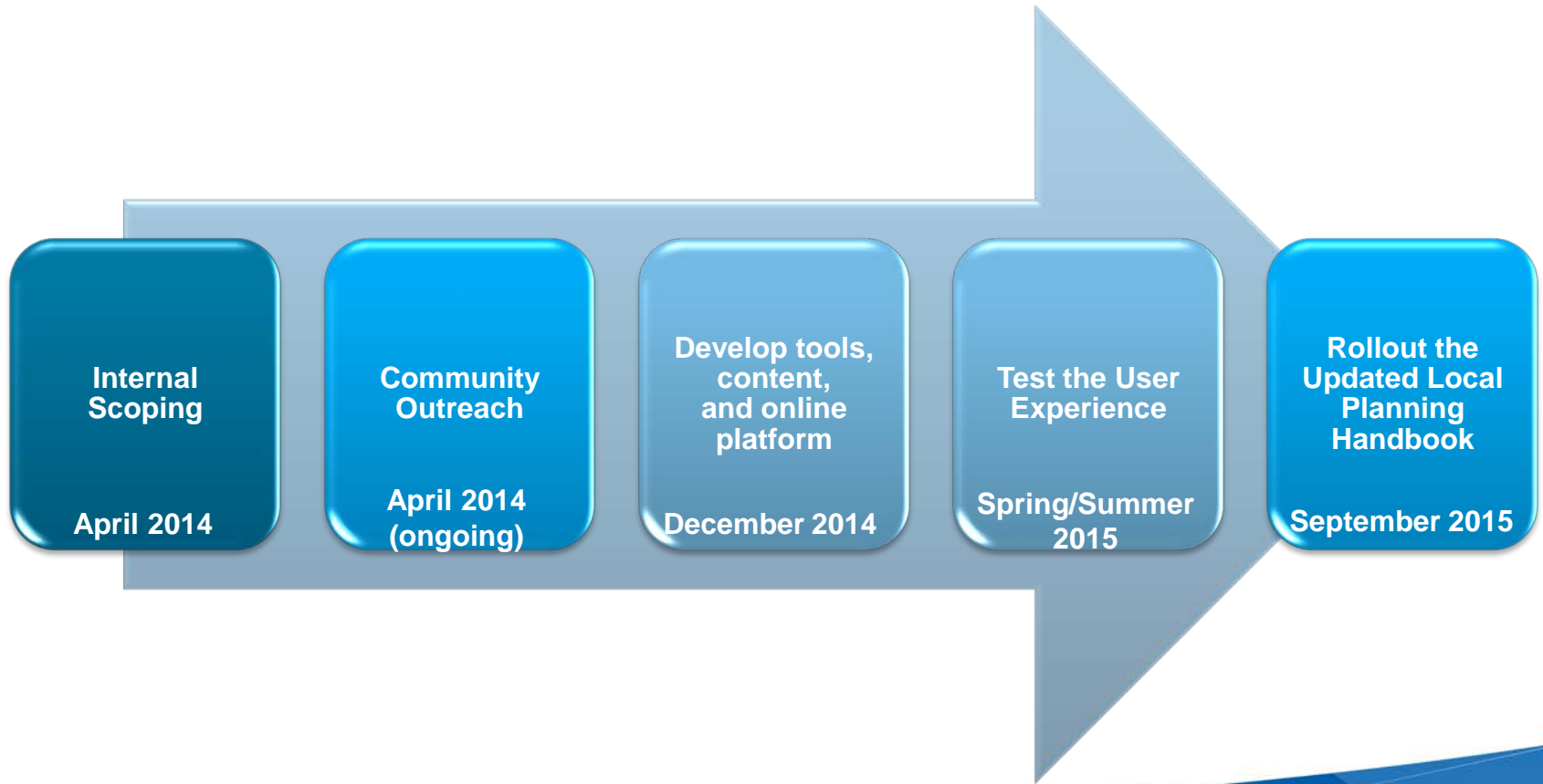
Climate Change

Economic Competitiveness

Special Resources

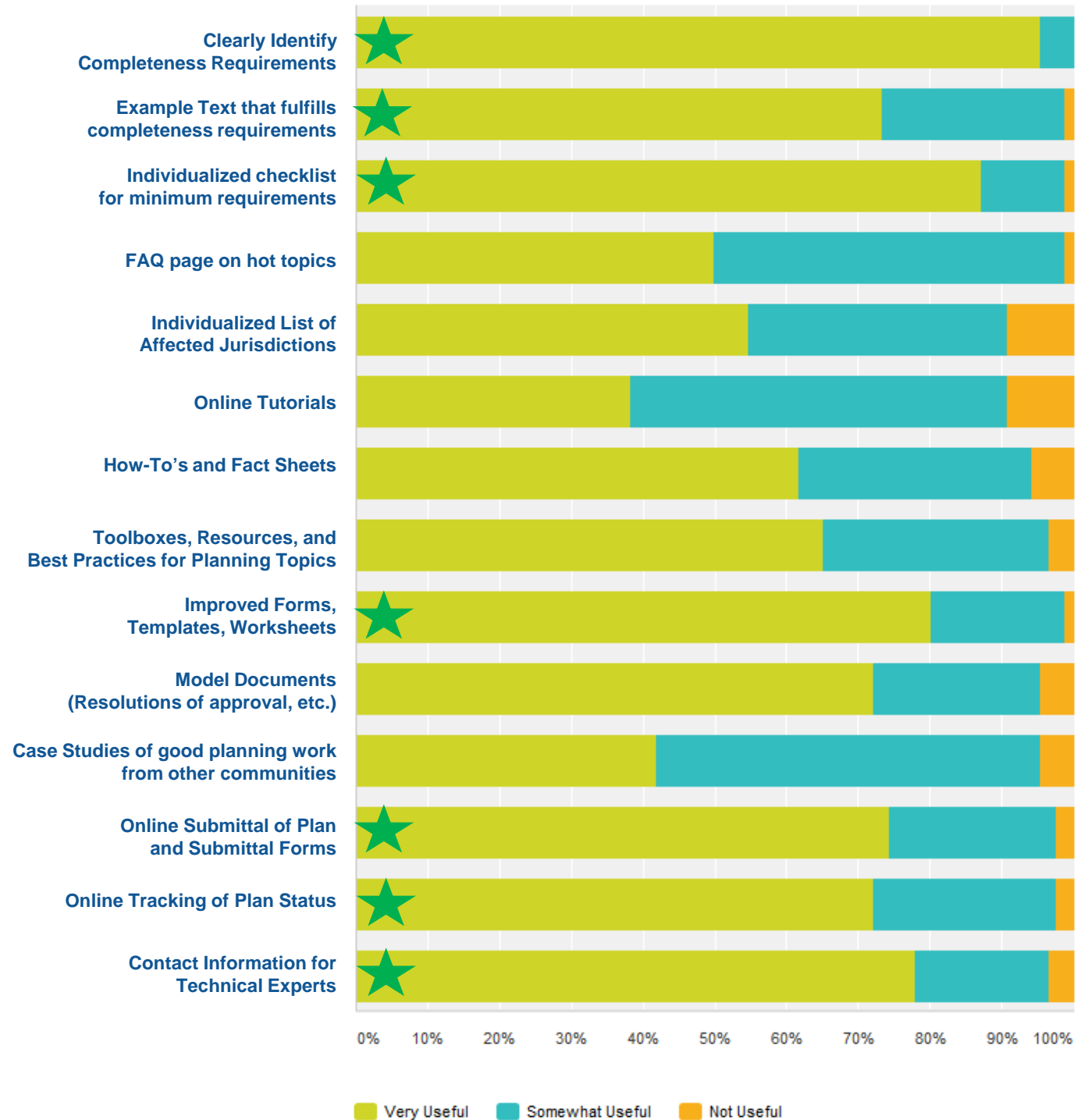
Implementation

Process and Timeline



Planners Survey Results

Question on Tools and Resource Preferences



Planners Survey Comments

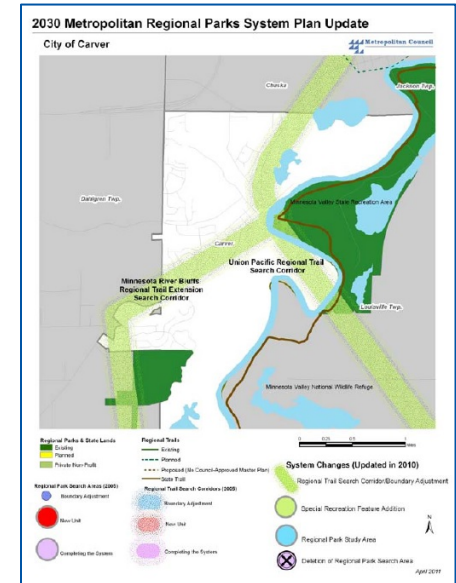
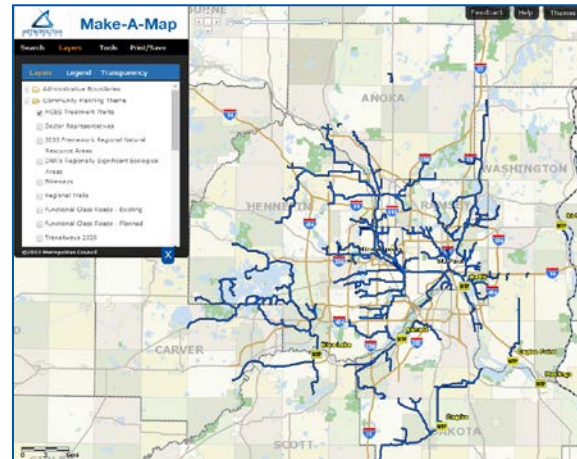
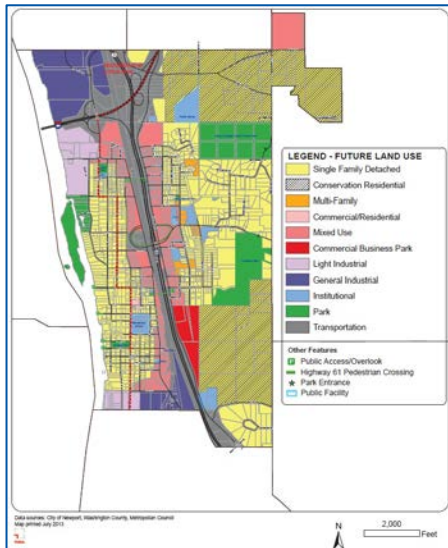
- “Make it easier to navigate.”
- “A more graphic format would be helpful.”
- “Be specific about requirements for urban and rural communities...”
- “Recommendations on setting up actions plans for implementing goals identified in Comprehensive Plan...”
- “Provide funding for planning consultants.”
- “More understanding that every City is unique and a cookie cutter approach is an issue..”
- “We don't really feel like we need a lot of help..”
- “Clear expectations with projected timelines for review/comment.”
- “Work with us right from the start!”
- “Provide both online and in-person tools - i.e. webinars, workshops.”

Tools

- Online Platform
- Individual Community Pages
- Checklist of Submittal Requirements
- Affected Jurisdictions List
- Online Submittal
- Status Tracking
- Mapping Tools

Mapping

- Static Maps
- Interactive Mapping Tool
- Future Land Use Mapping Tool/ Services



Resource Library

- Plan Examples
- How To's / Fact Sheets
- FAQs
- Toolboxes/Best Practices
- Forms/Worksheets
- Staff Contact Info
- Web Tutorials and Videos
- Community Highlights



We'd love your thoughts

- Thoughts on most valuable Handbook tools/resources?
What would help your community?
- Are there resources that you have found to be excellent?
- Communities to highlight?

Contact Information

Angela R. Torres, AICP

angela.torres@metc.state.mn.us

Phone: 651.602.1566

Freya Thamman

freya.thamman@metc.state.mn.us

Phone: 651.602.1750

Raya Esmaeili

raya.esmaeili@metc.state.mn.us

Phone: 651.602.1616