

Climate Vulnerability Assessment

# Interactive Localized Flooding Map (Bluespot)

Metropolitan Council Land Use Advisory  
Committee

09/21/2017



# The Climate Vulnerability Assessment Recap

- **July 21, 2016** – LUAC Presentation with Scoping
- **May 18, 2017** – LUAC Presentation on CVA & Human Vulnerability
- **September 21, 2017** – LUAC Presentation on Bluespot Map & Messaging

# Assessing the Vulnerability of the Built Environment



## Climate impacts related to:

- **Water** - Floodways and localized flooding
- **Temperature** - Urban heat island

## Two pronged approach:

- 1) Assess our regional systems and assets
  - Strategies to address vulnerabilities
- 2) Develop suggested strategies applicable for local governments



# Example from the CVA TT Draft

## Flood Potential on the Metro Blue Line with Hypothetical Localized Considerations

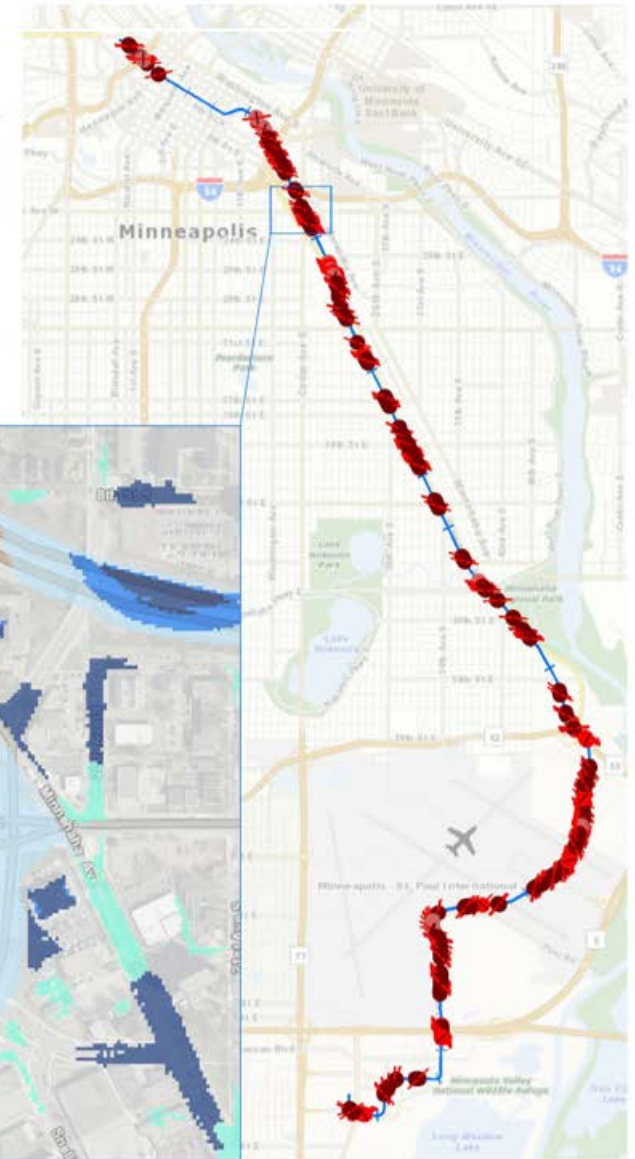
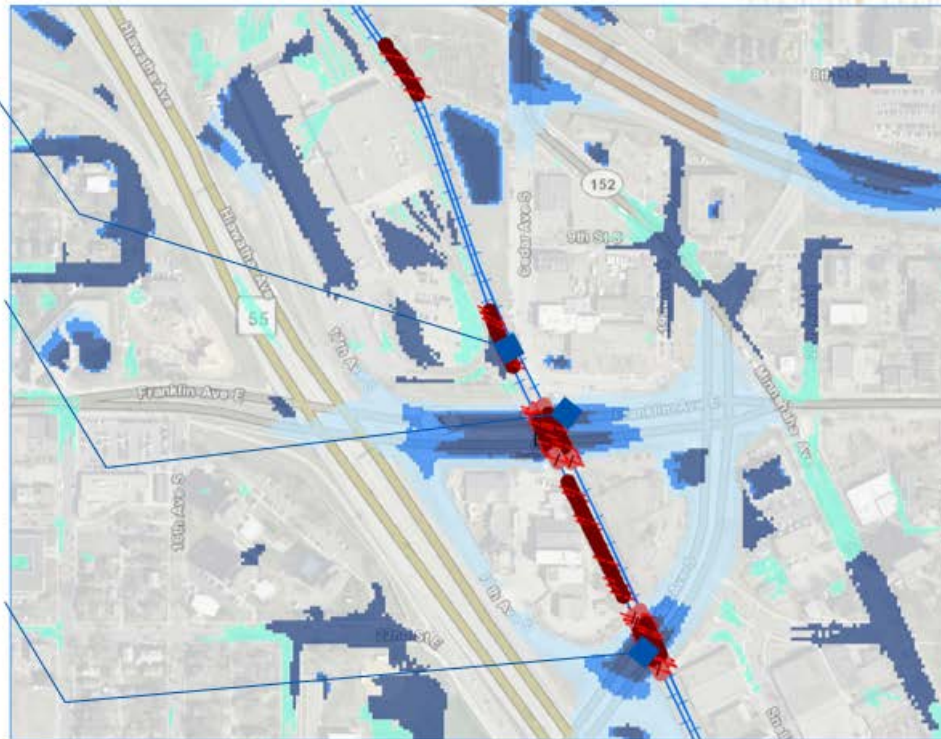
### Flood Impact Zones on Rails All Flood Impact Zones

-  Primary & Shallow
-  Secondary
-  Tertiary
-  Primary
-  Secondary
-  Tertiary
-  Shallow

Investigate: flood risk may reach only southbound track

Elevator access to station in Primary Flood Impact Zone

Rails may run above potential flooding at crossings





# Communicating Localized Flooding

## Challenges

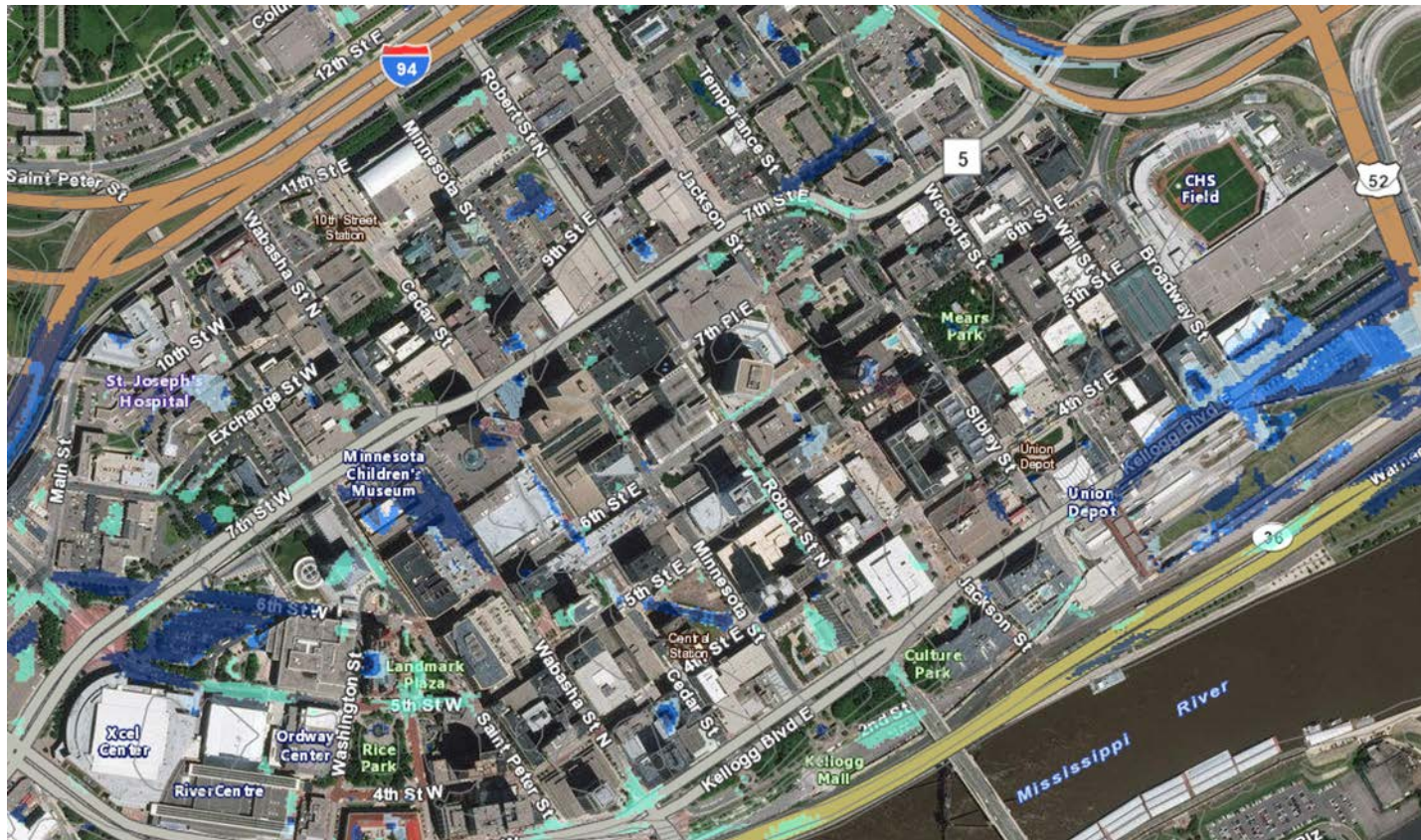
- Property Rights & DFIRM
- Community Sensitivities
- Target Audience
- Clear, Concise Purpose
- Technical Jargon

## Opportunities

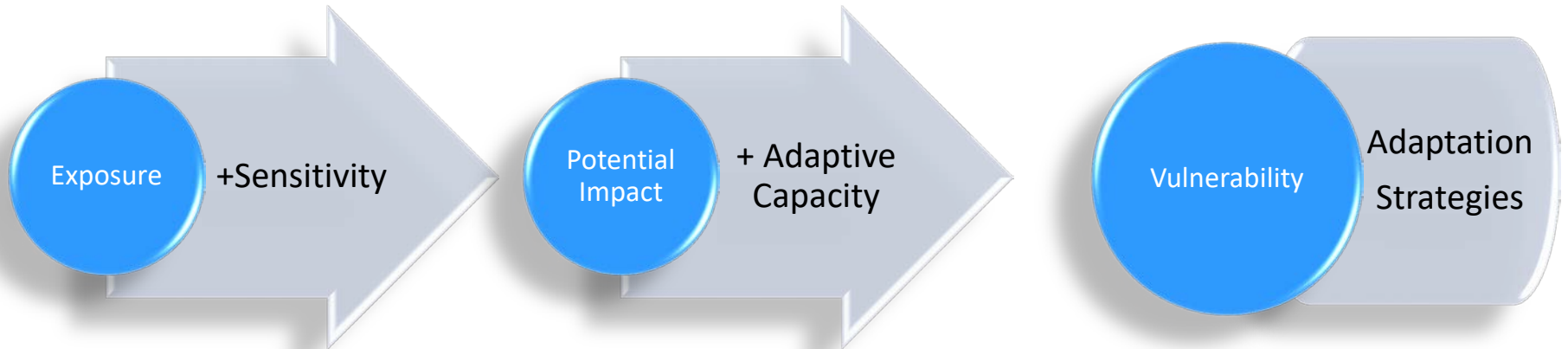
- Screening Tool
- Truthing, Pre-planning
- Community Staff/Officials
- 1 in a Set of Tools
- Plain Language



# The Localized Flooding Map (Bluespot)



# Next Steps



- **Finalize Report Chapters and Local Planning Handbook tools/strategies**
  - Autumn & Winter 2017
- **Human Vulnerability Assessment**
  - Spring 2018

Any Questions?

**THANKS!**

**Project Manager**

**Eric Wojchik**

Local Planning Assistance

651-602-1330

[eric.wojchik@metc.state.mn.us](mailto:eric.wojchik@metc.state.mn.us)

