

Thrive MSP 2040

Introduction to Land Use Policy

July 18, 2019

Land Use Advisory Committee



LUAC and Land Use Policy

LUAC
Responsibilities

Land use
policies in
Thrive

Implementation
of regional
policy

MAWSAC
Collaboration

What is *Thrive MSP 2040*?

“The Metropolitan Council shall prepare and adopt, after appropriate study and such public hearings as may be necessary, a **comprehensive development guide** for the metropolitan area...”

(Minn. Stat. 473.145)

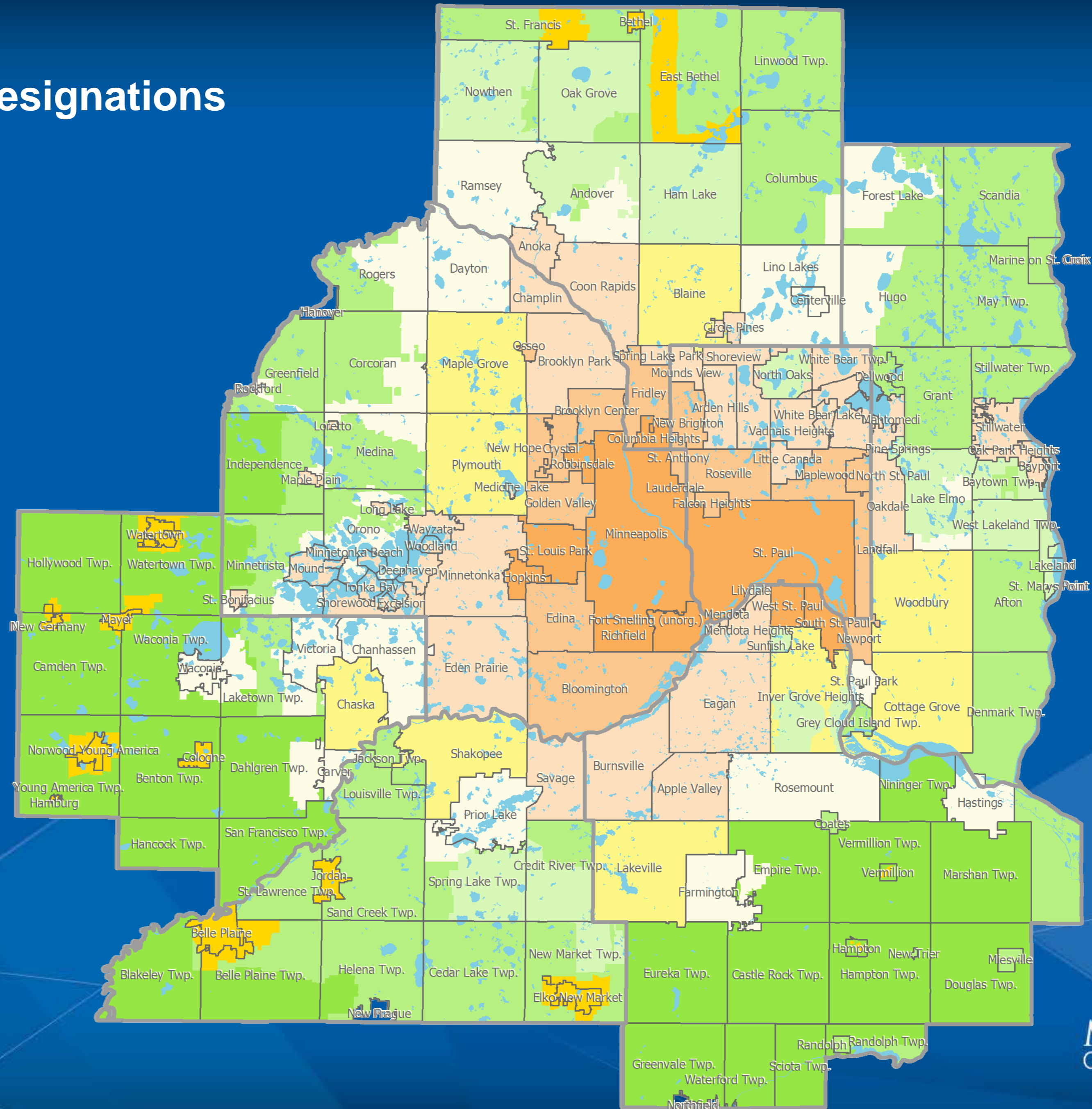


2040 Thrive Community Designations Metropolitan Urban Service Area

- Urban Center
- Urban
- Suburban
- Suburban Edge
- Emerging Suburban Edge

Rural Service Area

- Rural Center
- Diversified Rural
- Rural Residential
- Agricultural



Land Use Direction

Seven policies together to achieve Thrive Outcomes

Orderly & Efficient
Land Use

Natural
Resources

Water

Housing

Transportation

Economic Comp.

Resilience

Each Land Use Policy

Broad direction, region-wide application

Council Roles

Community Roles

Community Designations

More specific, distinguishes between community types

Council Roles

Community Roles



Orderly and Efficient Land Use

Align land use, development patterns, and infrastructure to make the best use of public and private investment.

- Support forecasted growth at appropriate densities consistent with your community designation.
- Plan and develop interconnected and well-connected local streets, adequate stormwater infrastructure, adequate water supply, and properly managed subsurface sewage treatment systems to support local growth forecasts.
- Develop plans to improve conditions for and encourage walking and bicycling where appropriate.
- Maintain, replace, or expand local facilities and infrastructure to meet growth and development needs.
- Adopt and implement the local comprehensive plan following Council review.



Natural Resources Protection

Conserve, restore, and protect the region's natural resources to ensure availability, support public health, and maintain a high quality of life.

- Include goals, priorities, and natural resource conservation strategies in the local comprehensive plan to protect and enhance natural resources identified in regional and local natural resource inventories.
- Conserve, protect, and interconnect open space to enhance livability, recreational opportunities, and habitats.
- Adopt and implement ordinances for the conservation and restoration of natural resources within the community.
- Work with regional partners and regional park implementing agencies to identify, plan for, and acquire natural areas and resources prime for preservation and protection.
- Plan for aggregate resource extraction where viable deposits remain accessible, as required by the Metropolitan Land Planning Act.



Water Sustainability

Conserve, restore, and protect the quality and quantity of the region's water resources to ensure ongoing availability, support public health, and maintain a high quality of life.

- Protect, maintain, and enhance the quality and quantity of the region's water resources and water supply.
- Prepare and implement local water supply plans and source water protection ordinances.
- Plan land use patterns that facilitate groundwater recharge and reuse, and reduce per capita water use to protect the region's water supply.
- Plan for sustainable water supply options and groundwater recharge areas.
- Partner with other water supply providers to explore options to reduce dependence on groundwater.
- Prepare and implement local surface water plans.
- Reduce the excess flow of clear water into the local wastewater collection system.



Water Sustainability (continued...)

Conserve, restore, and protect the quality and quantity of the region's water resources to ensure ongoing availability, support public health, and maintain a high quality of life.

- Incorporate current MPCA regulations (Minn. Rules Chapters 7080-7083) as part of a program for managing subsurface sewage treatment systems (SSTS).
- Adopt and enforce ordinances related to stormwater management and erosion control.
- Adopt and implement best management practices for abating, preventing, and reducing point and nonpoint source pollution.
- Develop and adopt critical area plans and ordinances consistent with Executive Order 79-19 and Critical Area Program rules in the Mississippi River Critical Area Corridor.
- Integrate drinking water source protection into local land use decisions.
- Develop programs that encourage stormwater management, treatment, and infiltration.



Housing Affordability and Choice

Promote housing options to give people in all life stages and of all economic means viable choices for safe, stable, and affordable homes.

- Prepare a local comprehensive plan that addresses the affordable housing planning requirements of the Metropolitan Land Planning Act.
- Review local ordinances, policies, and partnerships to ensure they encourage and facilitate the opportunity for the development or preservation of affordable and lifecycle housing.
- Identify and analyze local markets, location, condition, and availability of affordable units, both publicly subsidized and naturally occurring, to inform the housing element of the local comprehensive plan.
- Participate in Livable Communities Act programs.
- Direct new affordable housing development to land with sewer service or adequate community septic systems.
- Collaborate with partners to rehabilitate and preserve existing housing.



Access, Mobility, and Transportation Choice

Sustain and improve a multi-modal transportation system to support regional growth, maintain regional economic competitiveness, and provide choices and reliability for the system's users.

- Consider travel modes other than the car at all levels of development to better connect and integrate choices throughout all stages of planning.
- Plan for and construct an interconnected system of local streets, pedestrian, and bicycle facilities that is integrated with the regional system.
- Adopt access management standards that support state and county highway access and mobility needs.
- Plan for compatible land uses and air space adjacent to the system of regional airports.
- Participate in regional transportation planning activities to ensure that the metropolitan planning process and regional transportation system reflect local needs.
- Work with partners in communities, counties, and the region at large to coordinate transportation, pedestrian, bicycle, and trail connections.



Economic Competitiveness

Foster connected land use options to provide businesses and industries with access to materials, markets, and talent.

- Plan for the further development of and intensification of existing and emerging job concentrations.
- Consider completing a community-based market analysis to better understand real estate needs for commercial and industrial land.
- Consider addressing economic competitiveness in the local comprehensive plan.
- Preserve sites for highway-, river-, and rail-dependent manufacturing and freight transportation.
- Engage with businesses and other employers to ensure their input is provided to the local comprehensive plan.



Building in Resilience

Promote sensitive land use and development patterns to achieve Minnesota's adopted greenhouse gas emissions goals at the regional scale, and to develop local resiliency to the impacts of climate change.

- Address climate change mitigation and adaptation in locally meaningful ways in the local comprehensive plan.
- Identify local measures that would result in reductions in water use, energy consumption, and emission of greenhouse gases.
- Protect and enable the development of solar resources and consider the use of other alternative energy sources as part of the planning process.
- Consider the development or use of community solar gardens (CSGs) by public and private entities.
- Address impacts to local economies, local resources, and infrastructure systems as a result of more frequent or severe weather events.
- Identify local initiatives as cost-saving measures that may lower energy consumption, reduce the generation of greenhouse gas emissions, preserve water supply, reduce municipal waste, or increase participation in recycling programs.
- Participate in programs that evaluate and share city practices and provide technical support.

Questions

LisaBeth Barajas, Community Development Director

Lisa.Barajas@metc.state.mn.us

(651) 602-1895

Angela R. Torres, AICP, Local Planning Assistance Manager

Angela.Torres@metc.state.mn.us

(651) 602-1566

