

Regional Parks System Additions Project: Process Update

May 21, 2020

Land Use Advisory Committee



Presentation Overview

- The Regional Park System today – Key Legislation, Overview, Policy Framework, Elements of the System
 - Discussion: What does a mature or complete Regional Park System look like? (a.k.a., “What do we want to be when we grow up?”)
- 2019-2020 System Additions process to-date, next steps
 - Discussion: What advice do you have for the Metropolitan Parks and Open Space Commission and Council staff as they review and evaluate system addition proposals in June?

Key Minnesota Legislation for the Regional Parks System



- Regional Recreation Open Space (Minn. Stat. § 473.121, subd. 14)
 - “Regional recreation open space’ means land and water areas...and facilities determined by the Metropolitan Council to be of regional importance in providing for a balanced system of public outdoor recreation for the metropolitan area, including but not limited to park reserves, major linear parks and trails, large recreation parks...and other special use facilities.”
- Regional Recreation Open Space System Policy Plan (Minn. Stat. § 473.147, subd. 1)
 - “The policy plan shall identify generally the areas which should be acquired by a public agency to provide a system of regional recreation open space...which, together with state facilities, reasonably will meet the outdoor recreation needs of the people of the metropolitan area...”

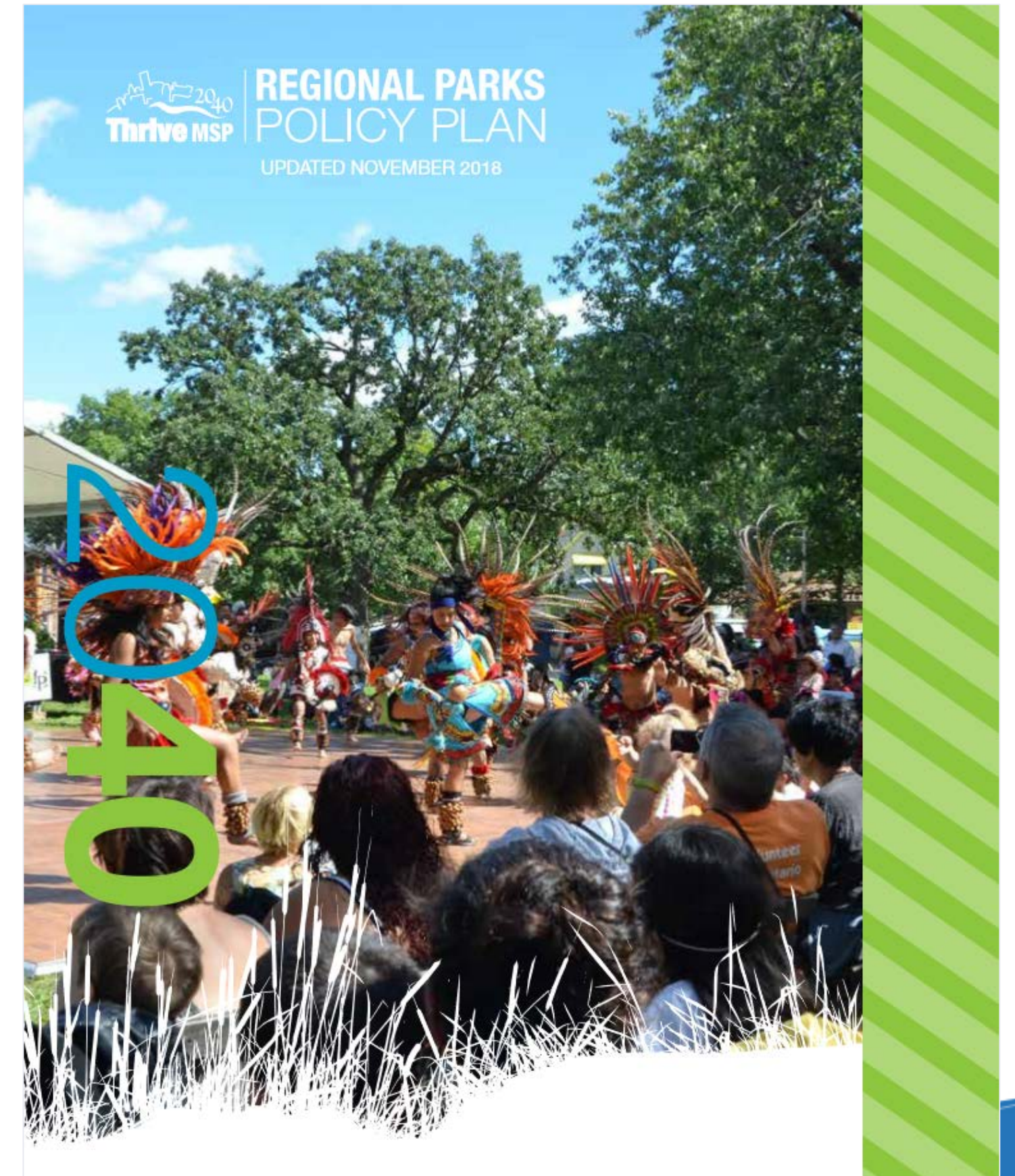
Overview of the Regional Parks System

- Natural resource-based settings
 - Focus on water bodies
- Natural resource-based recreation
- Serve regional audience
- Large acreage
- Nationally renowned system of interconnected regional parks and trails



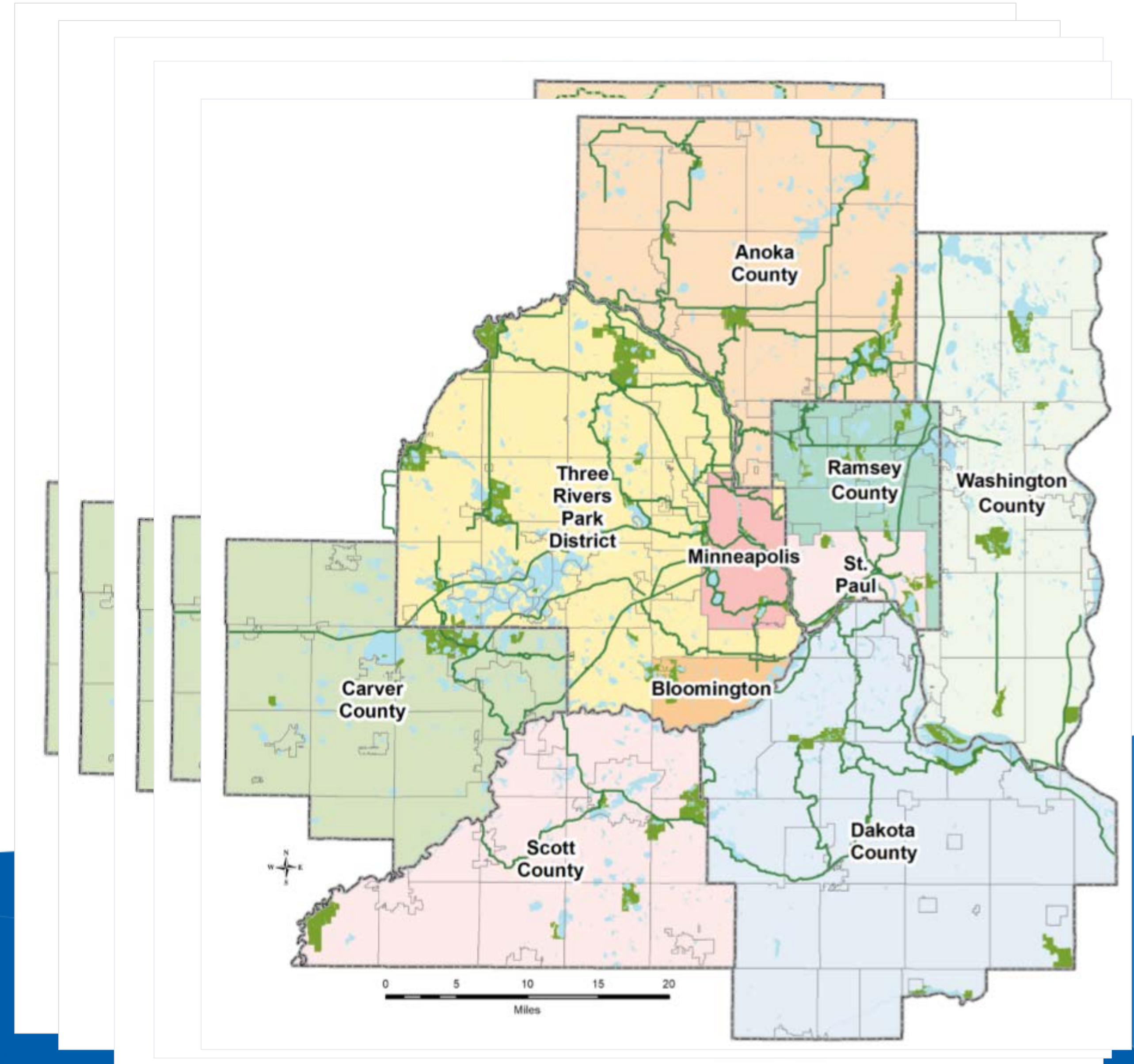
2040 Regional Parks Policy Plan

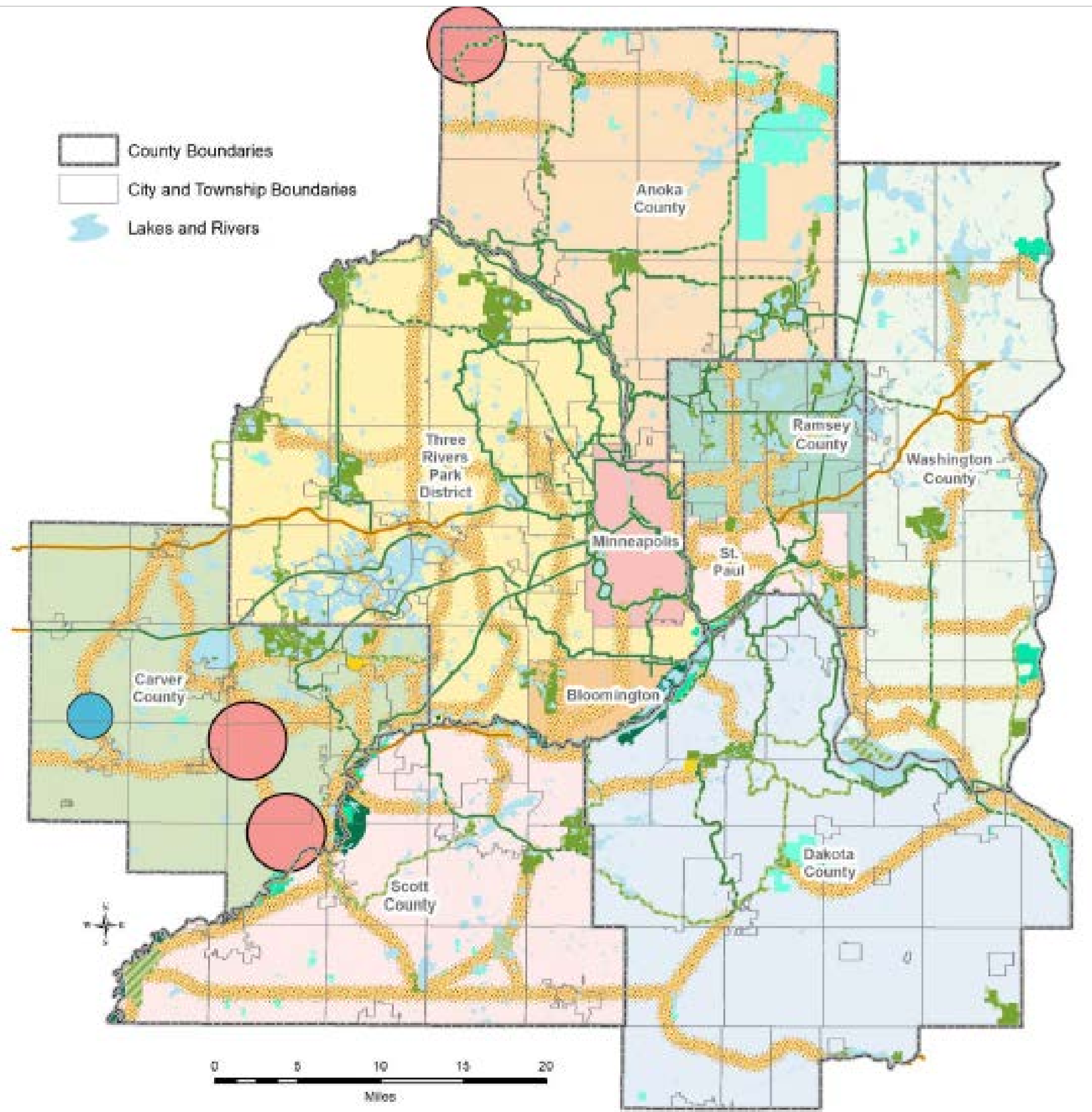
- **Siting and Acquisition:** Identify lands with natural resource and recreation potential, and put in protected status
- **Planning:** Promote and support master planning and integrated resource planning across jurisdictions
- **Recreational Activities and Facilities:** Provide a regional system of recreation opportunities, while maintaining the integrity of the natural resource base
- **Finance:** Help fund the development and maintenance of the system so that all residents of the region have the opportunity to share in the benefits
- **System Protection:** Protect the public investment in the system



Regional Parks System – System Plan

- **44** Regional Parks
- **12** Park Reserves
- **8** Special Recreation Features
- **49** Regional Trails
- **10** Implementing Agencies





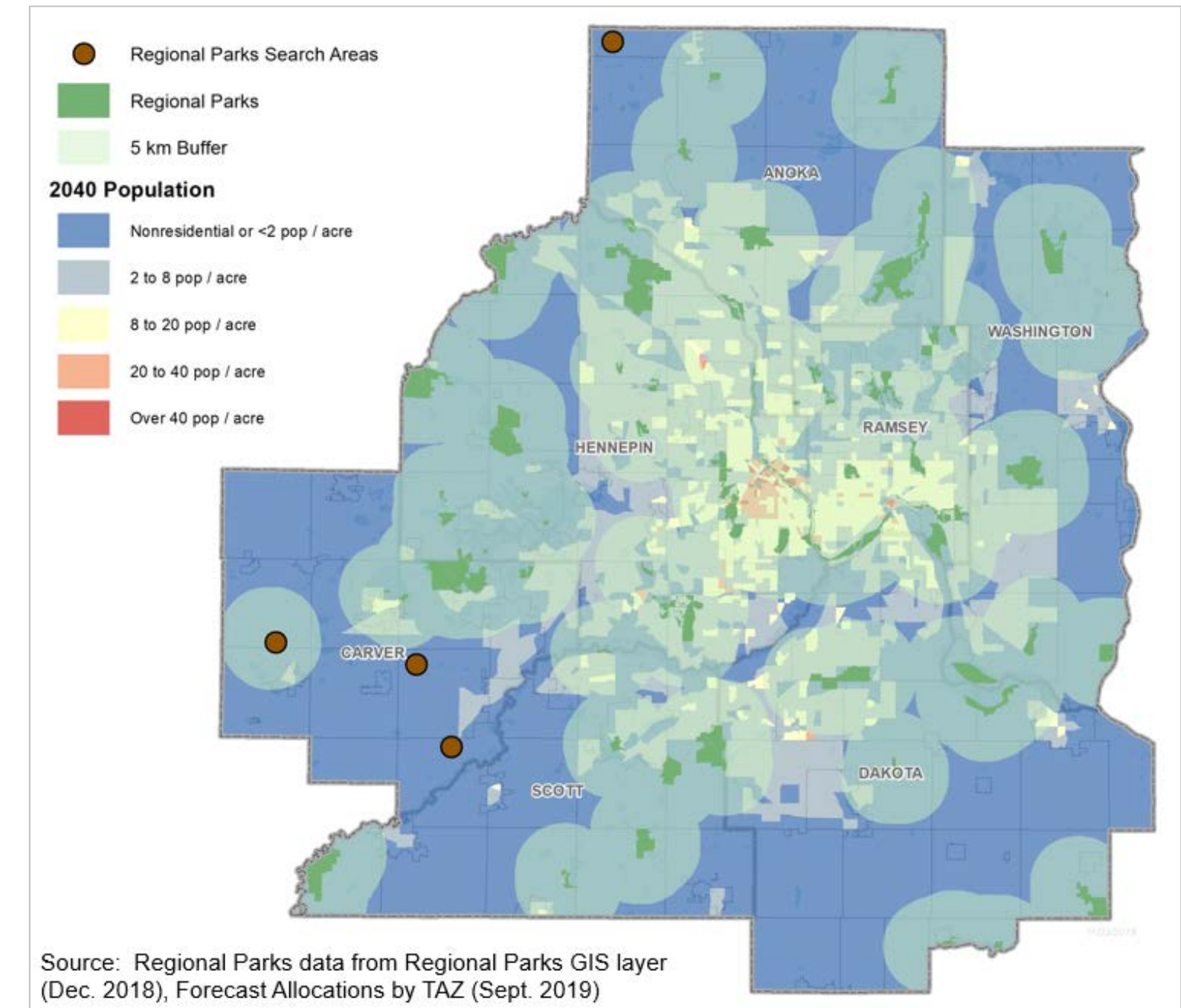
What does a mature or complete Regional Park System look like?
(a.k.a., “What do we want to be when we grow up?”)



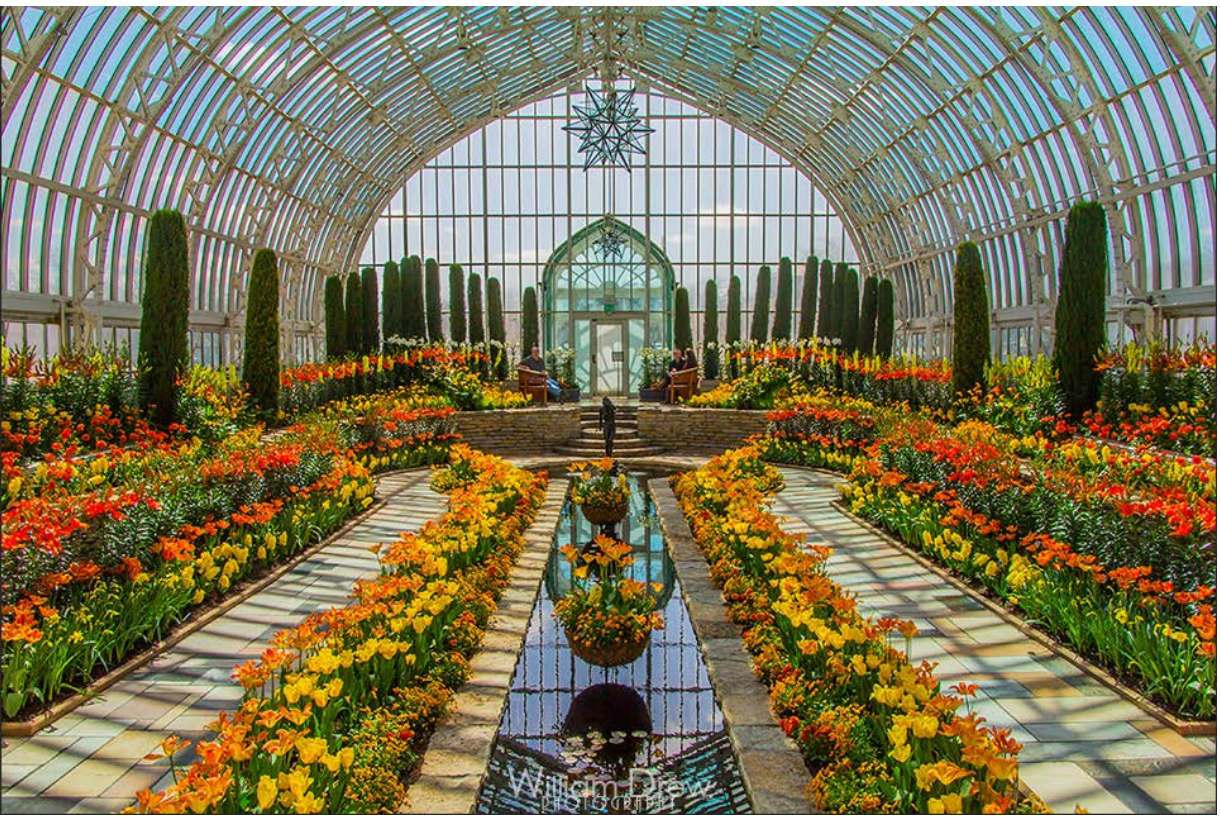
2019-2020 System Additions process to-date

Engaging Regional Park Implementing Agencies, Others

- October – “Hydroclimatic Conditions and Changes in the Twin Cities” by Kenny Blumenfeld, Sr. Climatologist
- November – “Forecasted Demographic Changes in the Twin Cities Metro Area” by Todd Graham, Principal Forecaster
- January – “Contemporary Park and Rec Trends” by Professor Ingrid Schneider
- January – System snapshot: Service areas and geographic balance
- January – Introduction to Sustainable Funding topic



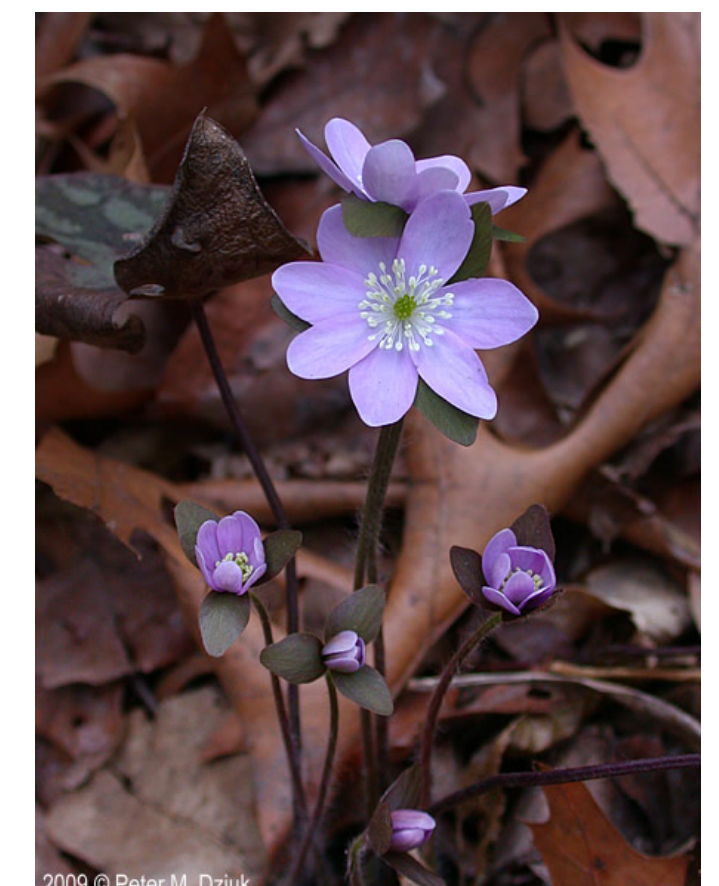
2019-2020 System Additions process – Next steps



- June – Implementing Agencies present proposals to Metropolitan Parks and Open Space Commission (MPOSC)
- July – Council staff present a draft recommendation to MPOSC and Community Development Committee
- August – Propose action to release the *Regional Parks Policy Plan* amendment for public comment on August 26
- October – Public hearing, public comment close
- December – Summary of public comments, impact on *Policy Plan* amendment. Propose action to adopt the *Regional Parks Policy Plan* amendment.

Discussion

- What advice do you have for the Metropolitan Parks and Open Space Commission and Council staff as they review and evaluate system addition proposals in June?



Thank you!



Dan Marckel, Planning Analyst, Research dan.marckel@metc.state.mn.us

Colin Kelly, Planning Analyst, Regional Parks colin.kelly@metc.state.mn.us