

Livable Communities Act

Livable Communities Demonstration Account

Transit-Oriented Development (LCDA-TOD) Grant Category

LCDA-TOD Program

Stephen Klimek, Senior Planner
Stephen.Klimek@metc.state.mn.us

September 17, 2020

Land Use Advisory Committee



Overview

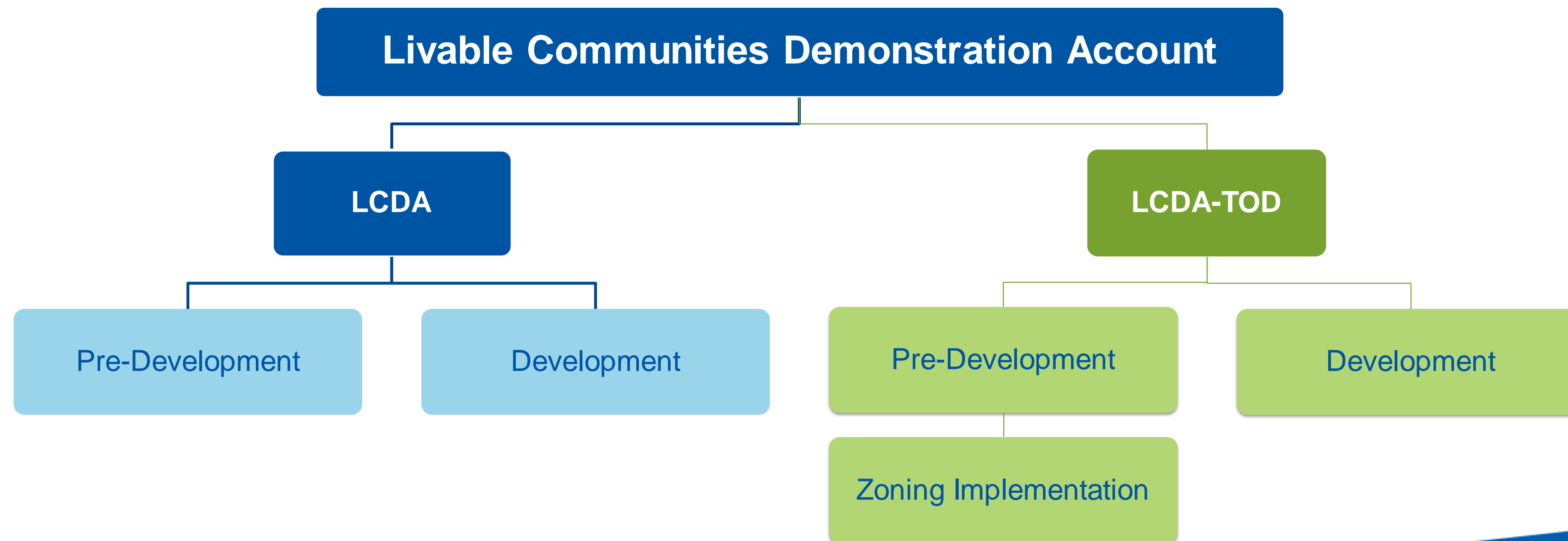
- LCDA-TOD program background
- LCDA-TOD program today
- LUAC input for improving the program

LCA Goals

- Interrelate development or redevelopment, affordable housing, and employment growth
- More compact development or redevelopment
- Mix of housing opportunities
- Public infrastructure that connects communities, attracts investment, and expands job opportunities

Livable Communities Demonstration Account

LCDA-TOD funds development and redevelopment projects that efficiently link housing, jobs, services with transit in order to create inspiring and lasting communities.



LCDA-TOD Purpose

The Council's LCDA-TOD grants promote *moderate to high density development* projects located within *walking distance of a major transit stop* that typically include *a mix of uses* such as housing, jobs, restaurants, shops, and entertainment.

Transit in the Region

Light Rail Transit



Blue Line
Blue Line Extension
Green Line
Southwest Line

Commuter Rail



Northstar Line

Bus Rapid Transit



A, C, D Lines
Red, Orange, Gold &
Rush Lines
Riverview Streetcar

High-Freq Local Bus



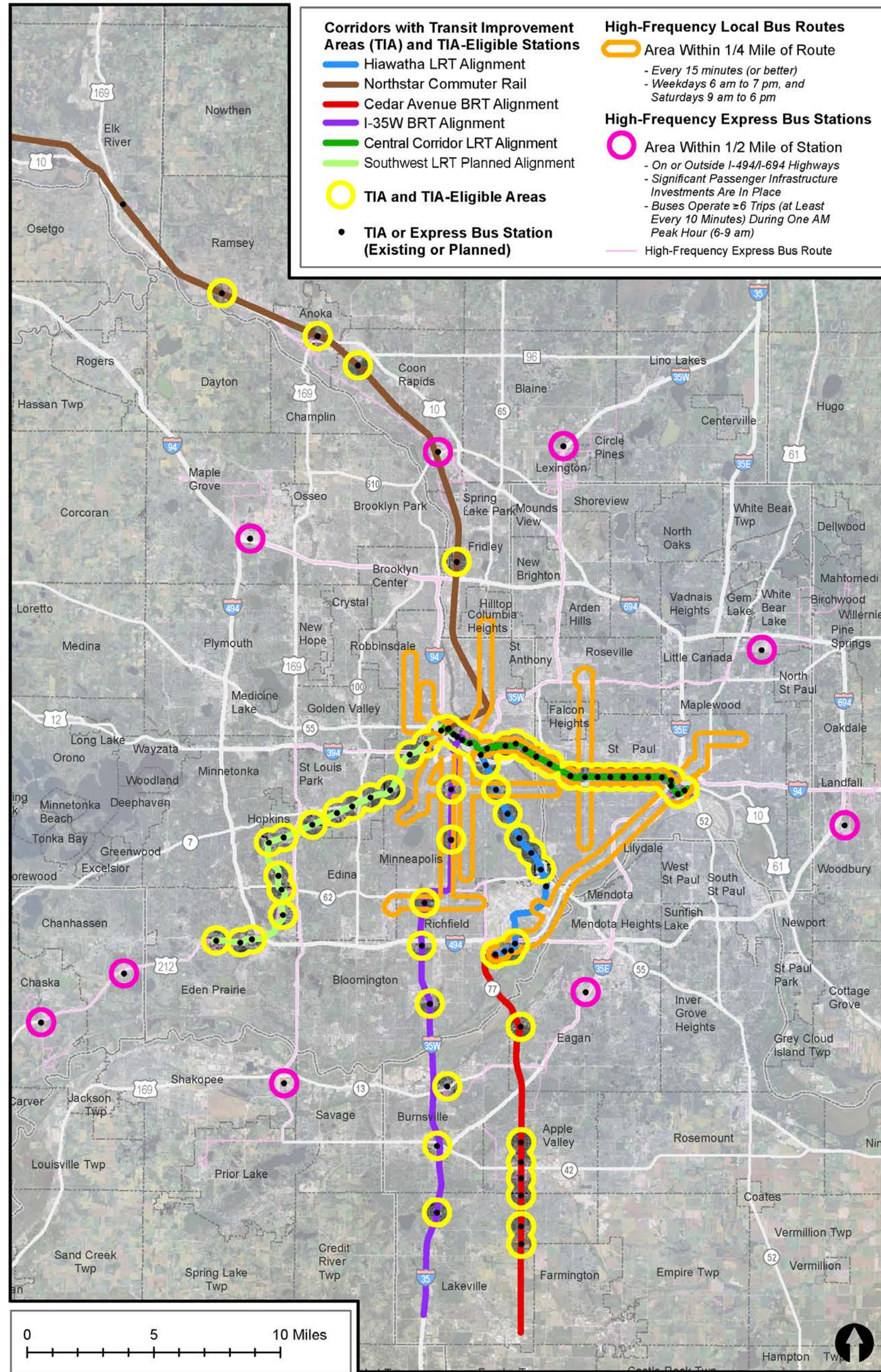
Routes 2, 6, 10, 11,
18, 21, 64, 515

High-Freq Express Bus

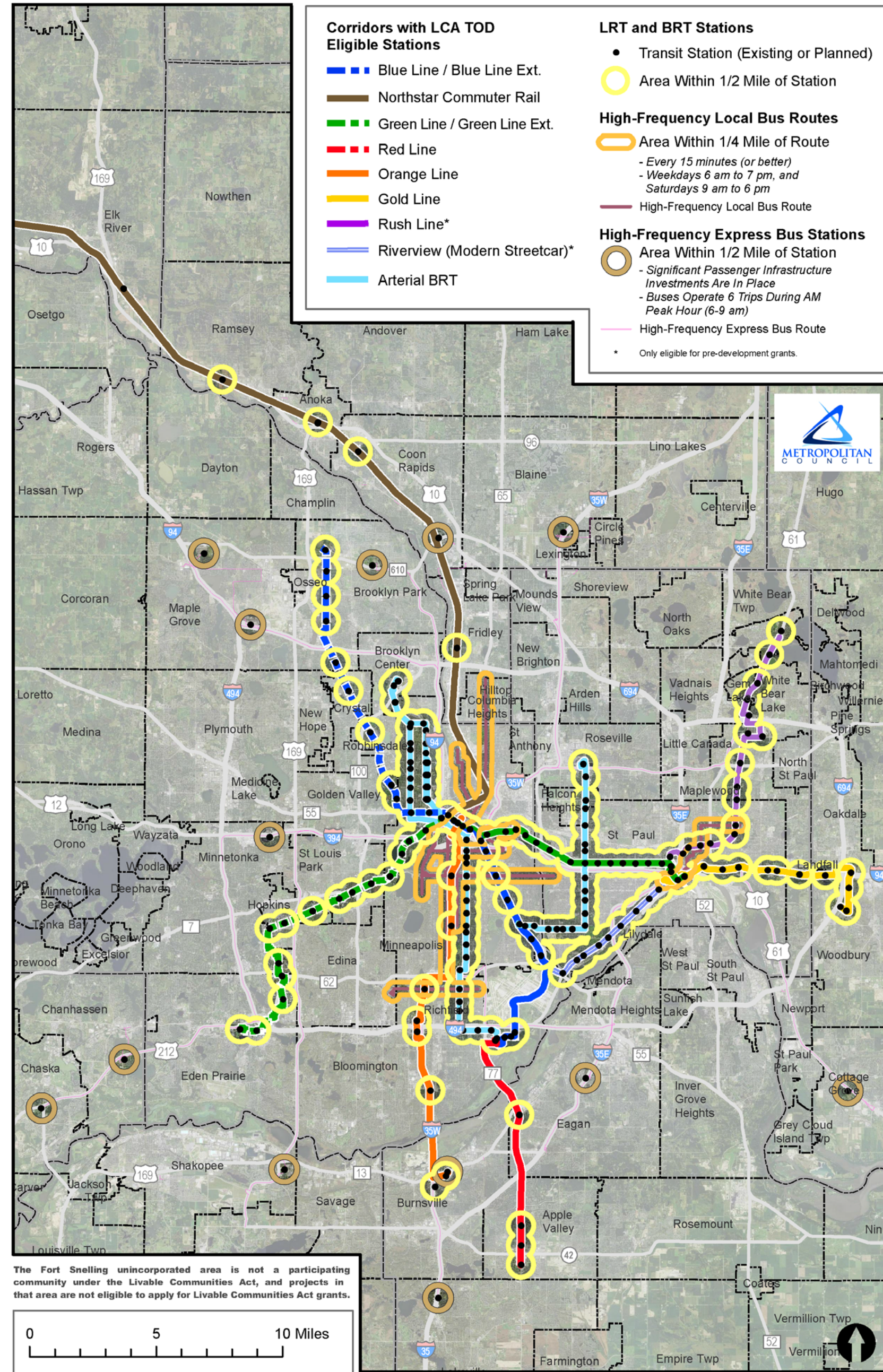


Park & Ride Lots and
Transit Centers

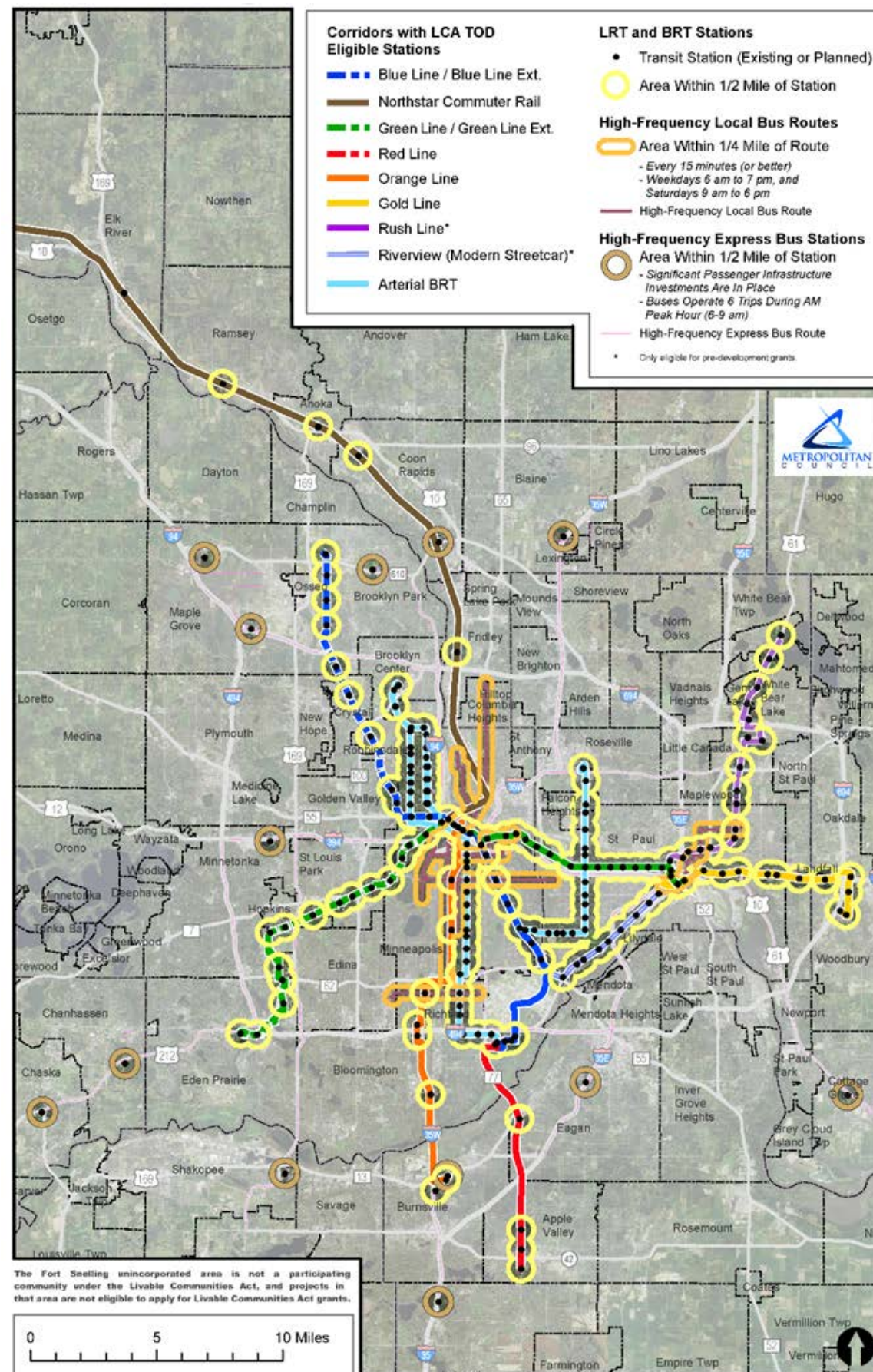
LCA TOD Eligible Areas



LCA TOD Eligible Areas



2020 LCDA-TOD Eligible Areas



Corridors with LCA TOD Eligible Stations

- Blue Line / Blue Line Ext.
- Northstar Commuter Rail
- Green Line / Green Line Ext.
- Red Line
- Orange Line
- Gold Line
- Rush Line*
- Riverview (Modern Streetcar)*
- Arterial BRT

LRT and BRT Stations

- Transit Station (Existing or Planned)
- Area Within 1/2 Mile of Station

High-Frequency Local Bus Routes

- Area Within 1/4 Mile of Route
- Every 15 minutes (or better)
- Weekdays 6 am to 7 pm, and Saturdays 9 am to 6 pm
- High-Frequency Local Bus Route

High-Frequency Express Bus Stations

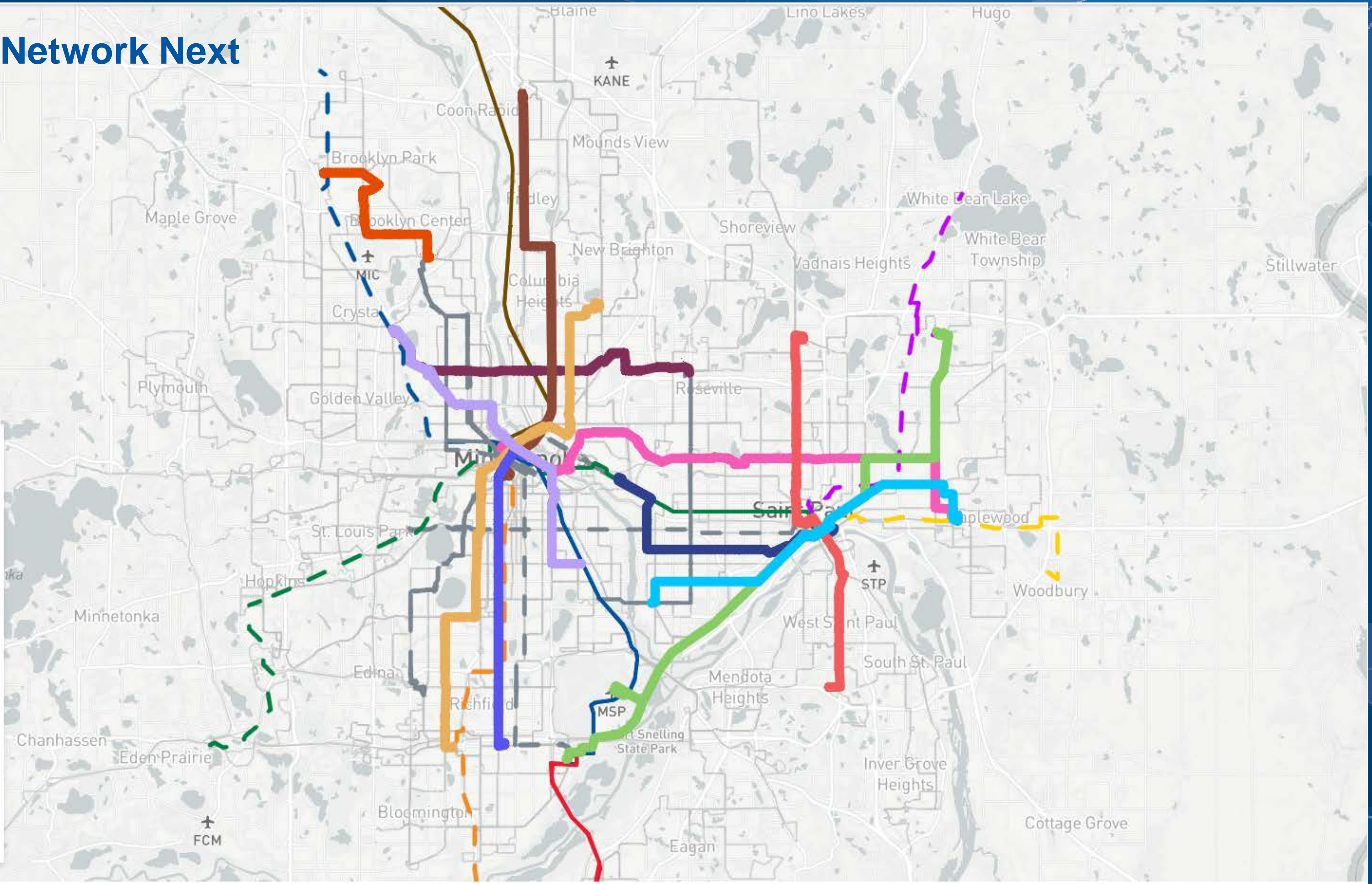
- Area Within 1/2 Mile of Station
- Significant Passenger Infrastructure Investments Are In Place
- Buses Operate 6 Trips During AM Peak Hour (6-9 am)
- High-Frequency Express Bus Route
- * Only eligible for pre-development grants.

Metro Transit Network Next

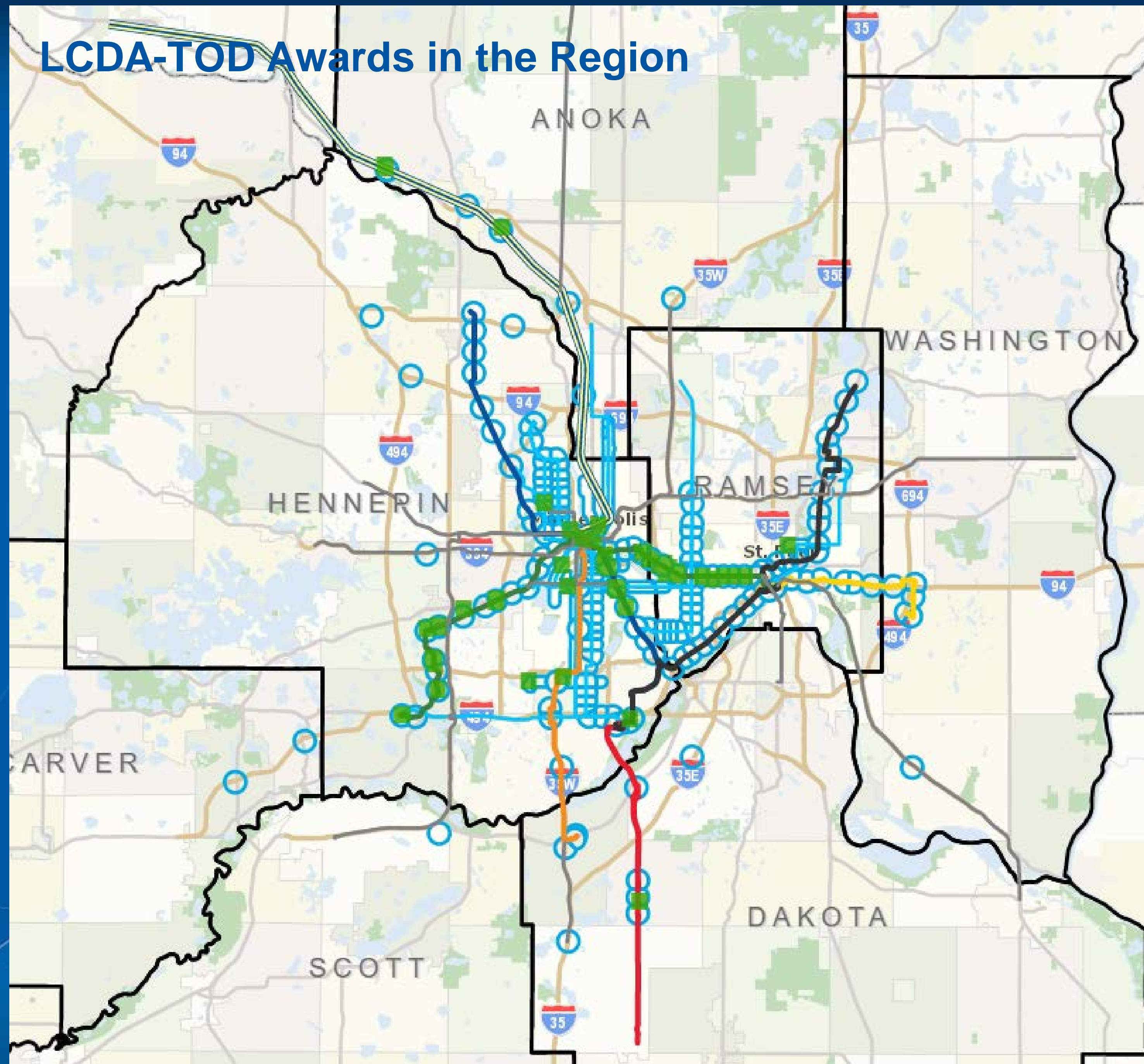
Potential BRT Corridors

Potential BRT Corridor

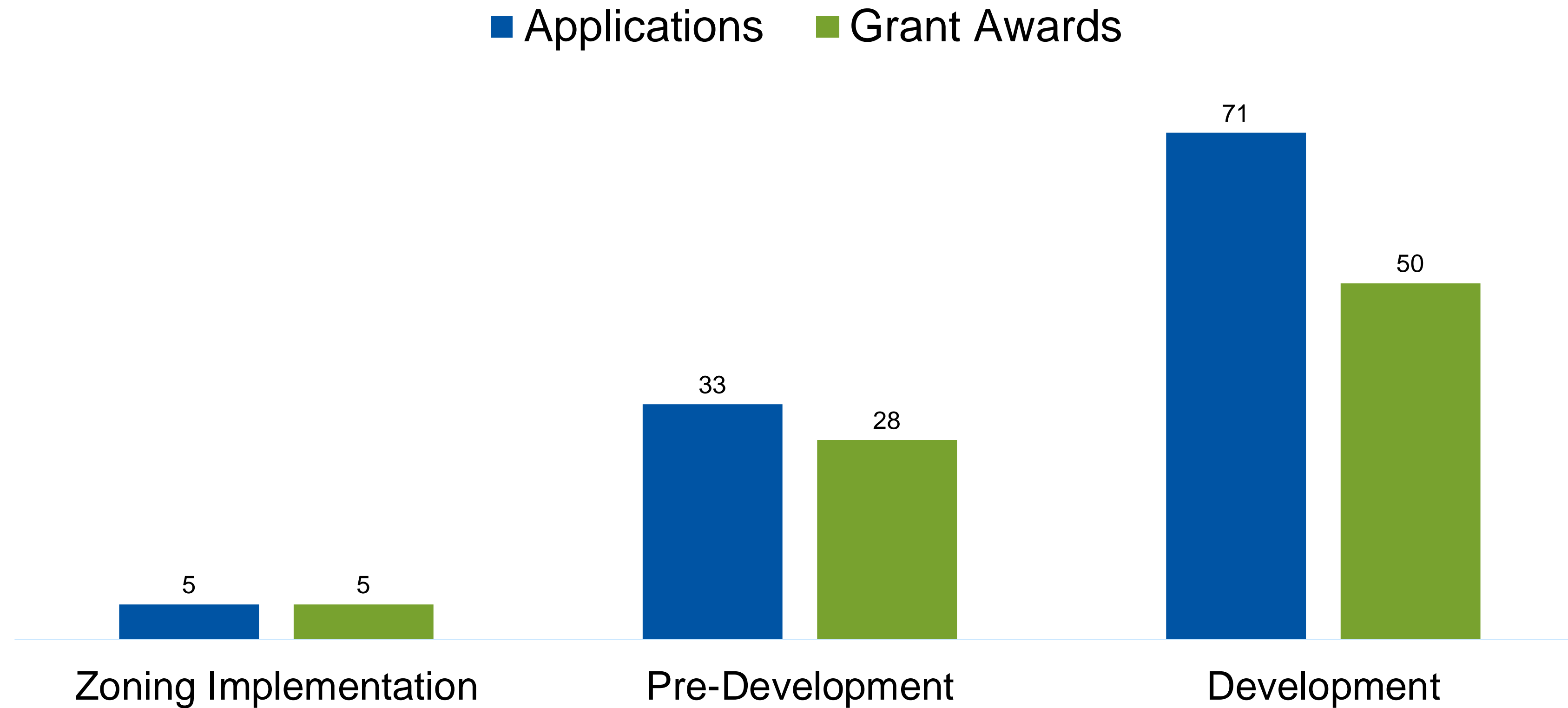
- 63rd Avenue/Zane
- Central
- Como/Maryland
- Grand Avenue
- Johnson/Lyndale
- Lowry
- Nicollet
- Randolph/East 7th
- Rice/Robert
- West 7th/White Bear
- West Broadway/Cedar



LCDA-TOD Awards in the Region

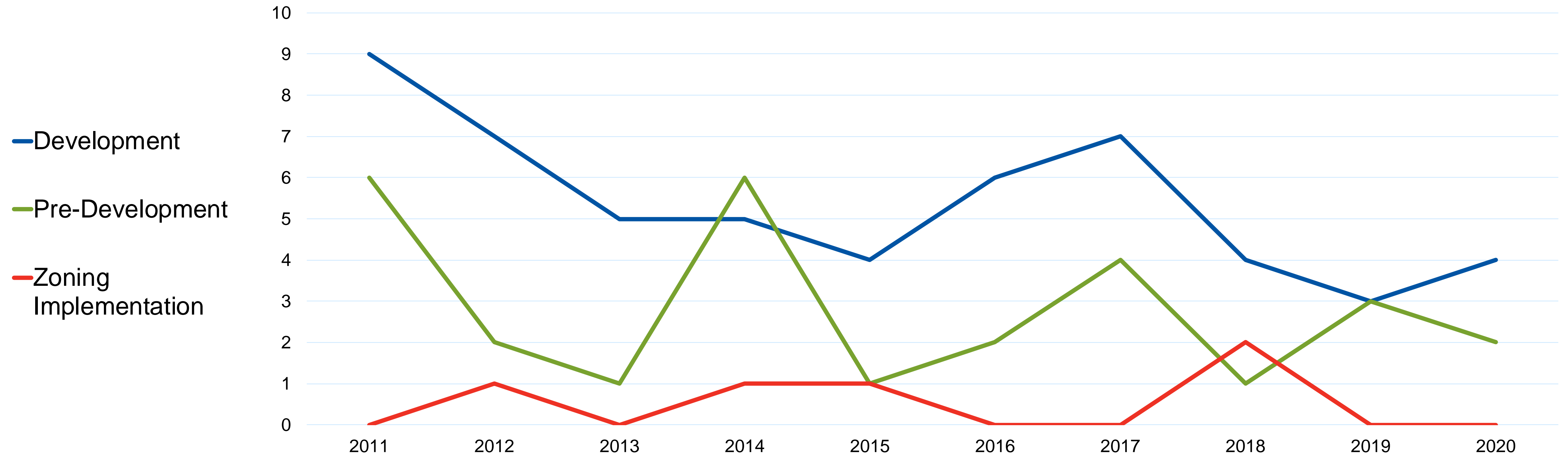


LCDA-TOD by the Numbers



LCDA-TOD by the Numbers

LCDA-TOD Program Grant Awards by Year



TOD Projects Awarded

High Density & Mixed Use



Mill City Quarter,
Minneapolis

Affordable Housing



Hamline Station,
St. Paul

Public Infrastructure



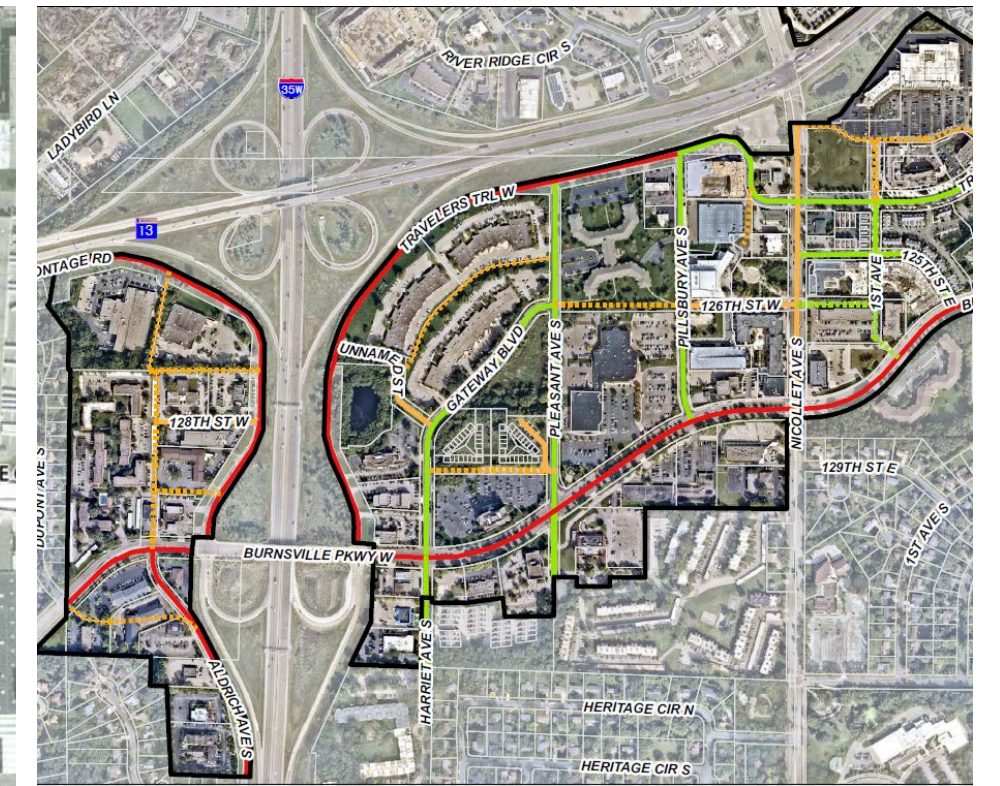
The ARTery,
Hopkins

Development Planning



Northstar TIF
Masterplan,
Fridley

Design & Zoning



TOD Zoning Ordinance,
Burnsville

Questions

- How has transit-oriented development or planning shown up in your community, and how has it evolved over time?
- What should the LCDA-TOD grant program support? How should we distinguish TOD's from other projects and other Council grant programs in achieving our goals (Equity, affordable housing, employment growth, efficient land use)?
- Is there a continued need for the TOD Zoning Implementation grant?