



# Scenario Planning

Land Use Advisory Committee



November 17, 2022

Baris Gumus-Dawes



# Overview

- What is scenario planning?
- What is its purpose?
- How does it work?
- Land use implications

# Traditional vs. Scenario Planning



- What kind of uncertainties shape the region?
- How do they impact the region as a whole?
- How do they affect the Council's infrastructure and services?
- What policies can we adopt to address those impacts?

# Disclaimer: What this project is not

## **We are not picking a future.**

- Instead, we are exploring our preparedness for a variety of futures.

## **This is not our official 2050 regional forecast.**

- We are using the same forecast tools, but in a hypothetical planning exercise.

# What is the purpose of scenario planning?

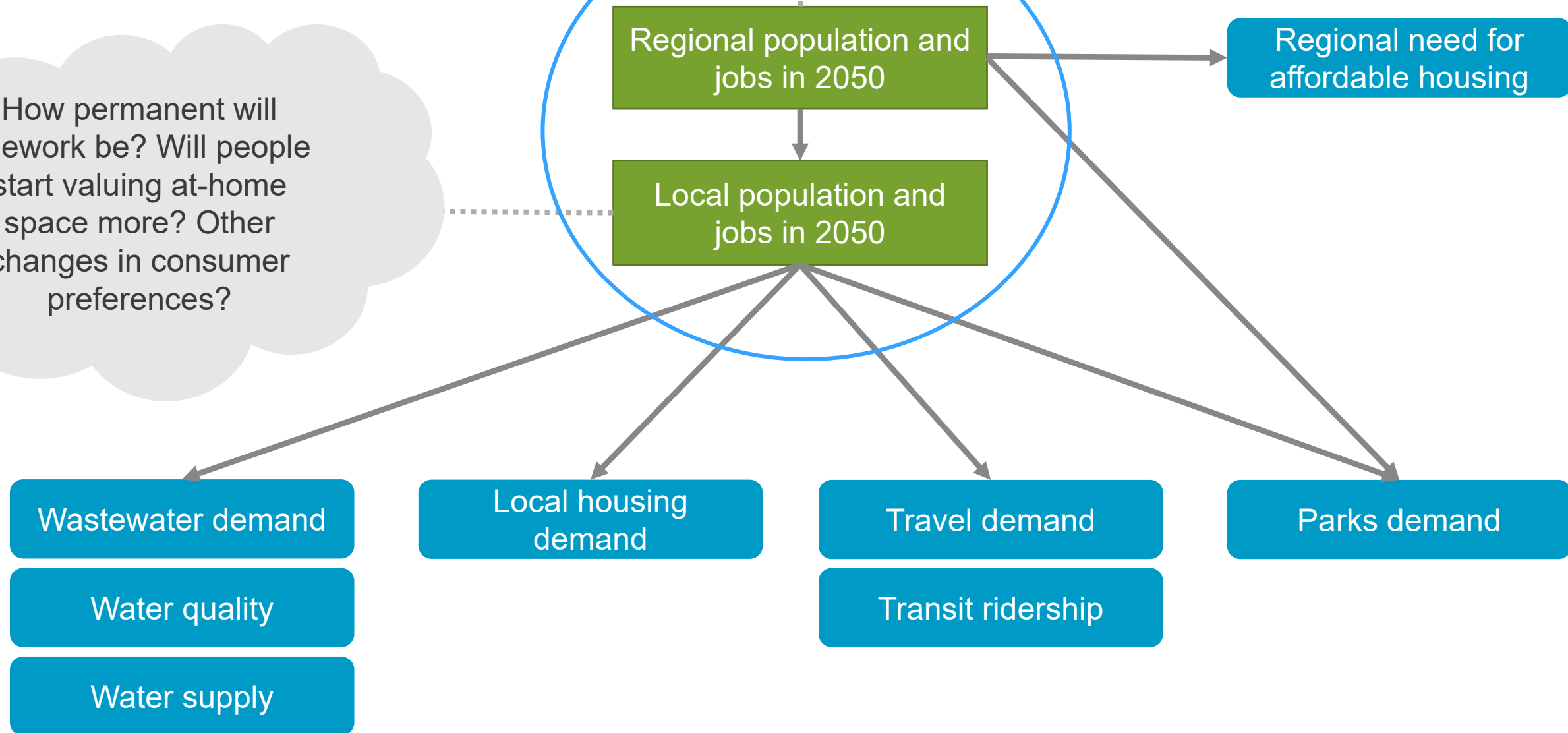
**Use scenarios to assist policy makers in various phases of policy planning.**

Scenarios can help:

1. reveal land use goals and objectives
2. identify risks and opportunities and policy gaps
3. explore policy tradeoffs and synergies
4. inform future land use policy choices

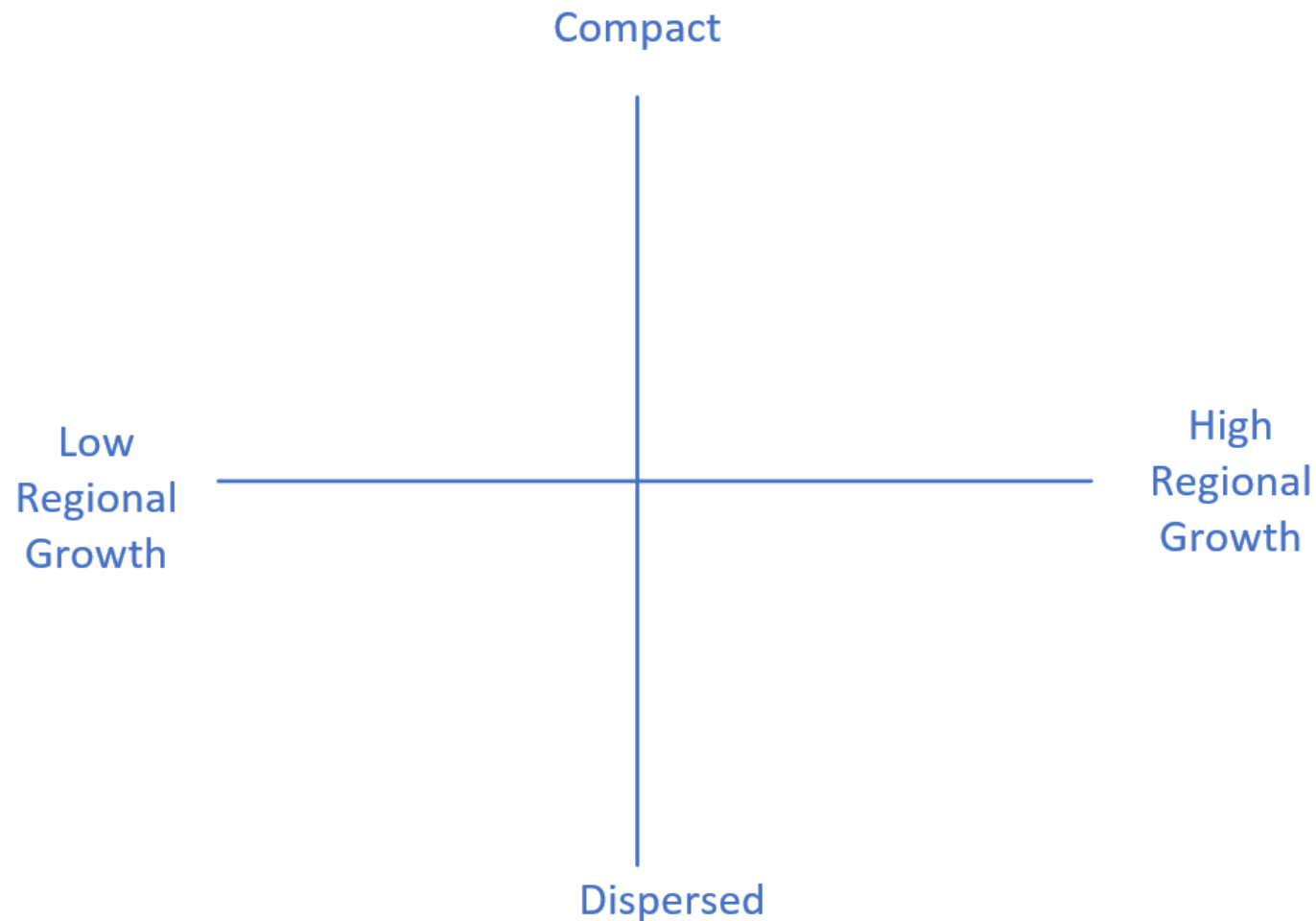
How will the pandemic affect birth rates? How will telework impact net migration to the region? How many climate refugees will we get? Will immigration levels change?

How permanent will telework be? Will people start valuing at-home space more? Other changes in consumer preferences?



# Different Scenarios

## Regional Growth: How much? Where?



- High regional growth/compact development
- High regional growth/dispersed development
- Low regional growth/compact development
- Low regional growth/dispersed development
- Business as usual scenario: what is likely to happen if existing patterns continue?



# Extent of growth



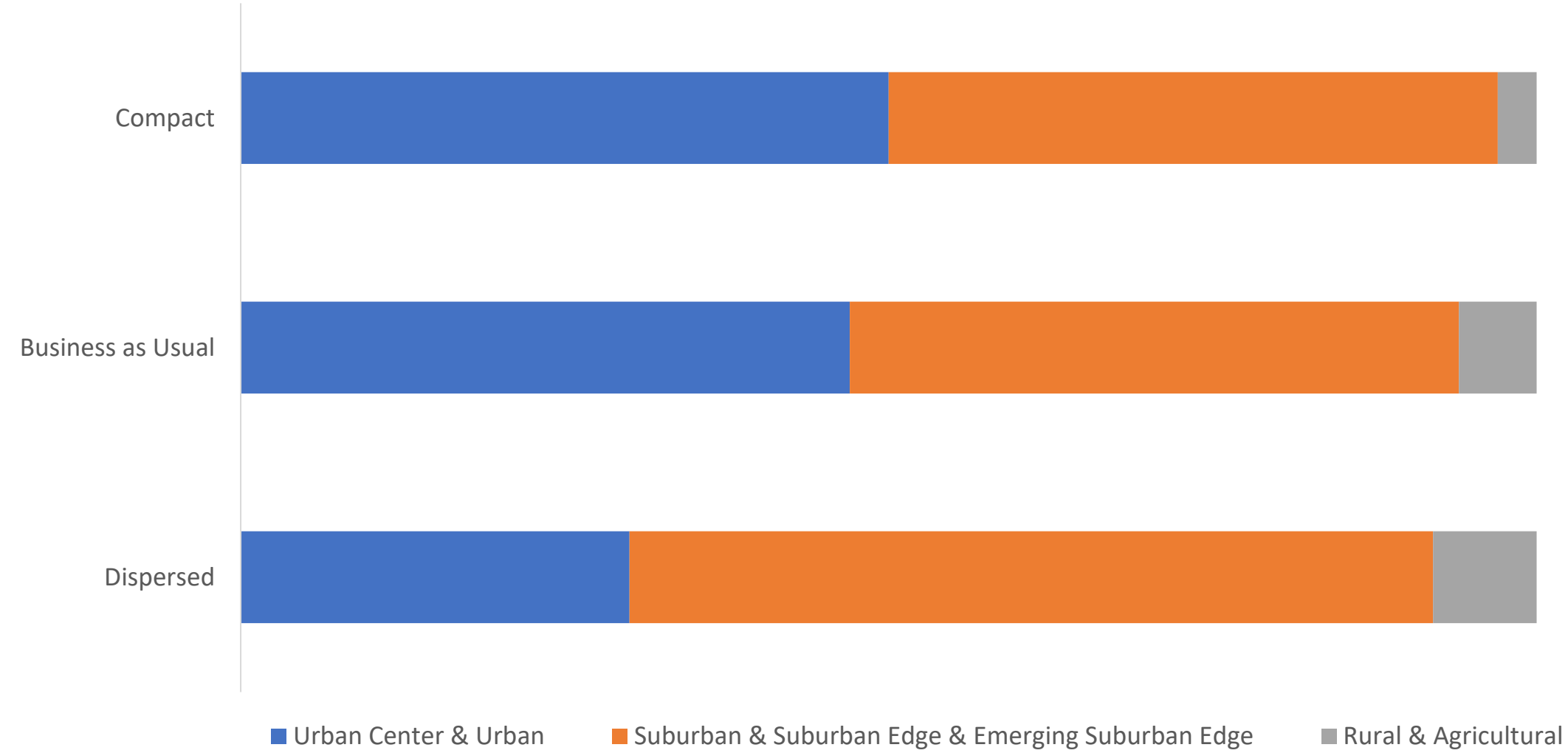
## Higher/lower than currently forecasted regional growth

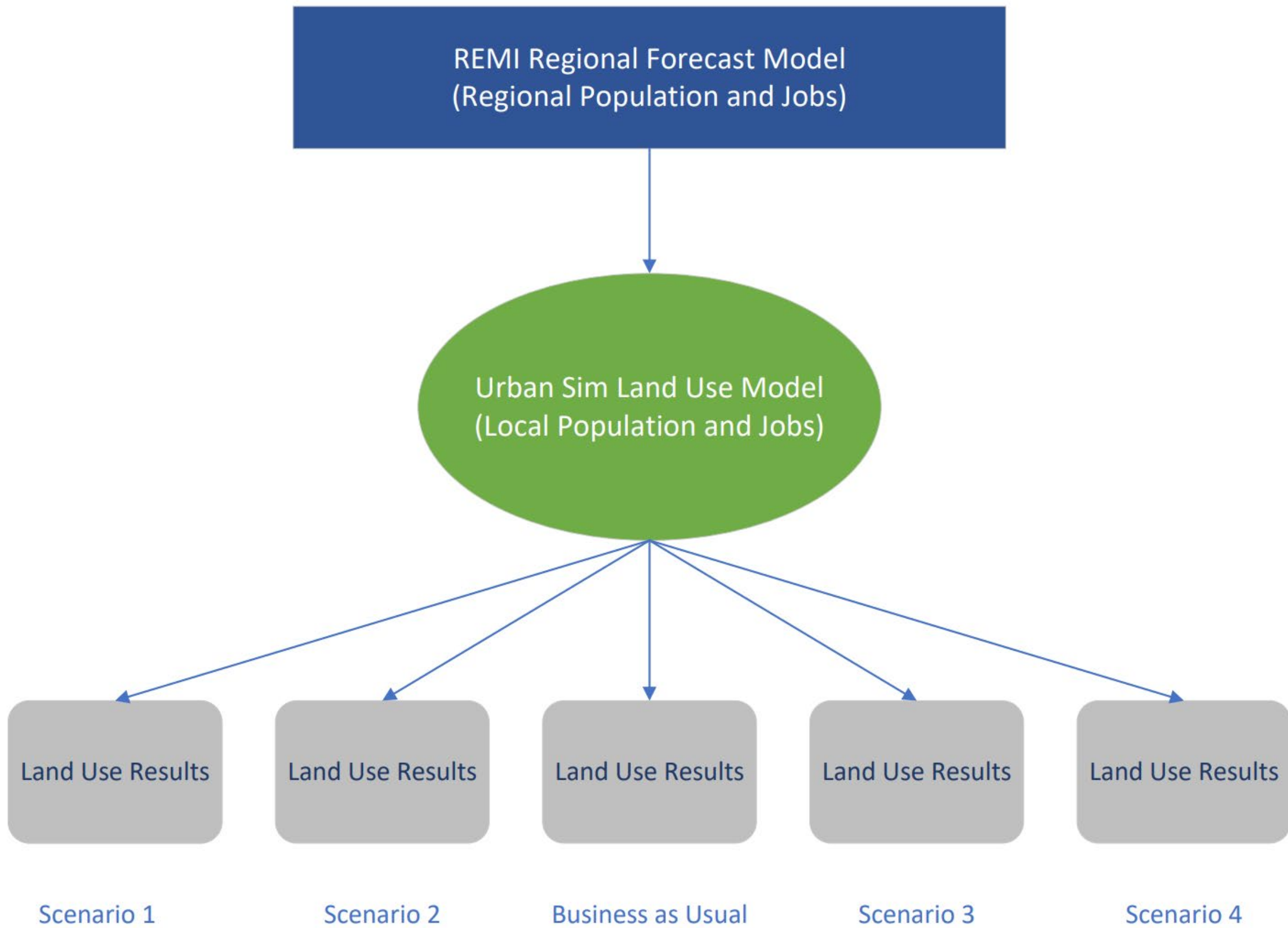
- High growth: 50% more than currently forecasted regional growth
- Low growth: 25% less than currently forecasted regional growth



# Location of growth

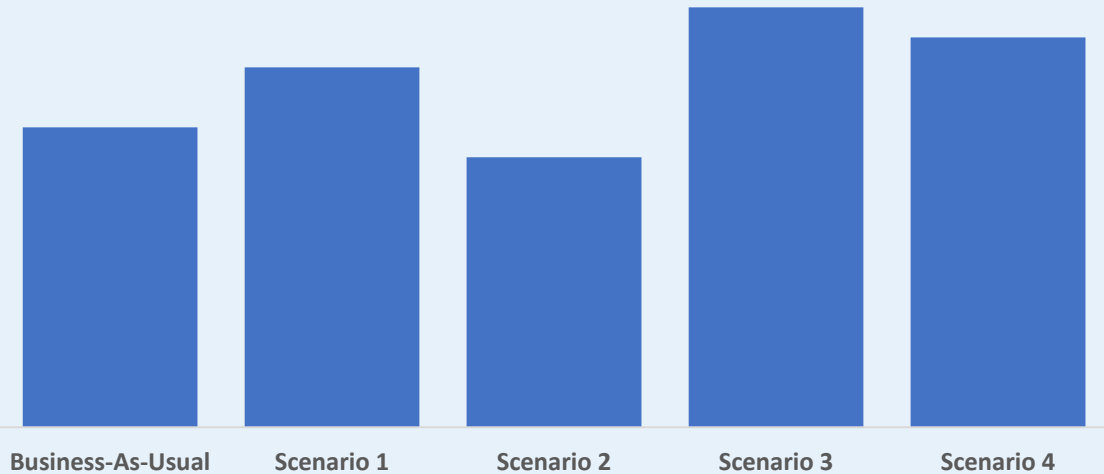
## More compact/dispersed than Business as Usual



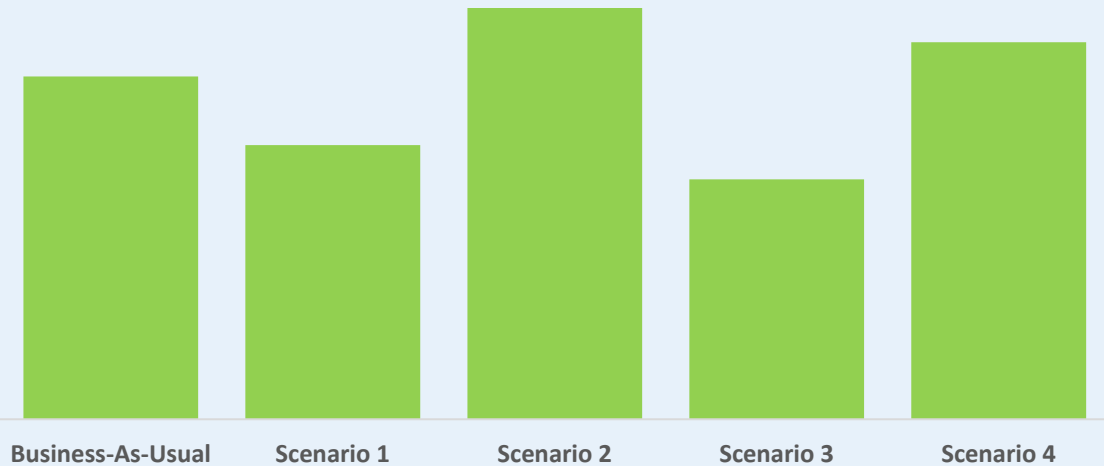


# Examples of land use modeling results

### Acres of Land Used



### Loss of Agricultural Land





# What about equity?



## We can explore the equity implications of each future by asking these questions:

- How would this specific type of change impact different communities?
- Which communities would benefit from this future?
- Which communities would be negatively impacted?

# Land Use Connections



## What could a scenario framework do for land use policy?

**Scenario analysis can make Council policies resilient to uncertainty.**

- It helps us evaluate each policy under multiple futures.

**Scenario analysis can help align investments across policy areas.**

- It informs our understanding of policy trade-offs and synergies.

**At the heart of scenarios is how we are using land.**

- Scenario analysis can help us think about and develop policies to achieve regional goals and mitigate undesired outcomes.



# Next Steps



- Get your feedback on measures that are of interest to you.
- Come back to you with actual model results so that you can evaluate different futures by using these results.



# Today's Question



## What measures do you want to see to compare futures?

- Scenario measures may show connections between different land use futures and other policy areas such as water and transportation.
- Examples:
  - Water demand
  - GHG emissions
  - Job accessibility
  - Acres of land used
  - Acres of agricultural land lost



**Thank you!**

**Baris Gumus-Dawes  
Planning Analyst  
Baris.Dawes@metc.state.mn.us  
(651) 602 1331**

