



2050 Comprehensive Planning Technical Assistance Overview

Land Use Advisory Committee

Angela R. Torres and Emma Dvorak

July 2025



Today's Agenda



Technical Assistance Overview

Sector Representatives and Technical Teams

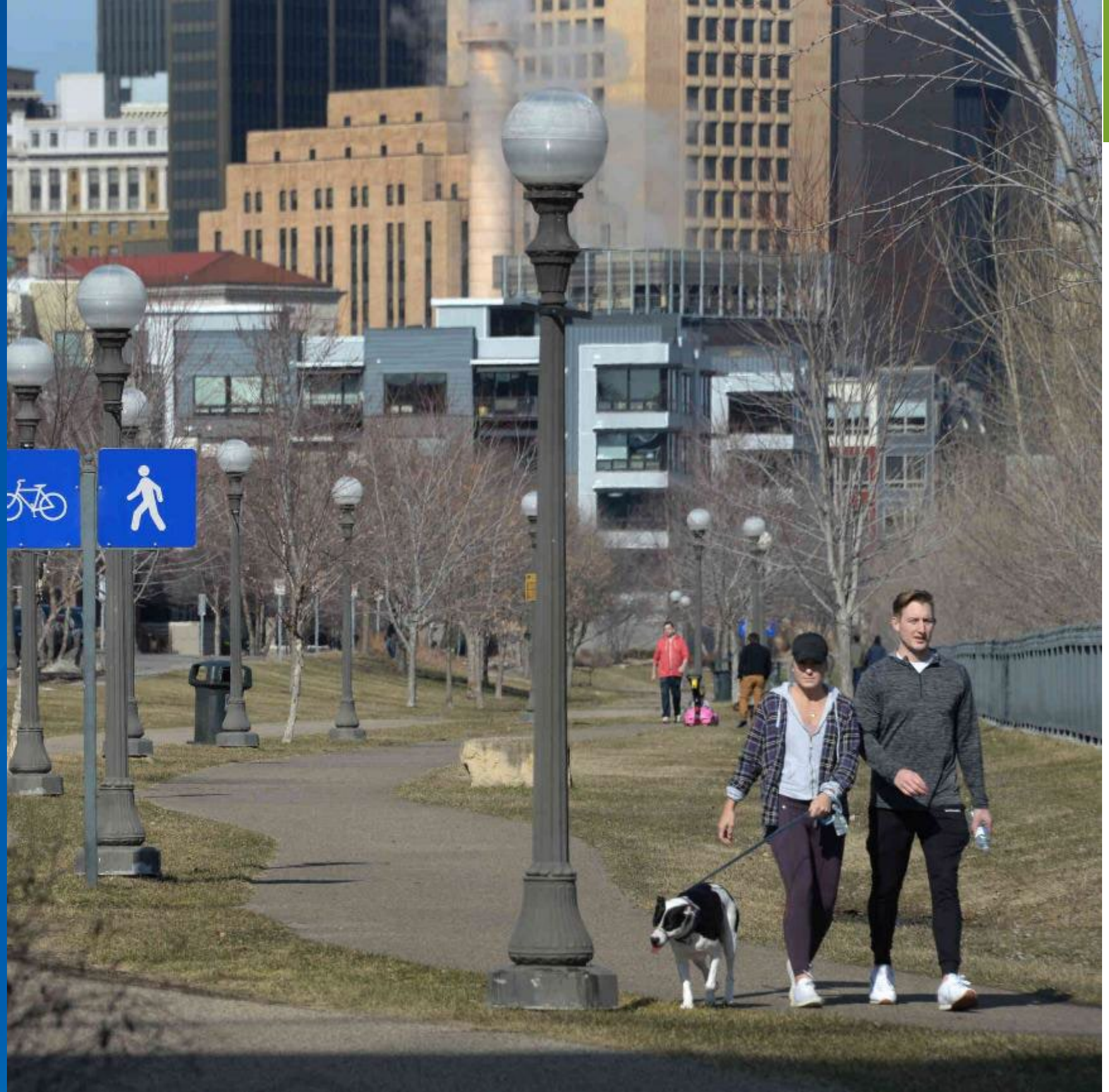
Local Planning Handbook Update

- Plan Elements
- Community Pages
- Checklist of Minimum Requirements
- GHG Strategy Tools and Climate Action Toolkit
- Natural Systems Planning Tools
- Housing Toolkit

Planning Assistance Grants and Small Communities Planning Program

PlanIt Program Update

Sector Representatives and Technical Teams





Sector Representatives

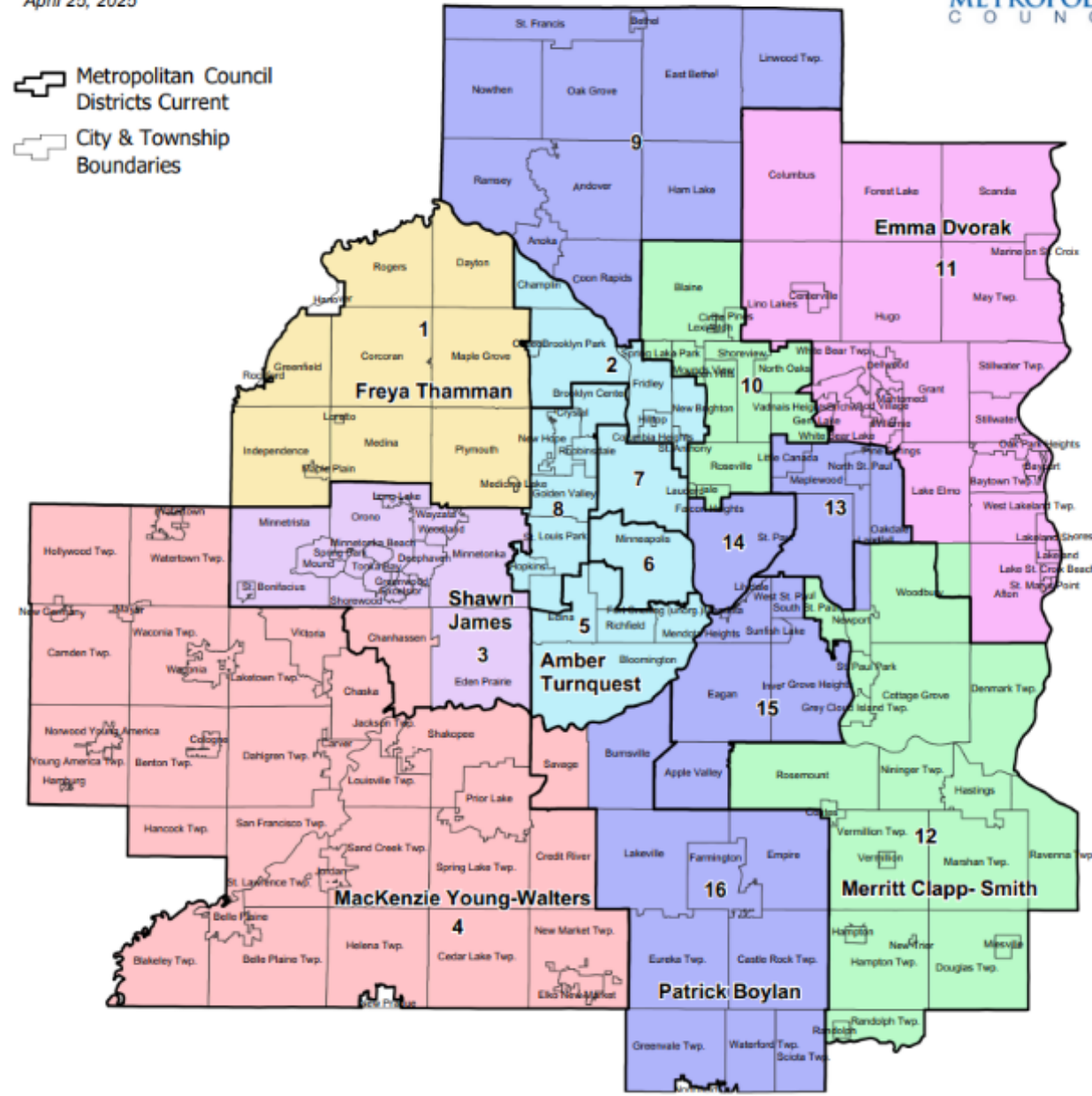
Sector Representatives

- Communicate across boundaries and work units
- Provide technical assistance to local governments
- Coordinate the Council's review process
- Develop and implement regional policy
- [Link to Current Sector Representatives Map](#)

Metropolitan Council Sector Representatives

April 25, 2025

-  Metropolitan Council Districts Current
-  City & Township Boundaries



Training for Technical Reviewers

Comprehensive Plan Review Training and Criteria Development

Training program for technical reviewers

- Prepare for the 2050 process
- Develop and hold periodic “refresher” events
- Train and onboarding new staff throughout the process.

Goals

1. **Shared understanding:** knowledge of the standards and criteria for conducting reviews
2. **Communicate:** share reasoning behind review determinations internally
3. **Efficiency and Transparency:** Identifying the errors and how to best communicate to local governments

Supporting Process Updates

Analyze, review, and revise process guidance as needed

- Most recent update (November 2022):
Administrative Review of Comprehensive Plan Amendments
- Program Updates
 - Plat Monitoring Program
- Updates to Process and Guidelines (planned or underway)
 - MUSA Implementation Guidelines
 - Flexible Development Guidelines
 - Preliminary Plan Review Process
 - Comprehensive Plan Review Process



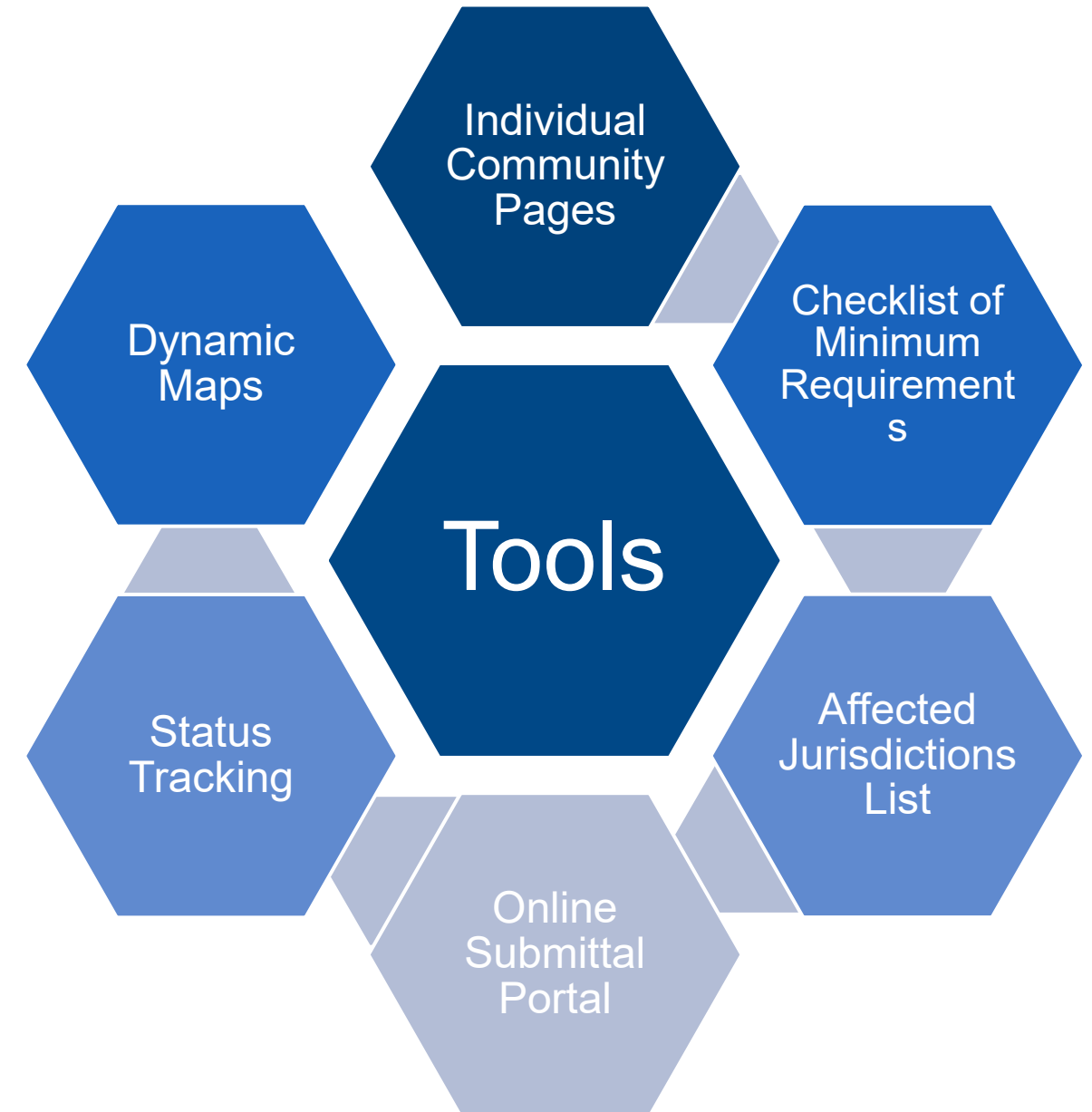
Local Planning Handbook Update



Local Planning Handbook

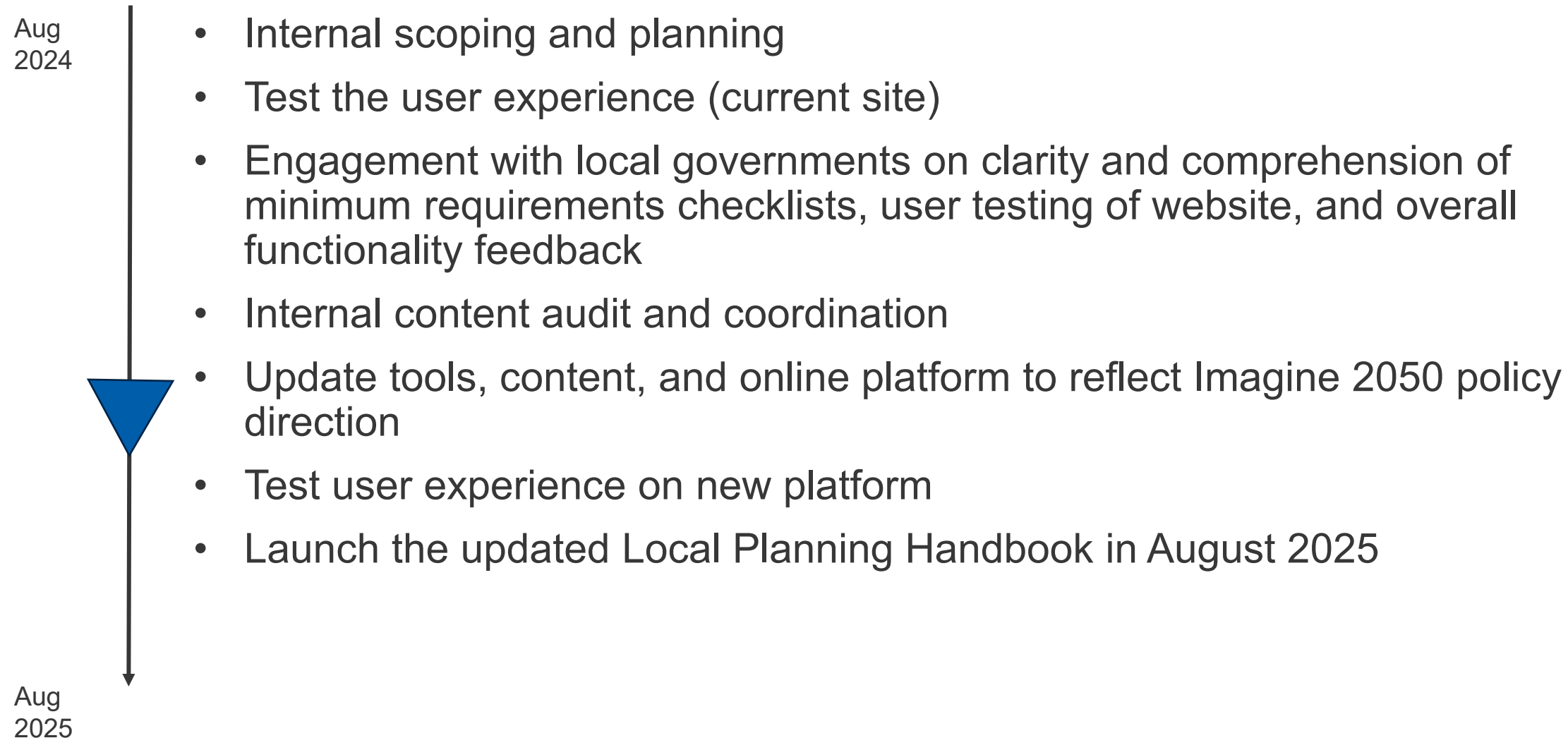
The One-Stop-Shop for Comprehensive Planning

- Designed to support communities with the update of their local comprehensive plans.
- Clear guidance on minimum requirements and how to meet them
- Tools, maps, resources, and technical assistance
 - To help meet minimum requirements
 - To get more out of their local planning process
 - To help with a variety of planning issues of interest to communities across the region
- Community-specific information and checklists
- Training and resources beyond the minimum requirements



2050 Local Planning Handbook Update

Process and Timeline



Plan Element Pages

Landing page for each required chapter

- Explore minimum requirements and related resources
 - Dynamic tools
 - Factsheets
 - Templates
 - Policy Plan Summary
 - Links to External Resources
- Get More Out Of Your Plan
 - Information and resources to help communities go beyond the minimum requirements.

LOCAL
PLANNING
HANDBOOK

Local Planning Handbook

Regional Planning Process

Community Pages

Required Plan Elements

> Land Use

Housing

Transportation

Water Resources

Parks and Trails

Climate

Natural Systems

Implementation

Review Process

Education and Training


Resources

Land Use

NOTE: This is a test environment. All content is subject to change.

To maximize returns on the regional investment in sewer, water, roads, parks, and other infrastructure, we need to consider how land will be used. Existing and future uses translate a community's forecasted growth into where, when, and how much development occurs in the community. It is this effort that enables effective planning for infrastructure. Other considerations include housing needs, employment patterns, recreational space, and commercial activities. The goal is to create livable neighborhoods, easy access to jobs, connected street patterns, and to protect our natural resources.

The information found here will help you develop a land use plan that meets minimum requirements of the [Metropolitan Land Planning Act](#) and is consistent with adopted Council plans and policies. We also identify resources that can help you to meet [minimum statutory requirements](#). This section also includes optional ideas and examples that you may use to supplement your land use plan.



Land Use Minimum Requirements

Community: All

Topic: All

What's new? All Requirements

Clear Filters

Topic	ReqID	Requirement	We can help!
Forecasts and Community Designations	1.0	Include a table of forecasted population, households, and employment for 2030, 2040, and 2050, consistent with the Met Council's forecasts.	Local Planning Handbook: How to Revise a Local Forecast Change
Forecasts and Community Designations	1.0	Include a table of forecasted population, households, and employment for 2030, 2040, and 2050, consistent with the Met Council's forecasts.	Visit your Community Page
Forecasts and Community Designations	2.0	Met Council forecasts must be used consistently throughout your entire comprehensive plan.	None
Forecasts and Community Designations	2.1	Your transportation plan needs to utilize allocated forecasts to transportation analysis zones (TAZs).	Transportation Analysis Zones (Official TAZ System and TAZ Maps) with Current Forecasts, Communities, Minnesota Generalized Corridor
Forecasts and Community Designations	2.2	Your water and wastewater plans need to reflect forecasts to plan for urban services.	Visit your Community Page
Forecasts and Community Designations	2.3	Your land use plan must reflect and accommodate your forecasts.	Visit your Community Page
Forecasts and Community Designations	3.0	Include a map acknowledging your regional Community Designation(s) and state the overall density expectations for your Community Designation(s).	Imagine 2050 Community Designations, Minnesota Generalized Corridor
Forecasts and Community Designations	3.0	Include a map acknowledging your regional Community Designation(s) and state the overall density expectations for your Community Designation(s).	Visit your Community Page
Existing Land Use	4.0	Provide an Existing Land Use Map with a land use legend.	Generalized Land Use 2050 - Resources, Minnesota Generalized Corridor
Existing Land Use	4.0	Provide an Existing Land Use Map with a land use legend.	Local Planning Handbook: Ex Sheet 2014 Generalized Land Use Definitions

Microsoft Power BI

Get More Out Of Your Plan

This section contains hyperlinked resources - static documents and websites alike - that are intended to help communities get the most out of their comprehensive plan. Each resource is "nested" by topics from the [2050 Land Use Policy](#). These topics and policy language are drawn from the

IMAGINE2050

Metropolitan Council

9

Community Pages: Personalized Content

Regional interactive Map

Key Contact Info


Downloadable Data:

- Population Forecasts
- Affordable Housing Need Number
- Sewer Allocation Forecasts

Anoka

Use the interactive mapping tool to explore Met Council's 2050 planning and policy layers:

[View Anoka Interactive map](#)



2050 Comprehensive Plan - Get Started

Maps

Resources

Submittal Status

Get started with these resources:

- [Regional Development Guide](#)
- [System Statement for Anoka](#)
- [Checklist of Minimum Requirements for Anoka](#)
- [How to Submit](#)

Sector Rep	Patrick Boylan
District	9
Council Member	Diego Morales

Forecasts and Community Designations

The Council updates its long-range [forecasts](#) at least once per decade. Forecasts indicate when, where and how much population, household and job growth the region and its communities can expect. Forecasts are used to help plan infrastructure needs and weave consistent growth expectations throughout your plan. These are your recent adopted forecasts.

Anoka is designated as **Urban Edge**.

Anoka Population, Households and Employment Forecasts

Forecast	2020	2030	2040	2050
Population	17,921	18,400	19,400	21,200
Households	7,578	7,900	8,500	9,300
Employment	13,415	14,500	15,500	15,700

data current as of 2/12/2025

[Download as CSV](#)

Ready-to-Go Maps

System Statements

Minimum Requirements Checklist

Checklist of Minimum Requirements

One of the most critical resources in the Handbook

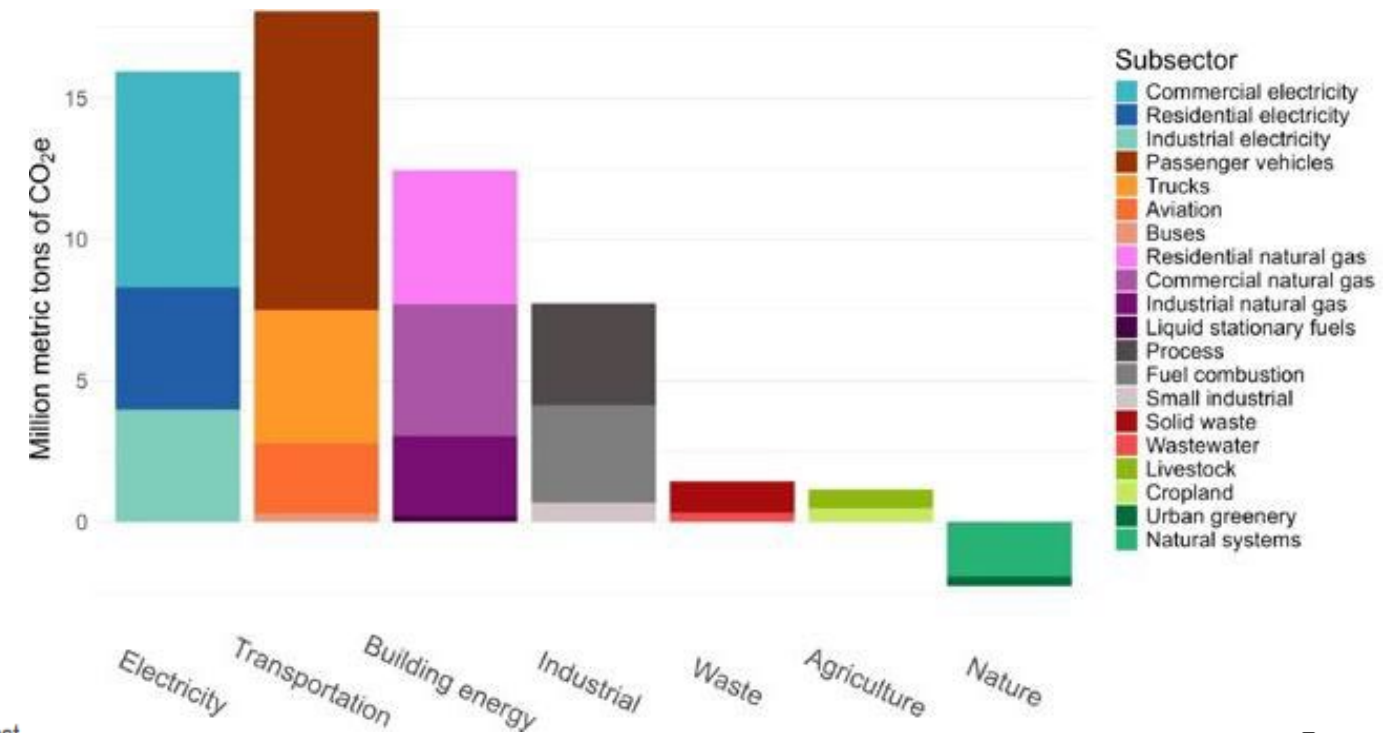
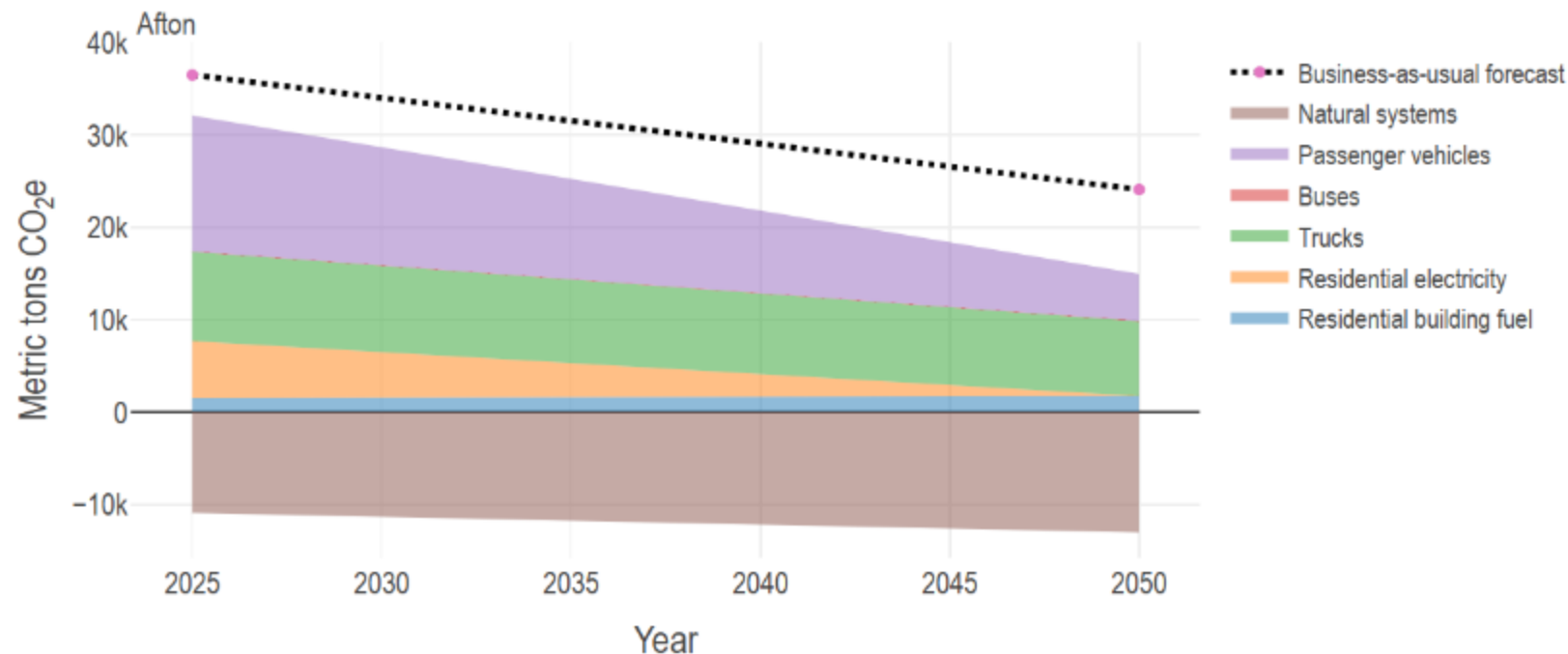
- The ***Minimum Requirements Checklist*** is a key resource in the Local Planning Handbook and must be clear and user-friendly.
- Each community (188 total) will receive a customized checklist
- Focus groups convened to:
 - Improve clarity and accessibility of requirements
 - Identify resource gaps



GHG Strategy Planning Tool

Meeting new climate requirements

- The tool will have a greenhouse gas (GHG) emissions inventory for each community
- It will also allow communities to project the emissions impacts of GHG reduction strategies



Climate Action Toolkit

Name of the Sector

Title of the Action

Meets ____ Requirements

Supports ____ Plan Elements

This will be a description of the action. Consider including if there are actions a city needs to take before implementing the profile action or if there are other climate actions that pair well with this action. Aim for this description section to be about 150 words.

Duis aute irure dolor in reprehenderit in voluptate velit esse cillum dolore eu fugiat nulla pariatur. Excepteur sint occaecat cupidatat non proident, sunt in culpa qui officia deserunt mollit anim id est laborum. Lorem ipsum dolor sit amet, consectetur adipiscing elit. Sed do eiusmod tempor incididunt ut labore et dolore magna aliqua. Ut enim ad minim veniam, quis nostrud exercitation ullamco laboris nisi ut aliquip.

Lorem ipsum dolor sit amet, consectetur adipiscing elit. Sed do eiusmod tempor incididunt ut labore et dolore magna aliqua. Ut enim ad minim veniam, quis nostrud exercitation ullamco laboris nisi ut aliquip ex ea commodo consequat.

Case Study or Local Regional Examples

This section can either include a single case study about one community in the region OR bullet points of three to five communities in the region who have completed this action with a sentence about their program/project. Aim for examples to be from the 7-County region as much as possible. If featuring a single community, consider highlighting key enabling actions, partnerships, or best practices. If featuring multiple communities, consider highlight different community types and what makes a community's approach to this action unique. In total, this section should be about 100-125 words.

Resources for Implementation

- This will be a resource for implementation. Lorem ipsum dolor sit amet, consectetur adipiscing elit.
- Sed do eiusmod tempor incididunt ut labore et dolore magna aliqua.
- Ut enim ad minim veniam, quis nostrud exercitation ullamco laboris nisi ut aliquip ex ea commodo consequat.
- Duis aute irure dolor in reprehenderit in voluptate velit esse cillum.

Action Impacts



Ease of Implementation



Potential Partners:

Community Designation



Environmental Justice/Community Considerations

This will pull community feedback on this actions and/or general themes from community engagement on climate action broadly. Lorem ipsum dolor sit amet, consectetur adipiscing elit. Sed do eiusmod tempor incididunt ut labore et dolore magna aliqua. Ut enim ad minim veniam, quis nostrud exercitation ullamco laboris nisi ut aliquip ex ea commodo consequat. Duis aute irure dolor in reprehenderit in voluptate velit esse cillum dolore eu fugiat nulla pariatur.

Profiling example climate actions

- Purpose: Provide a technical resource to assist local government partners in identifying climate actions for their comprehensive plans
- Toolkit of climate actions covering all required mitigation and adaptation sectors, detailing:
 - Action impact
 - Case studies or examples
 - Environmental justice considerations
 - Ease of implementation
 - Additional resources

Natural Systems Planning Tools

Providing a natural systems regional planning framework

A mapping tool will help cities meet their requirements by connecting data to planning concepts.

A story map will provide context for the mapping tool.

Natural systems strategies will be part of the climate action toolkit.

Select a City:

Select a City

Click a city on the map or choose from the dropdown.

Data Categories

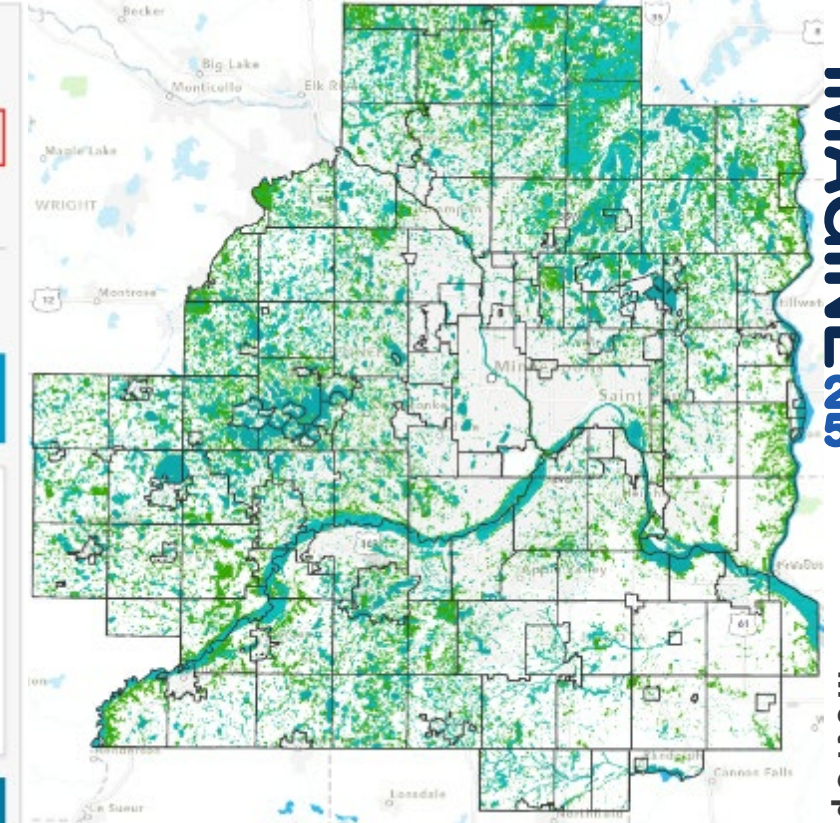
Getting Started	Existing Natural Systems	Significant and Sensitive Areas	Commonly Protected Areas	Opportunity Areas
-----------------	--------------------------	---------------------------------	--------------------------	-------------------

Existing Natural Systems are critical to inventory for the purposes of protecting and improving habitats. This layer contains data for terrestrial and aquatic systems.

Relevant Imagine 2050 Natural Systems Minimum Requirement: # 1

Identify existing natural systems in your community by mapping terrestrial areas and water bodies.

✓ Existing Natural Systems
Landcover MLCCS (Terrestrial)
Lakes & Rivers (Aquatic)
National Wetlands Inventory (Aquatic)



IMAGINE 2050

Metropolitan Council

Natural Systems Planning Tool Demo: [Natural-systems-mapping-tool-test](#)

Housing Toolkit



Assisting local governments identifying implementation strategies

- Purpose: Provide a technical resource to assist local government partners in identifying housing actions for their comprehensive plans
- Toolkit of housing policies, programs and fiscal devices connected to various local and regional housing needs, each tool will have:
 - Considerations for implementation
 - Local examples
 - Best Practices
 - Ease/barriers to implementation
 - Met Council funding availability (LCA and HUD PRO funding)
 - Additional resources

Planning Assistance Grants and the Small Communities Planning Program



2050 Planning Assistance Grant Program



Program Status Update

- Land Use Advisory Committee (LUAC) started review of 2050 eligibility criteria in January 2025. LUAC is currently working through:
 - eligibility criteria recommendations
 - considerations for award categories
 - funding scenarios for award amounts
 - overall budget considerations
 - options for incentive programs
- Focus on community population and net tax capacity per capita
- Priorities include:
 - serving as many communities as practical
 - providing similar or better levels of financial support as previous cycle
- Program is not intended to fund the full cost of statutory planning requirements but to supplement the local government's responsibilities.

Small Communities Planning Program



Program Status Update

- LUAC started review of proposed program in January 2025 and is currently working through:
 - eligibility criteria recommendations
 - funding and overall budget considerations
 - options for local cost-sharing
- Focus on net tax capacity per capita and community population
- Priorities include:
 - serving as many communities as practical
 - reducing burden of comprehensive plan updates for the communities with the least capacity to manage them
- Estimated capacity to assist approximately 30 communities with their comprehensive plan updates to meet planning minimum requirements, including planning services and targeted engineering service needs.

Plant Program Update





2026 – 2028 PlanIt Program: Comprehensive planning technical assistance

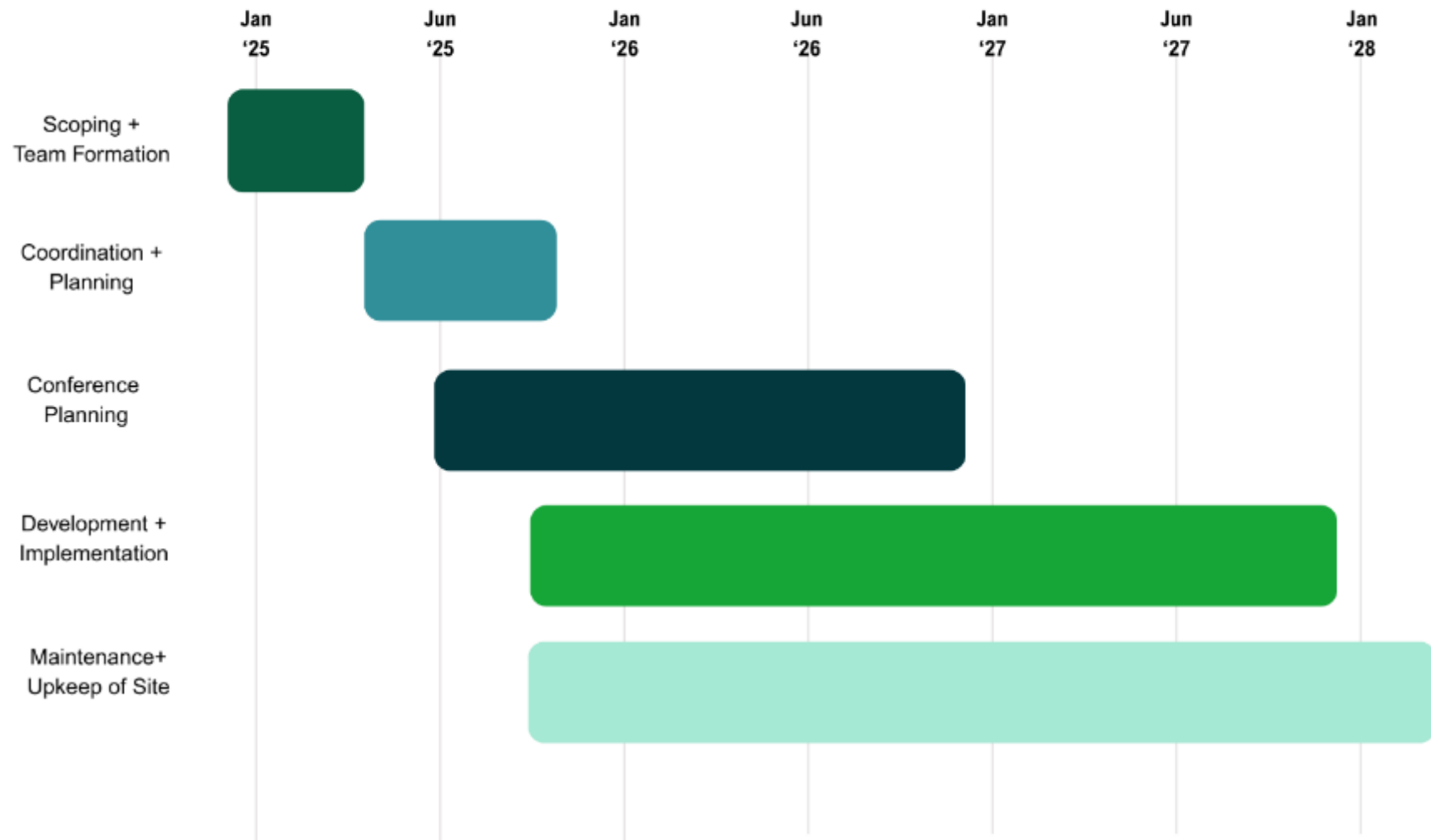
- Webinars
- Workshops
- Conference
- Tutorials/Demos
- News blasts



PlanIt Program Updates

Planning Kickoff

- Objectives of PlanIt
 - Create new content
 - Improve branding
 - Improve user experience
- Five Phases (see graphic)
- New PlanIt Leads



Thank you

Angela R. Torres, AICP

Senior Manager, Local Planning Assistance

angela.torres@metc.state.mn.us

(651) 602-1566

Emma Dvorak

Senior Planner, Local Planning Assistance

emma.dvorak@metc.state.mn.us

(651) 602-1399

