

2025 Comprehensive Economic Development Strategy Update

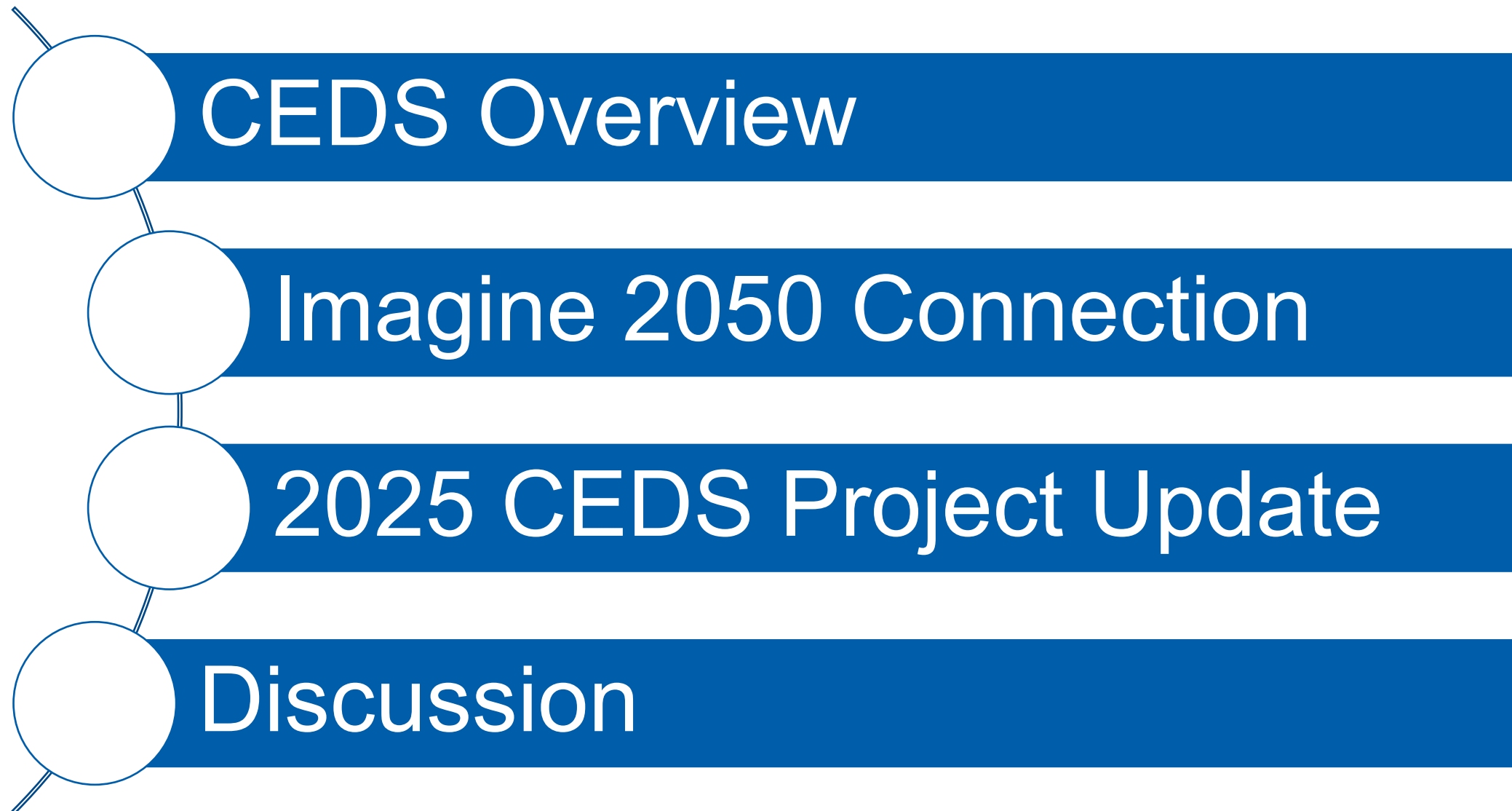


Merritt Clapp-Smith, Senior Planner

Land Use Advisory Committee

July 17, 2025

Overview



Comprehensive Economic Development Strategy



What is a Comprehensive Economic Development Strategy (CEDS)?



Document to inform the 7-county region's economic development efforts



Required to be eligible for federal EDA grants

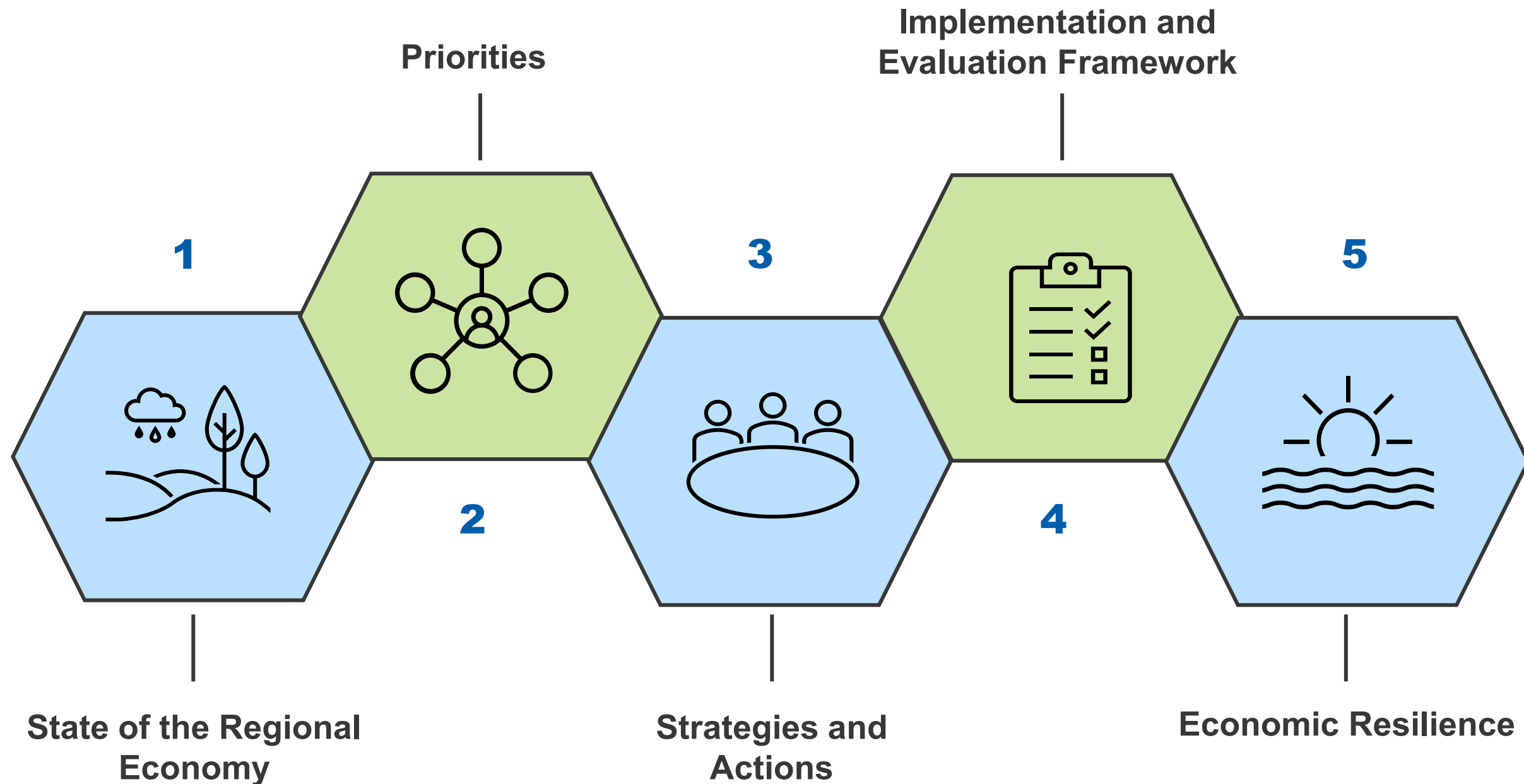


Collective vision for the region's economic future



A broad scan of regional economic development initiatives

CEDS Structure



2020 CEDS: Regional Economic Framework

REGIONAL ECONOMIC FRAMEWORK



GREATER MSP
Minneapolis Saint Paul Regional Economic Development Partnership



2020 Regional Economic Framework

REGIONAL ECONOMIC FRAMEWORK



Overview

- Developed collaboratively by Met Council, Greater MSP and Center for Economic Inclusion, with partial support from the McKnight Foundation.
- Adopted by the Council in August 2020.
- Serves as the region's current Comprehensive Economic Development Strategy.



GREATER MSP
Minneapolis Saint Paul Regional Economic Development Partnership



Imagine 2050



Part of Our Regional Goals



Our region is equitable and inclusive

Racial inequities and injustices experienced by historically marginalized communities have been eliminated; and all people feel welcome, included, and empowered.



Our communities are healthy and safe

All our region's residents live healthy and rewarding lives with a sense of dignity and wellbeing.



Our region is dynamic and resilient

Our region meets the opportunities and challenges faced by our communities and economy including issues of choice, access, and affordability.



We lead on addressing climate change

We have mitigated greenhouse gas emissions and have adapted to ensure our communities and systems are resilient to climate impacts.



We protect and restore natural systems

We protect, integrate, and restore natural systems to protect habitat and ensure a high quality of life for the people of our region.



Imagine 2050 Connection



- Provides context on the economic factors influencing the Council's policy development.
- Includes a regional economic overview informed by a SWOT* analysis.
- Highlights priorities directly relevant to the Council's work.

*Strengths, Weaknesses, Opportunities and Threats

2025 Comprehensive Economic Development Strategy



2025 CEDS: A Collaborative Approach



CEDS Committee



Expert Interviews



Public Hearing

CEDS Committee



SET UP A REGIONAL TABLE FOR A
WIDE RANGE OF STAKEHOLDERS



INFORM THE FUTURE DIRECTION
OF ECONOMIC DEVELOPMENT



PROVIDE A VENUE FOR
COLLABORATIVE ALIGNMENT OF
STRATEGIES

Meeting materials are published at <https://metro council.org/Planning/Comprehensive-Economic-Development-Strategy.aspx>

Participating Organizations

Center for Economic Inclusion

City of Bloomington

City of Minneapolis

City of Saint Paul

Dakota County

DEED

Great Plains Institute

Great River Energy

Greater MSP

HealthPartners

Hennepin County

Jones Lang LaSalle Incorporated (JLL)

Medical Alley

Metro Economic Development Association

Minneapolis Downtown Council

Minnesota Business Coalition for Racial Equity

Minnesota Freight Advisory Committee

MN CDFI Coalition

MN Technology Assoc

Project for Pride in Living

Ramsey County

Saint Paul Chamber

Saint Paul Port Authority

Scott County

TC LISC

University of Minnesota

Expert Interviews on Strategic Priorities

Regional Brand
& Image

Racial Inclusion

Workforce &
Skills

Job Growth

Talent Migration
& Retention

Startups &
Innovation

New Climate
Economy

Transportation
& Mobility

Affordability

The strategic priorities are adapted from the Greater MSP Partnership, which developed these themes over the past decade. Greater MSP continues to implement and refine these regional strategies today.

Mentimeter Survey QR Code



Mentimeter Question 1

Join at menti.com | Use vote code 9714 5816

 Mentimeter

Are these priorities still important? How important?

Regional Brand and Image

Workforce and Skills

Racial Inclusion

Talent Migration and Retention

Job Growth

Not Important

Very Important

Mentimeter Question 2

Join at menti.com | Use vote code **9714 5816**



Are these priorities still important? How important?

Startups and Innovation

New Climate Economy

Transportation and Mobility

Affordability

Not Important

Very Important



Mentimeter Question 3

Join at menti.com | Use vote code **9714 5816**

 Mentimeter

What are the strengths of your local economy?

Mentimeter Question 4

Join at menti.com | Use vote code **9714 5816**

 Mentimeter

What are the weaknesses of your local economy?

Public Hearing



Timeline





Merritt Clapp-Smith

Senior Planner

Local Planning Assistance

Community Development

merritt.clapp-smith@metc.state.mn.us

