

Regional Administration

Preliminary Recommended 2015 Unified Budget

Management Committee - July 23, 2014



Timeline for Budget Development

Jul-Aug	Committee - Division Level Budget Presentations
Jul 23	Council - Adopt Wastewater Rates
Aug 13	Council - Division Level Budget Presentation
Aug 27	Council - Adopt Preliminary Budget & Levies
Oct	Council - Adopt Public Comment Drafts
Dec 10	Council - Adopt Final Budget & Levies

Regional Administration Connections to Thrive 2040

- **Support the Council & Divisions**
- **Stewardship**
- **Leading Initiatives**
 - ❑ Building partnerships
 - ❑ Building equity
 - ❑ Enhancing infrastructure
 - ❑ Expanding transparency
 - ❑ Plain language

Stewardship

Prosperity

Equity

Livability

Sustainability

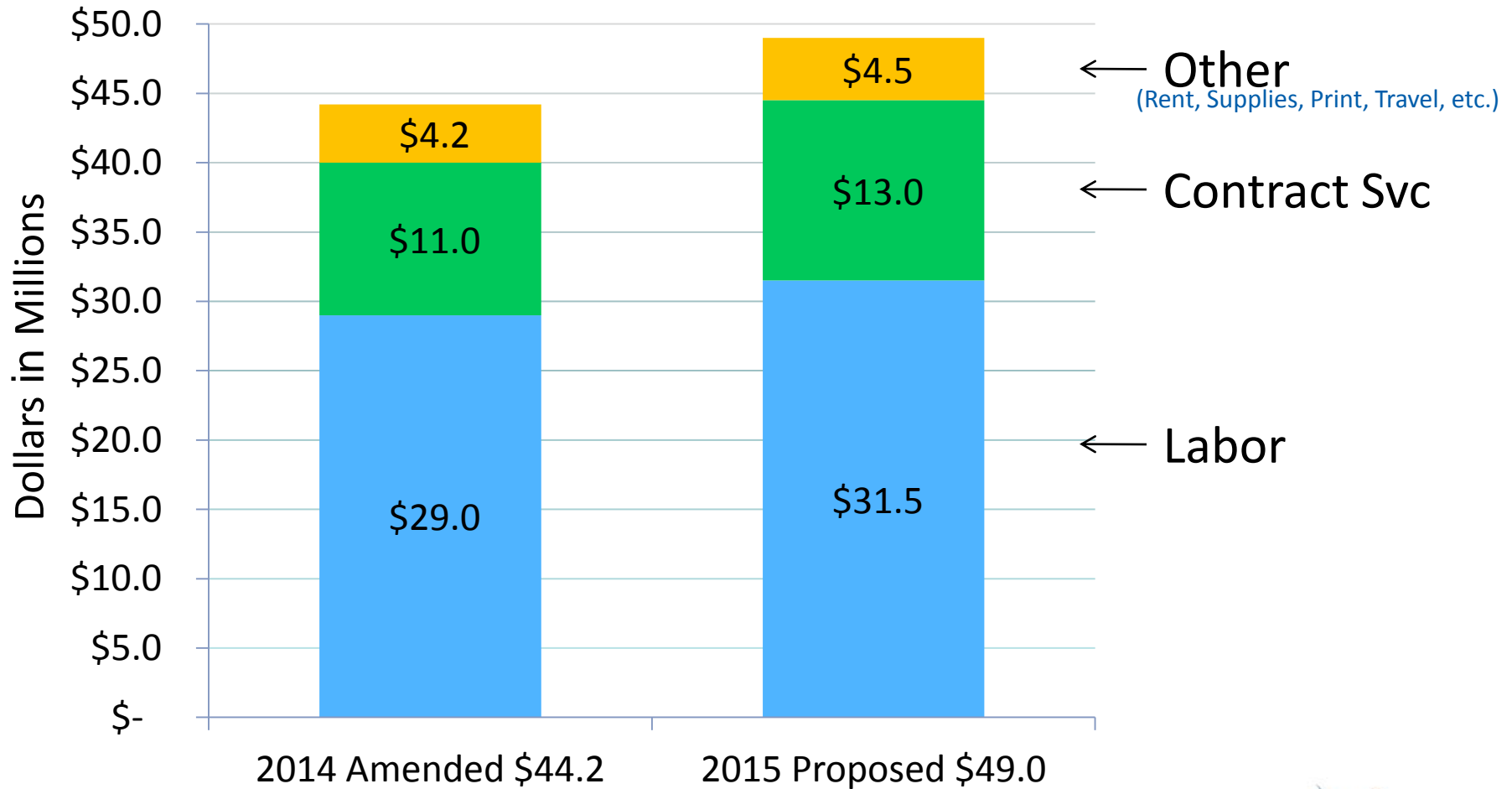
Integration

Collaboration

Accountability

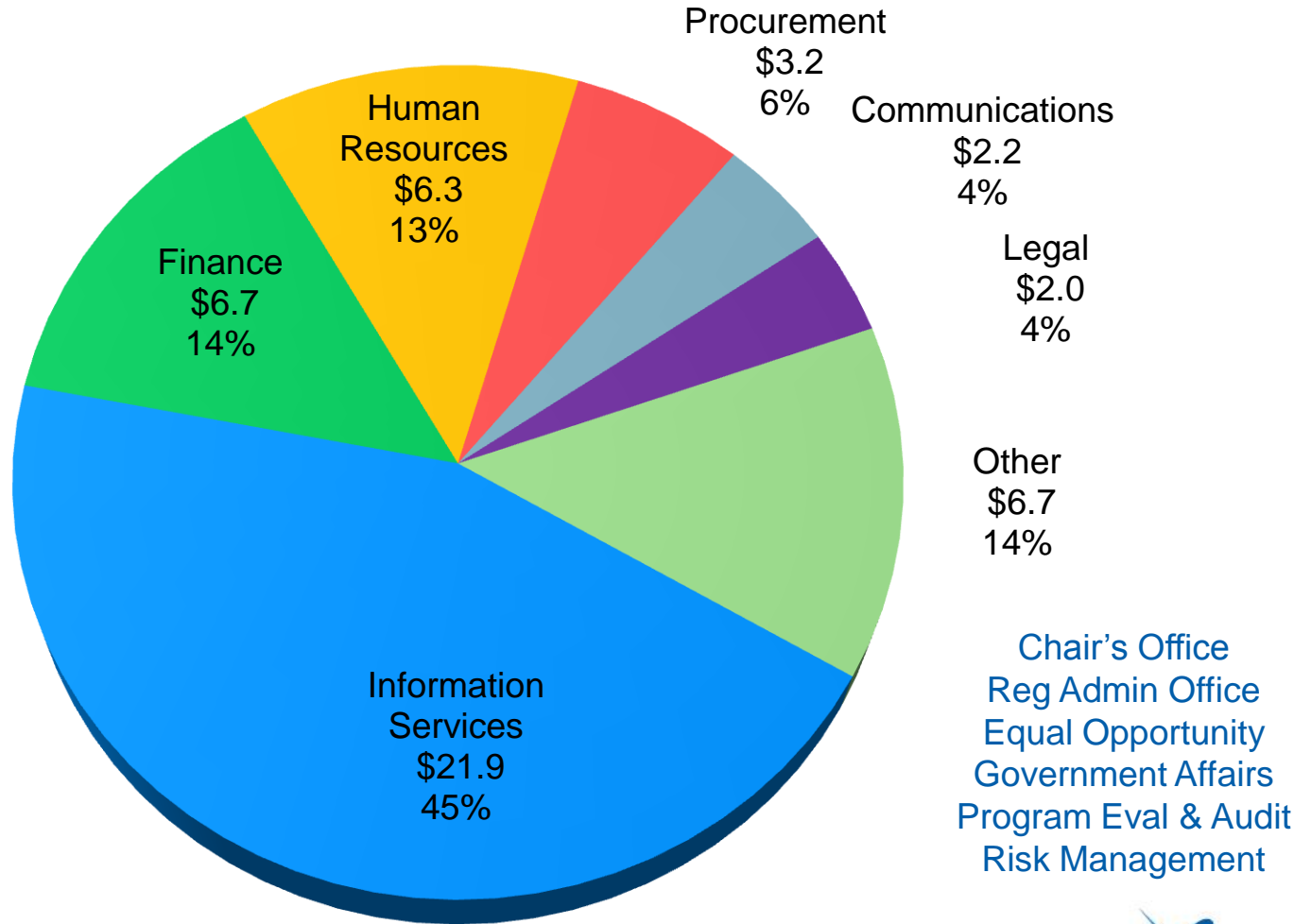


RA - Operating Budget Comparison



2015 Regional Administration Budget - \$49 M

Uses By Department



Total Budget Change - \$4.8 Million

- **\$2.5 M Labor**
 - \$1.5 M Staff Additions
 - \$1.0 M Labor Agreements
- **\$2.0 M Contractual Services**
 - \$1.0 M Equity Demonstration Projects
 - \$0.8 M Maintenance Agreements
 - \$0.2 M Labor arbitration, LOD Consultants, EAP services & Benefits seminars.
- **\$0.3 M Other**

Stewardship

Prosperity

Equity

Livability

Sustainability

Integration

Collaboration

Accountability



14 FTE Additions 2014/15

- Reviewed by General Manager(s)
- Equity: OEO – Compliance (2)
- Expanding Technology Transparency
 - Enterprise Content Management (ECM)
 - Human Resources
 - Office of Equal Opportunity
 - Information Systems (2)
 - Transit Capital Allocation
- Meet Growing Division Needs
 - Procurement (2)
 - Labor Relations
 - Health Promotion
 - Telecom Support (2)

Stewardship

Prosperity

Equity

Livability

Sustainability

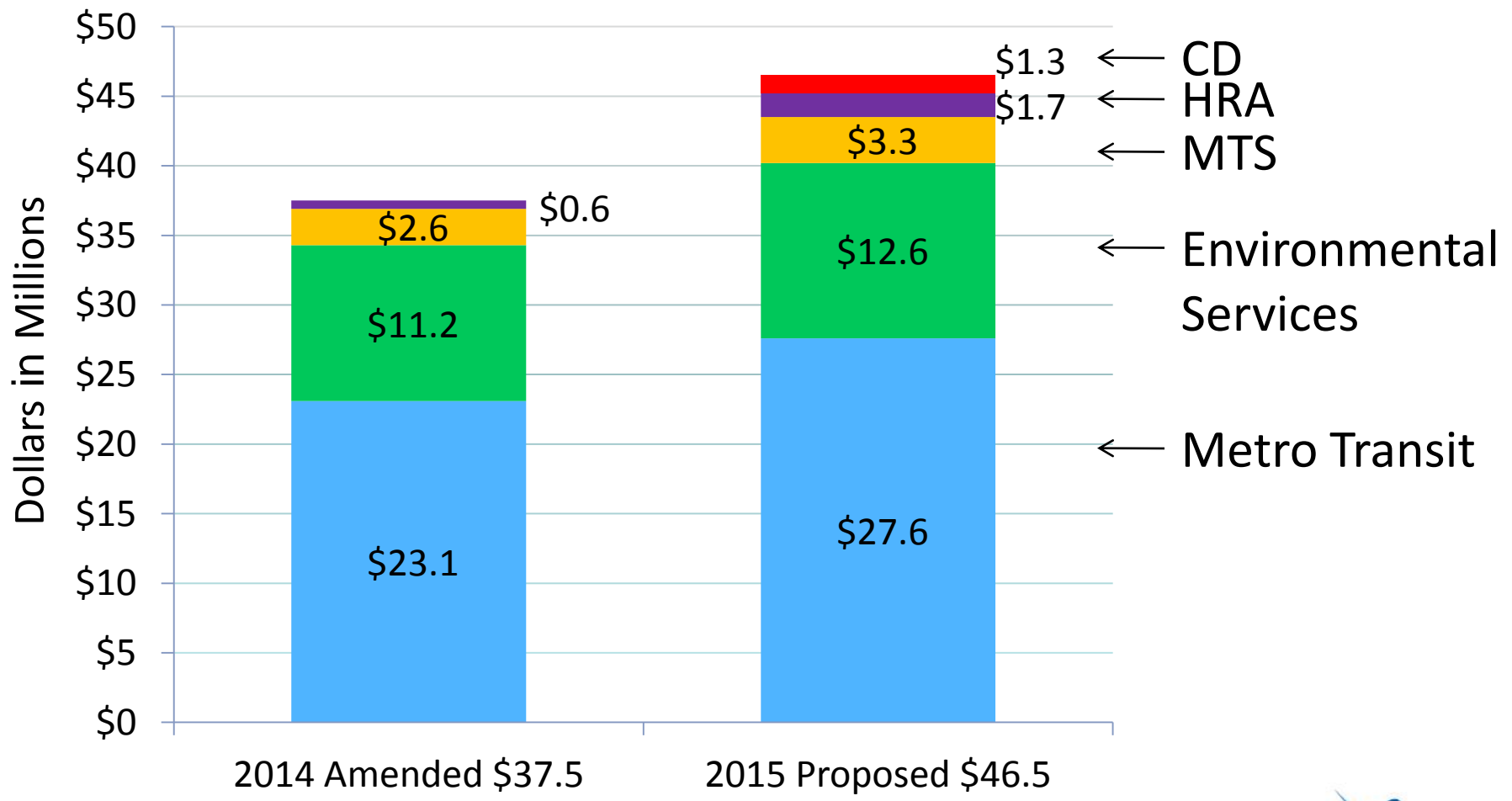
Integration

Collaboration

Accountability



Preliminary Budget – Allocations



Total Unallocated - \$2.5 Million

- \$49.0 M Total Budget
- (46.5) M Allocated to Divisions
- \$ 2.5 M Unallocated

- 1.0 M Equity Demonstration Initiatives
- 0.7 M Workforce Initiatives
- 0.8 M Other
 - Treasury
 - Water Supply Planning

Stewardship

Prosperity

Equity

Livability

Sustainability

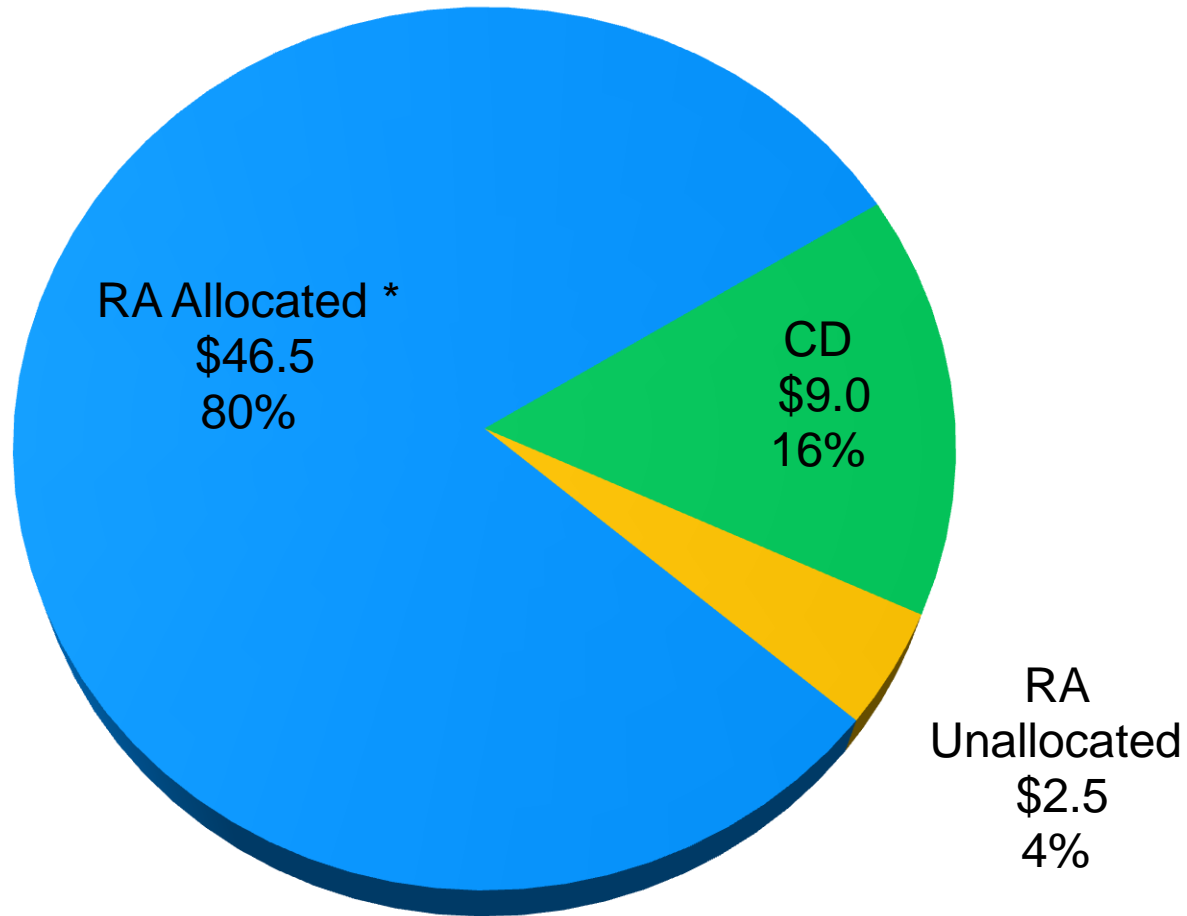
Integration

Collaboration

Accountability



2015 General Fund Summary - \$58 M



* \$1.65 M is allocated to CD

Recommended Levies + 0.5%

	2014	2015	Limit	
<u>Non-Debt Service Levies</u>				
General Purposes	\$ 14.261	\$ 14.451	\$ 14.451	
Highway Right of Way	-	-	3.884	
Livable Communities:				
- Demonstration Acct	11.194	11.342	11.342	
- Tax Base Revitalization	5.000	5.000	5.000	
Total Non-Debt Levies	\$ 30.455	\$ 30.793	\$ 34.677	88.8%
<u>Debt Service Levies</u>				
Parks	\$ 6.156	\$ 6.400		
Transit	43.430	43.238		
Total Debt Levies	\$ 49.586	\$ 49.638		
Total All Levies	\$ 80.041	\$ 80.431		
	2.0%	0.5%		

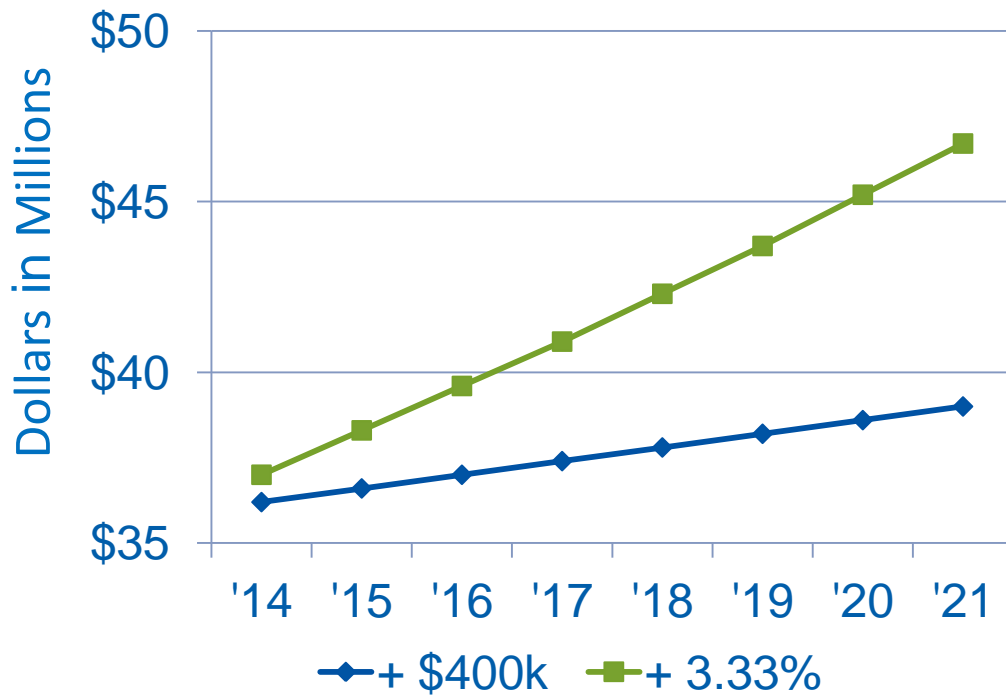
*

Dollars in millions



Impact of Change in Transit Bonding On Future Levy Pressure

Bonding Authority

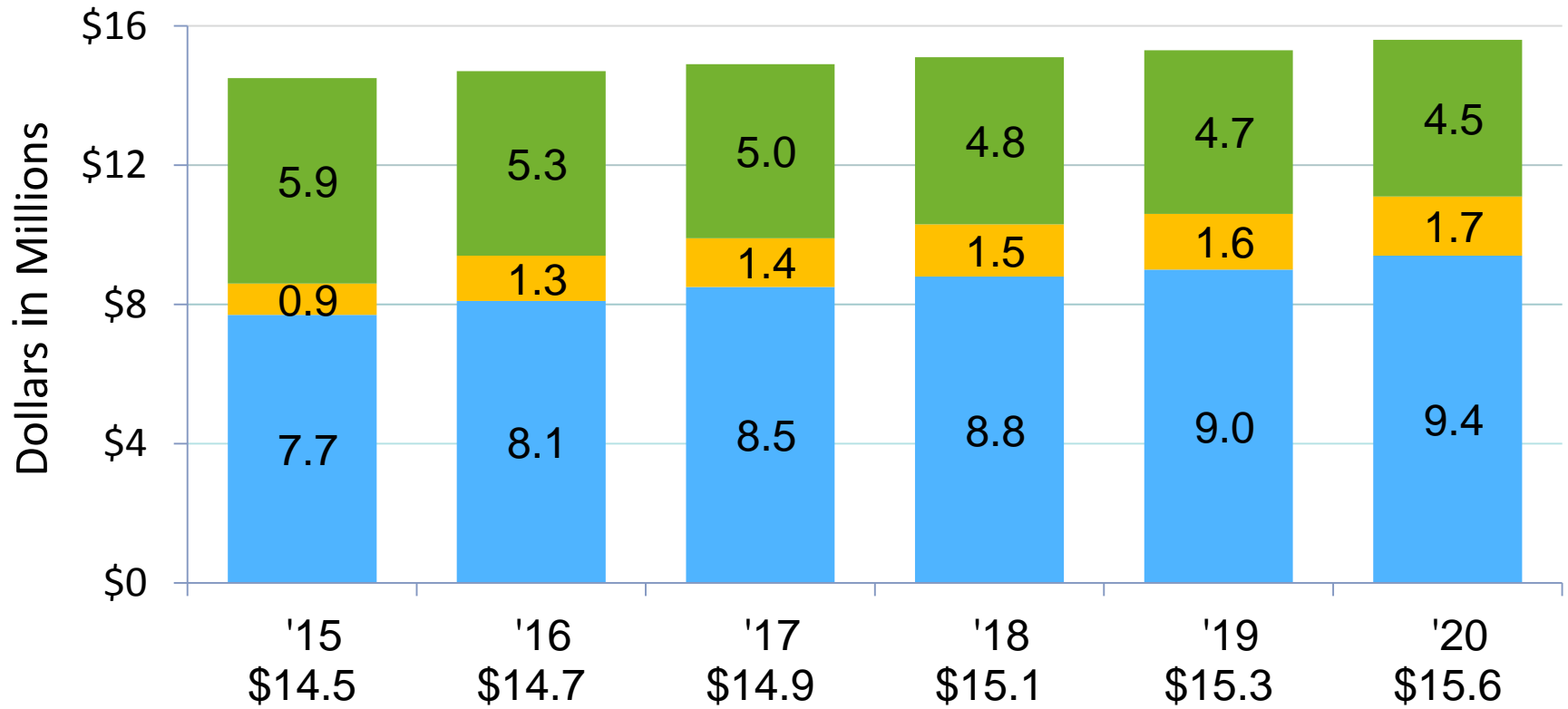


Levy Impact % of Total Levies

1.8%

0.5%

Pressures on the General Purposes Levy



Maximum General Purposes Levies

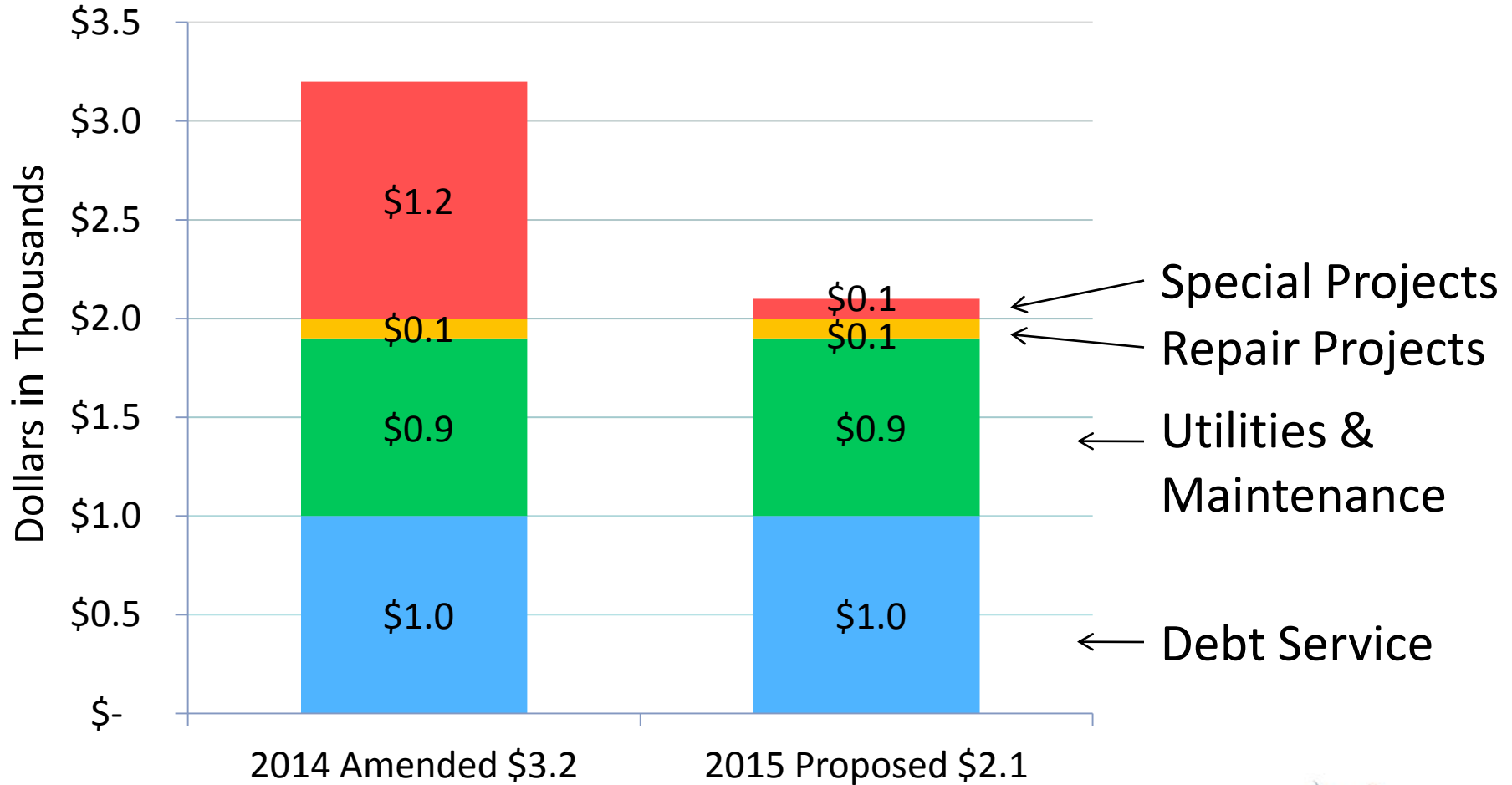
■ Base ■ '15 Ongoing ■ One-Time

General Fund Operating Reserves

Available Fund Balance 12/31/13	\$12.3
2014 Adopted Budget & Amendments	(2.0)
Projected Available Balance 12/31/14	\$10.3
RA - Workforce recruitment and Robert St façade design	(0.9)
Projected Available Balance 12/31/15	\$ 9.4
2015 General Fund Target	\$ 5.6

Dollars in millions

Facility - Operating Budget Comparison



Building Fund Reserve

Available Fund Balance 12/31/13	\$ 1.7
2014 Adopted Budget & Amendments	<u>(1.0)</u>
Projected Available Balance 12/31/14	\$ 0.7
2015 Adopted Budget & Amendments	<u> -</u>
Projected Available Balance 12/31/15	\$ 0.7

Dollars in millions

Timeline for Budget Development

Jul-Aug	Committee - Division Level Budget Presentations
Jul 23	Council - Adopt Wastewater Rates
Aug 13	Council - Division Level Budget Presentation
Aug 27	Council - Adopt Preliminary Budget & Levies
Oct	Council - Adopt Public Comment Drafts
Dec 10	Council - Adopt Final Budget & Levies