

Management Committee Financial Report 3rd Quarter, 2016

Management Committee
November 9, 2016

Operating Reserves

	Projected Available YE Reserve		Minimum Target	Target %
General Fund	\$12,163		\$ 6,242	10%
HRA	9,686		5,076	8.3%
Environmental Services	21,490		13,407	10%
<u>Metro Transit</u>				
Bus	35,369		26,187	8.3-12.5%
Light Rail	16,170		5,868	
Commuter Rail	4,985		1,544	
<u>MTS</u>				
Trans Planning	4,618		2,515	31.5%
Metro Mobility	9,647		6,261	10%
Contracted Svcs.	1,700		2,756	10%

\$ in thousands

General Fund Operating

	2016 YTD Results	% Budget	Projected Year-End	2016 Budget
Revenues	\$ 8,002	53%	15,202	14,980
Expenses	42,539	68%	61,528	62,416
Transfers	31,053	72%	43,947	43,202
Change	(3,484)		(2,379)	(4,234)
Beg Balance			19,153	
Assigned/Committed Balance			(4,611)	
Ending Reserve Balance			\$ 12,163	
Target			\$ 6,242	

\$ in thousands



General Fund Operating

Assigned/Committed Balances	Projected Year End
Risk: Self Insure (Errors and Omissions)	\$1,500
Compensated Absences (Accrued Leave)	2,480
Regional Water Supply Program	631
	<hr/> \$4,611

Environmental Services Operating

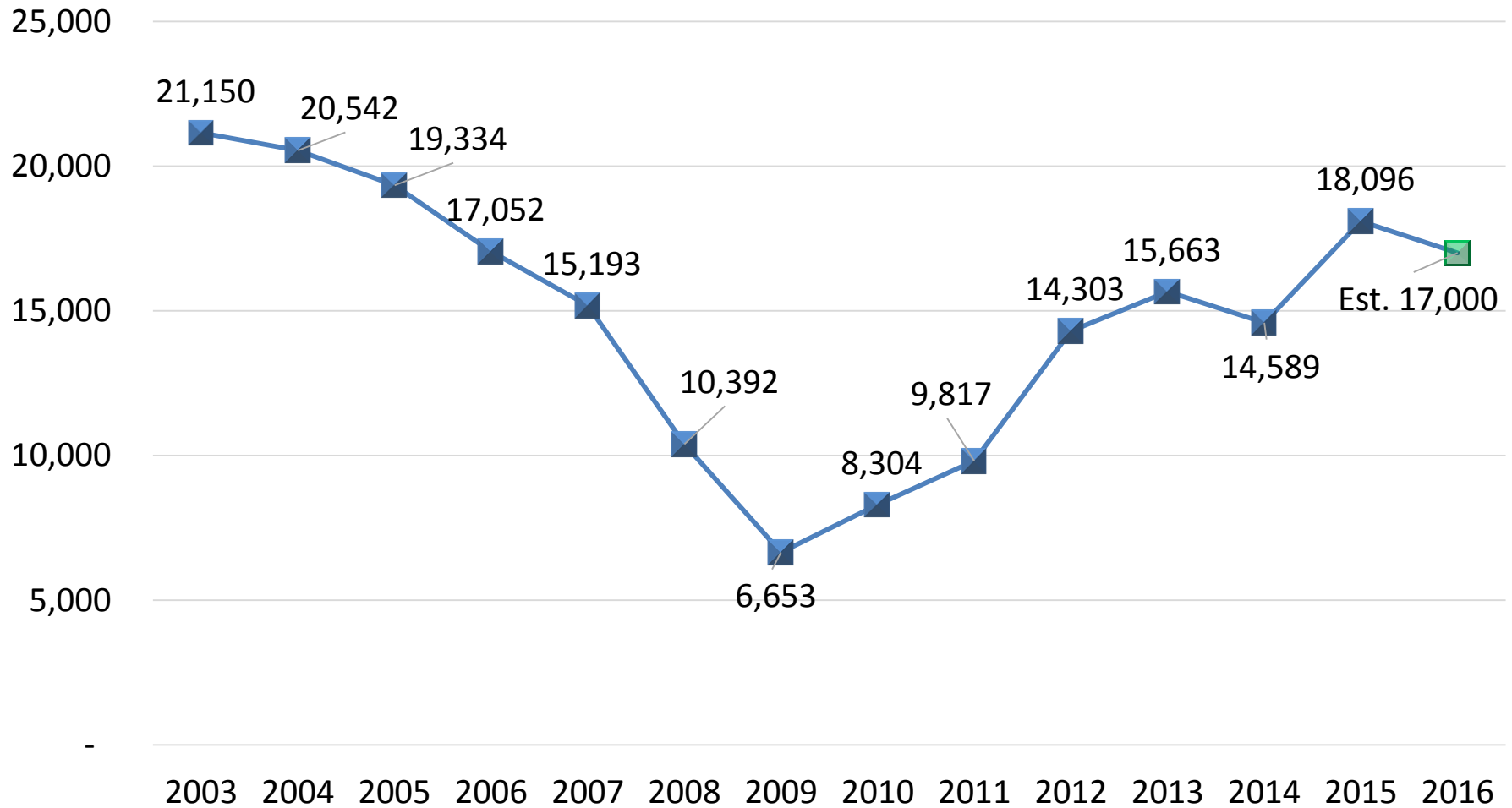
	2016 YTD Results	% Budget	Projected Year-End	2016 Budget
Revenues	\$ 160,860	71%	224,626	225,485
Expenses	80,086	60%	127,614	134,074
Transfers	(68,640)	74%	(92,652)	(92,210)
Change	12,134		4,360	(799)
Beg Balance			20,130	
Ending Reserve Balance			\$ 24,490*	
Target			\$ 13,407	

- \$3M of reserve balance is for water supply planning

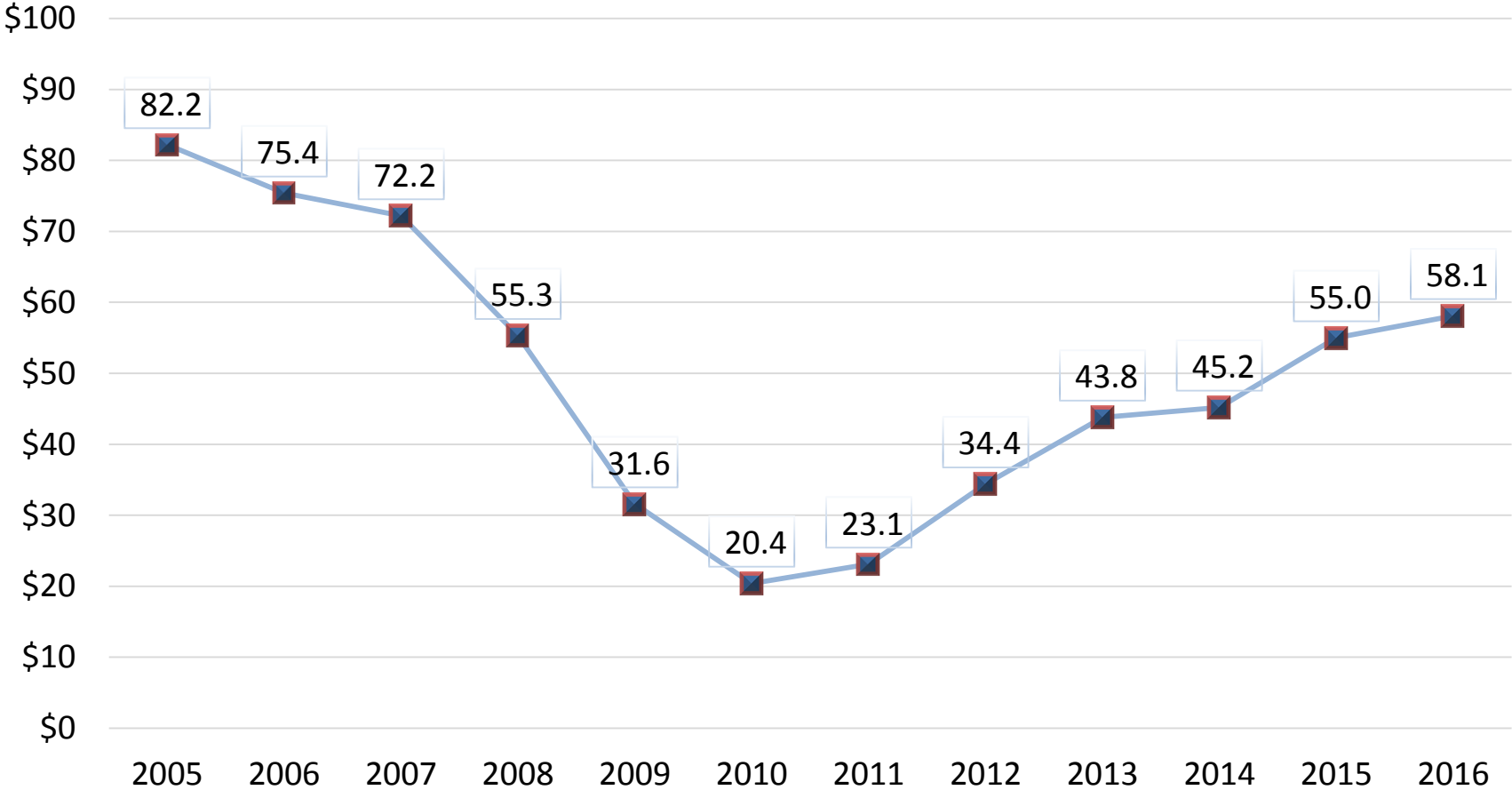


\$ in thousands

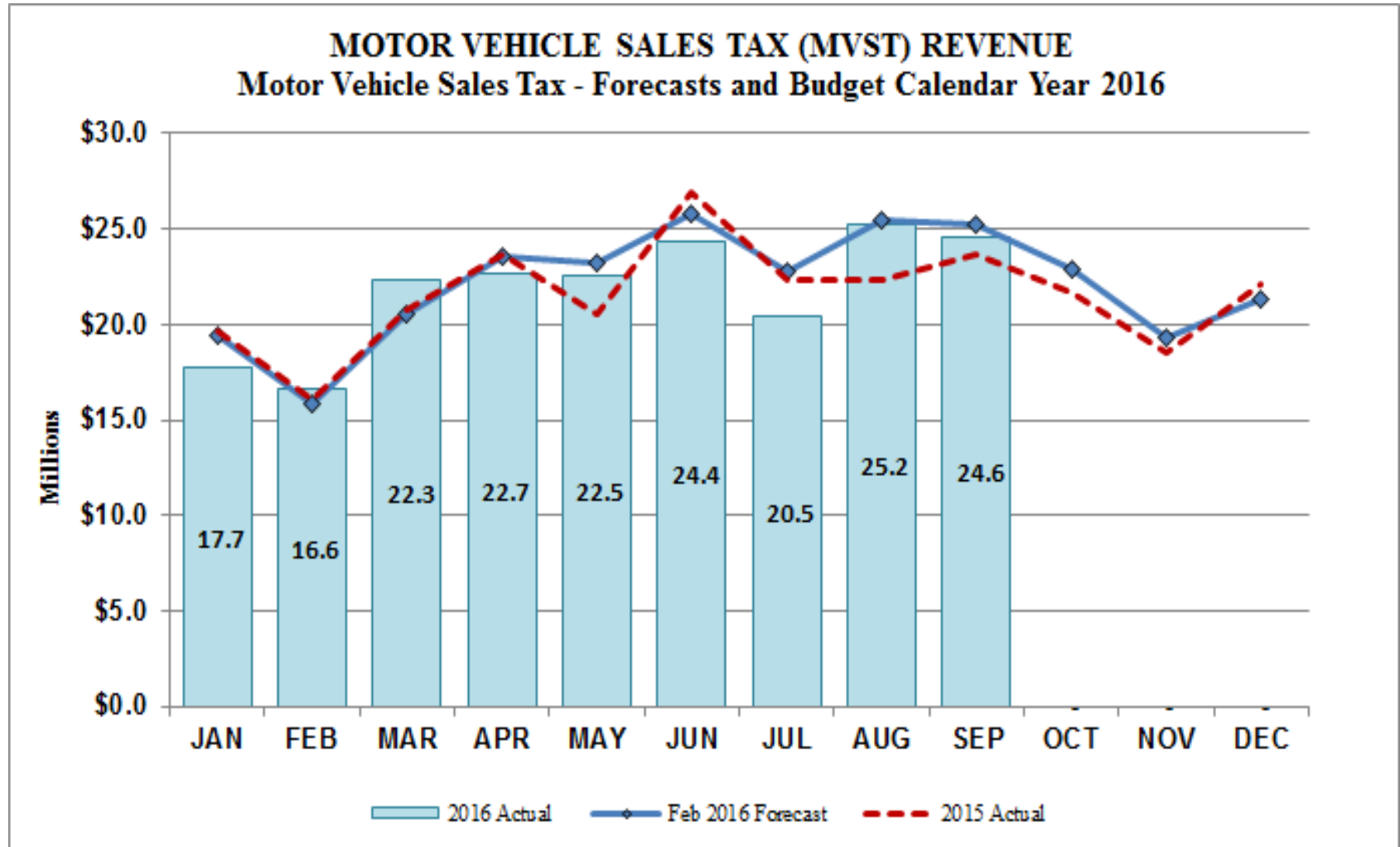
SAC Units Recovery



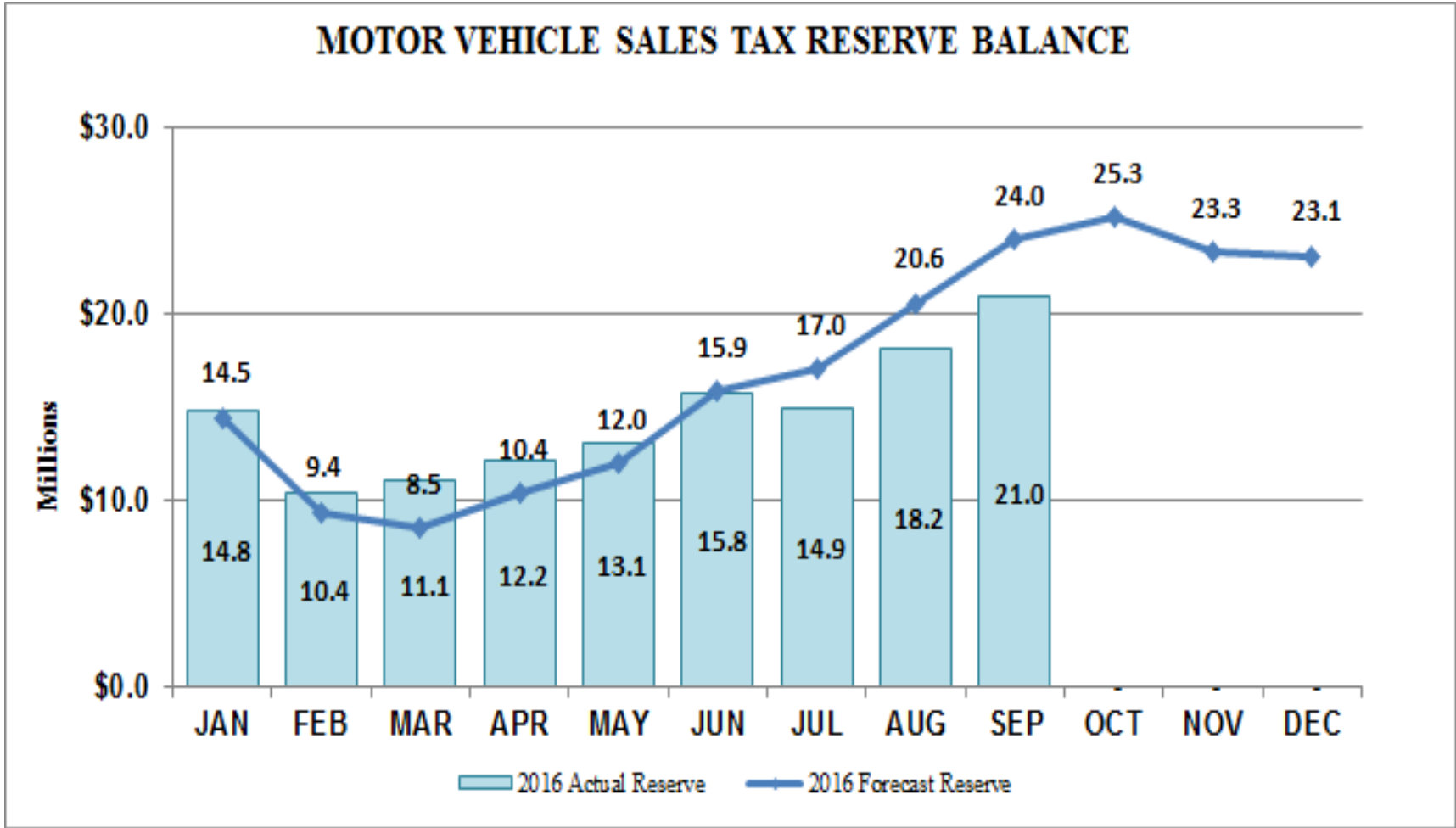
SAC Reserve Balance



Motor Vehicle Sales Tax Revenues



Motor Vehicle Sales Tax Reserve Balance



Metro Transit Bus Operations

	2016 YTD Results	% Budget	Projected Year-End	2016 Budget
Revenues	\$ 218,543	75%	291,992	293,174
Expenses	219,775	72%	296,326	306,500
Transfers	(6,255)	83%	(8,696)	(7,501)
Change	(7,487)		(13,030)	(20,827)
Beg Balance			48,399	
Ending Reserve Balance			\$ 35,369	
Target (minimum)			\$ 26,187	

\$ in thousands



Metro Transit LRT Operations

	2016 YTD Results	% Budget	Projected Year-End	2016 Budget
Revenues	\$ 54,168	77%	72,664	70,699
Expenses	42,213	72%	57,345	58,793
Transfers	(8,388)	70%	(12,633)	(11,905)
Change	3,567		2,686	1
Beg Balance			13,484	
Ending Reserve Balance			\$ 16,170	
Target			\$ 5,868	

\$ in thousands



Metro Transit Commuter Rail

	2016 YTD Results	% Budget	Projected Year-End	2016 Budget
Revenues	\$ 14,135	76%	18,765	18,604
Expenses	11,200	65%	16,903	17,358
Transfers	(827)	66%	(1,203)	(1,246)
Change	2,108		659	0
Beg Balance			4,326	
Ending Reserve Balance			\$ 4,985	
Target			\$ 1,544	

\$ in thousands

