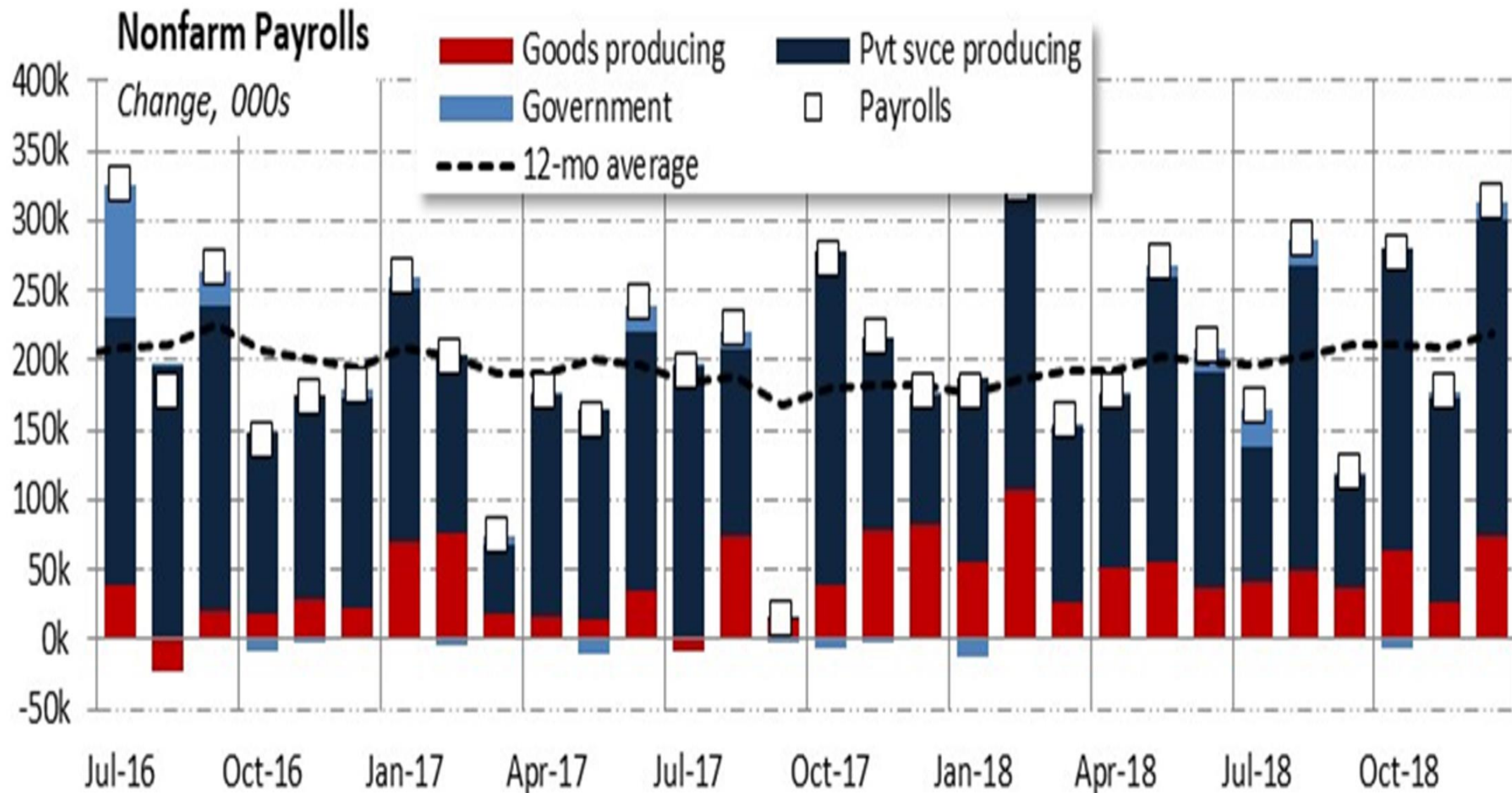


4Q18 Investment Results for the Management Committee

2-27-19

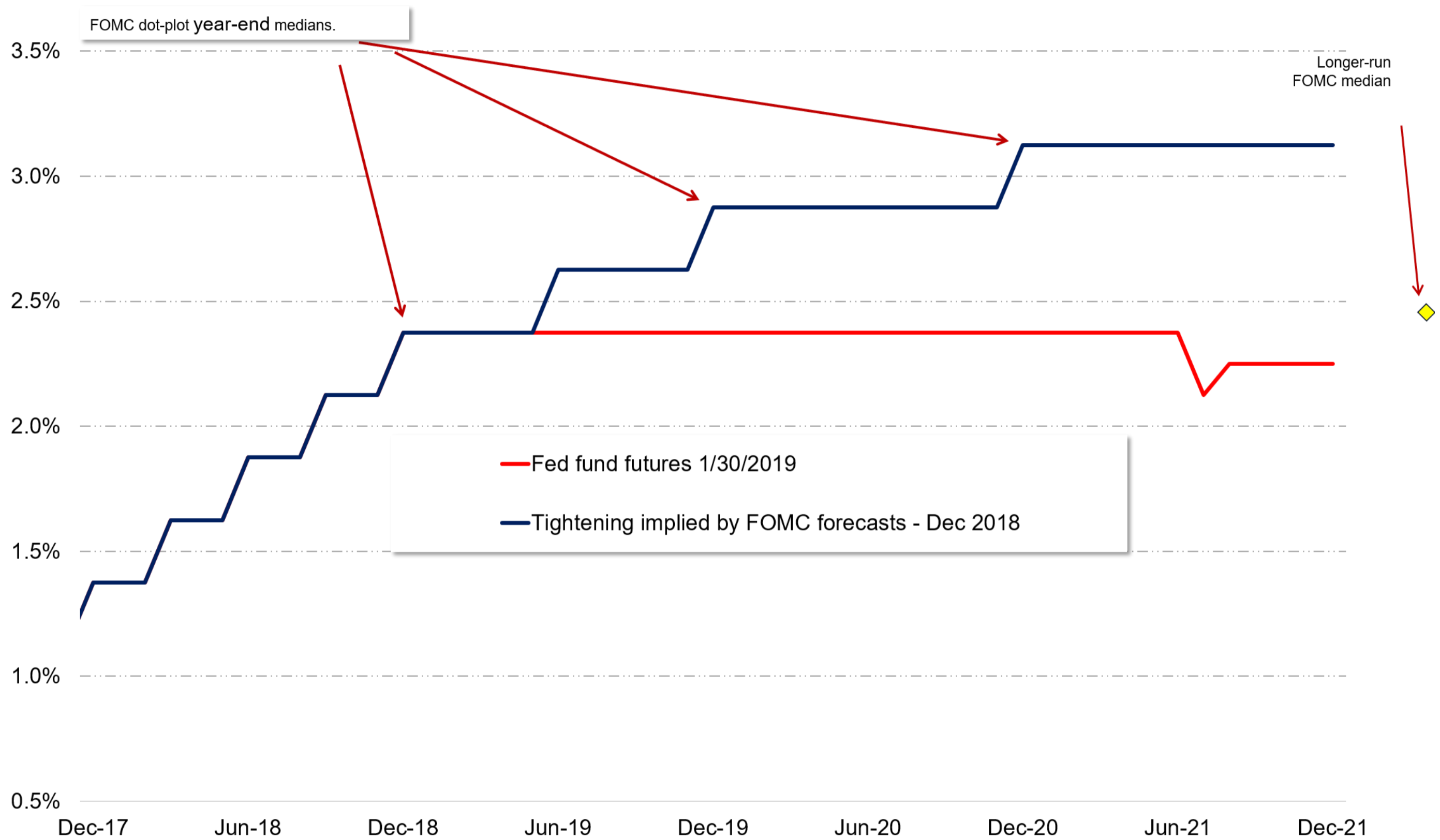
US Nonfarm Payrolls



Source: Bureau of Labor Statistics and FTN Financial

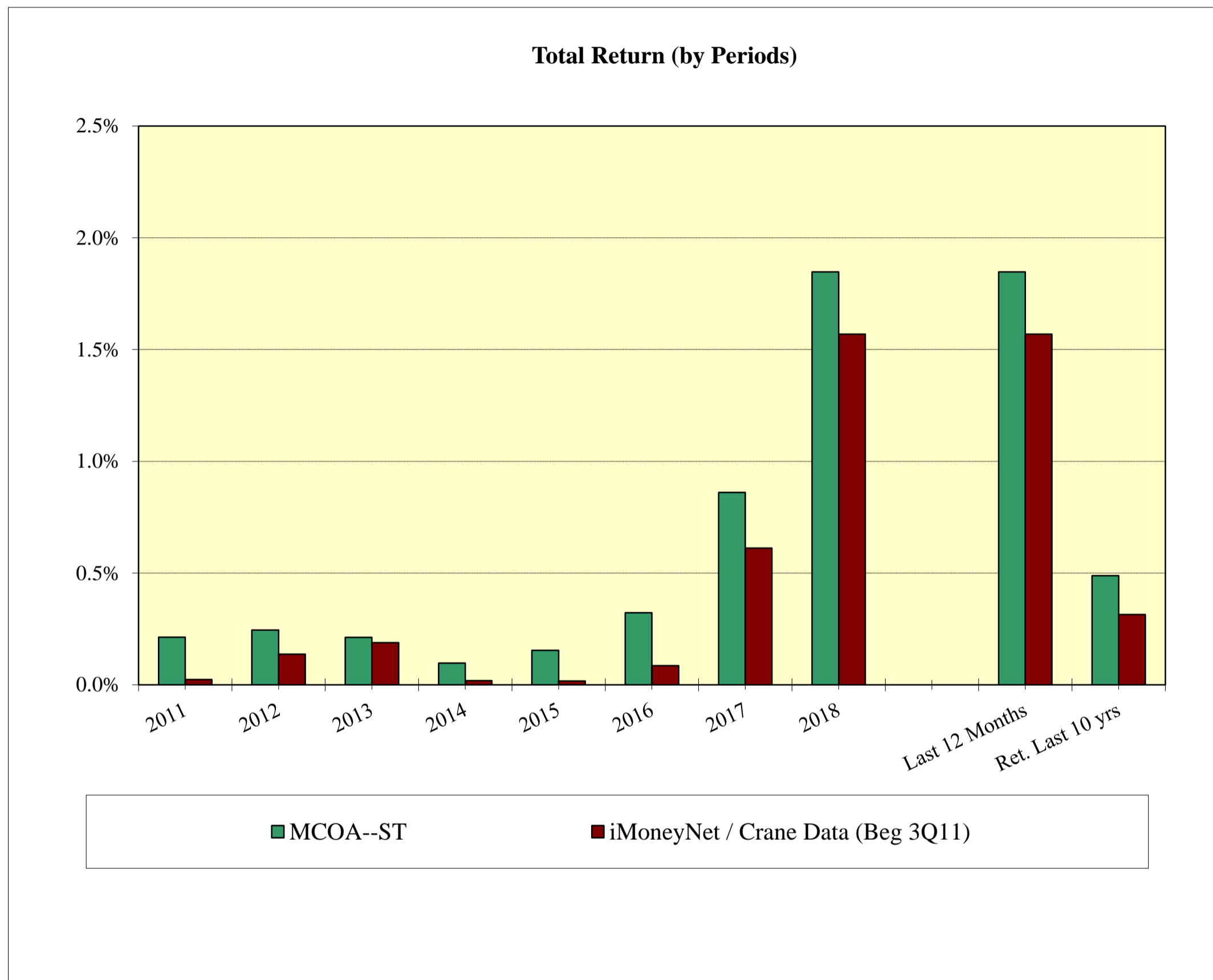
Source: Bureau of Labor Statistics and FTN Financial

Fed Fund Futures



Source: Federal Reserve & FTN Financial

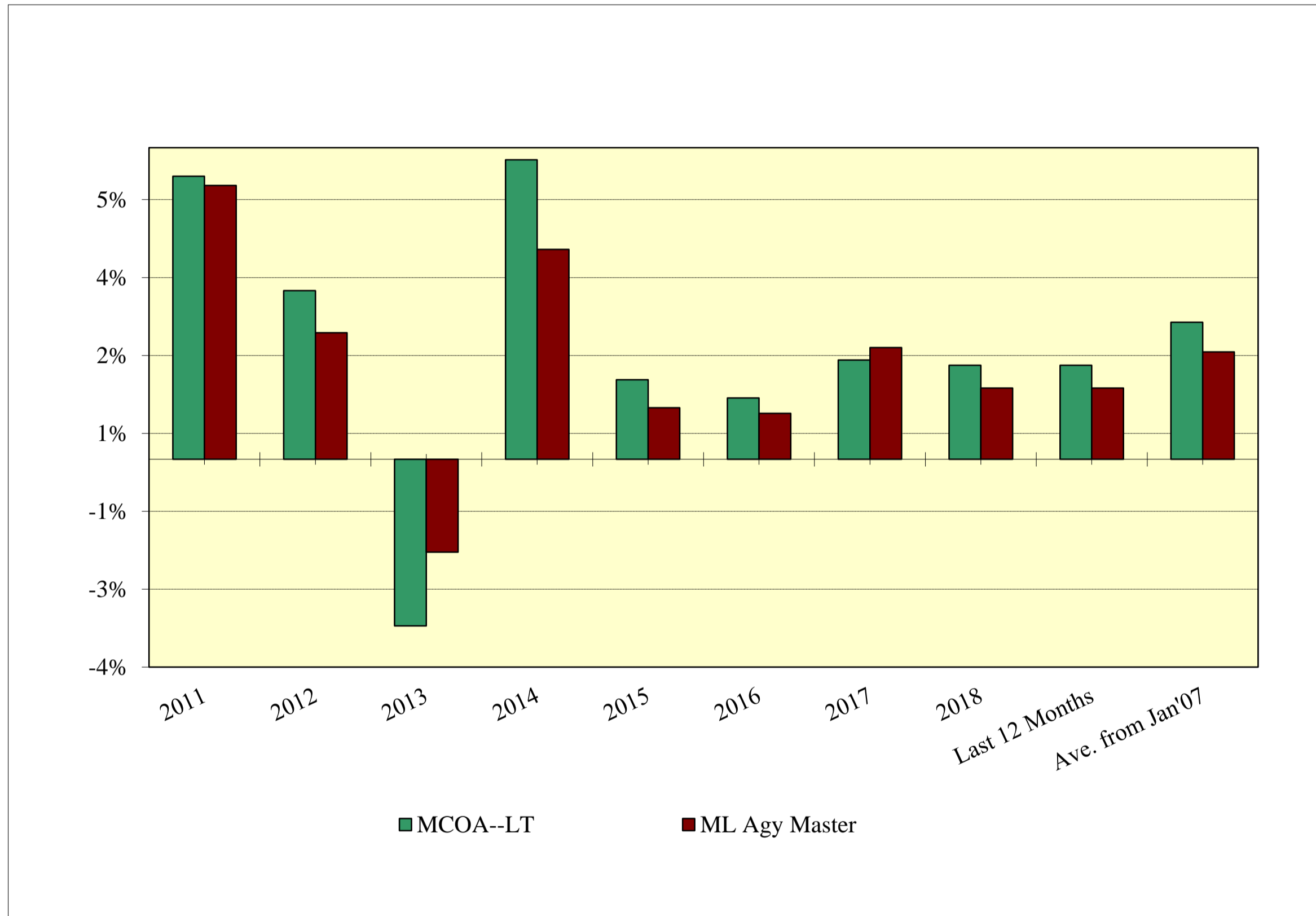
Total Return, ST Portfolio



- +5 bps (above) Index in 4Q18
- +17 bps/year ave. over the last 10 years

Source: Metropolitan Council, Bloomberg

Total Return, LT Portfolio



- 36 bps (below) Index in 4Q18
- +57 bps/year ave. over the last 10 years

Source: Metropolitan Council, Bloomberg

Investment Plans for Long-term Portfolio

- Use cash balances to maintain effective duration within a range of 2 - 6.
- Cash can be utilized to purchase high yielding securities should rates rise in the near future.
- With yields rising, expect duration to increase and experience unrealized losses.

S&P 500 Index

SPX ↑ 2586.63 -9.63 2586.28 / 2587.16
 At 11:25 d O 2580.31 H 2587.65 L 2570.41 Prev 2596.26

SPX Index		95) Compare	96) Actions	97) Edit	Line Chart	
10/01/2018	-	12/31/2018	Last Price	USD	<input type="checkbox"/> Mov Avgs	<input type="checkbox"/> Key Events
1D	3D	1M	6M	YTD	1Y	5Y
			Max	Daily		
						Chart Content



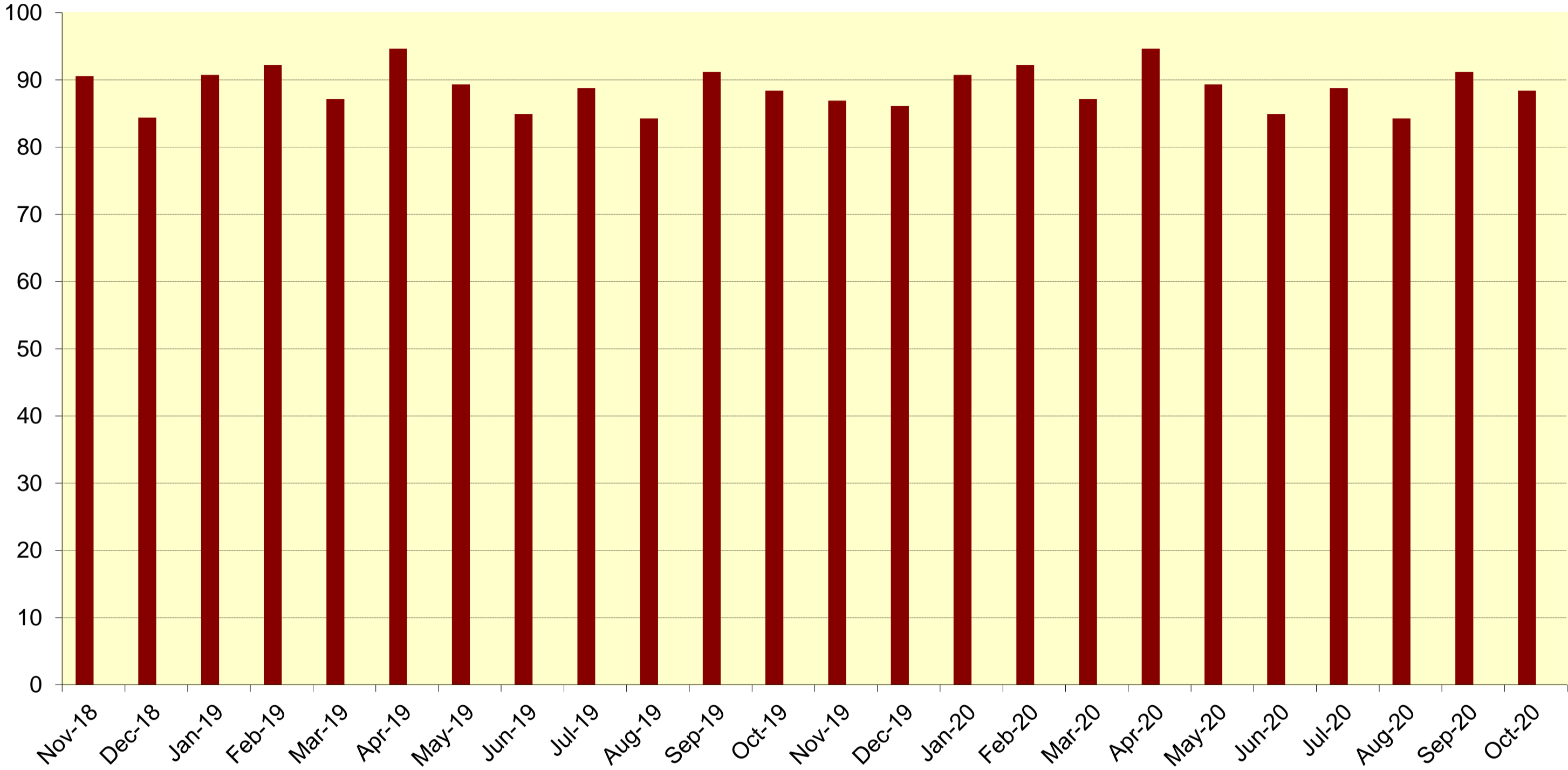
Source: Bloomberg

OPEB 4Q18 Results

- OPEB @ -8.41% ; Blended Index @ -7.45%
- 4Q18 unrealized loss is \$ 23.5M

			<u>Total</u>
• Value:		03-30-18:	\$274.1 MM
	Internal	03-30-18:	\$ (3.9 MM)
		06-30-18:	\$280.5 MM
	Internal	06-30-18:	\$ (7.5 MM)
		09-30-18:	\$278.9 MM
	Internal	09-30-18:	\$ 2.7 MM
		12-31-18:	\$255.4 MM
	Internal	12-31-18:	\$.5 MM
			\$255.9 MM


Diesel Hedging Program



Source: Metropolitan Council



Crude Oil: What's Happening

CL1 ↓ **53.82** -.41  53.81 / 53.82ic 16x20 Prev 54.23
 At 14:14d Vol 687603 Op 54.28 Hi 55.37 Lo 53.62 OpenInt 466044

CL1 COMB Comdty 95) Compare 96) Actions 97) Edit Line Chart
 09/28/2018 - 12/31/2018 Last Price USD Mov Avgs Key Events
 1D 3D 1M 6M YTD 1Y 5Y Max Daily Chart Content



Source: Bloomberg



Questions

