

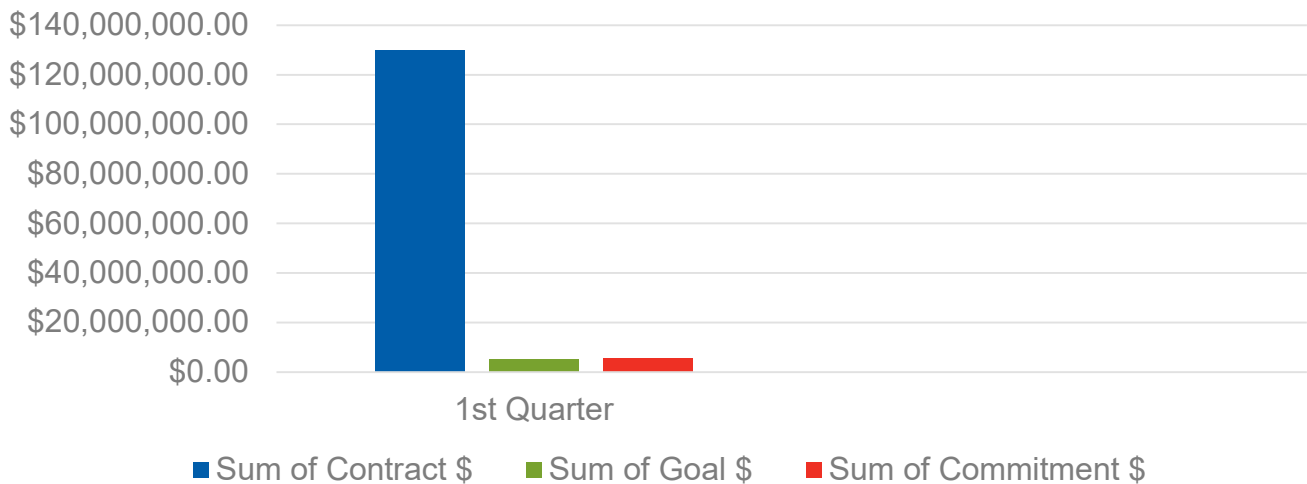


# METROPOLITAN COUNCIL

MCUB Utilization Summary /Q1 2025

2025  
MCUB  
GOAL  
Construction  
& Contracted  
Services:  
14%

## Total MCUB Commitments for Construction & Contracted Services Q1 2025

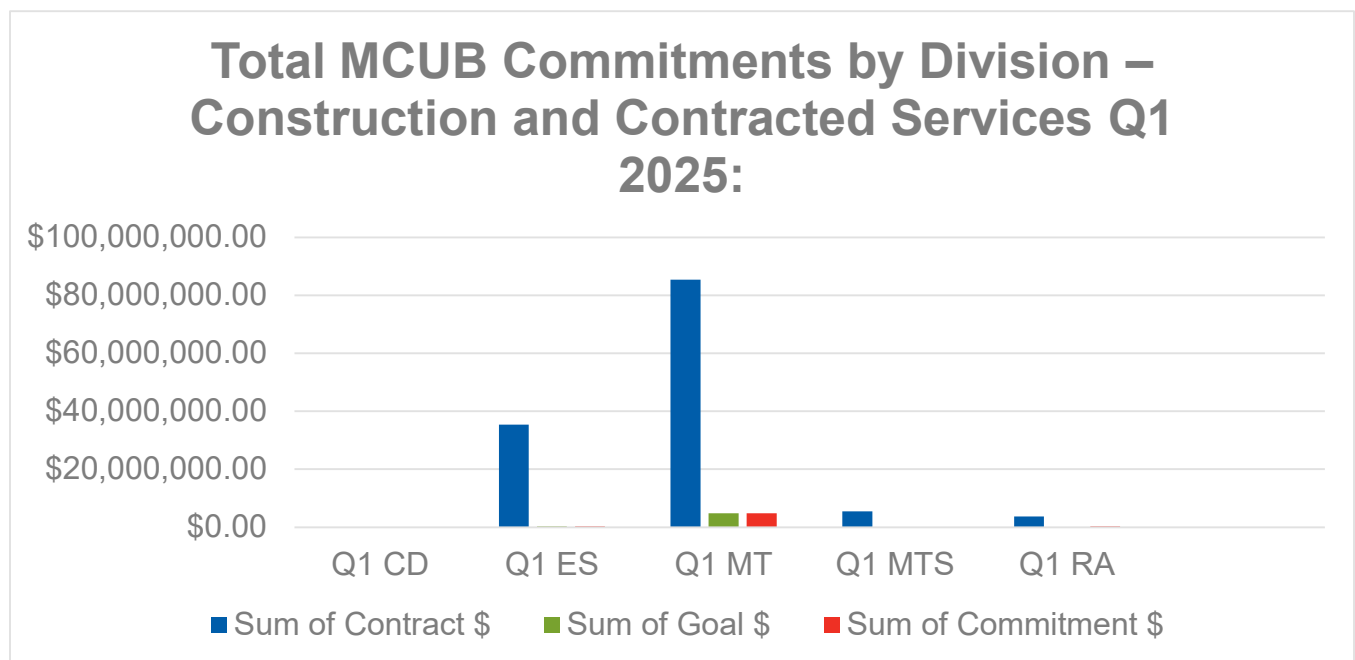


Sum of Contract \$	Sum of Goal \$	Sum of Commitment \$	MCUB %	2025
\$130,044,240.00	\$5,142,004.70	\$5,407,613.12	4.2%	Q1

### Total MCUB Commitments (Gender & Ethnicity) Q1 2025:

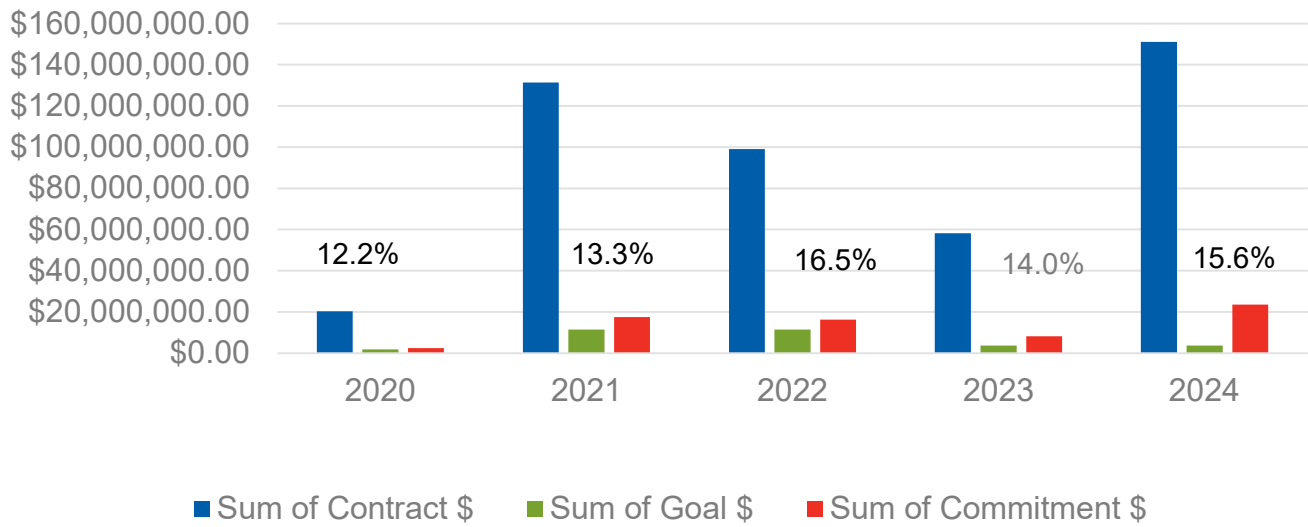
MCUB Firms Ethnicity	Women	Men
Black American	\$0.00	\$0.00
Hispanic American	\$0.00	\$0.00
Native American	\$0.00	\$0.00
Asian-Pacific American	\$0.00	\$103,104.00
Subcontinent Asian Americans	\$0.00	\$0.00
Non-Minority	\$5,304,509.12	\$0.00

### Total MCUB Commitments By Division Q1 2025:



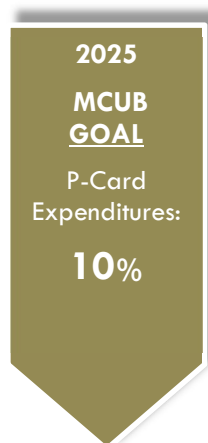
Division	Sum of Contract \$	Sum of Goal \$	Commitment \$	MCUB %
CD	\$50,000.00	\$0.00	\$0.00	0.0%
ES	\$35,411,664.54	\$273,789.92	\$288,166.34	0.8%
Metro Transit	\$85,422,602.39	\$4,847,862.78	\$4,865,046.78	5.7%
MTS	\$5,499,190.00	\$0.00	\$0.00	0.0%
RA	\$3,660,782.77	\$20,352.00	\$254,400.00	6.9%
<b>Total</b>	<b>\$130,044,240.00</b>	<b>\$5,142,004.70</b>	<b>\$5,407,613.12</b>	<b>4.2%</b>

### Historical MCUB Commitment Data (Construction & Contracted Svcs.):



## MCUB Payment Data

### Total P-Card Expenditures Q1 2025:



Pcard Sum Total, Pcard Sum Exclude, Pcard Sum Include, Pcard Percent MCUB Include, Pcard S...

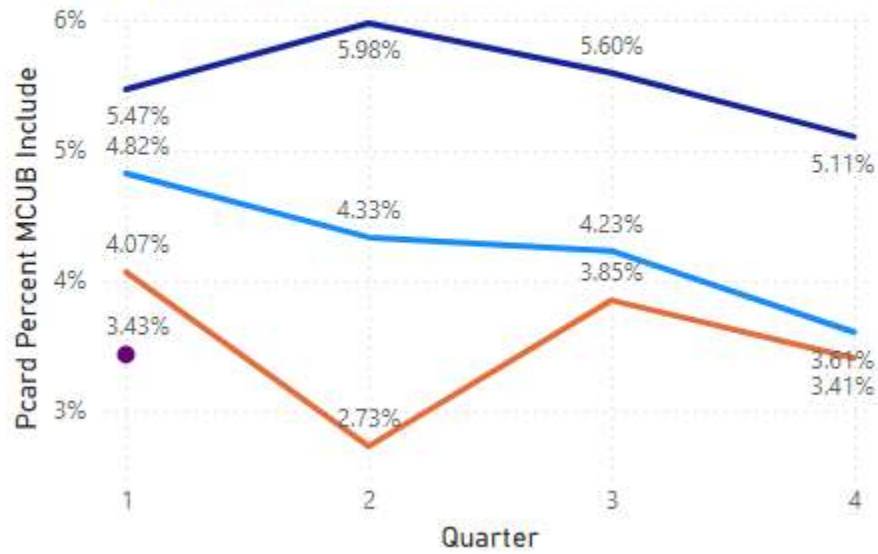
BY DIVISION NAME

Division Name	Pcard Sum Total	Pcard Sum Exclude	Pcard Sum Include	Pcard Sum Include MCUB	Pcard Percent MCUB Include
Community Development	\$45,752	\$36,068.9	\$9,684	\$709	7.32%
Environmental Services	\$252,520	\$63,619.2	\$188,901	\$4,081	2.16%
Metro Transit	\$1,257,794	\$96,873.54	\$1,160,921	\$35,251	3.04%
Metropolitan Transportation Services	\$25,658	\$15,545.57	\$10,112	\$106	1.05%
Regional Administration	\$225,465	\$157,745.61	\$67,720	\$9,218	13.61%
<b>Total</b>	<b>\$1,807,190</b>	<b>\$369,852.82</b>	<b>\$1,437,337</b>	<b>\$49,365</b>	<b>3.43%</b>

## Pcard Percent MCUB Include

BY QUARTER, YEAR

Year ● 2022 ● 2023 ● 2024 ● 2025



MCUB P-Card percent Achievement Year-End	
2022	4.2%
2023	5.6%
2024	3.5%
2025	3.4%

## **Total MCUB Payments Q1 2025 = \$6,192,617**

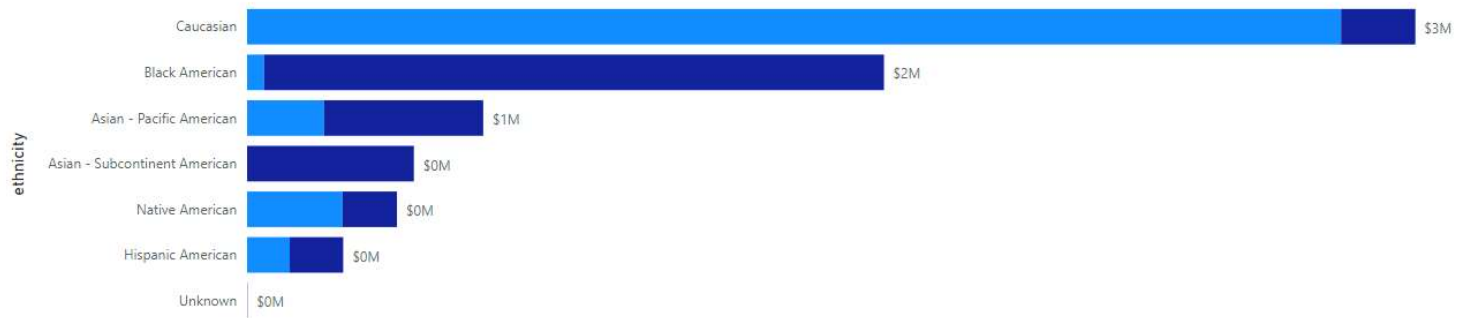
PO Goods & Services MCUB, Pcard Sum Include MCUB, Spend All MCUB Sum, SUBC Sum MCUB, PO Sum Include Construction MCUB

BY ETHNICITY

Ethnicity	PO Goods & Services MCUB	PO Sum Include Construction MCUB	Pcard Sum Include MCUB	SUBC Sum MCUB	Spend All MCUB Sum
Asian - Pacific American	\$308,363	\$160,872	\$1,939	\$124,613	\$595,787
Asian - Subcontinent American	\$388,139			\$32,633	\$420,772
Black American	\$1,592,486		\$7,720	\$6,612	\$1,606,819
Caucasian	\$2,456,673		\$36,479	\$454,496	\$2,947,648
Hispanic American	\$130,800			\$111,724	\$242,524
Native American	\$104,812		\$3,226	\$270,165	\$378,202
Unknown	\$865				\$865
<b>Total</b>	<b>\$4,982,138</b>	<b>\$160,872</b>	<b>\$49,365</b>	<b>\$1,000,243</b>	<b>\$6,192,617</b>

Total MCUB Payments by Demographic

gender ● Female ● Male



## **Direct Payments to Contractors by Year:**

Year	PO Total Payments Include Construction	PO Construction MCUB	% MCUB Payments PO Construction
2024	\$50,314,421.54	\$198,346.92	0.4%
2023	\$35,517,948.09	\$663,715.18	1.9%
2022	\$34,271,508.54	\$1,053,275.68	3.1%

Q1 2025 = \$160,872

## **2025 Q1 MCUB Highlights:**

### **MCUB Direct Spend Success** (Micro purchases up to \$25K)

Q1 2024 MCUB Direct Spend was 20%

Q1 2025 MCUB Direct Spend was 36% (Highest Quarter in Data Set going back to Q1 2019)

### **MCUB Preference Success\***

Great River Office Products - \$36,811.00 (Office Furniture)

Treasure Enterprise, Inc. - \$124,396 (Services to Clean Public Facilities)

### **MCUB State Contract Success**

Biff's Inc. - \$100,000.00 (Portable Restroom Rentals)

Abundant 180 - \$35,797.00 (Wire Racking for Martin J Ruter Garage)

Abundant 180 - \$28,284.00 (Workstation for TCC Building)

### **MCUB Partnership with New Flyer**

B & L started as a distributor of New Flyer components in September 2022

Q1 spend in 2024 was \$352,861.83

Q1 spend in 2025 was \$449,721.08

### **MCUB Partnership with Gillig**

MA Associates Started as a distributor of Gillig components in September 2023

Q1 spend in 2024 was \$751,685.24

Q1 spend in 2025 was \$1,201,897.77

### **Ideal Commercial Interiors Partnership with Fastenal est. Sept. 2024**

Q1 spend in 2024 was \$10,000.00

Q1 spend in 2025 was \$23,983.00

## **Metropolitan Council Small Business Supportive Services:**

Type of Service	# Registered	# attended
Introduction to Government Contracting	37	25
How to Estimate and Bid	36	16
How to Respond to an RFP	39	11
Managing Contract Changes	24	3
One-on-one business consultations services	8	8
<b>Total</b>	<b>144</b>	<b>63</b>