



# Draft Service Improvement Plan

Help shape the future of Metro Transit bus service  
We're setting priorities for our growing transit system



Transportation Committee  
October 13, 2014

Cyndi Harper  
Manager of Route Planning

# What is the Service Improvement Plan (SIP)?

- Identifies Metro Transit's local and express bus service improvement priorities
  - Includes Arterial BRT, connecting bus services to planned transitways
- Operating investments only, not capital
- New or expanded service through 2030
  - Emphasis on the first ten years (through 2024)
  - Updated every four years

# Guiding Principles

- Maximize ridership growth
- Emphasize high productivity/low-subsidy projects
- Provide faster travel time
- Enhance connectivity of transit system
- Support transit-friendly land use and design
- Expand service for off-peak and non-work trip purposes
- Improve transit equitably

# Project Identification Methodology

- Survey
- Feedback from Thrive MSP, 2040 TPP, other recent projects
- Customer Relations requests
- Staff ideas, including Transit Information Center input

## SIP Evaluation Criteria

- **Productivity** criteria demonstrate the ridership potential of service improvements using land use and density factors (50% weight)
- **Social equity** criteria evaluate how well improvements serve people most reliant on transit (25% weight)
- **System connectivity** criteria establish how well projects improve connections and service throughout the Metro Transit service area (25% weight)

# Initial Screening-All Projects

- 41 High projects
  - 8.9 Million new rides
  - \$2.73 Subsidy per Passenger
- 82 Medium projects
  - 7.3 Million new rides
  - \$5.40 Subsidy per Passenger
- 43 Low projects
  - 2.5 Million new rides
  - \$12.34 Subsidy per Passenger



Recommended to  
move forward into  
Draft SIP

# Draft SIP: Types of Service Improvements

Of the 123 projects

- 77 expand coverage and connectivity
- 71 improve frequency on existing service
- 62 expand span of service
- 14 add reverse commute service

# Draft SIP: Route Type

Of the 123 projects

- 50 Urban Core
- 14 Urban Supporting
- 27 Suburban Local
- 33 Commuter/ Express

11 Arterial BRT (not included in the 123 evaluated projects)



## Draft SIP: Resources

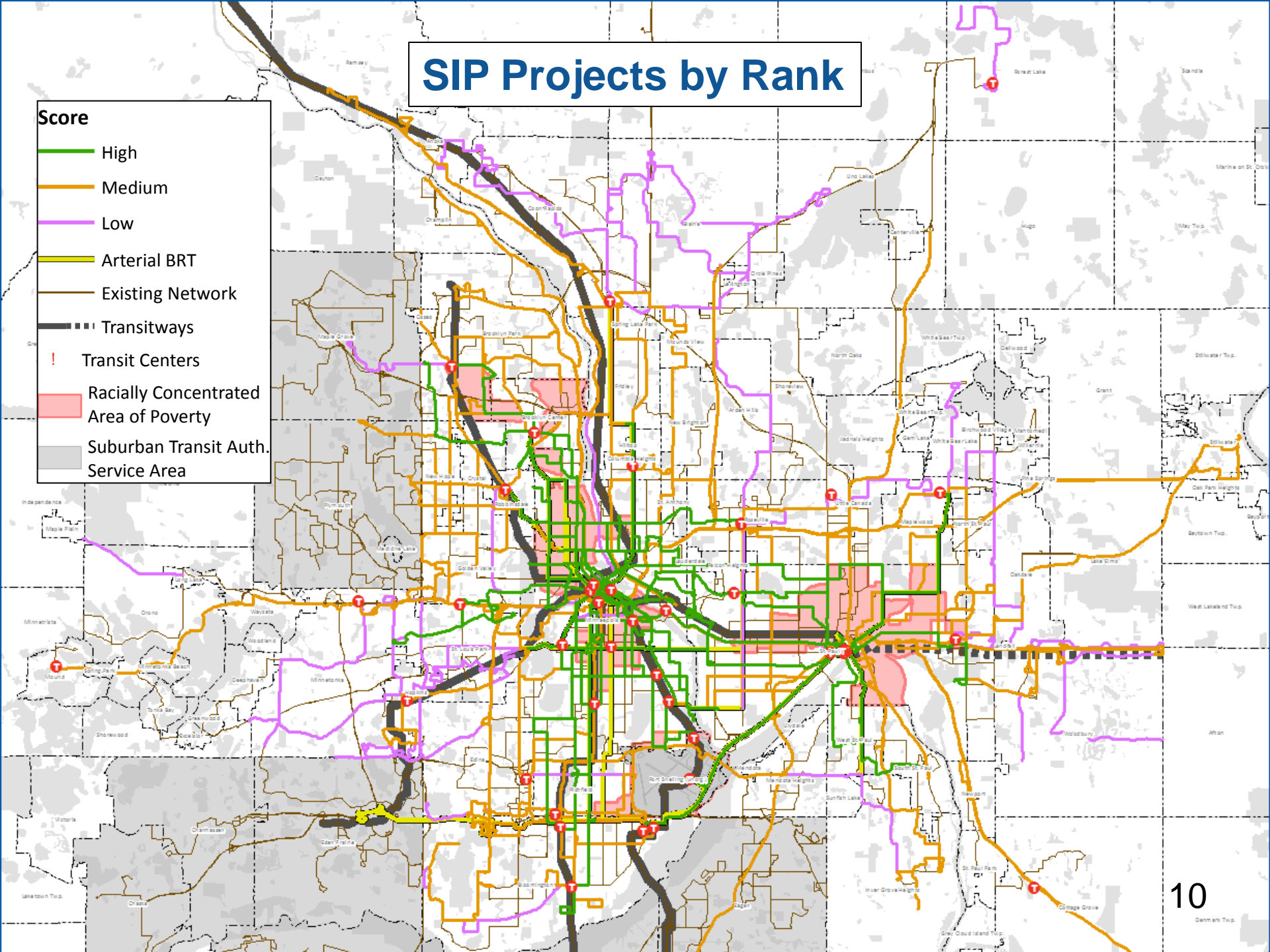
	Draft SIP	Arterial BRT	Total
Platform Hours	668,500	269,500	938,000
Peak Buses	135	26	161
New Passengers	16.2 Million	12.7 Million	28.9 Million
Total Cost (2014\$)	\$75.5 Million	30.5 Million	\$106 Million
Total Subsidy	\$56.4 Million	18.8 Million	\$75.1 Million
Subsidy Per Passenger	\$3.48	\$1.48	\$2.60

\* Costs do not include capital costs of fleet, expanded bus operating facility

# SIP Projects by Rank

**Score**

- High
- Medium
- Low
- Arterial BRT
- Existing Network
- Transitways
- Transit Centers
- Racially Concentrated Area of Poverty
- Suburban Transit Auth. Service Area



## SIP Development Process & Timeline

- Initial stakeholder outreach Nov - Dec 2013
- Phase I public input Dec - Feb 2014
- Review and process input Feb - Apr 2014
- Develop draft SIP May - Oct 2014
  - Council member briefings
  - 10/13 Business Item to release draft SIP for public comment
- Review draft SIP Nov 2014
  - Public comment period
  - Title VI service equity review
- Refine and finalize SIP First quarter 2015

We are here

## Proposed Action

That the Metropolitan Council release the Draft Service Improvement Plan for public review and comment.

# Draft Service Improvement Plan

Help shape the future of Metro Transit bus service  
We're setting priorities for our growing transit system



Transportation Committee  
October 13, 2014

Cyndi Harper  
Manager of Route Planning