

2013 Population Estimates

Metropolitan Council
July 9, 2014



Council's Population Estimates

- Conducted since 1971
- Mandated under Minnesota Statutes 473.24
 - Timeline and process defined in statute
- Official state government population estimates used to allocate:
 - Local government aid
 - Local street aid
 - Tax-base sharing under Fiscal Disparities
- Used to track growth and development

Estimates are not Forecasts!

- The Council's forecasts look ahead to 2040
- Estimates look back in time to the previous year



A housing-stock-based approach

- Base population and housing units from the 2010 Census
- “How many housing units were there in 2013?”
 - Changes in housing stock by type
 - City-provided data on building permits / demolitions

A housing-stock-based approach

- Base population and housing units from the 2010 Census
- “How many housing units were there in 2013?”
- “How many of those housing units were occupied?”
 - Occupancy rates by type
 - American Community Survey (U.S. Census Bureau)

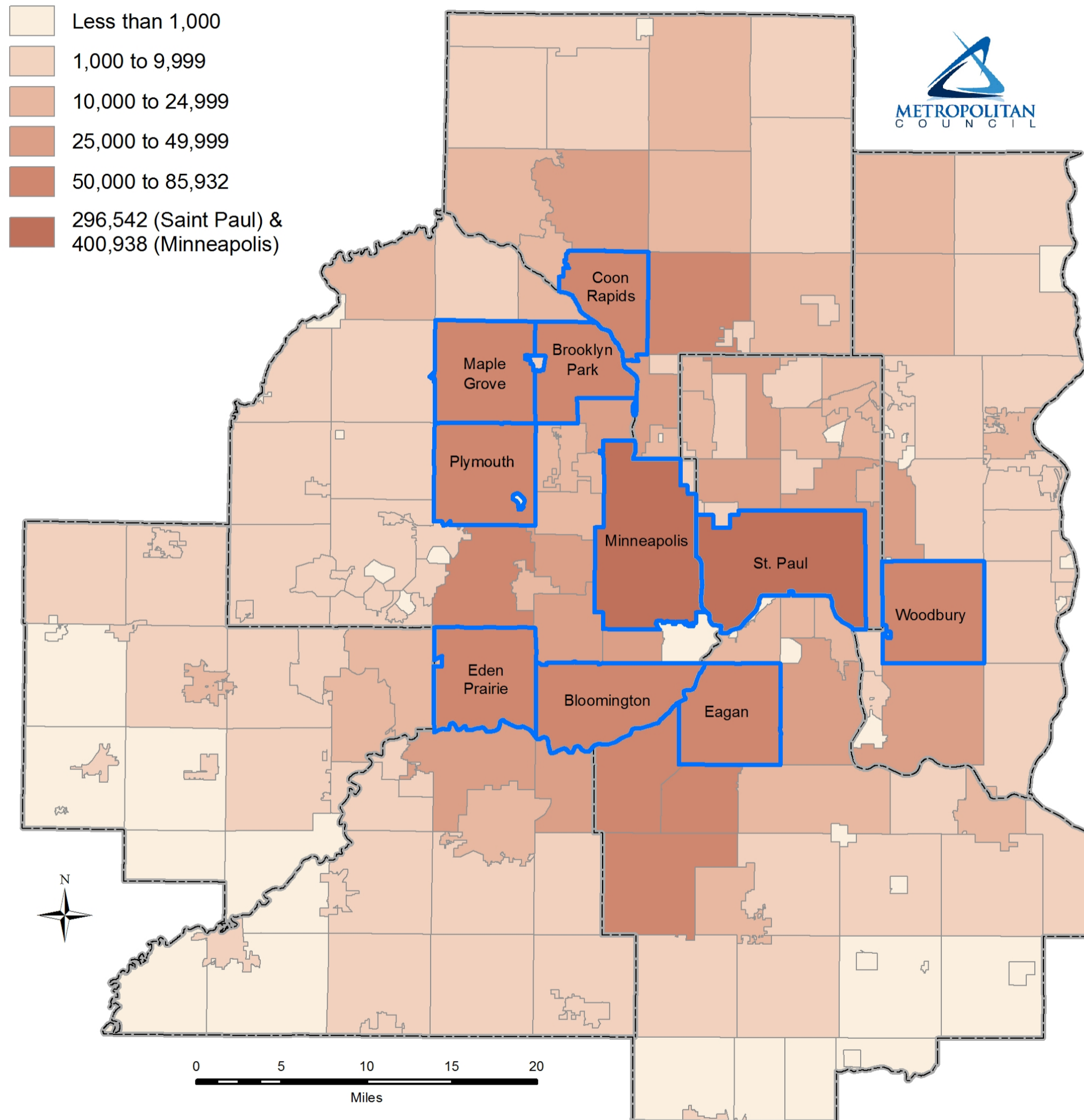
A housing-stock-based approach

- Base population and housing units from the 2010 Census
- “How many housing units were there in 2013?”
- “How many of those housing units were occupied?”
- “How many people lived in those units?”
 - Average household sizes by type
 - American Community Survey (U.S. Census Bureau)

2013 Population Estimates

- 2013 population: 2,950,885
 - Increase of 101,318 residents from 2010
 - 3.6% growth since 2010
- Components of growth:
 - Two-thirds “natural growth” (births > deaths)
 - One-third migration

Population in 2013

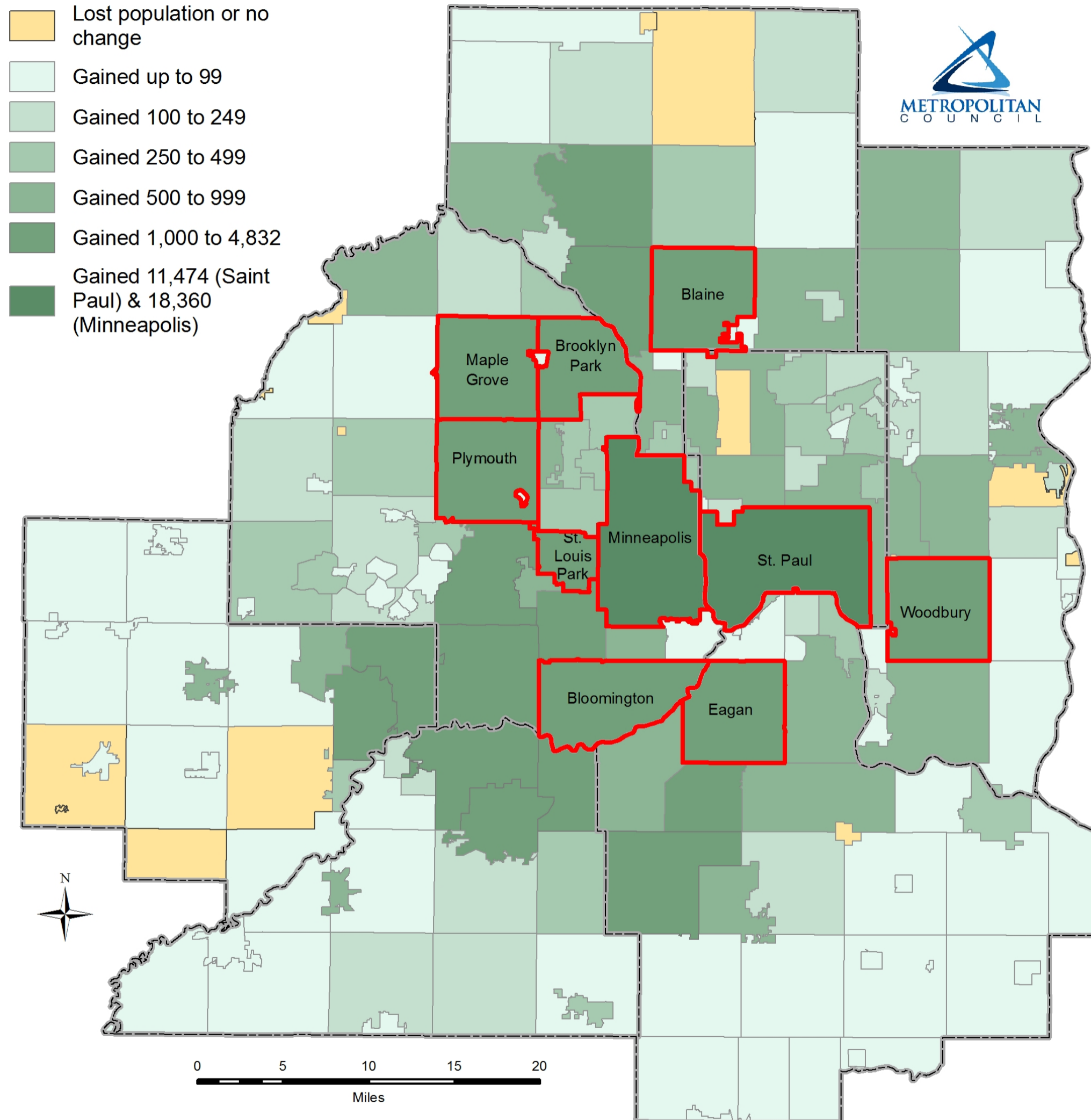


Source: Metropolitan Council Population Estimates

Note: The ten most populous cities in the region are outlined in blue.



Population Change, 2010 to 2013

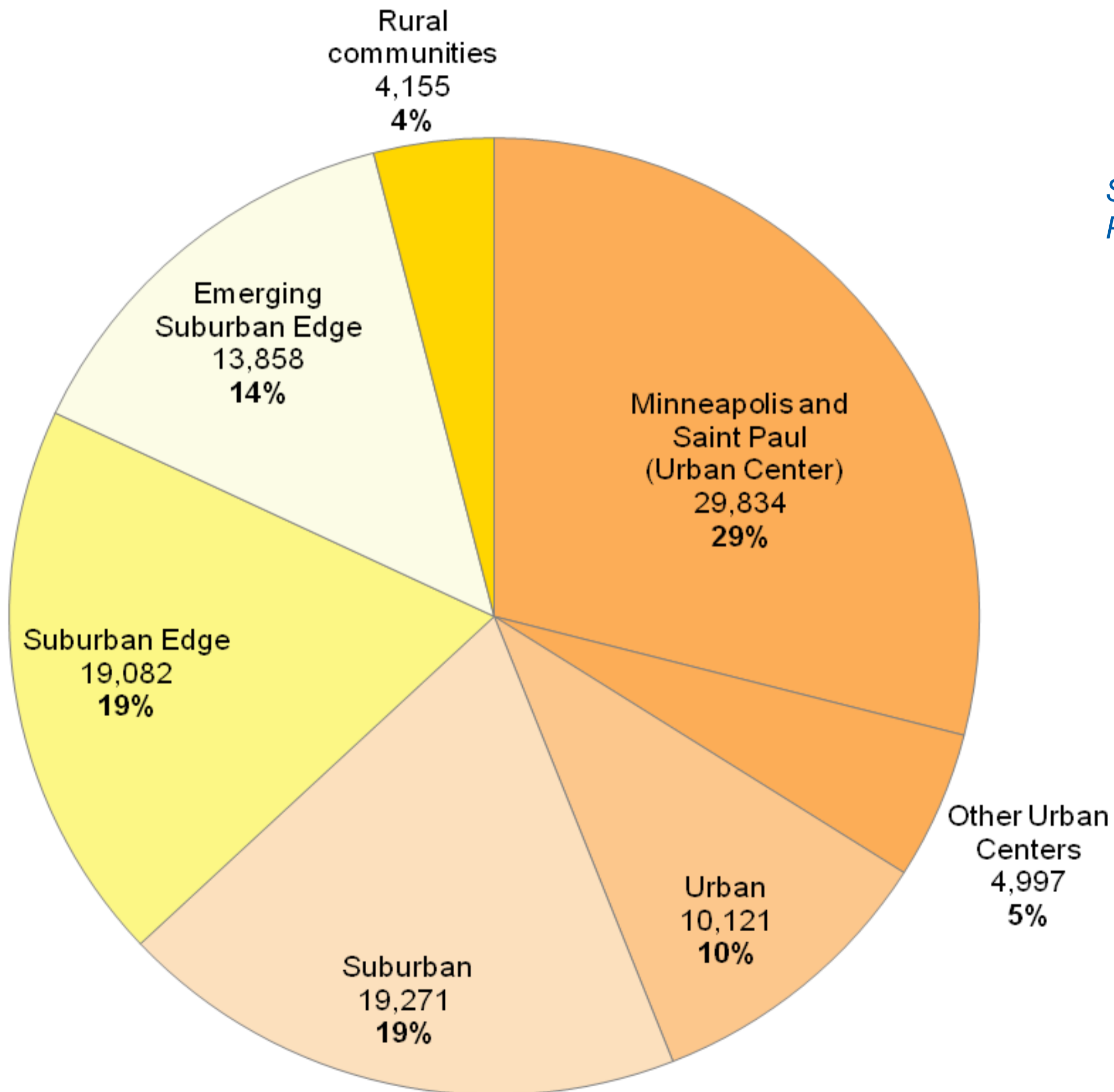


Source: Metropolitan Council Population Estimates

Note: The ten cities with the most growth since 2010 are outlined in red.



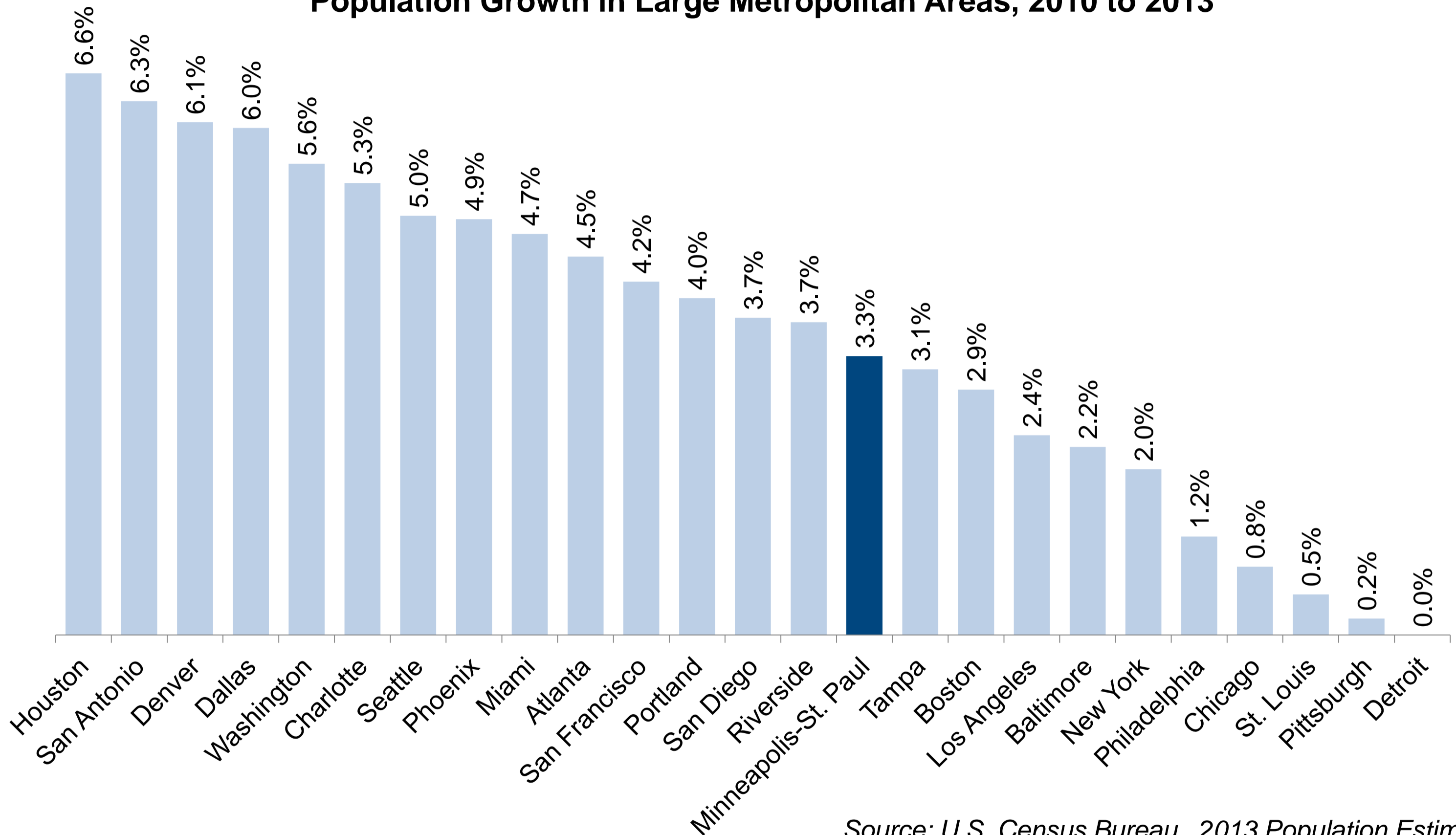
Growth by community designation



Source: Metropolitan Council
Population Estimates

Our region in context

Population Growth in Large Metropolitan Areas, 2010 to 2013



Source: U.S. Census Bureau, 2013 Population Estimates



Population Estimates 2013

For more information, visit: www.metrocouncil.org/data

