

Water Resources Policy Plan Update

Bryce Pickart, Assistant General Manager, MCES

Judy Sventek, Water Resources Assessment Section, Manager

Presented: April 22, 2015



Direction from Thrive MSP 2040

Outcomes

- Stewardship
- Prosperity
- Sustainability
- Livability
- Equity

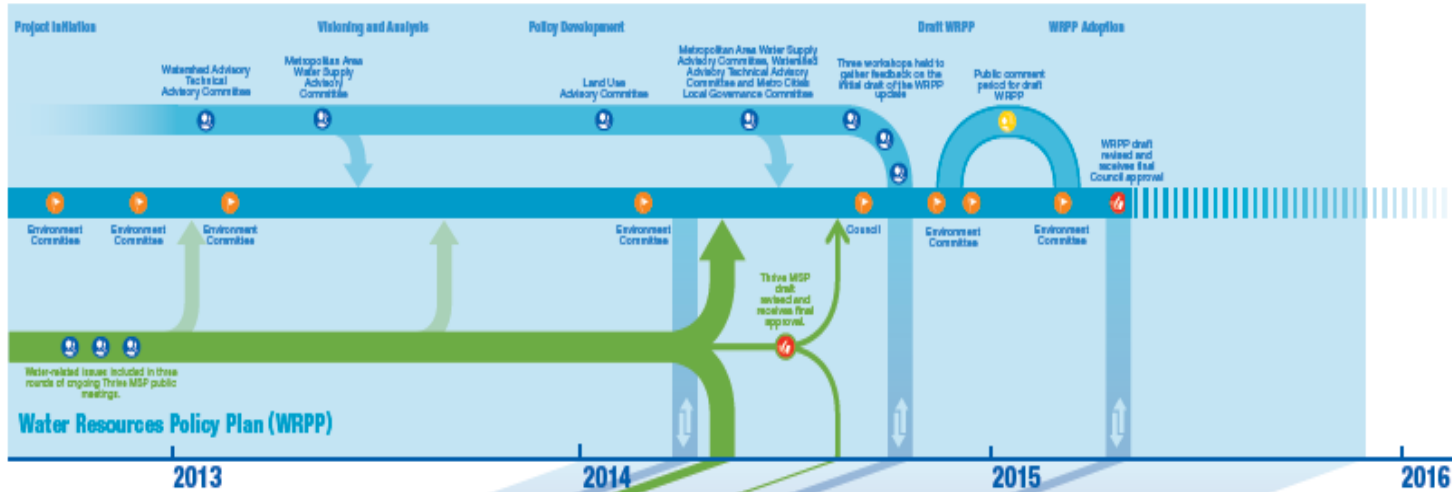
Operating Principles

- Integration
- Collaboration
- Accountability

Water
Resources
Policy Plan

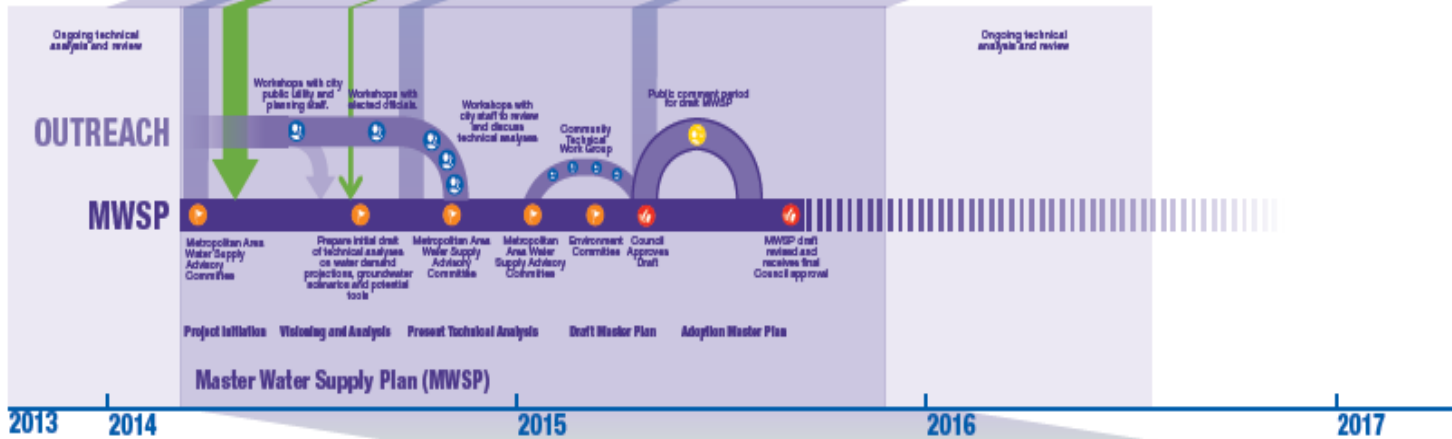
OUTREACH

WRPP



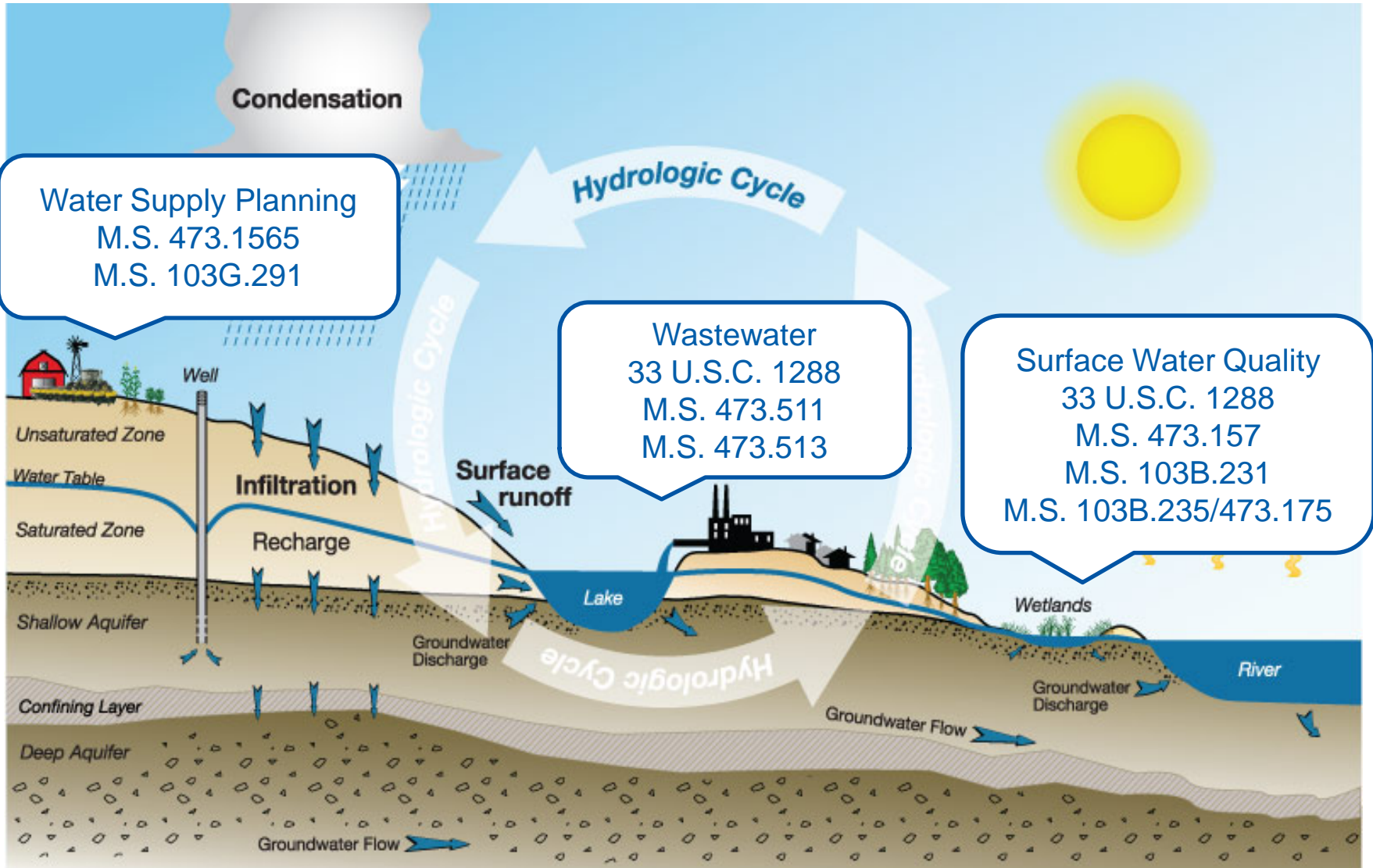
The Metropolitan Council prepares the regional development framework, Thrive MSP 2040, and related policy plans for the seven-county metropolitan area. This chart shows the connections among Thrive MSP 2040, the Water Resources Policy Plan and the Master Water Supply Plan.

After the Council approves the overall concept of what policies to include, constituencies will have multiple opportunities to provide feedback on both plans, including ongoing policy discussions with residents, cities, and other government agencies. The plans then go through a formal public comment period before final consideration by the Council. The Master Water Supply Plan is then approved by the DNR.



STRATEGIC PLANNING

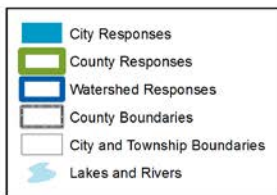
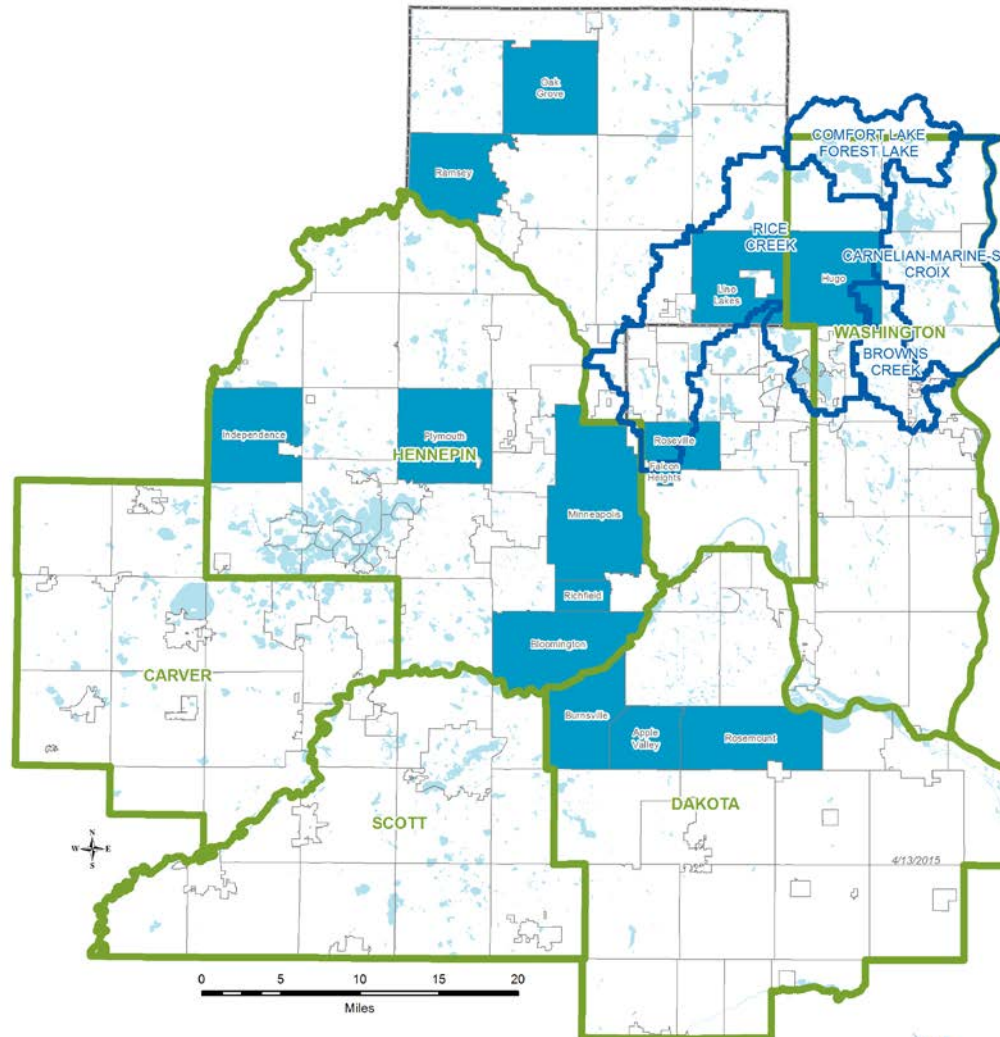




Elements of WRPP that Reflect Connection to Thrive

- Integrated and collaborative water resource planning
- Efficient and effective government
- Emphasis on conservation and reuse
- Climate Change

Organizations that Submitted Comments



Comment Themes

- General Comments
- Regional Growth Policy
- Reuse and Conservation
- Roles and Responsibilities
- Specific Comments
- SSTS and Communal Systems
- Surface Water
- Sustainability
- Wastewater
- Water Supply

Common Areas of Agreement

- Integrated approach
- Need for technical and financial assistance
- Need for further collaboration on the issues
- Stormwater and wastewater reuse concepts
- Need for looking into wastewater reclamation facilities to serve in the future
- Investment strategy on maximizing regional investments

Key Areas of Change

- Policy on sustainable water supplies
- Water supply strategy on resiliency related to sources
- Roles and responsibilities in water supply
- Water monitoring and assessment role

Policy on Sustainable Water Supplies

Original language:

- *The Council shall support and plan for the sustainable use of water sources that focuses on the implications of increasing groundwater use including impacts to surface waters, wetlands, and ecological areas while ensuring that supplies of potable water are sufficient for the region's current population and projected growth.*

Revised language:

- **While recognizing local control and responsibility for owning, operating, and maintaining water supply systems, the Council will work with our partners to develop plans that meet regional needs for a reliable water supply that protects public health, critical habitat and water resources over the long-term.**

Water Supply Resiliency Strategy

Original language:

- *Promote water supply resiliency by identifying and pursuing options to increase surface water use, when economically feasible.*

Proposed language:

- **Support community efforts to improve water supply resiliency by cooperatively identifying economically and technically feasible water supply alternatives.**

Roles and Responsibilities in Water Supply

Original language:

- *Collaborate with agency partners in developing and implementing Groundwater Management Areas, wellhead protection plans, review of water appropriation permits, and aquifer recharge projects.*

Proposed language:

- **As required by Minnesota Statutes, continue to review and comment on local water supply plans.**
- **As requested by the DNR, continue to review and comment on Groundwater Management Areas and water appropriation permits.**
- **As required by Minnesota Statutes, continue to review and comment on wellhead protection and county groundwater plans.**

Monitoring and Assessment Role

Proposed language:

- **The Council works closely with state agencies, communities, counties, watershed organizations, and others involved with monitoring water resources in the metro area to strategically design our program to fill gaps in monitoring and assessments needed related to the condition of our area lakes, rivers and streams. For example, in partnership with many others the Council monitors and assesses the condition of around 200 lakes a year and 21 stream sites. We work closely with state agencies on coordinating and filling gaps in monitoring and assessment activities for the major rivers. For that program, the Council monitors 22 river sites a year.**

Questions?