

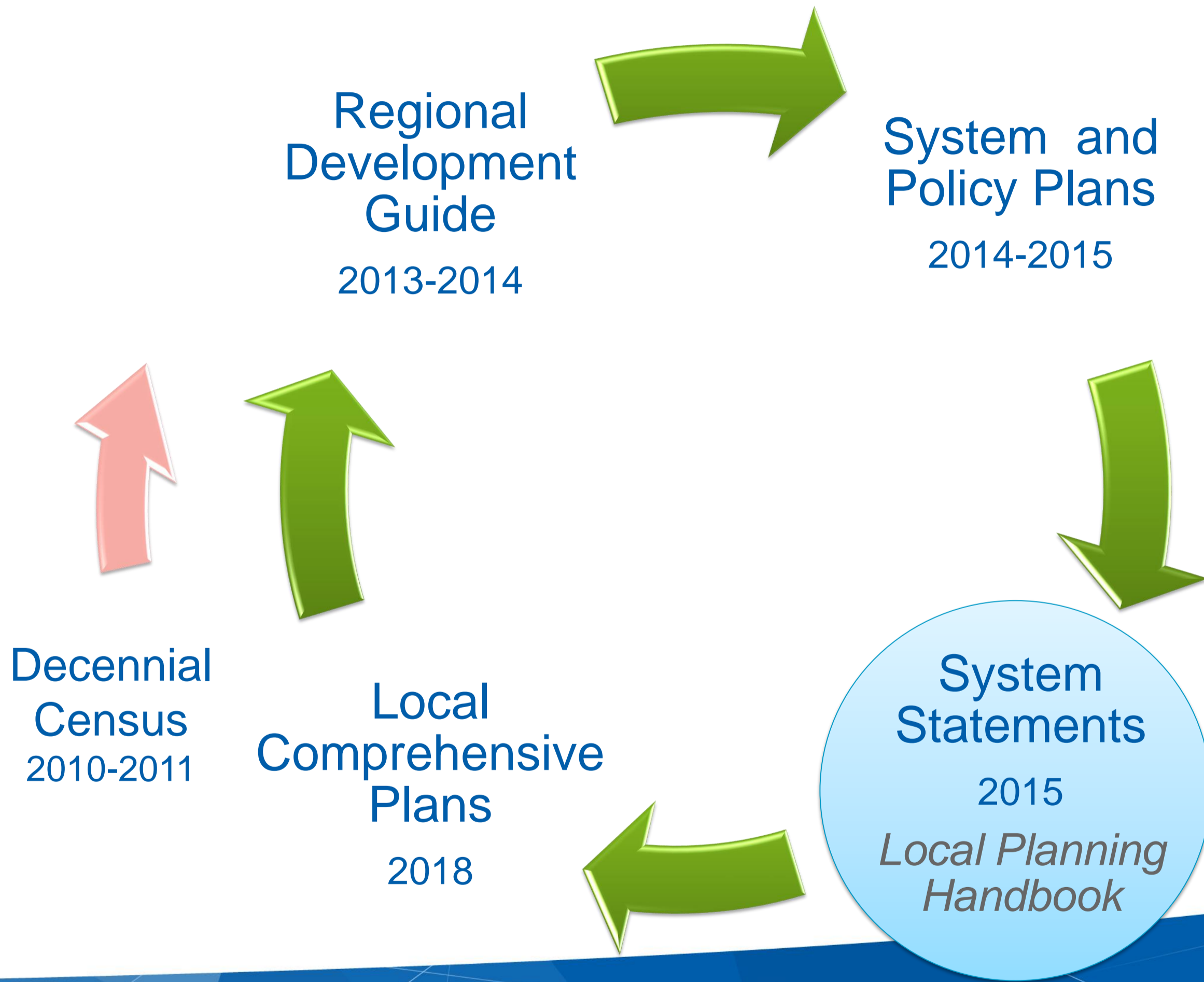
2015 System Statements & Local Planning Handbook

September 9, 2015

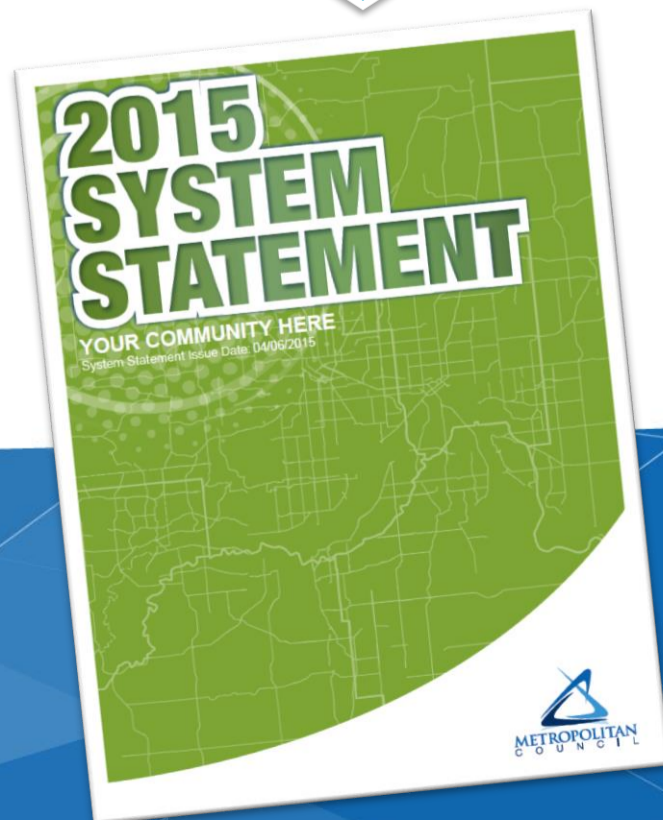
Metropolitan Council



Regional Planning Cycle

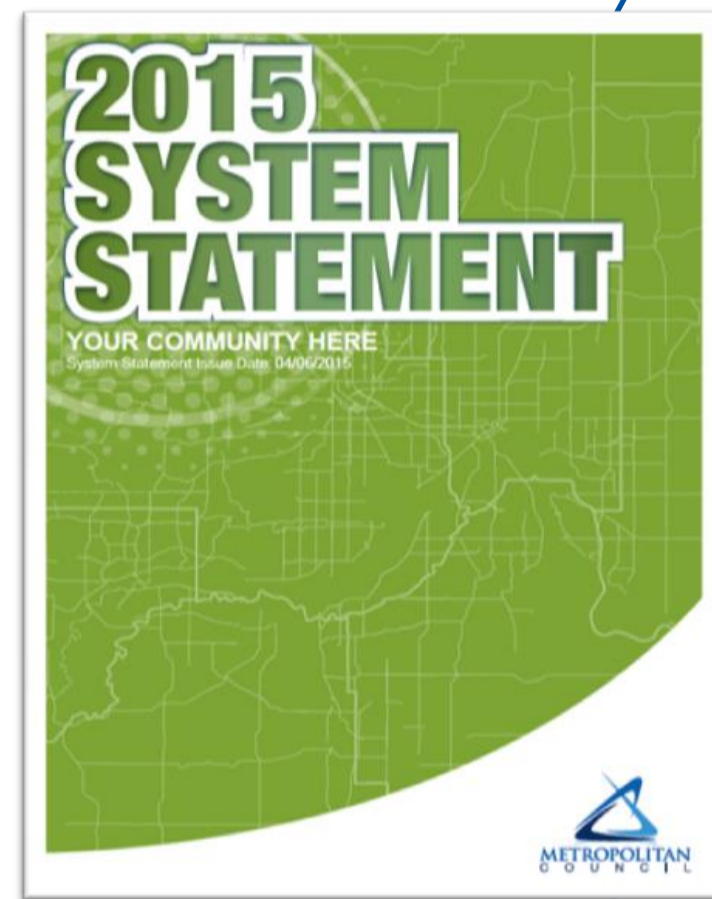


System Statement Purpose



- ✓ Individualized for the local unit of government
- ✓ Explains the implications of system plans and capital budgets *in that community*
- ✓ Includes forecasted growth and general development expectations

System Statement Content



Thrive

- Community designation
- Forecasted growth
- Housing policy

Transportation

- Metropolitan highway system
- Transit system
- Aviation system
- Other considerations

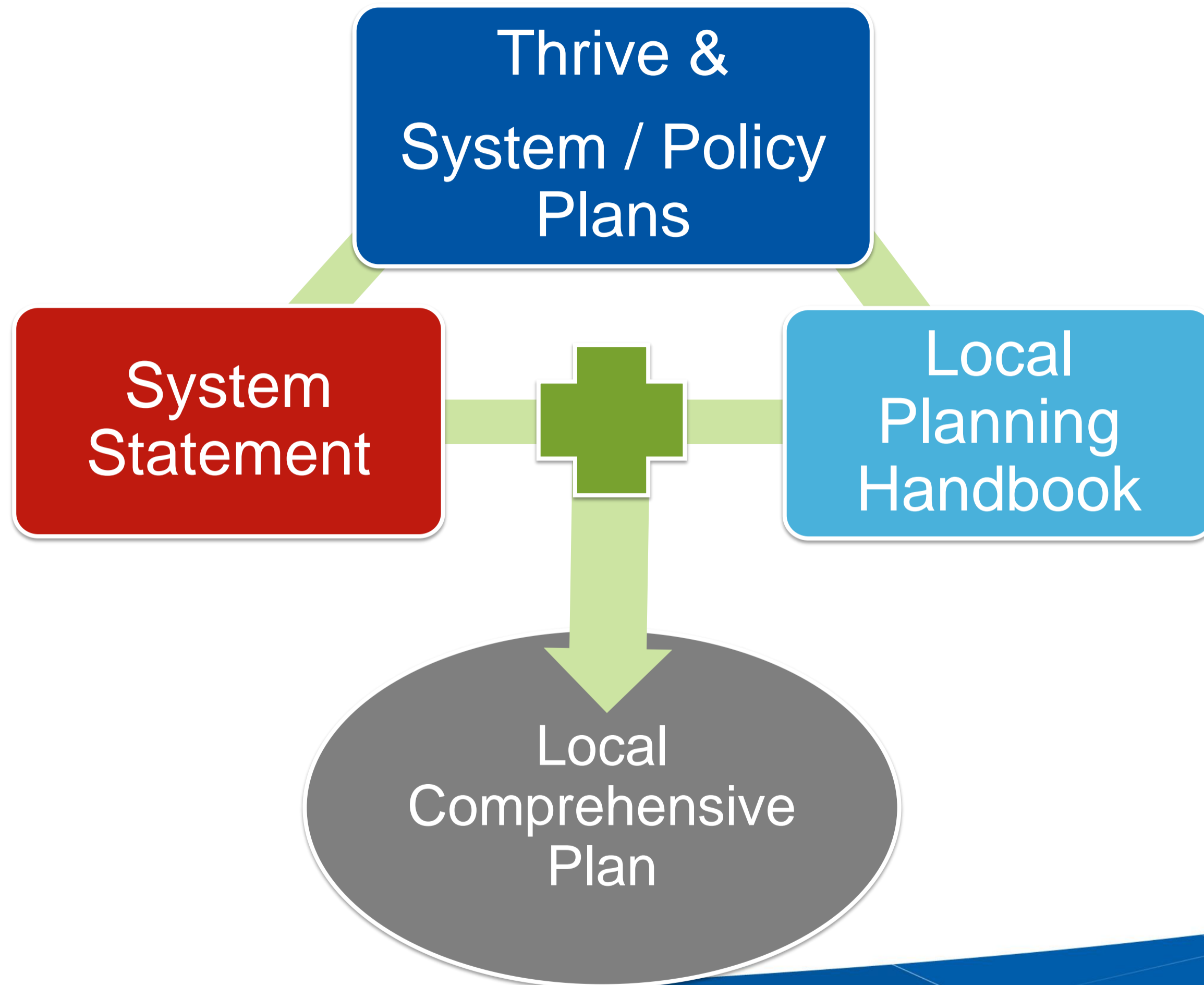
Water resources

- Metropolitan sewer service
- SSTS
- Surface water
- Other considerations

Regional Parks and Open Space

- Regional parks
- Regional trails

Planning Document Relationship



What if a community has questions or disagrees with an item in the statement?



Discuss with
your Sector
Representative



No resolution?
Request a
hearing within
60 days



LUAC or Office
of Administrative
Hearings holds
hearing and
makes a report



Council makes a
final
determination
based on report



Next steps

Preview

- About 5-7 days before mailing
- Completed PDFs of System Statements
- We will email you the link

Publication

- Metrocouncil.org
- All System Statements (PDF) organized by County
- Widely distribute web link

Mailing

- Printed documents
- Certified mail



Local Planning Handbook

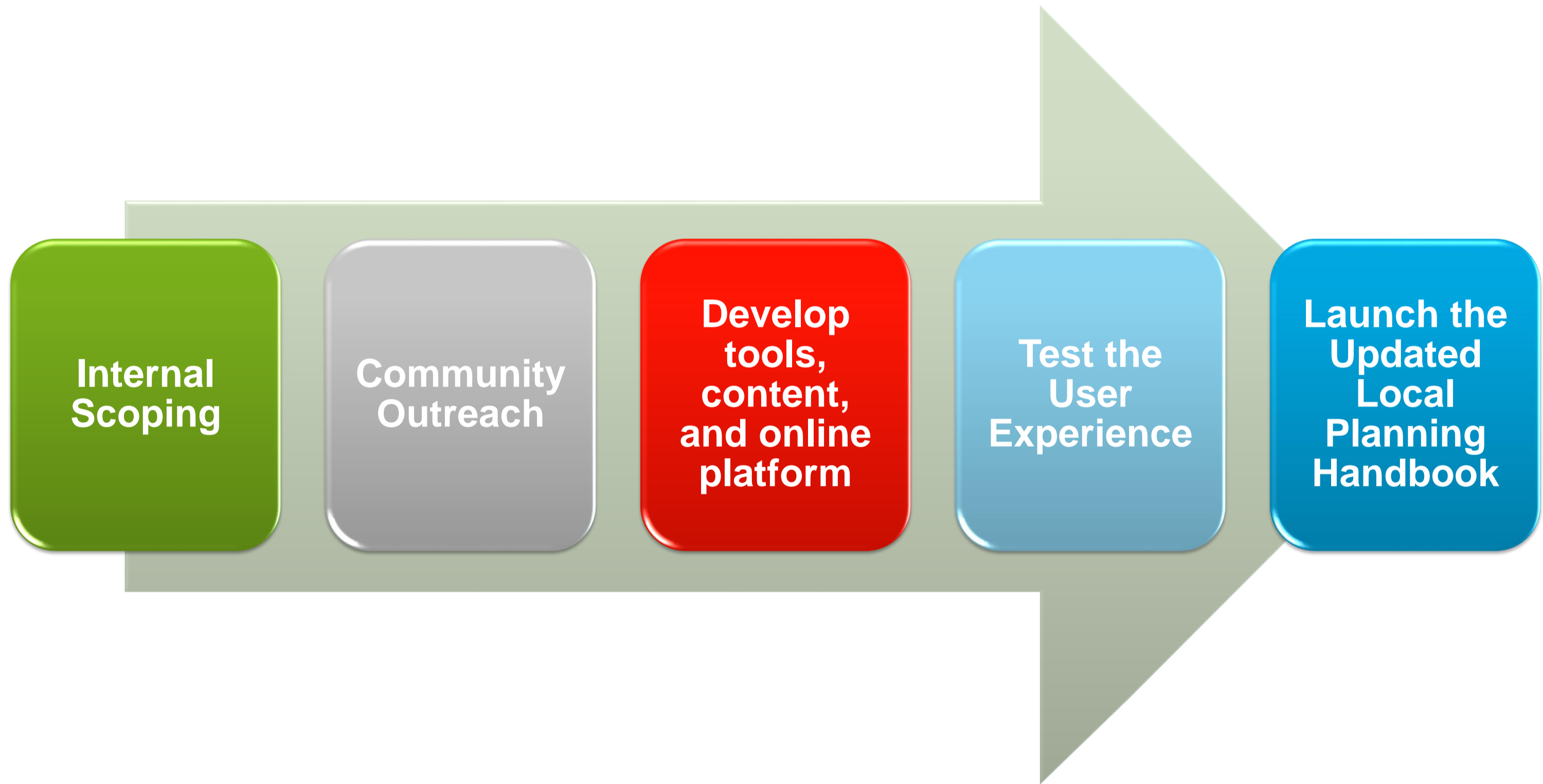
Update to the Metropolitan Council

September 9, 2015

**LOCAL PLANNING
HANDBOOK**



Process and Timeline





External Focus Group

- 33** CITIES
- 2** COUNTIES REPRESENTING **21** TOWNSHIPS
- 6** PLANNING CONSULTING FIRMS
- 9** COMMUNITY DESIGNATIONS (ALL!)
- 16** COUNCIL DISTRICTS (ALL!)



Coordination with MetroCities
Review by Land Use Advisory Committee (LUAC)



Testing Outcomes

Resource
Development

Text
Clarifications

Consensus
Building

Reorganization
and
Collaboration

“We were part of the review in 2008 and in the review of the comprehensive plan process. You’ve solved all the issues that we identified in the 2008 process. I’m super impressed with the LPH and very grateful!”

Jake Reilly, City of St. Paul

“You engaged us and we’re so appreciative. You’ve done a great job! This is our opportunity to collaborate with the Metropolitan Council.”

Breanne Rothstein, WSB & Associates

“The customized approach to data access and new emphasis on electronic document submission exemplifies innovative use of technology to create a planning tool that truly pushes the envelope and enables local communities to make the most of their comprehensive plans.”

Nate Kabat, Carver County





METROPOLITAN
C O U N C I L