

INFORMATION ITEM: MAWSAC Report on Water Supply Planning Activities

Dean Lotter, MAWSAC Committee Member
Lanya Ross, Environmental Analyst

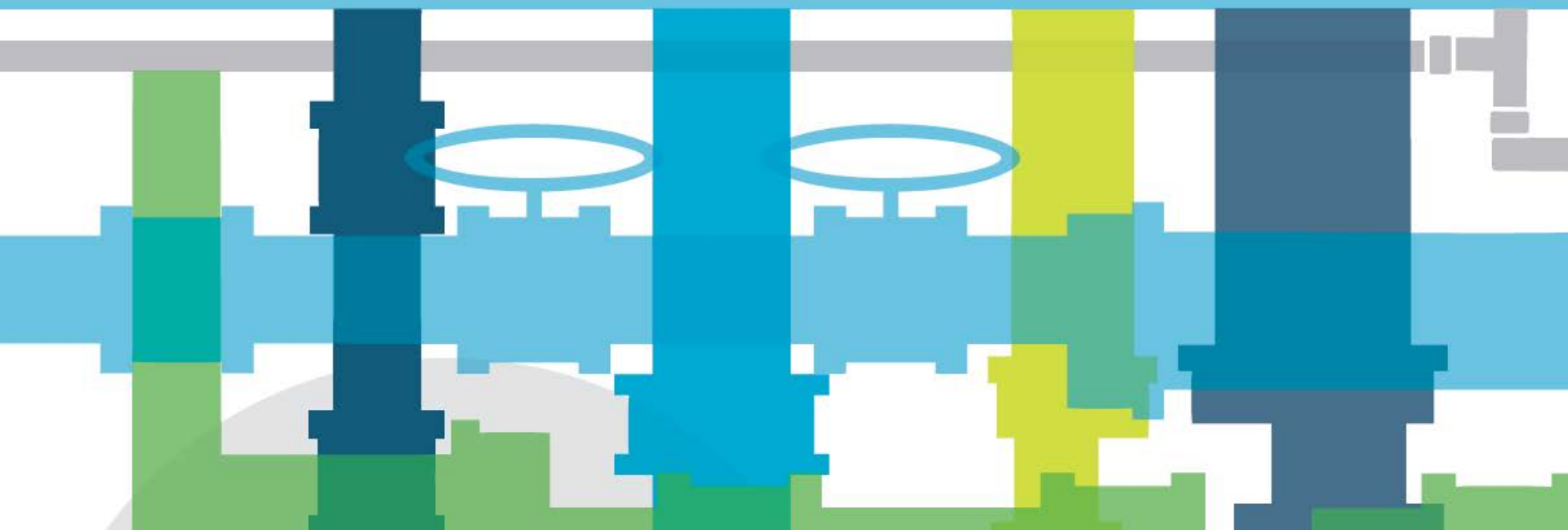
Metropolitan Council: February 22, 2017





WATER SUPPLY NOW AND FOR THE FUTURE

Steps toward sustainable water supplies



METRO AREA WATER SUPPLY ADVISORY COMMITTEE (MAWSAC)



18 Members + TAC

- State agencies
 - Counties
 - Municipalities/utilities
-

Created by Minnesota Legislation

- Minnesota Statutes, Section 473.1565

Purpose

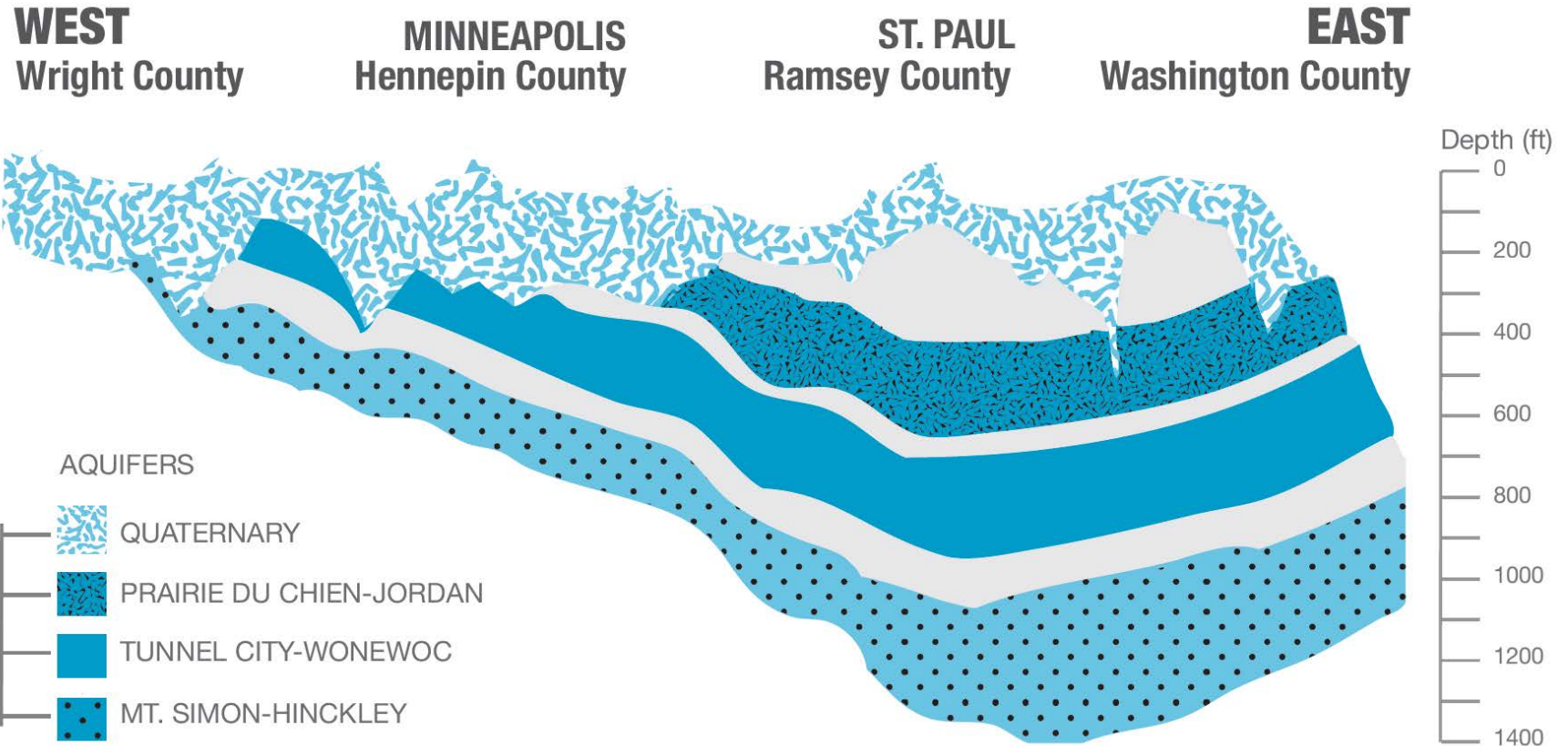
- Assist and guide Council water supply planning
- Approve Master Water Supply Plan
- Appoint Technical Advisory Committee

IN “THE LAND OF 10,000 LAKES”

Why worry
about water supplies?



FOUR EXTENSIVE AQUIFERS



THREE RIVERS

St. Croix River Flow:

320

Million
Gallons/Day

Minnesota River Flow:

1,290

Million
Gallons/Day

Mississippi River Flow:

1,940

Million
Gallons/Day

STORMWATER AND WASTEWATER

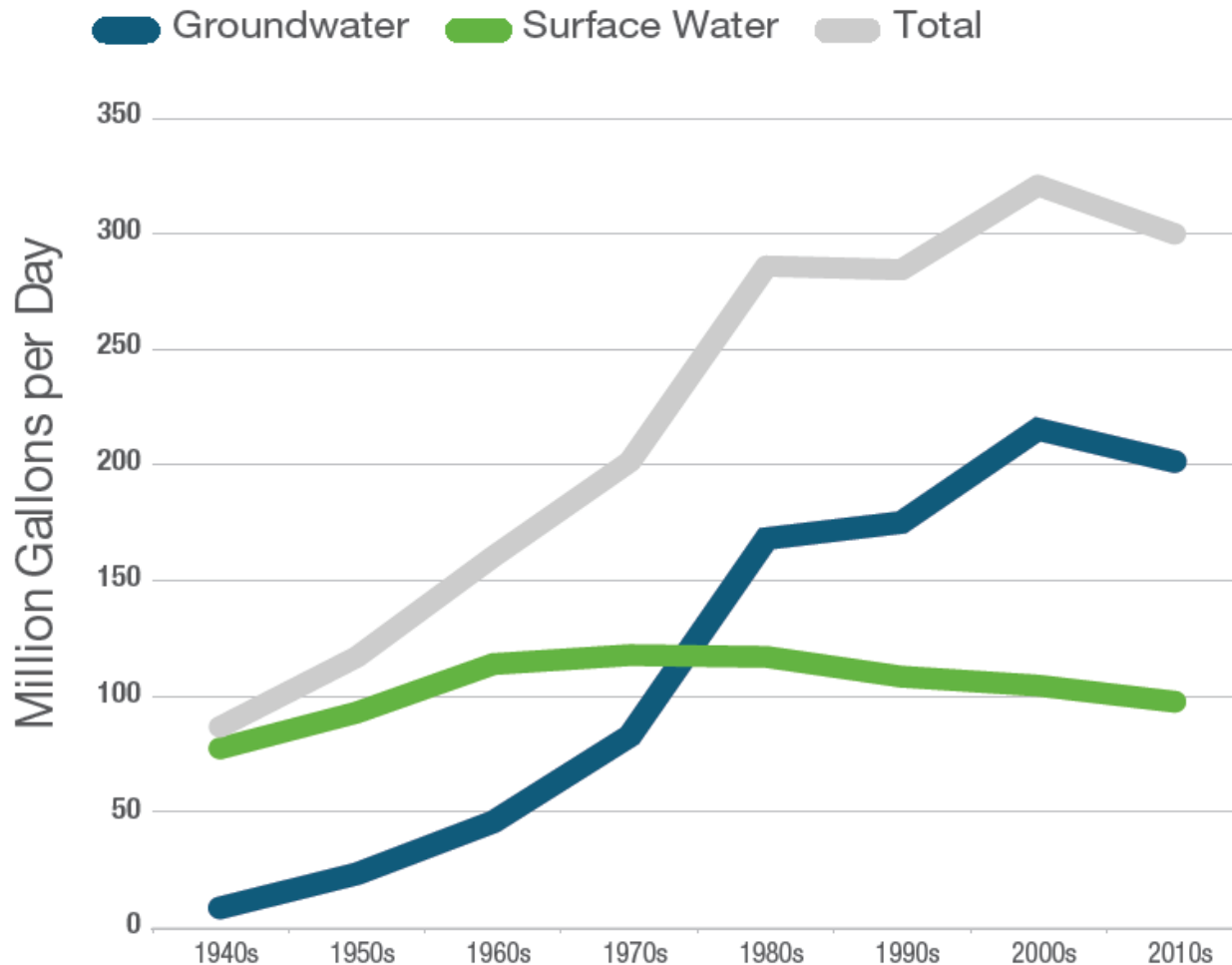
An average home
can collect over

600
GALLONS
OF WATER

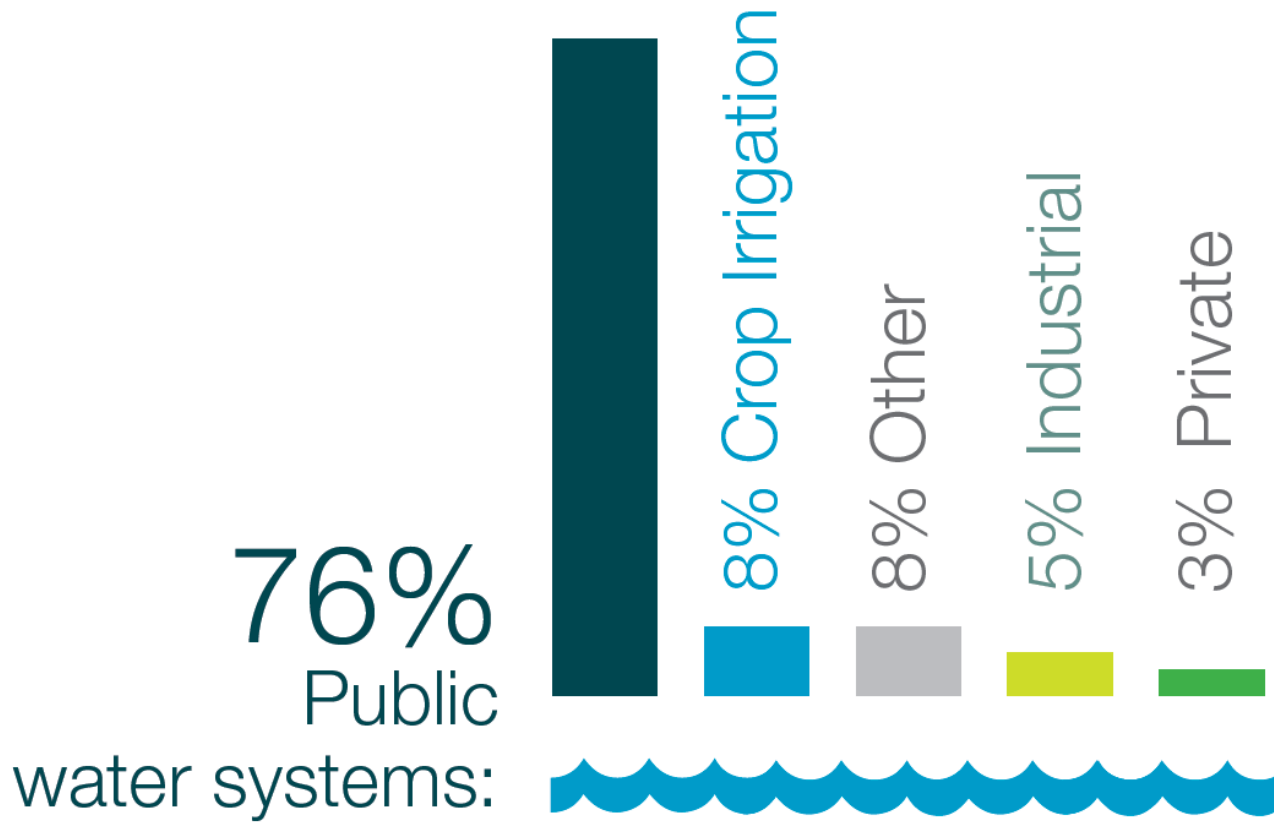
during
moderate rain



NOW, WE USE MORE GROUNDWATER COMPARED TO SURFACE WATER



AVERAGE WATER USE



THE REGION FACES LIMITS AND INCREASED RISKS

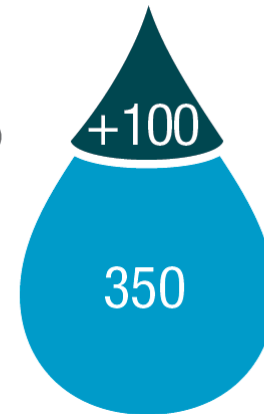


Growing population
increases water use

30%
Population ↑

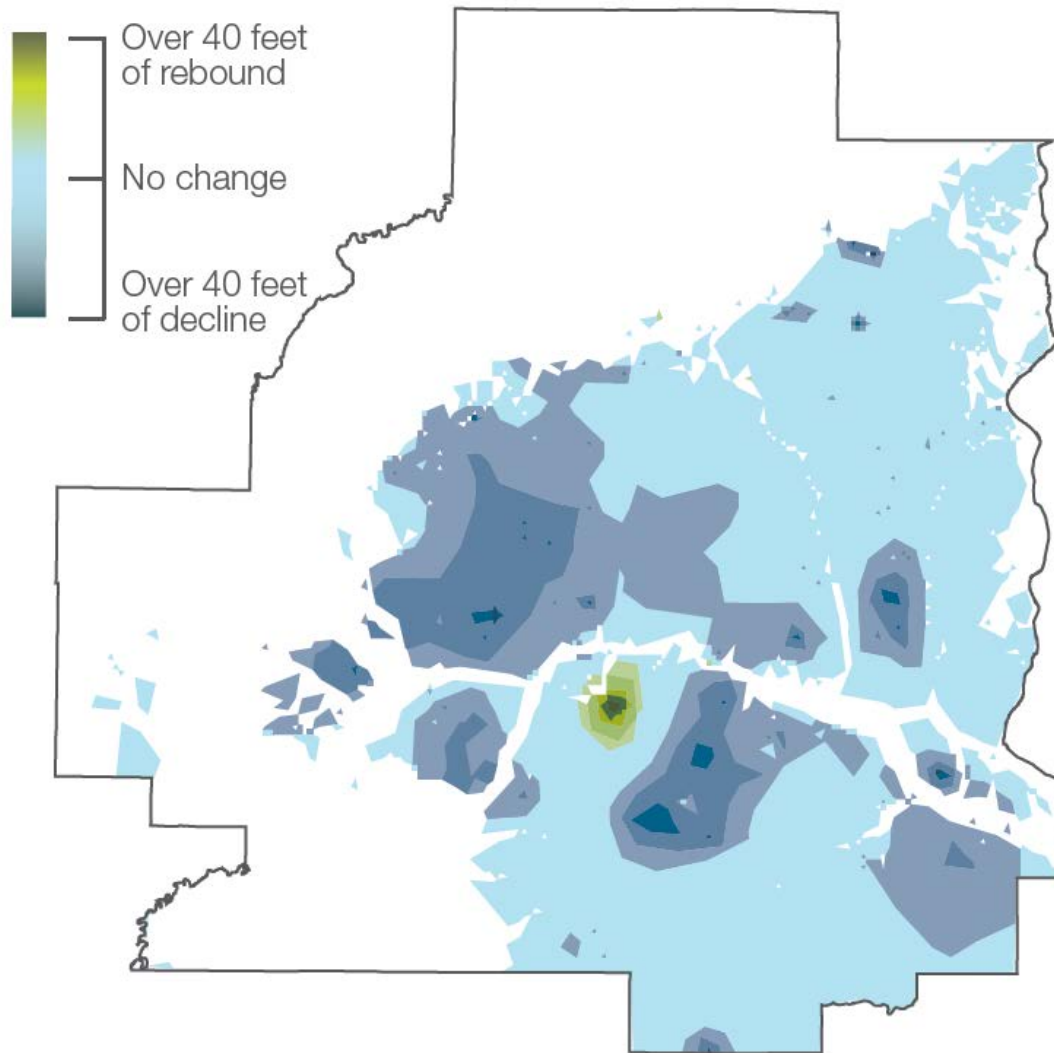
2040
More Use: ○

2015
Water Use: ○



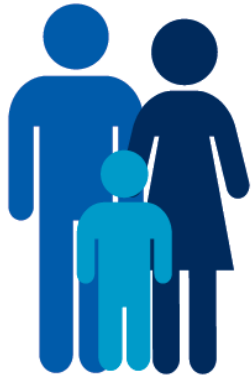
Million Gallons
per Day

CHANGE IN PRAIRIE DU CHIEN-JORDAN AQUIFER LEVELS FROM 2040 PUMPING



REGIONAL GOAL

 **90** gallons



per person
per day

CITY OF WOODBURY

CONSERVATION IS OUR WAY TO THE FUTURE



23% In the region

Of residential water use is used outside for irrigation

“Woodbury is committed to serving as a regional leader in managing the water supply.

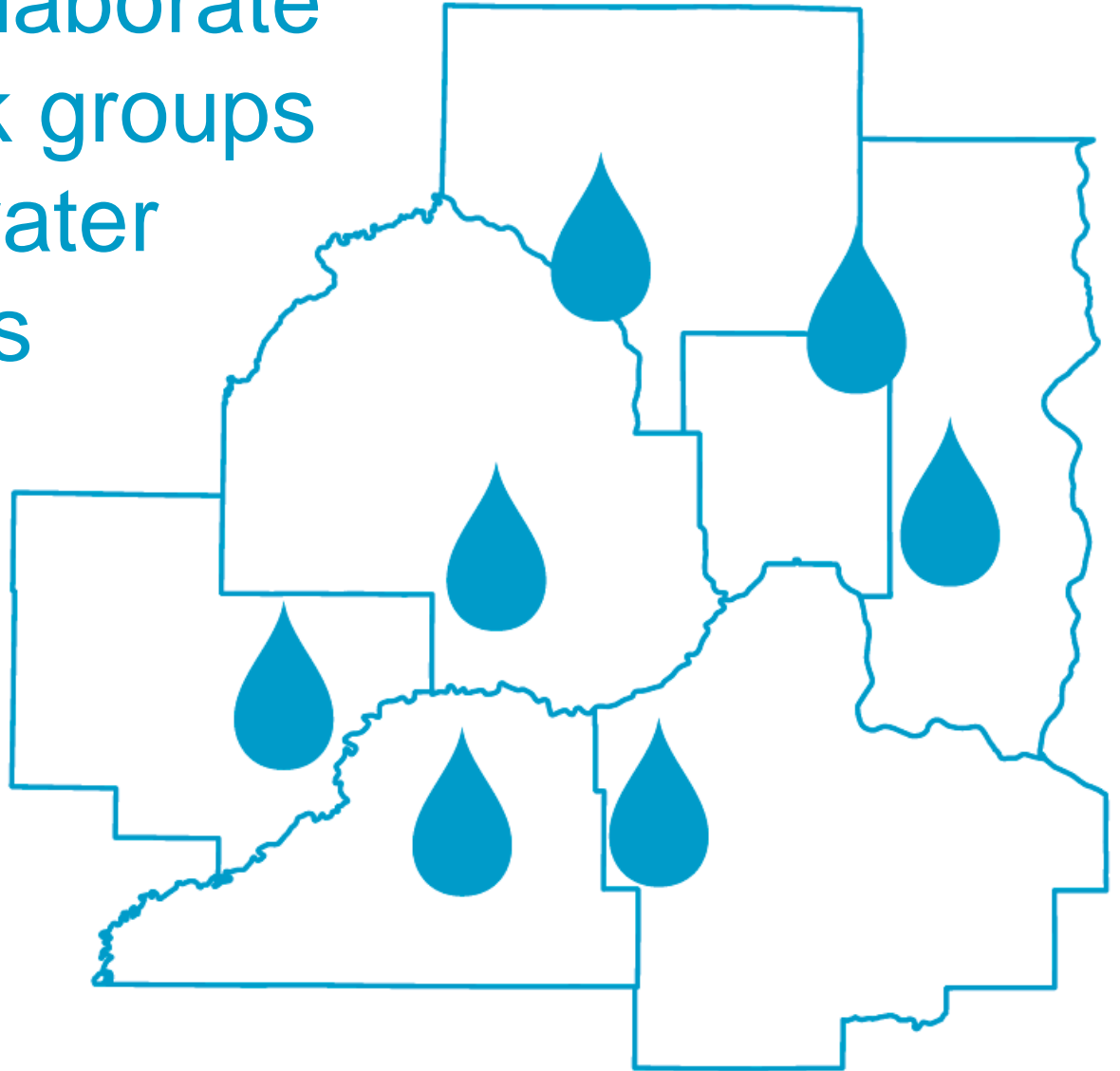
We must be responsible stewards of our water. Effective conservation efforts will be an imperative part of our future success.”

Jim Westerman, Woodbury Utilities Supervisor and Environmental Resource Coordinator

CITIES OF BURNSVILLE & SAVAGE PARTNERSHIPS PRODUCE INNOVATION



Communities and agencies collaborate through work groups to address water supply issues





FUTURE WORK NEEDS SUPPORT



FUNDING




EFFICIENCY AND WISE USE OF WATER



WORKABLE SOLUTIONS



COLLABORATE FOR BETTER RESULTS



**BY SUPPORTING LOCAL
LEADERSHIP AND COLLABORATION,
OUR SHARED WATER SUPPLIES
WILL SUSTAIN US THROUGH THE
CHALLENGES AHEAD**

Questions