

Transportation Committee

For the Metropolitan Council meeting of August 22, 2018

Subject: Controlled Access Approval: US 169 at MN 41/CH 78 and CH 14, Scott County

Proposed Action

That the Metropolitan Council approve a request by Scott County and the Minnesota Department of Transportation (MnDOT) to convert a portion of US 169 to a freeway in Jackson and Louisville Townships (see Figures 1 and 2). The proposed project includes conversion of the existing intersection on US 169 at MN 41/County Highway (CH) 78 to a diverging diamond interchange (see Figure 3), frontage road construction, the closure of numerous direct access points along US 169 and a non-traditional interchange on US 169 at CH 14 (see Figure 4), subject to further review and approval by the Metropolitan Council if there are any significant changes in the design of the proposed project.

Summary of Committee Discussion/Questions

Motion by Elkins, seconded by Schreiber to approve the consent agenda.

Transportation Committee

Meeting date: August 13, 2018

For the Metropolitan Council meeting of August 22, 2018

Subject: Controlled Access Approval: US 169 at MN 41/CH 78 and CH 14, Scott County

District(s), Member(s): District 4, Deb Barber

Policy/Legal Reference: Mn. Statute 473.166

Staff Prepared/Presented: Nick Thompson, Director, MTS, 651-602-1754

Amy Vennewitz, Deputy Director, Finance and Planning, MTS, 651-602-1508

Steve Peterson, Manager of Highway Planning and TAB/TAC Process, 651-602-1819

Tony Fischer, Planning Analyst, MTS, 651-602-1703

Division/Department: Metropolitan Transportation Services (Review #22033-1)

Proposed Action

That the Metropolitan Council approve a request by Scott County and the Minnesota Department of Transportation (MnDOT) to convert a portion of US 169 to a freeway in Jackson and Louisville Townships (see Figures 1 and 2). The proposed project includes conversion of the existing intersection on US 169 at MN 41/County Highway (CH) 78 to a diverging diamond interchange (see Figure 3), frontage road construction, the closure of numerous direct access points along US 169 and a non-traditional interchange on US 169 at CH 14 (see Figure 4), subject to further review and approval by the Metropolitan Council if there are any significant changes in the design of the proposed project.

Background

Minnesota state law (MS. 473.166) requires that the Council approve any controlled access highway in the metropolitan area before construction or right-of-way acquisition begins. This is to ensure that proposed highway projects are consistent with regional policies and plans.

This project will construct an interchange at US 169, MN 41, and CH 78; an overpass and acceleration lanes (i.e. a non-traditional interchange) at CH 14; and township frontage roads converting US 169 from CH 69 south 1.5 miles to a freeway. US 169 will continue southerly as a limited access expressway to the project termini .5 miles south of CH 14 eliminating 20 access points to US 169. Scott County is the lead agency in partnership with the Minnesota Department of Transportation and in consultation with Jackson and Louisville Townships. The construction project will also include storm water facilities and retention ponds to serve the new highway facilities, replacement of two box culverts over Picha Creek on US 169 and a segment of the regional trail on the CH 14 alignment, which will connect to the planned regional trail on the abandoned UP rail corridor owned by Scott County.

Today the first signalized intersection on US 169 traveling south in Scott County is at MN 41/CH 78. This project will improve US 169 so that the first signalized intersection is eight miles further south in the City of Jordan. This project will also support an important crossing of MN 41 (classified as a Principal Arterial) across the Minnesota River and an important east-west highway in Scott County (Scott County Highway 14 is classified as an A-minor connector).

This project is part of Scott County's, MnDOT's and the region's ongoing efforts to improve the safety and mobility of regional highways to support economic development and quality of life.

Rationale and Consistency with Regional Policy

This project is included in Scott County's approved 2018-2022 Capital Improvement Program and in the regions 2018-2021 Transportation Improvement Program. It is consistent with regional policy as it most directly advances the Transportation Policy Plan's goals of Safety and Security, Access to Destinations and Competitive Economy. It most specifically supports the Thrive MSP 2040 outcomes of Prosperity and Livability.

The Minnesota state environmental review process concluded with a Negative Declaration regarding the need for an Environmental Impact Statement on June 9, 2017.

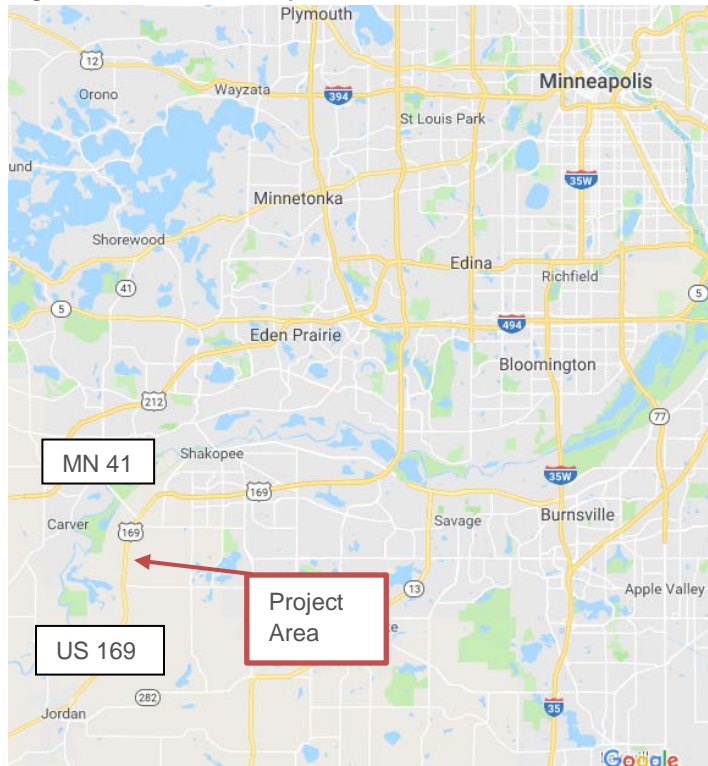
Funding

Scott County was awarded \$7.5 million for an interchange at US 169 at MN 41/CH 78 in the 2014 Regional Solicitation and \$4.7 million for CH 14 in the 2016 Regional Solicitation. MnDOT awarded the project \$10 million through its Transportation Economic Development (TED) program and is contributing \$2 million of State Road Construction and \$1.5 million in federal dollars to the project. Scott County was also awarded a \$17.7 million Federal Transportation Investment Generating Economic Recovery (TIGER) grant award and will fund the project in part with its Transportation Sales Tax.

Known Support / Opposition

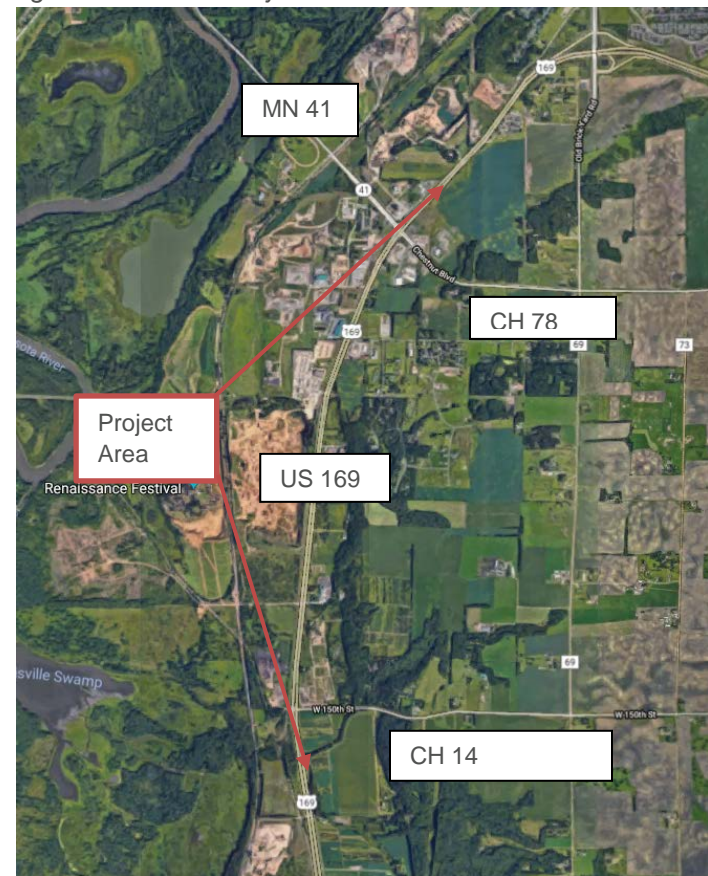
There is no known opposition to this project. It has been supported financially by a wide array of transportation partners noted above.

Figure 1: Context of Project Area



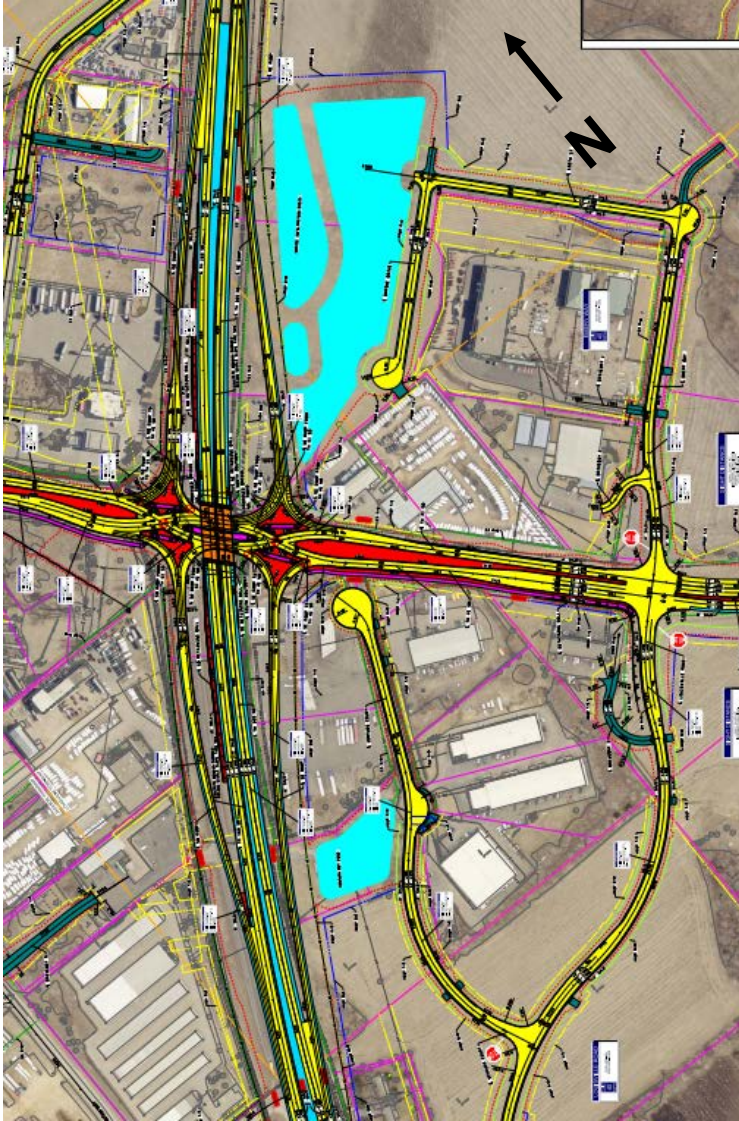
Source: Google Maps

Figure 2: Detailed Project Area



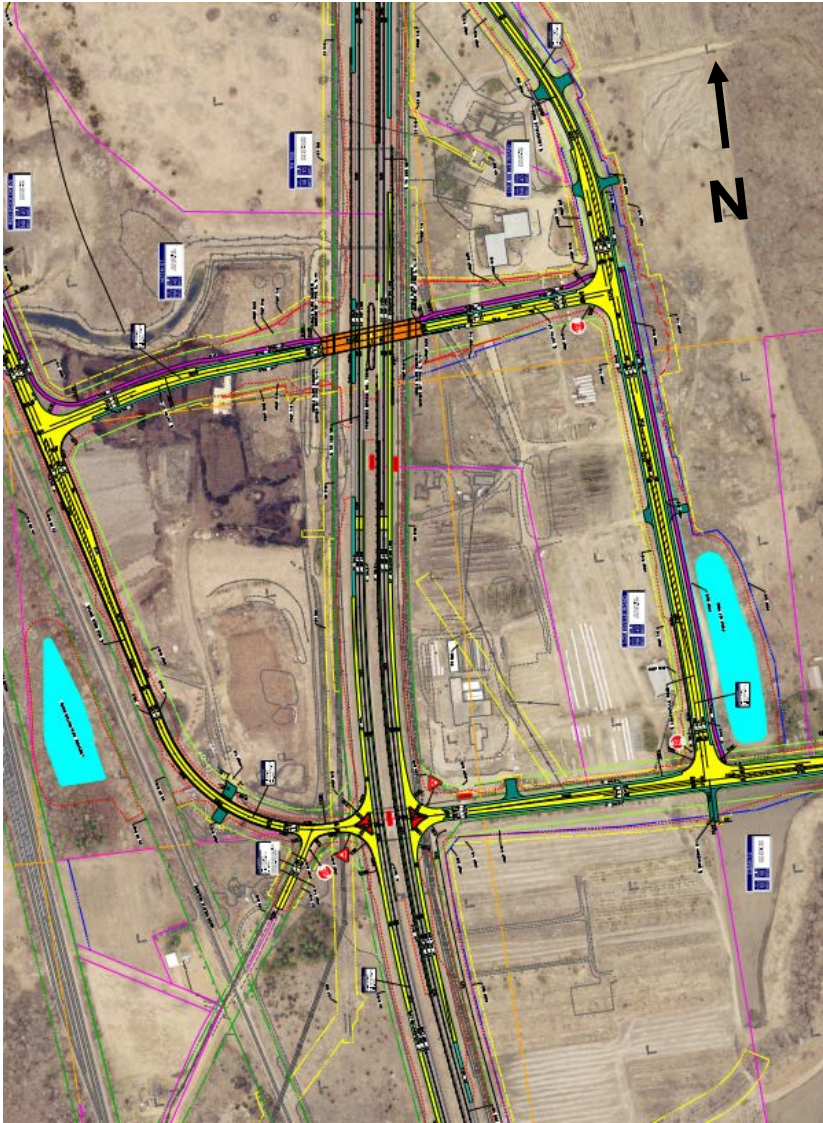
Source: Google Maps

Figure 3: Project Improvements at US 169 at MN 41/County Highway 78



Source: Scott County

Figure 4: Project Improvements at US 169 at County Highway 14



Source: Scott County