

# Information Item:

# MCES – Minneapolis CSO Permit Termination

Jeannine Clancy, Assistant General Manager, Technical Services  
Katrina Kessler, Director of Surface Water and Sewers, City of  
Minneapolis

Metropolitan Council: August 22, 2018



# Presentation Outline



Overview of Permit Termination

---



Background

---



Key Milestones and Success Indicators

---



Next Steps

# Termination of NPDES/SDS Permit



Joint NPDES/SDS Permit first issued in 1984 (it was reissued in 1986, 1991, and 1997).

---



MCES and Minneapolis have defined their responsibilities regarding connected infrastructure

---



City and Minneapolis Park Board hold joint “integrated” MS4 permit

---



MCES applies for Joint Permit Termination, Minneapolis concurs with application

---



MPCA terminates joint CSO Permit

# Clean Water Act Permits



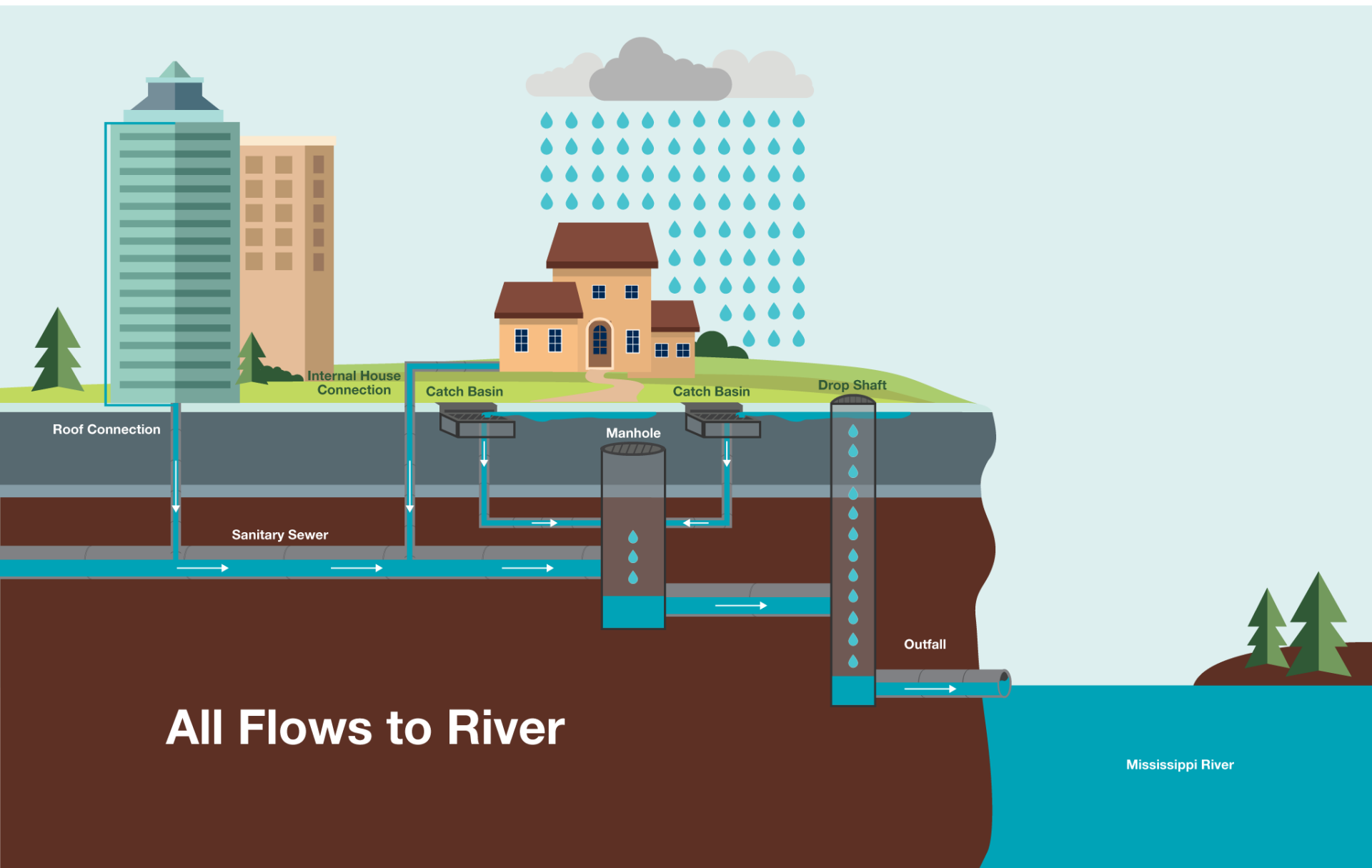
Minnesota Pollution Control Agency



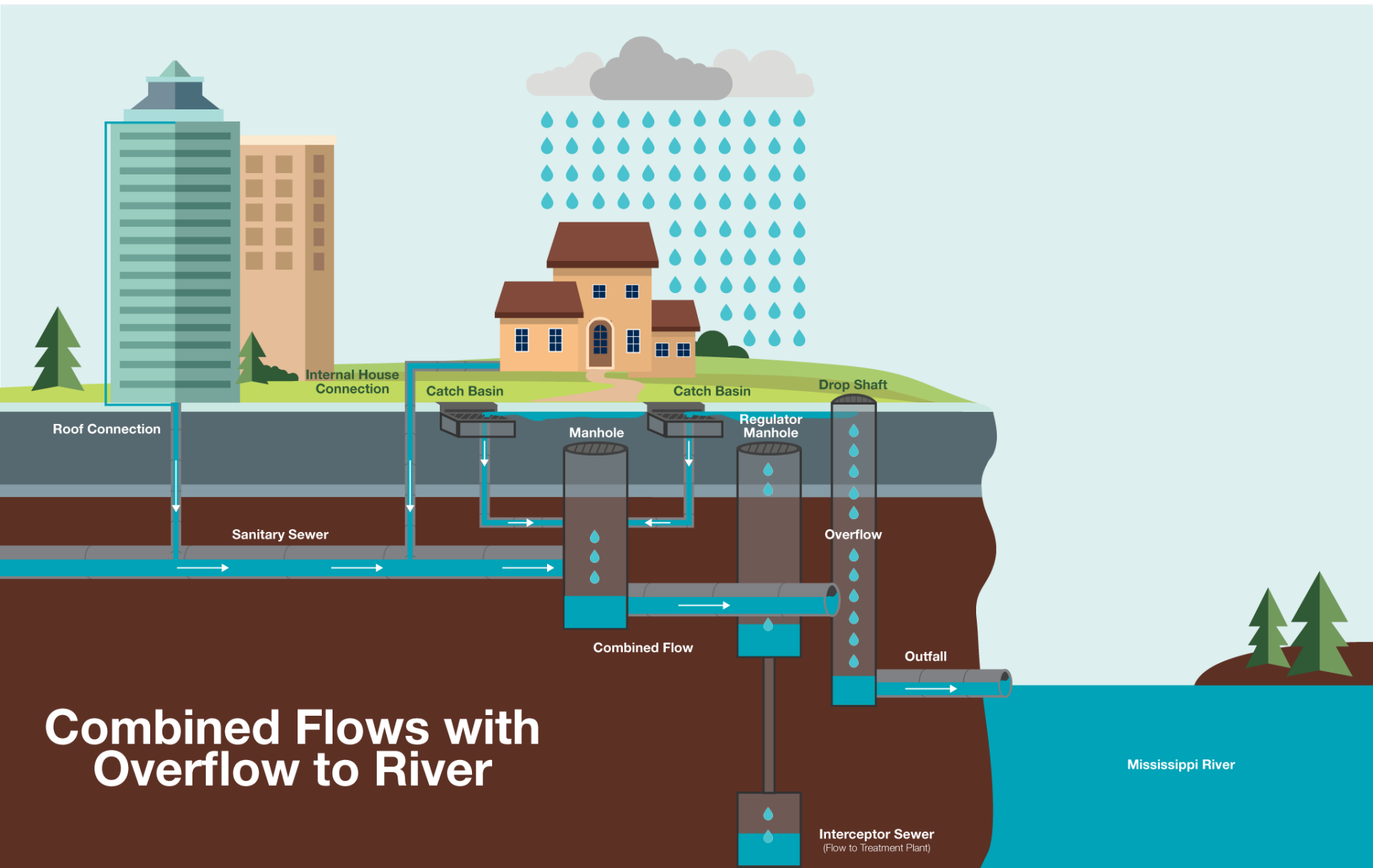
1969 Cuyahoga  
River fire  
CLEVELAND, OHIO

- 1972 Federal Clean Water Act
- National Pollution Discharge Elimination System (NPDES)
- Regulates municipal and industrial wastewater and storm water
- Historically the City had two permits
  - Combined Sewer Overflow (CSO) permit
  - Municipal Separate Storm Sewer System (MS4) permit

# Pre-1938: Our Wastewater System

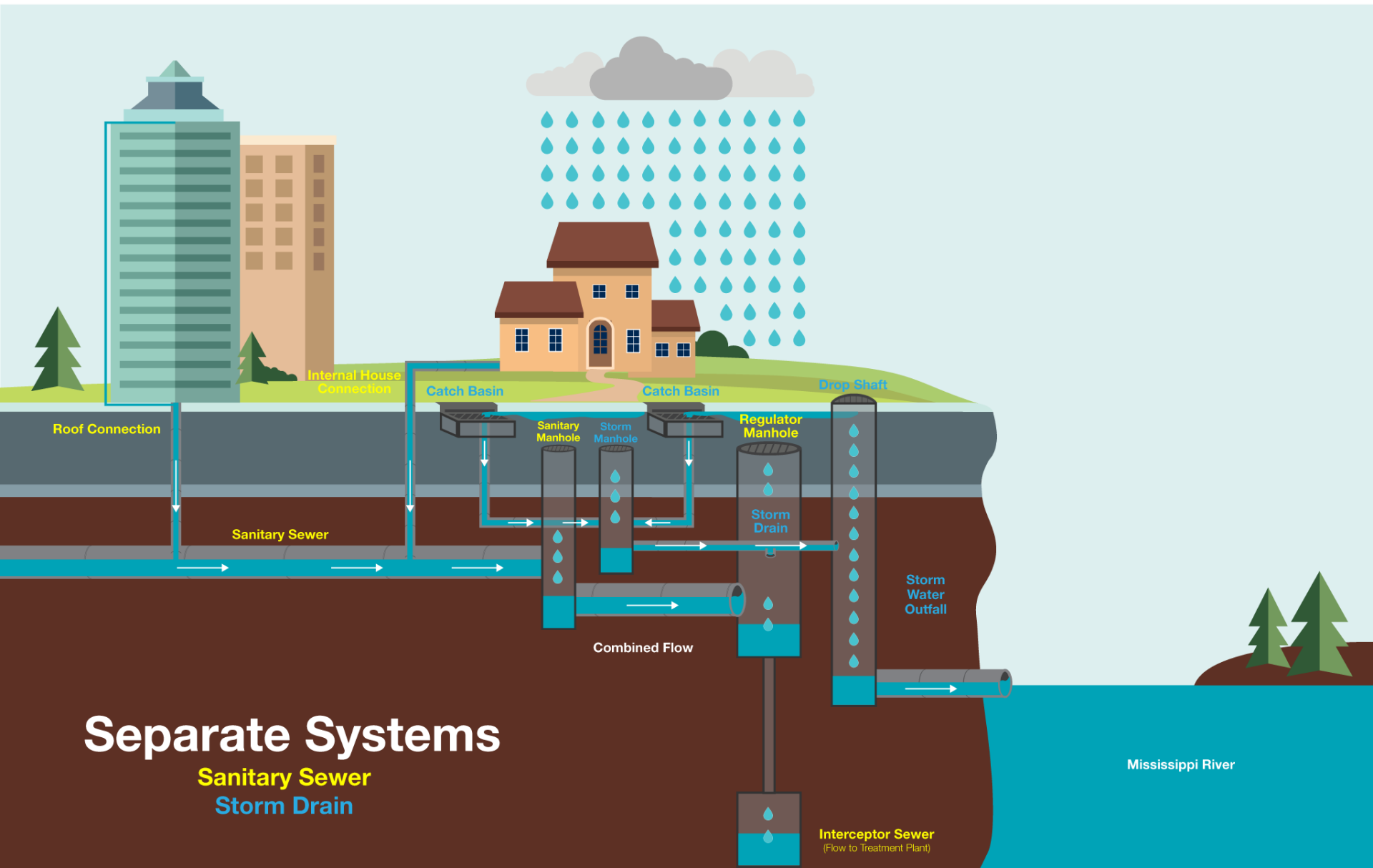


# 1938-1995: Our Wastewater System

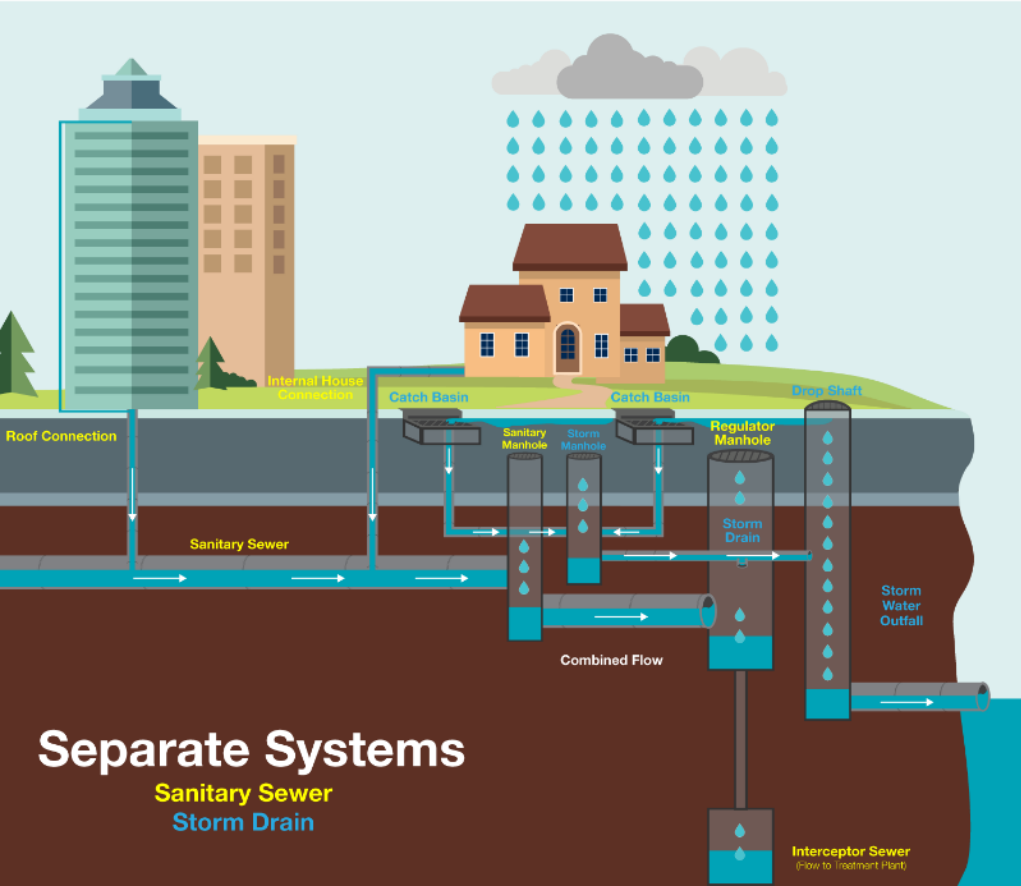


**Combined Flows with  
Overflow to River**

# After 1995: Our Wastewater System



# Sewer Separation

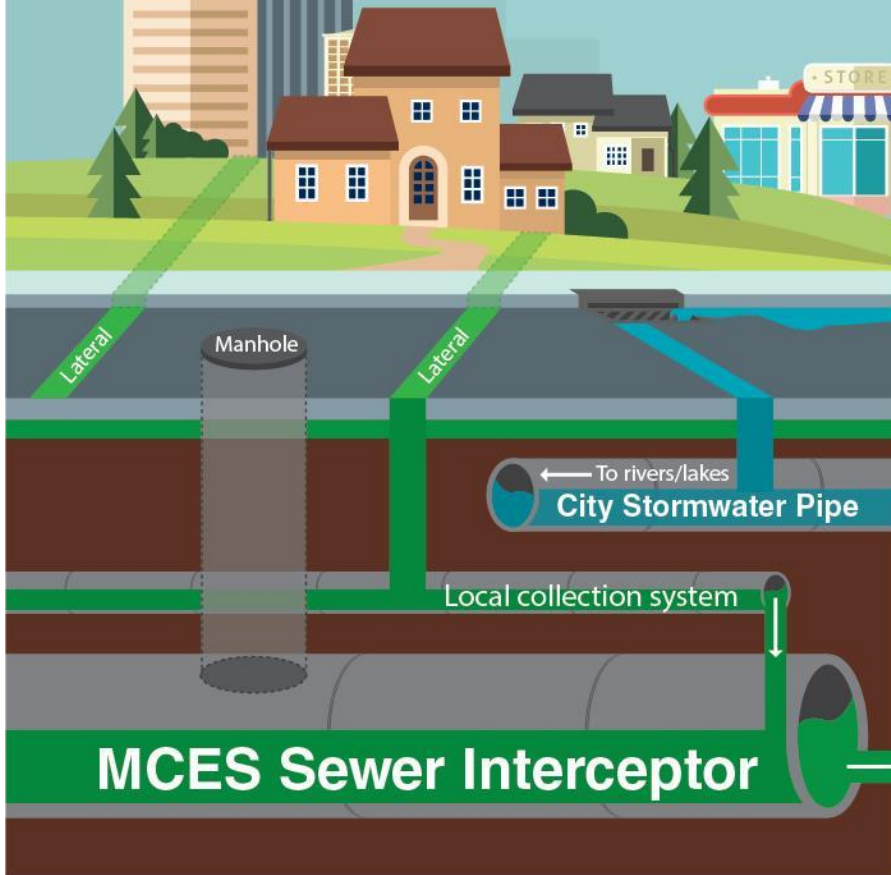




# Wastewater System



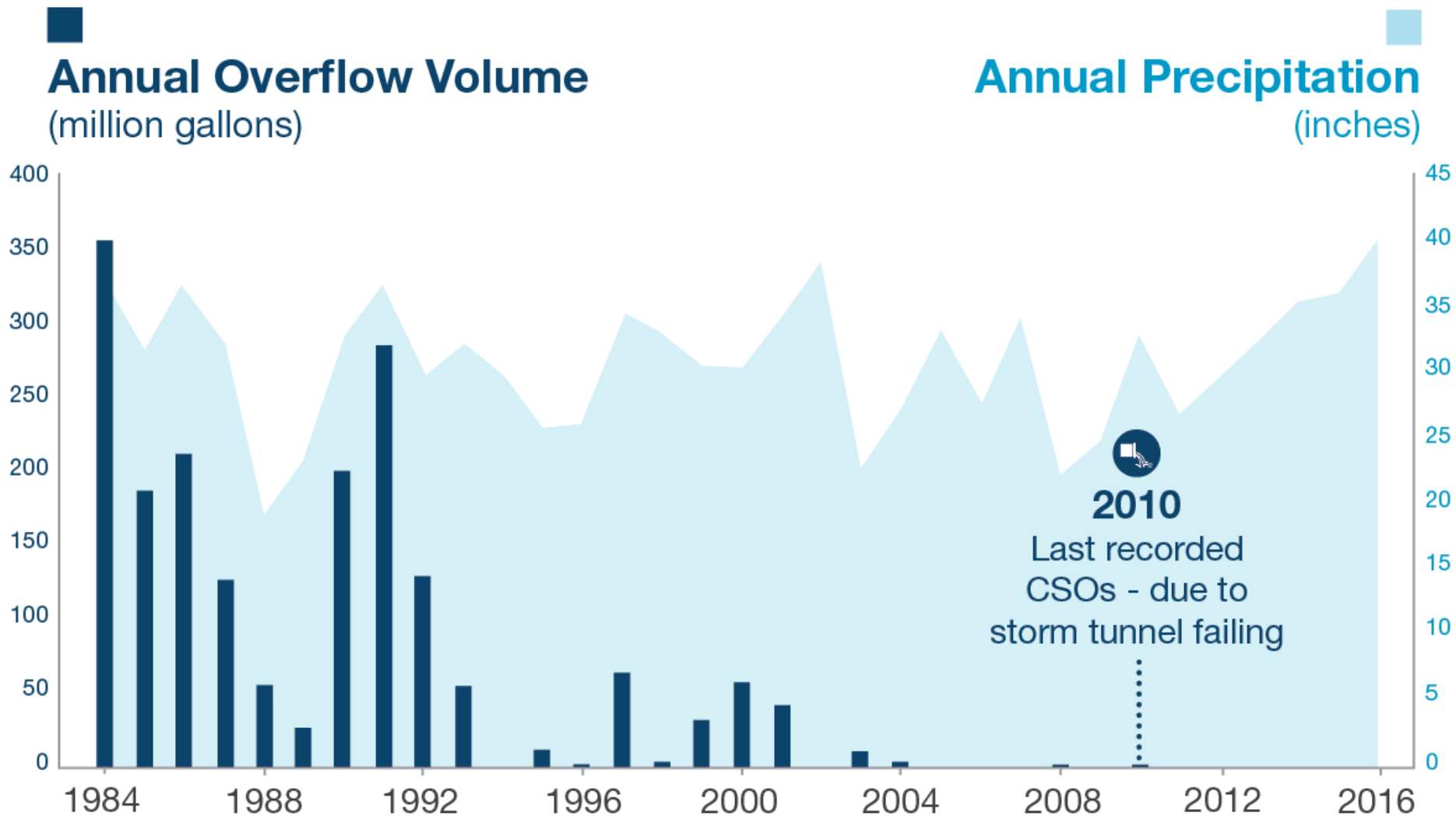
We treat wastewater from bathing, laundry, toilets, kitchens, commercial and industrial uses.



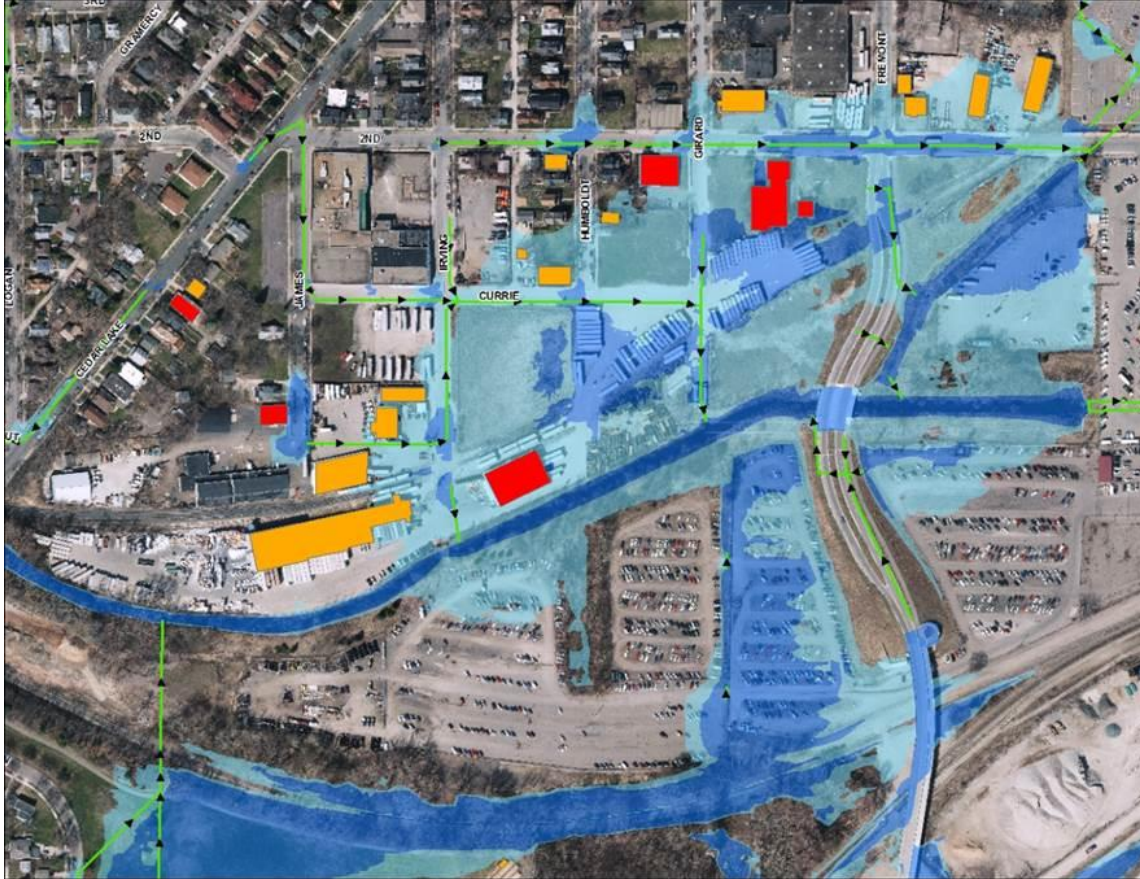
Our treatment process removes pollutants by converting them to small volume of organic solids, and returns clean water to the environment.



# Minimizing Risk of CSO

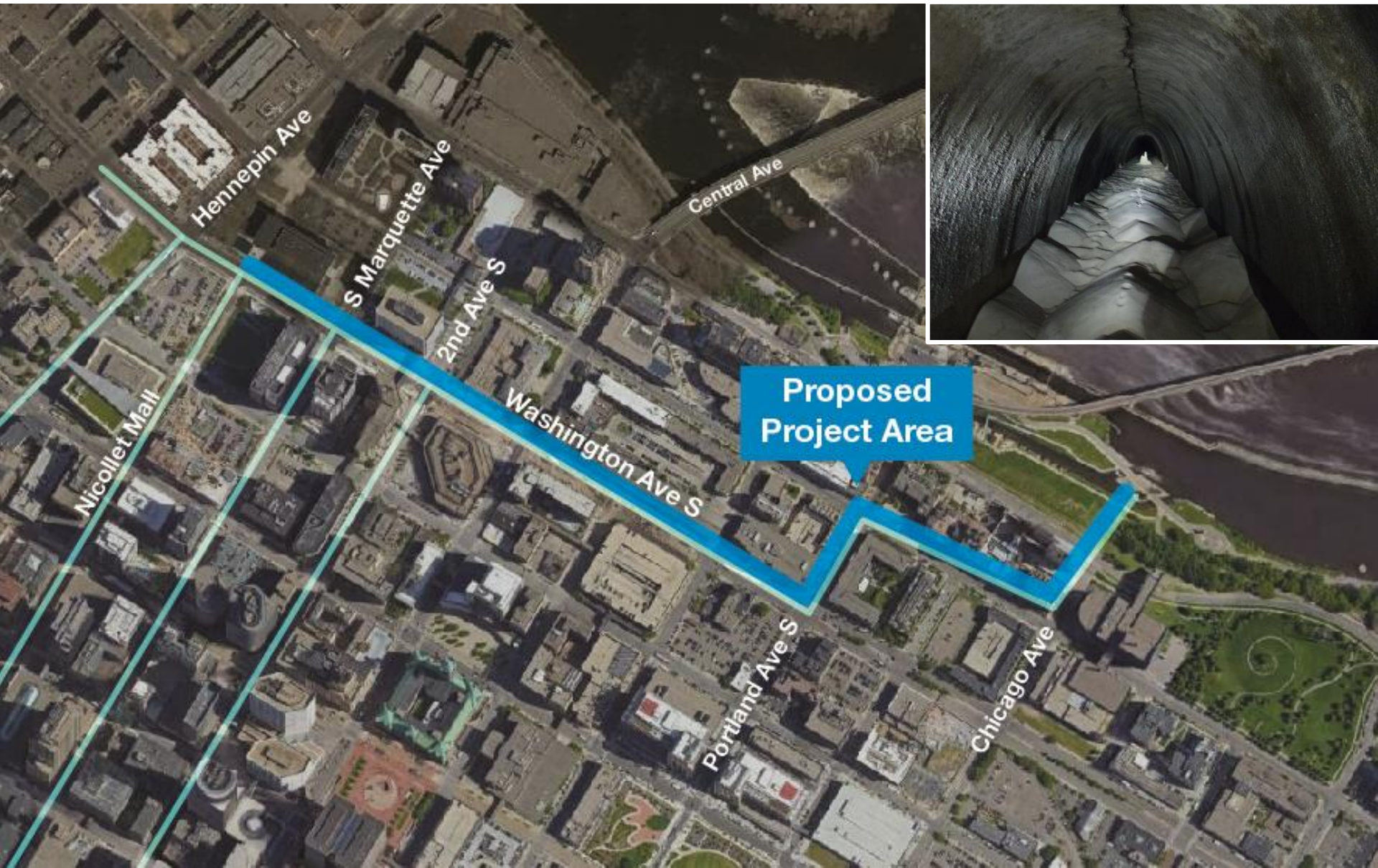


# Examples of Integrated Work



- Light rail planning
- Development and redevelopment
- Layering results of hydraulic and water quality models with condition data to identify flood mitigation and water quality pilot projects
- Stormwater tunnels

# Central City Storm Tunnel





150 areas  
of localized  
flooding  
problems  
identified



# Flooding, Water Quality, and Resiliency

# Regional Policies and Programs

I/I Program (I/I task force begins in 2003, policy adopted in 2005)

---

Council will not build capacity for excessive I/I

---

Communities will have a private property I/I mitigation program in 2018 comprehensive plan

---

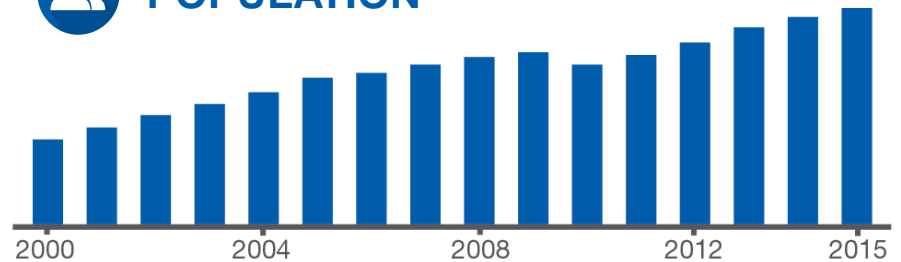
MCES Capital Program

# Inflow/ Infiltration Progress

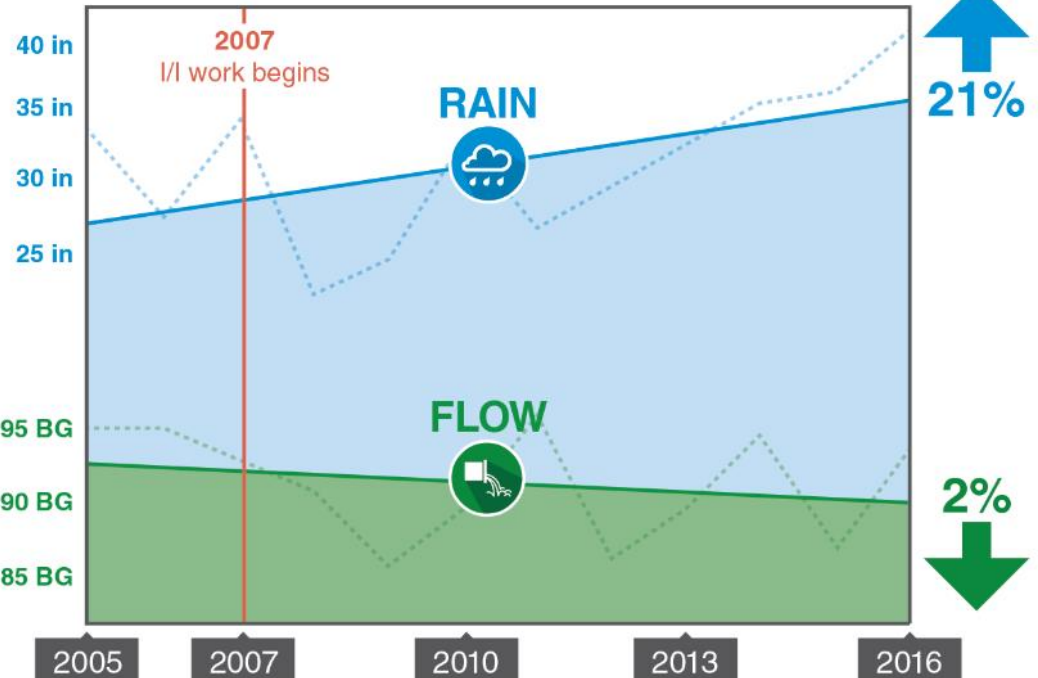
Regional population has grown



POPULATION



Average annual precipitation has increased



Annual flow has decreased

# Educational Tools

[About Us](#) | [News & Events](#) | [Data & Maps](#) | [Publications & Documents](#) | [Doing Business](#) | [Council Meetings](#) | [Contact Us](#) | [Employment](#)



COMMUNITIES

PARKS

TRANSPORTATION

WASTEWATER & WATER

HOUSING

PLANNING

## WASTEWATER

[Inflow and Infiltration](#)

[Local Government](#)

[Property Owners](#)

[News & Events](#)

[Funding & Finance](#)

[Publications & Documents](#)

[Contact Staff](#)

[Council Fact Sheets](#)

## TOOLS FOR PROPERTY OWNERS



Don't let clear water into the wastewater system. It costs you in many ways:

- Causes sewer backups into homes
- Causes sewer overflows into rivers and lakes
- Increases sewers and utility fees
- Increases the need for larger and more expensive sewer pipes and treatment facilities



Home Sewer Repair



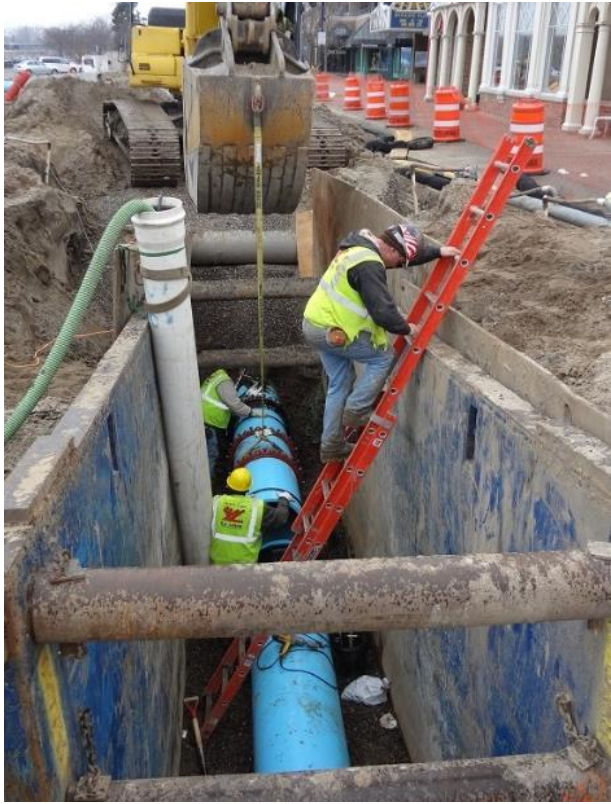
Home Sewer Inspection



Inflow and Infiltration fr...



# Capital Improvements in the Region



# Minneapolis Integrated MS4 Permit

## Reissued Phase I MS4

February 16, 2018

Provides foundation for stormwater ordinance upgrades (e.g., volume reduction and trading)

Acknowledges historic connections, requires “Integrated Infrastructure Management Program”

- Reporting on investments to minimize risks to human health and the environment
- Allows City to identify and prioritize projects to minimize likelihood of overflows and improve water quality

# MCES/Minneapolis Joint Study



Will identify existing and future system limitations

---



Will develop a conceptual plan for asset renewal, reliability, I/I mitigation, and minimize risk of overflows, which meets the customer level of service and objectives of the cooperative agreement between MCES and Minneapolis.

# Next Steps to Ensure Compliance



Continued investment in regional wastewater assets

---



I/I Program tailored to address challenges in each community

---



Financial support for private property I/I mitigation and public infrastructure

---

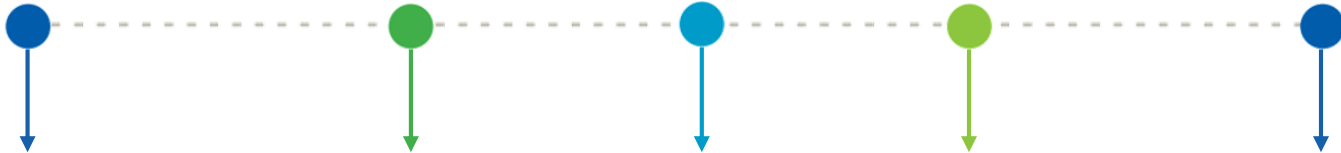


Joint studies with Minneapolis and St. Paul to understand system response to wet weather, and optimize investments

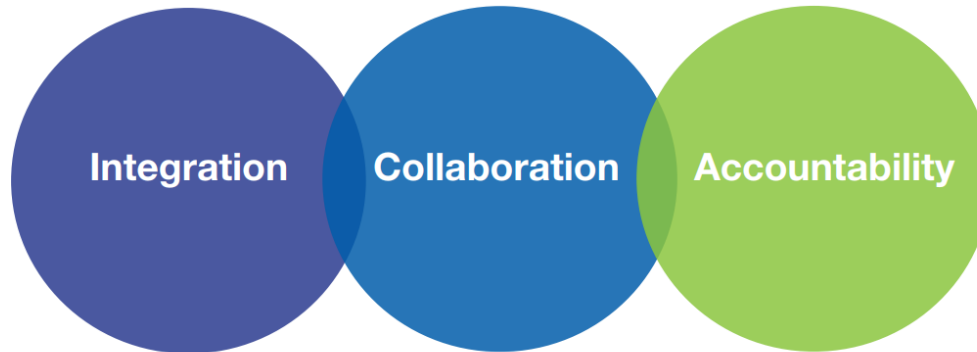
# Thrive-Driven Outcomes & Principles

THRIVE-DRIVEN OUTCOMES THAT DEFINE OUR SHARED REGIONAL VISION:

Stewardship Prosperity Equity Livability Sustainability



PRINCIPLES TO CARRY OUT THE COUNCIL'S WORK:





Questions